

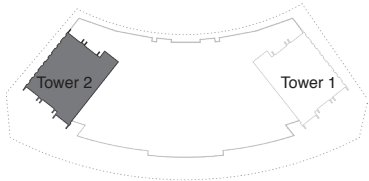
FLOOR PLANS

TOWER 2

HARBOUR GATE

DUBAI CREEK HARBOUR

HARBOUR GATE



3 BEDROOM WITH BALCONY

TOWER 2
UNIT 1 | LEVELS 2-14, 16-28

Suite Area 1448.18 Sq.ft. / 134.54 Sq.m.
Balcony Area 200.21 Sq.ft. / 18.60 Sq.m.
Total Area 1648.39 Sq.ft. / 153.14 Sq.m.

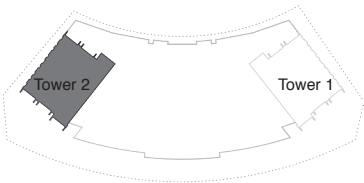
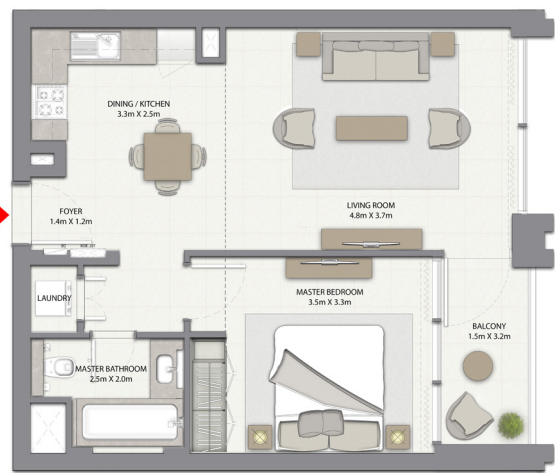


1. All dimensions are in imperial and metric, and measured to structural elements and exclude wall finishes and construction tolerances. 2. All materials, dimensions, and drawings are approximate only. 3. Information is subject to change without notice, at developer's absolute discretion. 4. Actual area may vary from the stated area. 5. Drawings not to scale. 6. All images used are for illustrative purposes only and do not represent the actual size, features, specifications, fittings, and furnishings. 7. The developer reserves the right to make revisions/ alterations, at its absolute discretion, without any liability whatsoever. *Please note that landscaping and swimming pool are not provided by the developer.

DUBAI CREEK

HARBOUR

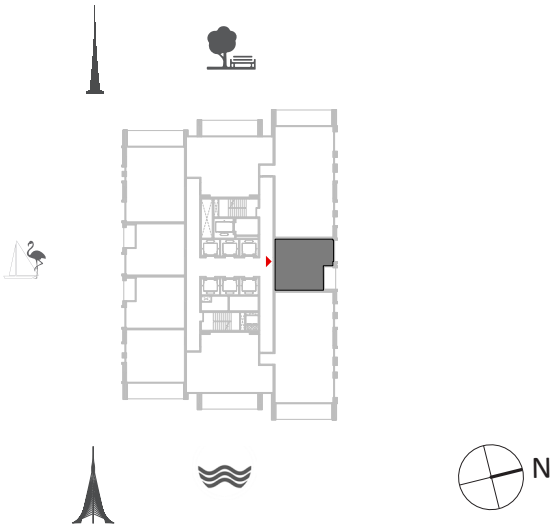
HARBOUR GATE



1 BEDROOM WITH BALCONY

TOWER 2
UNIT 2 | LEVELS 2-14, LEVELS 16-28

Suite Area 618.39 Sq.ft. / 57.45 Sq.m.
Balcony Area 59.74 Sq.ft. / 5.55 Sq.m.
Total Area 678.13 Sq.ft. / 63.00 Sq.m.

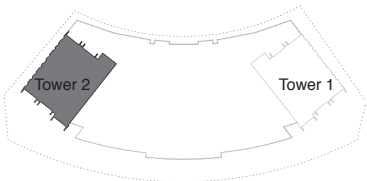


1. All dimensions are in imperial and metric, and measured to structural elements and exclude wall finishes and construction tolerances. 2. All materials, dimensions, and drawings are approximate only. 3. Information is subject to change without notice, at developer's absolute discretion. 4. Actual area may vary from the stated area. 5. Drawings not to scale. 6. All images used are for illustrative purposes only and do not represent the actual size, features, specifications, fittings, and furnishings. 7. The developer reserves the right to make revisions/ alterations, at its absolute discretion, without any liability whatsoever. *Please note that landscaping and swimming pool are not provided by the developer.

DUBAI CREEK

HARBOUR

HARBOUR GATE



3 BEDROOM WITH BALCONY

TOWER 2
UNIT 3 | LEVELS 1-14, LEVELS 16-28

Suite Area 1448.18 Sq.ft. / 134.54 Sq.m.
Balcony Area 200.21 Sq.ft. / 18.60 Sq.m.
Total Area 1648.39 Sq.ft. / 153.14 Sq.m.

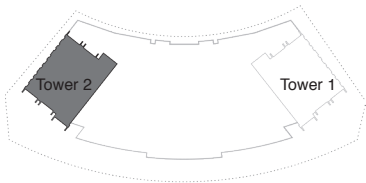


1. All dimensions are in imperial and metric, and measured to structural elements and exclude wall finishes and construction tolerances. 2. All materials, dimensions, and drawings are approximate only. 3. Information is subject to change without notice, at developer's absolute discretion. 4. Actual area may vary from the stated area. 5. Drawings not to scale. 6. All images used are for illustrative purposes only and do not represent the actual size, features, specifications, fittings, and furnishings. 7. The developer reserves the right to make revisions/ alterations, at its absolute discretion, without any liability whatsoever. *Please note that landscaping and swimming pool are not provided by the developer.

DUBAI CREEK

HARBOUR

HARBOUR GATE



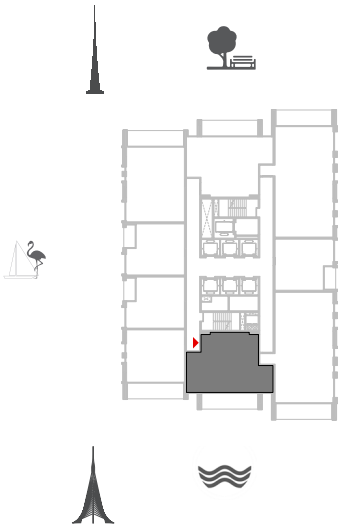
2 BEDROOM WITH BALCONY

TOWER 2
UNIT 4 | LEVELS 1-14, LEVELS 16-23

Suite Area 962.51 Sq.ft. / 89.42 Sq.m.

Balcony Area 200.21 Sq.ft. / 18.60 Sq.m.

Total Area 1162.72 Sq.ft. / 108.02 Sq.m.

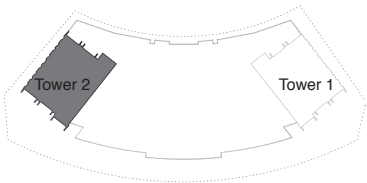


1. All dimensions are in imperial and metric, and measured to structural elements and exclude wall finishes and construction tolerances. 2. All materials, dimensions, and drawings are approximate only. 3. Information is subject to change without notice, at developer's absolute discretion. 4. Actual area may vary from the stated area. 5. Drawings not to scale. 6. All images used are for illustrative purposes only and do not represent the actual size, features, specifications, fittings, and furnishings. 7. The developer reserves the right to make revisions/ alterations, at its absolute discretion, without any liability whatsoever. *Please note that landscaping and swimming pool are not provided by the developer.

DUBAI CREEK

HARBOUR

HARBOUR GATE



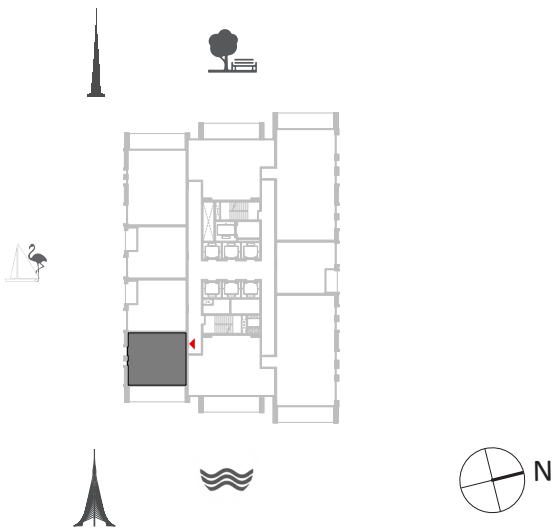
1 BEDROOM WITH BALCONY

TOWER 2
UNIT 5 | LEVELS 1-14

Suite Area 642.93 Sq.ft. / 59.73 Sq.m.

Balcony Area 203.65 Sq.ft. / 18.92 Sq.m.

Total Area 846.58 Sq.ft. / 78.65 Sq.m.

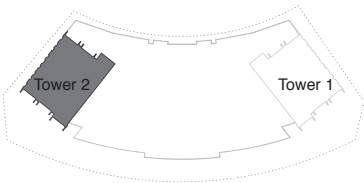
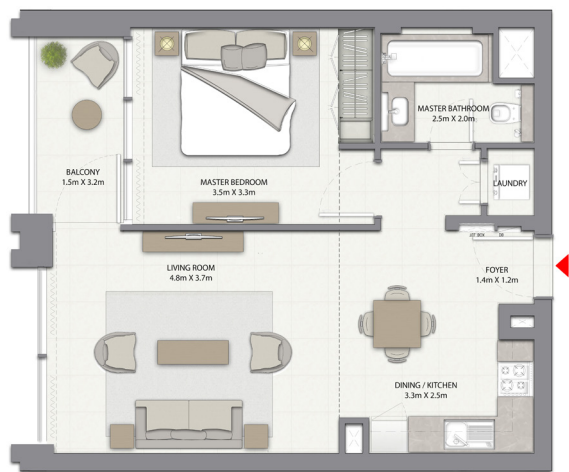


1. All dimensions are in imperial and metric, and measured to structural elements and exclude wall finishes and construction tolerances. 2. All materials, dimensions, and drawings are approximate only. 3. Information is subject to change without notice, at developer's absolute discretion. 4. Actual area may vary from the stated area. 5. Drawings not to scale. 6. All images used are for illustrative purposes only and do not represent the actual size, features, specifications, fittings, and furnishings. 7. The developer reserves the right to make revisions/ alterations, at its absolute discretion, without any liability whatsoever. *Please note that landscaping and swimming pool are not provided by the developer.

DUBAI CREEK

HARBOUR

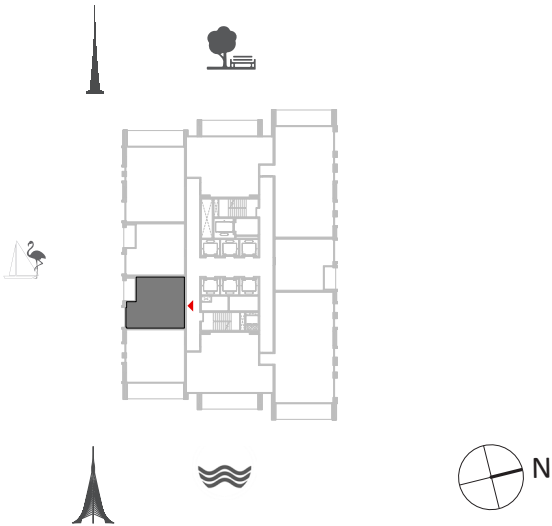
HARBOUR GATE



1 BEDROOM WITH BALCONY

TOWER 2
UNIT 6 | LEVELS 1-14

Suite Area 615.27 Sq.ft. / 57.16 Sq.m.
Balcony Area 60.17 Sq.ft. / 5.59 Sq.m.
Total Area 675.44 Sq.ft. / 62.75 Sq.m.

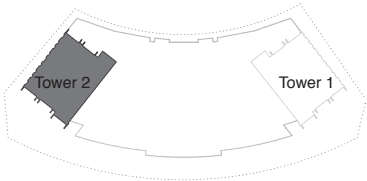
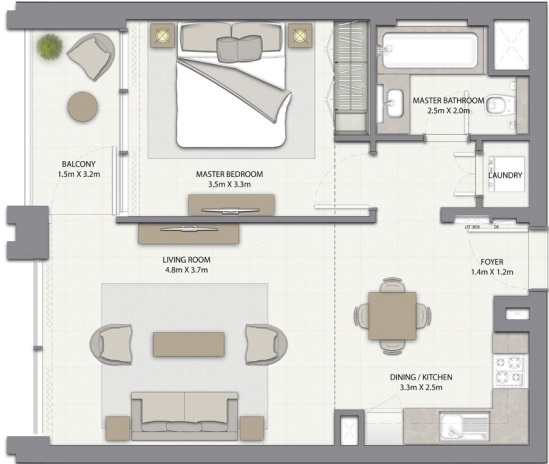


1. All dimensions are in imperial and metric, and measured to structural elements and exclude wall finishes and construction tolerances. 2. All materials, dimensions, and drawings are approximate only. 3. Information is subject to change without notice, at developer's absolute discretion. 4. Actual area may vary from the stated area. 5. Drawings not to scale. 6. All images used are for illustrative purposes only and do not represent the actual size, features, specifications, fittings, and furnishings. 7. The developer reserves the right to make revisions/ alterations, at its absolute discretion, without any liability whatsoever. *Please note that landscaping and swimming pool are not provided by the developer.

DUBAI CREEK

HARBOUR

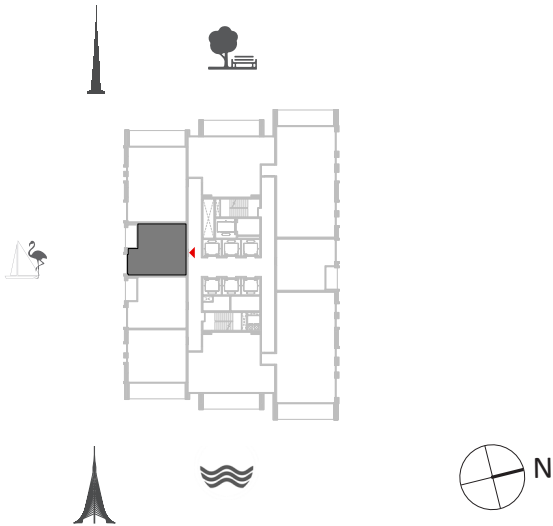
HARBOUR GATE



1 BEDROOM WITH BALCONY

TOWER 2
UNIT 7 | LEVELS 1-14

Suite Area 617.42 Sq.ft. / 57.36 Sq.m.
Balcony Area 60.17 Sq.ft. / 5.59 Sq.m.
Total Area 677.59 Sq.ft. / 62.95 Sq.m.

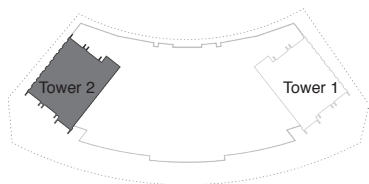
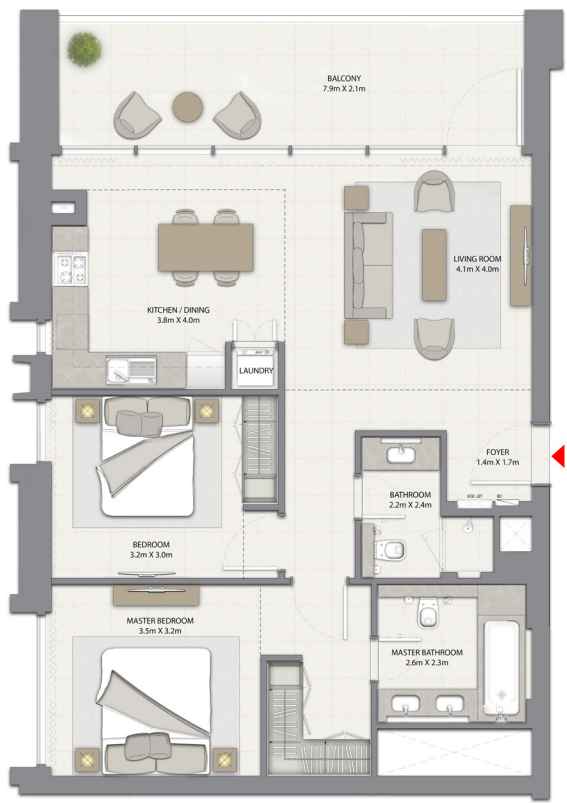


1. All dimensions are in imperial and metric, and measured to structural elements and exclude wall finishes and construction tolerances. 2. All materials, dimensions, and drawings are approximate only. 3. Information is subject to change without notice, at developer's absolute discretion. 4. Actual area may vary from the stated area. 5. Drawings not to scale. 6. All images used are for illustrative purposes only and do not represent the actual size, features, specifications, fittings, and furnishings. 7. The developer reserves the right to make revisions/ alterations, at its absolute discretion, without any liability whatsoever. *Please note that landscaping and swimming pool are not provided by the developer.

DUBAI CREEK

HARBOUR

HARBOUR GATE



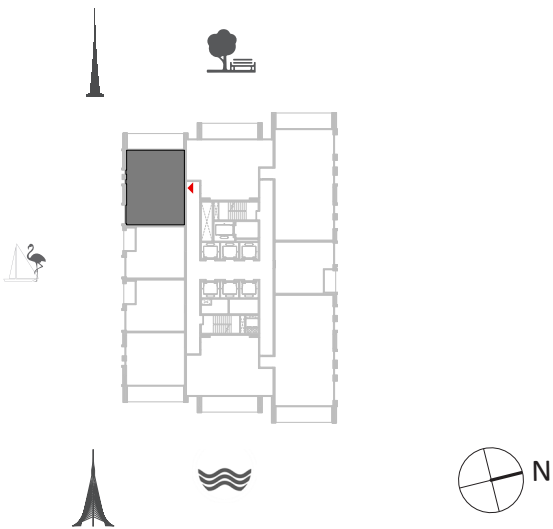
2 BEDROOM WITH BALCONY

TOWER 2
UNIT 8 | LEVELS 1-14, UNIT 7 | LEVELS 16-23

Suite Area 937.43 Sq.ft. / 87.09 Sq.m.

Balcony Area 203.65 Sq.ft. / 18.92 Sq.m.

Total Area 1141.08 Sq.ft. / 106.01 Sq.m.

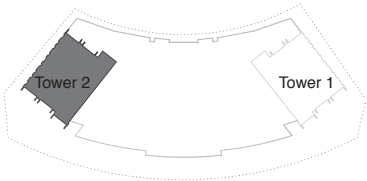


1. All dimensions are in imperial and metric, and measured to structural elements and exclude wall finishes and construction tolerances. 2. All materials, dimensions, and drawings are approximate only. 3. Information is subject to change without notice, at developer's absolute discretion. 4. Actual area may vary from the stated area. 5. Drawings not to scale. 6. All images used are for illustrative purposes only and do not represent the actual size, features, specifications, fittings, and furnishings. 7. The developer reserves the right to make revisions/ alterations, at its absolute discretion, without any liability whatsoever. *Please note that landscaping and swimming pool are not provided by the developer.

DUBAI CREEK

HARBOUR

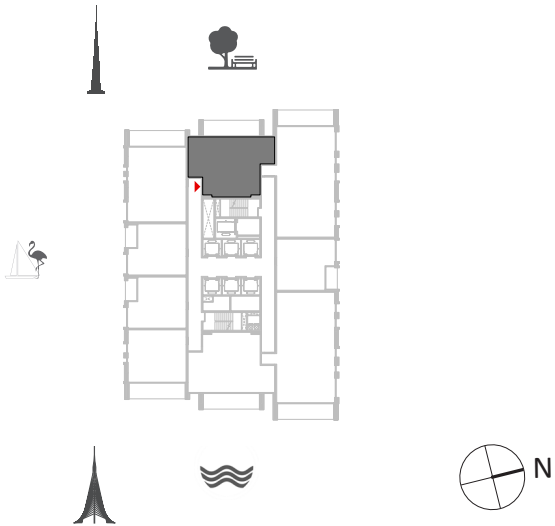
HARBOUR GATE



2 BEDROOM WITH BALCONY

TOWER 2
UNIT 9 | LEVELS 1-14, UNIT 8 | LEVELS 16-23

Suite Area 964.66 Sq.ft. / 89.62 Sq.m.
Balcony Area 200.21 Sq.ft. / 18.60 Sq.m.
Total Area 1164.87 Sq.ft. / 108.22 Sq.m.

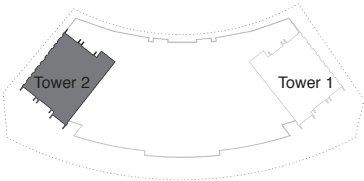
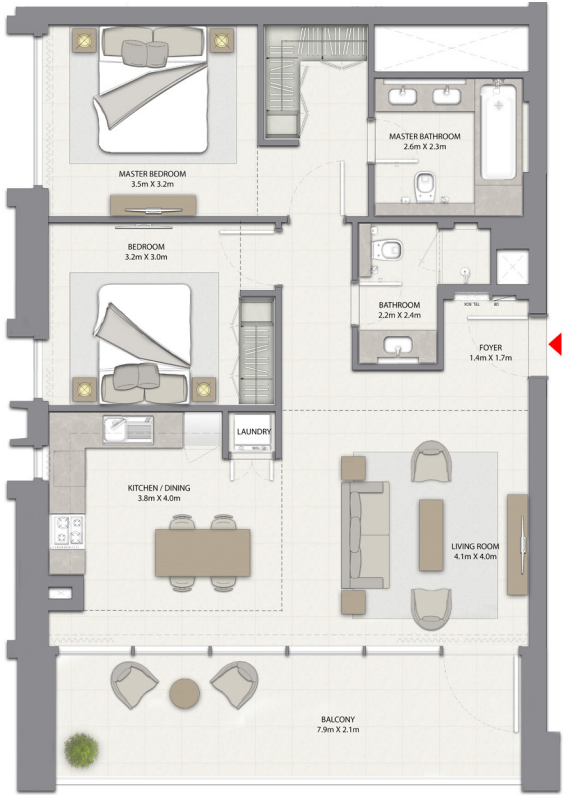


1. All dimensions are in imperial and metric, and measured to structural elements and exclude wall finishes and construction tolerances. 2. All materials, dimensions, and drawings are approximate only. 3. Information is subject to change without notice, at developer's absolute discretion. 4. Actual area may vary from the stated area. 5. Drawings not to scale. 6. All images used are for illustrative purposes only and do not represent the actual size, features, specifications, fittings, and furnishings. 7. The developer reserves the right to make revisions/ alterations, at its absolute discretion, without any liability whatsoever. *Please note that landscaping and swimming pool are not provided by the developer.

DUBAI CREEK

HARBOUR

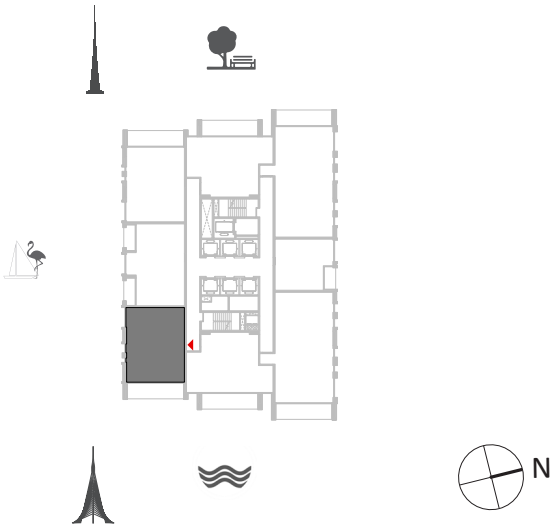
HARBOUR GATE



2 BEDROOM WITH BALCONY

TOWER 2
UNIT 5 | LEVELS 16-23

Suite Area 937.21 Sq.ft. / 87.07 Sq.m.
Balcony Area 203.65 Sq.ft. / 18.92 Sq.m.
Total Area 1140.86 Sq.ft. / 105.99 Sq.m.

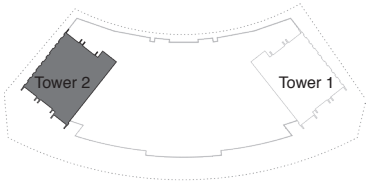
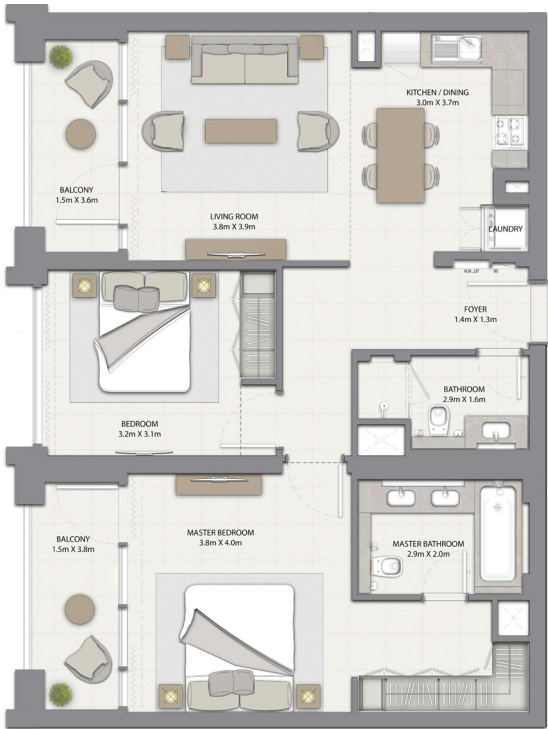


1. All dimensions are in imperial and metric, and measured to structural elements and exclude wall finishes and construction tolerances. 2. All materials, dimensions, and drawings are approximate only. 3. Information is subject to change without notice, at developer's absolute discretion. 4. Actual area may vary from the stated area. 5. Drawings not to scale. 6. All images used are for illustrative purposes only and do not represent the actual size, features, specifications, fittings, and furnishings. 7. The developer reserves the right to make revisions/ alterations, at its absolute discretion, without any liability whatsoever. *Please note that landscaping and swimming pool are not provided by the developer.

DUBAI CREEK

HARBOUR

HARBOUR GATE



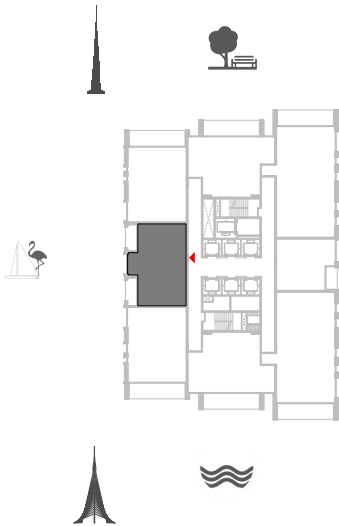
2 BEDROOM WITH BALCONY

TOWER 2
UNIT 6 | LEVELS 16-23

Suite Area 933.88 Sq.ft. / 86.76 Sq.m.

Balcony Area 141.65 Sq.ft. / 13.16 Sq.m.

Total Area 1075.53 Sq.ft. / 99.92 Sq.m.

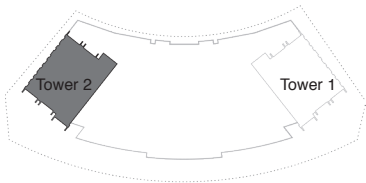


1. All dimensions are in imperial and metric, and measured to structural elements and exclude wall finishes and construction tolerances. 2. All materials, dimensions, and drawings are approximate only. 3. Information is subject to change without notice, at developer's absolute discretion. 4. Actual area may vary from the stated area. 5. Drawings not to scale. 6. All images used are for illustrative purposes only and do not represent the actual size, features, specifications, fittings, and furnishings. 7. The developer reserves the right to make revisions/ alterations, at its absolute discretion, without any liability whatsoever. *Please note that landscaping and swimming pool are not provided by the developer.

DUBAI CREEK

HARBOUR

HARBOUR GATE



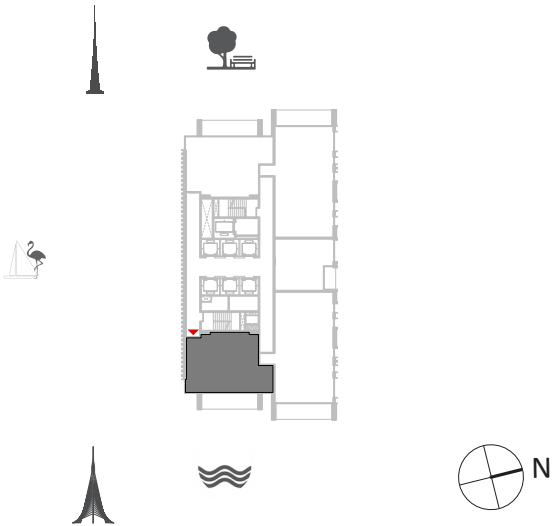
2 BEDROOM WITH BALCONY

TOWER 2
UNIT 4 | LEVELS 24-28

Suite Area 1011.81 Sq.ft. / 94.00 Sq.m.

Balcony Area 200.21 Sq.ft. / 18.60 Sq.m.

Total Area 1212.02 Sq.ft. / 112.60 Sq.m.

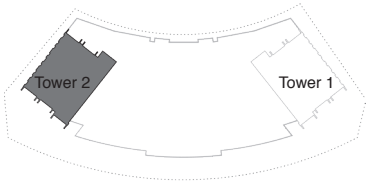


1. All dimensions are in imperial and metric, and measured to structural elements and exclude wall finishes and construction tolerances. 2. All materials, dimensions, and drawings are approximate only. 3. Information is subject to change without notice, at developer's absolute discretion. 4. Actual area may vary from the stated area. 5. Drawings not to scale. 6. All images used are for illustrative purposes only and do not represent the actual size, features, specifications, fittings, and furnishings. 7. The developer reserves the right to make revisions/ alterations, at its absolute discretion, without any liability whatsoever. *Please note that landscaping and swimming pool are not provided by the developer.

DUBAI CREEK

HARBOUR

HARBOUR GATE



2 BEDROOM WITH BALCONY

TOWER 2
UNIT 5 | LEVELS 24-28

Suite Area 1013.96 Sq.ft. / 94.20 Sq.m.

Balcony Area 200.21 Sq.ft. / 18.60 Sq.m.

Total Area 1214.17 Sq.ft. / 112.80 Sq.m.



1. All dimensions are in imperial and metric, and measured to structural elements and exclude wall finishes and construction tolerances. 2. All materials, dimensions, and drawings are approximate only. 3. Information is subject to change without notice, at developer's absolute discretion. 4. Actual area may vary from the stated area. 5. Drawings not to scale. 6. All images used are for illustrative purposes only and do not represent the actual size, features, specifications, fittings, and furnishings. 7. The developer reserves the right to make revisions/ alterations, at its absolute discretion, without any liability whatsoever. *Please note that landscaping and swimming pool are not provided by the developer.