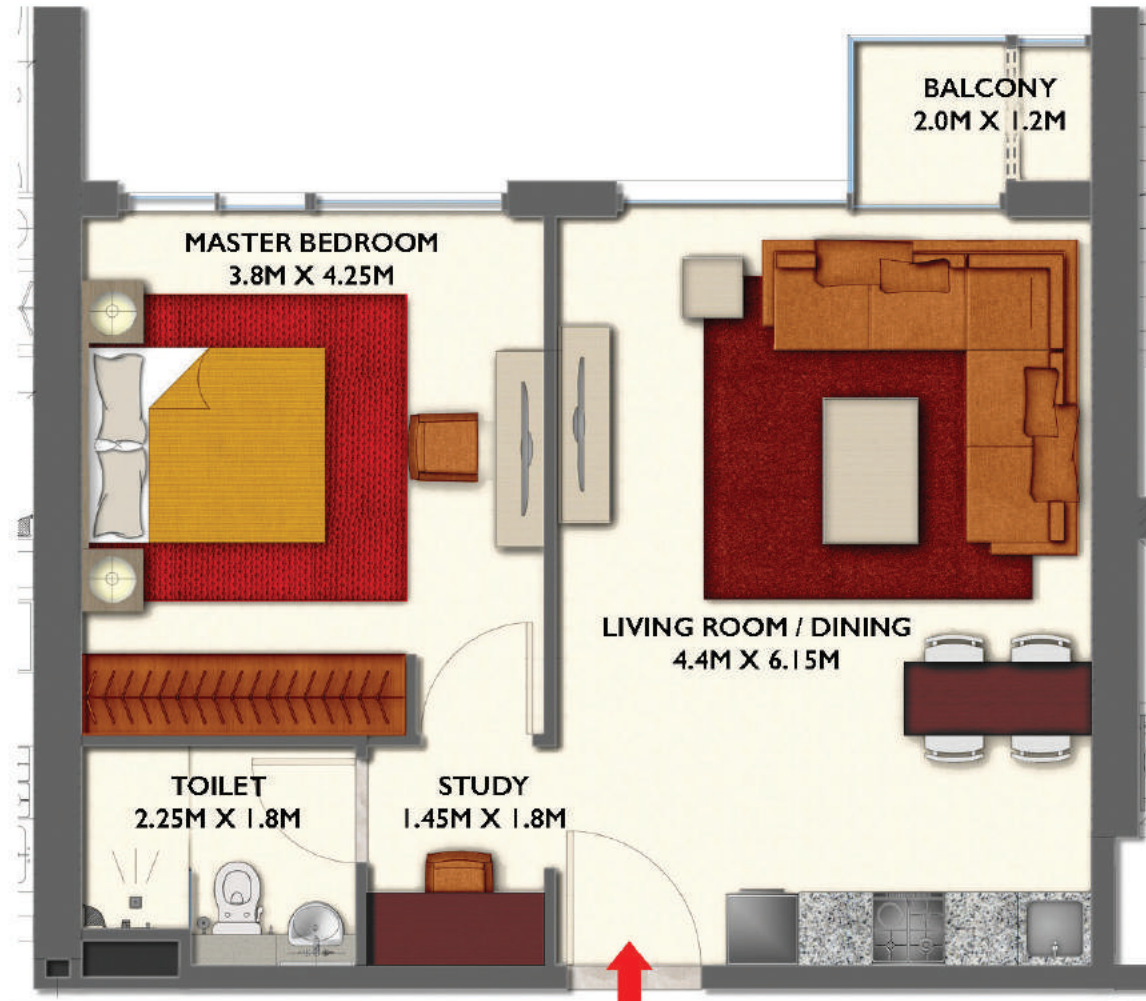




Floor Plans

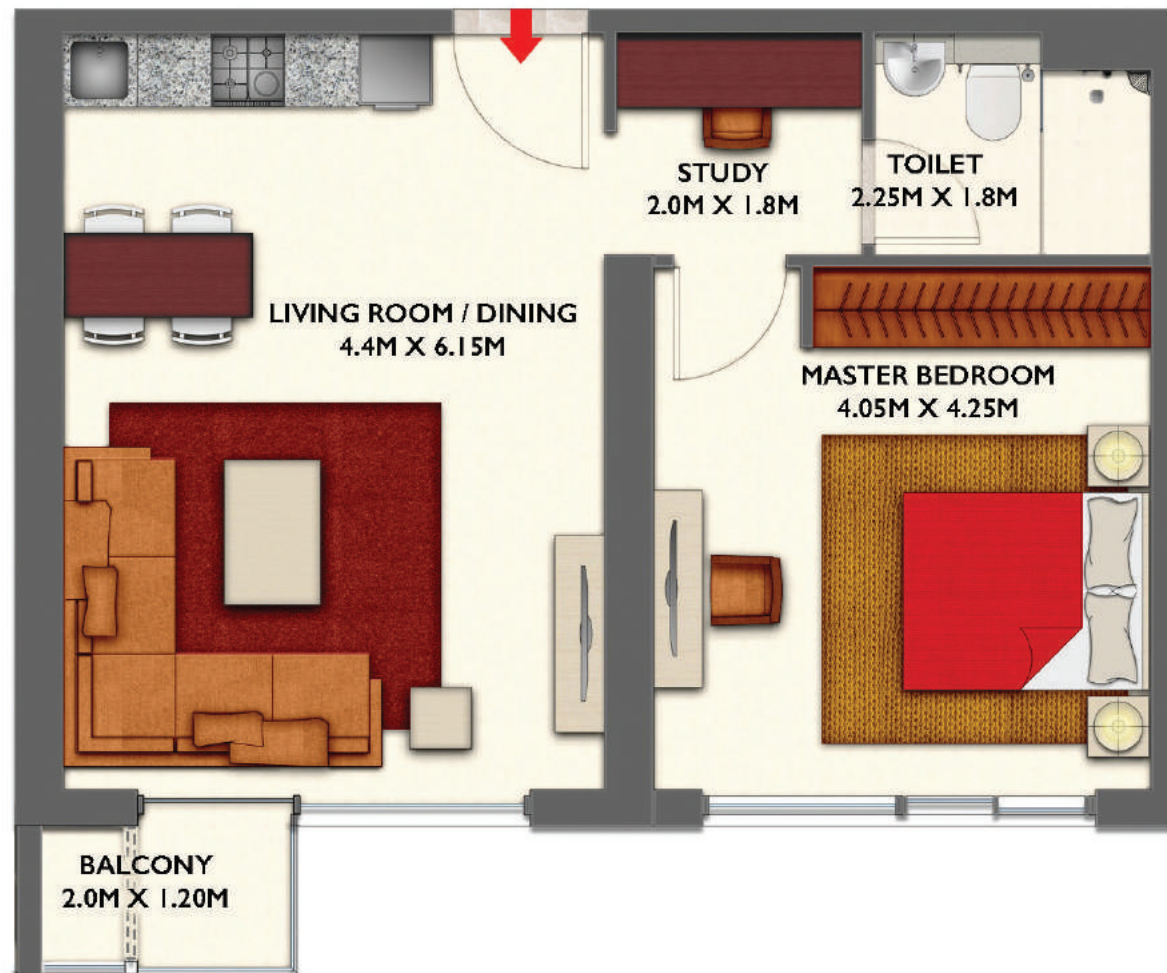
I BEDROOM TYPE B APARTMENT - TYPICAL FLOOR PLAN



Apartment area:	55.11 sq.m	593.20 sq.ft
Balcony area:	2.94 sq.m	31.65 sq.ft
Total area:	58.05 sq.m	624.84 sq.ft

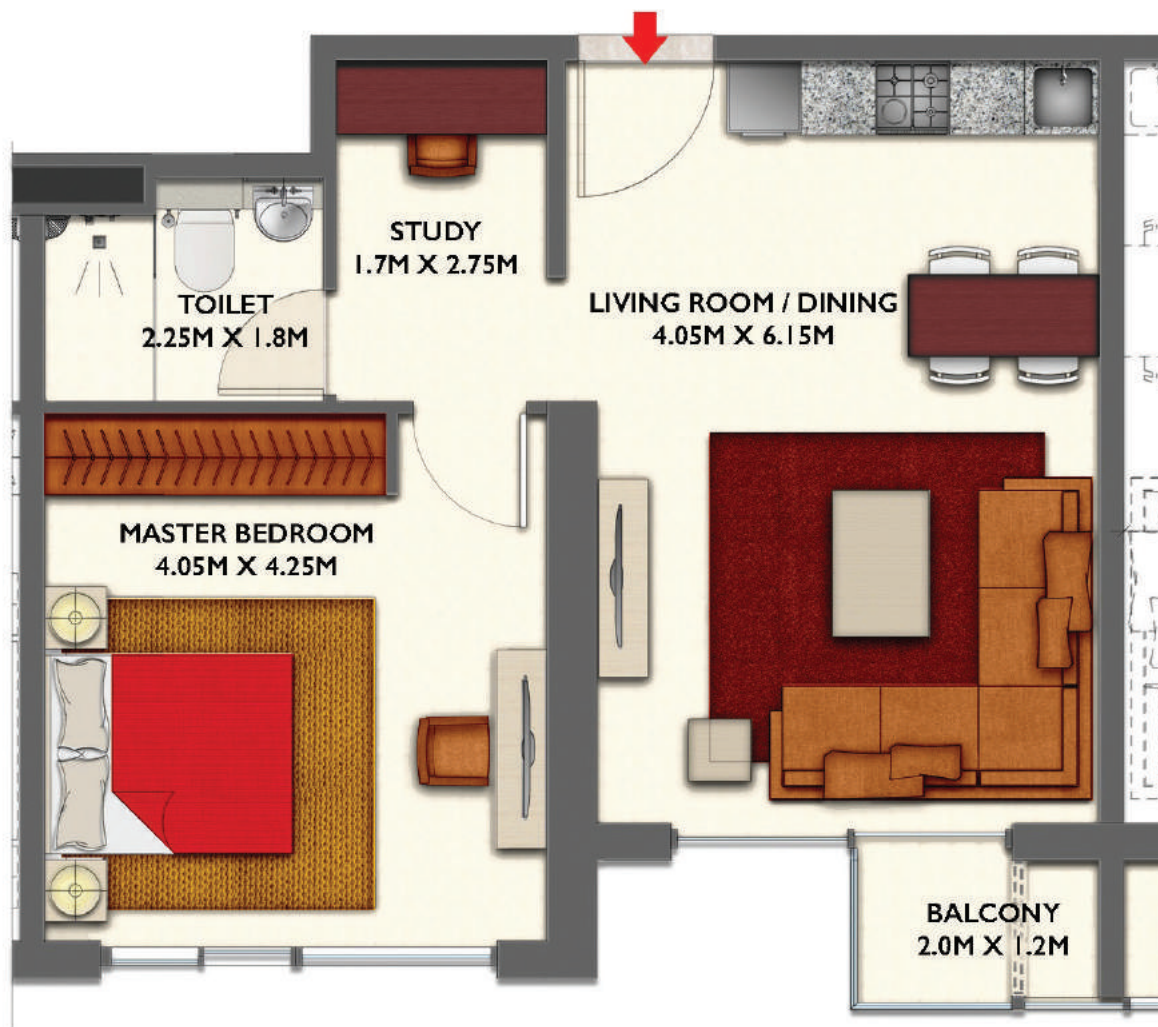
Numbers, square footage and floor plans are approximate. Final dimensions, square footage and floor plans may vary.

I BEDROOM TYPE C APARTMENT - TYPICAL FLOOR PLAN



Apartment area:	58.04 sq.m	624.74 sq.ft
Balcony area:	2.81 sq.m	30.25 sq.ft
Total area:	60.85 sq.m	654.98 sq.ft

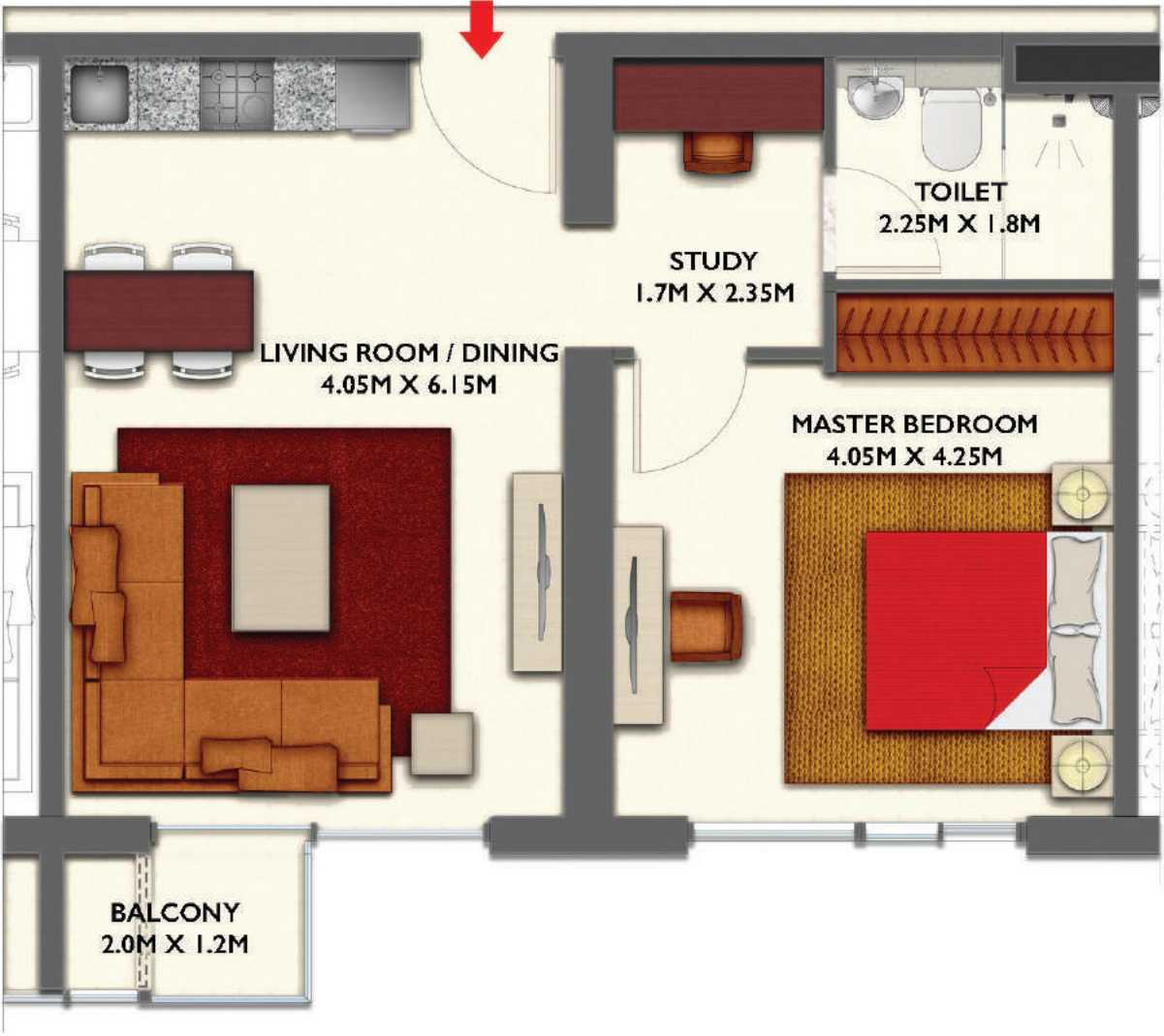
I BEDROOM TYPE D APARTMENT - TYPICAL FLOOR PLAN



Apartment area:	57.07 sq.m	614.30 sq.ft
Balcony area:	2.82 sq.m	30.35 sq.ft
Total area:	59.89 sq.m	644.65 sq.ft

Numbers, square footage and floor plans are approximate. Final dimensions, square footage and floor plans may vary.

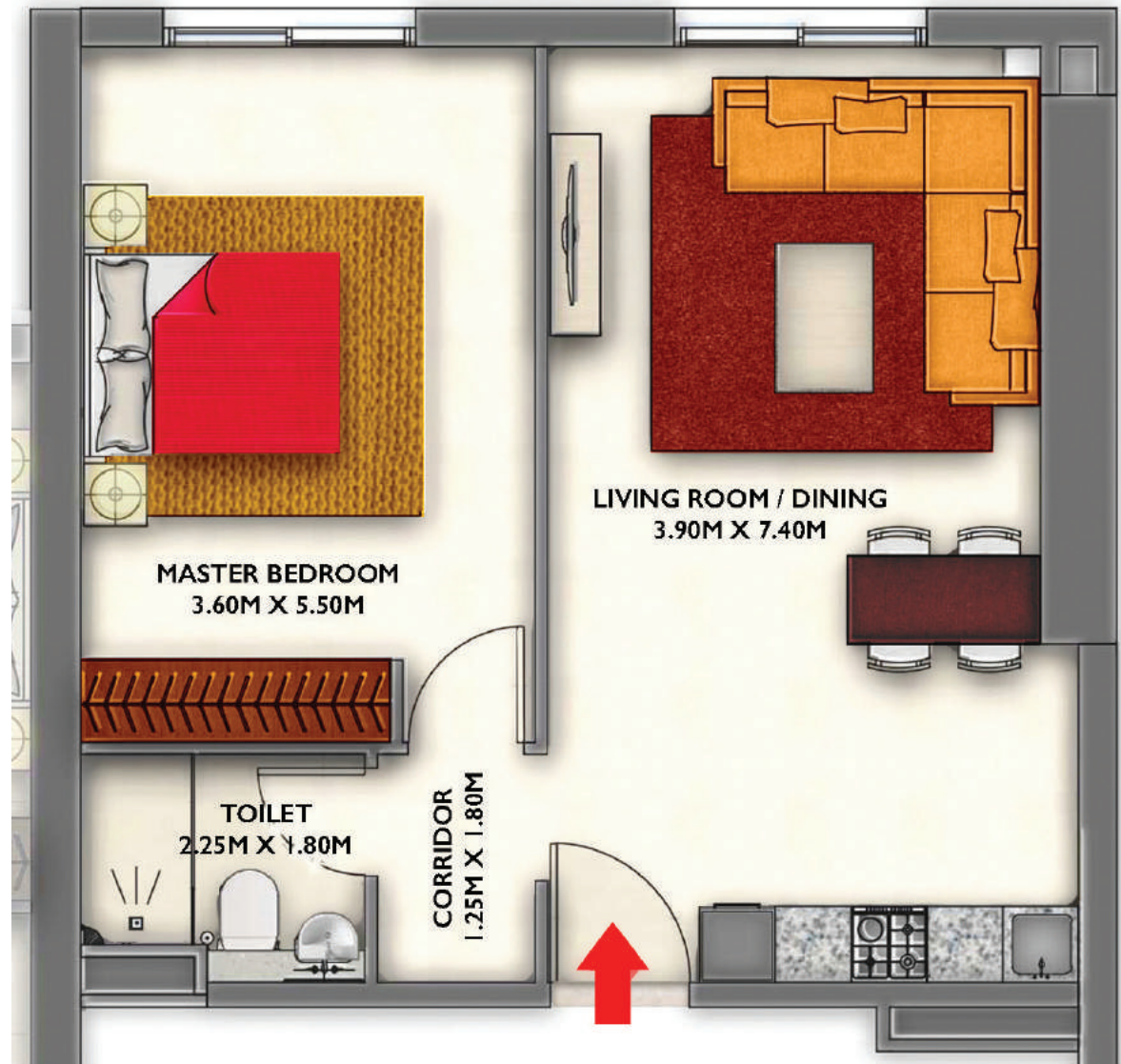
I BEDROOM TYPE E APARTMENT - TYPICAL FLOOR PLAN



Apartment area:	55.18 sq.m	593.95 sq.ft
Balcony area:	2.82 sq.m	30.35 sq.ft
Total area:	58 sq.m	624.31 sq.ft

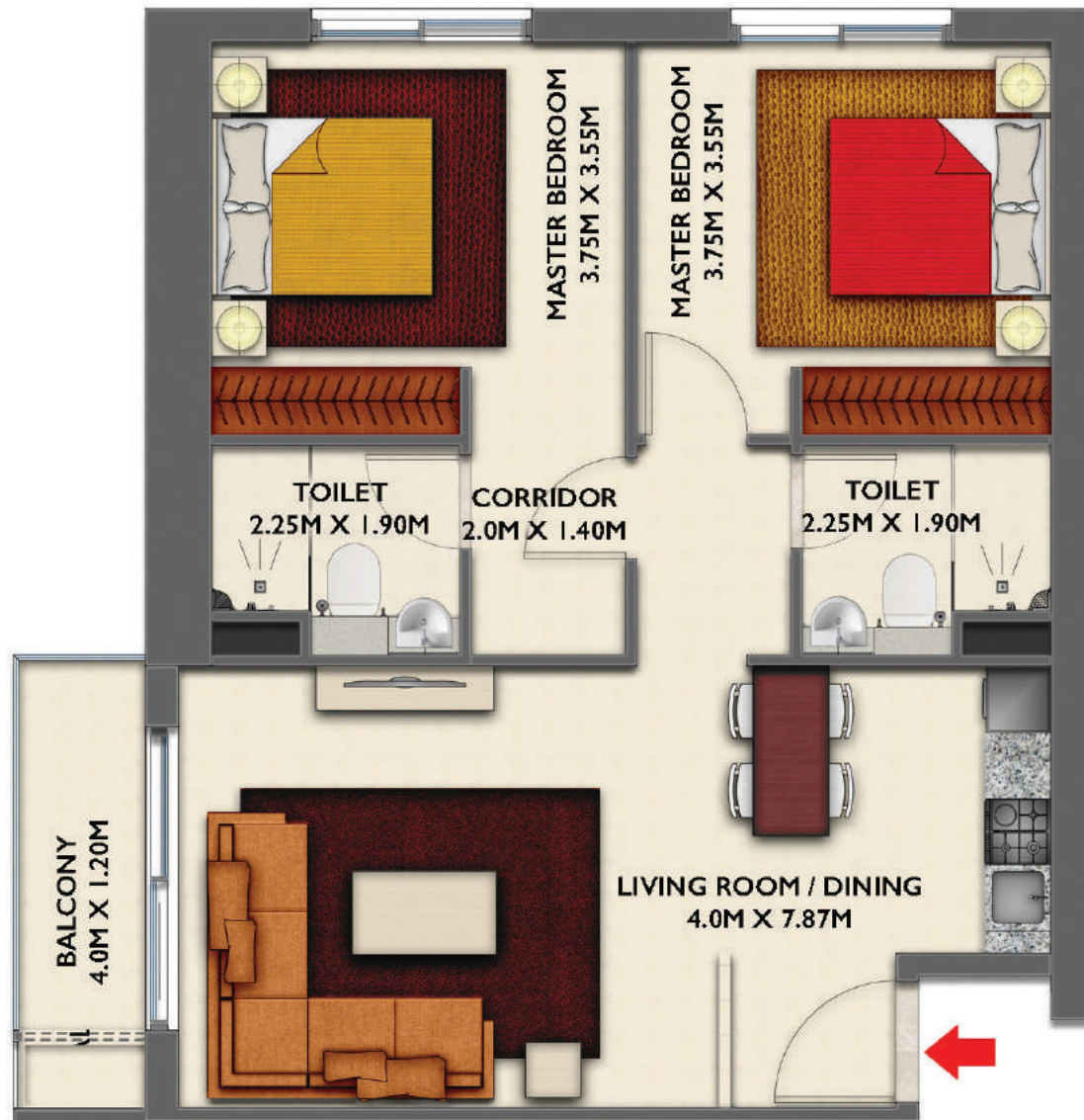
Numbers, square footage and floor plans are approximate. Final dimensions, square footage and floor plans may vary.

I BEDROOM TYPE G APARTMENT - TYPICAL FLOOR PLAN



Apartment area:	61.72 sq.m	664.35 sq.ft
Balcony area:	-	-
Total area:	61.72 sq.m	664.35 sq.ft

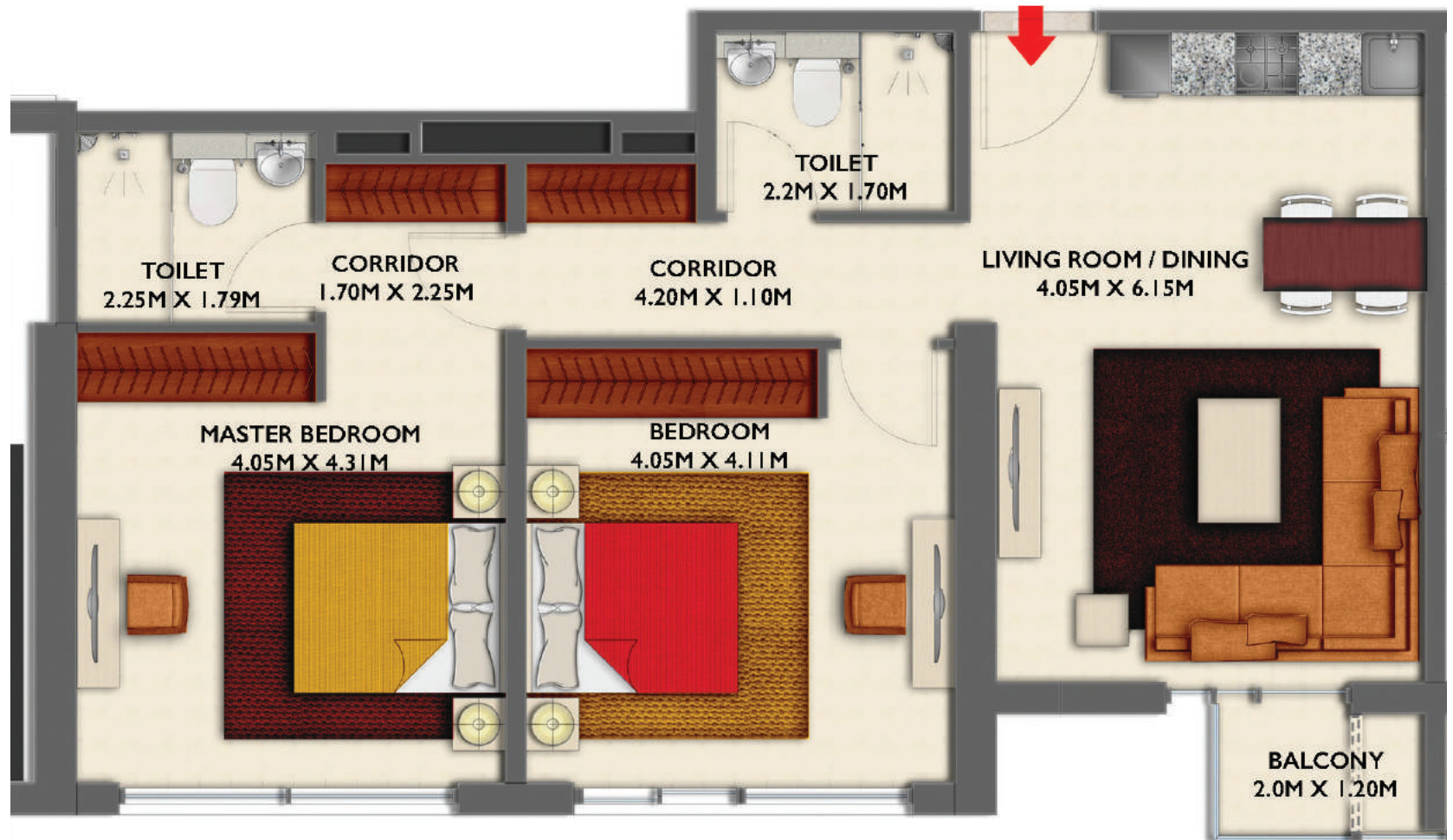
2 BEDROOM TYPE A APARTMENT - TYPICAL FLOOR PLAN



Apartment area:	77.82 sq.m	837.65 sq.ft
Balcony area:	5.31 sq.m	59.16 sq.ft
Total area:	83.23 sq.m	895.88 sq.ft

Numbers, square footage and floor plans are approximate. Final dimensions, square footage and floor plans may vary.

2 BEDROOM TYPE F APARTMENT - TYPICAL FLOOR PLAN



Apartment area:	84.25 sq.m	906.86 sq.ft
Balcony area:	2.81 sq.m	30.25 sq.ft
Total area:	87.06 sq.m	937.11 sq.ft

Numbers, square footage and floor plans are approximate. Final dimensions, square footage and floor plans may vary.