

DOWNTOWN
DUBAI

GRANDE

SIGNATURE RESIDENCES

FLOOR PLANS

EMAAR

DOWNTOWN DUBAI

GRANDE

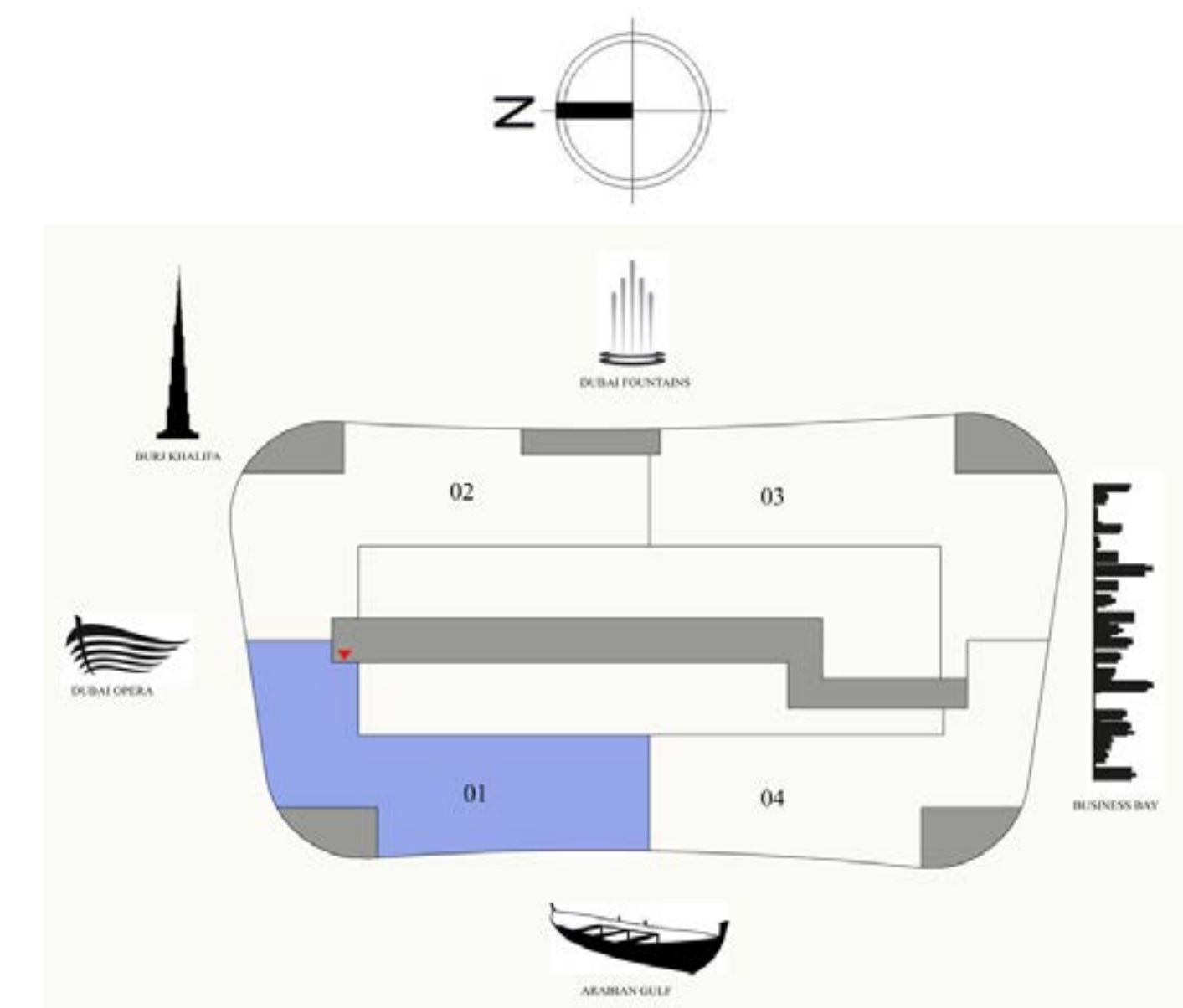
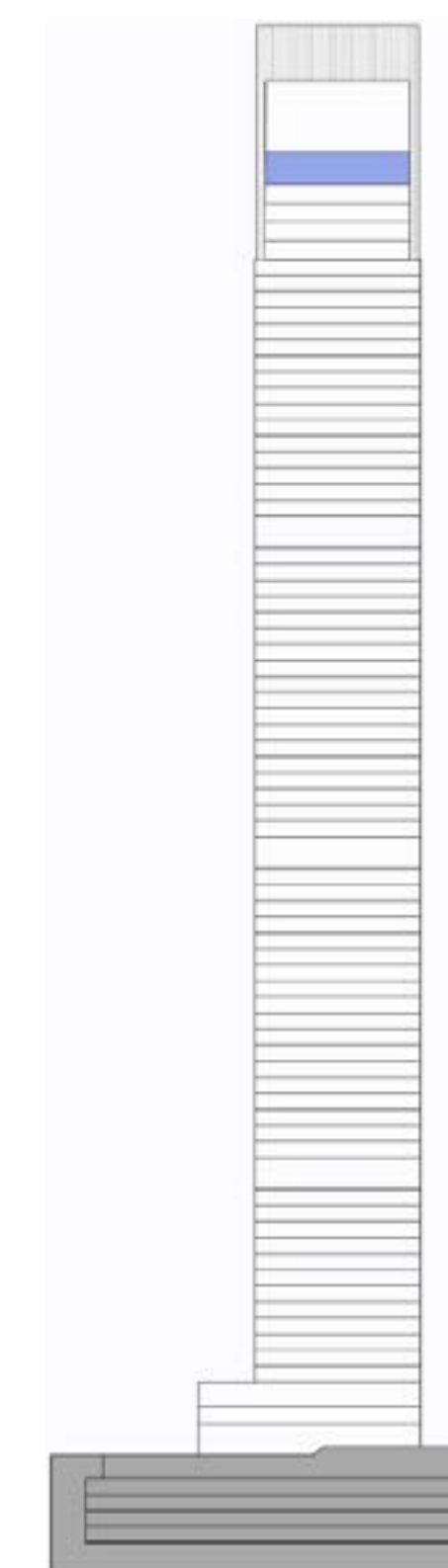
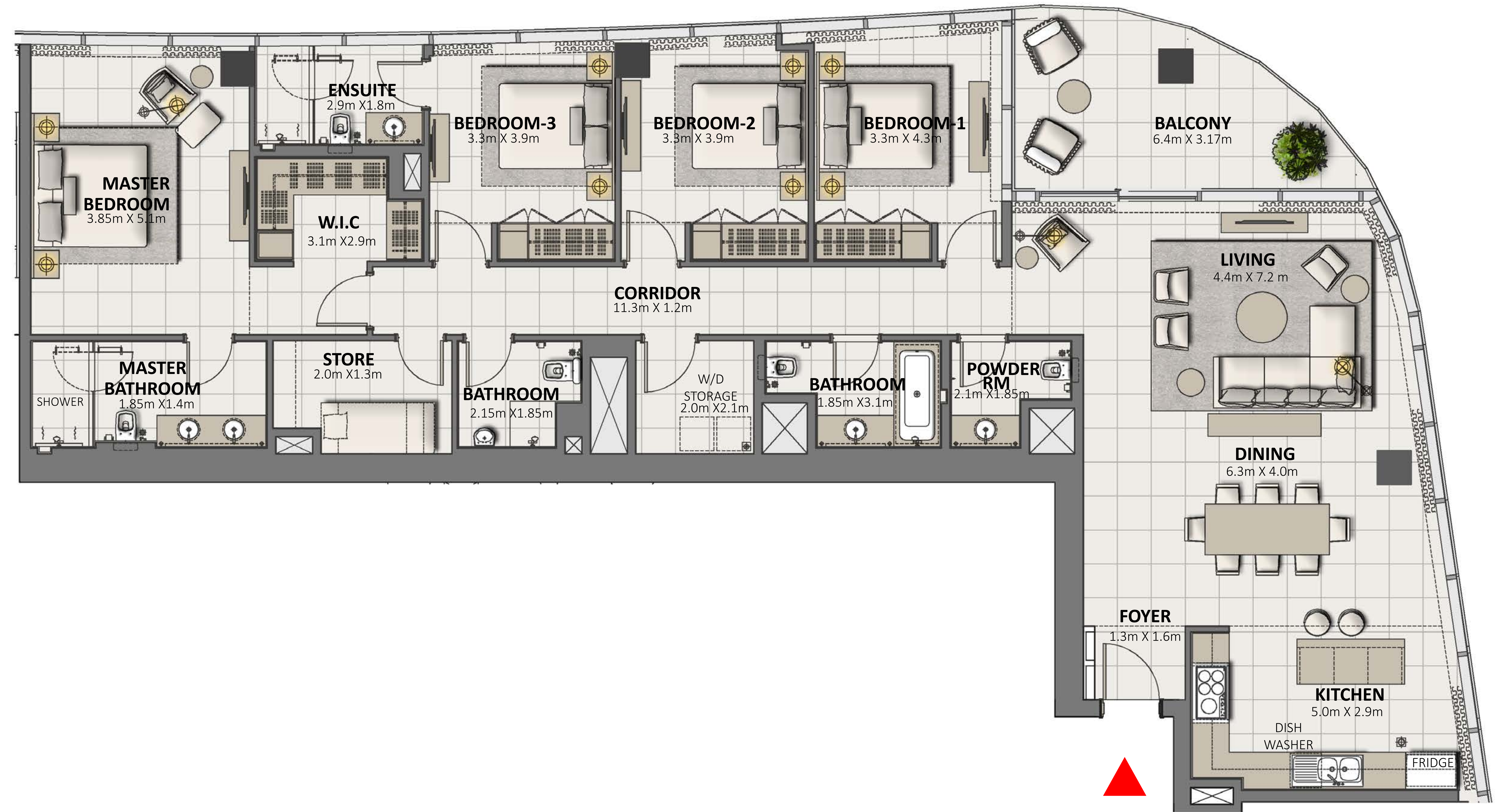
SIGNATURE RESIDENCES

LEVEL PENTHOUSE

4 BEDROOM

UNIT 1

SUITE AREA	2176.79 SQ.FT.	202.23 SQ.M.
BALCONY AREA	173.51 SQ.FT.	16.12 SQ.M.
TOTAL AREA	2350.30 SQ.FT.	218.35 SQ.M.



FLOOR PLAN 1. All dimensions are in imperial and metric, and measured from finish to finish excluding construction tolerances. 2. All materials, dimensions, and drawings are approximate only. 3. Information is subject to change without notice, at developer's absolute discretion. 4. Actual area may vary from the stated area. 5. Drawings not to scale. 6. All images used are for illustrative purposes only and do not represent the actual size, features, specifications, fittings, and furnishings. 7. The developer reserves the right to make revisions / alterations, at it's absolute discretion, without any liability whatsoever.

DOWNTOWN DUBAI

GRANDE

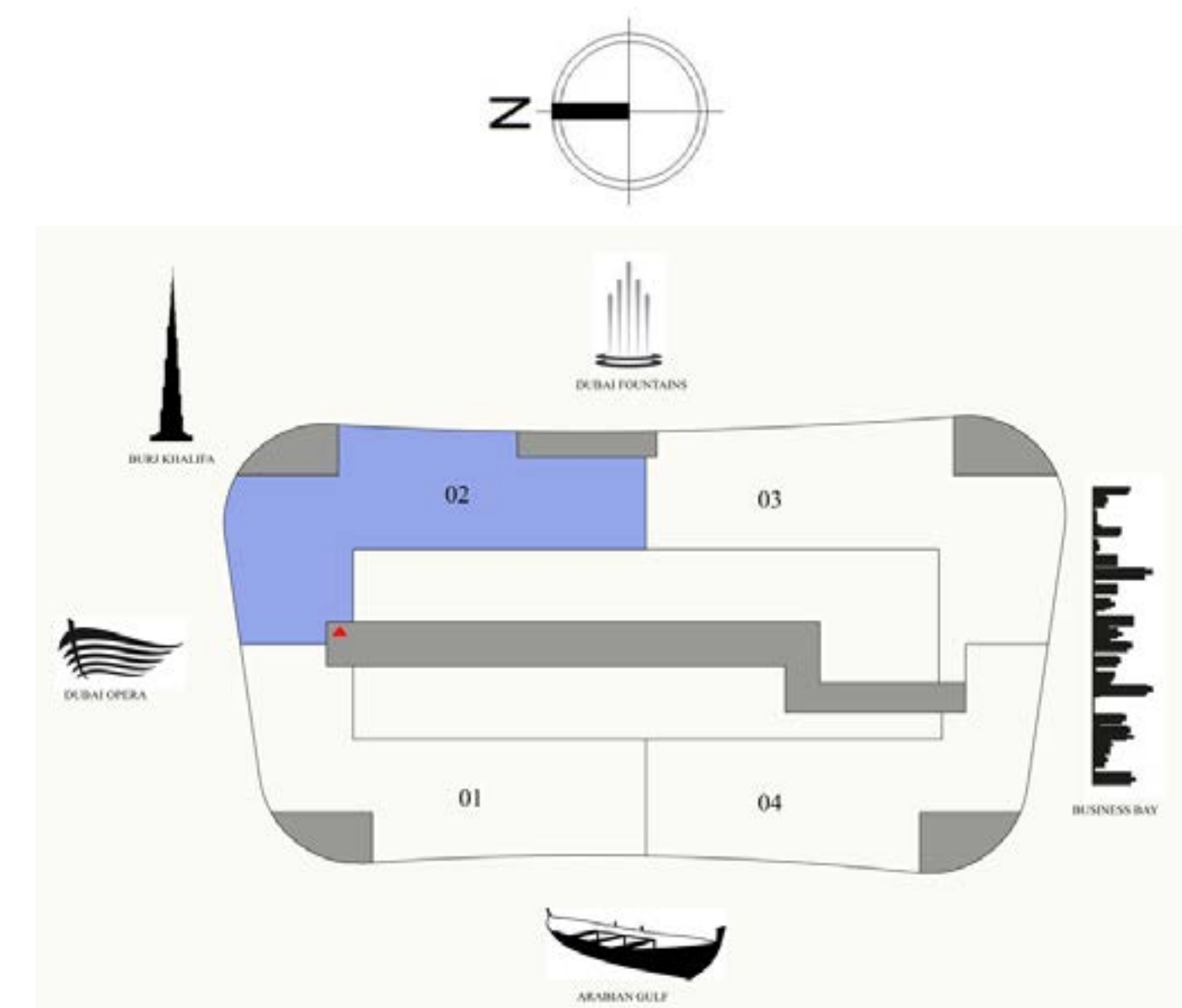
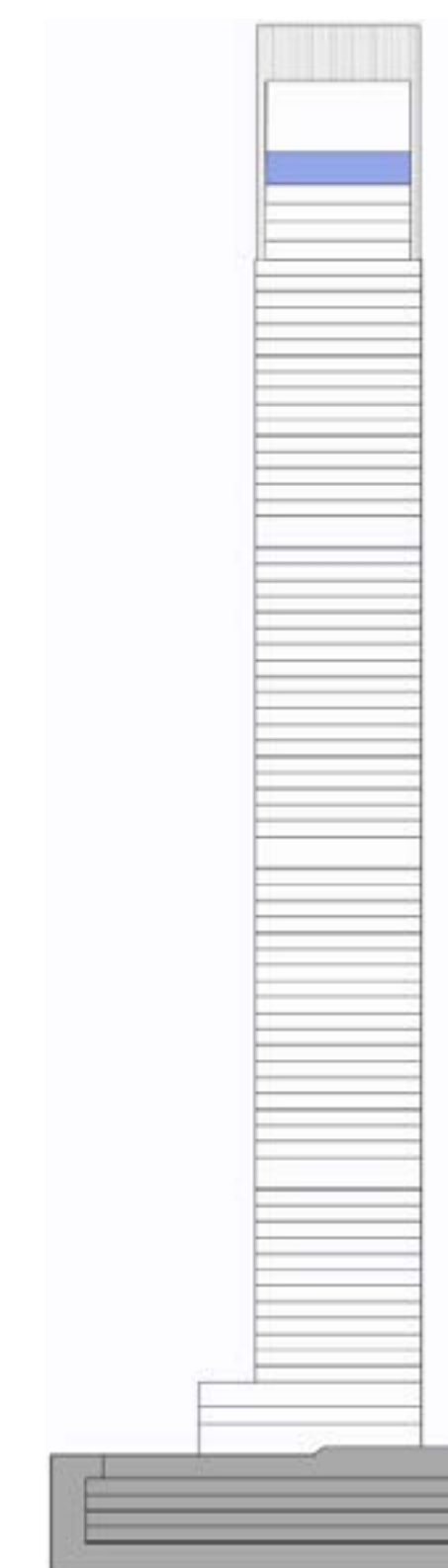
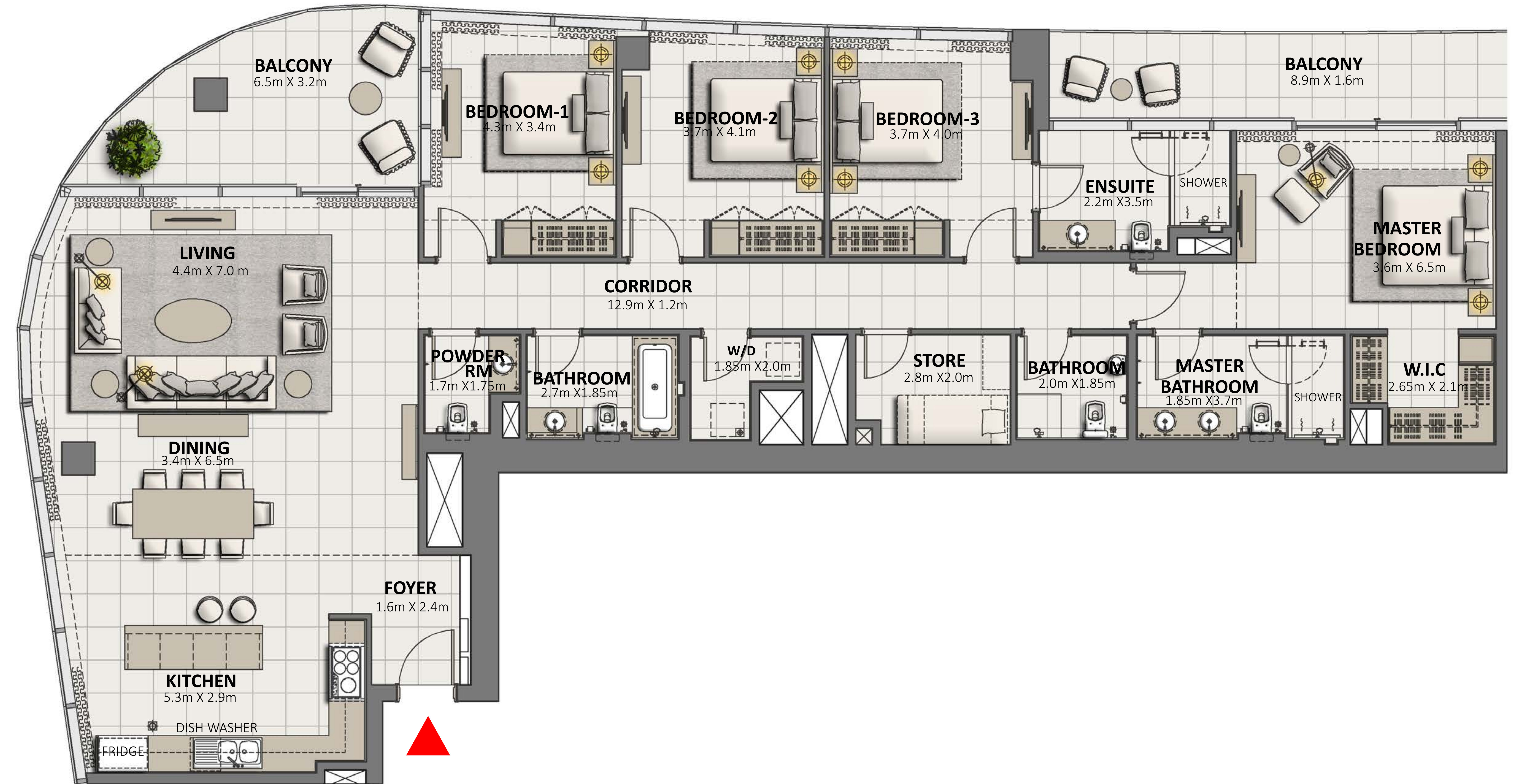
SIGNATURE RESIDENCES

LEVEL PENTHOUSE

4 BEDROOM

UNIT 2

SUITE AREA	2257.19 SQ.FT.	209.70 SQ.M.
BALCONY AREA	330.45 SQ.FT.	30.70 SQ.M.
TOTAL AREA	2587.64 SQ.FT.	240.40 SQ.M.



FLOOR PLAN 1. All dimensions are in imperial and metric, and measured from finish to finish excluding construction tolerances. 2. All materials, dimensions, and drawings are approximate only. 3. Information is subject to change without notice, at developer's absolute discretion. 4. Actual area may vary from the stated area. 5. Drawings not to scale. 6. All images used are for illustrative purposes only and do not represent the actual size, features, specifications, fittings, and furnishings. 7. The developer reserves the right to make revisions / alterations, at it's absolute discretion, without any liability whatsoever.

DOWNTOWN DUBAI

GRANDE

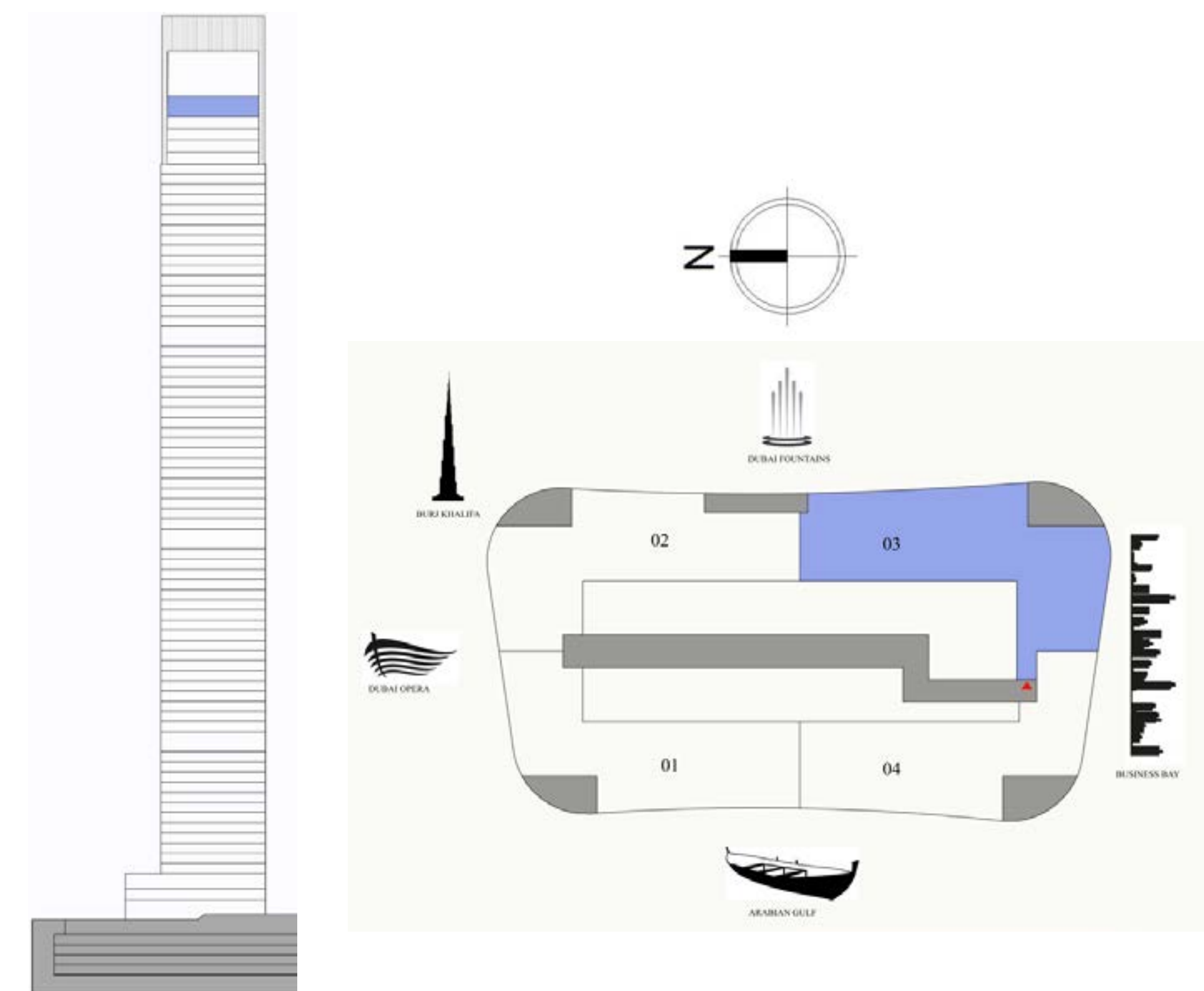
SIGNATURE RESIDENCES

LEVEL PENTHOUSE

4 BEDROOM

UNIT 3

SUITE AREA	2482.27 SQ.FT.	230.61 SQ.M.
BALCONY AREA	205.91 SQ.FT.	19.13 SQ.M.
TOTAL AREA	2688.18 SQ.FT.	249.74 SQ.M.



FLOOR PLAN 1. All dimensions are in imperial and metric, and measured from finish to finish excluding construction tolerances. 2. All materials, dimensions, and drawings are approximate only. 3. Information is subject to change without notice, at developer's absolute discretion. 4. Actual area may vary from the stated area. 5. Drawings not to scale. 6. All images used are for illustrative purposes only and do not represent the actual size, features, specifications, fittings, and furnishings. 7. The developer reserves the right to make revisions / alterations, at it's absolute discretion, without any liability whatsoever.

DOWNTOWN DUBAI

GRANDE

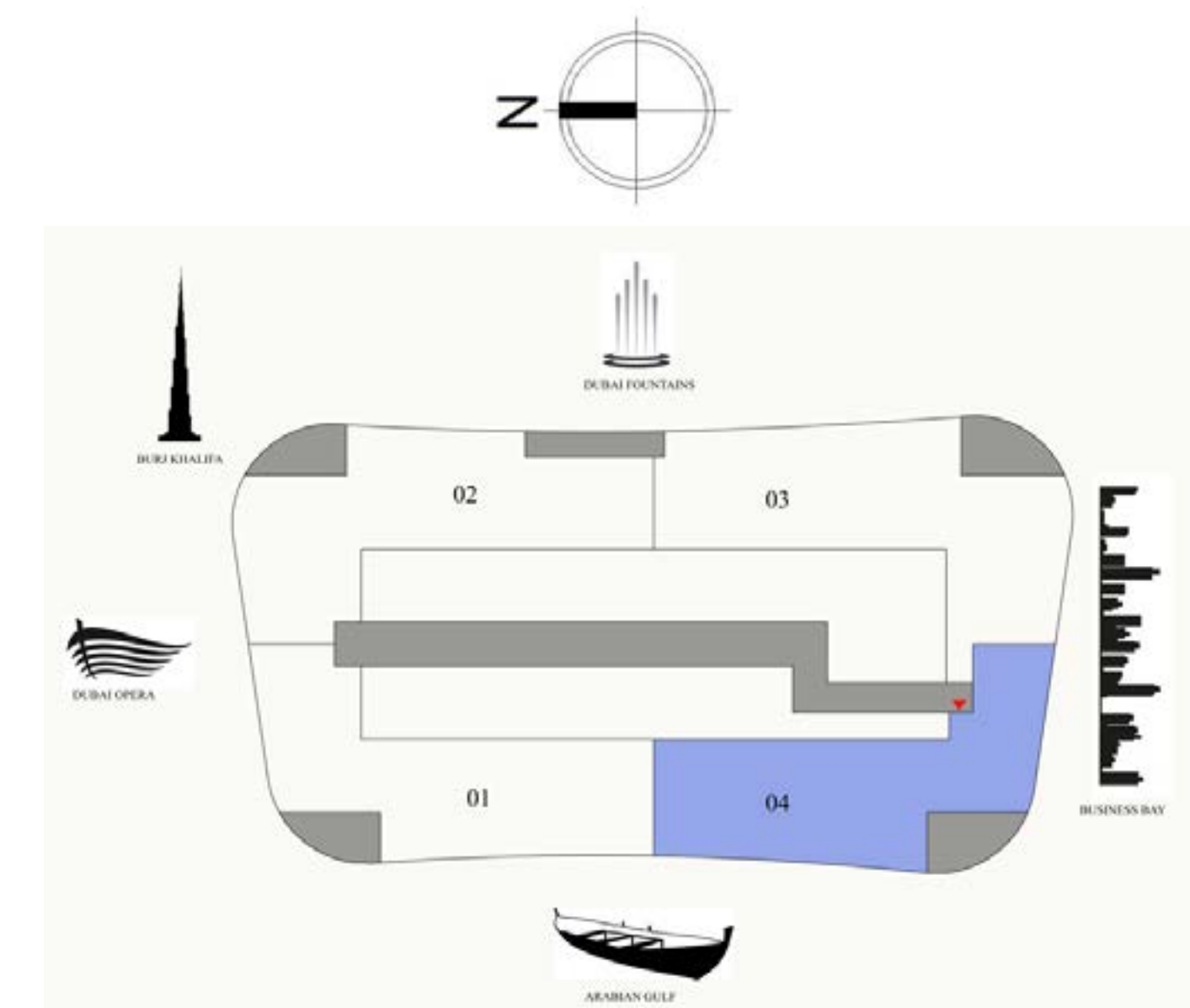
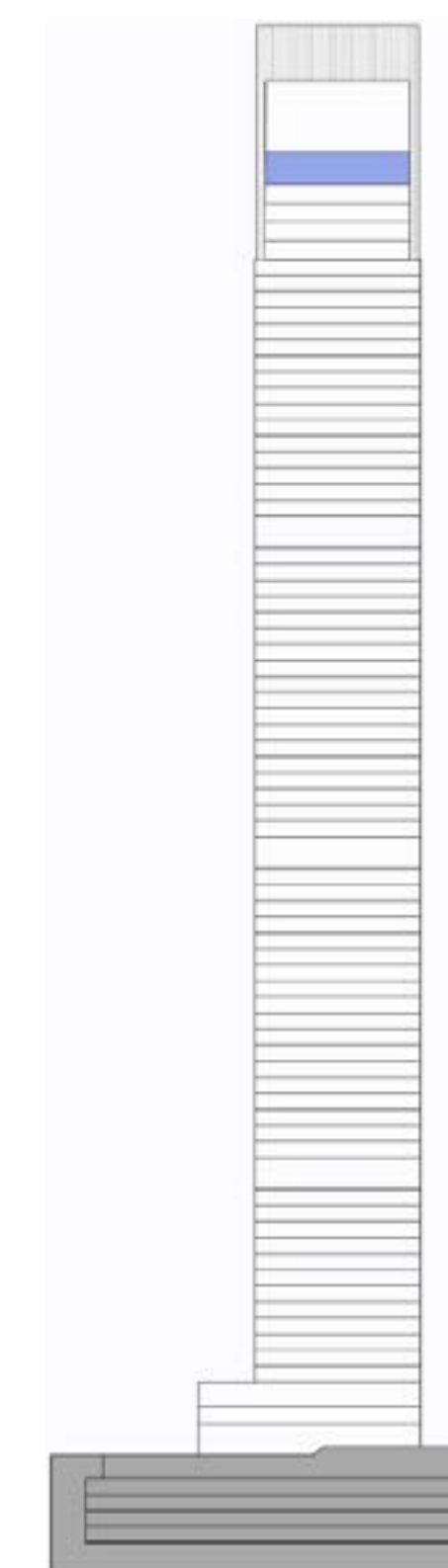
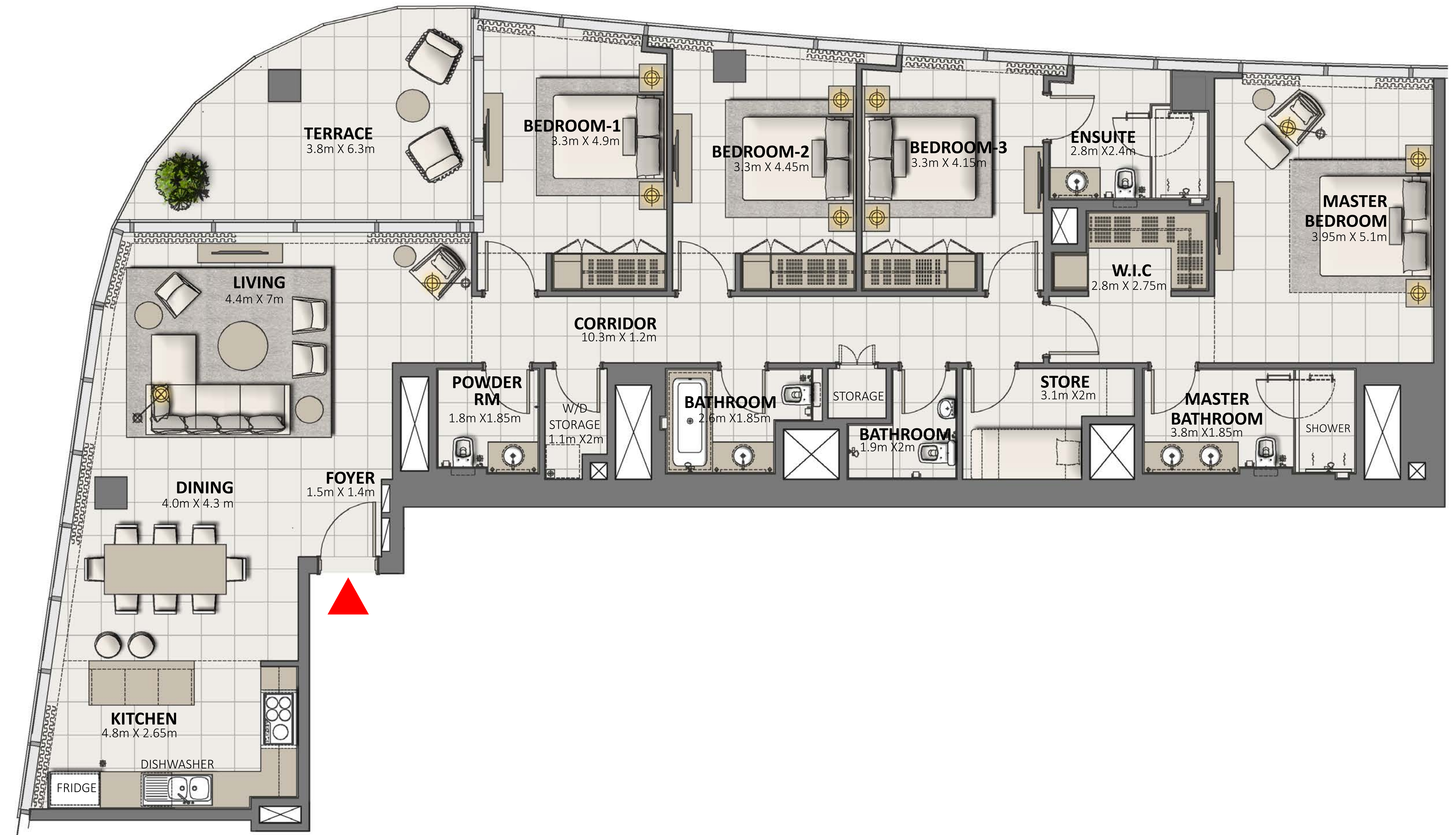
SIGNATURE RESIDENCES

LEVEL PENTHOUSE

4 BEDROOM

UNIT 4

SUITE AREA	2112.42 SQ.FT.	196.25 SQ.M.
BALCONY AREA	205.70 SQ.FT.	19.11 SQ.M.
TOTAL AREA	2318.12 SQ.FT.	215.36 SQ.M.



FLOOR PLAN 1. All dimensions are in imperial and metric, and measured from finish to finish excluding construction tolerances. 2. All materials, dimensions, and drawings are approximate only. 3. Information is subject to change without notice, at developer's absolute discretion. 4. Actual area may vary from the stated area. 5. Drawings not to scale. 6. All images used are for illustrative purposes only and do not represent the actual size, features, specifications, fittings, and furnishings. 7. The developer reserves the right to make revisions / alterations, at it's absolute discretion, without any liability whatsoever.

DOWNTOWN DUBAI

GRANDE

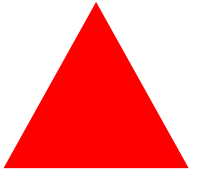
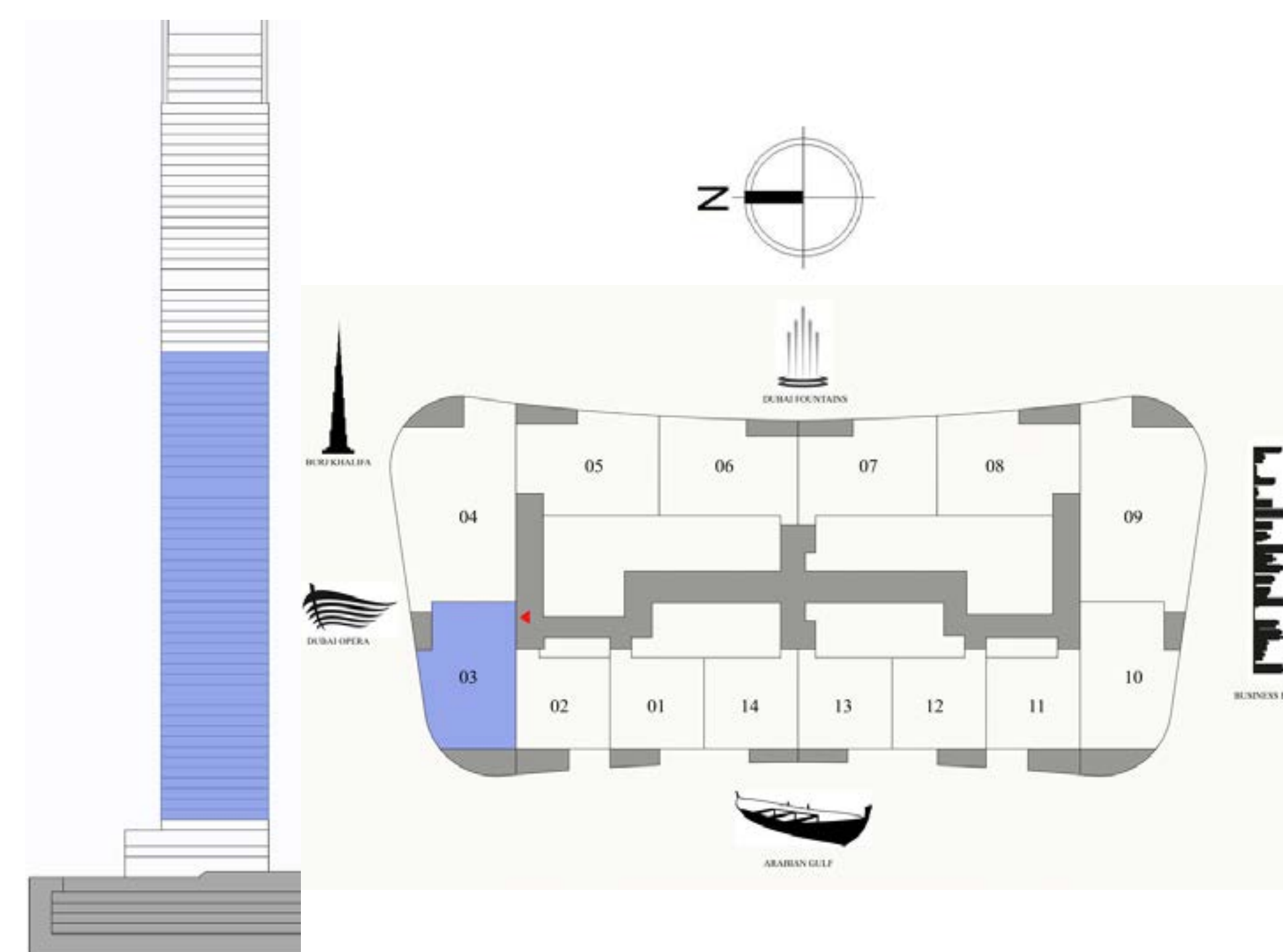
SIGNATURE RESIDENCES

LEVEL 4-52

2 BEDROOM

UNIT 3

SUITE AREA	1083.28 SQ.FT.	100.64 SQ.M.
BALCONY AREA	161.89 SQ.FT.	15.04 SQ.M.
TOTAL AREA	1245.17 SQ.FT.	115.68 SQ.M.



FLOOR PLAN 1. All dimensions are in imperial and metric, and measured from finish to finish excluding construction tolerances. 2. All materials, dimensions, and drawings are approximate only. 3. Information is subject to change without notice, at developer's absolute discretion. 4. Actual area may vary from the stated area. 5. Drawings not to scale. 6. All images used are for illustrative purposes only and do not represent the actual size, features, specifications, fittings, and furnishings. 7. The developer reserves the right to make revisions / alterations, at it's absolute discretion, without any liability whatsoever.

DOWNTOWN DUBAI

GRANDE

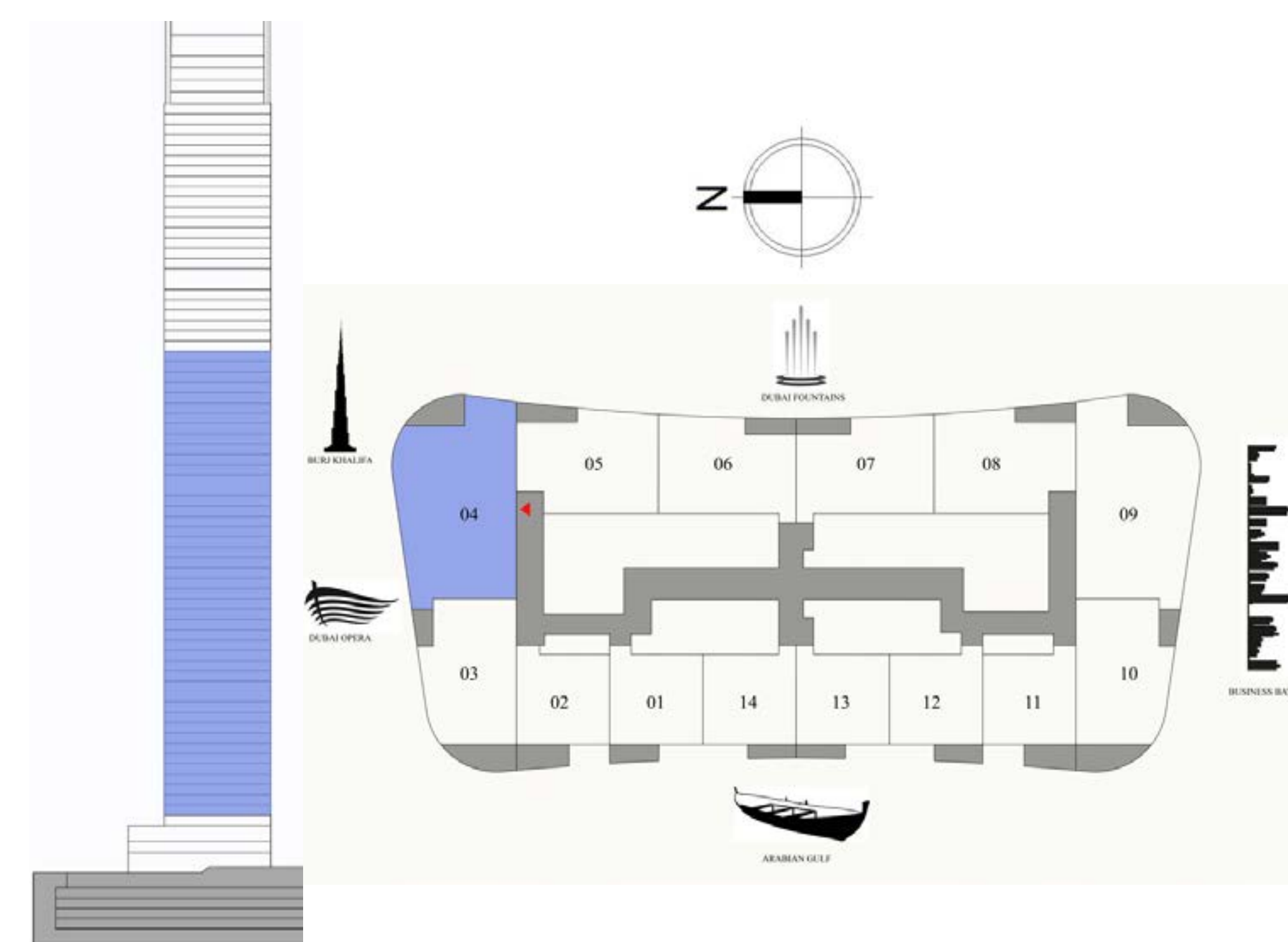
SIGNATURE RESIDENCES

LEVEL 4-52

3 BEDROOM

UNIT 4

SUITE AREA	1756.67 SQ.FT.	163.20 SQ.M.
BALCONY AREA	104.73 SQ.FT.	9.73 SQ.M.
TOTAL AREA	1861.40 SQ.FT.	172.93 SQ.M.



FLOOR PLAN 1. All dimensions are in imperial and metric, and measured from finish to finish excluding construction tolerances. 2. All materials, dimensions, and drawings are approximate only. 3. Information is subject to change without notice, at developer's absolute discretion. 4. Actual area may vary from the stated area. 5. Drawings not to scale. 6. All images used are for illustrative purposes only and do not represent the actual size, features, specifications, fittings, and furnishings. 7. The developer reserves the right to make revisions / alterations, at its absolute discretion, without any liability whatsoever.

DOWNTOWN DUBAI

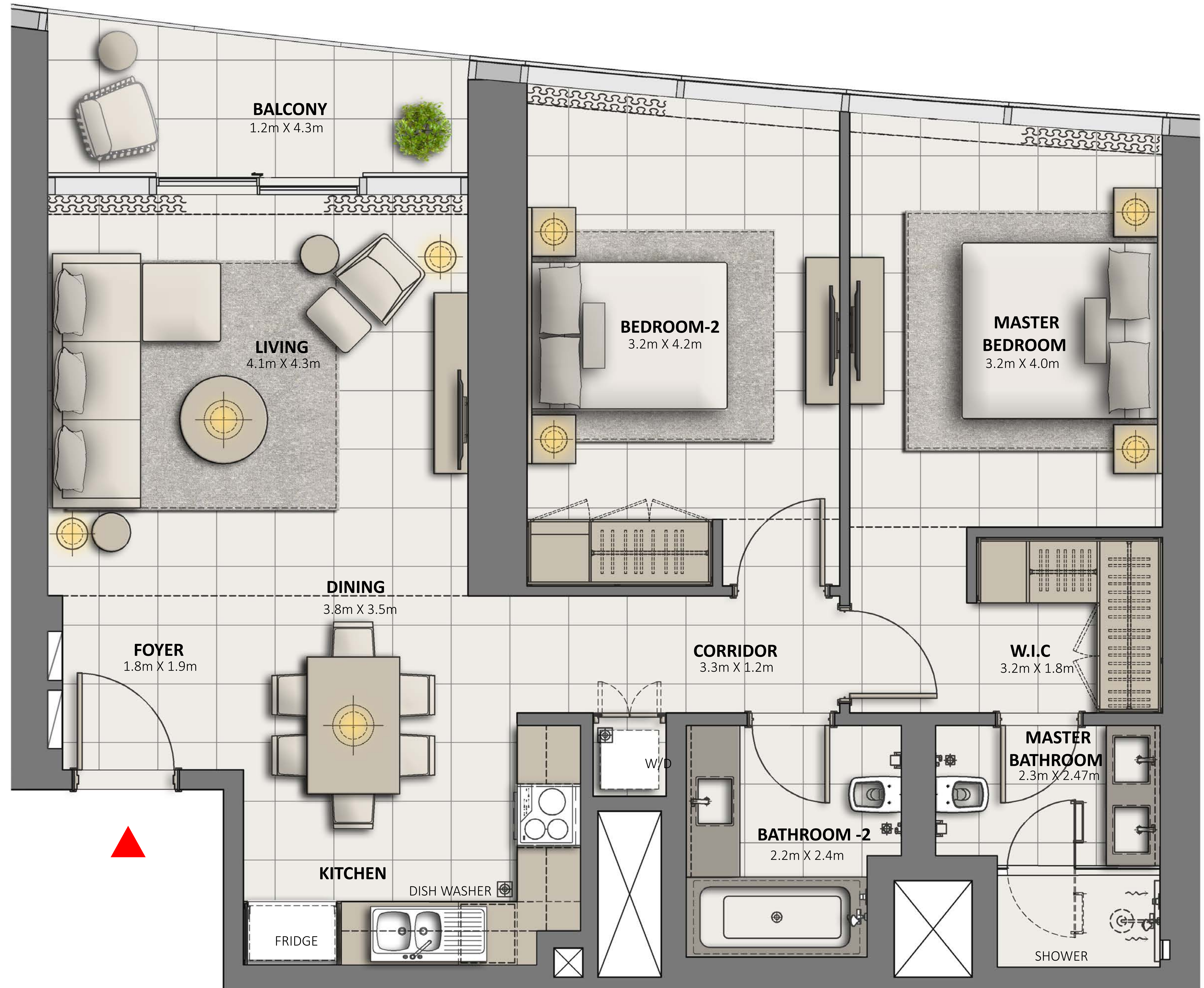
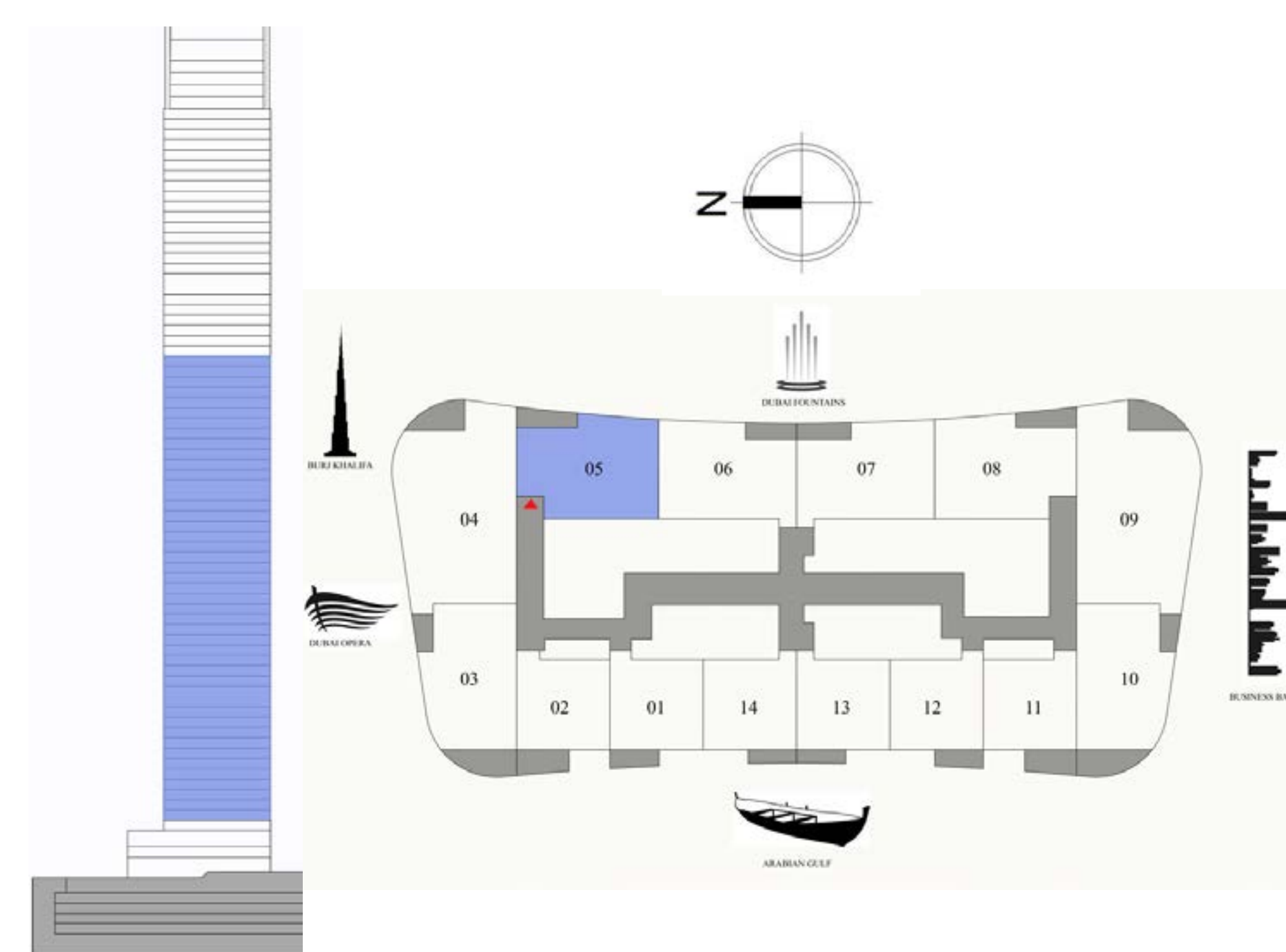
GRANDE
SIGNATURE RESIDENCES

LEVEL 4-52

2 BEDROOM

UNIT 5

SUITE AREA	1124.29 SQ.FT.	104.45 SQ.M.
BALCONY AREA	67.60 SQ.FT.	6.28 SQ.M.
TOTAL AREA	1191.89 SQ.FT.	110.73 SQ.M.



FLOOR PLAN 1. All dimensions are in imperial and metric, and measured from finish to finish excluding construction tolerances. 2. All materials, dimensions, and drawings are approximate only. 3. Information is subject to change without notice, at developer's absolute discretion. 4. Actual area may vary from the stated area. 5. Drawings not to scale. 6. All images used are for illustrative purposes only and do not represent the actual size, features, specifications, fittings, and furnishings. 7. The developer reserves the right to make revisions / alterations, at it's absolute discretion, without any liability whatsoever.

DOWNTOWN DUBAI

GRANDE

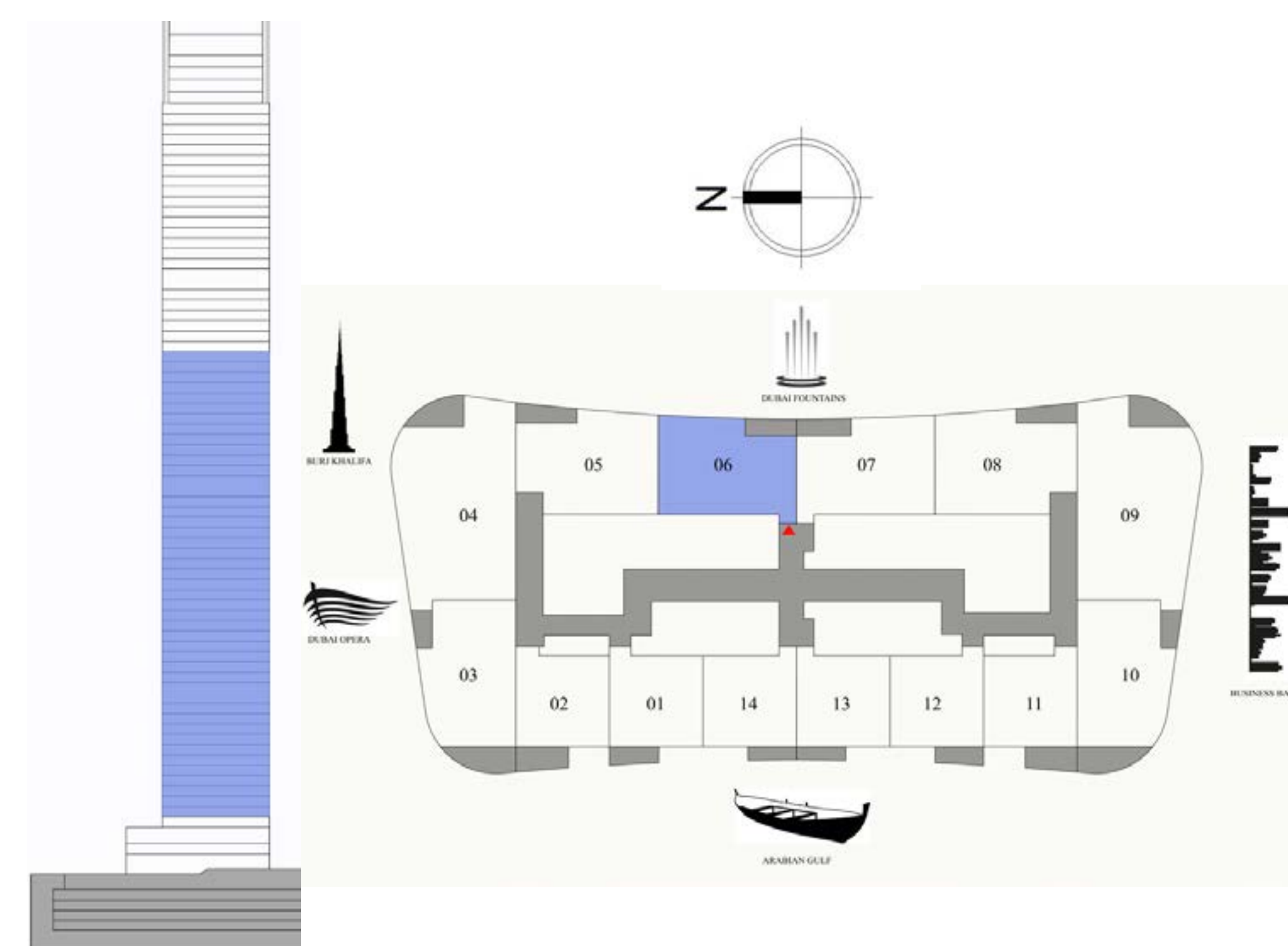
SIGNATURE RESIDENCES

LEVEL 4-52

2 BEDROOM

UNIT 6

SUITE AREA	1071.98 SQ.FT.	99.59 SQ.M.
BALCONY AREA	65.12 SQ.FT.	6.05 SQ.M.
TOTAL AREA	1137.10 SQ.FT.	105.64 SQ.M.



FLOOR PLAN 1. All dimensions are in imperial and metric, and measured from finish to finish excluding construction tolerances. 2. All materials, dimensions, and drawings are approximate only. 3. Information is subject to change without notice, at developer's absolute discretion. 4. Actual area may vary from the stated area. 5. Drawings not to scale. 6. All images used are for illustrative purposes only and do not represent the actual size, features, specifications, fittings, and furnishings. 7. The developer reserves the right to make revisions / alterations, at it's absolute discretion, without any liability whatsoever.

DOWNTOWN DUBAI

GRANDE

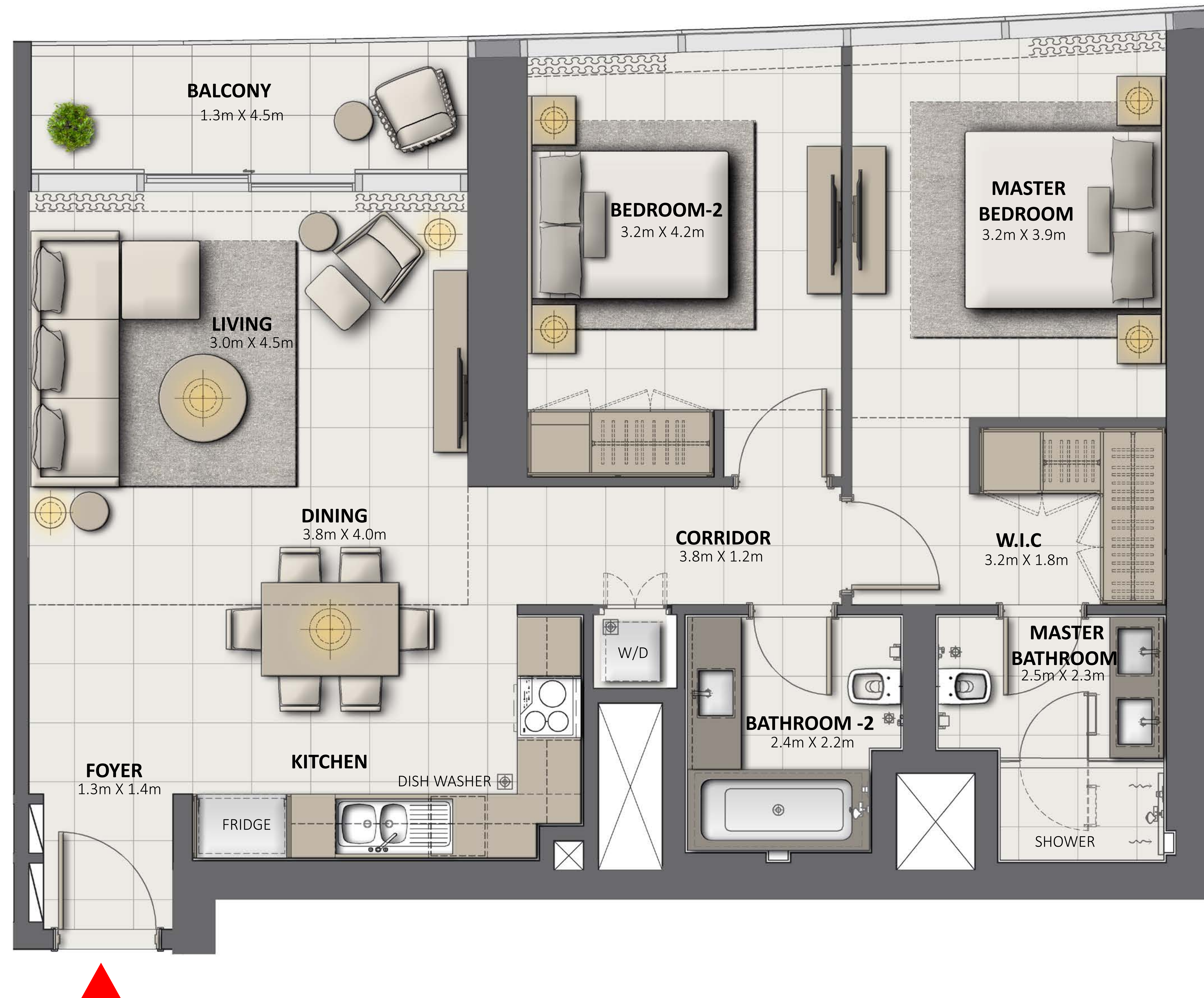
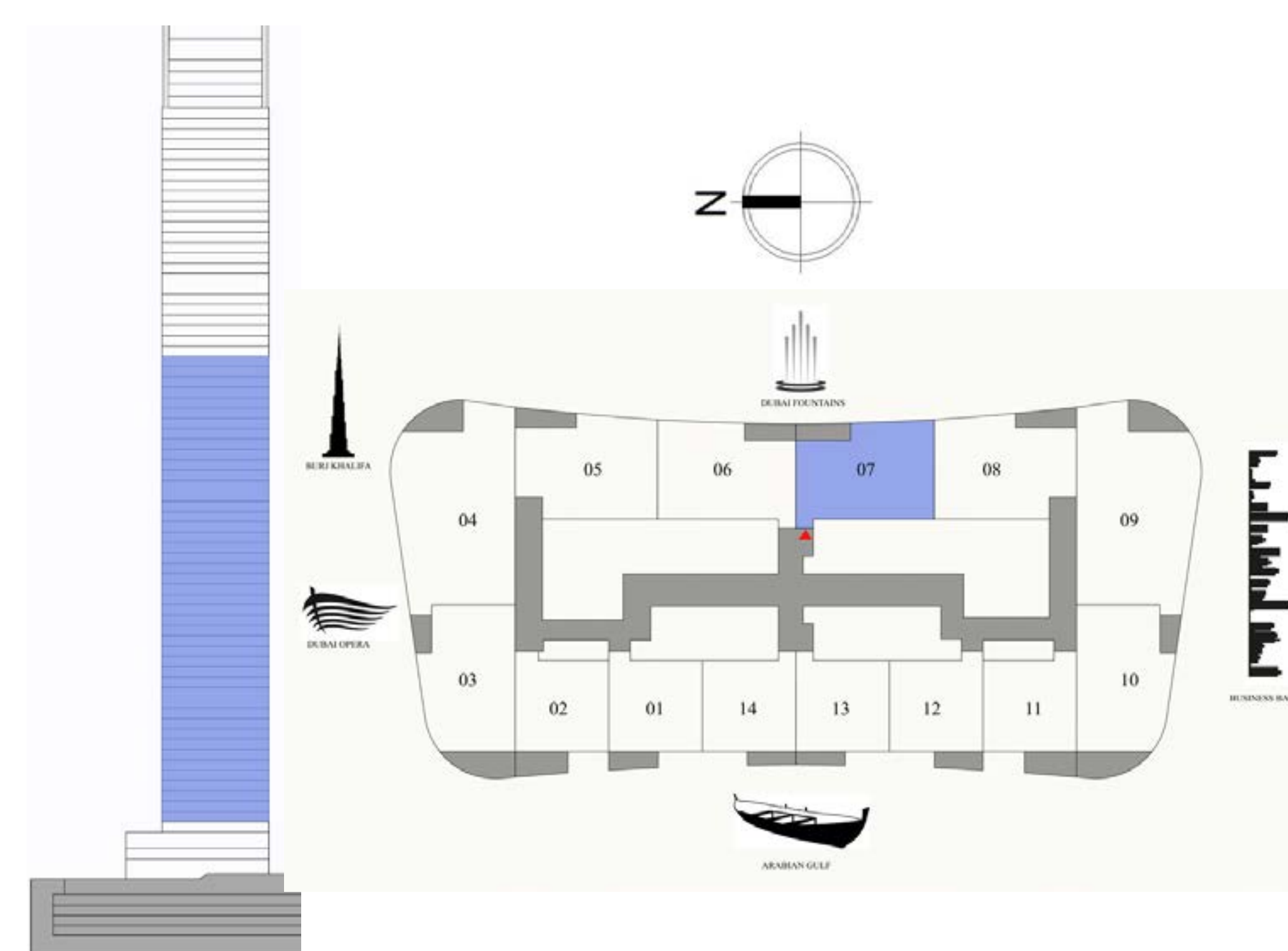
SIGNATURE RESIDENCES

LEVEL 4-52

2 BEDROOM

UNIT 7

SUITE AREA	1071.98 SQ.FT.	99.59 SQ.M.
BALCONY AREA	65.12 SQ.FT.	6.05 SQ.M.
TOTAL AREA	1137.10 SQ.FT.	105.64 SQ.M.



FLOOR PLAN 1. All dimensions are in imperial and metric, and measured from finish to finish excluding construction tolerances. 2. All materials, dimensions, and drawings are approximate only. 3. Information is subject to change without notice, at developer's absolute discretion. 4. Actual area may vary from the stated area. 5. Drawings not to scale. 6. All images used are for illustrative purposes only and do not represent the actual size, features, specifications, fittings, and furnishings. 7. The developer reserves the right to make revisions / alterations, at it's absolute discretion, without any liability whatsoever.

DOWNTOWN DUBAI

GRANDE

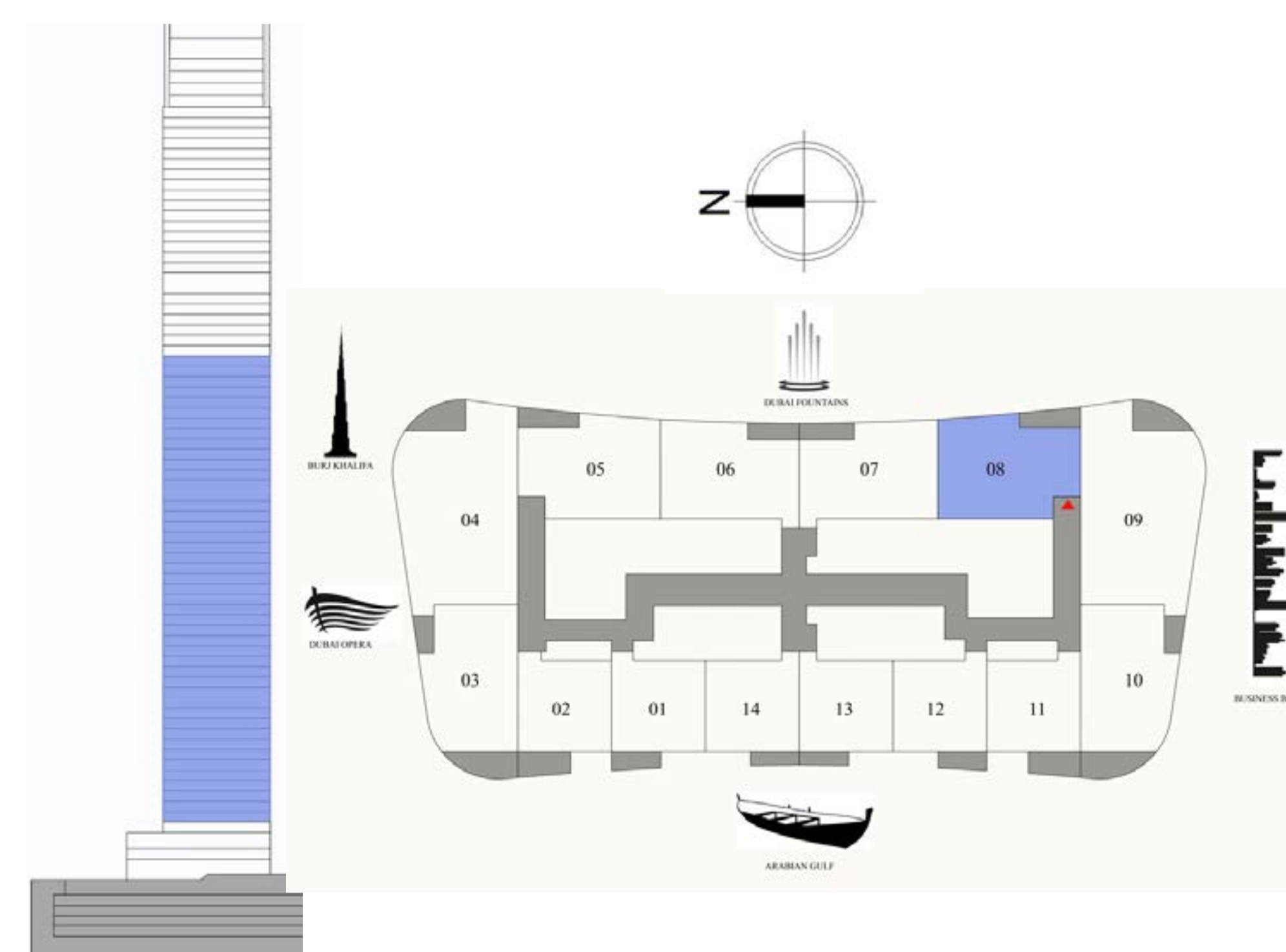
SIGNATURE RESIDENCES

LEVEL 4-52

2 BEDROOM

UNIT 8

SUITE AREA	1124.29 SQ.FT.	104.45 SQ.M.
BALCONY AREA	67.60 SQ.FT.	6.28 SQ.M.
TOTAL AREA	1191.89 SQ.FT.	110.73 SQ.M.



FLOOR PLAN 1. All dimensions are in imperial and metric, and measured from finish to finish excluding construction tolerances. 2. All materials, dimensions, and drawings are approximate only. 3. Information is subject to change without notice, at developer's absolute discretion. 4. Actual area may vary from the stated area. 5. Drawings not to scale. 6. All images used are for illustrative purposes only and do not represent the actual size, features, specifications, fittings, and furnishings. 7. The developer reserves the right to make revisions / alterations, at its absolute discretion, without any liability whatsoever.

DOWNTOWN DUBAI

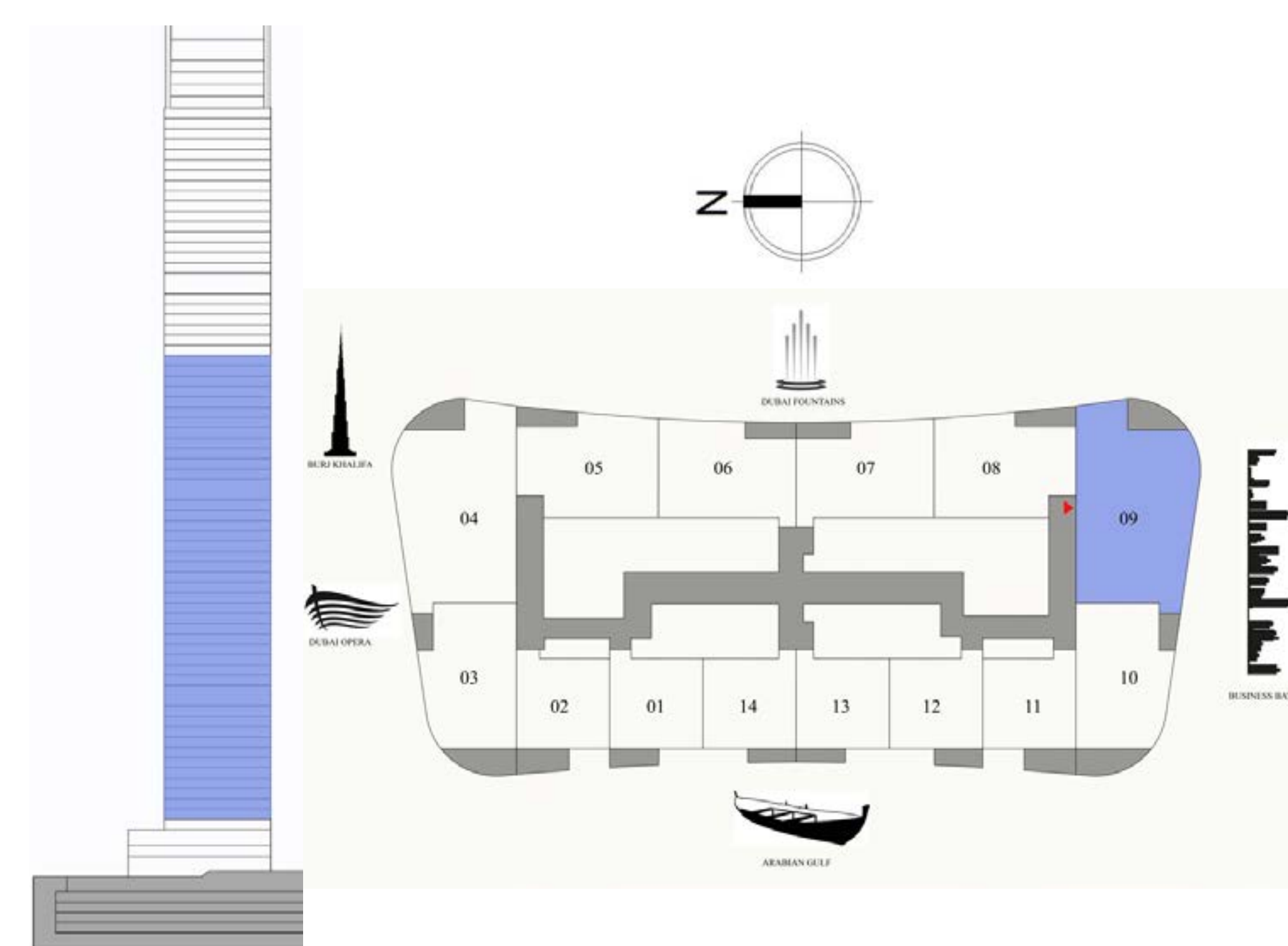
GRANDE
SIGNATURE RESIDENCES

LEVEL 4-52

3 BEDROOM

UNIT 9

SUITE AREA	1756.67 SQ.FT.	163.20 SQ.M.
BALCONY AREA	104.73 SQ.FT.	9.73 SQ.M.
TOTAL AREA	1861.40 SQ.FT.	172.93 SQ.M.



FLOOR PLAN 1. All dimensions are in imperial and metric, and measured from finish to finish excluding construction tolerances. 2. All materials, dimensions, and drawings are approximate only. 3. Information is subject to change without notice, at developer's absolute discretion. 4. Actual area may vary from the stated area. 5. Drawings not to scale. 6. All images used are for illustrative purposes only and do not represent the actual size, features, specifications, fittings, and furnishings. 7. The developer reserves the right to make revisions / alterations, at its absolute discretion, without any liability whatsoever.

DOWNTOWN DUBAI

GRANDE

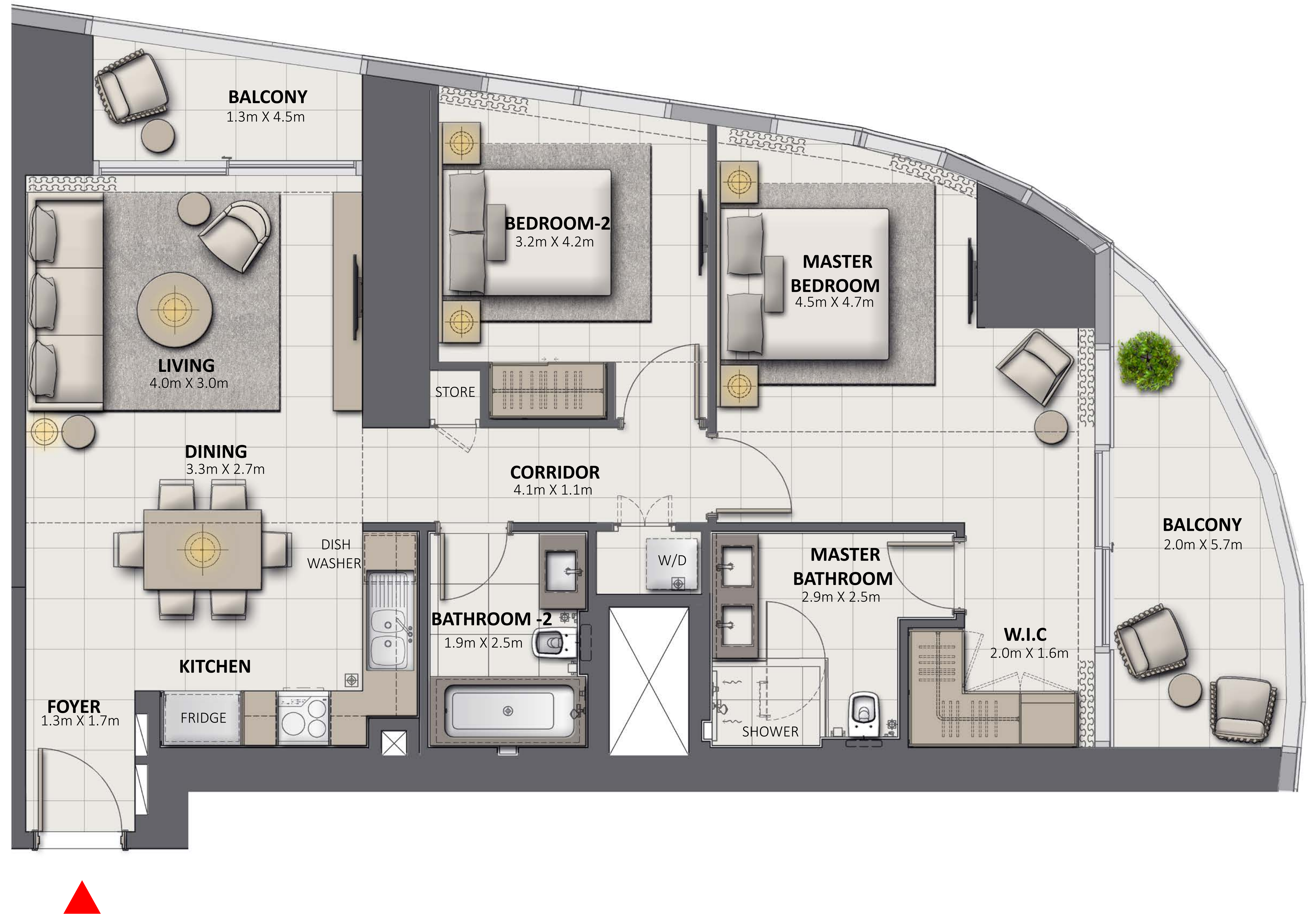
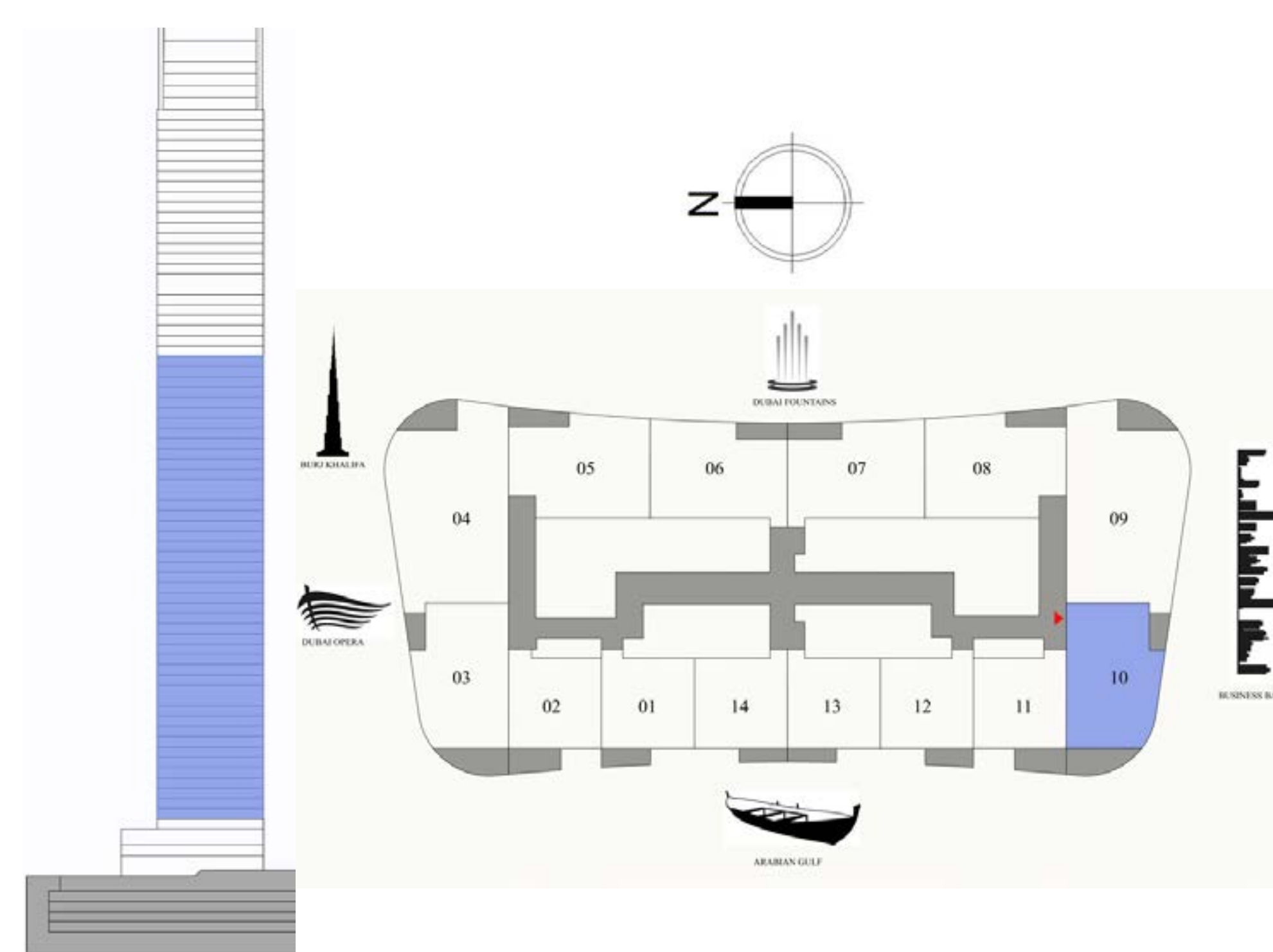
SIGNATURE RESIDENCES

LEVEL 4-52

2 BEDROOM

UNIT 10

SUITE AREA	1083.28 SQ.FT.	100.64 SQ.M.
BALCONY AREA	161.89 SQ.FT.	15.04 SQ.M.
TOTAL AREA	1245.17 SQ.FT.	115.68 SQ.M.



FLOOR PLAN 1. All dimensions are in imperial and metric, and measured from finish to finish excluding construction tolerances. 2. All materials, dimensions, and drawings are approximate only. 3. Information is subject to change without notice, at developer's absolute discretion. 4. Actual area may vary from the stated area. 5. Drawings not to scale. 6. All images used are for illustrative purposes only and do not represent the actual size, features, specifications, fittings, and furnishings. 7. The developer reserves the right to make revisions / alterations, at it's absolute discretion, without any liability whatsoever.

DOWNTOWN DUBAI

GRANDE

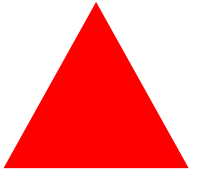
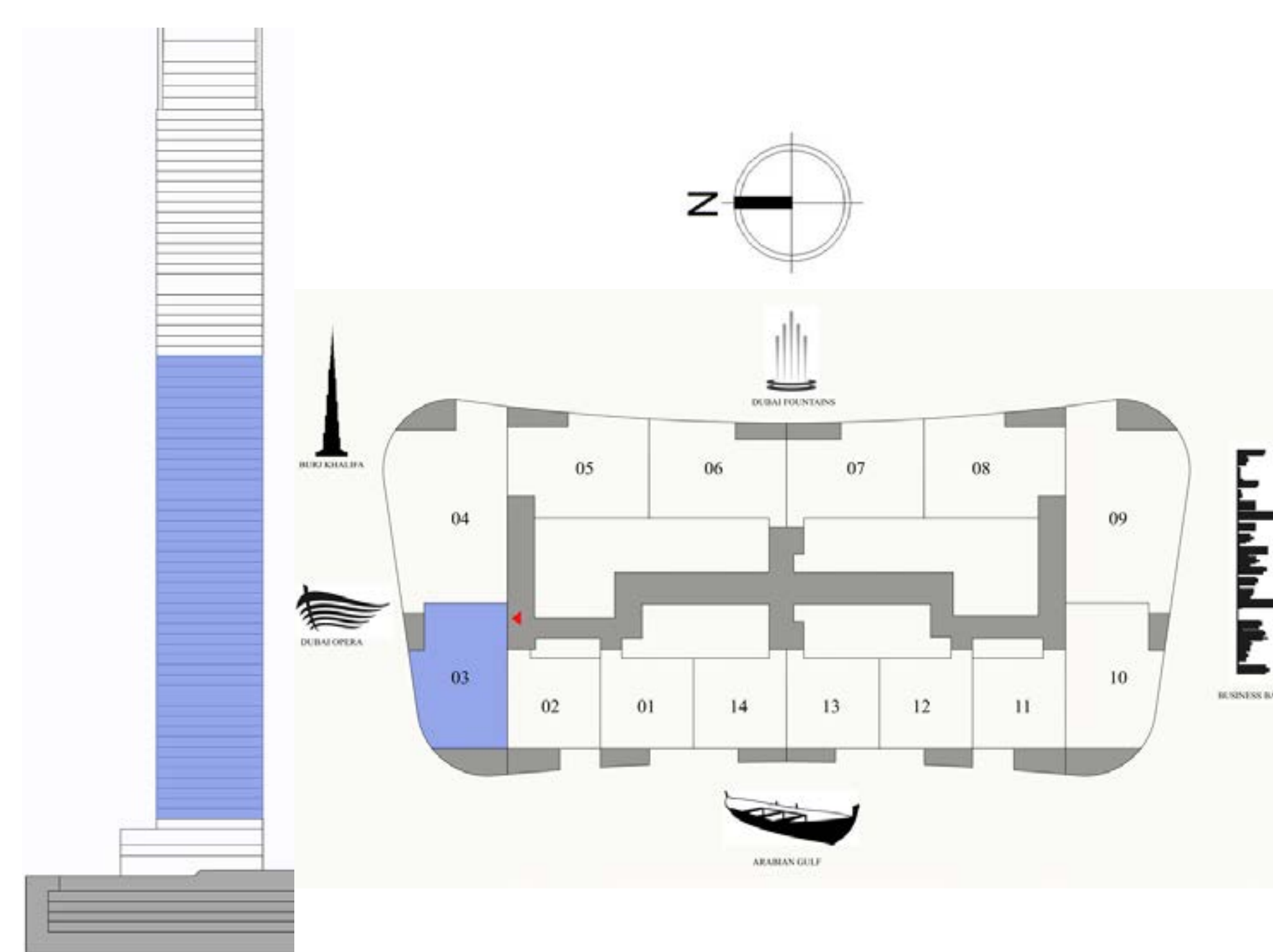
SIGNATURE RESIDENCES

LEVEL 4-52

2 BEDROOM

UNIT 3

SUITE AREA	1083.28 SQ.FT.	100.64 SQ.M.
BALCONY AREA	161.89 SQ.FT.	15.04 SQ.M.
TOTAL AREA	1245.17 SQ.FT.	115.68 SQ.M.



FLOOR PLAN 1. All dimensions are in imperial and metric, and measured from finish to finish excluding construction tolerances. 2. All materials, dimensions, and drawings are approximate only. 3. Information is subject to change without notice, at developer's absolute discretion. 4. Actual area may vary from the stated area. 5. Drawings not to scale. 6. All images used are for illustrative purposes only and do not represent the actual size, features, specifications, fittings, and furnishings. 7. The developer reserves the right to make revisions / alterations, at it's absolute discretion, without any liability whatsoever.

For more information on **GRANDE SIGNATURE RESIDENCES** in **DOWNTOWN DUBAI**,
please call 800 36227 (UAE) / +971 4 366 1688 (International)
or talk to our Property Advisor directly at +971 4888 8844 from 9 AM to 7 PM (GST), Sunday to Thursday.

Visit our online sales centre at emaar.com or any of our Sales Centres across the UAE.

DUBAI

Emaar Sales Centre | Downtown Dubai
9:30 AM to 10 PM, Saturday - Friday

Dubai Hills Estate Sales Pavilion | Umm Suqeim Road
Dubai Creek Harbour Sales Pavilion | Ras Al Khor
From 9:30 AM to 7 PM, Saturday to Thursday
From 2 PM to 7 PM, Friday

ABU DHABI

Emaar Sales Centre | Al Nahda Tower, Ground Floor, 4th Street, Corniche, Al Muroor Road
From 9:30 AM to 7 PM, Saturday to Thursday

EMAAR