

# DUBAI HILLS

## ESTATE

---

GOLF PLACE II

FLOOR PLANS

B TYPE VILLAS



# DUBAI HILLS ESTATE

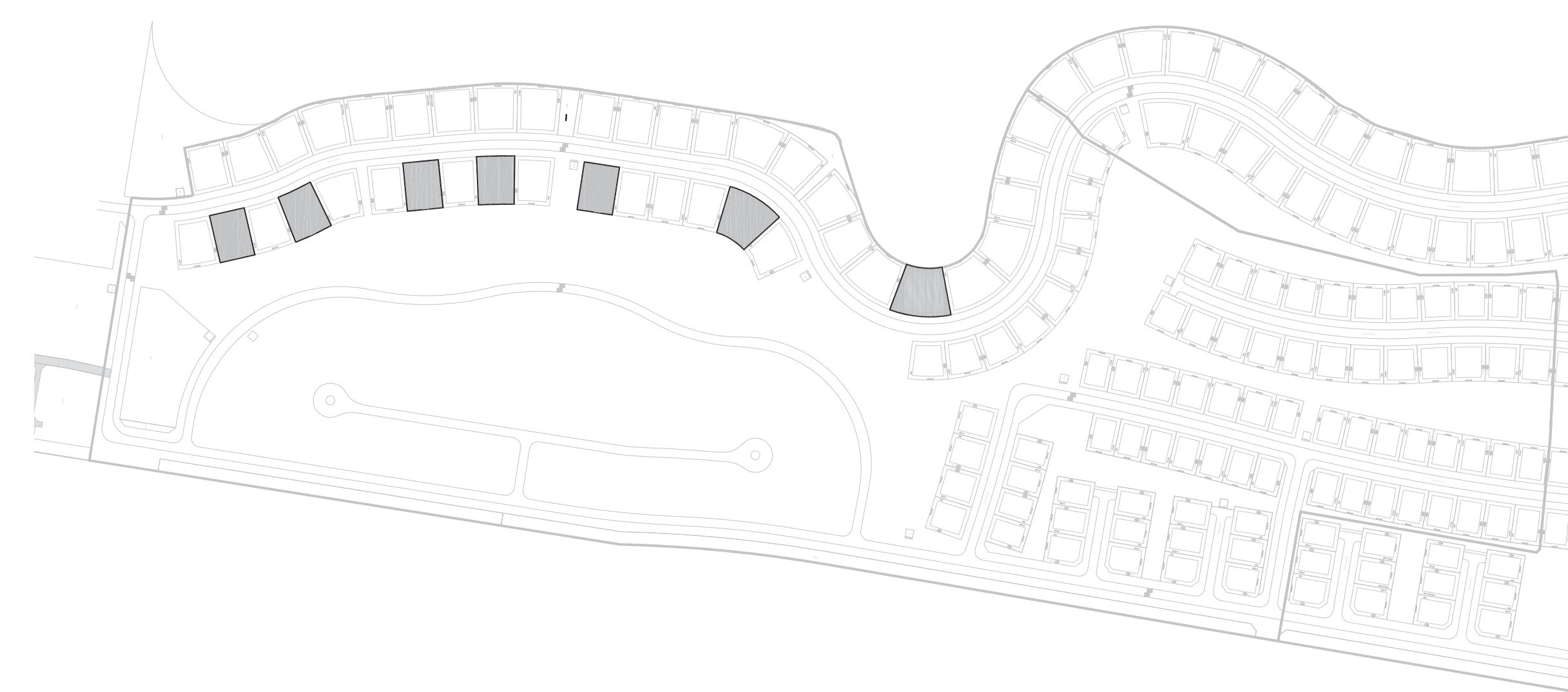
GOLF PLACE II

## 6 BEDROOM

VILLA B2 - CONTEMPORARY

SUITE AREA	7012 SQ.FT.	651.39 SQ.M.
GARAGE AREA	494 SQ.FT.	45.85 SQ.M.
ENTRY/TERRACE AREA	407 SQ.FT.	37.78 SQ.M.
BALCONY AREA	577 SQ.FT.	53.57 SQ.M.
TOTAL AREA	8488 SQ.FT.	788.59 SQ.M.

KEY PLAN



GOLF PLACE II



GROUND FLOOR



FIRST FLOOR

FLOOR PLAN 1. All dimensions are in imperial and metric, and measured from finish to finish excluding construction tolerances. 2. All materials, dimensions, and drawings are approximate only. 3. Information is subject to change without notice, at developer's absolute discretion. 4. Actual area may vary from the stated area. 5. Drawings not to scale. 6. All images used are for illustrative purposes only and do not represent the actual size, features, specifications, fittings, and furnishings. 7. The floor plan layout of the Property may be as shown above or its mirror replicate depending amongst others on the master plan layout and the location of the property within the master plan. 8. The developer reserves the right to make revisions / alterations, at it's absolute discretion, without any liability whatsoever.



# DUBAI HILLS ESTATE

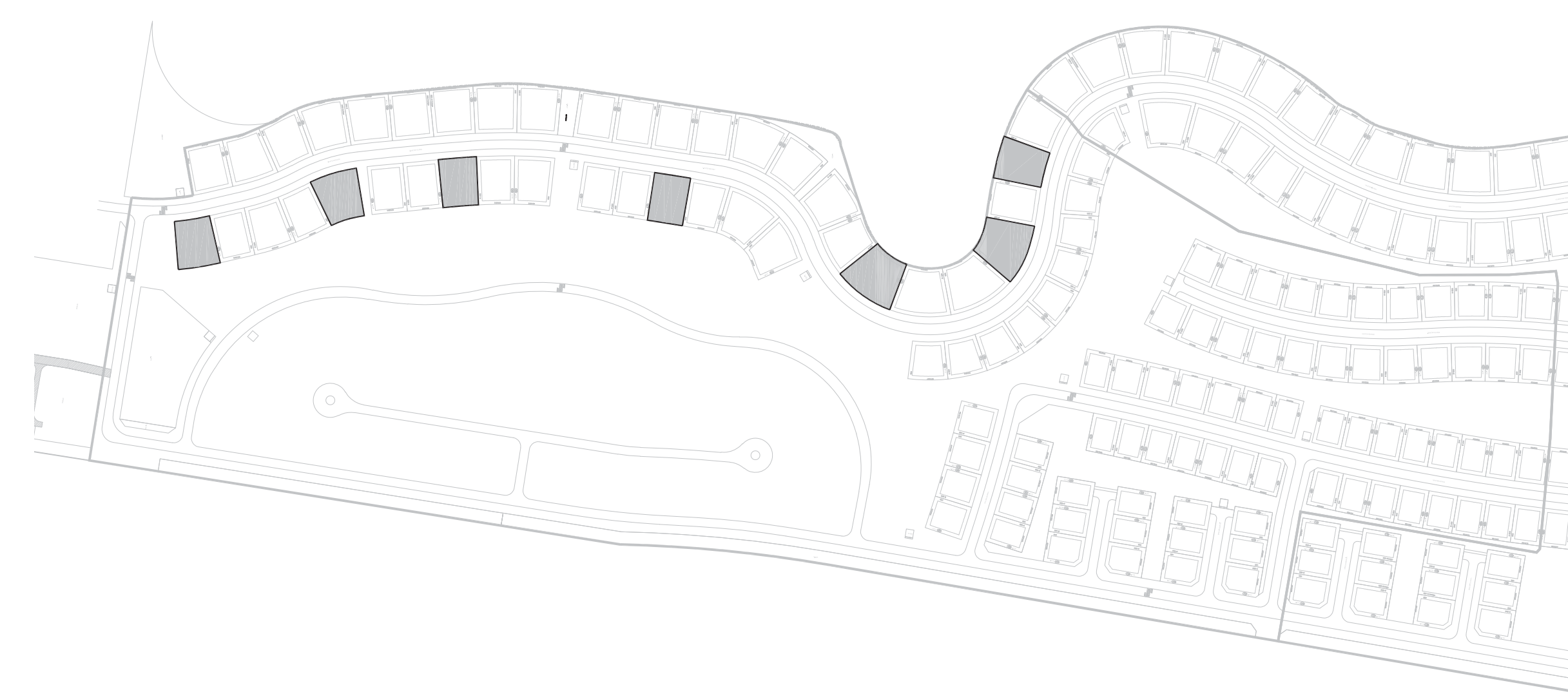
GOLF PLACE II

## 6 BEDROOM

VILLA B2 - ELEGANT

SUITE AREA	7033 SQ.FT.	653.36 SQ.M.
GARAGE AREA	461 SQ.FT.	42.80 SQ.M.
ENTRY/TERRACE AREA	594 SQ.FT.	55.20 SQ.M.
BALCONY AREA	737 SQ.FT.	68.44 SQ.M.
TOTAL AREA	8824 SQ.FT.	819.80 SQ.M.

KEY PLAN



GOLF PLACE II



GROUND FLOOR



FIRST FLOOR

FLOOR PLAN 1. All dimensions are in imperial and metric, and measured from finish to finish excluding construction tolerances. 2. All materials, dimensions, and drawings are approximate only. 3. Information is subject to change without notice, at developer's absolute discretion. 4. Actual area may vary from the stated area. 5. Drawings not to scale. 6. All images used are for illustrative purposes only and do not represent the actual size, features, specifications, fittings, and furnishings. 7. The floor plan layout of the Property may be as shown above or its mirror replicate depending amongst others on the master plan layout and the location of the property within the master plan. 8. The developer reserves the right to make revisions / alterations, at it's absolute discretion, without any liability whatsoever.



# DUBAI HILLS ESTATE

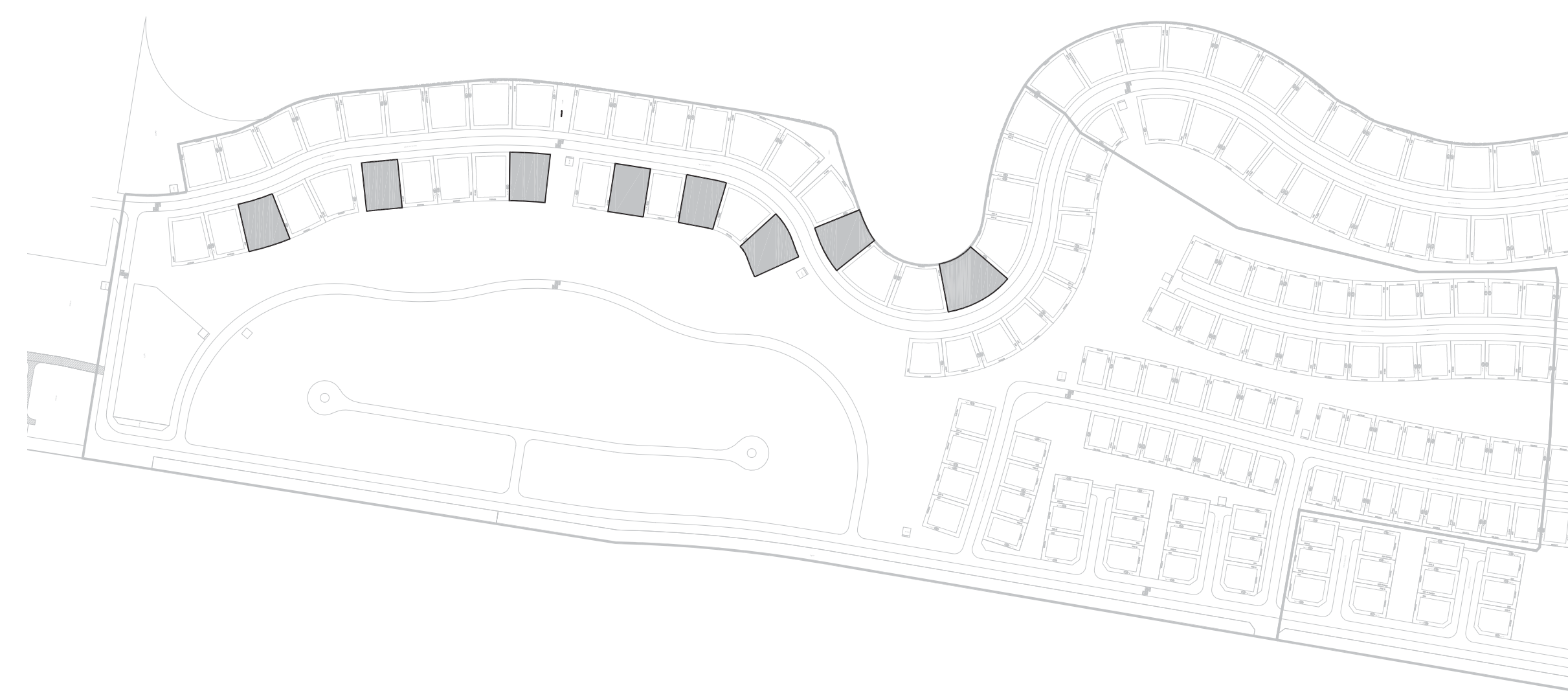
GOLF PLACE II

## 6 BEDROOM

VILLA B2 - MODERN

SUITE AREA	7124 SQ.FT.	661.88 SQ.M.
GARAGE AREA	499 SQ.FT.	46.32 SQ.M.
ENTRY/TERRACE AREA	521 SQ.FT.	48.36 SQ.M.
BALCONY AREA	674 SQ.FT.	62.66 SQ.M.
TOTAL AREA	8818 SQ.FT.	819.22 SQ.M.

KEY PLAN



GOLF PLACE II



GROUND FLOOR



FIRST FLOOR

FLOOR PLAN 1. All dimensions are in imperial and metric, and measured from finish to finish excluding construction tolerances. 2. All materials, dimensions, and drawings are approximate only. 3. Information is subject to change without notice, at developer's absolute discretion. 4. Actual area may vary from the stated area. 5. Drawings not to scale. 6. All images used are for illustrative purposes only and do not represent the actual size, features, specifications, fittings, and furnishings. 7. The floor plan layout of the Property may be as shown above or its mirror replicate depending amongst others on the master plan layout and the location of the property within the master plan. 8. The developer reserves the right to make revisions / alterations, at it's absolute discretion, without any liability whatsoever.



# DUBAI HILLS ESTATE

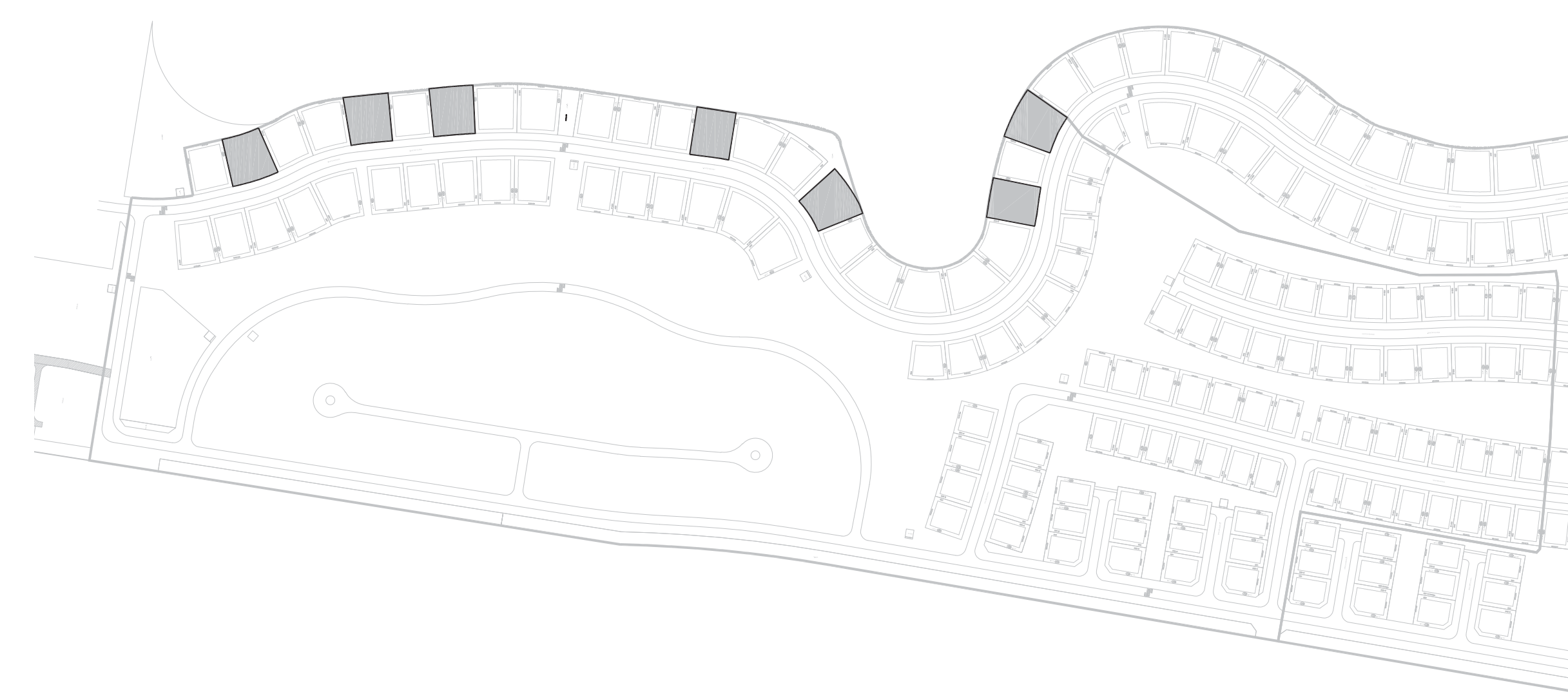
GOLF PLACE II

## 6 BEDROOM

VILLA B3 - CONTEMPORARY

SUITE AREA	8187 SQ.FT.	760.59 SQ.M.
GARAGE AREA	472 SQ.FT.	43.83 SQ.M.
ENTRY/TERRACE AREA	725 SQ.FT.	67.34 SQ.M.
BALCONY AREA	607 SQ.FT.	56.42 SQ.M.
TOTAL AREA	9991 SQ.FT.	928.18 SQ.M.

KEY PLAN



GOLF PLACE II



GROUND FLOOR



FIRST FLOOR

FLOOR PLAN 1. All dimensions are in imperial and metric, and measured from finish to finish excluding construction tolerances. 2. All materials, dimensions, and drawings are approximate only. 3. Information is subject to change without notice, at developer's absolute discretion. 4. Actual area may vary from the stated area. 5. Drawings not to scale. 6. All images used are for illustrative purposes only and do not represent the actual size, features, specifications, fittings, and furnishings. 7. The floor plan layout of the Property may be as shown above or its mirror replicate depending amongst others on the master plan layout and the location of the property within the master plan. 8. The developer reserves the right to make revisions / alterations, at it's absolute discretion, without any liability whatsoever.



# DUBAI HILLS ESTATE

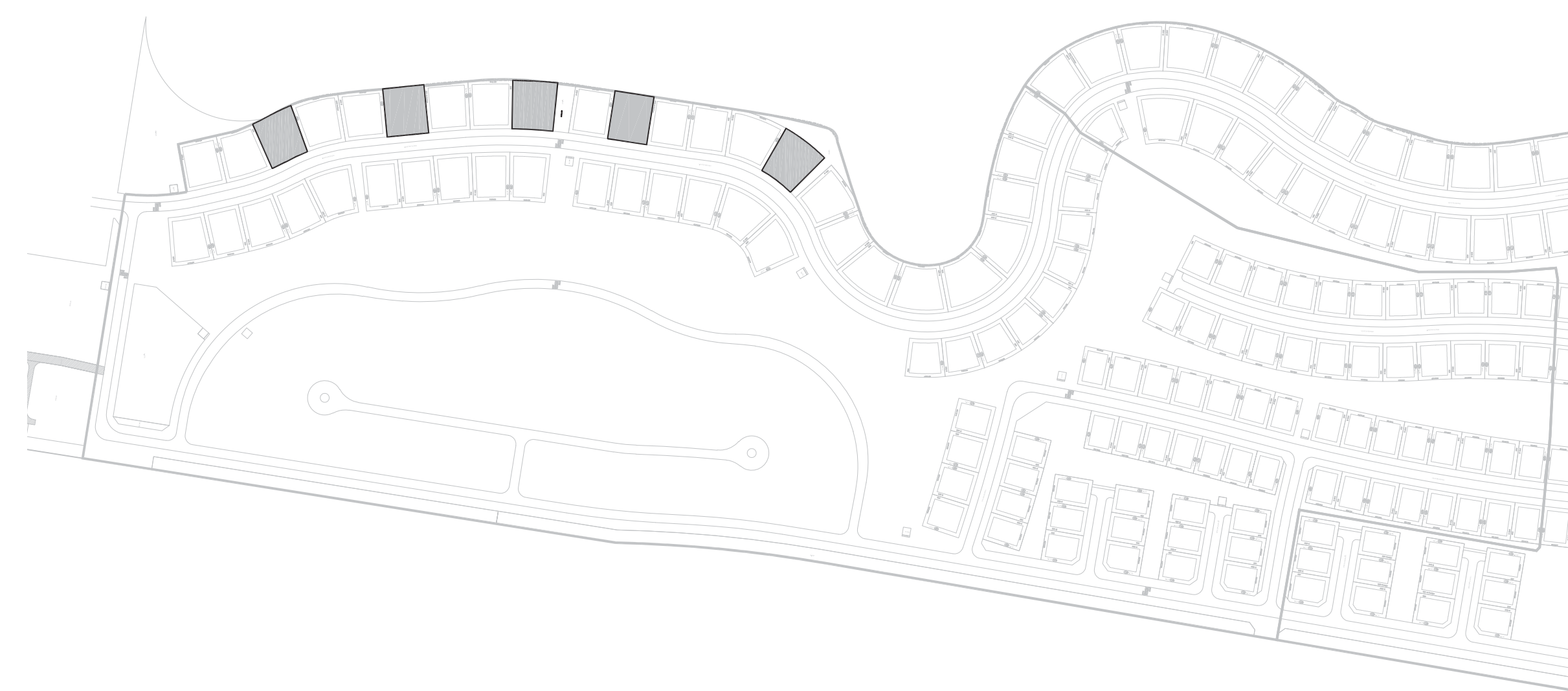
GOLF PLACE II

## 6 BEDROOM

VILLA B3 - ELEGANT

SUITE AREA	8136 SQ.FT.	755.89 SQ.M.
GARAGE AREA	467 SQ.FT.	43.37 SQ.M.
ENTRY/TERRACE AREA	420 SQ.FT.	39.03 SQ.M.
BALCONY AREA	326 SQ.FT.	30.31 SQ.M.
TOTAL AREA	9350 SQ.FT.	868.60 SQ.M.

KEY PLAN



GOLF PLACE II



GROUND FLOOR



FIRST FLOOR

FLOOR PLAN 1. All dimensions are in imperial and metric, and measured from finish to finish excluding construction tolerances. 2. All materials, dimensions, and drawings are approximate only. 3. Information is subject to change without notice, at developer's absolute discretion. 4. Actual area may vary from the stated area. 5. Drawings not to scale. 6. All images used are for illustrative purposes only and do not represent the actual size, features, specifications, fittings, and furnishings. 7. The floor plan layout of the Property may be as shown above or its mirror replicate depending amongst others on the master plan layout and the location of the property within the master plan. 8. The developer reserves the right to make revisions / alterations, at it's absolute discretion, without any liability whatsoever.



# DUBAI HILLS ESTATE

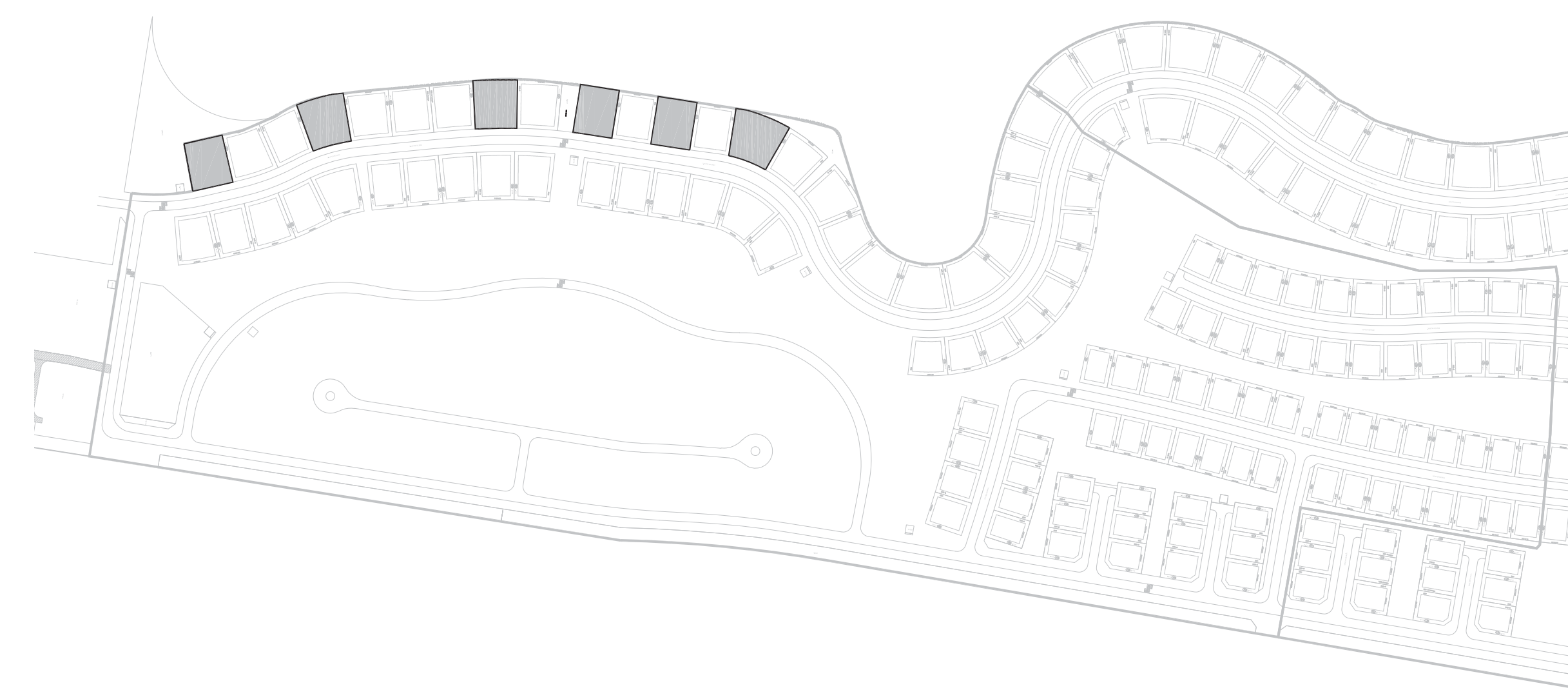
GOLF PLACE II

## 6 BEDROOM

VILLA B3 - MODERN

SUITE AREA	8232 SQ.FT.	764.81 SQ.M.
GARAGE AREA	483 SQ.FT.	44.86 SQ.M.
ENTRY/TERRACE AREA	404 SQ.FT.	37.50 SQ.M.
BALCONY AREA	327 SQ.FT.	30.35 SQ.M.
TOTAL AREA	9446 SQ.FT.	877.52 SQ.M.

KEY PLAN



GOLF PLACE II



GROUND FLOOR



FIRST FLOOR

FLOOR PLAN 1. All dimensions are in imperial and metric, and measured from finish to finish excluding construction tolerances. 2. All materials, dimensions, and drawings are approximate only. 3. Information is subject to change without notice, at developer's absolute discretion. 4. Actual area may vary from the stated area. 5. Drawings not to scale. 6. All images used are for illustrative purposes only and do not represent the actual size, features, specifications, fittings, and furnishings. 7. The floor plan layout of the Property may be as shown above or its mirror replicate depending amongst others on the master plan layout and the location of the property within the master plan. 8. The developer reserves the right to make revisions / alterations, at it's absolute discretion, without any liability whatsoever.



# DUBAI HILLS

## ESTATE

---

GOLF PLACE II

FLOOR PLANS

D TYPE VILLAS



# DUBAI HILLS ESTATE

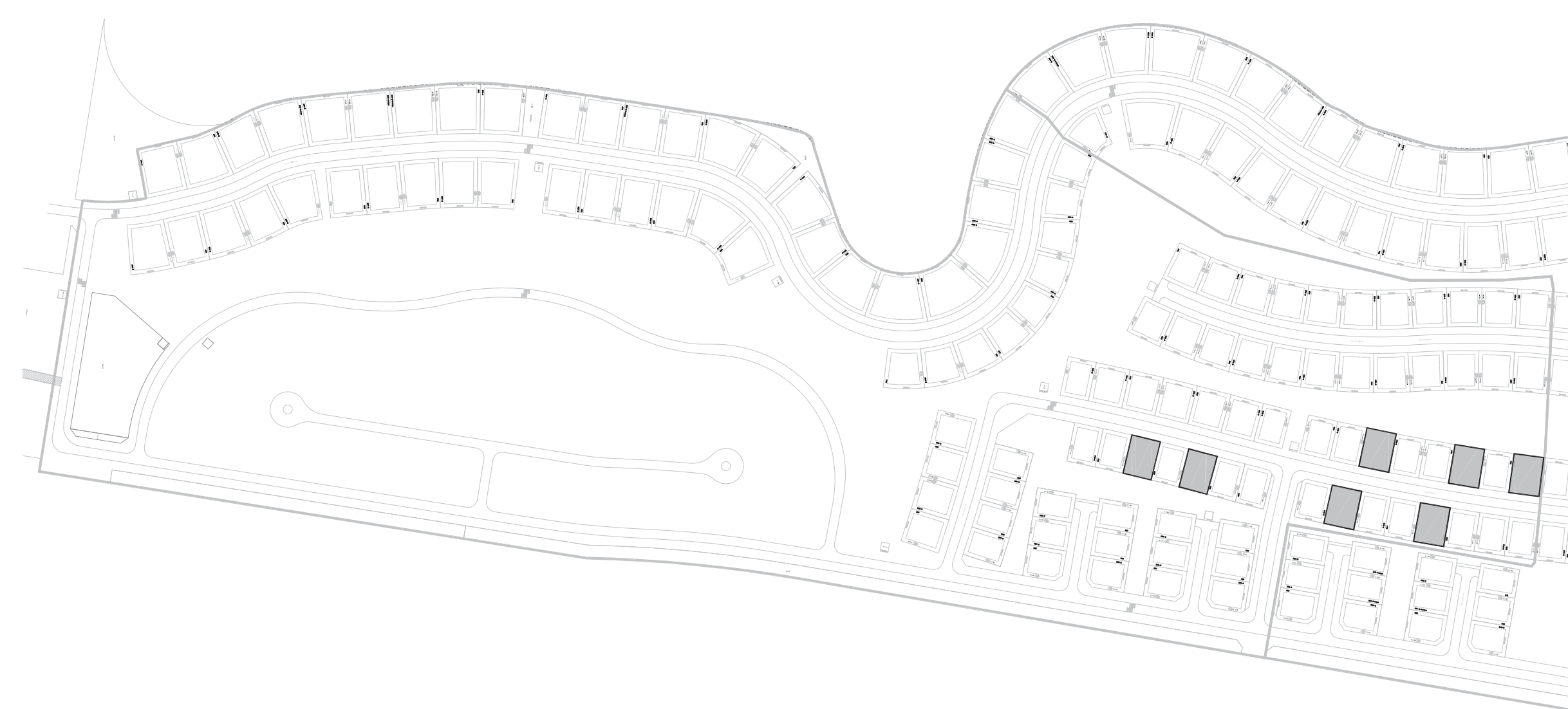
GOLF PLACE II

## 4 BEDROOM

VILLA D1 - CONTEMPORARY

SUITE AREA	4287 SQ.FT.	398.24 SQ.M.
GARAGE AREA	431 SQ.FT.	40.00 SQ.M.
ENTRY/TERRACE AREA	307 SQ.FT.	28.51 SQ.M.
BALCONY AREA	406 SQ.FT.	37.76 SQ.M.
TOTAL AREA	5431 SQ.FT.	504.51 SQ.M.

KEY PLAN



GOLF PLACE II



GROUND FLOOR



FIRST FLOOR

FLOOR PLAN 1. All dimensions are in imperial and metric, and measured from finish to finish excluding construction tolerances. 2. All materials, dimensions, and drawings are approximate only. 3. Information is subject to change without notice, at developer's absolute discretion. 4. Actual area may vary from the stated area. 5. Drawings not to scale. 6. All images used are for illustrative purposes only and do not represent the actual size, features, specifications, fittings, and furnishings. 7. The floor plan layout of the Property may be as shown above or its mirror replicate depending amongst others on the master plan layout and the location of the property within the master plan. 8. The developer reserves the right to make revisions / alterations, at it's absolute discretion, without any liability whatsoever.



# DUBAI HILLS ESTATE

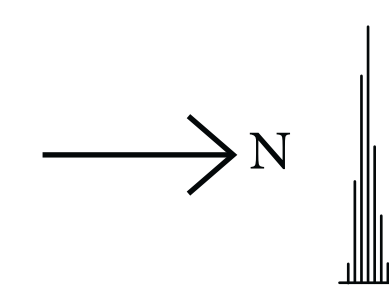
GOLF PLACE II

## 4 BEDROOM

VILLA D1 - ELEGANT

SUITE AREA	4272 SQ.FT.	396.86 SQ.M.
GARAGE AREA	429 SQ.FT.	39.86 SQ.M.
ENTRY/TERRACE AREA	289 SQ.FT.	26.84 SQ.M.
BALCONY AREA	409 SQ.FT.	37.96 SQ.M.
TOTAL AREA	5398 SQ.FT.	501.52 SQ.M.

KEY PLAN



GOLF PLACE II



GROUND FLOOR



FIRST FLOOR

FLOOR PLAN 1. All dimensions are in imperial and metric, and measured from finish to finish excluding construction tolerances. 2. All materials, dimensions, and drawings are approximate only. 3. Information is subject to change without notice, at developer's absolute discretion. 4. Actual area may vary from the stated area. 5. Drawings not to scale. 6. All images used are for illustrative purposes only and do not represent the actual size, features, specifications, fittings, and furnishings. 7. The floor plan layout of the Property may be as shown above or its mirror replicate depending amongst others on the master plan layout and the location of the property within the master plan. 8. The developer reserves the right to make revisions / alterations, at it's absolute discretion, without any liability whatsoever.



# DUBAI HILLS ESTATE

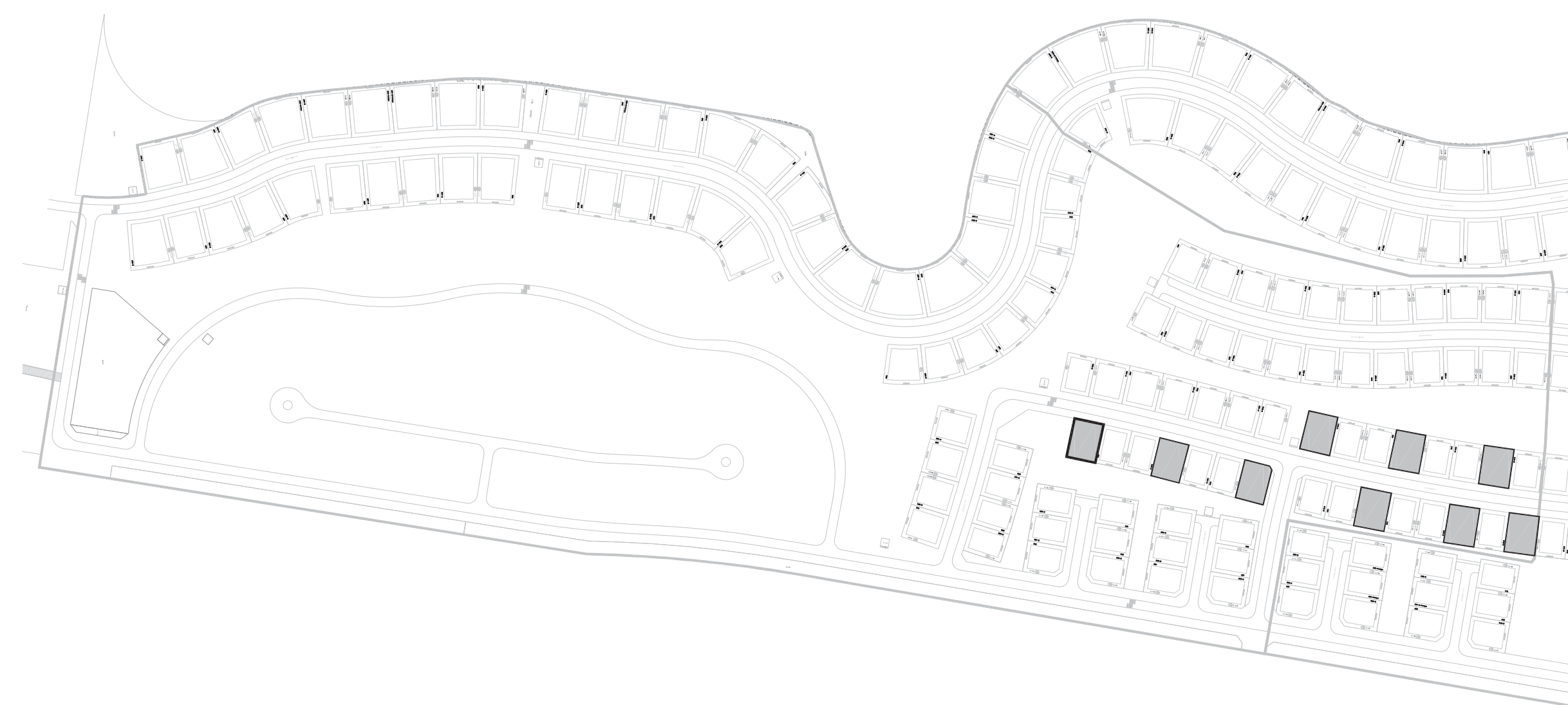
GOLF PLACE II

## 4 BEDROOM

VILLA D1 - MODERN

SUITE AREA	4292 SQ.FT.	398.74 SQ.M.
GARAGE AREA	411 SQ.FT.	38.20 SQ.M.
ENTRY/TERRACE AREA	272 SQ.FT.	25.30 SQ.M.
BALCONY AREA	151 SQ.FT.	14.02 SQ.M.
TOTAL AREA	5126 SQ.FT.	476.26 SQ.M.

KEY PLAN



GOLF PLACE II



GROUND FLOOR



FIRST FLOOR

FLOOR PLAN 1. All dimensions are in imperial and metric, and measured from finish to finish excluding construction tolerances. 2. All materials, dimensions, and drawings are approximate only. 3. Information is subject to change without notice, at developer's absolute discretion. 4. Actual area may vary from the stated area. 5. Drawings not to scale. 6. All images used are for illustrative purposes only and do not represent the actual size, features, specifications, fittings, and furnishings. 7. The floor plan layout of the Property may be as shown above or its mirror replicate depending amongst others on the master plan layout and the location of the property within the master plan. 8. The developer reserves the right to make revisions / alterations, at it's absolute discretion, without any liability whatsoever.



# DUBAI HILLS ESTATE

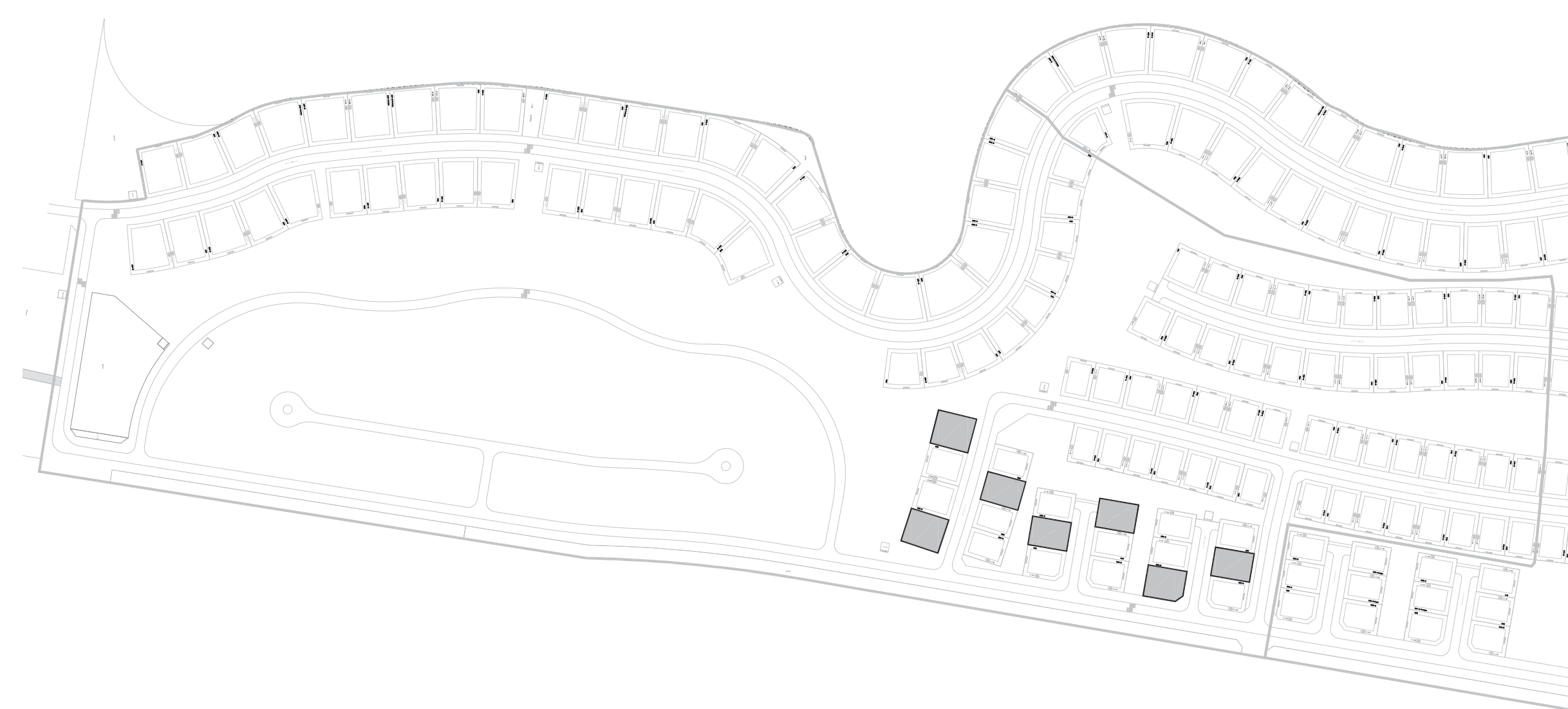
GOLF PLACE II

## 5 BEDROOM

VILLA D2 - CONTEMPORARY

SUITE AREA	4941 SQ.FT.	459.05 SQ.M.
GARAGE AREA	392 SQ.FT.	36.44 SQ.M.
ENTRY/TERRACE AREA	171 SQ.FT.	15.93 SQ.M.
BALCONY AREA	240 SQ.FT.	22.32 SQ.M.
TOTAL AREA	5745 SQ.FT.	533.74 SQ.M.

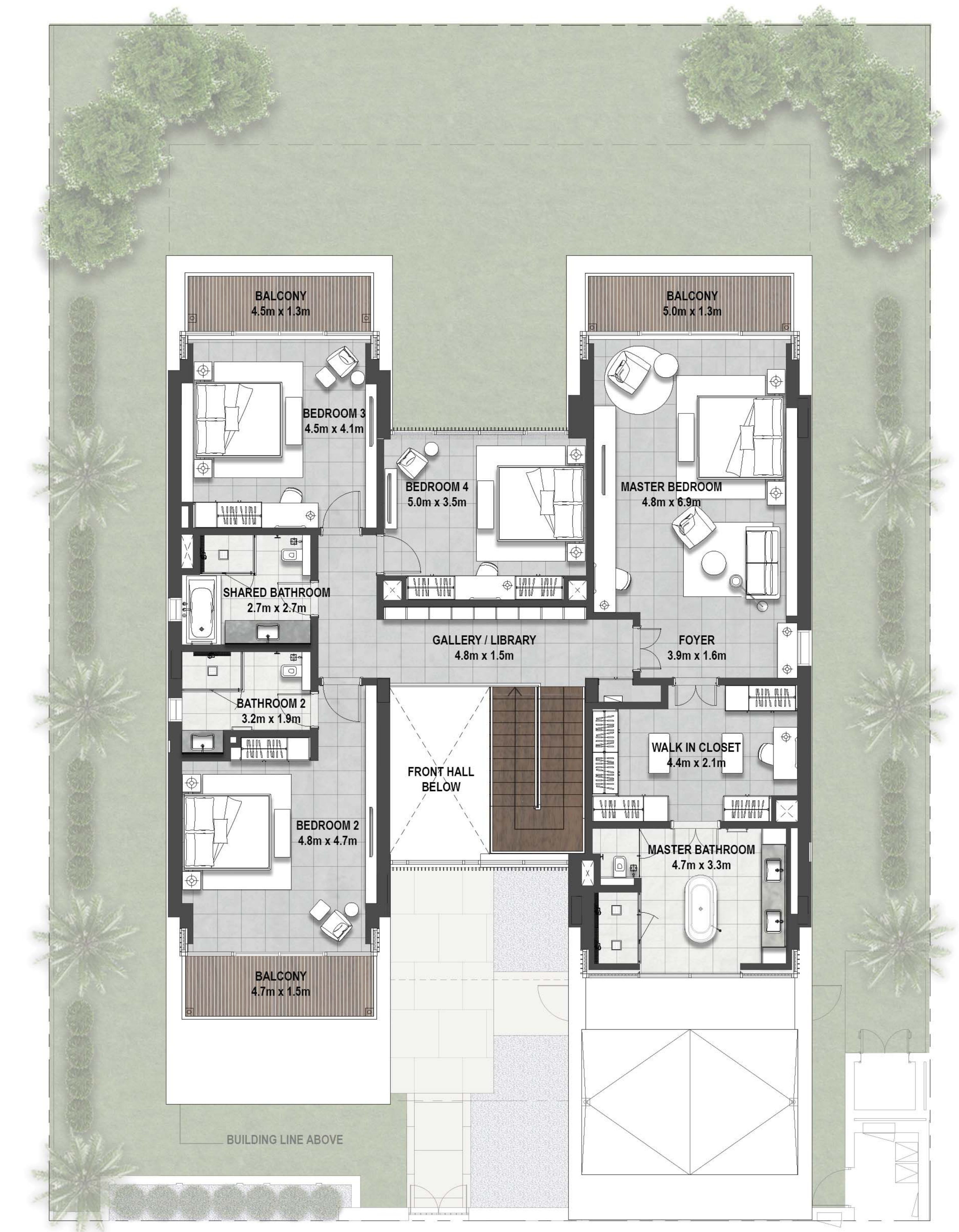
KEY PLAN



GOLF PLACE II



GROUND FLOOR



FIRST FLOOR

FLOOR PLAN 1. All dimensions are in imperial and metric, and measured from finish to finish excluding construction tolerances. 2. All materials, dimensions, and drawings are approximate only. 3. Information is subject to change without notice, at developer's absolute discretion. 4. Actual area may vary from the stated area. 5. Drawings not to scale. 6. All images used are for illustrative purposes only and do not represent the actual size, features, specifications, fittings, and furnishings. 7. The floor plan layout of the Property may be as shown above or its mirror replicate depending amongst others on the master plan layout and the location of the property within the master plan. 8. The developer reserves the right to make revisions / alterations, at it's absolute discretion, without any liability whatsoever.



# DUBAI HILLS ESTATE

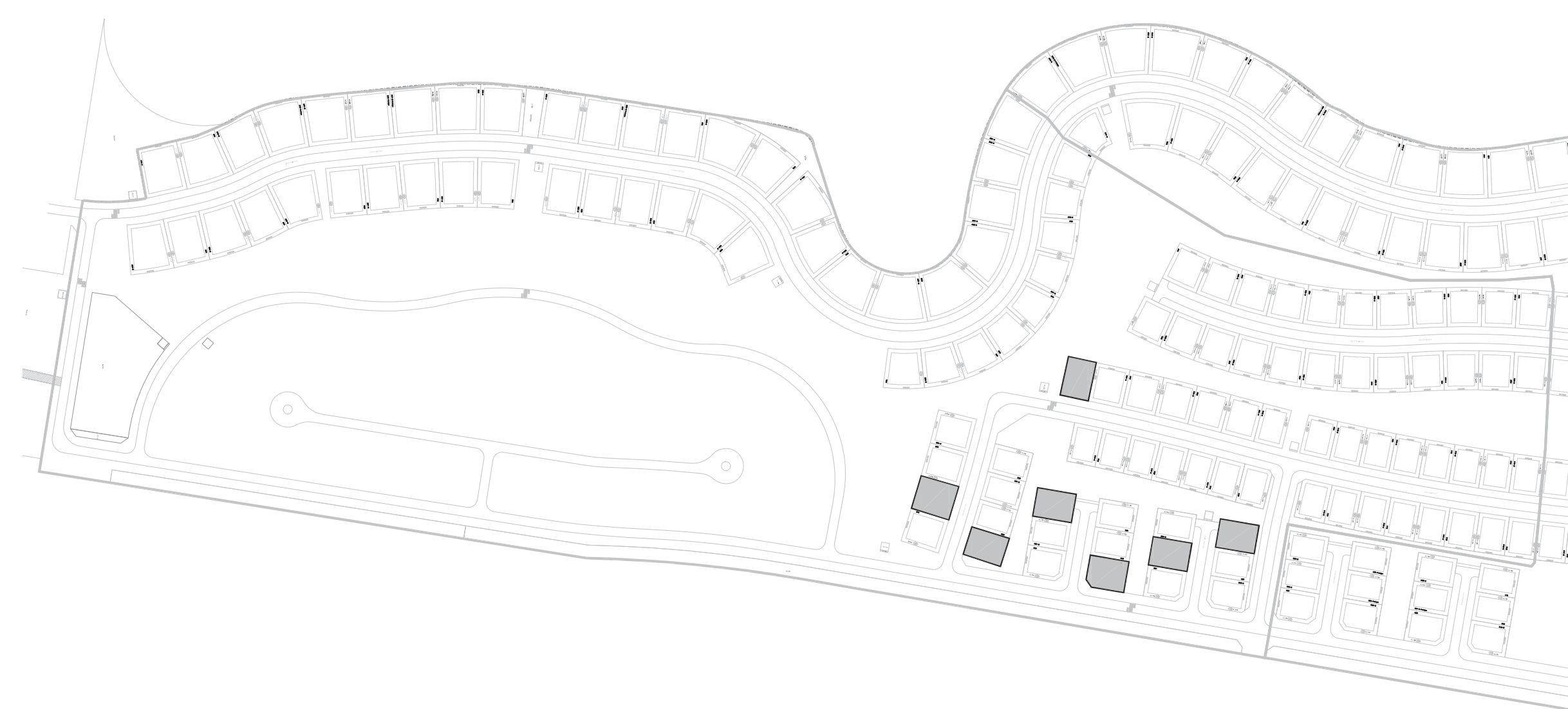
GOLF PLACE II

## 5 BEDROOM

VILLA D2 - ELEGANT

SUITE AREA	4964 SQ.FT.	461.17 SQ.M.
GARAGE AREA	397 SQ.FT.	36.87 SQ.M.
ENTRY/TERRACE AREA	156 SQ.FT.	14.50 SQ.M.
BALCONY AREA	240 SQ.FT.	22.32 SQ.M.
TOTAL AREA	5757 SQ.FT.	534.86 SQ.M.

KEY PLAN



GOLF PLACE II



GROUND FLOOR



FIRST FLOOR

FLOOR PLAN 1. All dimensions are in imperial and metric, and measured from finish to finish excluding construction tolerances. 2. All materials, dimensions, and drawings are approximate only. 3. Information is subject to change without notice, at developer's absolute discretion. 4. Actual area may vary from the stated area. 5. Drawings not to scale. 6. All images used are for illustrative purposes only and do not represent the actual size, features, specifications, fittings, and furnishings. 7. The floor plan layout of the Property may be as shown above or its mirror replicate depending amongst others on the master plan layout and the location of the property within the master plan. 8. The developer reserves the right to make revisions / alterations, at it's absolute discretion, without any liability whatsoever.



# DUBAI HILLS ESTATE

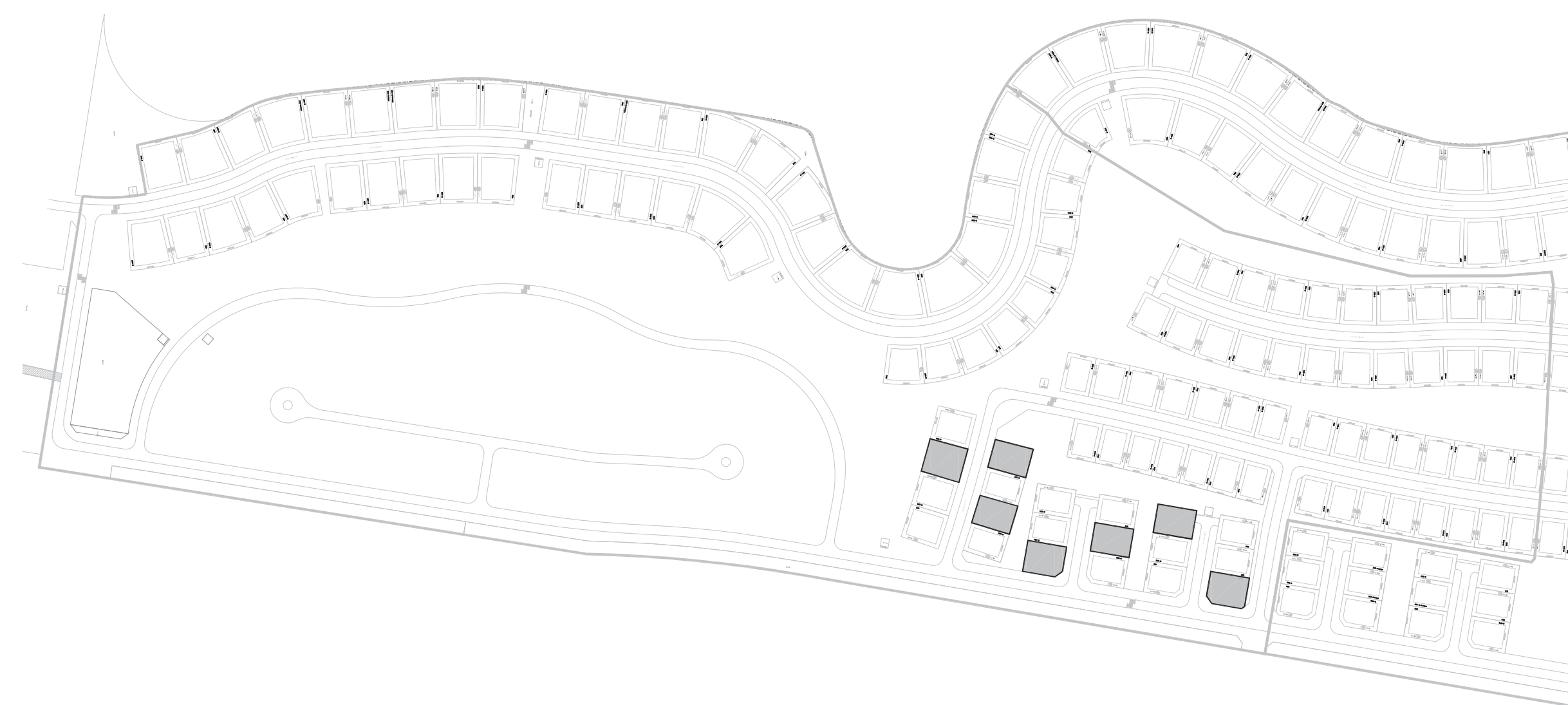
GOLF PLACE II

## 5 BEDROOM

VILLA D2 - MODERN

SUITE AREA	4931 SQ.FT.	458.10 SQ.M.
GARAGE AREA	399 SQ.FT.	37.03 SQ.M.
ENTRY/TERRACE AREA	156 SQ.FT.	14.45 SQ.M.
BALCONY AREA	149 SQ.FT.	13.88 SQ.M.
TOTAL AREA	5634 SQ.FT.	523.46 SQ.M.

KEY PLAN



GOLF PLACE II



GROUND FLOOR



FIRST FLOOR

FLOOR PLAN 1. All dimensions are in imperial and metric, and measured from finish to finish excluding construction tolerances. 2. All materials, dimensions, and drawings are approximate only. 3. Information is subject to change without notice, at developer's absolute discretion. 4. Actual area may vary from the stated area. 5. Drawings not to scale. 6. All images used are for illustrative purposes only and do not represent the actual size, features, specifications, fittings, and furnishings. 7. The floor plan layout of the Property may be as shown above or its mirror replicate depending amongst others on the master plan layout and the location of the property within the master plan. 8. The developer reserves the right to make revisions / alterations, at it's absolute discretion, without any liability whatsoever.



# DUBAI HILLS ESTATE

GOLF PLACE II

## 5 BEDROOM

VILLA D3 - CONTEMPORARY

SUITE AREA	5967 SQ.FT.	554.31 SQ.M.
GARAGE AREA	454 SQ.FT.	42.20 SQ.M.
ENTRY/TERRACE AREA	191 SQ.FT.	17.74 SQ.M.
BALCONY AREA	464 SQ.FT.	43.09 SQ.M.
TOTAL AREA	7076 SQ.FT.	657.34 SQ.M.

KEY PLAN



GOLF PLACE II



GROUND FLOOR



FIRST FLOOR

FLOOR PLAN 1. All dimensions are in imperial and metric, and measured from finish to finish excluding construction tolerances. 2. All materials, dimensions, and drawings are approximate only. 3. Information is subject to change without notice, at developer's absolute discretion. 4. Actual area may vary from the stated area. 5. Drawings not to scale. 6. All images used are for illustrative purposes only and do not represent the actual size, features, specifications, fittings, and furnishings. 7. The floor plan layout of the Property may be as shown above or its mirror replicate depending amongst others on the master plan layout and the location of the property within the master plan. 8. The developer reserves the right to make revisions / alterations, at it's absolute discretion, without any liability whatsoever.



# DUBAI HILLS ESTATE

GOLF PLACE II

## 5 BEDROOM

VILLA D3 - ELEGANT

SUITE AREA	5968 SQ.FT.	554.42 SQ.M.
GARAGE AREA	469 SQ.FT.	43.57 SQ.M.
ENTRY/TERRACE AREA	190 SQ.FT.	17.66 SQ.M.
BALCONY AREA	497 SQ.FT.	46.21 SQ.M.
TOTAL AREA	7124 SQ.FT.	661.86 SQ.M.

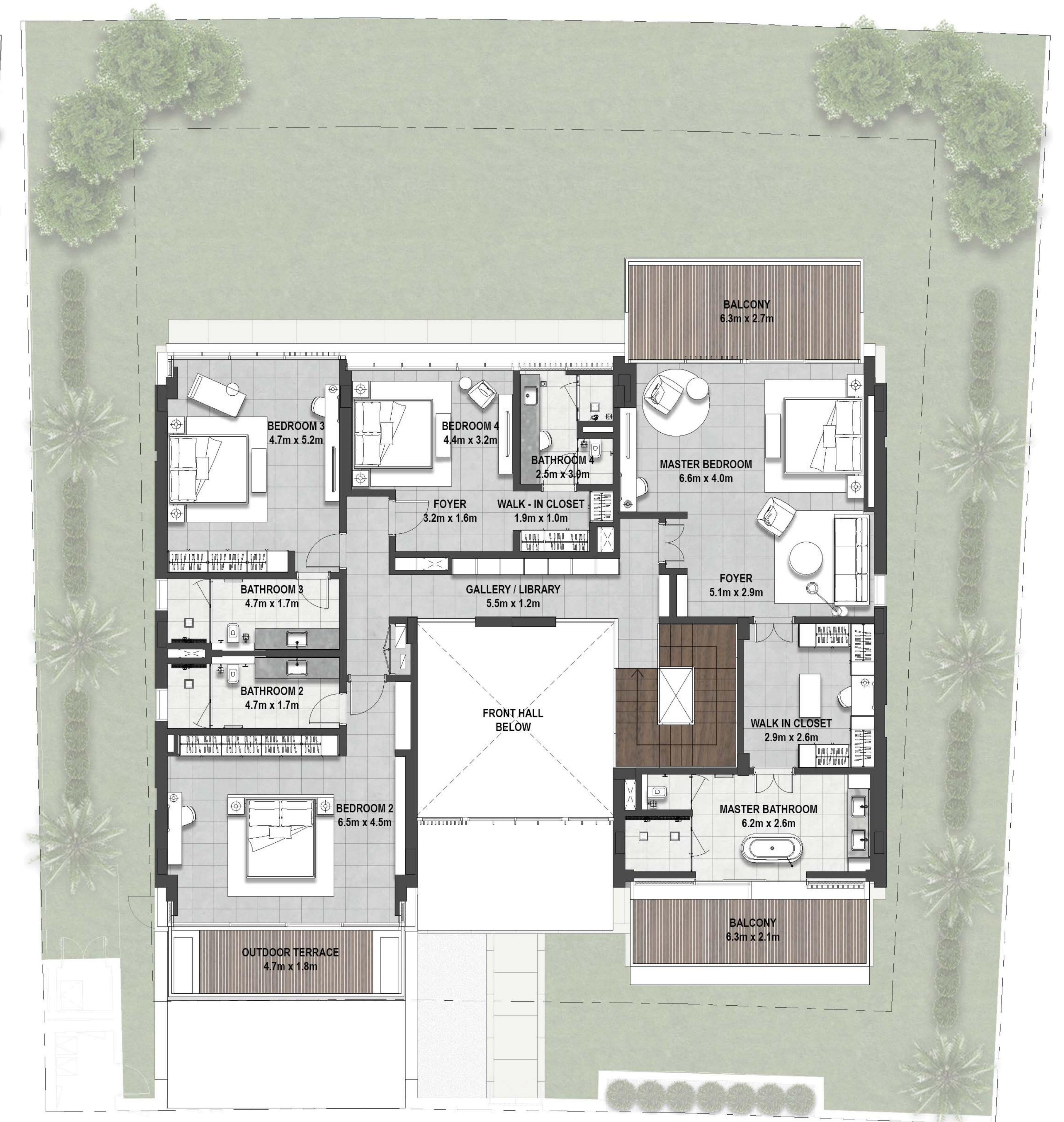
KEY PLAN



GOLF PLACE II



GROUND FLOOR



FIRST FLOOR

FLOOR PLAN 1. All dimensions are in imperial and metric, and measured from finish to finish excluding construction tolerances. 2. All materials, dimensions, and drawings are approximate only. 3. Information is subject to change without notice, at developer's absolute discretion. 4. Actual area may vary from the stated area. 5. Drawings not to scale. 6. All images used are for illustrative purposes only and do not represent the actual size, features, specifications, fittings, and furnishings. 7. The floor plan layout of the Property may be as shown above or its mirror replicate depending amongst others on the master plan layout and the location of the property within the master plan. 8. The developer reserves the right to make revisions / alterations, at it's absolute discretion, without any liability whatsoever.



# DUBAI HILLS ESTATE

GOLF PLACE II

## 5 BEDROOM

VILLA D3 - MODERN

SUITE AREA	5947 SQ.FT.	552.52 SQ.M.
GARAGE AREA	469 SQ.FT.	43.53 SQ.M.
ENTRY/TERRACE AREA	175 SQ.FT.	16.22 SQ.M.
BALCONY AREA	298 SQ.FT.	27.72 SQ.M.
TOTAL AREA	6889 SQ.FT.	639.99 SQ.M.

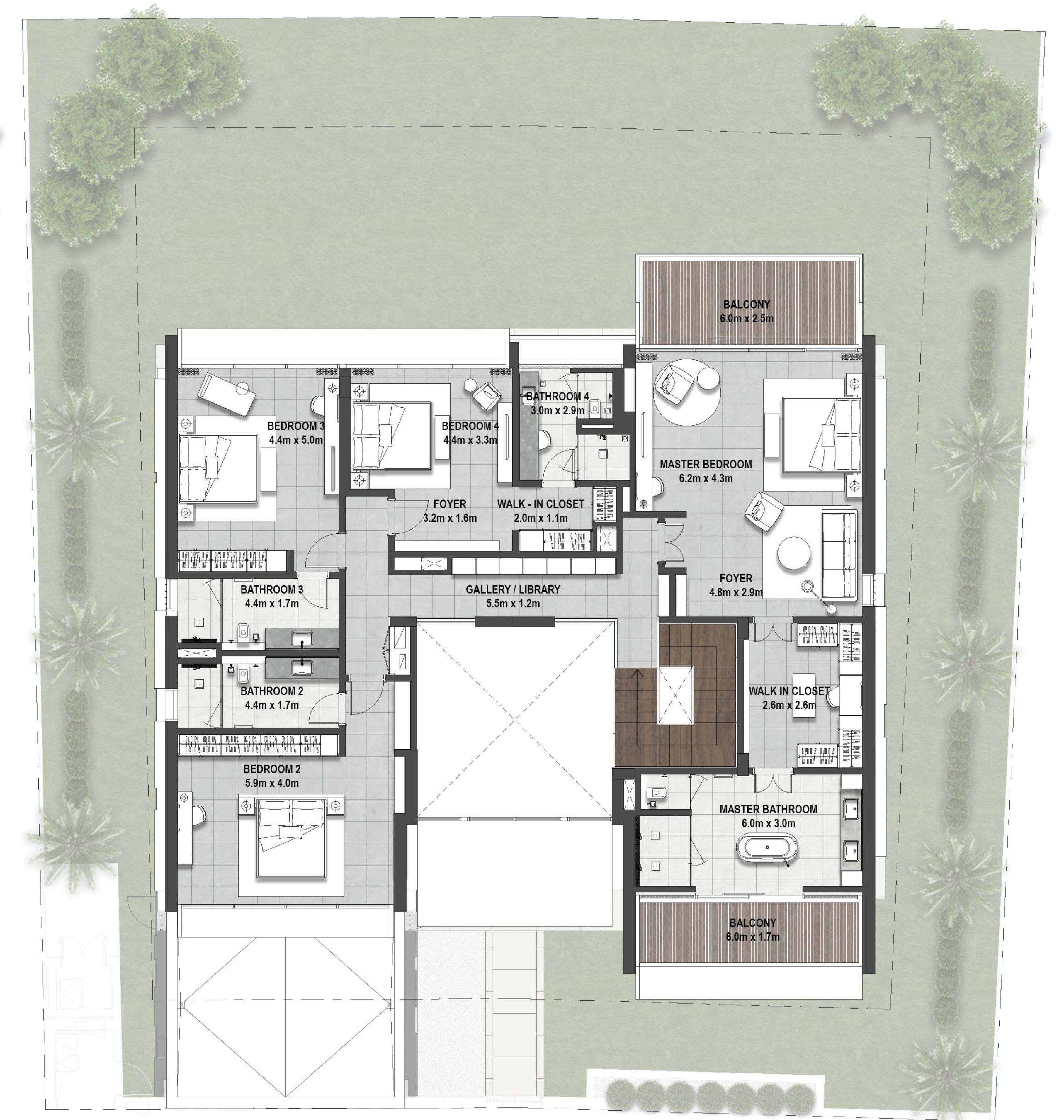
KEY PLAN



GOLF PLACE II



GROUND FLOOR



FIRST FLOOR

FLOOR PLAN 1. All dimensions are in imperial and metric, and measured from finish to finish excluding construction tolerances. 2. All materials, dimensions, and drawings are approximate only. 3. Information is subject to change without notice, at developer's absolute discretion. 4. Actual area may vary from the stated area. 5. Drawings not to scale. 6. All images used are for illustrative purposes only and do not represent the actual size, features, specifications, fittings, and furnishings. 7. The floor plan layout of the Property may be as shown above or its mirror replicate depending amongst others on the master plan layout and the location of the property within the master plan. 8. The developer reserves the right to make revisions / alterations, at it's absolute discretion, without any liability whatsoever.



# DUBAI HILLS ESTATE

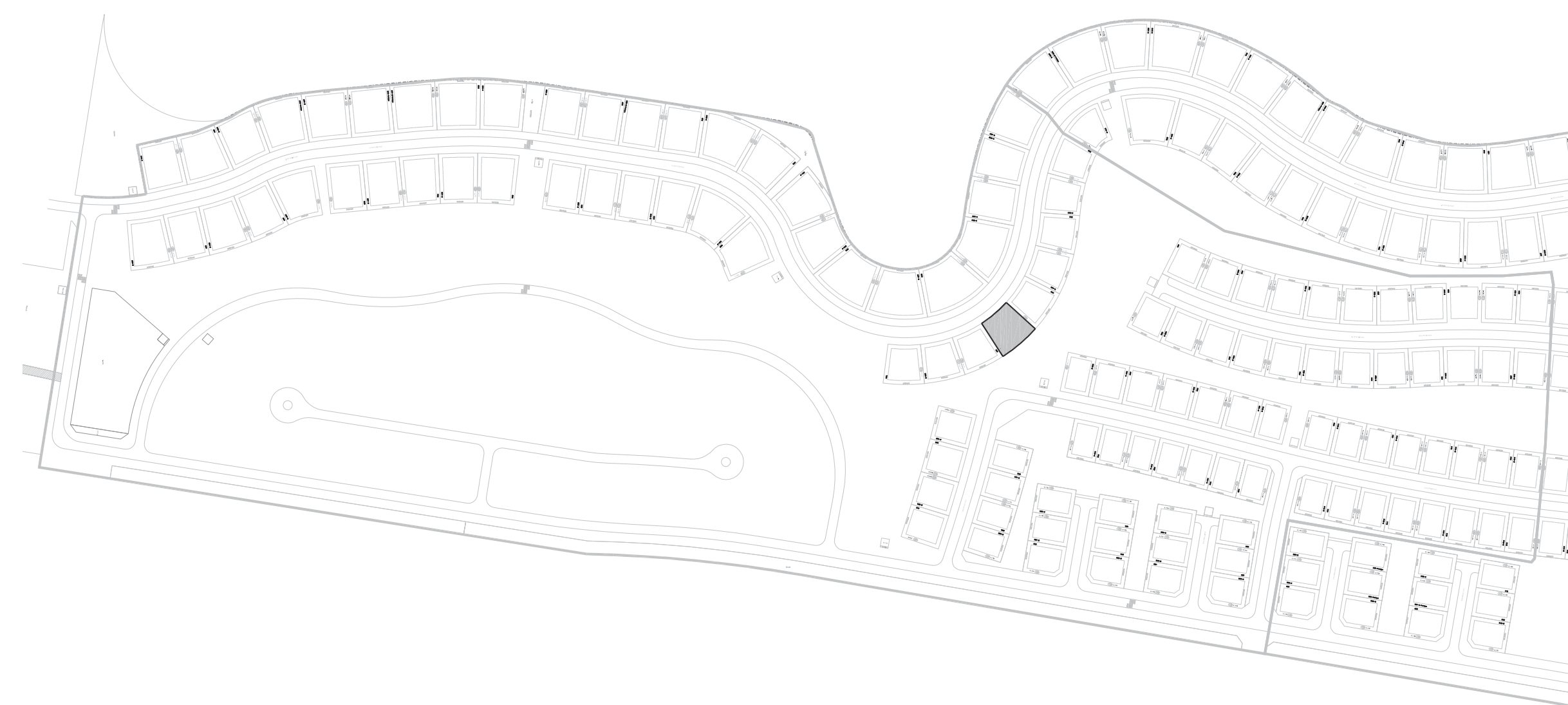
GOLF PLACE II

## 6 BEDROOM

VILLA D4 - ELEGANT

SUITE AREA	6278 SQ.FT.	583.23 SQ.M.
GARAGE AREA	408 SQ.FT.	37.89 SQ.M.
ENTRY/TERRACE AREA	557 SQ.FT.	51.74 SQ.M.
BALCONY AREA	125 SQ.FT.	11.61 SQ.M.
TOTAL AREA	7368 SQ.FT.	684.47 SQ.M.

KEY PLAN



GOLF PLACE II



GROUND FLOOR



FIRST FLOOR

FLOOR PLAN 1. All dimensions are in imperial and metric, and measured from finish to finish excluding construction tolerances. 2. All materials, dimensions, and drawings are approximate only. 3. Information is subject to change without notice, at developer's absolute discretion. 4. Actual area may vary from the stated area. 5. Drawings not to scale. 6. All images used are for illustrative purposes only and do not represent the actual size, features, specifications, fittings, and furnishings. 7. The floor plan layout of the Property may be as shown above or its mirror replicate depending amongst others on the master plan layout and the location of the property within the master plan. 8. The developer reserves the right to make revisions / alterations, at it's absolute discretion, without any liability whatsoever.