

A L M A R Y A H

*Vista<sup>2</sup>*

**R.**

LIVE LIFE YOUR WAY





# ريپورتاج العقارية Reportage. Properties

## ABOUT REPORTAGE

With over 20 years of experience, Reportage Properties is one of the largest private developers in the United Arab Emirates, with projects in Abu Dhabi, Dubai, and now Egypt.

We are focused and consistent in our objective to provide innovative, modern, and affordable housing solutions that not only offers our investors an outstanding value but also provide the home buyers a safe place to live in.

Our mission is to be amongst the most trusted real estate companies in the UAE by developing and providing homes that are cost-effective and that provide you with a sense of belonging. We look forward to 2021 and beyond, and aspire to expand our real estate business globally by partnering with international businesses.

HOMES WITH UNPARALLELED  
ELEGANCE AND COMFORT

منازل تحظى بمزايا  
وراحة لا تضاهي

## ريپورتاج العقارية

تمثل شركة ريبورتاج العقارية واحدة من أكبر مطوري العقارات الخاصة في دولة الإمارات العربية المتحدة، بحصيلة سنوات من الخبرة تتجاوز 20 عامًا، وبمشروعات قائمة في أبوظبي ودبي، والآن في مصر

وتركز الشركة في هدفها المتمثل في تقديم حلول إسكان مبتكرة وحديثة وبأسعار في المتناول، وهي حلول من شأنها أن توفر قيمة متميزة

تتمثل مهمة ريبورتاج العقارية في أن تكون أولى شركات العقارات الأكثر ثقة في دولة الإمارات العربية المتحدة، وذلك من خلال تطوير وتوفير منازل معقولة التكلفة تمنح ساكنيها الشعور بالانتماء. حيث نتطلع ونطمح إلى توسيع نطاق أعمالنا العقارية على مستوى العالم من خلال عقد شراكات مع مؤسسات الأعمال الدولية.



# AL MARYAH ISLAND

Al Maryah Island is amongst the most popular islands located in Abu Dhabi. It is designated as Abu Dhabi's Business and Lifestyle destination and is an international financial free zone that offers businesses the ideal landscape to invest, grow and thrive.

It is home to Abu Dhabi Global Market, the award winning IFC and governing authority of Al Maryah Island.

Al Maryah Island promises you luxury retail and high-end dining experiences, premium hospitality and world-class healthcare at Cleveland Clinic Abu Dhabi, while also being surrounded by striking waterfront promenade, which hosts some of Abu Dhabi's most exciting events.

ABU DHABI'S BUSINESS AND  
LIFESTYLE DESTINATION

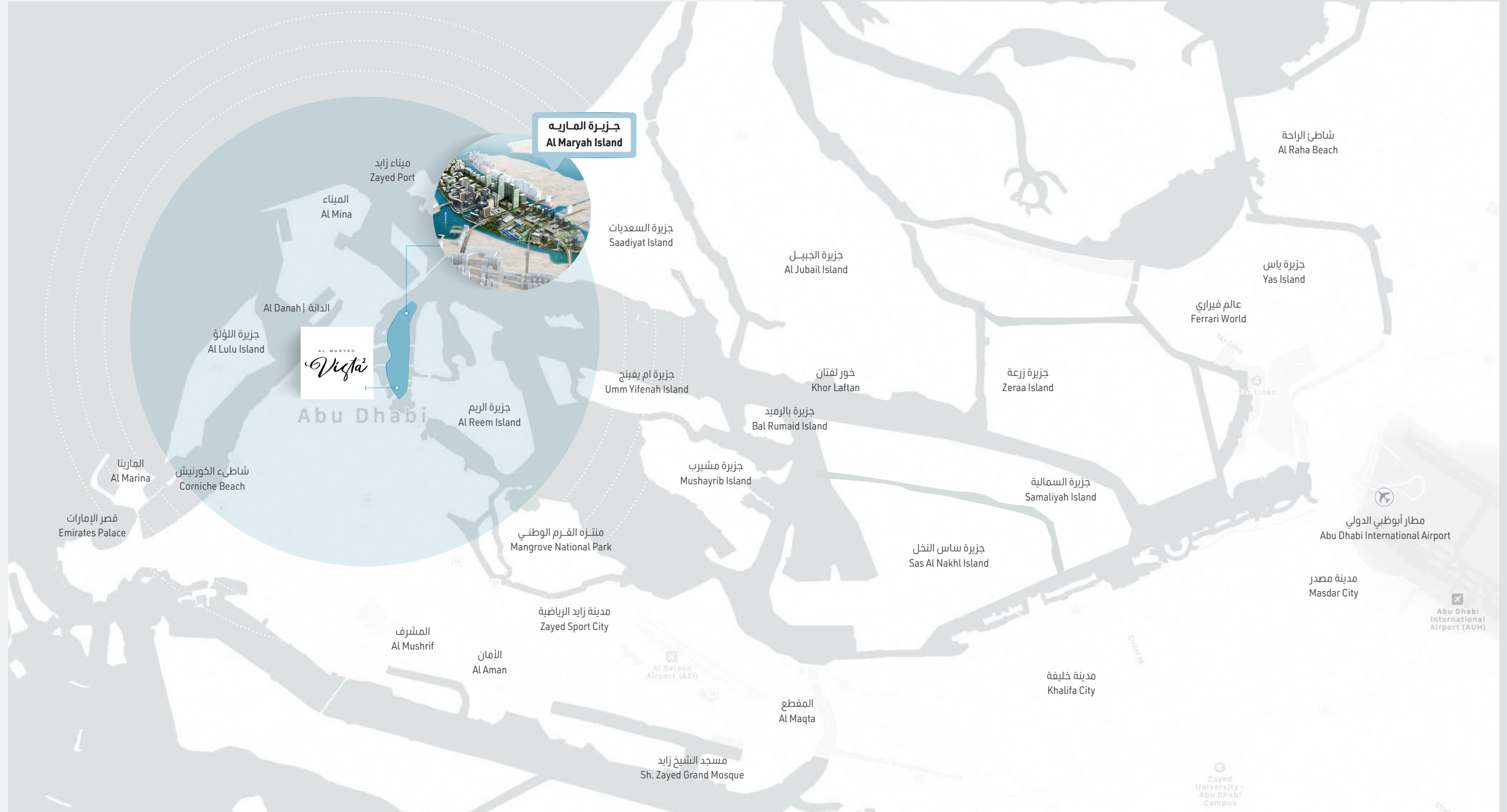
الوجهة الأولى للأعمال ونمط  
الحياة العصري بأبوظبي

## جزيرة المارية

تعد جزيرة الماريه من أشهر الجزر الموجودة في أبوظبي. تم تصنيفها كوجهة للأعمال وأسلوب الحياة في أبو ظبي وهي منطقة مالية دولية حرة توفر للشركات موقعا مثاليا للاستثمار والنمو والازدهار؛ حيث يتواجد بها سوق أبو ظبي العالمي الحائز على مؤسسة التمويل الدولية

تضمن لك جزيرة الماريه العديد من أفخر منافذ البيع بالتجزئة والمطاعم الراقية والضيافة المتميزة والرعاية الصحية ذات المستوى العالمي في كليفلاند كلينك أبوظبي ، بينما يحيط بك أيضًا منتزه الواجهة البحرية المذهل الذي يستضيف العديد من الفعاليات الأكثر إثارة في أبوظبي.

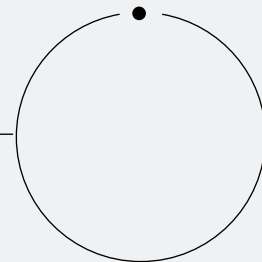




IDEALLY  
LOCATED

CLICK HERE

to view project location



5 Min

كليفلاند كلينيك أبوظبي  
Cleveland Clinic Abu Dhabi

5 Min

فندق روزوود أبوظبي  
Rosewood Abu Dhabi

5 Min

الغاليريا جزيرة الماريه  
The Galleria Mall Al Maryah Island

5 Min

فندق فورسيزونز أبوظبي  
Four Seasons Hotel Abu Dhabi

2 Min

أبوظبي مول  
Abu Dhabi Mall

3 Min

الشاطئ روتانا أبوظبي  
Beach Rotana Hotel

10 Min

جزيرة الريم  
Al Reem Island





Four Seasons Hotel

The Galleria

Rosewood Hotel

Cleveland Clinic

Al Reem Island

AL MARYAH  
*Vista²*

AL MARYAH  
VISTA

NEIGHBORHOOD





Harmonically interconnected, Al Maryah Vista 2 complements the vivid image of Al Maryah Vista 1, creating a perfectly designed community of landscape, cityscape and a magnificent view overlooking the water canal and both Al Reem and Al Maryah Islands.



تترباط المارية فيستا 2 بشكل متناغم مع الصورة الحية للمارية فيستا 1، مما يخلق مجتمعاً مصمماً بشكل مثالي من المناظر الطبيعية وإطلالة المدينة وإطلالة رائعة على القناة المائية وجزيرتي الريم والماريه.



# AL MARYAH VISTA 2 BEAUTY DRESSED IN BLUE



After the huge success of Al Maryah Vista 1, the beautiful island is ready to welcome Al Maryah Vista 2, to complement the serene image reflected on the water canal.

Al Maryah Vista offers an incomparable lifestyle embracing the shades of blue. Located in the heart of a free zone, Al Maryah Vista is a perfect opportunity for living and Investment. This exceptionally designed community is an exquisite

collection of premium homes and retail shops perfectly placed for you to wake up to views of gleaming white yachts, and walk up to Abu Dhabi's longest canal.

Within this vibrant area and the resort-like community in the heart of Abu Dhabi and an international financial free zone, a work-life balance is never easier to maintain.

## المارية فيستا 2 جمال باللون الأزرق

بعد النجاح الكبير الذي حققه مشروع المارية فيستا 1، تستعد الجزيرة الجميلة لاستقبال المارية فيستا 2 لتكتمل به الصورة البديعة المنعكسة على القناة المائية.

يوفر المارية فيستا 2 أسلوب حياة لا يواهى يحتضن ظلال اللون الأزرق. تقع المارية فيستا في قلب منطقة حرة، وهو فرصة مثالية للعيش والاستثمار. هذا المجتمع المصمم بشكل استثنائي هو عبارة عن مجموعة رائعة من المنازل الفاخرة ومحللات البيع بالتجزئة بموقع متميز لتستيقظ على المنظر الساحر لليخوت البيضاء المتلائية، وعلى بعد خطوات من أطول قناة مائية في أبوظبي.

في هذه المنطقة النابضة بالحياة والمجتمع الشبيه بالمنتجع في قلب أبوظبي والمنطقة المالية الدولية الحرة، أصبح تحقيق التوازن بين العمل و وقتك الخاص أسهل بكثير.



A CONTEMPORARY STORY  
INSPIRED BY ABU DHABI'S  
FUTURISTIC APPROACH



## فلسفة التصميم قصة تروى

على جزيرة الماريه، و مباشرة على الواجهة البحرية،  
تطل علينا المارية فيستا 2 كتحفة فنية من الحداثة  
والجمال، بدءًا من التشطيبات الخارجية عالية الجودة  
والواجهات والشرفات المصممة بعناية، إلى المساحات  
المصممة بشكل مثالي والفن الداخلي.

قصة معاصرة مستوحاة  
من نهج أبوظبي  
المستقبلي

## DESIGN PHILOSOPHY A STORY TO TELL

On Al Maryah Island, right at the waterfront, Al Maryah Vista II stands out as a masterpiece of modernity and aesthetics; starting from the high quality exterior finishing and the well-crafted facades and balconies to the perfectly designed spaces and interior art.





Simplex, Lofts and Duplex Apartments

# HARMONY'S PUREST SPEECH

Wake up to the shades of blue, enjoy your cup of tea at your terrace, and breathe the world in.



وحدات فردية ولوفتس ودوبلكس

## التناغم بأفضل تعبير

استيقظ على ظلال اللون الأزرق،  
واستمتع بكوب الشاي على شرفتك،  
وتنفس العالم.



## الحياة في متناول يديك

مساحة تجارية كبيرة من الماركات و المطاعم المفضلة لديك، ولا تنتهي الخيارات هنا، في فندق الفور سيزونز أبوظبي و فندق روزود أبوظبي وغيرهما من أفضل سلاسل الفنادق بالعاصمة، عيش رفاهية الضيافة المميزة، وصحتك دائما في أيد امينة مع كليفلاند كلينك أبو ظبي – رعاية صحية بمستوى عالمي على بعد خطوات منك.

واستمتع بتجربة الطعام و التسوق مع أرقى العلامات التجارية في الغاليريا – جزيرة الماريه، واجعل المسافة أقرب إلى أبوظبي مول.



## LIFE BROUGHT TO YOUR DOORSTEP

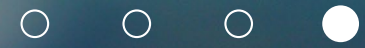
A large retail area of your favourite brands and restaurants, and Experiences can still go endless, at the Four Seasons Hotel Abu Dhabi, Rosewood Abu Dhabi, and other top Abu Dhabi hotel chains, experience luxury hospitality, and Feel better with Cleveland Clinic Abu Dhabi's world-class healthcare just minutes away.

At The Galleria Al Maryah Island, you can indulge in high-end shopping and fine dining, or Get a closer look at the Abu Dhabi Mall.





جدد نشاطك  
على المسبح واترك  
العالم خلفك



REJUVENATE  
BY THE POOL AND LEAVE  
THE WORLD BEHIND



# AMENITIES & FACILITIES



مسبح للأطفال  
Kids Swimming Pool

مسبح للكبار  
Adult Swimming Pool



منطقة محلات  
Retail Area



صالة ألعاب رياضية  
Gym



منطقة للشواء  
BBQ Area



مواقف سيارات مغطاة  
Covered Parkings



مصاعد كبيرة  
Large Lifts



مسجد  
Mosque



ردهة كبيرة  
Large Lobby



منطقة للعب الشطرنج العملاق  
Giant Chess Play Area



منطقة ألعاب البوتشي  
Bocce Play Area



منطقة لعب للأطفال  
Kids Play Area



# A HOME THAT TELLS THE STORY OF WHO YOU ARE

Be ready to welcome the astonishing views into your perfectly designed apartment. Every bit of space is thought of and well lit, reflected by a neutral colour palette and high-quality finishing that always meet the expectations of the passionate souls who seek elegance, serenity, and tranquillity.



## منزل يتحدث عنك

استعد لاستقبال المناظر الخلابة إلى داخل شقتك المصممة بشكل فريد. فكل جزء مصمم بدقة عالية وإضاءة مثالية، تعكسها لوحة ألوان محايدة وتشطيبات عالية الجودة تلبي دائمًا توقعات أولئك الذين يبحثون عن الصفاء والهدوء.





# UNIT | مميزات الوحدة FEATURES



- شرفات و تراسات حسب مخطط الوحدة.
- خزائن للمطبخ وكونترتوب.
- حمامات مكسوة بالكامل وأجنحة للضيوف حيثما كان ذلك متاحاً.
- نوافذ زجاجية مزدوجة.
- ألياف ضوئية لإنترنت عالي السرعة.
- تكييف هواء مركزي.
- دش بمقبض وحوض استحمام في كل حمام.
- خزانات ملابس في غرف النوم.
- Balconies / Terraces as per unit plan.
- Kitchen cabinets and countertops.
- Fully tiled bathrooms, en-suites and guest toilets wherever applicable.
- Double-glazed windows.
- Satellite master antenna and fibre optic connection for high-speed internet access.
- Central air conditioning.
- Shower with handle and bathtub in each bathroom.
- Built-in wardrobes in bedrooms.



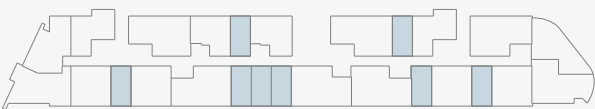
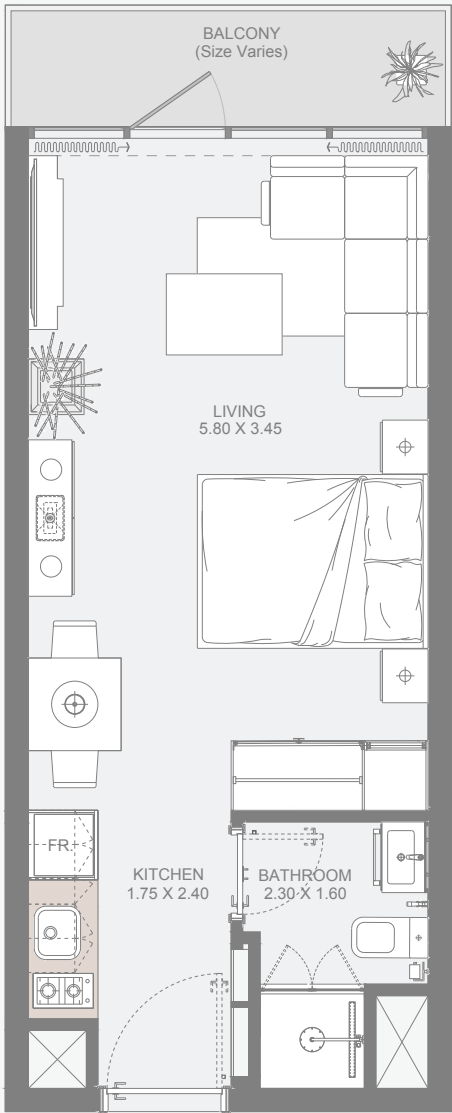


# STUDIO

TYPE - A

CLICK HERE

to view full loor plans



Available between 3<sup>rd</sup> to 31<sup>st</sup> Floors

Internal Area	315 sq.ft
Outdoor Area	24 to 62 sq.ft
Total Area	341 to 379 sq.ft

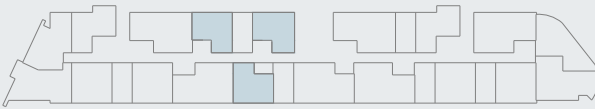
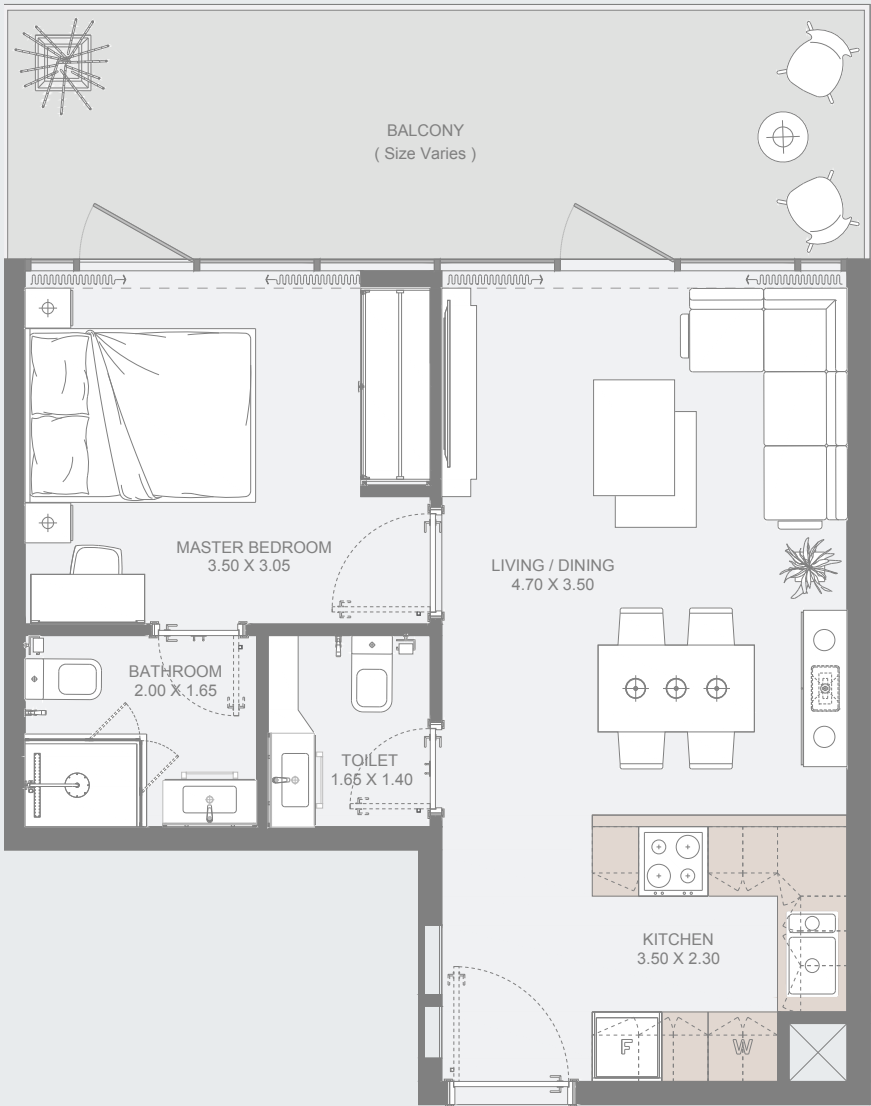
All drawings and dimensions are approximate. Drawings are not to scale and are subject to change without notice. The developer reserves the right to make revisions. The units are measured at typical floors in the building and columns may vary in size depending on the floor level. The furnishing and accessories shown are for representation only. The availability, length and width of the balcony varies depending on which floor and which orientation the unit is located within the building. There will be slight differences in the internal areas between the same unit types depending on the shaft sizes that go through the units.

# 1 BED

TYPE - A (SIMPLEX)

CLICK HERE

to view full loor plans



Available between 3<sup>rd</sup> to 30<sup>th</sup> Floors

Internal Area	479 sq.ft
Outdoor Area	136 to 298 sq.ft
Total Area	607 to 777 sq.ft

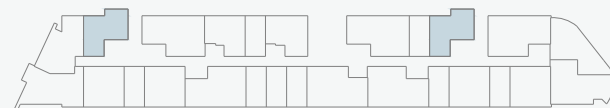
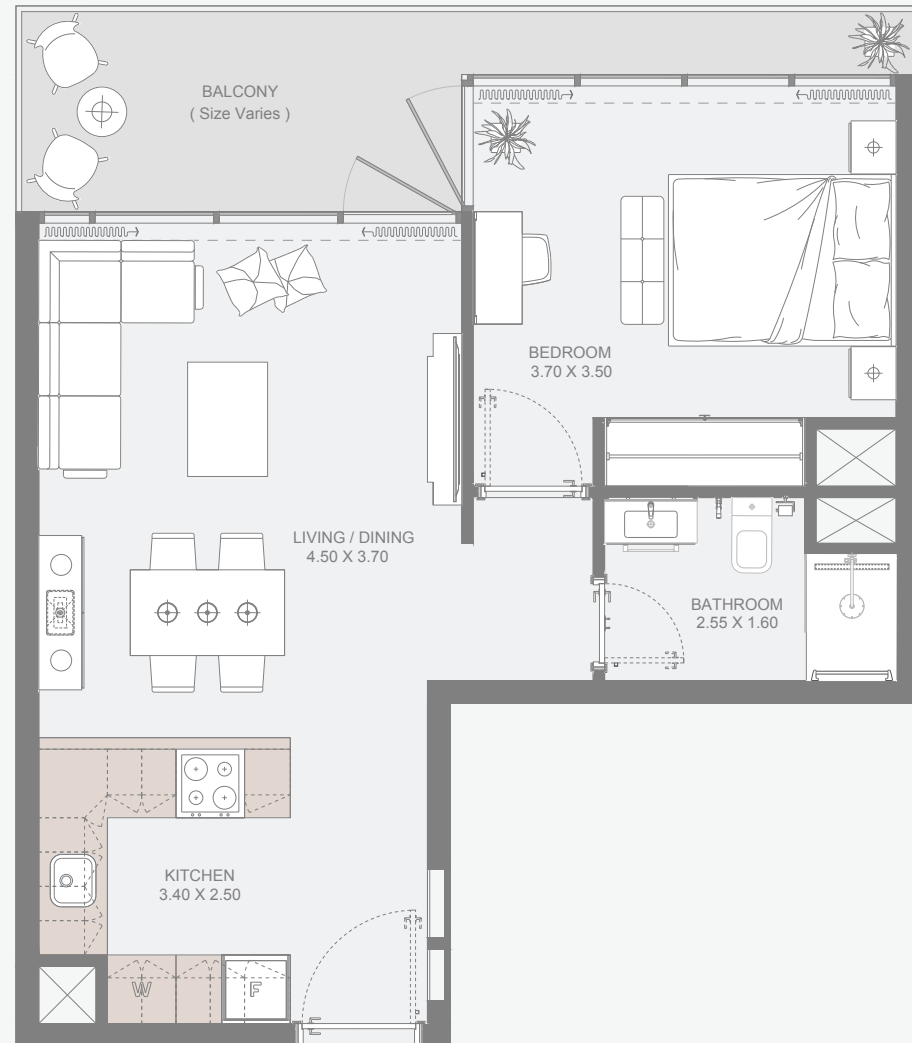
All drawings and dimensions are approximate. Drawings are not to scale and are subject to change without notice. The developer reserves the right to make revisions. The units are measured at typical floors in the building and columns may vary in size depending on the floor level. The furnishing and accessories shown are for representation only. The availability, length and width of the balcony varies depending on which floor and which orientation the unit is located within the building. There will be slight differences in the internal areas between the same unit types depending on the shaft sizes that go through the units.



# 1 BED

TYPE - B (SIMPLEX)

[CLICK HERE](#)  
to view full floor plans



Available between 3<sup>rd</sup> to 31<sup>st</sup> Floors

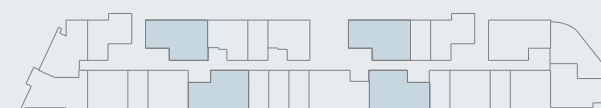
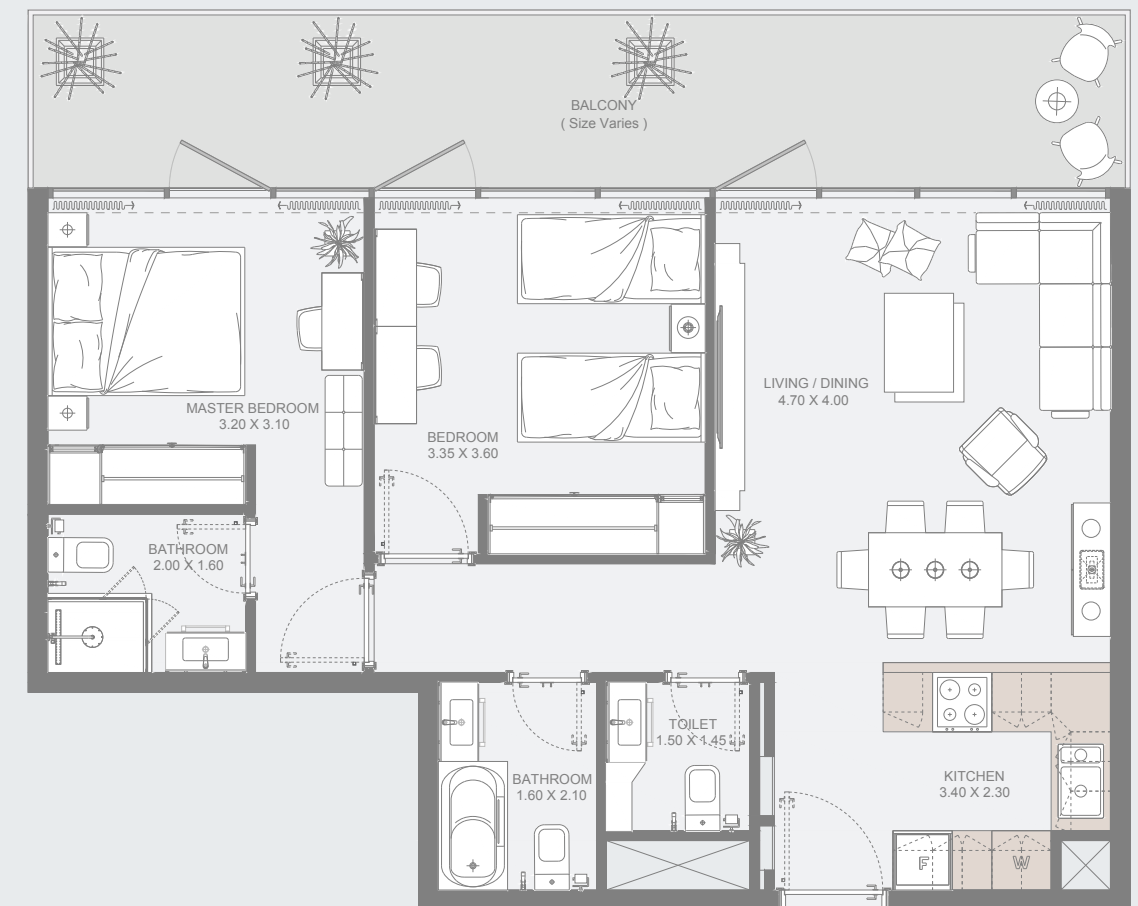
Internal Area	505 sq.ft
Outdoor Area	101 to 199 sq.ft
Total Area	599 to 704 sq.ft

All drawings and dimensions are approximate. Drawings are not to scale and are subject to change without notice. The developer reserves the right to make revisions. The units are measured at typical floors in the building and columns may vary in size depending on the floor level. The furnishing and accessories shown are for representation only. The availability, length and width of the balcony varies depending on which floor and which orientation the unit is located within the building. There will be slight differences in the internal areas between the same unit types depending on the shaft sizes that go through the units.

# 2 BED

TYPE - A (SIMPLEX)

[CLICK HERE](#)  
to view full floor plans



Available between 3<sup>rd</sup> to 31<sup>st</sup> Floors

Internal Area	741 sq.ft
Outdoor Area	209 to 419 sq.ft
Total Area	940 to 1160 sq.ft

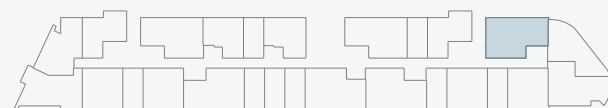
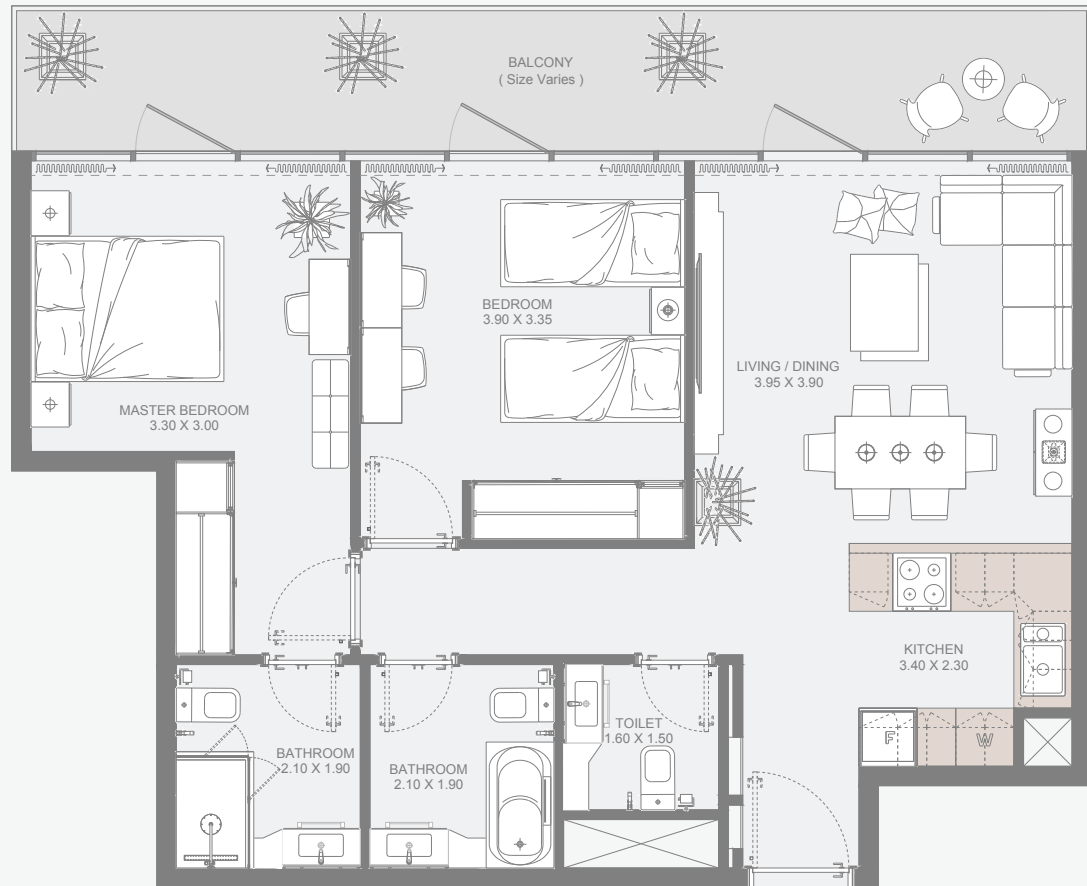
All drawings and dimensions are approximate. Drawings are not to scale and are subject to change without notice. The developer reserves the right to make revisions. The units are measured at typical floors in the building and columns may vary in size depending on the floor level. The furnishing and accessories shown are for representation only. The availability, length and width of the balcony varies depending on which floor and which orientation the unit is located within the building. There will be slight differences in the internal areas between the same unit types depending on the shaft sizes that go through the units.



# 2 BED

TYPE - B (SIMPLEX)

CLICK HERE  
to view full floor plans



Available between 3<sup>rd</sup> to 30<sup>th</sup> Floors

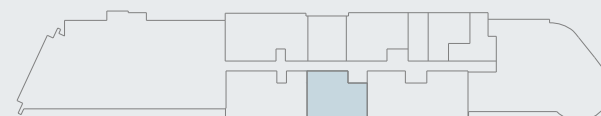
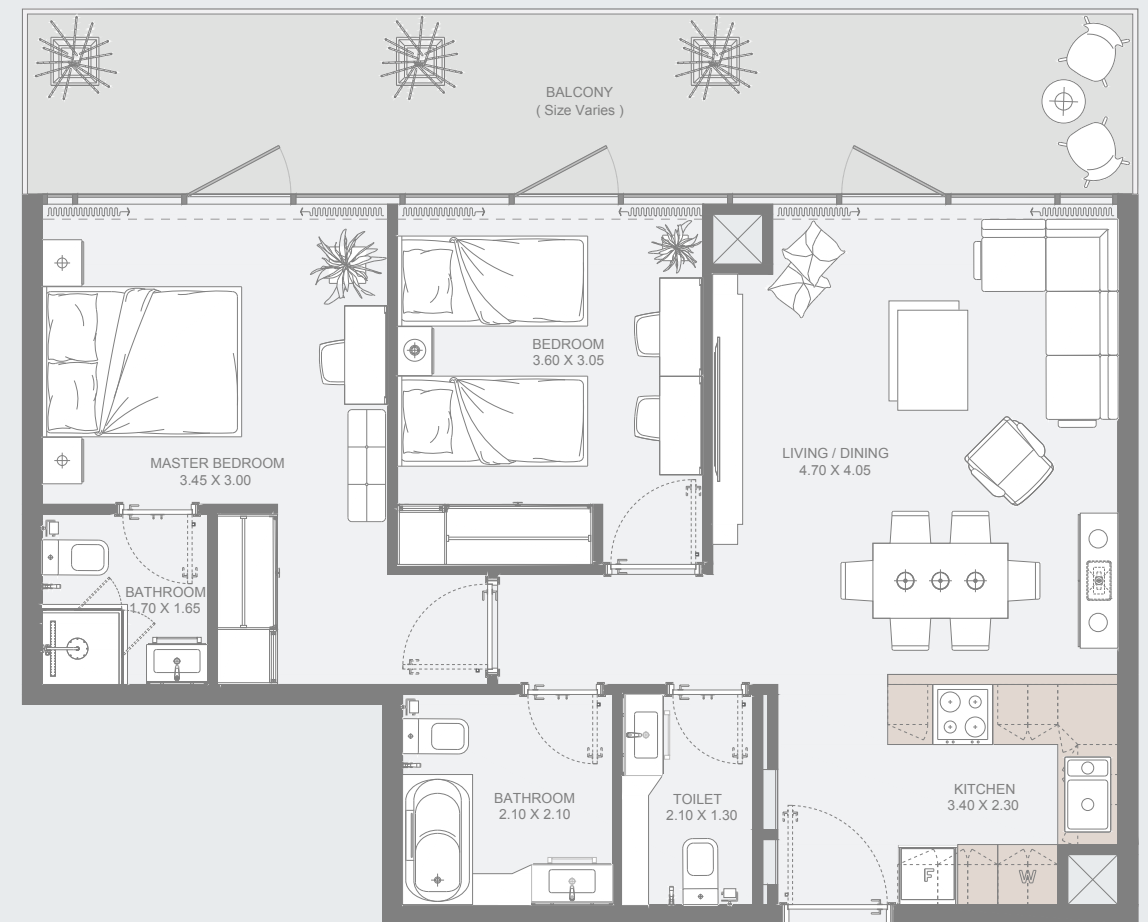
Internal Area	771 sq.ft
Outdoor Area	181 to 352 sq.ft
Total Area	952 to 1122 sq.ft

All drawings and dimensions are approximate. Drawings are not to scale and are subject to change without notice. The developer reserves the right to make revisions. The units are measured at typical floors in the building and columns may vary in size depending on the floor level. The furnishing and accessories shown are for representation only. The availability, length and width of the balcony varies depending on which floor and which orientation the unit is located within the building. There will be slight differences in the internal areas between the same unit types depending on the shaft sizes that go through the units.

# 2 BED

TYPE - C (SIMPLEX)

CLICK HERE  
to view full floor plans



Available only on 31<sup>st</sup> Floor

Internal Area	747 sq.ft
Outdoor Area	221 sq.ft
Total Area	968 sq.ft

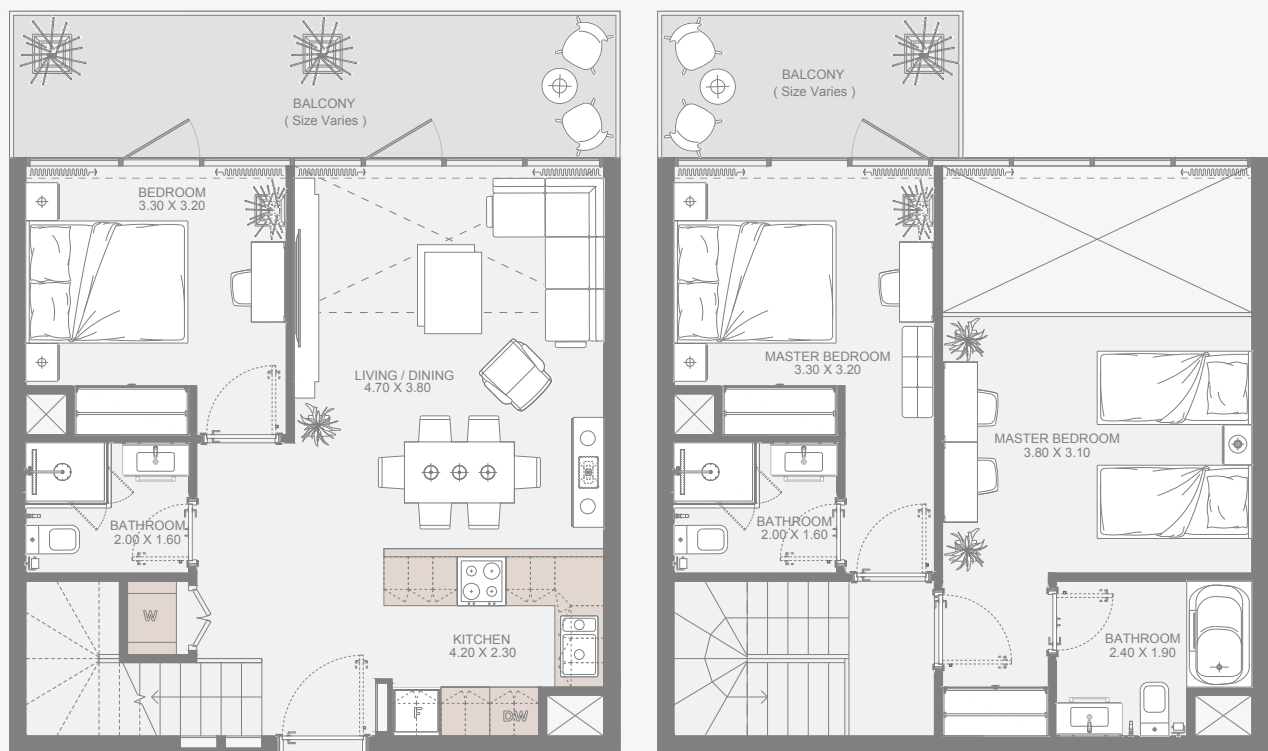
All drawings and dimensions are approximate. Drawings are not to scale and are subject to change without notice. The developer reserves the right to make revisions. The units are measured at typical floors in the building and columns may vary in size depending on the floor level. The furnishing and accessories shown are for representation only. The availability, length and width of the balcony varies depending on which floor and which orientation the unit is located within the building. There will be slight differences in the internal areas between the same unit types depending on the shaft sizes that go through the units.



# 3 BED

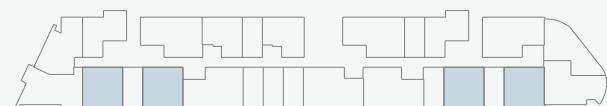
## TYPE - A (LOFT)

[CLICK HERE](#)  
to view full loor plans



LOWER FLOOR

UPPER FLOOR



Available between 3<sup>rd</sup> to 29<sup>th</sup> Floors

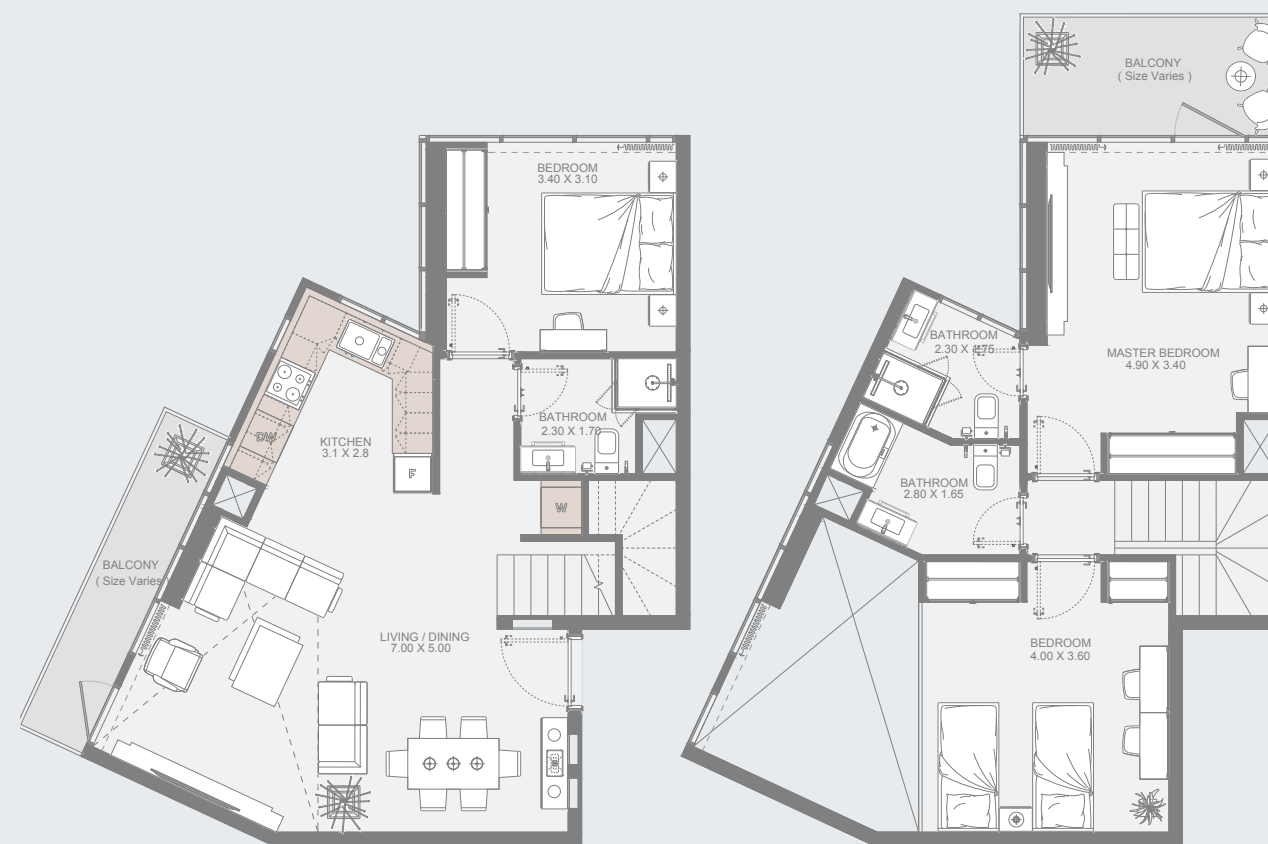
Internal Area	1023 sq.ft
Outdoor Area	202 to 288 sq.ft
Total Area	1224 to 1311 sq.ft

All drawings and dimensions are approximate. Drawings are not to scale and are subject to change without notice. The developer reserves the right to make revisions. The units are measured at typical floors in the building and columns may vary in size depending on the floor level. The furnishing and accessories shown are for representation only. The availability, length and width of the balcony varies depending on which floor and which orientation the unit is located within the building. There will be slight differences in the internal areas between the same unit types depending on the shaft sizes that go through the units.

# 3 BED

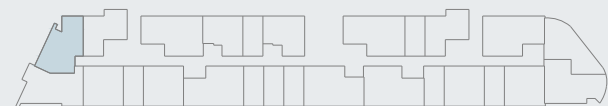
## TYPE - B (LOFT)

[CLICK HERE](#)  
to view full loor plans



LOWER FLOOR

UPPER FLOOR



Available between 5<sup>th</sup> to 29<sup>th</sup> Floors

Internal Area	1167 sq.ft
Outdoor Area	135 sq.ft
Total Area	1302 sq.ft

All drawings and dimensions are approximate. Drawings are not to scale and are subject to change without notice. The developer reserves the right to make revisions. The units are measured at typical floors in the building and columns may vary in size depending on the floor level. The furnishing and accessories shown are for representation only. The availability, length and width of the balcony varies depending on which floor and which orientation the unit is located within the building. There will be slight differences in the internal areas between the same unit types depending on the shaft sizes that go through the units.



# 3 BED

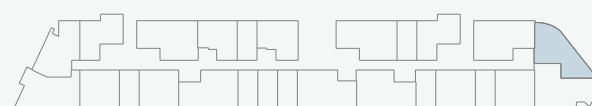
TYPE - C (DUPLEX)

[CLICK HERE](#)  
to view full floor plans



LOWER FLOOR

UPPER FLOOR



Available between 3<sup>rd</sup> to 29<sup>th</sup> Floors

Internal Area	1279 sq.ft
Outdoor Area	137 to 146 sq.ft
Total Area	1417 to 1425 sq.ft

All drawings and dimensions are approximate. Drawings are not to scale and are subject to change without notice. The developer reserves the right to make revisions. The units are measured at typical floors in the building and columns may vary in size depending on the floor level. The furnishing and accessories shown are for representation only. The availability, length and width of the balcony varies depending on which floor and which orientation the unit is located within the building. There will be slight differences in the internal areas between the same unit types depending on the shaft sizes that go through the units.

# 3 BED

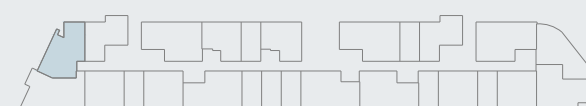
TYPE - D (DUPLEX)

[CLICK HERE](#)  
to view full floor plans



LOWER FLOOR

UPPER FLOOR



Available only at 3<sup>rd</sup> , 13<sup>th</sup> , 23<sup>rd</sup> Floors

Internal Area	1233 sq.ft
Outdoor Area	135 to 923 sq.ft
Total Area	1368 to 2156 sq.ft

All drawings and dimensions are approximate. Drawings are not to scale and are subject to change without notice. The developer reserves the right to make revisions. The units are measured at typical floors in the building and columns may vary in size depending on the floor level. The furnishing and accessories shown are for representation only. The availability, length and width of the balcony varies depending on which floor and which orientation the unit is located within the building. There will be slight differences in the internal areas between the same unit types depending on the shaft sizes that go through the units.

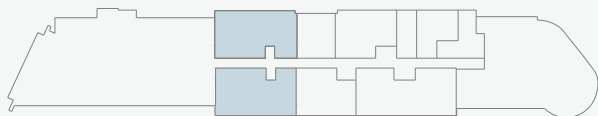
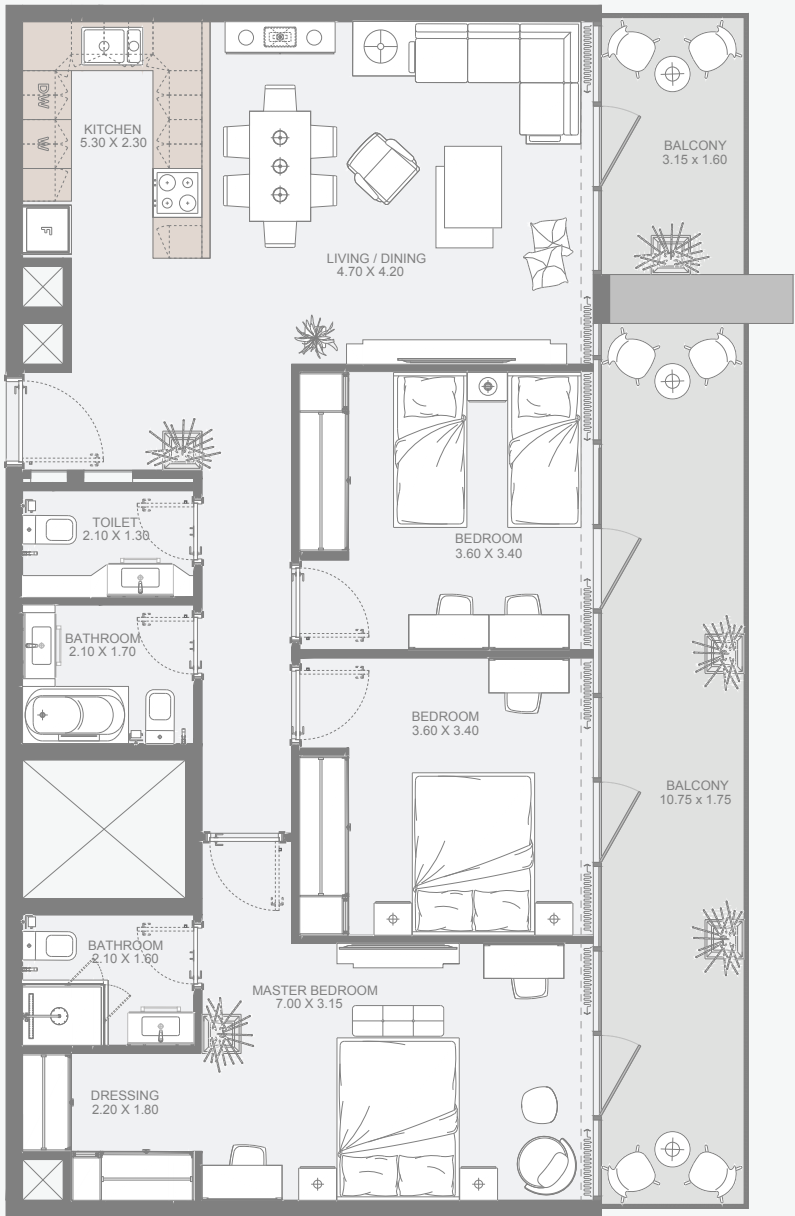


# 3 BED

TYPE - E (SIMPLEX)

CLICK HERE

to view full loor plans



Available only on 31<sup>st</sup> Floor

Internal Area	1068 sq.ft
Outdoor Area	274 to 297 sq.ft
Total Area	1350 to 1365 sq.ft

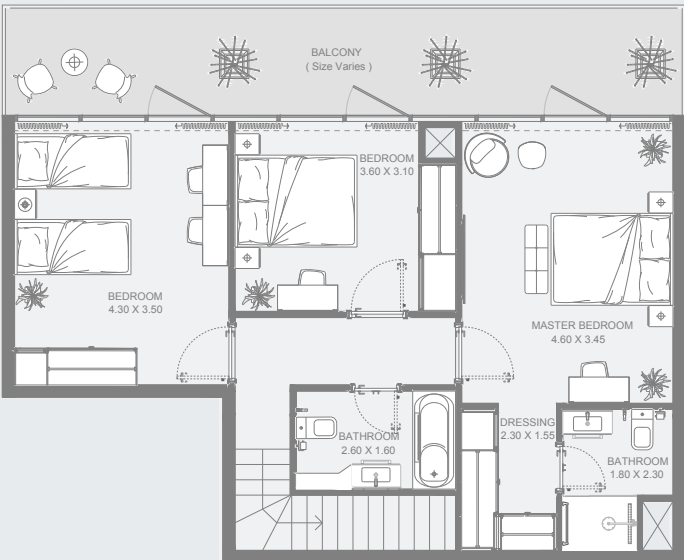
All drawings and dimensions are approximate. Drawings are not to scale and are subject to change without notice. The developer reserves the right to make revisions. The units are measured at typical floors in the building and columns may vary in size depending on the floor level. The furnishing and accessories shown are for representation only. The availability, length and width of the balcony varies depending on which floor and which orientation the unit is located within the building. There will be slight differences in the internal areas between the same unit types depending on the shaft sizes that go through the units.

# 4 BED

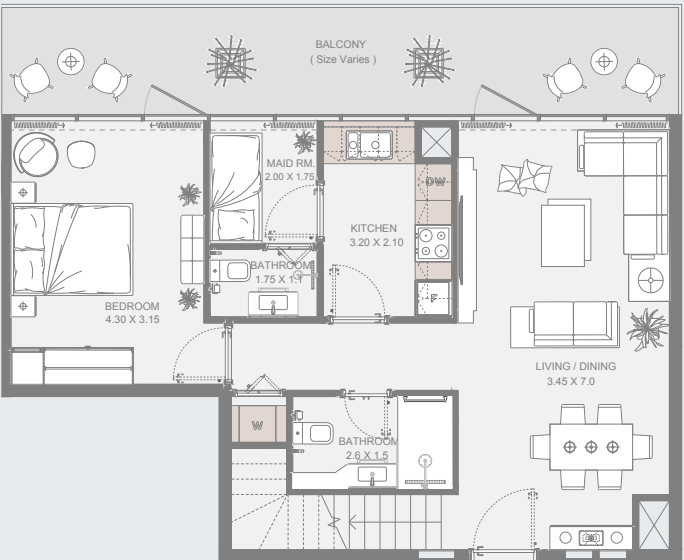
TYPE - A (DUPLEX)

CLICK HERE

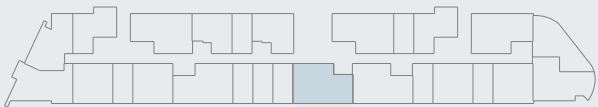
to view full loor plans



UPPER FLOOR



LOWER FLOOR



Available between 3<sup>rd</sup> to 29<sup>th</sup> Floors

Internal Area	1452 sq.ft
Outdoor Area	430 to 563 sq.ft
Total Area	1882 to 2016 sq.ft

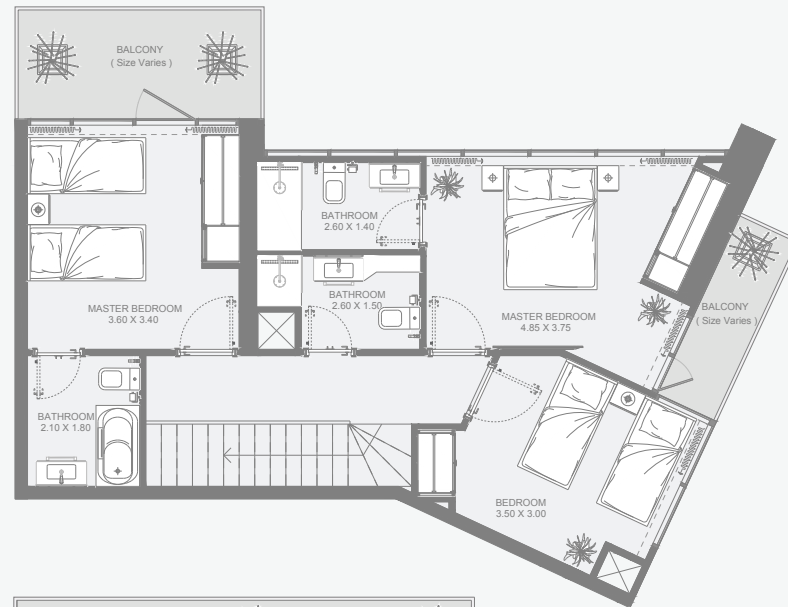
All drawings and dimensions are approximate. Drawings are not to scale and are subject to change without notice. The developer reserves the right to make revisions. The units are measured at typical floors in the building and columns may vary in size depending on the floor level. The furnishing and accessories shown are for representation only. The availability, length and width of the balcony varies depending on which floor and which orientation the unit is located within the building. There will be slight differences in the internal areas between the same unit types depending on the shaft sizes that go through the units.



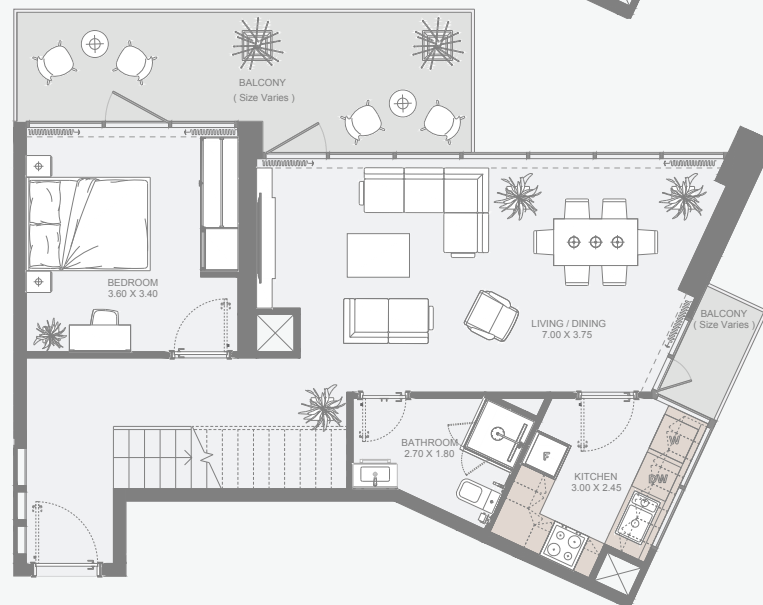
# 4 BED

TYPE - B (DUPLEX)

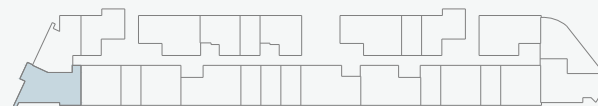
[CLICK HERE](#)  
to view full floor plans



UPPER FLOOR



LOWER FLOOR



Available between 3<sup>rd</sup> to 29<sup>th</sup> Floors

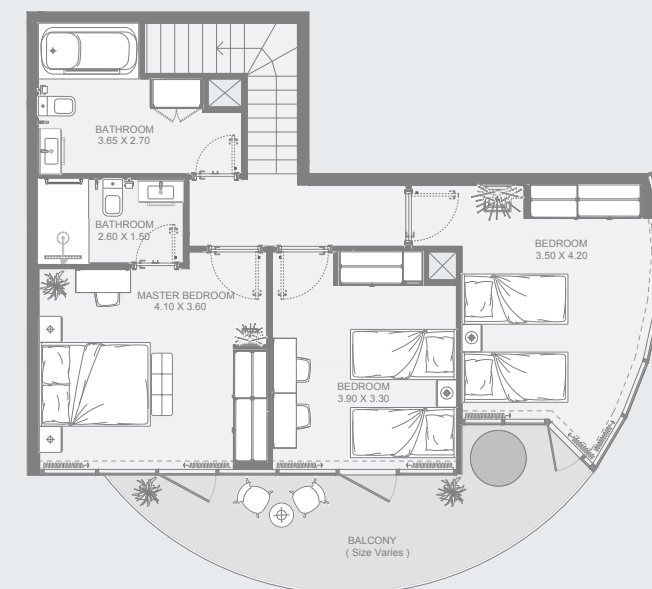
Internal Area	1388 sq.ft
Outdoor Area	298 to 1125 sq.ft
Total Area	1687 to 2515 sq.ft

All drawings and dimensions are approximate. Drawings are not to scale and are subject to change without notice. The developer reserves the right to make revisions. The units are measured at typical floors in the building and columns may vary in size depending on the floor level. The furnishing and accessories shown are for representation only. The availability, length and width of the balcony varies depending on which floor and which orientation the unit is located within the building. There will be slight differences in the internal areas between the same unit types depending on the shaft sizes that go through the units.

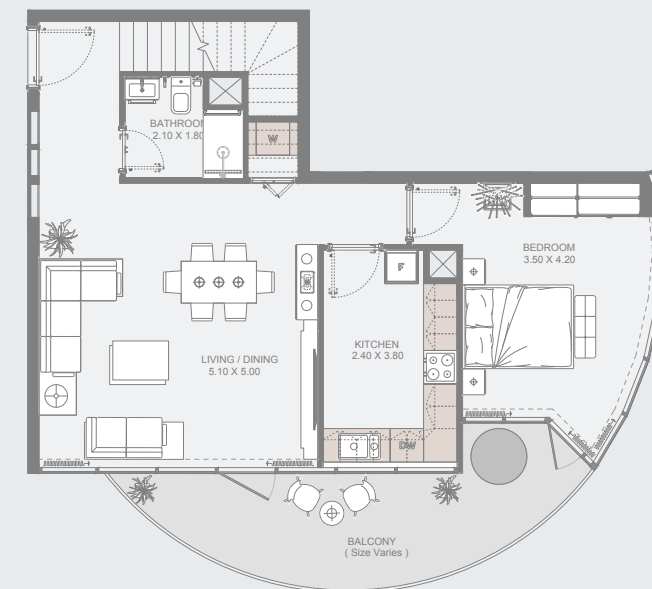
# 4 BED

TYPE - C (DUPLEX)

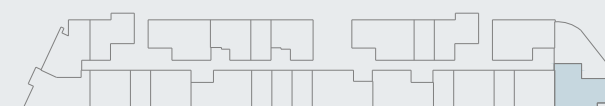
[CLICK HERE](#)  
to view full floor plans



UPPER FLOOR



LOWER FLOOR



Available between 3<sup>rd</sup> to 29<sup>th</sup> Floors

Internal Area	1484 sq.ft
Outdoor Area	324 to 454 sq.ft
Total Area	1809 to 1938 sq.ft

All drawings and dimensions are approximate. Drawings are not to scale and are subject to change without notice. The developer reserves the right to make revisions. The units are measured at typical floors in the building and columns may vary in size depending on the floor level. The furnishing and accessories shown are for representation only. The availability, length and width of the balcony varies depending on which floor and which orientation the unit is located within the building. There will be slight differences in the internal areas between the same unit types depending on the shaft sizes that go through the units.

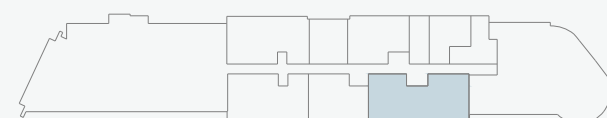
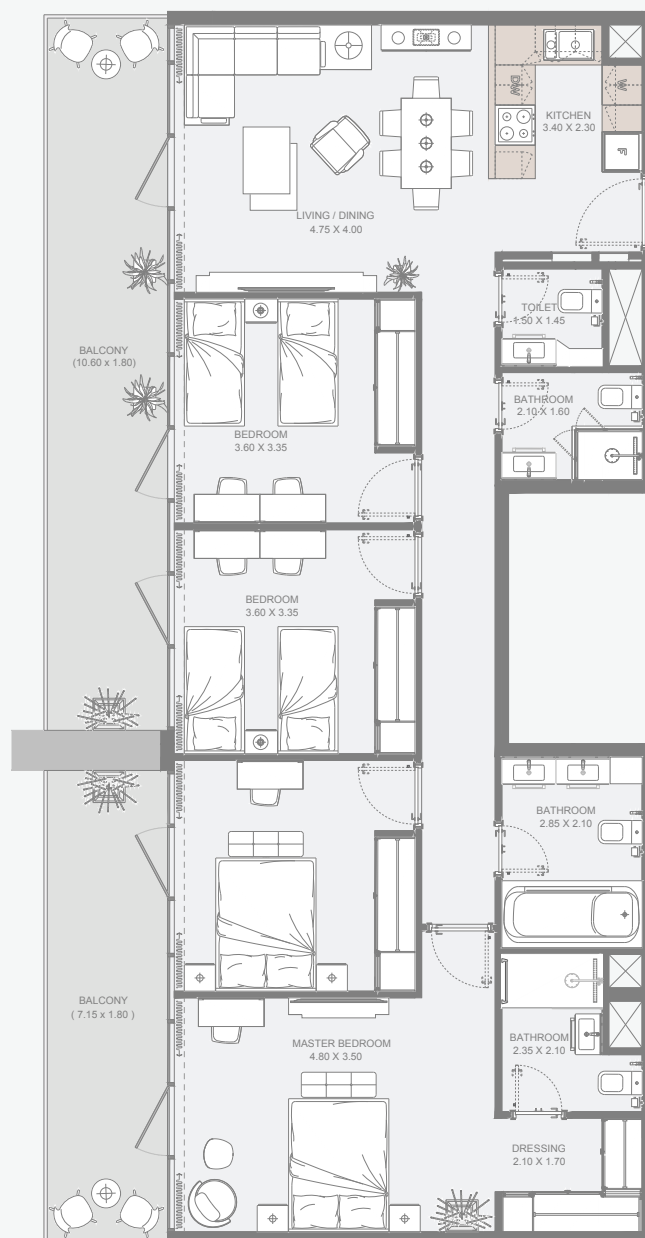


# 4 BED

TYPE - D (SIMPLEX)

CLICK HERE

to view full floor plans



Available only on 31<sup>st</sup> Floor

Internal Area	1284 sq.ft
Outdoor Area	364 sq.ft
Total Area	1648 sq.ft

All drawings and dimensions are approximate. Drawings are not to scale and are subject to change without notice. The developer reserves the right to make revisions. The units are measured at typical floors in the building and columns may vary in size depending on the floor level. The furnishing and accessories shown are for representation only. The availability, length and width of the balcony varies depending on which floor and which orientation the unit is located within the building. There will be slight differences in the internal areas between the same unit types depending on the shaft sizes that go through the units.



**Reportage.**  
Properties