

ELYSIAN MANSIONS

PARK LANE

A STUNNING ESTATE GARDEN

Situated amidst the largest private gardens in Tlal Al Ghaf, the Park Lane residences feature unfettered access to a lush, natural terrain, inspired by the world's grandest estates. Complementing the expansive gardens are the landscapes of the private Mansions, expertly designed to blur the lines between nature and architecture.

Owners can choose between a number distinct home types for these premium plots, with interior, exterior, and landscape designs tailored to your specifications.





TILAL AL GHAF MASTERPLAN



ELYSIAN
MANSIONS

- | | | | | | |
|------------------|-------------------------------|----------------------|-----------------------|---------------------------|------------------------------|
| Sandy Beach | Central Park | Indoor & Outdoor Gym | Children's Play Areas | International School | Daycare |
| Beach Cabanas | 18km Walking & Cycling Trails | Basketball Court | Water Splash Park | Beach Restaurants & Cafés | Holistic Healthcare Facility |
| Beach Volleyball | Table Tennis | Outdoor Cinema | Swimming Pools | Community Town Centre | Mosques |
| Water Sports | Tennis Court | Skate Park | Trampoline Parks | BBQ Stations | Retail Hub |



AN OASIS OF REFINED LIVING

Elysian Mansions is an exclusive, residential waterfront enclave abutting the lagoon of Tlal Al Ghaf. Inspired by the Elysian Fields of Greek mythology, this hallmark luxury neighbourhood conceived by Majid Al Futtain offers the most distinctive and thoughtful residences to date.

These bespoke, expertly crafted mansions are tailored to your tastes, with generous spaces, stunning finishes, and expansive pockets of natural beauty woven throughout the homes.



DISCOVER
YOUR
PERSONAL
PARADISE





QUIETLY
SOPHISTICATED

INTIMACY & HOSPITALITY



CRAFTED WITH DISTINCTION

Led by contemporary architecture, yet rooted in classic home design, Elysian Mansions offers smart, technology-enabled homes with uncompromising aesthetics.





KEYPLAN & PUBLIC REALM



ELYSIAN
MANSIONS

- 01. Main Entrance
- 02. Promenade
- 03. The Pavilion
- 04. Terraced Gardens

Lagoonside

- 05. The Orchards
- 06. The Alle
- 07. The Dining Room
- 08. The Clock Tower

- 09. The Kitchen Gardens
- 10. The Water Gardens
- 11. Sikka Gardens
- 12. The Forest Walk

Hilltop

- 13. The Tuileries
- 14. The Maze Garden
- 15. The Grand Lawn
- 16. The library of trees

Park Lane

- 17. The Beach Access
- 18. The Private Beach
- 19. Stargazing Room
- 20. Parking Area

- 21. Informal Lawn
- 22. Plazas



A BESPOKE SANCTUARY



Grand double height entry



Access to exclusive beach & recreational lagoon



Secured gated community



Luxury marble flooring



Largest exclusive park in Tital Al Ghaf



Stone cladded exterior facades



Emphasis on the indoor/outdoor relationship



Expansive terraces & outdoor spaces with upgrade options



Triple-height courtyards



Bespoke ergonomic & biophilic architecture



European kitchens with integrated appliances



Spacious walk-in closets with accessorized wardrobes



Car galleries for 6 to 8 cars



Elevator in each mansion



A selection of bespoke upgrades to suit your needs



Premium wooden flooring in bedrooms

TAILORED TO YOUR TASTES

A selection of facade palettes, ranging from deep, moody stones to warm textured neutrals, captures the individual grandeur of each mansion—creating a bespoke and private oasis all your own.



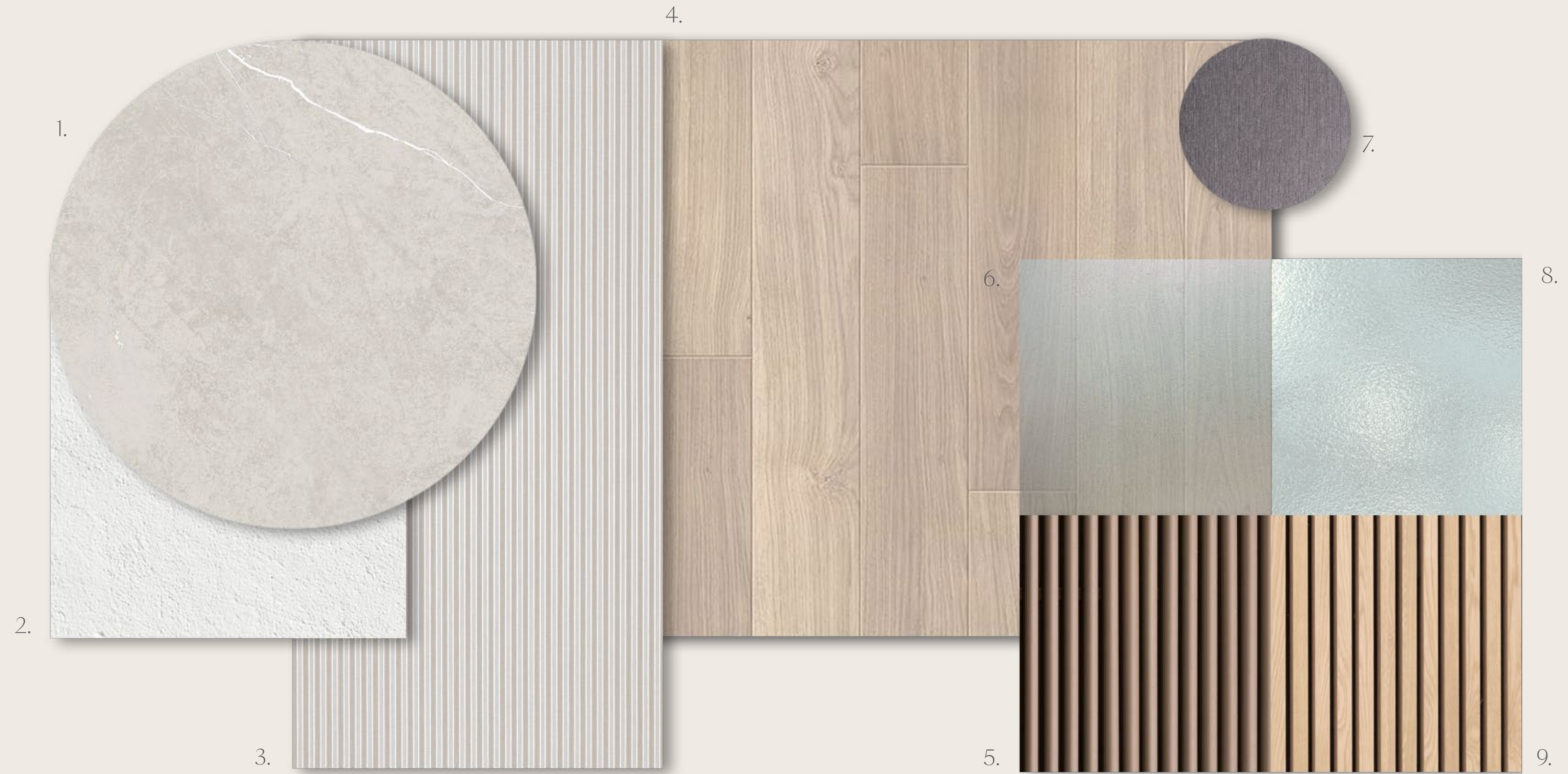
Timeless



Prestige

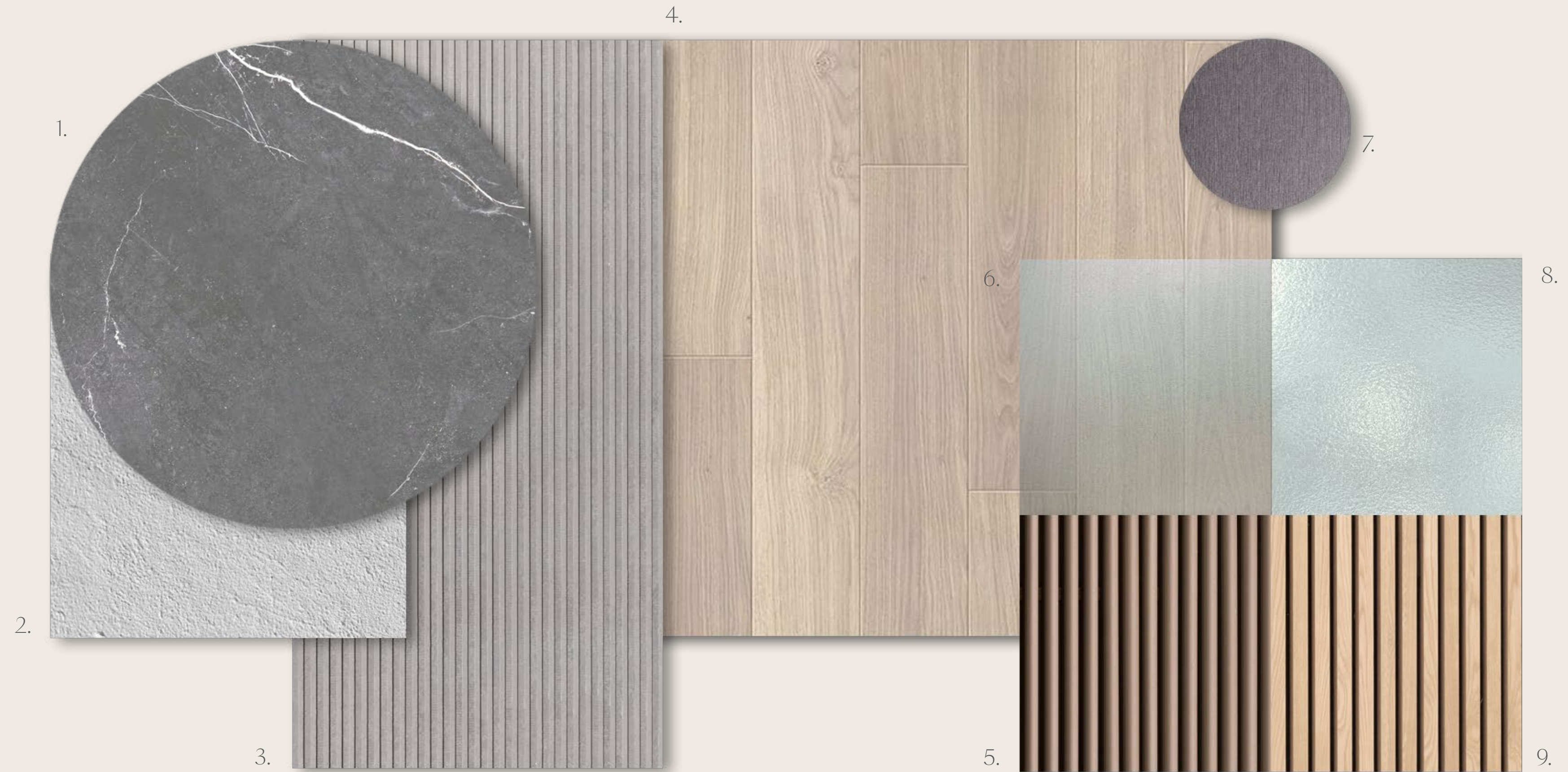
EXTERIOR FACADE MATERIALS TIMELESS

-
1. Stone Cladding
 2. Render Paint
 3. Textured Stone Cladding
 4. Wood Effect Panels
 5. Wood Effect Shutters
 6. High Performance Glass
 7. Metal Sheets
 8. Glass Balustrade
 9. Wood Effect Louvers
-



EXTERIOR FACADE MATERIALS PRESTIGE

-
1. Stone Cladding
 2. Render Paint
 3. Textured Stone Cladding
 4. Wood Effect Panels
 5. Wood Effect Shutters
 6. High Performance Glass
 7. Metal Sheets
 8. Glass Balustrade
 9. Wood Effect Louvers
-



TAILORED TO YOUR TASTES

Inside the homes, a selection of interior palettes features rich, natural materials, including an array of veined marbles, carved timber, and charismatic metals, weave throughout the mansions, bestowing timeless, thoughtful elegance.



Pearl



Onyx

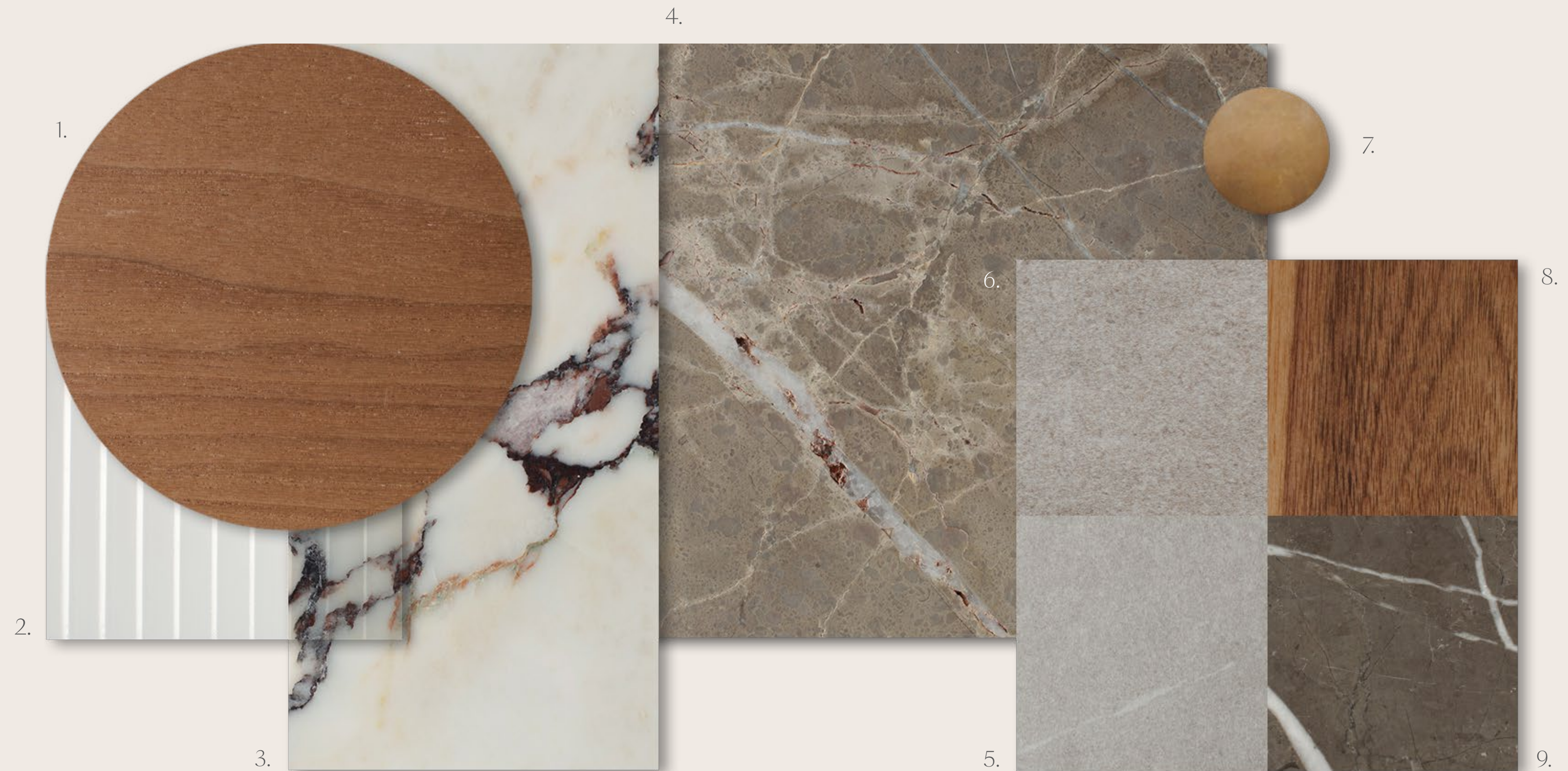
INTERIOR MATERIALS MAIA, IRIS PEARL

1. Kitchen and Wardrobe Veneer
2. Clear Fluted Glass
3. Kitchen Island Marble
4. Marble General Flooring and Master Bathroom
5. Secondary Bathroom Porcelain Floor Tiles
6. Secondary Bathroom Porcelain Wall Tiles
7. General Metal Accent
8. Bedroom Wood Flooring
9. Marble Vanity and Feature Wall



INTERIOR MATERIALS MAIA, IRIS ONYX

1. Kitchen and Wardrobe Veneer
2. Clear Fluted Glass
3. Kitchen Island Marble
4. Marble General Flooring and Master Bathroom
5. Secondary Bathroom Porcelain Floor Tiles
6. Secondary Bathroom Porcelain Wall Tiles
7. General Metal Accent
8. Bedroom Wood Flooring
9. Marble Vanity and Feature Wall



THE COLLECTION

MAIA





120











M A I A

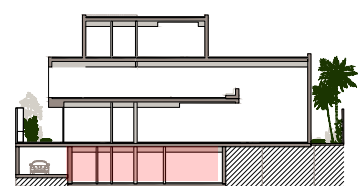
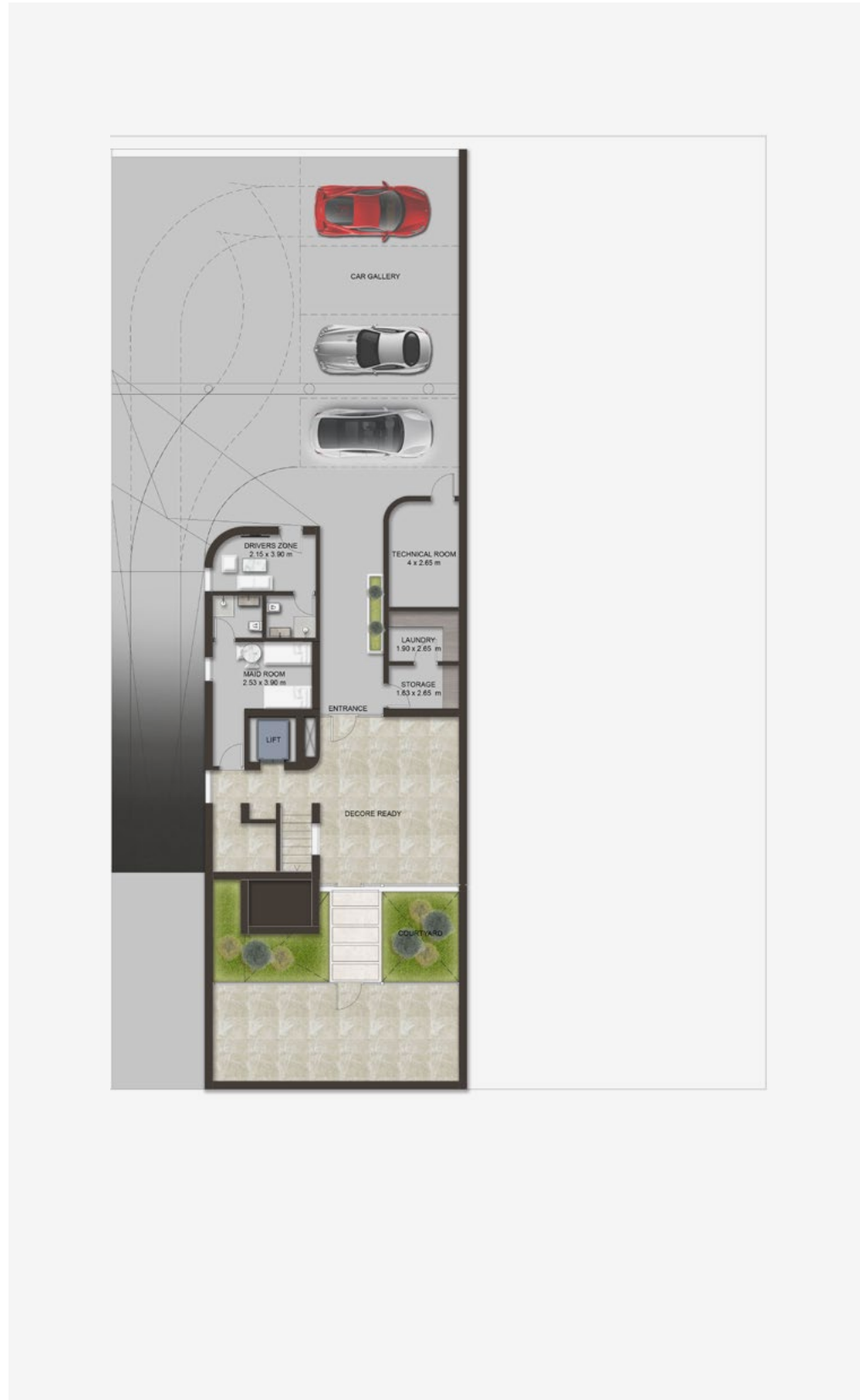
TYPE 1

Amenities

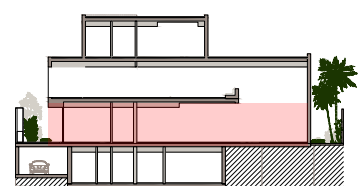
- Double Height Entry
- Double Height Spaces
- Private Home Elevator
- Underground Car Gallery
- Formal Living Area
- Two Family Living Areas
- Guest Suite
- His & Hers Walk in Closets
- Nanny Room
- Driver's Room
- Maid's Room
- Sunken Garden

Internal Area	725 sqm / 7,804 sqft
Balcony/Terrace	68 sqm / 729 sqft
Garage	199 sqm / 2,139 sqft
Total Area	991 sqm / 10,672 sqft

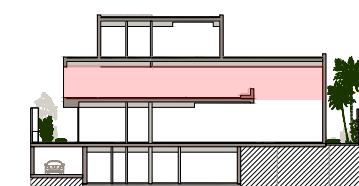
BASEMENT
375 sqm / 4,040 sqft



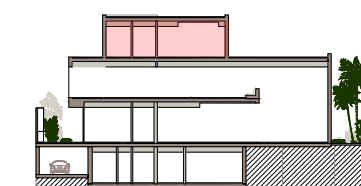
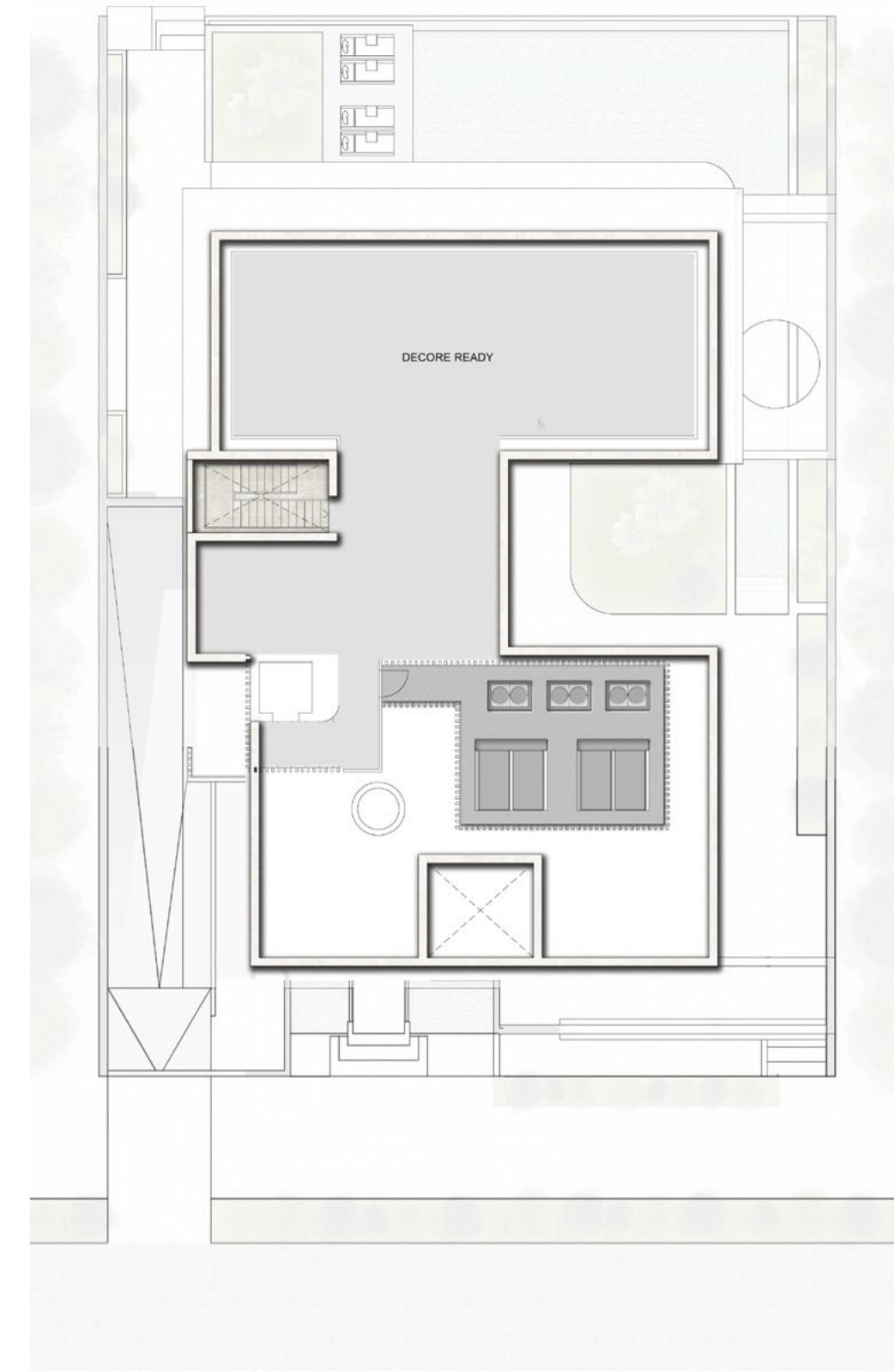
GROUND FLOOR
265 sqm / 2,850 sqft



FIRST FLOOR
351 sqm / 3,782 sqft



ROOFTOP



M A I A

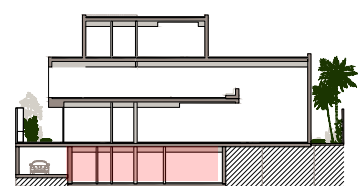
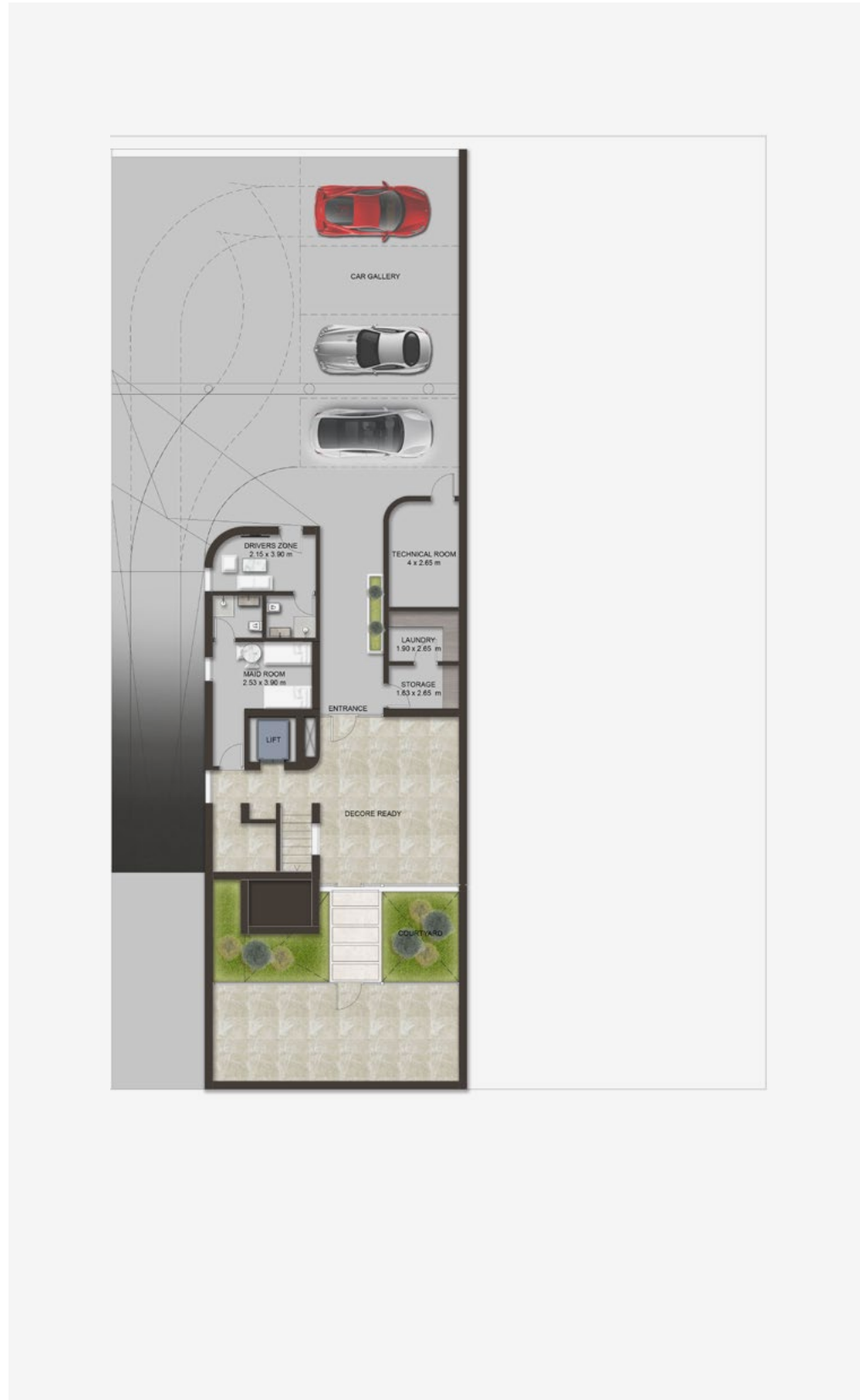
TYPE 2

Amenities

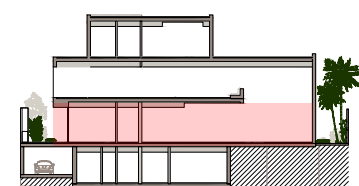
- Double Height Entry
- Double Height Spaces
- Private Home Elevator
- Underground Car Gallery
- Formal Living Area
- Two Family Living Areas
- Majlis
- His & Hers Walk in Closets
- Nanny Room
- Driver's Room
- Maid's Room
- Sunken Garden

Internal Area	725 sqm / 7,804 sqft
Balcony/Terrace	68 sqm / 729 sqft
Garage	199 sqm / 2,139 sqft
Total Area	991 sqm / 10,672 sqft

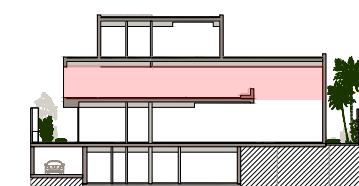
BASEMENT
375 sqm / 4,040 sqft



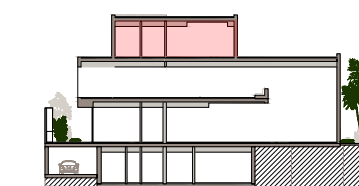
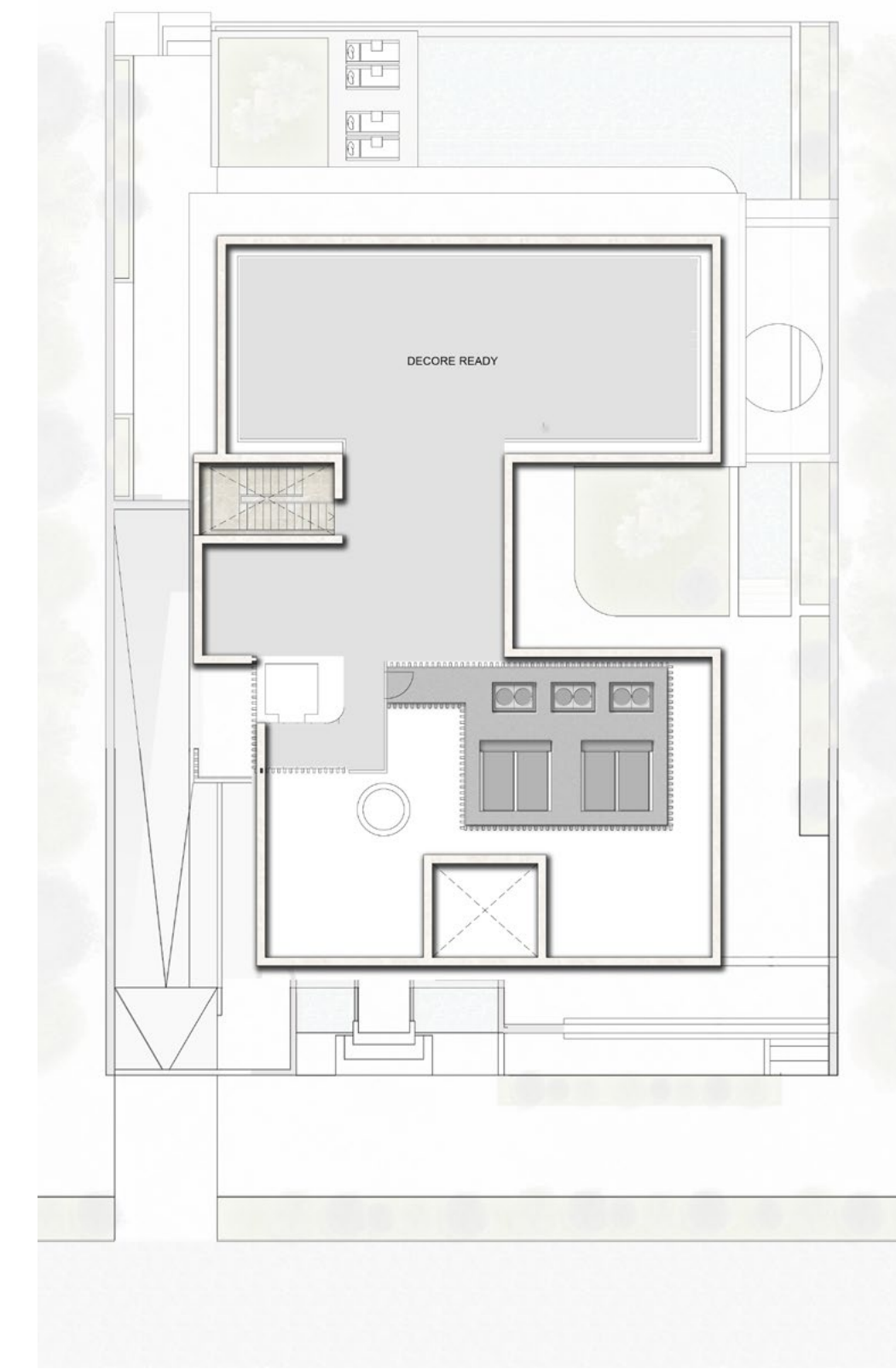
GROUND FLOOR
265 sqm / 2,850 sqft



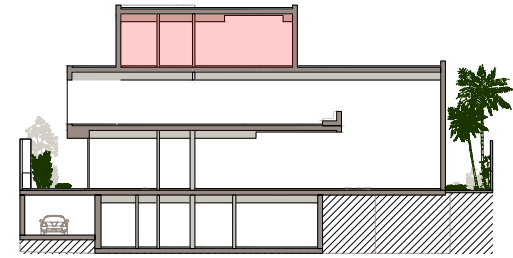
FIRST FLOOR
351 sqm / 3,782 sqft



ROOFTOP



ROOF



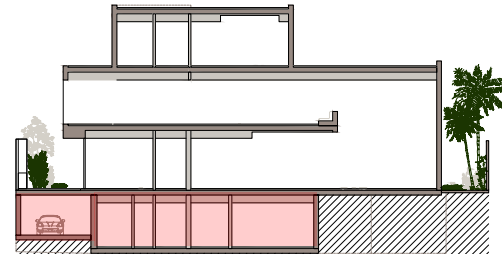
OPTION 1 - WELL-BEING



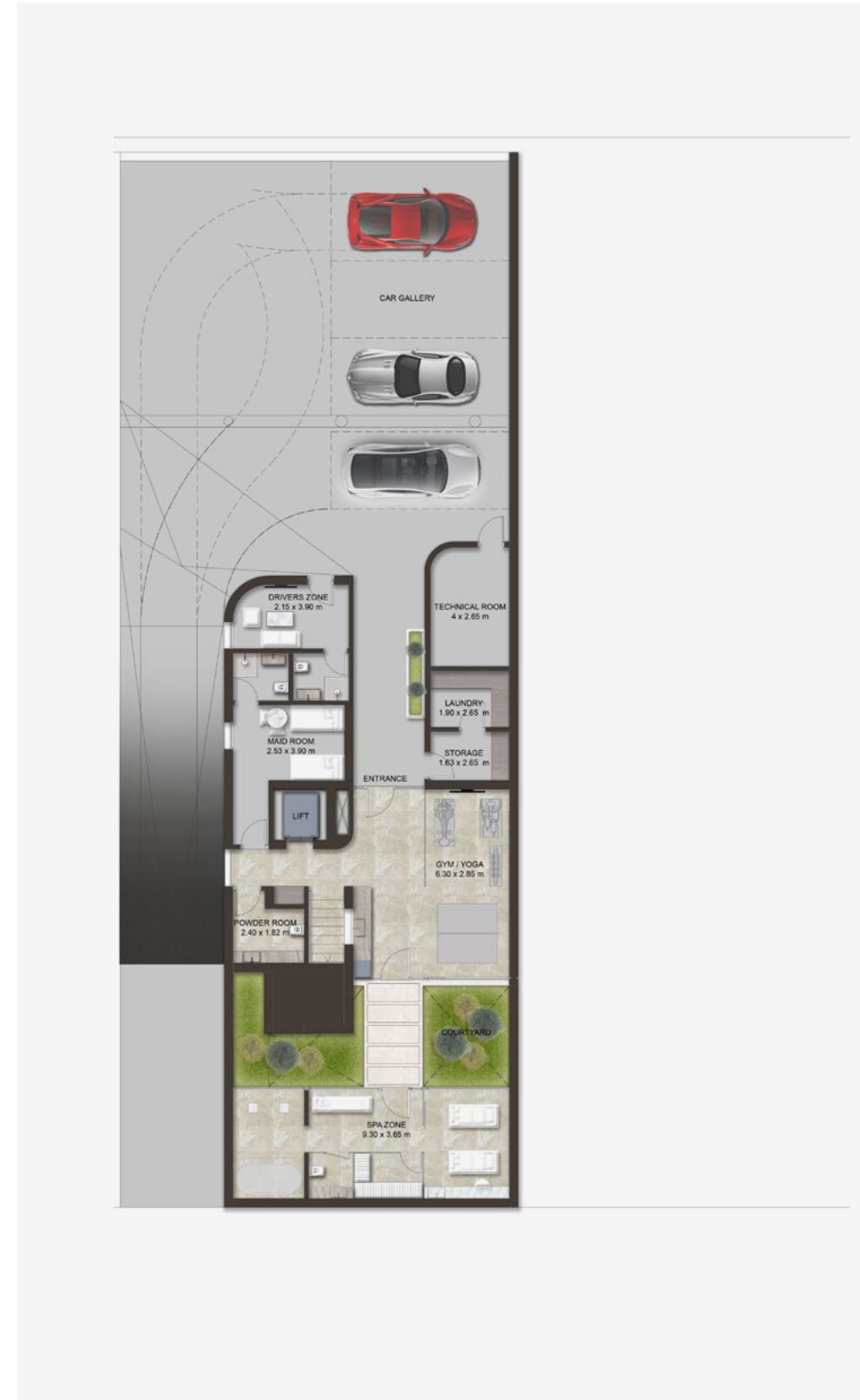
OPTION 2 - ENTERTAINMENT



BASEMENT



OPTION 1 - WELL-BEING
375 sqm / 4,040 sqft



OPTION 2 - ENTERTAINMENT
375 sqm / 4,040 sqft







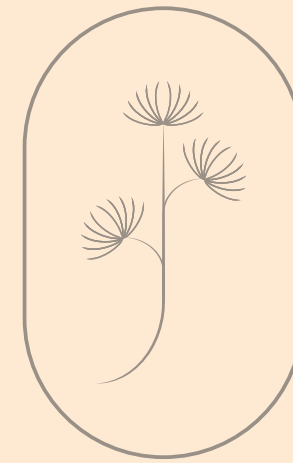








IRIS



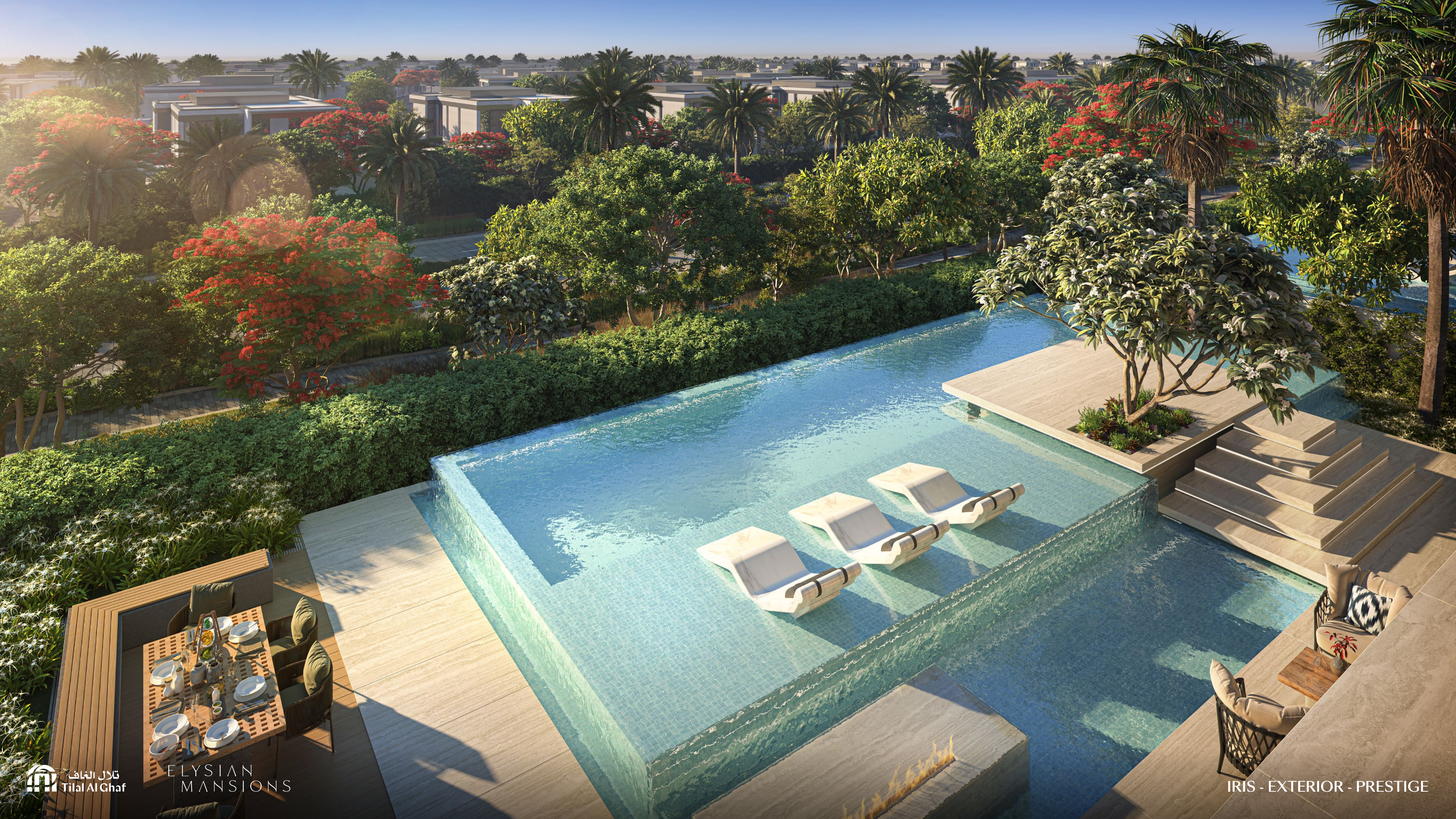












IRIS

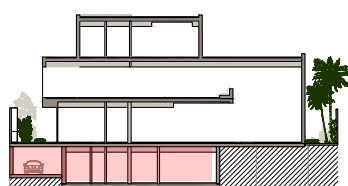
TYPE 1

Amenities

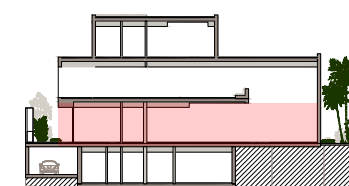
- Double Height Entry
- Double Height Spaces
- Private Home Elevator
- Underground Car Gallery
- Formal Living Area
- Two Family Living Areas
- Guest Suite
- His & Hers Walk in Closets
- Driver's Room
- Maid's Room

Internal Area	630 sqm / 6,777 sqft
Balcony/Terrace	47 sqm / 508 sqft
Garage	284 sqm / 3,059 sqft
Total Area	961 sqm / 10,344 sqft

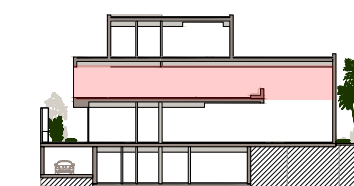
BASEMENT
437 sqm / 4,704 sqft



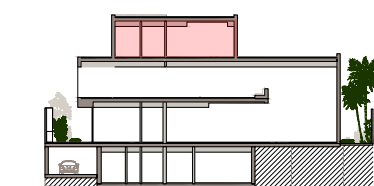
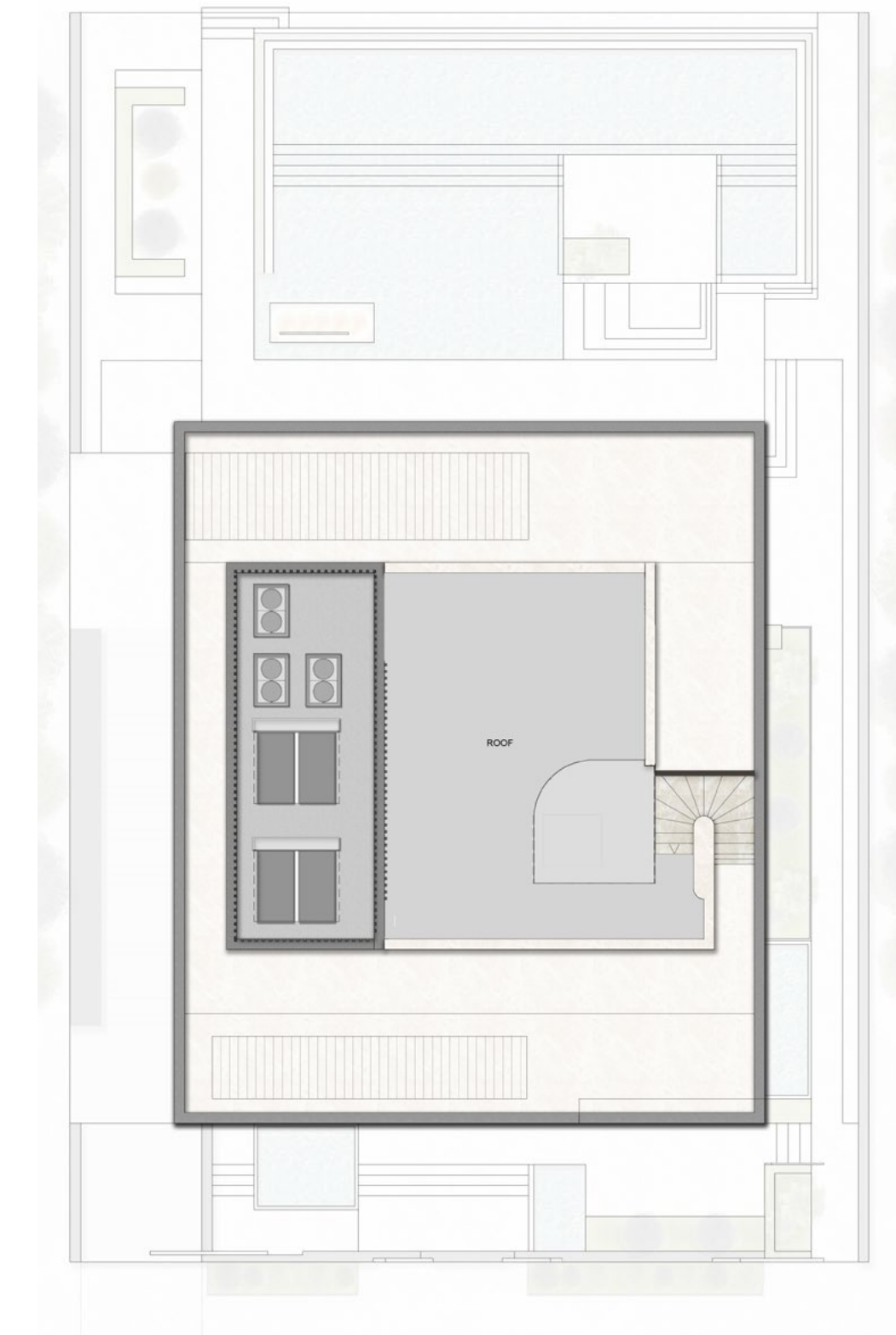
GROUND FLOOR
250 sqm / 2,689 sqft



FIRST FLOOR
274 sqm / 2,952 sqft



SECOND FLOOR - ROOFTOP



IRIS

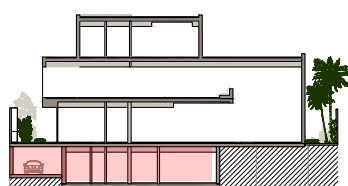
TYPE 2

Amenities

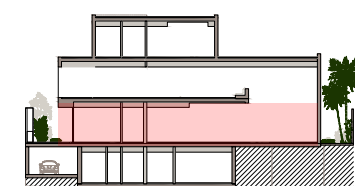
- Double Height Entry
- Double Height Spaces
- Private Home Elevator
- Underground Car Gallery
- Formal Living Area
- Two Family Living Areas
- Majlis
- His & Hers Walk in Closets
- Driver's Room
- Maid's Room

Internal Area	630 sqm / 6,777 sqft
Balcony/Terrace	47 sqm / 508 sqft
Garage	284 sqm / 3,059 sqft
Total Area	961 sqm / 10,344 sqft

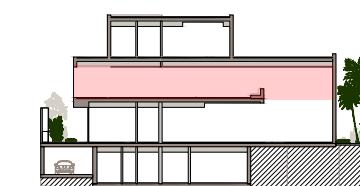
BASEMENT
437 sqm / 4,704 sqft



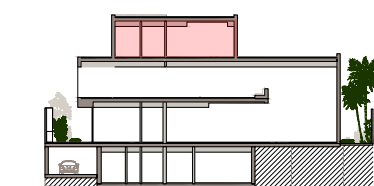
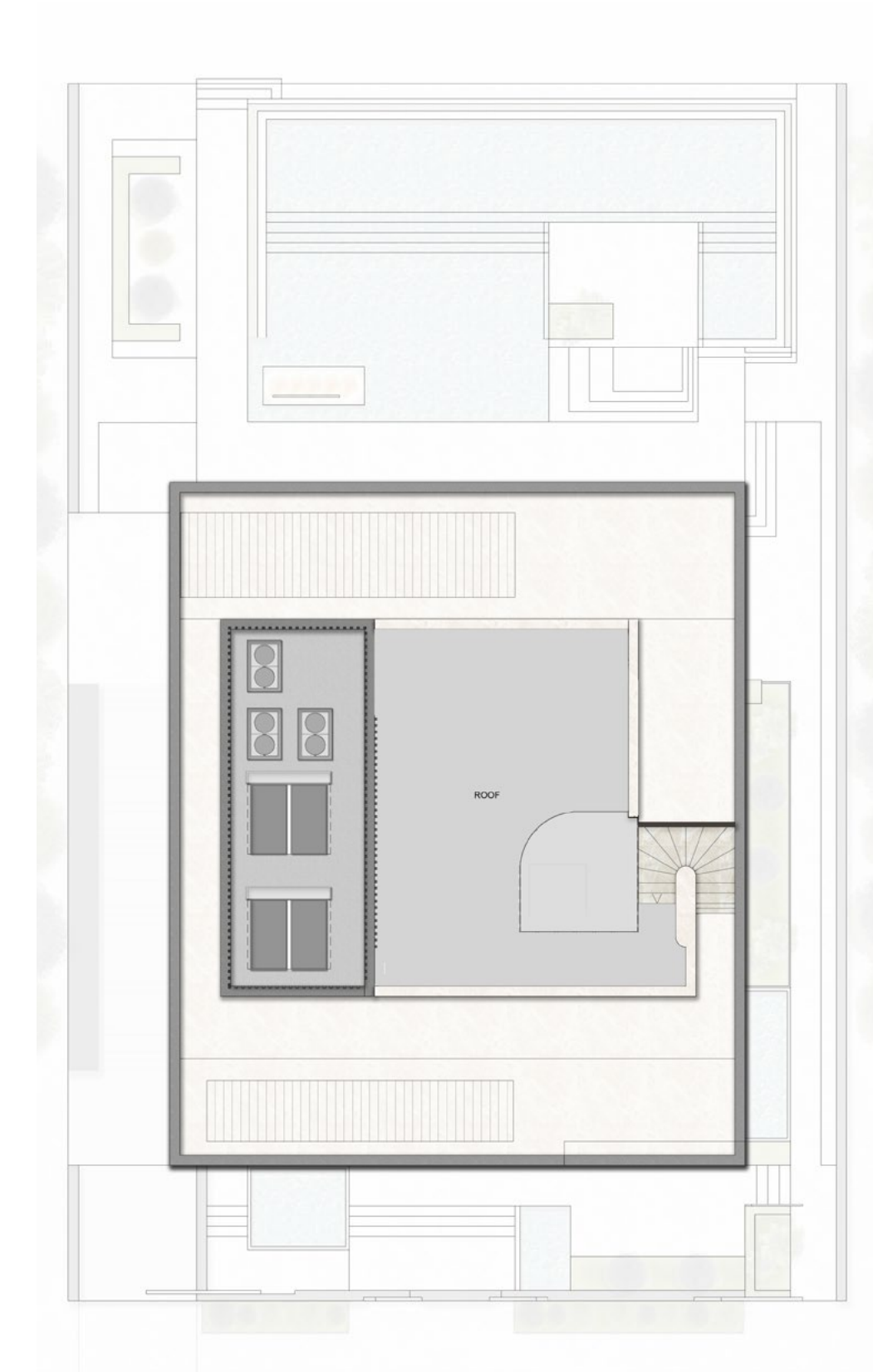
GROUND FLOOR
250 sqm / 2,689 sqft



FIRST FLOOR
274 sqm / 2,952 sqft



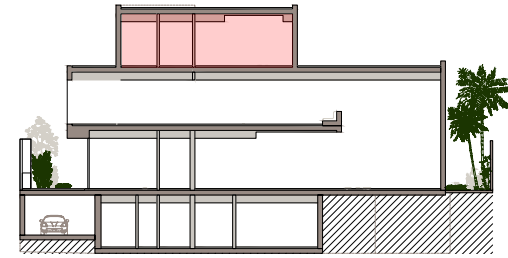
SECOND FLOOR - ROOFTOP



IRIS

UPGRADES

ROOF



OPTION 1 - ENTERTAINMENT



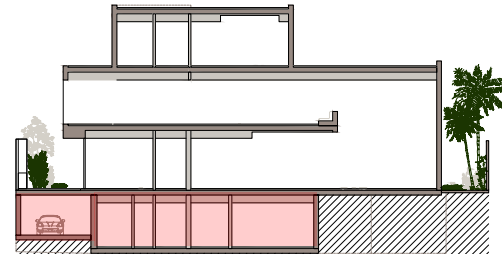
OPTION 2 - WELL-BEING



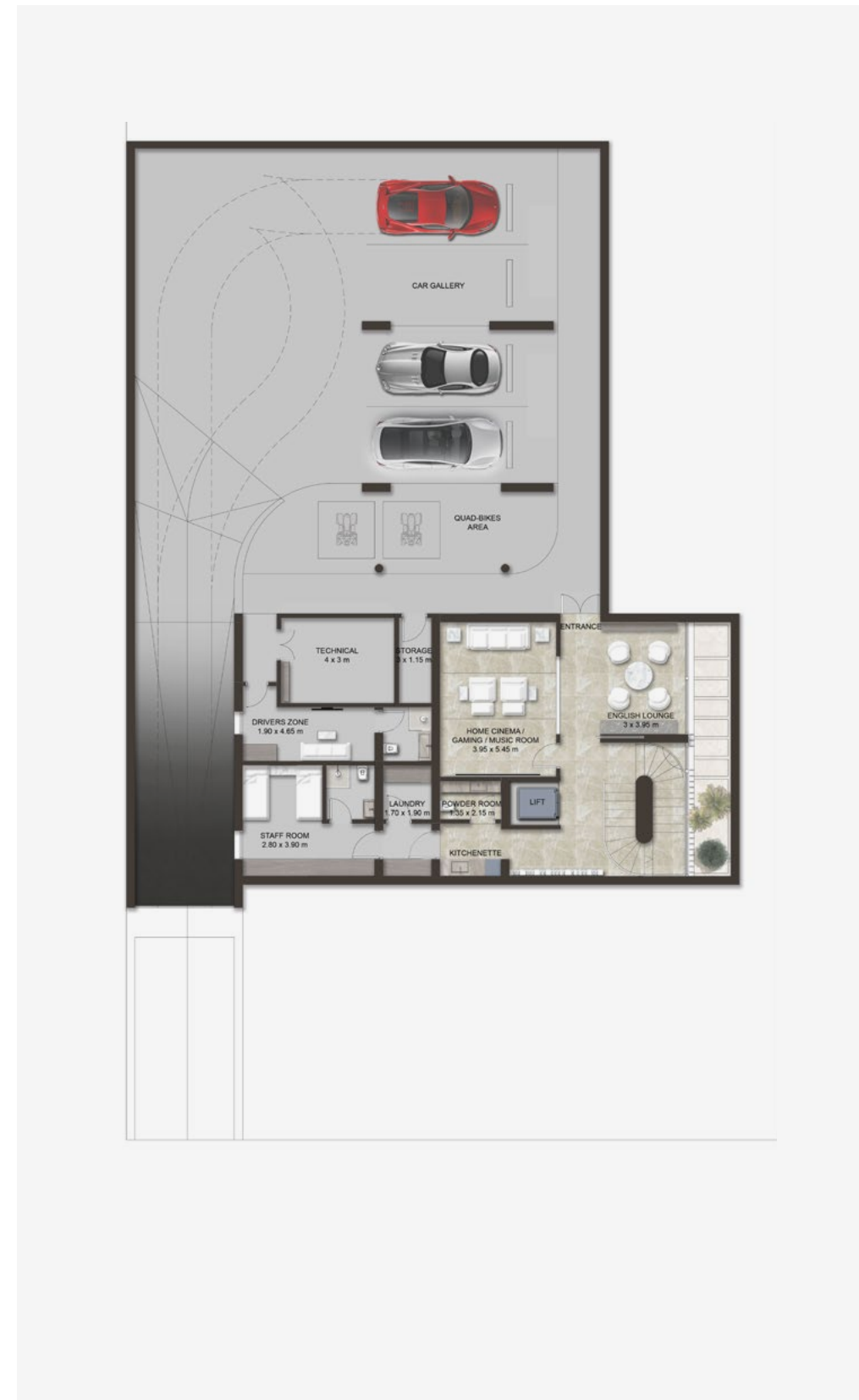
IRIS

UPGRADES

BASEMENT



OPTION 1 - ENTERTAINMENT
437 sqm / 4,704 sqft



OPTION 2 - WELL-BEING
437 sqm / 4,704 sqft













ELYSIAN MANSIONS