



SOBHA HARTLAND

CREEK VISTAS RESERVÉ

FLOOR & UNIT PLANS



YOUR HOME DOESN'T JUST
OVERLOOK THE CITY'S LEADING SIGHTS.
IT IS ONE!

The tower at Creek Vistas Reservé.



WHY DUBAI ?

Long Term Residency Visas are now granted for 2 years (for investment of AED 1mn), 5 years (for investment of AED 5mn) & 10 years (for investment of AED 10mn)

Real Estate in Dubai offers 8% feasible rental returns & incremental ROI as compared to 2-3% in New York or London

Dubai offers 143 sq. mt. of real estate space of \$1mn as compared to 31 sq. mt. space in New York or London

With Expo 2020 scheduled in Dubai, Dubai is going to become the literal center of the world

Dubai is one of the leading tax free economies of the world.

Strategically placed at the center of the world, Dubai makes it easier to travel anywhere.

Dubai continues to rank highest for quality of living across the Middle East as per Mercer Quality of Living Index 2019.

Most safest country in the world, beating popular holiday destinations like France, Italy, Singapore, the US and Thailand as per Khaleej Times in 2019.

One of the happiest countries in the world ahead of USA, Canada, Belgium and France, according to Boston Consulting Group (BCG) report 2019.



WHY HARTLAND ?

Located in MBR City, one of the leading investment destinations of the next center of Dubai

ROI of up to 8%

Sobha Signature Quality

An 8mn sq.ft. (183 acres) marquee development with 2.4mn sq. ft. of open and green spaces

8000+ trees across the community

1.8km boardwalk across the Dubai Canal

Proposed metro station at 2 minutes walking distance

WHY CREEK VISTAS RESERVÉ?



- The 1st two towers at Creek Vistas were sold out within 3 months of their launch.
- This tower is the most premium and the tallest building across the Creek Blvd St. in Sobha Hartland.
- The tower is an entry into the 8 million square feet Sobha Hartland community with about 2.4 million square feet dedicated for open & green spaces.
- The uninterrupted views of Downtown Dubai & Ras Al Khor Sanctuary will leave you spoilt for choice
- 2 international British curriculum schools are 2 minutes walking distance away
- Hartland shopping mall – the biggest mall in Sobha Hartland - is just next door

CELEBRATORY PRICING

1BR Starting from
AED 852,000

1BR+STUDY Starting from
AED 1,000,000

2BR Starting from
AED 1,300,000

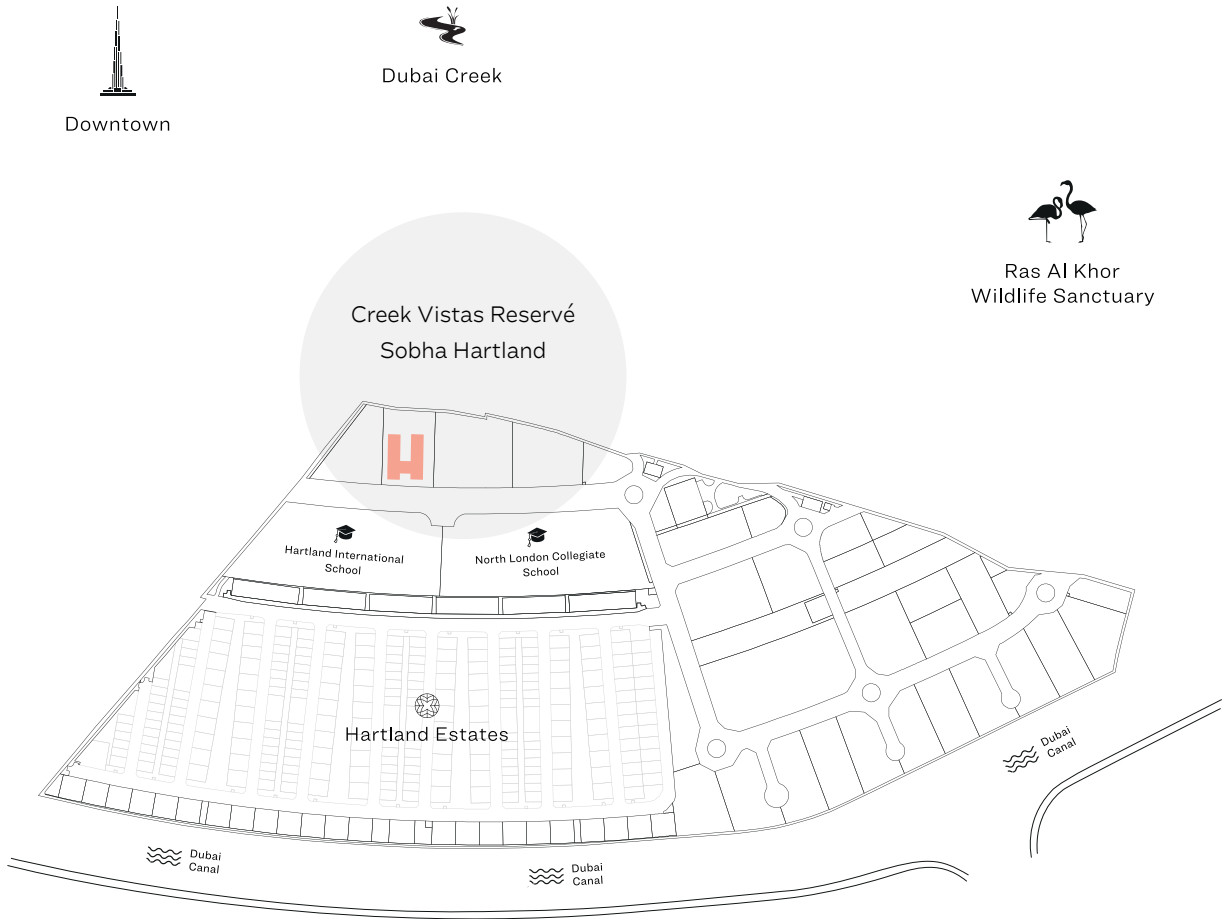
CELEBRATORY OFFERS




Guaranteed discount
vouchers of up to 30%
on school fees

**Hartland International school and
North London Collegiate school*

MASTER PLAN




Meydan One Mall


Meydan Racecourse



APARTMENT FEATURES



Variety of
unit plans



Impeccable
interiors



Covered
car parking



Choice of
balcony in units



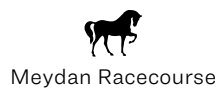
Bedroom
wardrobe in all units

A RICH TAPESTRY OF EXPERIENCES. A WORLD-CLASS LIFESTYLE.

The amenities being introduced are completely unique and available only for residents of this brand new tower.

-  1 BEDROOM
-  2 BEDROOM

For different unit types, please refer to the unit plans in further pages.



1 BEDROOM APARTMENT

TYPE A (with balcony)

Downtown and Meydan One Mall view

Suite area - 439.06 Sq.Ft. (40.8 Sq. M.)

Balcony Area - 49.30 Sq.Ft. (4.6 Sq. M.)

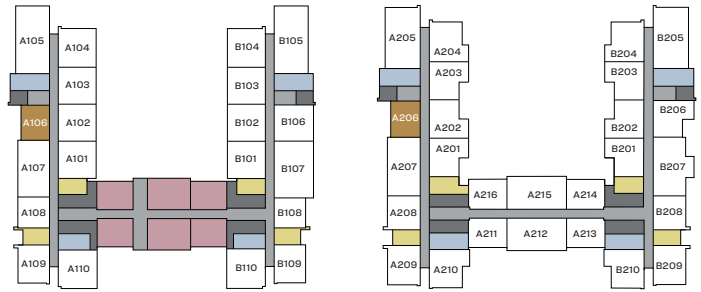
Net Saleable Area - 488.36 Sq.Ft. (45.4 Sq. M.)

List of unit numbers* with the below unit plan:

A106, A206, A306, A406, A506, A606, A706, A806, A906, A1006, A1106, A1206, A1306, A1406, A1506, A1606, A1706, A1806, A1906, A2006, A2106, A2206, A2306, A2406, A2506, A2606, A2706, A2806, A2906, A3006, A3106, A3206, A3306

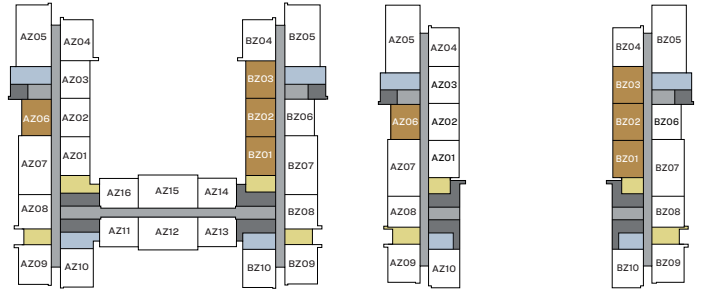
B301, B401, B501, B601, B701, B801, B901, B1001, B1101, B1201, B1301, B1401, B1501, B1601, B1701, B1801, B1901, B2001, B2101, B2201, B2301, B2401, B2501, B2601, B2701, B2801, B2901, B3001, B3101, B3201, B3301, B302, B402, B502, B602, B702, B802, B902, B1002, B1102, B1202, B1302, B1402, B1502, B1602, B1702, B1802, B1902, B2002, B2102, B2202, B2302, B2402, B2502, B2602, B2702, B2802, B2902, B3002, B3102, B3202, B3302, B303, B403, B503, B603, B703, B803, B903, B1003, B1103, B1203, B1303, B1403, B1503, B1603, B1703, B1803, B1903, B2003, B2103, B2203, B2303, B2403, B2503, B2603, B2703, B2803, B2903, B3003, B3103, B3203, B3303

*Subject to availability.



Level 01

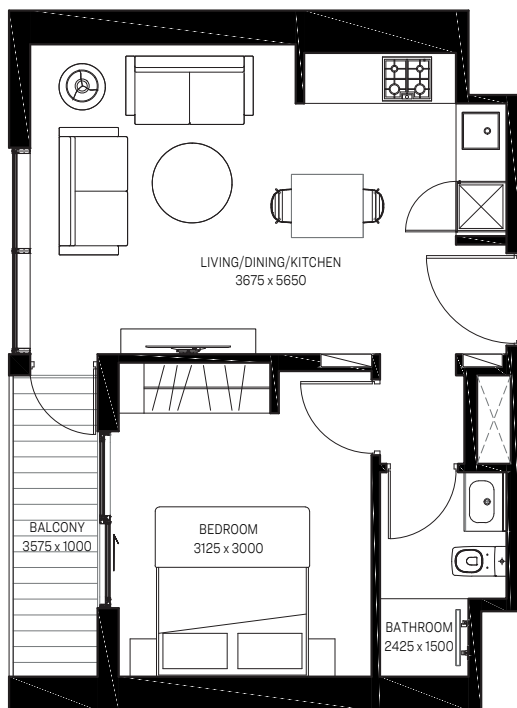
Level 02



Level 03-21

Level 22-33

■ UNITS



Meydan One Mall

Disclaimer: 1. All dimensions are in metric, measured to wall finishes. 2. All materials, dimensions & drawings are approximate. 3. Information is subject to change without notice, at developer's absolute discretion. 4. Actual area may vary from the stated area. 5. Drawing are not to scale. 6. All images used are for illustrative purpose only and do not represent the actual size, features, specifications, fittings and furnishings. 7. The developer reserves the right to make revisions/ alterations, at its absolute discretion, without any liability whatsoever.

1 BEDROOM APARTMENT

TYPE A (with balcony)

Dubai Creek, Ras Al Khor Wildlife Sanctuary and Dubai Canal view

Suite area - 439.06 Sq.Ft. (40.8 Sq. M.)

Balcony Area - 49.30 Sq.Ft. (4.6 Sq. M.)

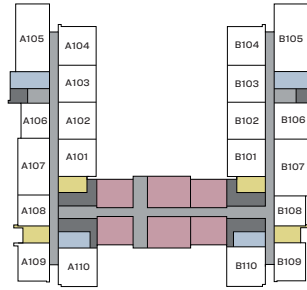
Net Saleable Area - 488.36 Sq.Ft. (45.4 Sq. M.)

List of unit numbers* with the below unit plan:

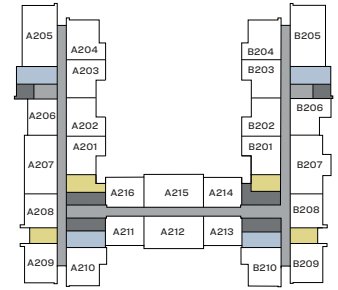
A301, A401, A501, A601, A701, A801, A901, A1001, A1101, A1201, A1301, A1401, A1501, A1601, A1701, A1801, A1901, A2001, A2101, A2201, A2301, A2401, A2501, A2601, A2701, A2801, A2901, A3001, A3101, A3201, A3301, A302, A402, A502, A602, A702, A802, A902, A1002, A1102, A1202, A1302, A1402, A1502, A1602, A1702, A1802, A1902, A2002, A2102, A2202, A2302, A2402, A2502, A2602, A2702, A2802, A2902, A3002, A3102, A3202, A3302, A303, A403, A503, A603, A703, A803, A903, A1003, A1103, A1203, A1303, A1403, A1503, A1603, A1703, A1803, A1903, A2003, A2103, A2203, A2303, A2403, A2503, A2603, A2703, A2803, A2903, A3003, A3103, A3203, A3303

B306, B406, B506, B606, B706, B806, B906, B1006, B1106, B1206, B1306, B1406, B1506, B1606, B1706, B1806, B1906, B2006, B2106, B2206, B2306, B2406, B2506, B2606, B2706, B2806, B2906, B3006, B3106, B3206, B3306

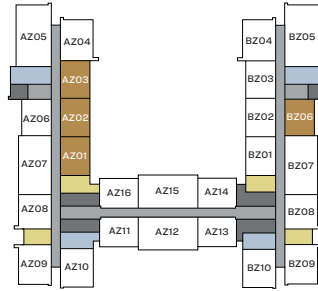
*Subject to availability.



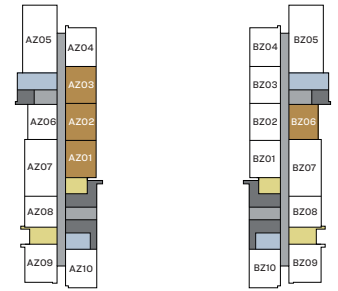
Level 01



Level 02



Level 03-21



Level 22-33

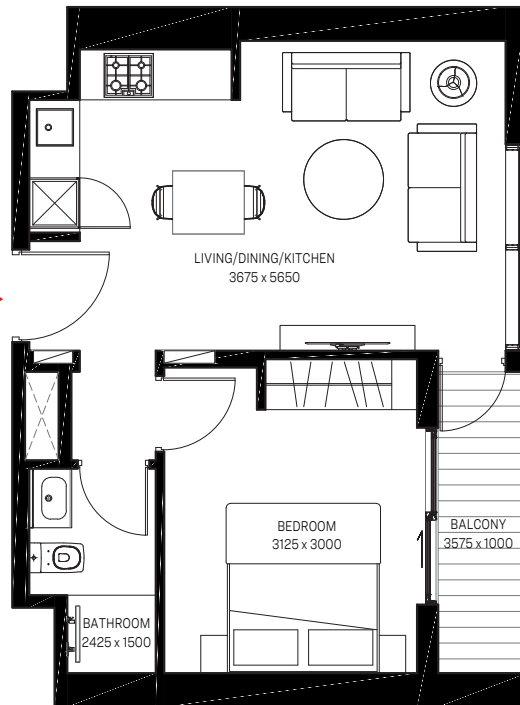
■ UNITS



Dubai Creek



Ras Al Khor
Wildlife Sanctuary



Dubai Canal

Disclaimer: 1. All dimensions are in metric, measured to wall finishes. 2. All materials, dimensions & drawings are approximate. 3. Information is subject to change without notice, at developer's absolute discretion. 4. Actual area may vary from the stated area. 5. Drawing are not to scale. 6. All images used are for illustrative purpose only and do not represent the actual size, features, specifications, fittings and furnishings. 7. The developer reserves the right to make revisions/ alterations, at its absolute discretion, without any liability whatsoever.

1 BEDROOM APARTMENT

TYPE A (with balcony)

Dubai Creek view

Suite area - 439.06 Sq.Ft. (40.8 Sq. M.)

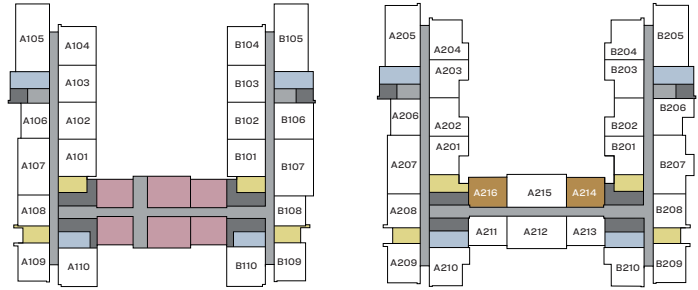
Balcony Area - 49.30 Sq.Ft. (4.6 Sq. M.)

Net Saleable Area - 488.36 Sq.Ft. (45.4 Sq. M.)

List of unit numbers* with the below unit plan:

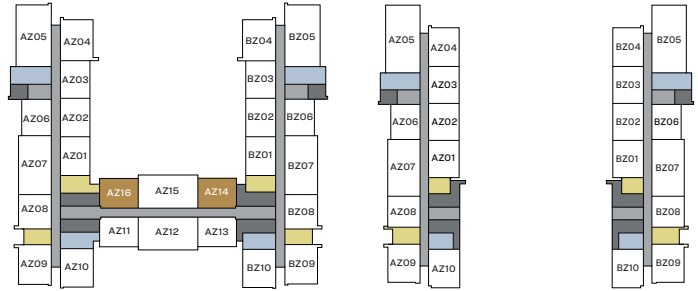
A214, A216, A314, A316, A414, A416, A514, A516, A614, A616, A714, A716, A814, A816, A914, A916, A1014, A1016, A1114, A1116, A1214, A1216, A1314, A1316, A1414, A1416, A1514, A1516, A1614, A1616, A1714, A1716, A1814, A1816, A1914, A1916, A2014, A2016, A2114, A2116

*Subject to availability.



Level 01

Level 02



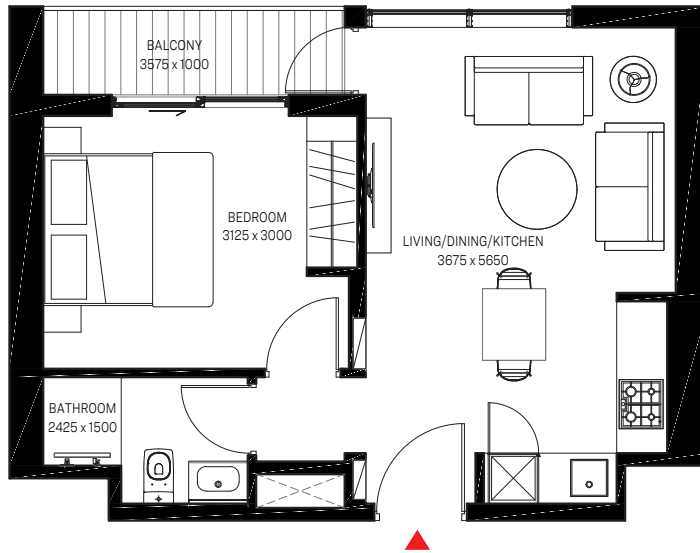
Level 03-21

Level 22-33

■ UNITS



Dubai Creek



1 BEDROOM APARTMENT

TYPE A (with balcony)

Meydan One Mall, Hartland Estates and Dubai Canal view

Suite area - 439.06 Sq.Ft. (40.8 Sq. M.)

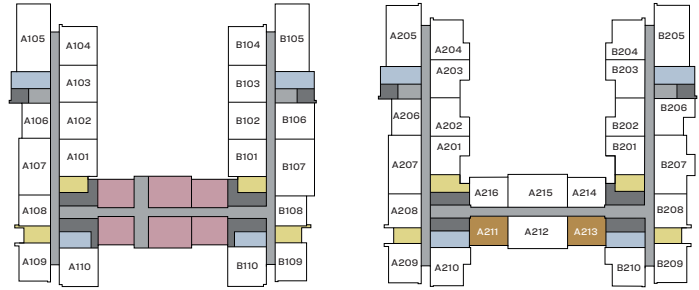
Balcony Area - 49.30 Sq.Ft. (4.6 Sq. M.)

Net Saleable Area - 488.36 Sq.Ft. (45.4 Sq. M.)

List of unit numbers* with the below unit plan:

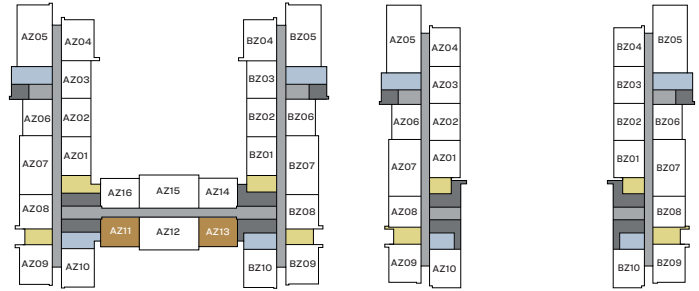
A211, A213, A311, A313, A411, A413, A511, A513, A611, A613, A711, A713, A811, A813, A911, A913, A1011, A1013, A1111, A1113, A1211, A1213, A1311, A1313, A1411, A1413, A1511, A1513, A1611, A1613, A1711, A1713, A1811, A1813, A1911, A1913, A2011, A2013, A2111, A2113

*Subject to availability.



Level 01

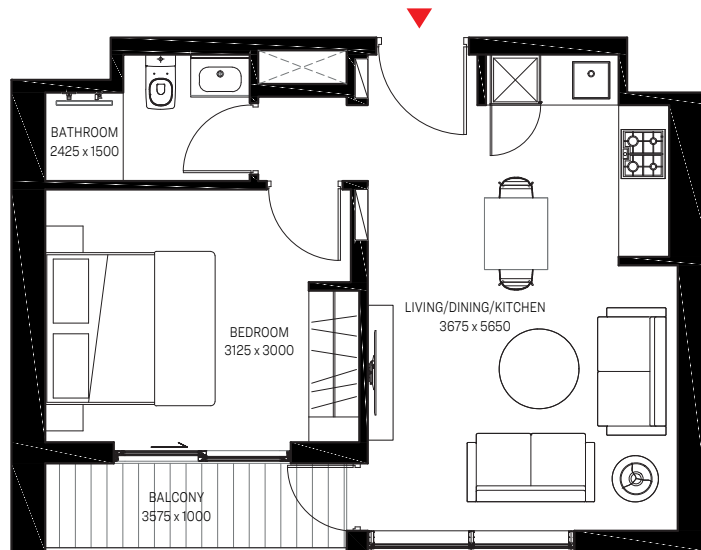
Level 02



Level 03-21

Level 22-33

■ UNITS



Hartland Estates



Meydan One Mall



Dubai Canal

1 BEDROOM APARTMENT

TYPE A1 (with terrace)

Dubai Creek and Ras Al Khor Wildlife Sanctuary view

Suite area - 439.06 Sq.Ft. (40.7 Sq. M.)

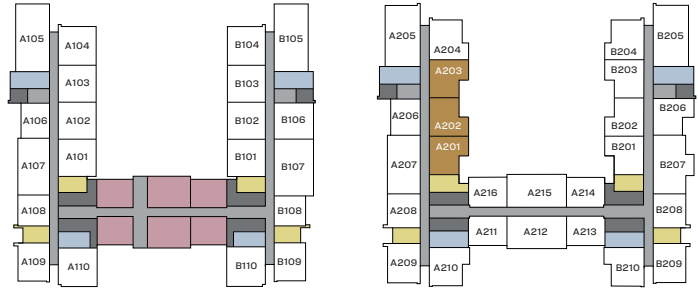
Terrace Area - 135.4 Sq.Ft. (12.6 Sq. M.)

Net Saleable Area - 574.47 Sq.Ft. (53.3 Sq. M.)

List of unit numbers* with the below unit plan:

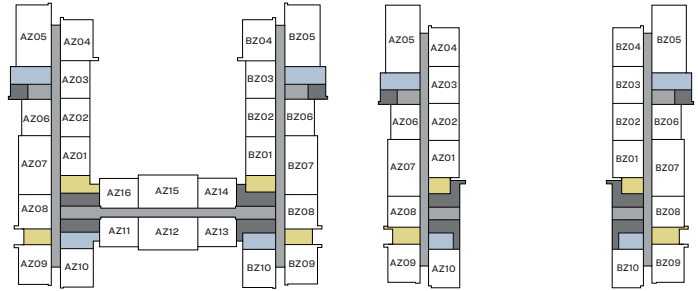
A201, A202, A203

*Subject to availability.



Level 01

Level 02



Level 03-21

Level 22-33

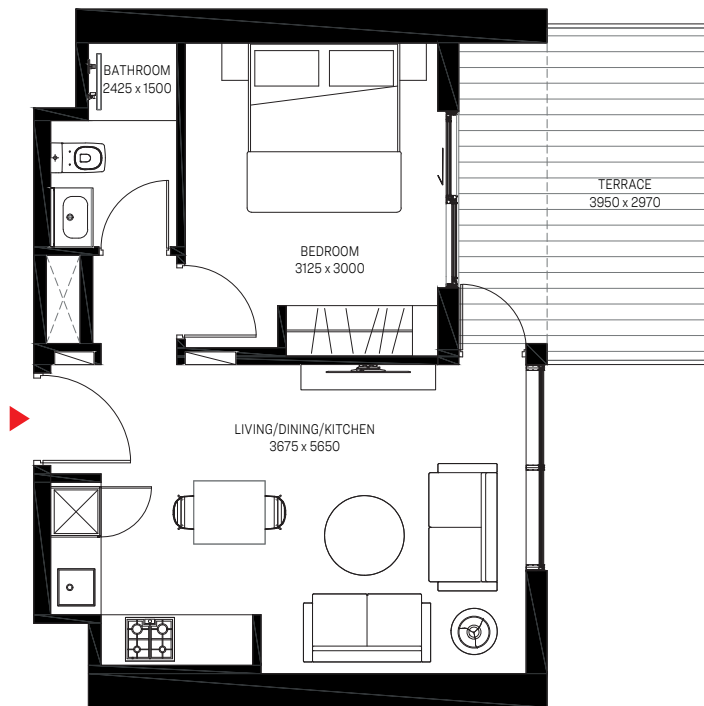
■ UNITS



Dubai Creek



Ras Al Khor
Wildlife Sanctuary



1 BEDROOM APARTMENT

TYPE A1 (with terrace)

Downtown and Dubai Creek view

Suite area - 439.06 Sq.Ft. (40.7 Sq. M.)

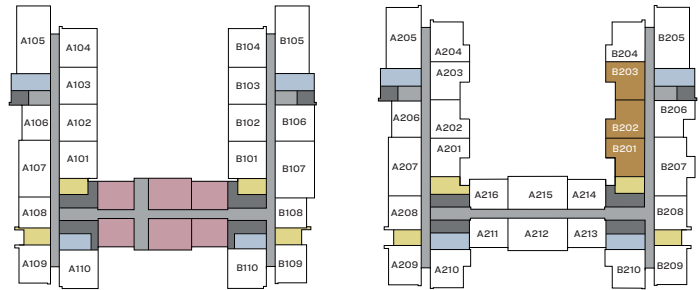
Terrace Area - 135.4 Sq.Ft. (12.6 Sq. M.)

Net Saleable Area - 574.47 Sq.Ft. (53.3 Sq. M.)

List of unit numbers* with the below unit plan:

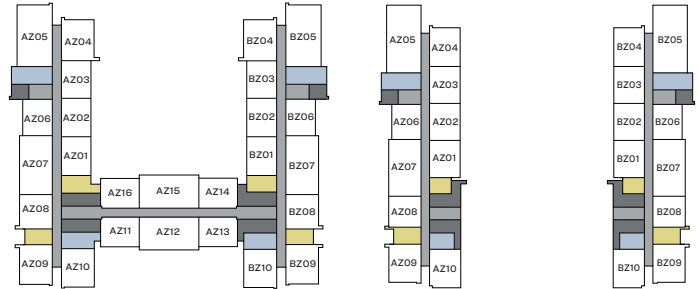
B201, B202, B203

*Subject to availability.



Level 01

Level 02



Level 03-21

Level 22-33

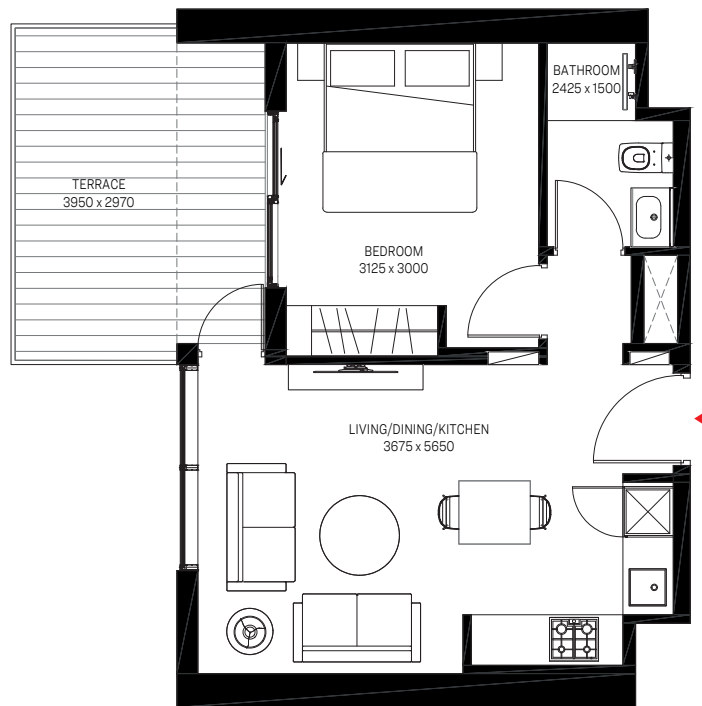
■ UNITS



Downtown



Dubai Creek



1 BEDROOM APARTMENT

TYPE A2 (with terrace)

Dubai Creek and Ras Al Khor Wildlife Sanctuary view

Suite area - 439.06 Sq.Ft. (40.7 Sq. M.)

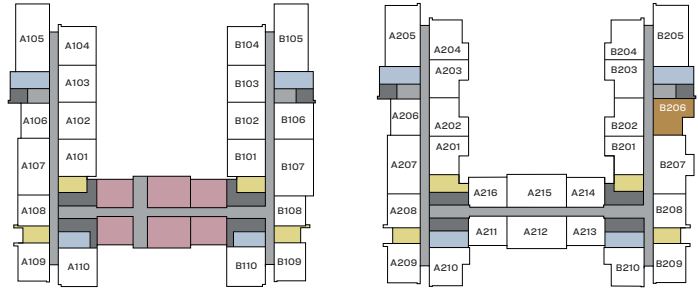
Terrace Area - 149.1 Sq.Ft. (13.8 Sq. M.)

Net Saleable Area - 588.14 Sq.Ft. (54.6 Sq. M.)

List of unit numbers* with the below unit plan:

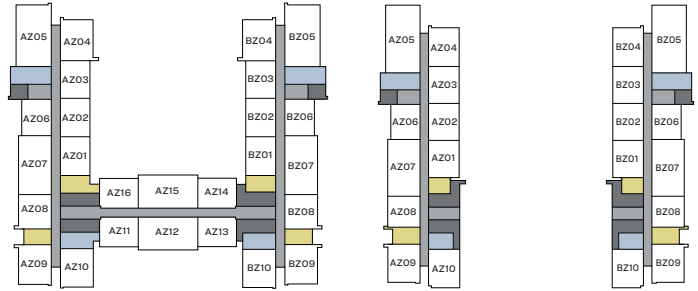
B206

*Subject to availability.



Level 01

Level 02



Level 03-21

Level 22-33

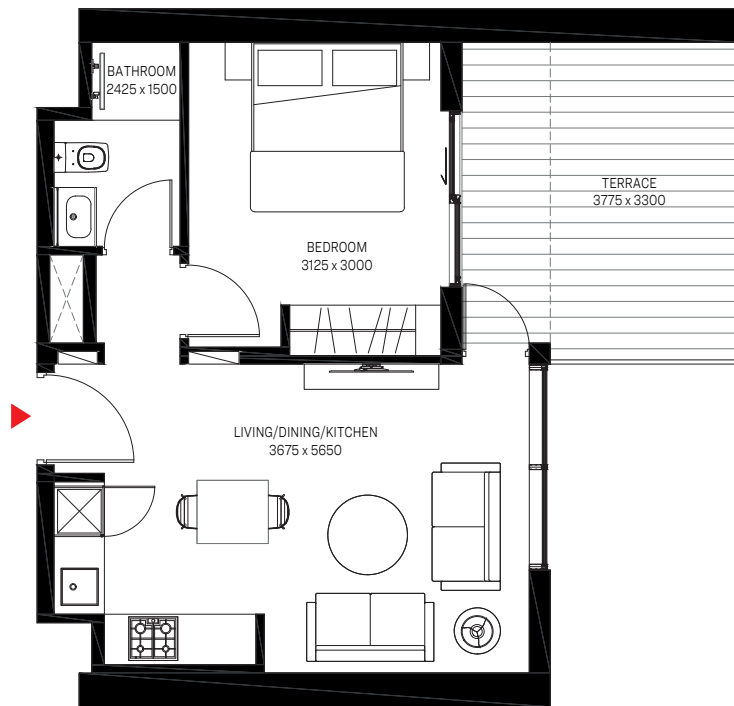
■ UNITS



Dubai Creek



Ras Al Khor
Wildlife Sanctuary



1 BEDROOM APARTMENT

TYPE B (with balcony)

Downtown, Meydan One Mall, Meydan Racecourse, Hartland Estates, Dubai Canal and Ras Al Khor Wildlife Sanctuary view

Suite area - 448.21 Sq.Ft. (41.6 Sq. M.)

Balcony Area - 88.16 Sq.Ft. (8.1 Sq. M.)

Net Saleable Area - 536.37 Sq.Ft. (49.8 Sq. M.)

List of unit numbers* with the below unit plan:

A109, A209, A309, A409, A509, A609, A709, A809, A909, A1009, A1109, A1209, A1309, A1409, A1509, A1609, A1709, A1809, A1909, A2009, A2109, A2209, A2309, A2409, A2509, A2609, A2709, A2809, A2909, A3009, A3109, A3209, A3309

B310, B410, B510, B610, B710, B810, B910, B1010, B1110, B1210, B1310, B1410, B1510, B1610, B1710, B1810, B1910, B2010, B2110, B2210, B2310, B2410, B2510, B2610, B2710, B2810, B2910, B3010, B3110, B3210, B3310

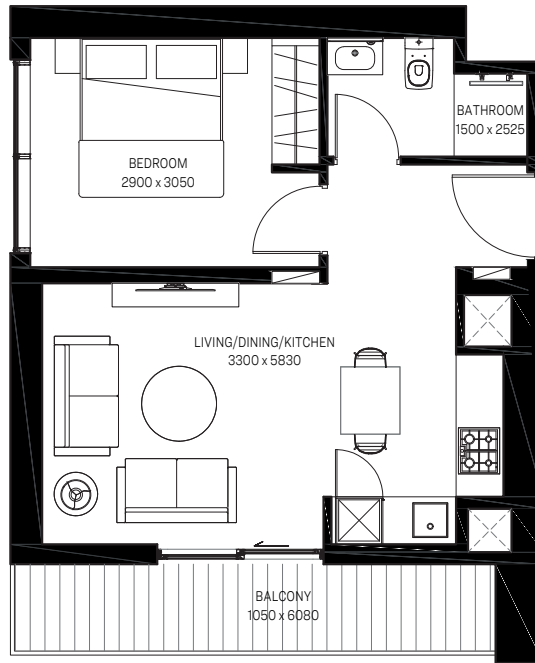
*Subject to availability.



Downtown



Meydan One Mall



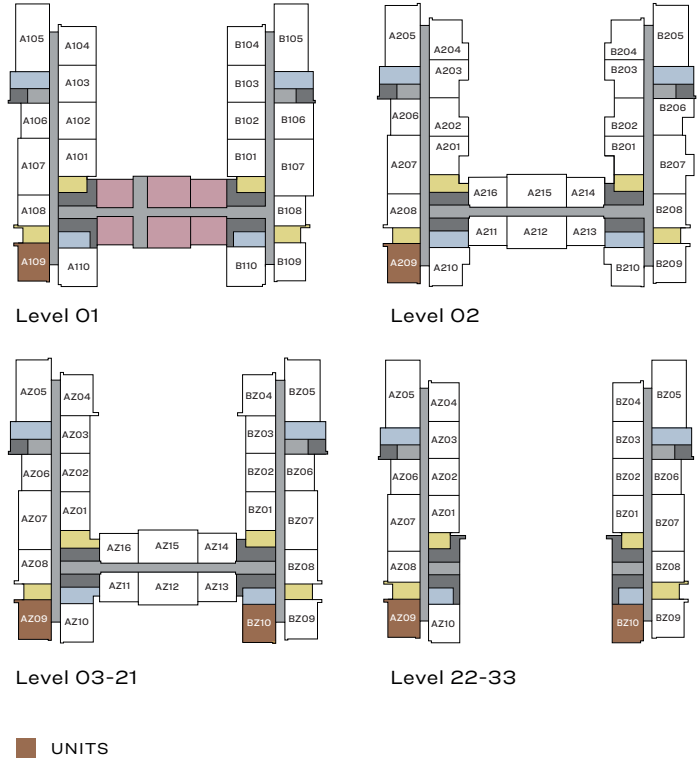
Hartland Estates



Dubai Canal



Meydan Racecourse



1 BEDROOM APARTMENT

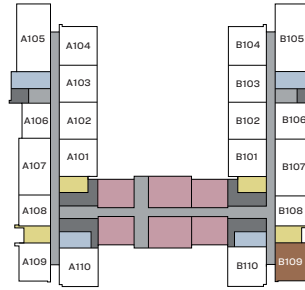
TYPE B (with balcony)

Hartland Estates, Meydan Racecourse and Dubai Canal view

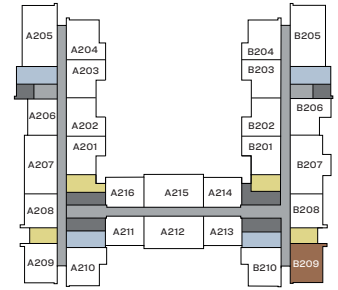
Suite area - 448.21 Sq.Ft.

Balcony Area - 88.16 Sq.Ft.

Net Saleable Area - 536.37 Sq.Ft.



Level 01

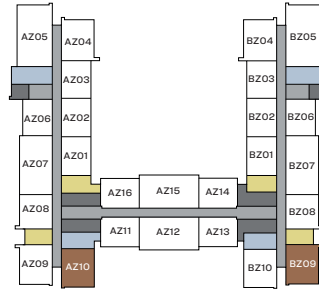


Level 02

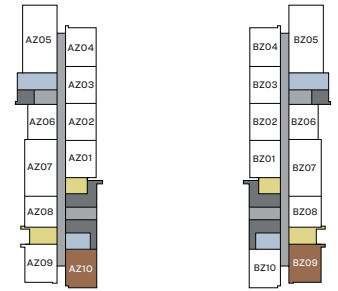
List of unit numbers* with the below unit plan:

B109, B209, B309, B409, B509, B609, B709, B809, B909, B1009, B1109, B1209, B1309, B1409, B1509, B1609, B1709, B1809, B1909, B2009, B2109, B2209, B2309, B2409, B2509, B2609, B2709, B2809, B2909, B3009, B3109, B3209, B3309

A310, A410, A510, A610, A710, A810, A910, A1010, A1110, A1210, A1310, A1410, A1510, A1610, A1710, A1810, A1910, A2010, A2110, A2210, A2310, A2410, A2510, A2610, A2710, A2810, A2910, A3010, A3110, A3210, A3310



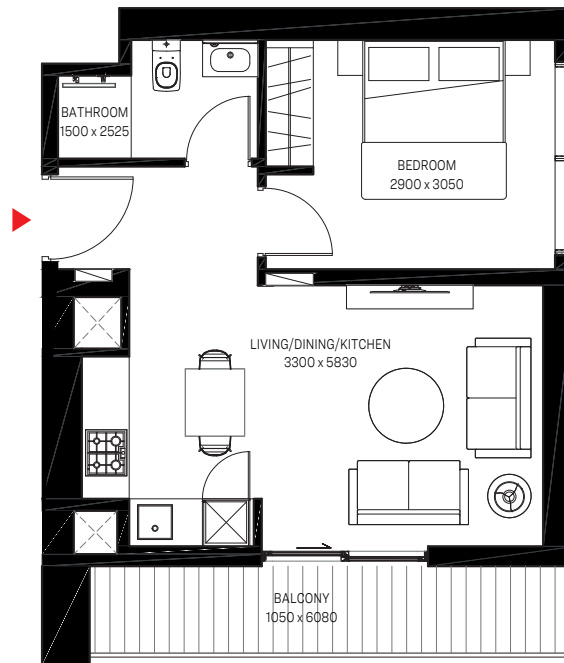
Level 03-21



Level 22-33

■ UNITS

*Subject to availability.



Hartland Estates



Dubai Canal



Meydan Racecourse

Disclaimer: 1. All dimensions are in metric, measured to wall finishes. 2. All materials, dimensions & drawings are approximate. 3. Information is subject to change without notice, at developer's absolute discretion. 4. Actual area may vary from the stated area. 5. Drawing are not to scale. 6. All images used are for illustrative purpose only and do not represent the actual size, features, specifications, fittings and furnishings. 7. The developer reserves the right to make revisions/ alterations, at its absolute discretion, without any liability whatsoever.

1 BEDROOM APARTMENT

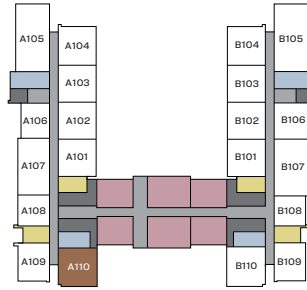
TYPE B1 (with yard)

Hartland Estates, Meydan Racecourse,, Dubai Canal and Ras Al Khor Wildlife Sanctuary view

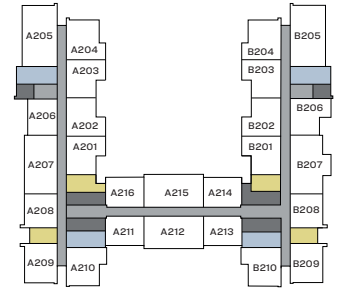
Suite area - 501.28 Sq.Ft. (46.57 Sq. M.)

Yard Area - 209.04 Sq.Ft. (19.42 Sq. M.)

Net Saleable Area - 536.37 Sq.Ft. (65.99 Sq. M.)



Level 01

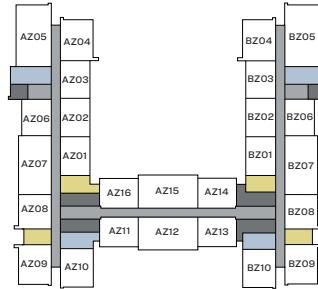


Level 02

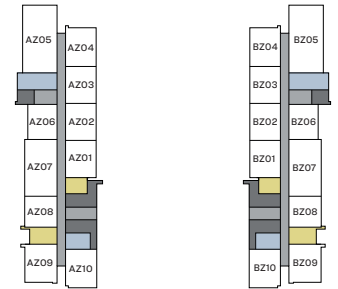
List of unit numbers* with the below unit plan:

A110

*Subject to availability.



Level 03-21

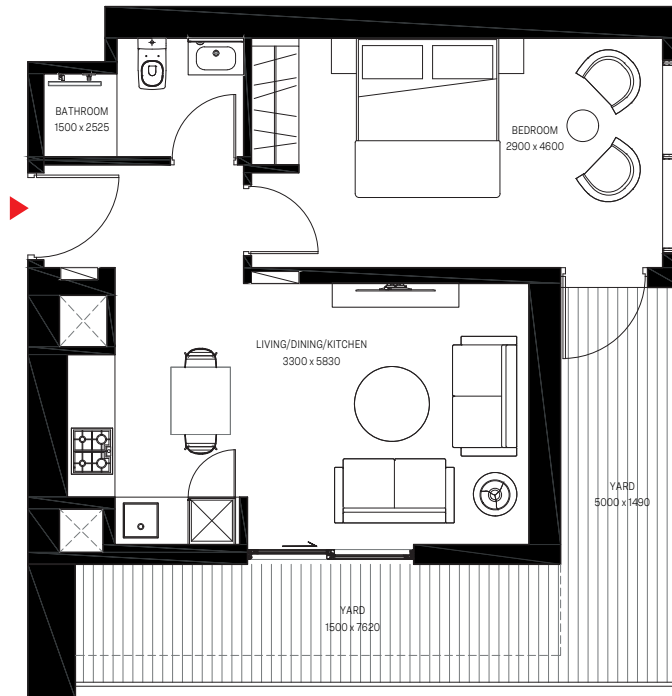


Level 22-33

■ UNITS



Ras Al Khor
Wildlife Sanctuary



Hartland Estates



Dubai Canal



Meydan Racecourse

Disclaimer: 1. All dimensions are in metric, measured to wall finishes. 2. All materials, dimensions & drawings are approximate. 3. Information is subject to change without notice, at developer's absolute discretion. 4. Actual area may vary from the stated area. 5. Drawing are not to scale. 6. All images used are for illustrative purpose only and do not represent the actual size, features, specifications, fittings and furnishings. 7. The developer reserves the right to make revisions/ alterations, at its absolute discretion, without any liability whatsoever.

1 BEDROOM APARTMENT

TYPE B1 (with yard)

Meydan One Mall, Hartland Estates,
Meydan Racecourse and Dubai Canal view

Suite area - 501.28 Sq.Ft. (46.57 Sq. M.)

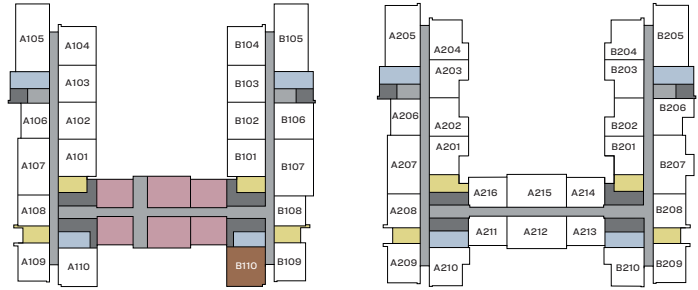
Yard Area - 209.04 Sq.Ft. (19.42 Sq. M.)

Net Saleable Area - 536.37 Sq.Ft. (65.99 Sq. M.)

List of unit numbers* with the below unit plan:

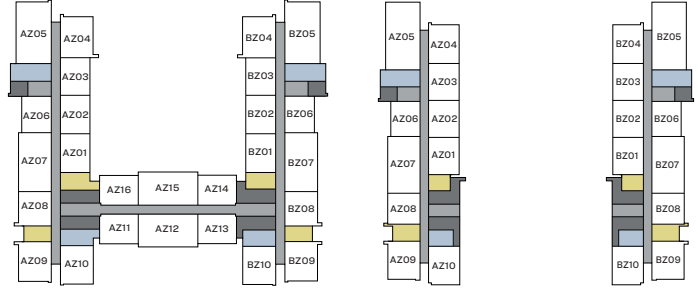
B110

*Subject to availability.



Level 01

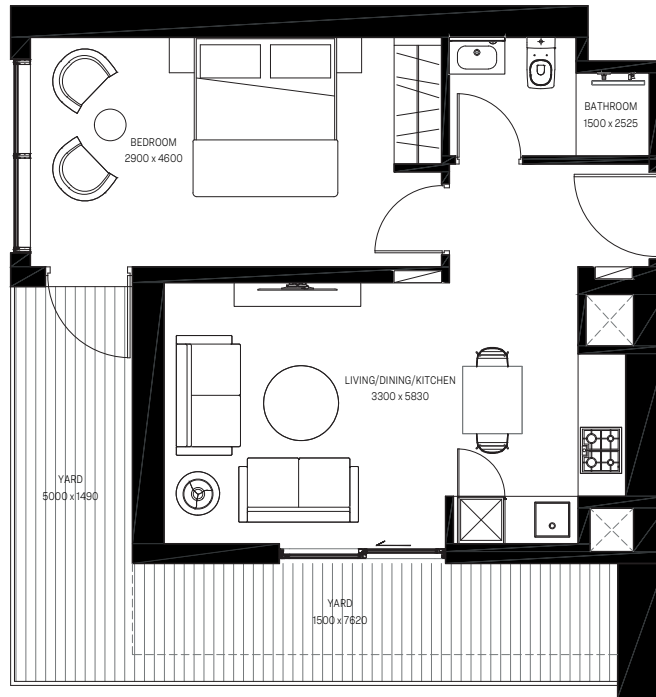
Level 02



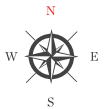
Level 03-21

Level 22-33

■ UNITS



Meydan One Mall



Hartland Estates



Dubai Canal



Meydan Racecourse

Disclaimer: 1. All dimensions are in metric, measured to wall finishes. 2. All materials, dimensions & drawings are approximate. 3. Information is subject to change without notice, at developer's absolute discretion. 4. Actual area may vary from the stated area. 5. Drawing are not to scale. 6. All images used are for illustrative purpose only and do not represent the actual size, features, specifications, fittings and furnishings. 7. The developer reserves the right to make revisions/ alterations, at its absolute discretion, without any liability whatsoever.

1 BEDROOM APARTMENT

TYPE B2 (with terrace and balcony)

Meydan One Mall, Hartland Estates,
Meydan Racecourse and Dubai Canal view

Suite area - 448.42 Sq.Ft. (41.6 Sq. M.)

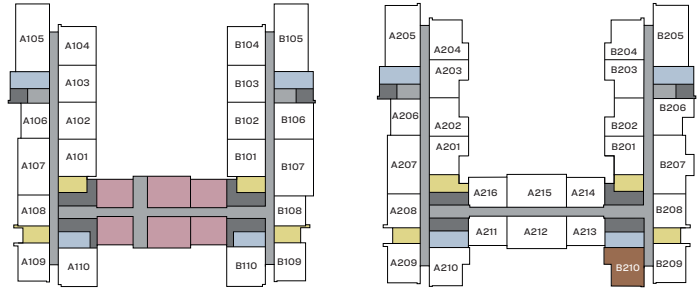
Terrace Area - 151.34 Sq.Ft. (14.0 Sq. M.)

Net Saleable Area - 599.77 Sq.Ft. (55.7 Sq. M.)

List of unit numbers* with the below unit plan:

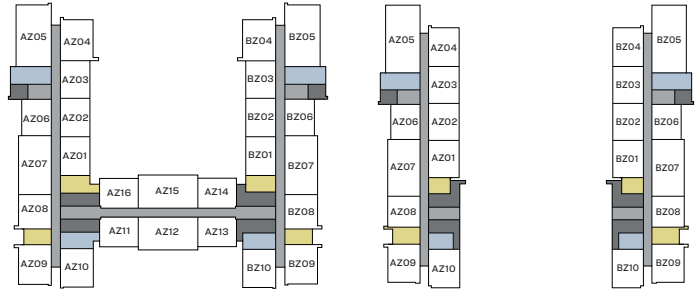
B210

*Subject to availability.



Level 01

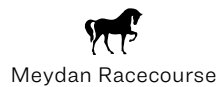
Level 02



Level 03-21

Level 22-33

■ UNITS



Disclaimer: 1. All dimensions are in metric, measured to wall finishes. 2. All materials, dimensions & drawings are approximate. 3. Information is subject to change without notice, at developer's absolute discretion. 4. Actual area may vary from the stated area. 5. Drawing are not to scale. 6. All images used are for illustrative purpose only and do not represent the actual size, features, specifications, fittings and furnishings. 7. The developer reserves the right to make revisions/ alterations, at its absolute discretion, without any liability whatsoever.

1 BEDROOM APARTMENT

TYPE B2 (with terrace and balcony)

Meydan Racecourse, Hartland Estates,
Dubai Canal and Ras Al Khor Wildlife Sanctuary view

Suite area - 448.42 Sq.Ft. (41.6 Sq. M.)

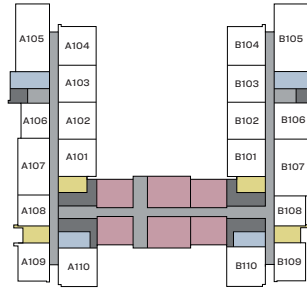
Terrace Area - 151.34 Sq.Ft. (14.0 Sq. M.)

Net Saleable Area - 599.77 Sq.Ft. (55.7 Sq. M.)

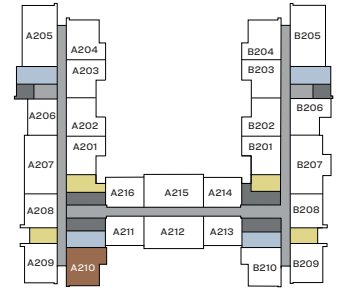
List of unit numbers* with the below unit plan:

A210

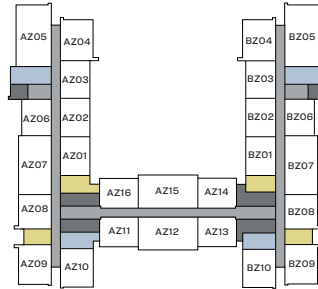
*Subject to availability.



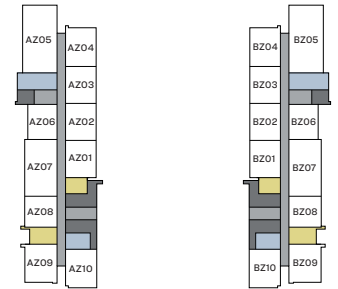
Level 01



Level 02



Level 03-21

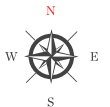


Level 22-33

■ UNITS



Ras Al Khor
Wildlife Sanctuary



Hartland Estates



Meydan Racecourse



Dubai Canal

Disclaimer: 1. All dimensions are in metric, measured to wall finishes. 2. All materials, dimensions & drawings are approximate. 3. Information is subject to change without notice, at developer's absolute discretion. 4. Actual area may vary from the stated area. 5. Drawing are not to scale. 6. All images used are for illustrative purpose only and do not represent the actual size, features, specifications, fittings and furnishings. 7. The developer reserves the right to make revisions/ alterations, at its absolute discretion, without any liability whatsoever.

1 BEDROOM APARTMENT

TYPE C

Downtown, Meydan One Mall and
Meydan Racecourse view

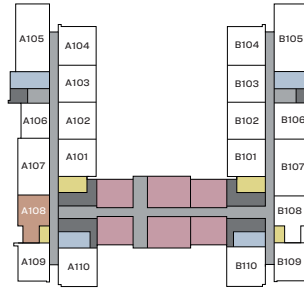
Suite area - 584.16 Sq.Ft. (54.3 Sq. M.)

Net Saleable Area - 584.16 Sq.Ft. (54.3 Sq. M.)

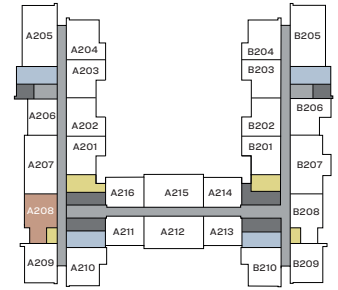
List of unit numbers* with the below unit plan:

A108, A208, A308, A408, A508, A608, A708, A808,
A908, A1008, A1108, A1208, A1308, A1408, A1508,
A1608, A1708, A1808, A1908, A2008, A2108, A2208,
A2308, A2408, A2508, A2608, A2708, A2808,
A2908, A3008, A3108, A3208, A3308

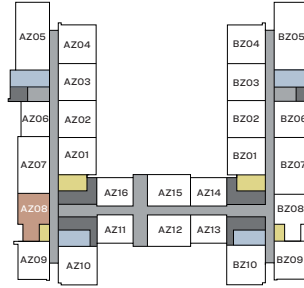
*Subject to availability.



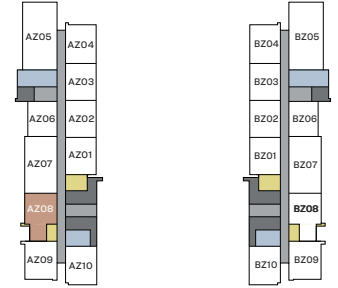
Level 01



Level 02



Level 03-21



Level 22-33

■ UNITS



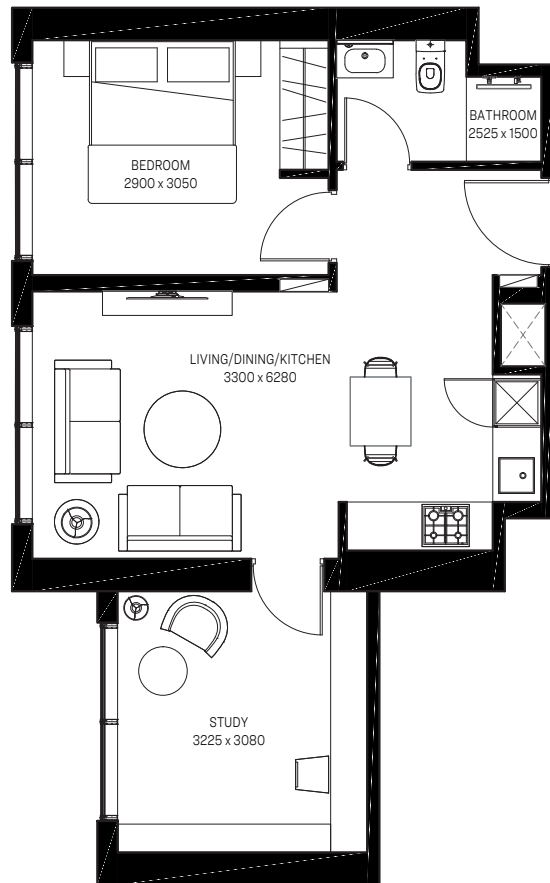
Downtown



Meydan One Mall



Meydan Racecourse



1 BEDROOM APARTMENT

TYPE C

Ras Al Khor Wildlife Sactuary and
Dubai Canal view

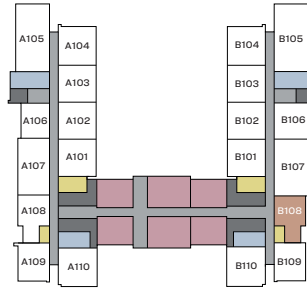
Suite area - 584.16 Sq.Ft. (54.3 Sq. M.)

Net Saleable Area - 584.16 Sq.Ft. (54.3 Sq. M.)

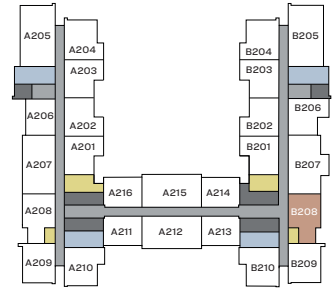
List of unit numbers' with the below unit plan:

B108, B208, B308, B408, B508, B608, B708, B808,
B908, B1008, B1108, B1208, B1308, B1408, B1508,
B1608, B1708, B1808, B1908, B2008, B2108, B2208,
B2308, B2408, B2508, B2608, B2708, B2808,
B2908, B3008, B3108, B3208, B3308

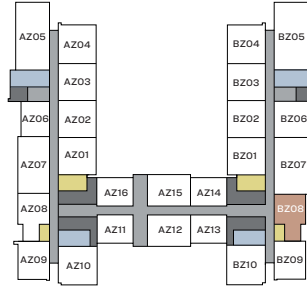
*Subject to availability.



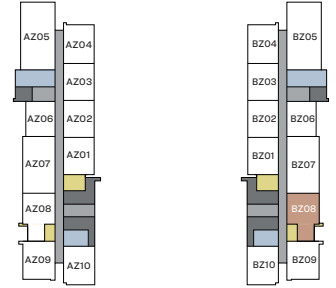
Level 01



Level 02

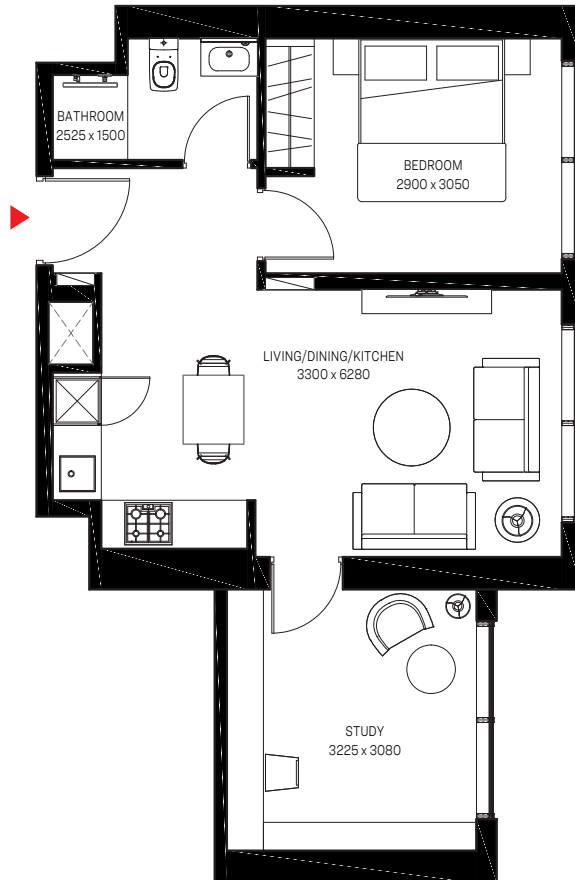


Level 03-21

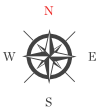


Level 22-33

■ UNITS



Ras Al Khor
Wildlife Sanctuary



Dubai Canal

Disclaimer: 1. All dimensions are in metric, measured to wall finishes. 2. All materials, dimensions & drawings are approximate. 3. Information is subject to change without notice, at developer's absolute discretion. 4. Actual area may vary from the stated area. 5. Drawing are not to scale. 6. All images used are for illustrative purpose only and do not represent the actual size, features, specifications, fittings and furnishings. 7. The developer reserves the right to make revisions/ alterations, at its absolute discretion, without any liability whatsoever.

1 BEDROOM APARTMENT

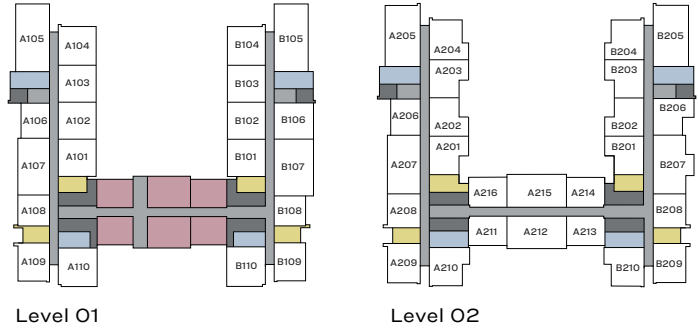
TYPE D (with balcony)

Dubai Creek, Ras Al Khor Wildlife Sactuary and Dubai Canal view

Suite Area - 461.56 Sq.Ft. (42.9 Sq. M.)

Balcony Area - 100.64 Sq.Ft. (9.3 Sq. M.)

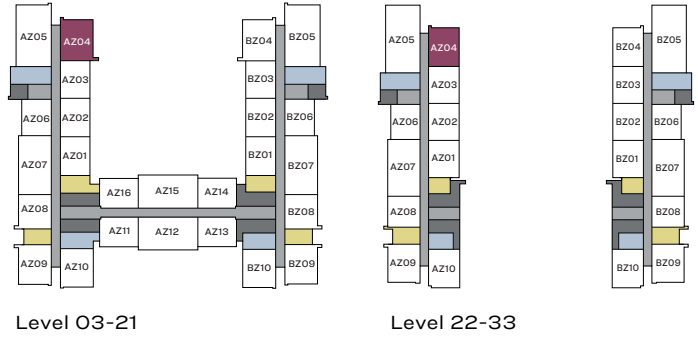
Net Saleable Area - 562.20 Sq.Ft. (52.2 Sq. M.)



List of unit numbers* with the below unit plan:

A304, A404, A504, A604, A704, A804, A904, A1004, A1104, A1204, A1304, A1404, A1504, A1604, A1704, A1804, A1904, A2004, A2104, A2204, A2304, A2404, A2504, A2604, A2704, A2804, A2904, A3004, A3104, A3204, A3304

*Subject to availability.

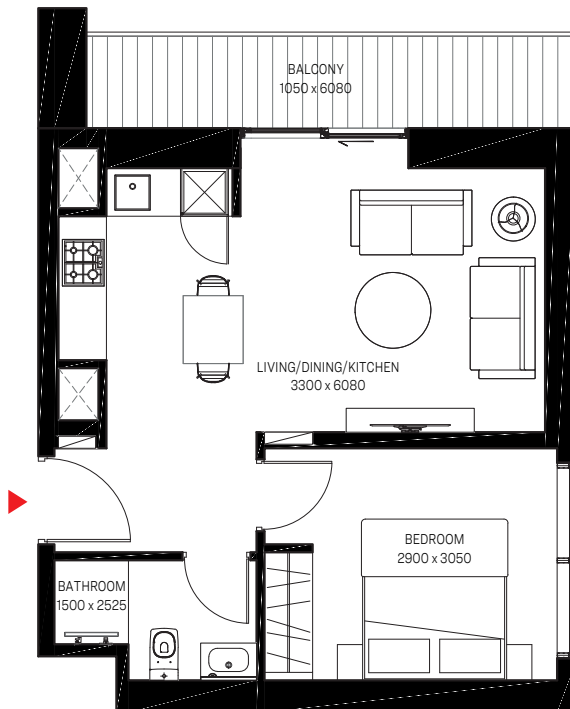


Dubai Creek

■ UNITS



Ras Al Khor
Wildlife Sanctuary



Dubai Canal

Disclaimer: 1. All dimensions are in metric, measured to wall finishes. 2. All materials, dimensions & drawings are approximate. 3. Information is subject to change without notice, at developer's absolute discretion. 4. Actual area may vary from the stated area. 5. Drawing are not to scale. 6. All images used are for illustrative purpose only and do not represent the actual size, features, specifications, fittings and furnishings. 7. The developer reserves the right to make revisions/ alterations, at its absolute discretion, without any liability whatsoever.

1 BEDROOM APARTMENT

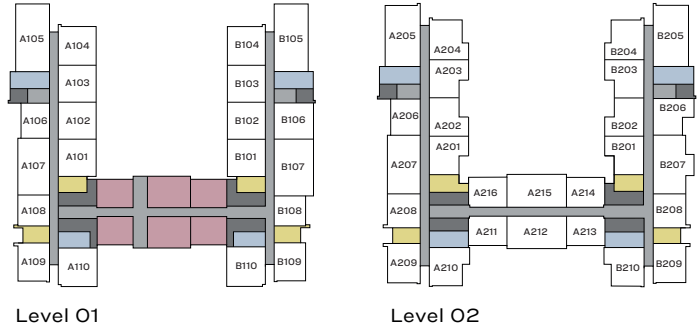
TYPE D (with balcony)

Downtown, Meydan One Mall and Dubai Creek view

Suite Area - 461.56 Sq.Ft. (42.9 Sq. M.)

Balcony Area - 100.64 Sq.Ft. (9.3 Sq. M.)

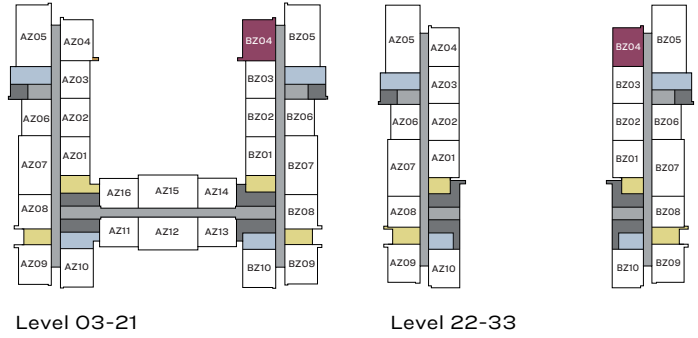
Net Saleable Area - 562.20 Sq.Ft. (52.2 Sq. M.)



List of unit numbers* with the below unit plan:

B304, B404, B504, B604, B704, B804, B904, B1004, B1104, B1204, B1304, B1404, B1504, B1604, B1704, B1804, B1904, B2004, B2104, B2204, B2304, B2404, B2504, B2604, B2704, B2804, B2904, B3004, B3104, B3204, B3304

*Subject to availability.



■ UNITS



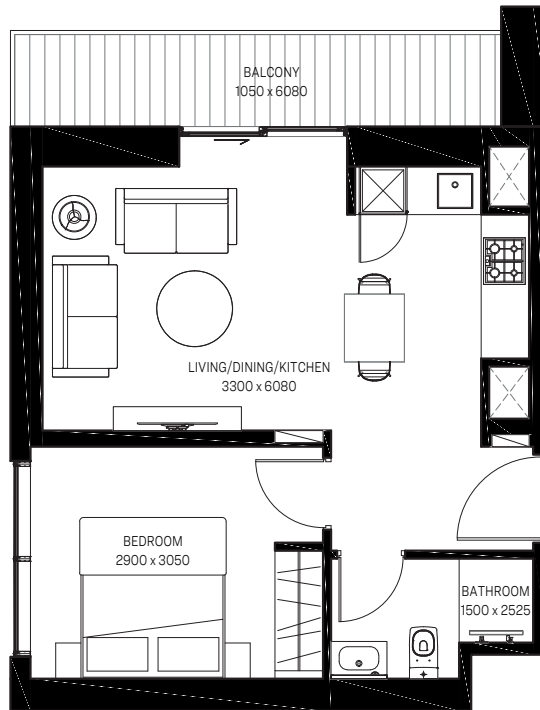
Downtown



Dubai Creek



Meydan One Mall



1 BEDROOM APARTMENT

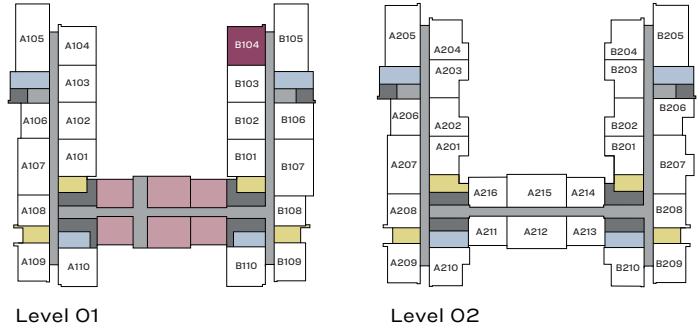
TYPE D1 (with yard)

Downtown, Meydan One Mall and Dubai Creek view

Suite Area - 507.84 Sq.Ft. (47.2 Sq. M.)

Yard Area - 182.13 Sq.Ft. (16.9 Sq. M.)

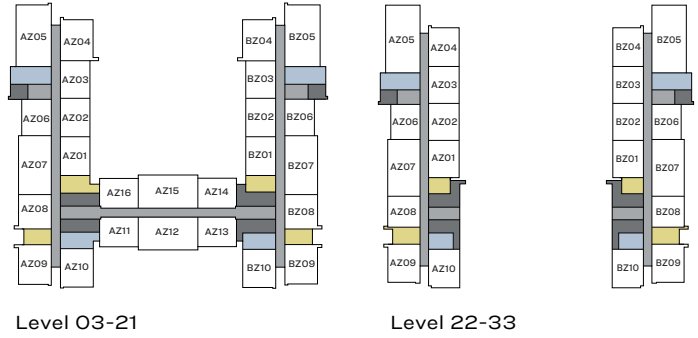
Net Saleable Area - 689.9 Sq.Ft. (64.1 Sq. M.)



List of unit numbers* with the below unit plan:

B104

*Subject to availability.



■ UNITS



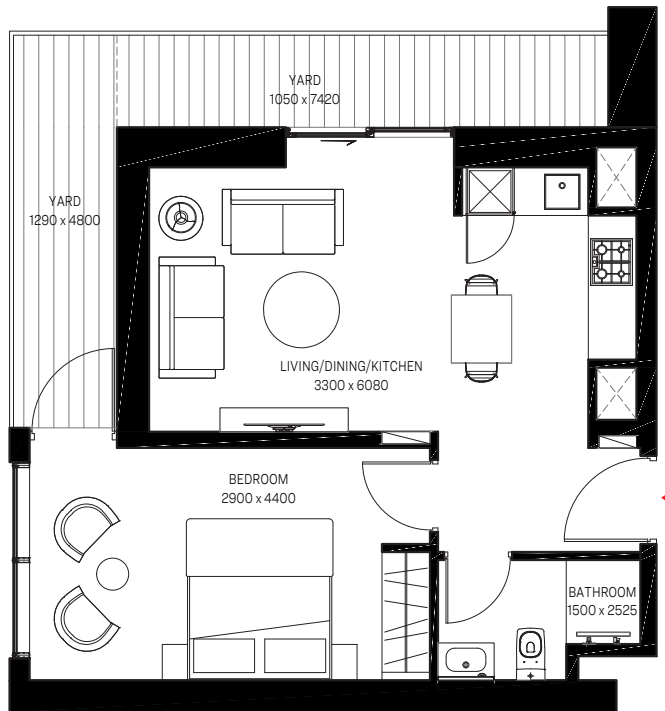
Downtown



Dubai Creek



Meydan One Mall



Disclaimer: 1. All dimensions are in metric, measured to wall finishes. 2. All materials, dimensions & drawings are approximate. 3. Information is subject to change without notice, at developer's absolute discretion. 4. Actual area may vary from the stated area. 5. Drawing are not to scale. 6. All images used are for illustrative purpose only and do not represent the actual size, features, specifications, fittings and furnishings. 7. The developer reserves the right to make revisions/ alterations, at its absolute discretion, without any liability whatsoever.

1 BEDROOM APARTMENT

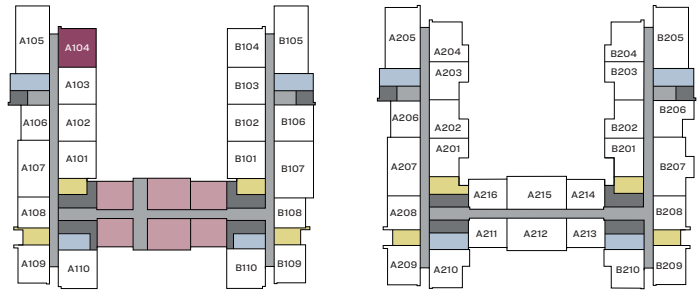
TYPE D1 (with yard)

Dubai Creek, Ras Al Khor Wildlife Sanctuary view

Suite Area - 507.84 Sq.Ft. (47.2 Sq. M.)

Yard Area - 182.13 Sq.Ft. (16.9 Sq. M.)

Net Saleable Area - 689.9 Sq.Ft. (64.1 Sq. M.)



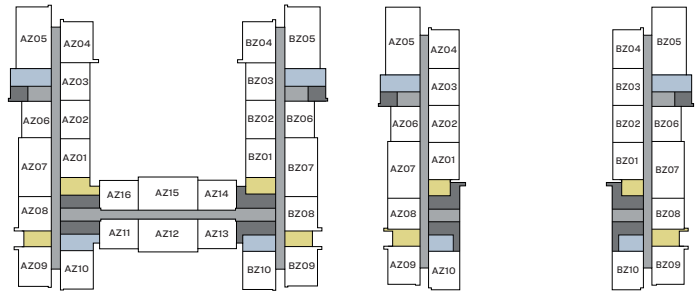
Level 01

Level 02

List of unit numbers* with the below unit plan:

A104

*Subject to availability.



Level 03-21

Level 22-33

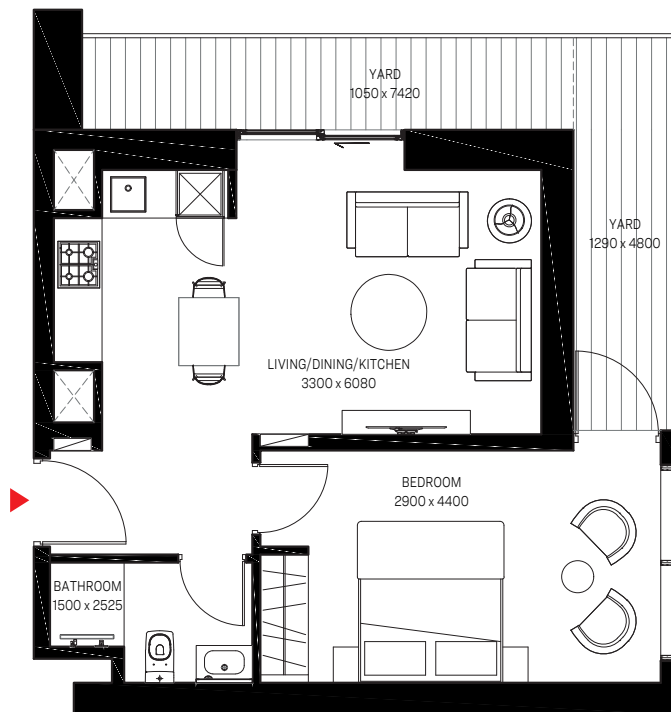
■ UNITS



Dubai Creek



Ras Al Khor
Wildlife Sanctuary



Disclaimer: 1. All dimensions are in metric, measured to wall finishes. 2. All materials, dimensions & drawings are approximate. 3. Information is subject to change without notice, at developer's absolute discretion. 4. Actual area may vary from the stated area. 5. Drawing are not to scale. 6. All images used are for illustrative purpose only and do not represent the actual size, features, specifications, fittings and furnishings. 7. The developer reserves the right to make revisions/ alterations, at its absolute discretion, without any liability whatsoever.

1 BEDROOM APARTMENT

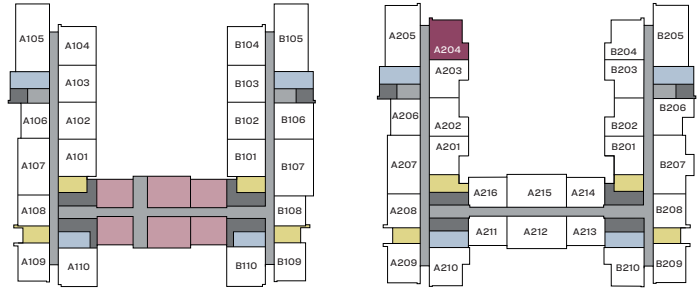
TYPE D2 (with balcony)

Dubai Creek, Ras Al Khor Wildlife Sanctuary and Dubai Canal view

Suite Area - 461.77 Sq.Ft. (42.9 Sq. M.)

Yard Area - 153.3 Sq.Ft. (14.2 Sq. M.)

Net Saleable Area - 615.05 Sq.Ft. (57.2 Sq. M.)



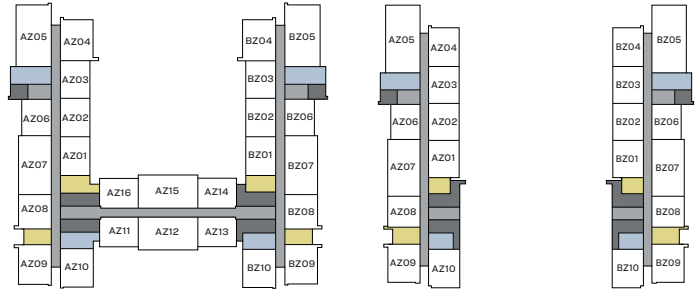
Level 01

Level 02

List of unit numbers* with the below unit plan:

A204

*Subject to availability.



Level 03-21

Level 22-33

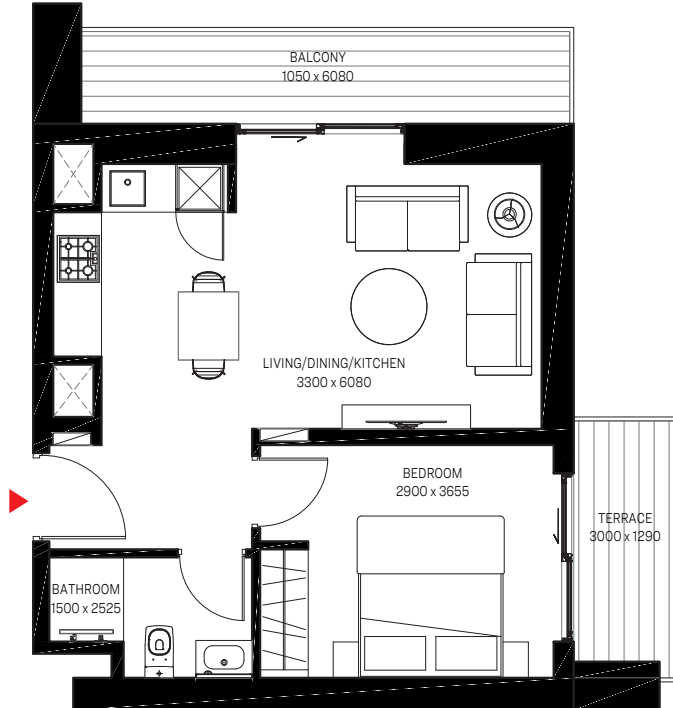


Dubai Creek

■ UNITS



Ras Al Khor
Wildlife Sanctuary



Dubai Canal

Disclaimer: 1. All dimensions are in metric, measured to wall finishes. 2. All materials, dimensions & drawings are approximate. 3. Information is subject to change without notice, at developer's absolute discretion. 4. Actual area may vary from the stated area. 5. Drawing are not to scale. 6. All images used are for illustrative purpose only and do not represent the actual size, features, specifications, fittings and furnishings. 7. The developer reserves the right to make revisions/ alterations, at its absolute discretion, without any liability whatsoever.

1 BEDROOM APARTMENT

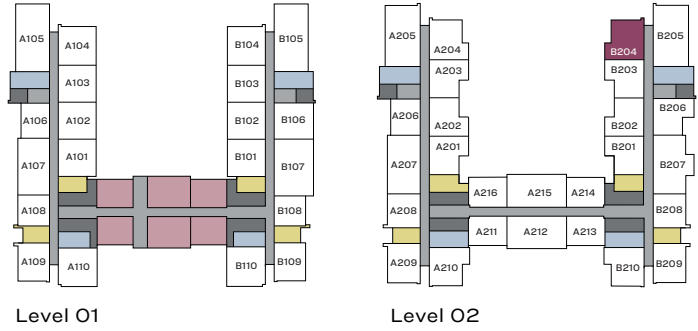
TYPE D2 (with balcony)

Downtown, Meydan One Mall, Meydan Racecourse, Hartland Estates and Dubai Canal view

Suite Area - 461.77 Sq.Ft. (42.9 Sq. M.)

Yard Area - 153.3 Sq.Ft. (14.2 Sq. M.)

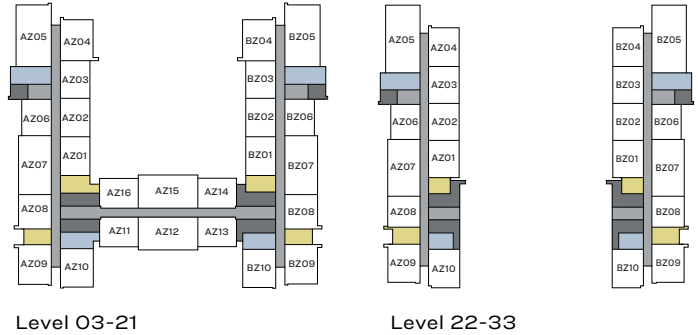
Net Saleable Area - 615.05 Sq.Ft. (57.2 Sq. M.)



List of unit numbers* with the below unit plan:

B204

*Subject to availability.



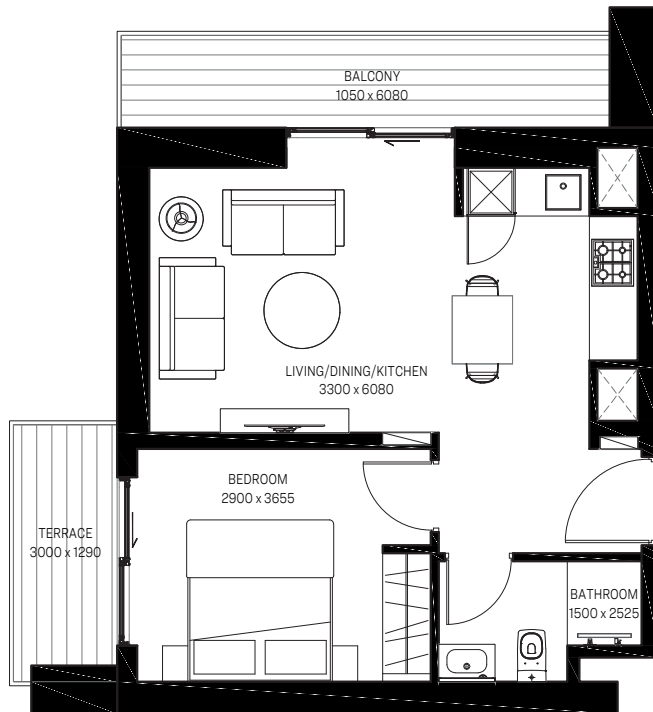
■ UNITS



Downtown



Meydan One Mall



Hartland Estates



Meydan Racecourse



Dubai Canal

Disclaimer: 1. All dimensions are in metric, measured to wall finishes. 2. All materials, dimensions & drawings are approximate. 3. Information is subject to change without notice, at developer's absolute discretion. 4. Actual area may vary from the stated area. 5. Drawing are not to scale. 6. All images used are for illustrative purpose only and do not represent the actual size, features, specifications, fittings and furnishings. 7. The developer reserves the right to make revisions/ alterations, at its absolute discretion, without any liability whatsoever.

1 BEDROOM APARTMENT

TYPE E

Dubai Creek and Ras Al Khor Wildlife Sanctuary view

Suite Area - 564.5 Sq.Ft. (52.4 Sq. M.)

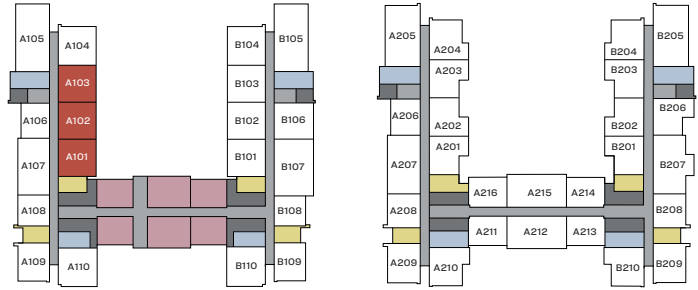
Yard Area - 90.47 Sq.Ft. (8.4 Sq. M.)

Net Saleable Area - 655.31 Sq.Ft. (60.9 Sq. M.)

List of unit numbers* with the below unit plan:

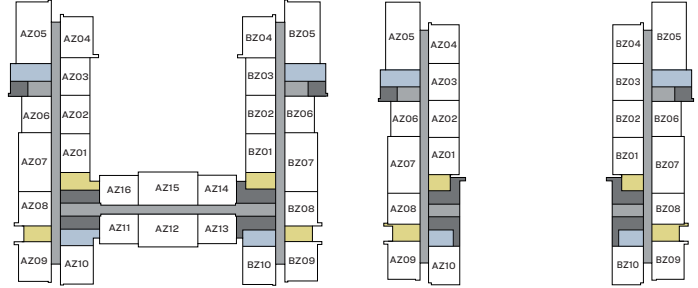
A101, A102, A103

*Subject to availability.



Level 01

Level 02



Level 03-21

Level 22-33

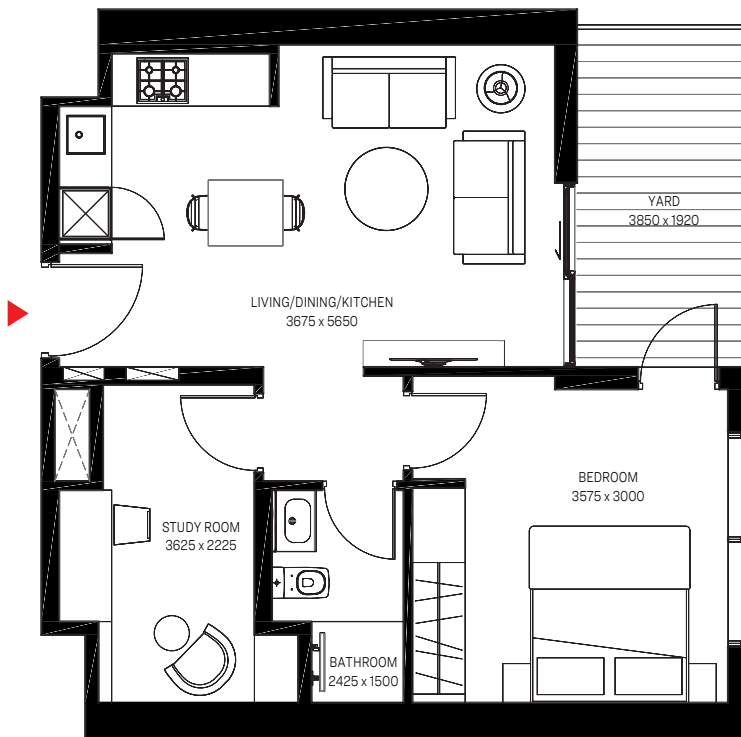
■ UNITS



Dubai Creek



Ras Al Khor
Wildlife Sanctuary



Disclaimer: 1. All dimensions are in metric, measured to wall finishes. 2. All materials, dimensions & drawings are approximate. 3. Information is subject to change without notice, at developer's absolute discretion. 4. Actual area may vary from the stated area. 5. Drawing are not to scale. 6. All images used are for illustrative purpose only and do not represent the actual size, features, specifications, fittings and furnishings. 7. The developer reserves the right to make revisions/ alterations, at its absolute discretion, without any liability whatsoever.

1 BEDROOM APARTMENT

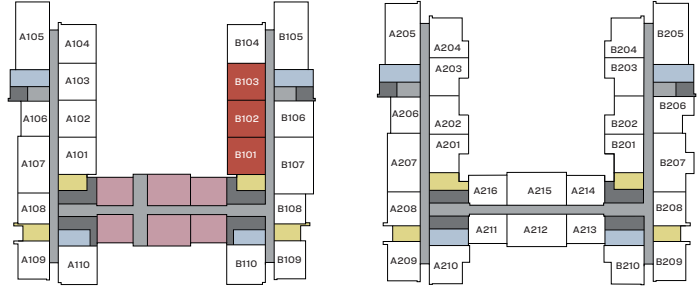
TYPE E

Downtown and Dubai Creek view

Suite Area - 564.5 Sq.Ft. (52.4 Sq. M.)

Yard Area - 90.47 Sq.Ft. (8.4 Sq. M.)

Net Saleable Area - 655.31 Sq.Ft. (60.9 Sq. M.)



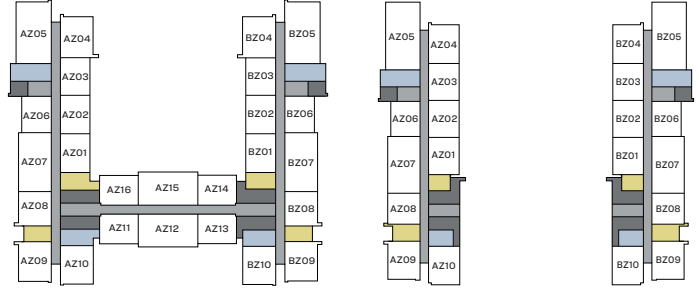
Level 01

Level 02

List of unit numbers* with the below unit plan:

B101, B102, B103

*Subject to availability.



Level 03-21

Level 22-33

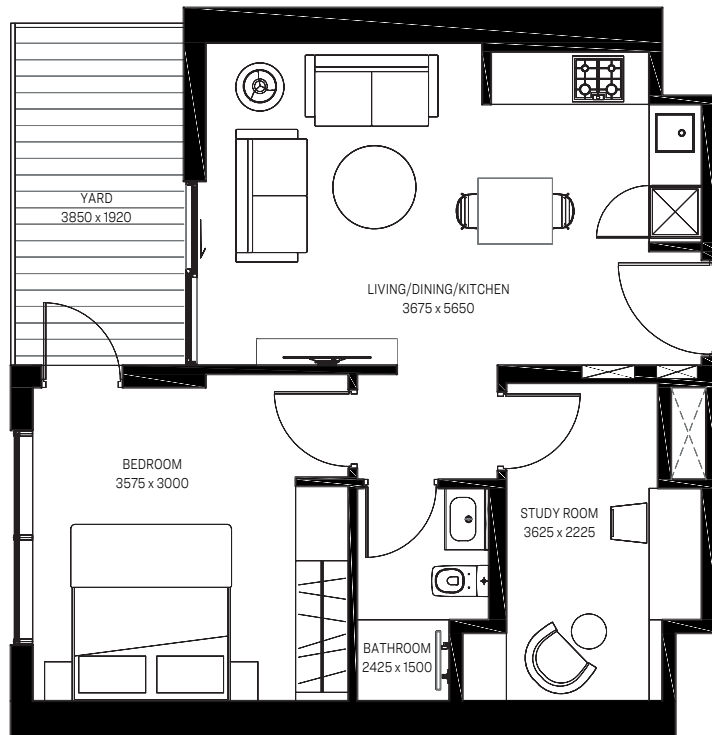


Downtown



Dubai Creek

■ UNITS



1 BEDROOM APARTMENT

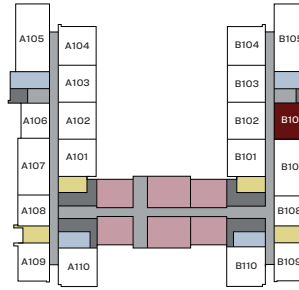
TYPE F

Dubai Creek, Ras Al Khor Wildlife Sanctuary,
Dubai Canal and Hartland Estates view

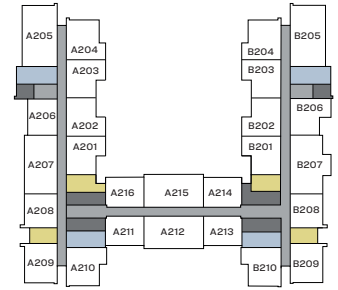
Suite Area - 578.24 Sq.Ft. (53.7 Sq. M.)

Yard Area - 104.8 Sq.Ft. (9.7 Sq. M.)

Net Saleable Area - 683.08 Sq.Ft. (63.4 Sq. M.)



Level 01

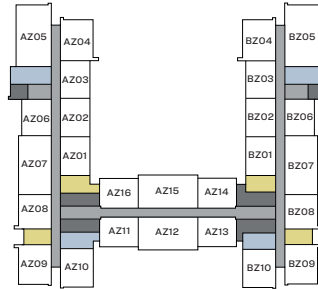


Level 02

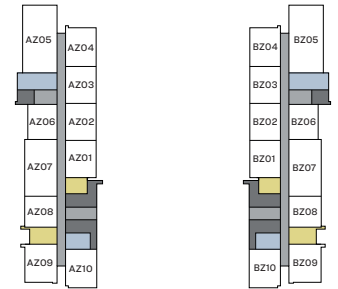
List of unit numbers* with the below unit plan:

B106

*Subject to availability.



Level 03-21



Level 22-33

■ UNITS



Dubai Creek



Ras Al Khor
Wildlife Sanctuary



Hartland Estates



Dubai Canal

Disclaimer: 1. All dimensions are in metric, measured to wall finishes. 2. All materials, dimensions & drawings are approximate. 3. Information is subject to change without notice, at developer's absolute discretion. 4. Actual area may vary from the stated area. 5. Drawing are not to scale. 6. All images used are for illustrative purpose only and do not represent the actual size, features, specifications, fittings and furnishings. 7. The developer reserves the right to make revisions/ alterations, at its absolute discretion, without any liability whatsoever.

2 BEDROOM APARTMENT

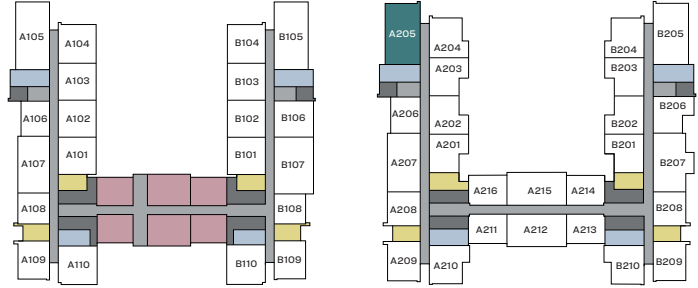
TYPE A (with balcony)

Dubai Creek, Downtown, Meydan One Mall and Ras Al Khor Wildlife Sactuary view

Suite Area - 833.88 Sq.Ft. (77.4 Sq. M.)

Balcony Area - 109.36 Sq.Ft. (10.1 Sq. M.)

Net Saleable Area - 943.24 Sq.Ft. (87.6 Sq. M.)



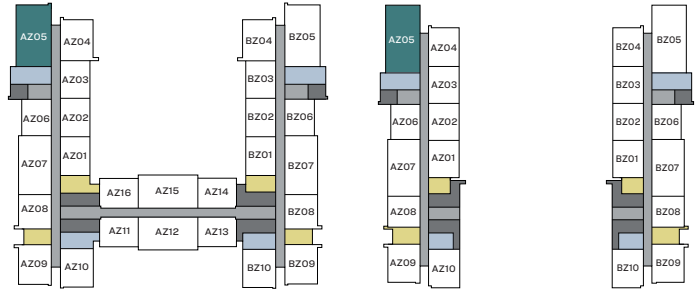
Level 01

Level 02

List of unit numbers* with the below unit plan:

- A205, A305, A405, A505, A605, A705, A805, A905,
- A1005, A1105, A1205, A1305, A1405, A1505, A1605,
- A1705, A1805, A1905, A2005, A2105, A2205, A2305,
- A2405, A2505, A2605, A2705, A2805, A2905,
- A3005, A3105, A3205, A3305

*Subject to availability.



Level 03-21

Level 22-33



Dubai Creek

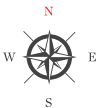
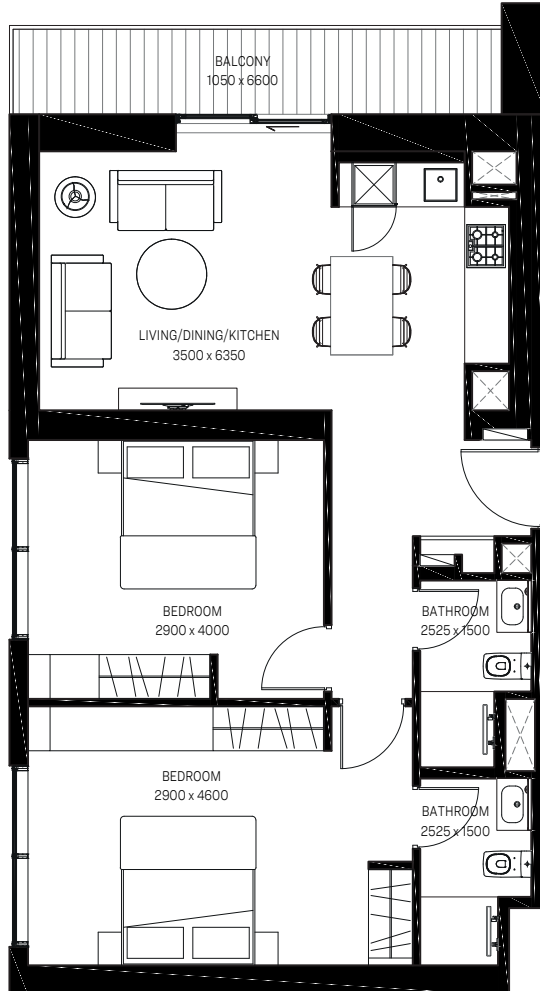
■ UNITS



Ras Al Khor Wildlife Sanctuary



Downtown



Meydan One Mall

Disclaimer: 1. All dimensions are in metric, measured to wall finishes. 2. All materials, dimensions & drawings are approximate. 3. Information is subject to change without notice, at developer's absolute discretion. 4. Actual area may vary from the stated area. 5. Drawing are not to scale. 6. All images used are for illustrative purpose only and do not represent the actual size, features, specifications, fittings and furnishings. 7. The developer reserves the right to make revisions/ alterations, at its absolute discretion, without any liability whatsoever.

2 BEDROOM APARTMENT

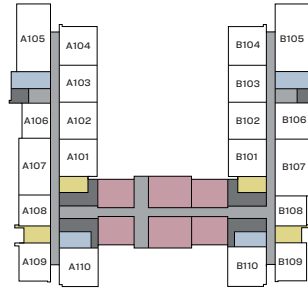
TYPE A (with balcony)

Dubai Creek, Downtown, Meydan One Mall and Ras Al Khor Wildlife Sactuary view

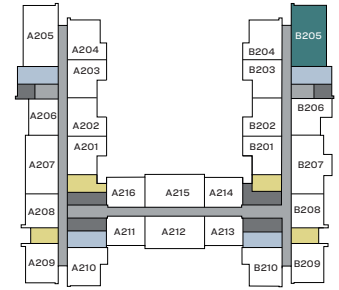
Suite Area - 833.88 Sq.Ft. (77.4 Sq. M.)

Balcony Area - 109.36 Sq.Ft. (10.1 Sq. M.)

Net Saleable Area - 943.24 Sq.Ft. (87.6 Sq. M.)



Level 01

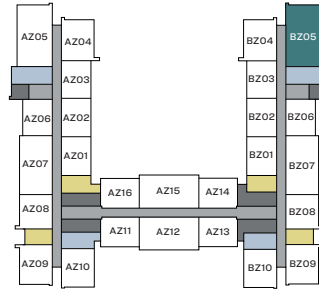


Level 02

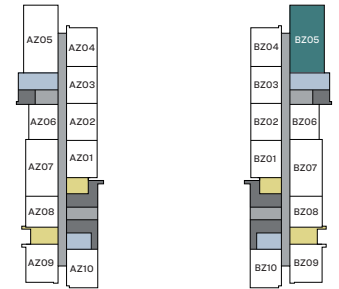
List of unit numbers* with the below unit plan:

B205, B305, B405, B505, B605, B705, B805, B905, B1005, B1105, B1205, B1305, B1405, B1505, B1605, B1705, B1805, B1905, B2005, B2105, B2205, B2305, B2405, B2505, B2605, B2705, B2805, B2905, B3005, B3105, B3205, B3305

*Subject to availability.



Level 03-21



Level 22-33

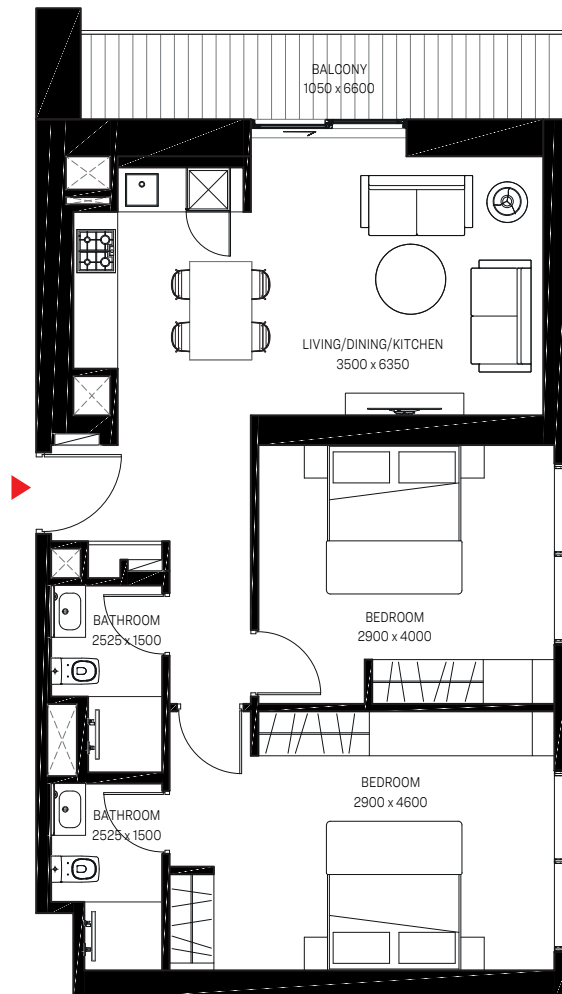
■ UNITS



Dubai Creek



Ras Al Khor
Wildlife Sanctuary



2 BEDROOM APARTMENT

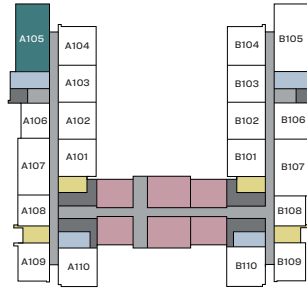
TYPE A1 (with yard)

Downtown, Dubai Creek and
Ras Al Khor Wildlife Sactuary view

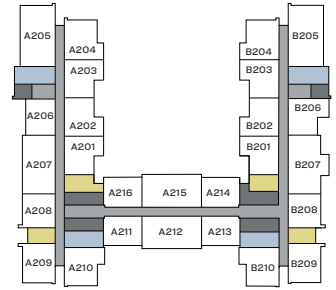
Suite Area - 833.88 Sq.Ft. (77.4 Sq. M.)

Yard Area - 226.04 Sq.Ft. (21.0 Sq. M.)

Net Saleable Area - 1,059.92 Sq.Ft. (98.4 Sq. M.)



Level 01

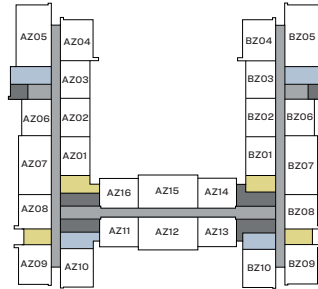


Level 02

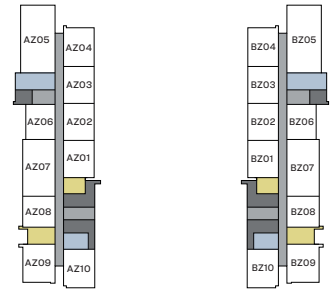
List of unit numbers* with the below unit plan:

A105

*Subject to availability.



Level 03-21



Level 22-33



Dubai Creek

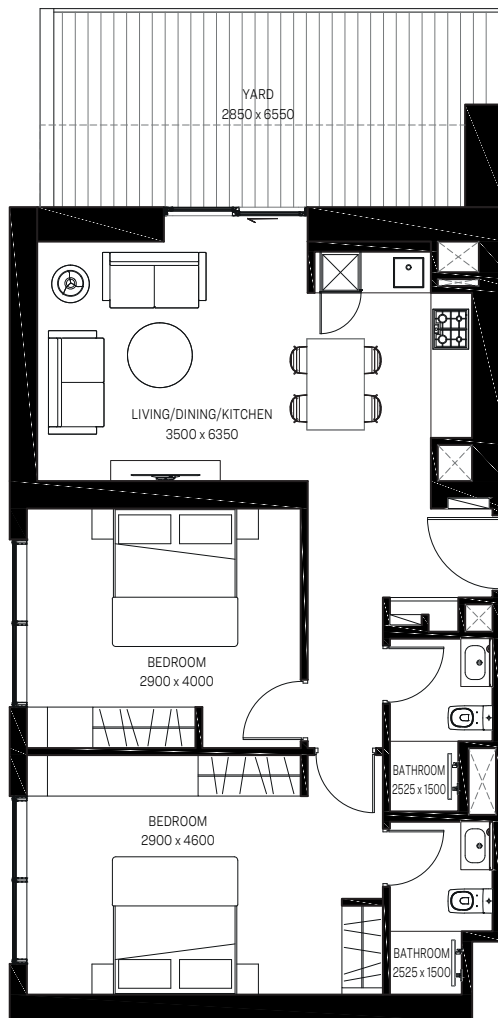


Downtown

UNITS



Ras Al Khor
Wildlife Sanctuary



Disclaimer: 1. All dimensions are in metric, measured to wall finishes. 2. All materials, dimensions & drawings are approximate. 3. Information is subject to change without notice, at developer's absolute discretion. 4. Actual area may vary from the stated area. 5. Drawing are not to scale. 6. All images used are for illustrative purpose only and do not represent the actual size, features, specifications, fittings and furnishings. 7. The developer reserves the right to make revisions/ alterations, at its absolute discretion, without any liability whatsoever.

2 BEDROOM APARTMENT

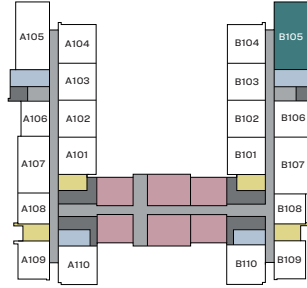
TYPE A1 (with yard)

Meydan One Mall, Hartland Estates, Dubai Canal and Ras Al Khor Wildlife Sactuary view

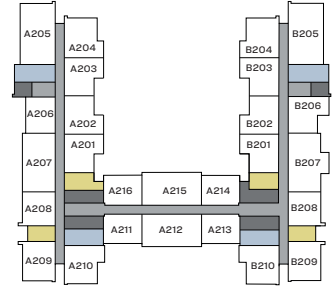
Suite Area - 833.88 Sq.Ft. (77.4 Sq. M.)

Yard Area - 226.04 Sq.Ft. (21.0 Sq. M.)

Net Saleable Area - 1,059.92 Sq.Ft. (98.4 Sq. M.)



Level 01

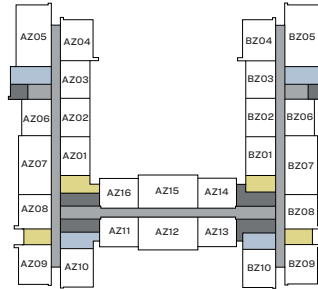


Level 02

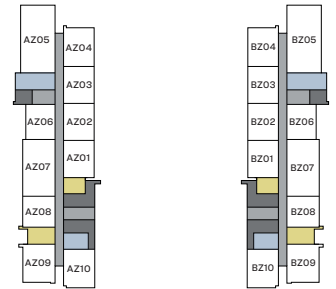
List of unit numbers* with the below unit plan:

B105

*Subject to availability.



Level 03-21

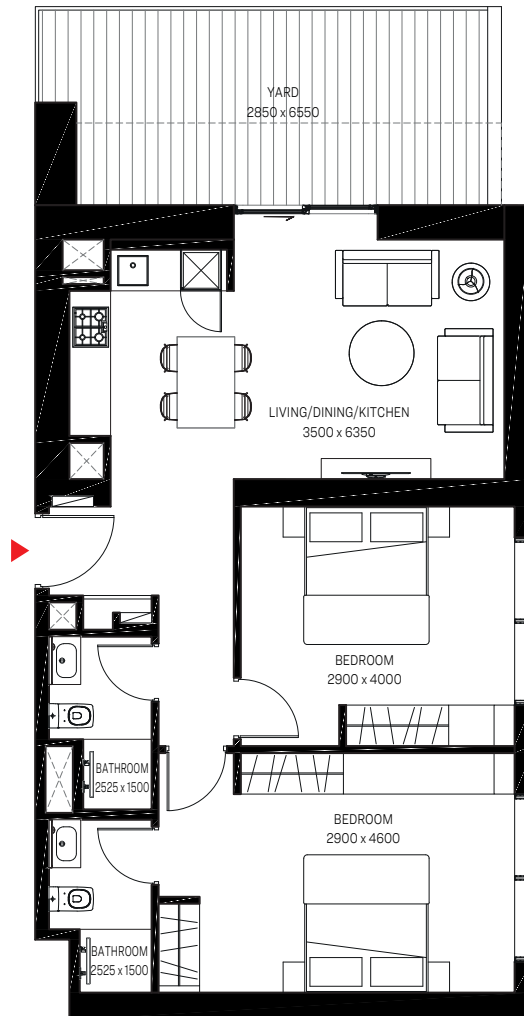


Level 22-33

■ UNITS



Ras Al Khor Wildlife Sanctuary



Disclaimer: 1. All dimensions are in metric, measured to wall finishes. 2. All materials, dimensions & drawings are approximate. 3. Information is subject to change without notice, at developer's absolute discretion. 4. Actual area may vary from the stated area. 5. Drawing are not to scale. 6. All images used are for illustrative purpose only and do not represent the actual size, features, specifications, fittings and furnishings. 7. The developer reserves the right to make revisions/ alterations, at its absolute discretion, without any liability whatsoever.

2 BEDROOM APARTMENT

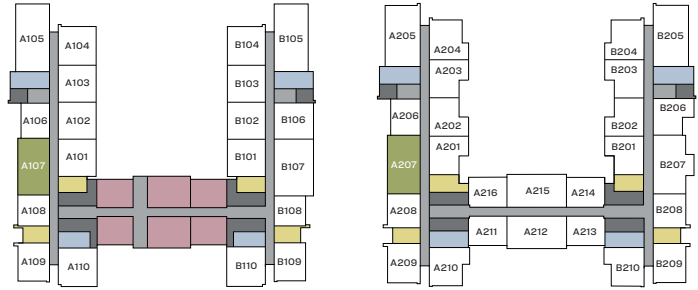
TYPE B (with balcony)

Downtown and Meydan One Mall view

Suite Area - 746.69 Sq.Ft. (69.3 Sq. M.)

Balcony Area - 49.30 Sq.Ft. (4.9 Sq. M.)

Net Saleable Area - 795.99 Sq.Ft. (73.9 Sq. M.)



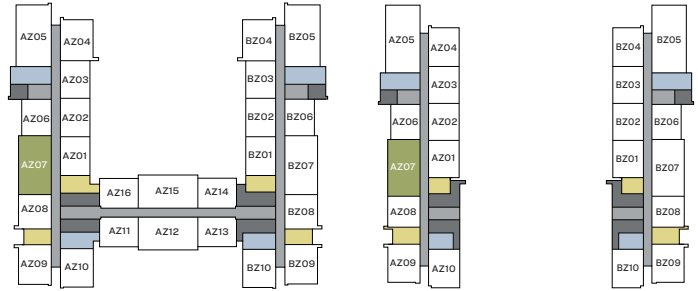
Level 01

Level 02

List of unit numbers* with the below unit plan:

A107, A207, A307, A407, A507, A607, A707, A807, A907, A1007, A1107, A1207, A1307, A1407, A1507, A1607, A1707, A1807, A1907, A2007, A2107, A2207, A2307, A2407, A2507, A2607, A2707, A2807, A2907, A3007, A3107, A3207, A3307

*Subject to availability.



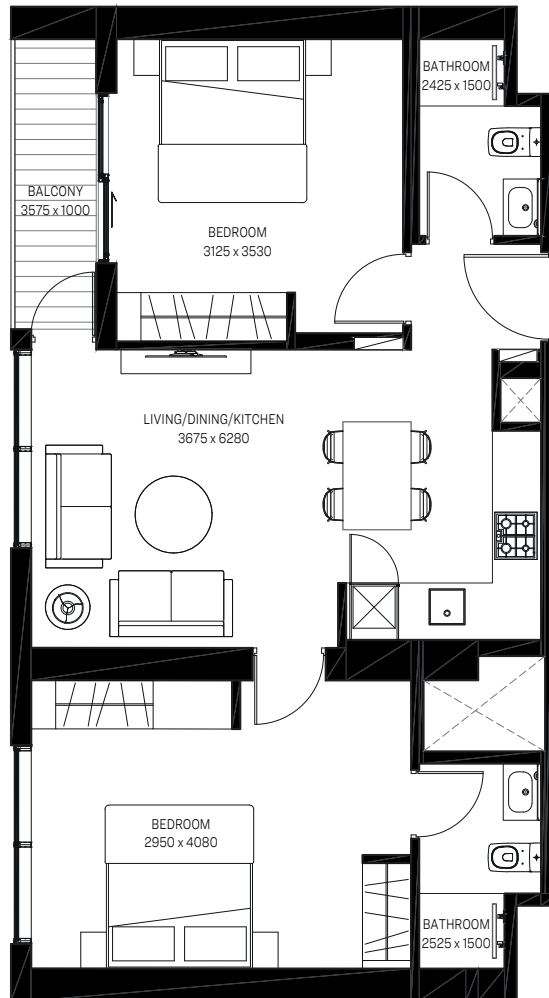
Level 03-21

Level 22-33

■ UNITS



Downtown



Meydan One Mall

Disclaimer: 1. All dimensions are in metric, measured to wall finishes. 2. All materials, dimensions & drawings are approximate. 3. Information is subject to change without notice, at developer's absolute discretion. 4. Actual area may vary from the stated area. 5. Drawing are not to scale. 6. All images used are for illustrative purpose only and do not represent the actual size, features, specifications, fittings and furnishings. 7. The developer reserves the right to make revisions/ alterations, at its absolute discretion, without any liability whatsoever.

2 BEDROOM APARTMENT

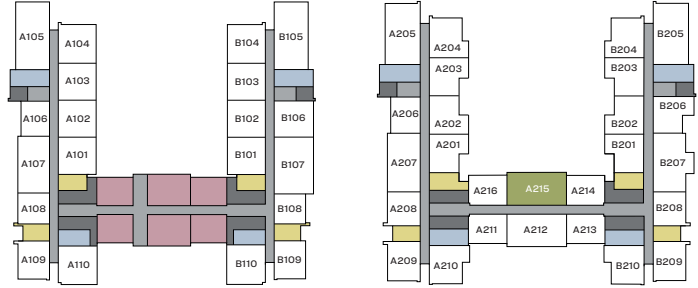
TYPE B (with balcony)

Downtown, Dubai Creek and
Ras Al Khor Wildlife Sactuary view

Suite Area - 746.69 Sq.Ft. (69.3 Sq. M.)

Balcony Area - 49.30 Sq.Ft. (4.9 Sq. M.)

Net Saleable Area - 795.99 Sq.Ft. (73.9 Sq. M.)

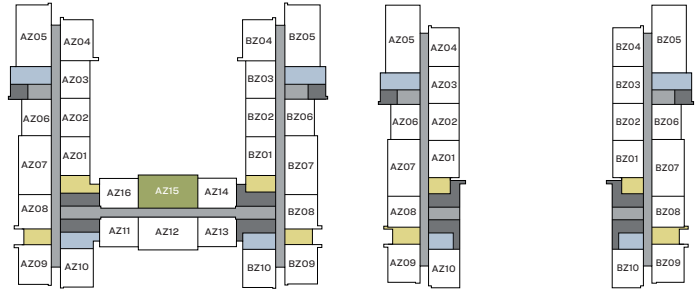


Level 01

Level 02

List of unit numbers* with the below unit plan:

A215, A315, A415, A515, A615, A715, A815, A915,
A1015, A1115, A1215, A1315, A1415, A1515, A1615, A1715,
A1815, A1915, A2015, A2115



Level 03-21

Level 22-33

■ UNITS



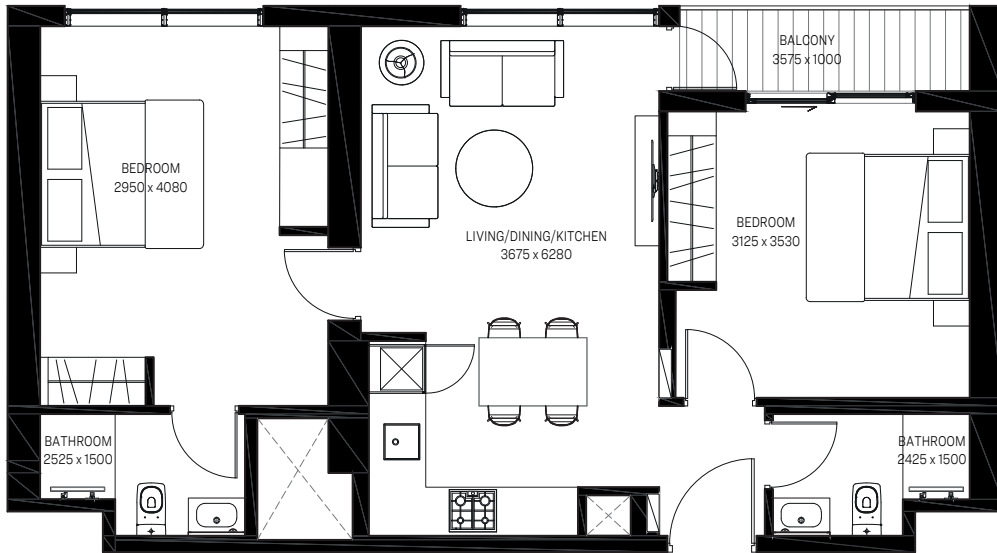
Downtown



Dubai Creek



Ras Al Khor
Wildlife Sanctuary



Disclaimer: 1. All dimensions are in metric, measured to wall finishes. 2. All materials, dimensions & drawings are approximate. 3. Information is subject to change without notice, at developer's absolute discretion. 4. Actual area may vary from the stated area. 5. Drawing are not to scale. 6. All images used are for illustrative purpose only and do not represent the actual size, features, specifications, fittings and furnishings. 7. The developer reserves the right to make revisions/ alterations, at its absolute discretion, without any liability whatsoever.

2 BEDROOM APARTMENT

TYPE B (with balcony)

Meydan One Mall, Hartland Estates, and
Dubai Canal view

Suite Area - 746.69 Sq.Ft. (69.3 Sq. M.)

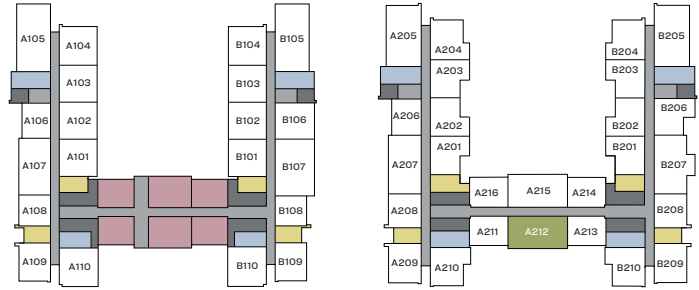
Balcony Area - 49.30 Sq.Ft. (4.9 Sq. M.)

Net Saleable Area - 795.99 Sq.Ft. (73.9 Sq. M.)

List of unit numbers* with the below unit plan:

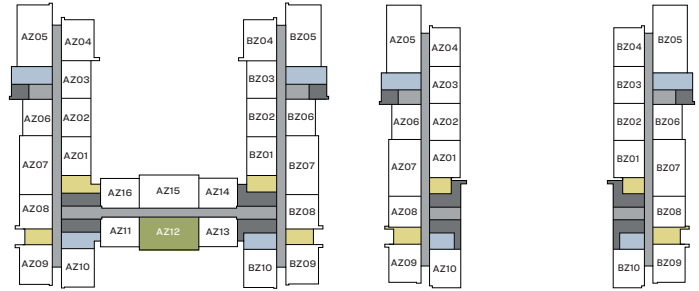
A212, A312, A412, A512, A612, A712, A812, A912, A1012,
A1112, A1212, A1312, A1412, A1512, A1612, A1712, A1812,
A1912, A2012, A2112

*Subject to availability.



Level 01

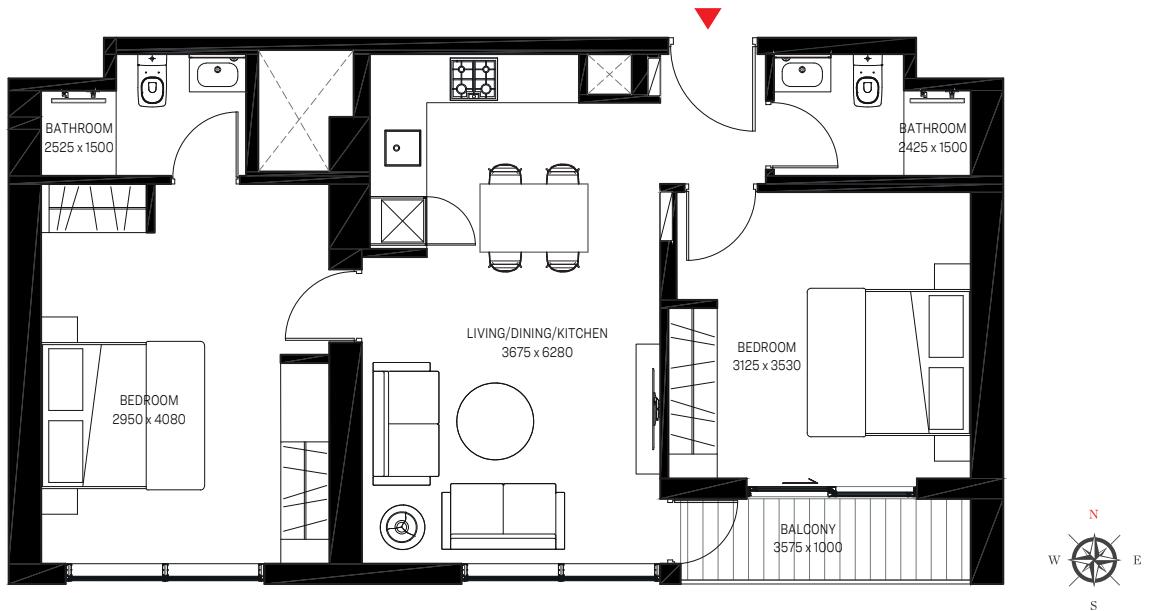
Level 02



Level 03-21

Level 22-33

■ UNITS



Hartland Estates



Meydan One Mall



Dubai Canal

Disclaimer: 1. All dimensions are in metric, measured to wall finishes. 2. All materials, dimensions & drawings are approximate. 3. Information is subject to change without notice, at developer's absolute discretion. 4. Actual area may vary from the stated area. 5. Drawing are not to scale. 6. All images used are for illustrative purpose only and do not represent the actual size, features, specifications, fittings and furnishings. 7. The developer reserves the right to make revisions/ alterations, at its absolute discretion, without any liability whatsoever.

2 BEDROOM APARTMENT

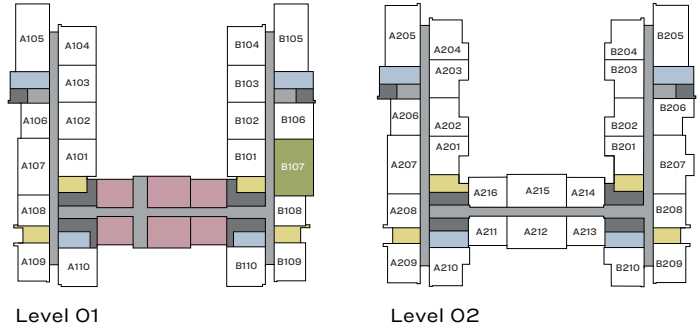
TYPE B1 (with yard)

Dubai Creek, Ras Al Khor Wildlife Sactuary,
Dubai Canal and Hartland Estates view

Suite Area - 861.33 Sq.Ft. (80.02 Sq. M.)

Yard Area - 155.32 Sq.Ft. (14.43 Sq. M.)

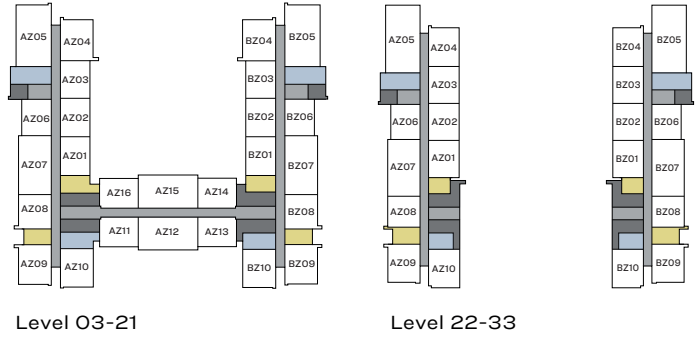
Net Saleable Area - 1,016.65 Sq.Ft. (94.4 Sq. M.)



List of unit numbers* with the below unit plan:

B107

*Subject to availability.

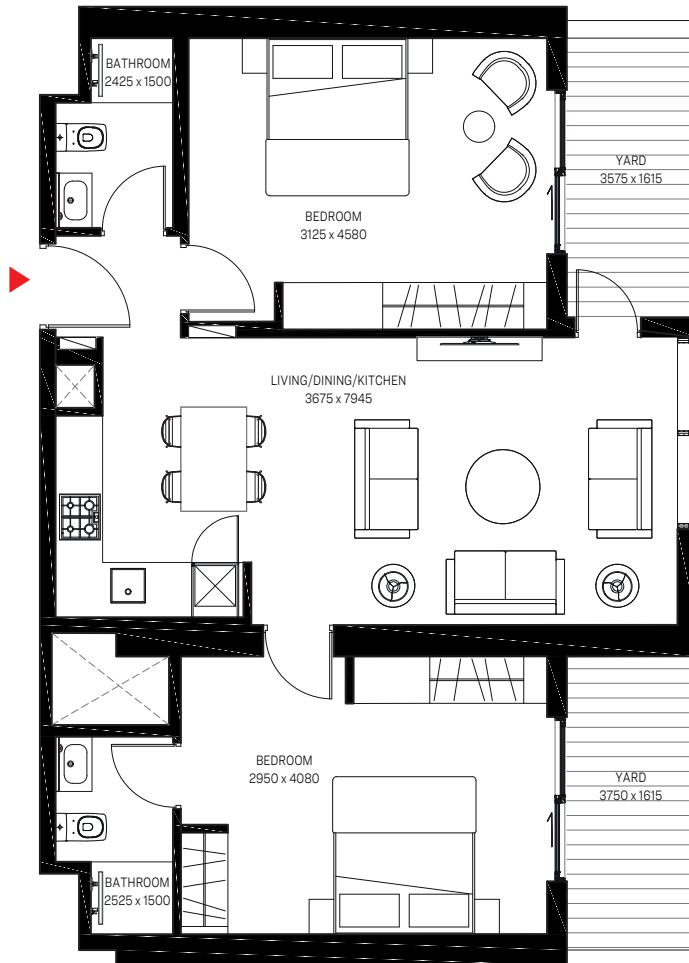


Dubai Creek

■ UNITS



Ras Al Khor
Wildlife Sanctuary



Hartland Estates



Dubai Canal

Disclaimer: 1. All dimensions are in metric, measured to wall finishes. 2. All materials, dimensions & drawings are approximate. 3. Information is subject to change without notice, at developer's absolute discretion. 4. Actual area may vary from the stated area. 5. Drawing are not to scale. 6. All images used are for illustrative purpose only and do not represent the actual size, features, specifications, fittings and furnishings. 7. The developer reserves the right to make revisions/ alterations, at its absolute discretion, without any liability whatsoever.

2 BEDROOM APARTMENT

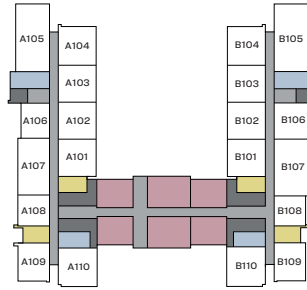
TYPE B2 (with balcony)

Ras Al Khor Wildlife Sactuary, Dubai Canal and Hartland Estates view

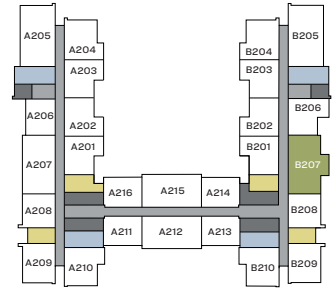
Suite Area - 746.69 Sq.Ft. (69.3 Sq. M.)

Balcony Area - 132.40 Sq.Ft. (12.3 Sq. M.)

Net Saleable Area - 879.09 Sq.Ft. (81.6 Sq. M.)



Level 01

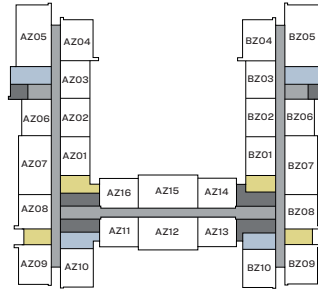


Level 02

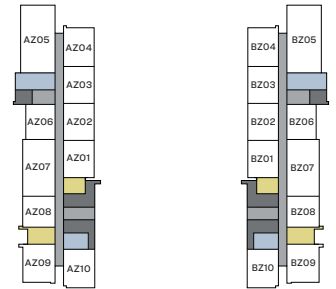
List of unit numbers* with the below unit plan:

B207

*Subject to availability.



Level 03-21

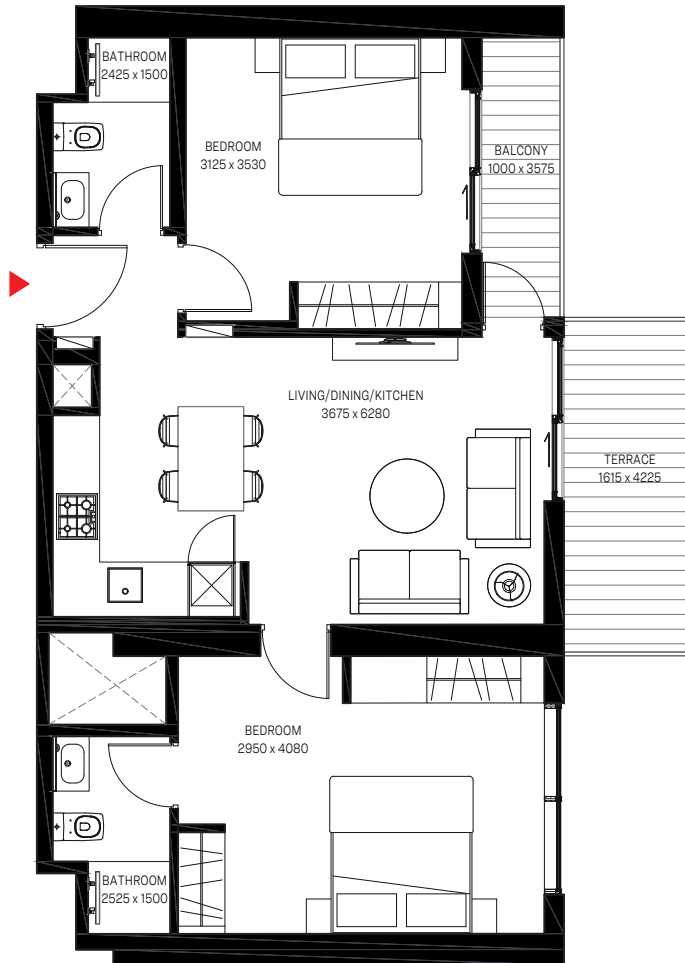


Level 22-33

■ UNITS



Ras Al Khor
Wildlife Sanctuary



Hartland Estates



Dubai Canal

Disclaimer: 1. All dimensions are in metric, measured to wall finishes. 2. All materials, dimensions & drawings are approximate. 3. Information is subject to change without notice, at developer's absolute discretion. 4. Actual area may vary from the stated area. 5. Drawing are not to scale. 6. All images used are for illustrative purpose only and do not represent the actual size, features, specifications, fittings and furnishings. 7. The developer reserves the right to make revisions/ alterations, at its absolute discretion, without any liability whatsoever.

SOBHA

REALTY

UAE

SOBHA HARTLAND

Nad Al Sheba 1,
Sobha Hartland Site Office,
Dubai, UAE.
Tel : +971 800 999 999
www.sobharealty.com

SOBHA BRAND STUDIO

Sobha Sales Gallery, Eiffel 2 Building,
Next to Lamborghini Showroom,
Sheikh Zayed Road,
Dubai, UAE.
Tel : +971 4 423 8064, Ext : 1600
www.sobharealty.com

UK

SOBHA GLOBAL STUDIO

92 Park Lane, Mayfair,
London, W1K 7TA,
United Kingdom.
Tel : +44 (0) 207 099 1000
Email : londonhq@sobha-me.com
www.sobharealty.com