



THE
CREST



SOBHA HARTLAND

Where Escaping is staying

Enjoy the perks of living
by a crystal lagoon in central Dubai





Why make Sobha Hartland your home?

Views of Ras Al Khor Wildlife Sanctuary and the crystal lagoon.

Located in the epicentre of the city with major landmarks just minutes away.

2 International schools within the Sobha Hartland Community.

3 lush green parks connected by a central pathway for all residents.

Central Park

Acres of green canopies surround you in this exclusive park in Hartland Estates.

Greens East Park

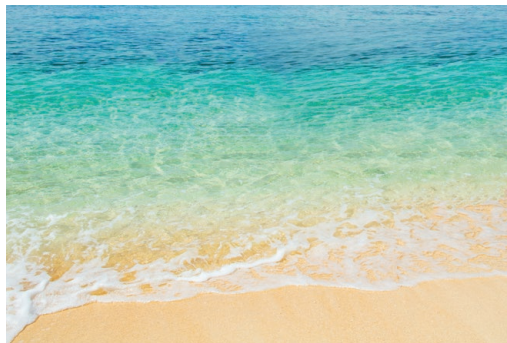
A park designed for outdoor recreation with an amphitheater, kids' play area, rock-climbing wall and a lot more.

Greens West Park

Bringing the forest to your doorstep in this park that is a doorway to a world far away, yet in the centre of the city.

Pre-Launching
TOWER B
at

THE
CREST



Caribbean-style crystal lagoon facing residences
now have a name

THE
CREST



Residential towers with inter-linked Sky Gardens
now have a name

THE
CREST



Experiential community living
now has a name

THE
CREST

What does The Crest
at Sobha Hartland have
to offer



- Located on the banks of a pristine **CRYSTAL LAGOON**.
3 inter-connected expansive towers.
- A host of **AMENITIES** spread across the podium level and the landscaped terraces; curated just for you.
- Residential living space that provides endless moments of **EXPERIENCES**.
- Inter-linked **SKYWALK** that brings all 3 towers of The Crest together.



THE
CREST

A lifestyle worthy of your every day,
with no reason to step out.

INDOOR
AMENITIES

THE
CREST



Health Club with
changing rooms

Multipurpose Hall



THE
CREST

Spin Class Studio



Pilates Studio

*Images used for representative purpose only



Yoga Studio

OUTDOOR
AMENITIES

THE
CREST



Swimming Pool

Kids Play Area



THE
CREST

Barbeque Area



Pentanque
Boules Lawn

*Images used for representative purpose only



Outdoor Gym
Terrace

Tai Chi Terrace



Inter-linked Sky Gardens
at different levels



Landscaped Terraces at
different levels with a
host of amenities



Payment Plan*

1&2 BR Apartments from
AED 987,600*

50%
in next 4 years

50%
2 years Post-Completion

*Offer valid from 01 March to 31 March 2022

THE
CREST

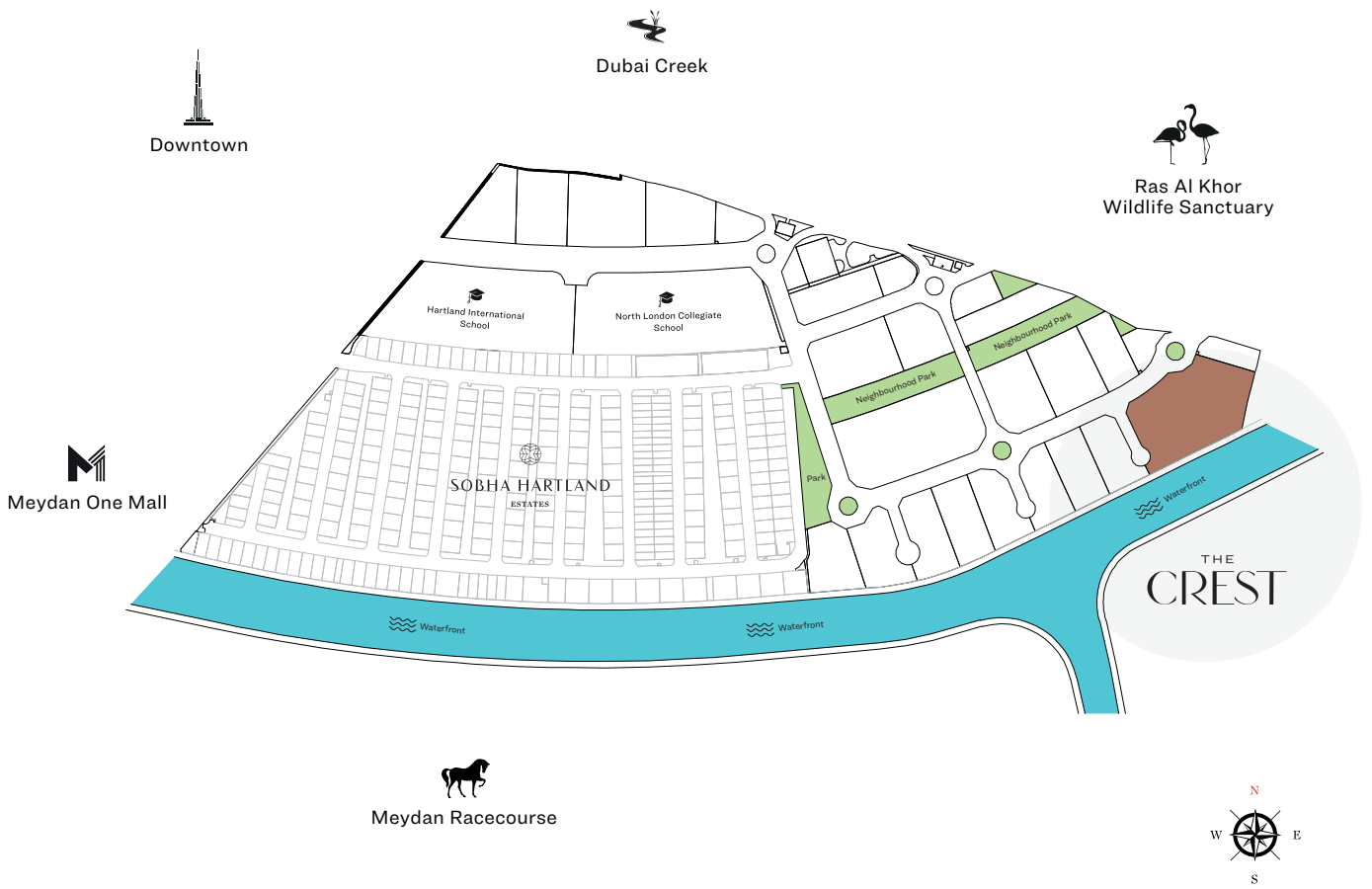
MASTER PLAN

FLOOR PLANS

RESIDENTIAL UNIT PLANS

THE
CREST

LOCATION IN THE MASTER PLAN



APARTMENT FEATURES



Landmark views



Covered car parking

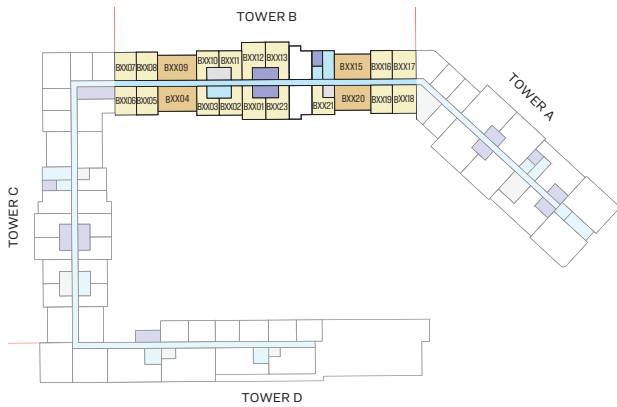
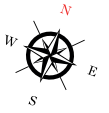


Fully fitted kitchens

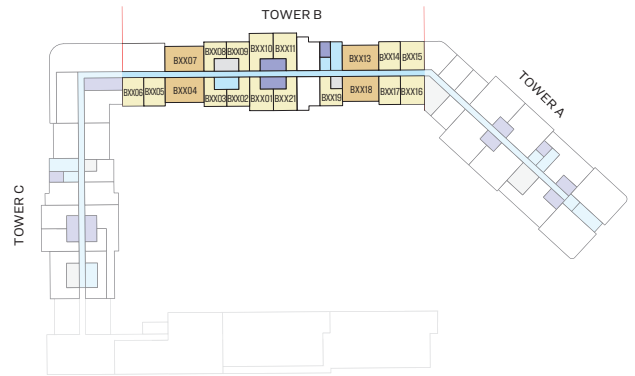


Bedroom wardrobe in all units

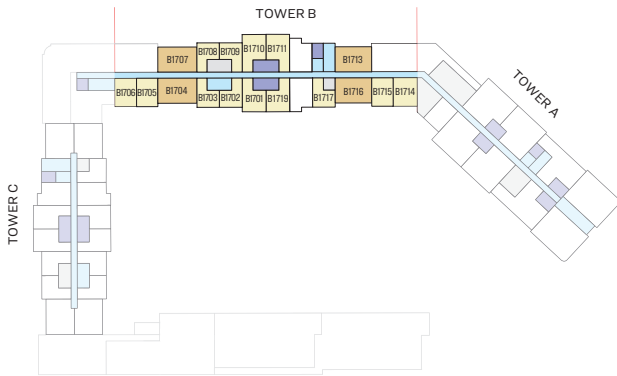
FLOOR PLAN LAYOUT



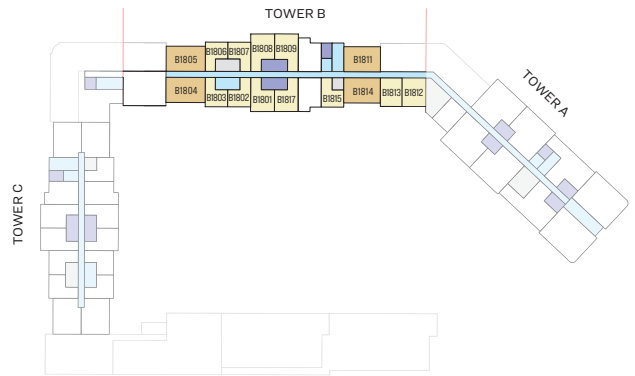
LEVEL 07-12



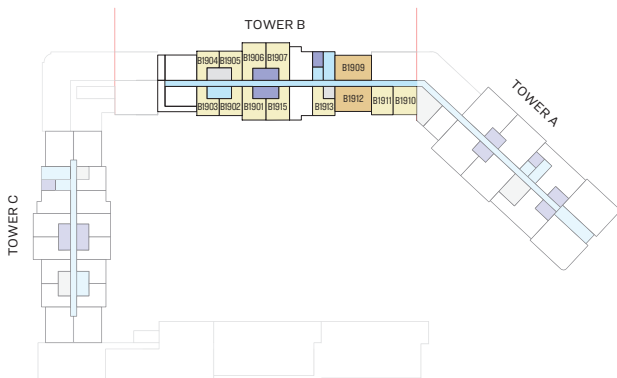
LEVEL 13-16



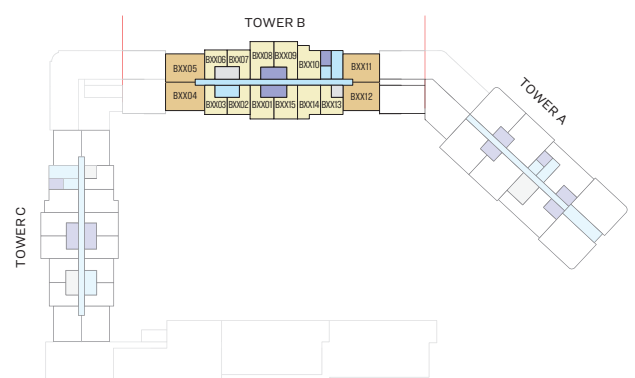
LEVEL 17



LEVEL 18



LEVEL 19



LEVEL 25-38

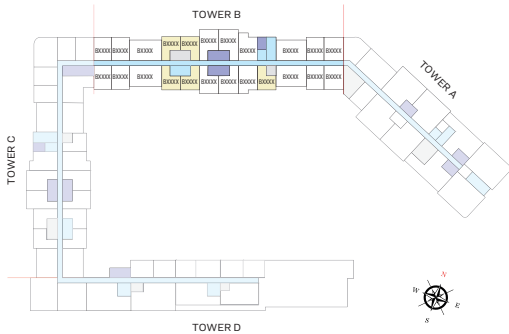
- 1 BED UNIT
- 2 BED UNIT
- LOBBIES, CORRIDORS & STAIRS
- SERVICES
- LIFT

1 BEDROOM APARTMENT

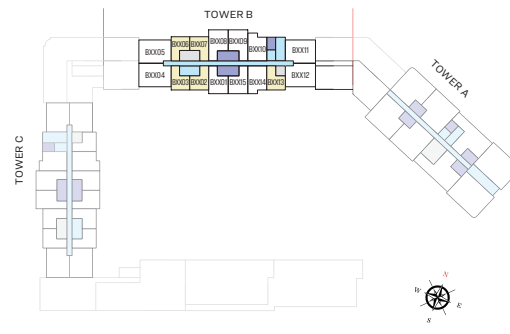
TYPE B (with balcony)

TOTAL SALEABLE AREA

SIZE RANGE = 511.29 SQ.FT. - 519.47 SQ.FT.

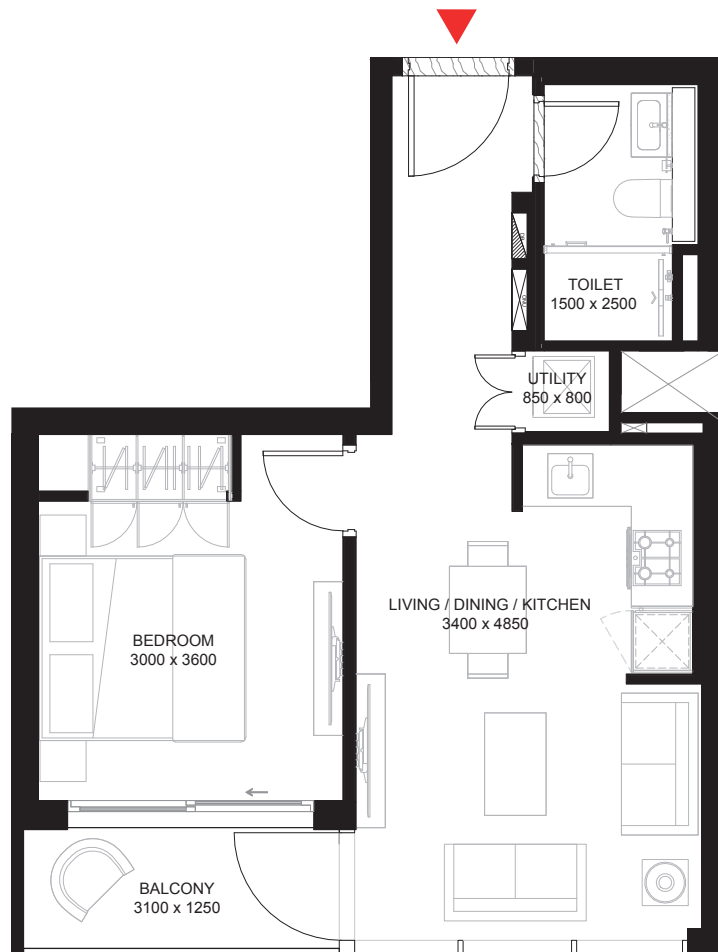


LEVEL 07 - 19



LEVEL 25-38

UNIT



List of unit numbers with this unit plan:

VIEWS

Amenities

B0702, B0703*, B0721*, B0802, B0803*, B0821*, B0902, B0903*, B0921*, B1002, B1003*, B1021*, B1102, B1103*, B1121*, B1202, B1203*, B1221*, B1302, B1303*

Hartland

B0710*, B0711*, B0810*, B0811*, B0910*, B0911*

Downtown, BK, Hartland, Ras Al Khor

B1508*, B1509*, B1608*, B1609*, B1708*, B1709*, B1806*, B1807*, B1904*, B1905*, B2506*, B2507*, B2606*, B2607*, B2706*, B2707*, B2806*, B2807*, B2906*, B2907*, B3006*, B3007*, B3106*, B3107*, B3206*, B3207*, B3306*, B3307*, B3406*, B3407*, B3506*, B3507*, B3606*, B3607*, B3706*, B3707*, B3806*, B3807*

Hartland, Ras Al Khor

B1010*, B1011*, B1110*, B1111*, B1210*, B1211*, B1308*, B1309*, B1408*, B1409*

Amenities, Waterfront

B1319*, B1402, B1403*, B1419*, B1502, B1503*, B1519*, B1602, B1603*, B1619*, B1702, B1703*, B1717*, B1802, B1803*, B1815*, B1902, B1903*, B1913*, B2502, B2503*, B2513*, B2602, B2603*, B2613*, B2702, B2703, B2713*, B2802, B2803*, B2813*, B2902, B2903*, B2913*, B3002, B3003*, B3013*, B3102, B3103*, B3113*, B3202, B3203*, B3213*, B3302, B3303*, B3313*, B3402, B3403*, B3413*, B3502, B3503*, B3513*, B3602, B3603*, B3613*, B3702, B3703*, B3713*, B3802, B3803*, B3813*

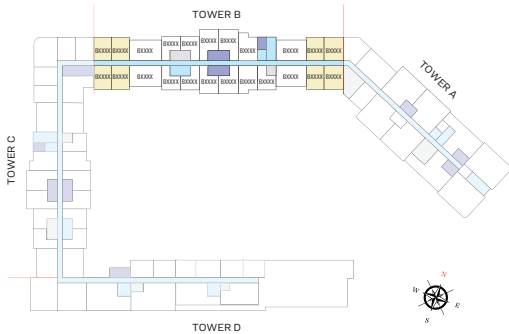
* These apartments have mirrored units plans of the above

1 BEDROOM APARTMENT

TYPE A (with powder room + balcony)

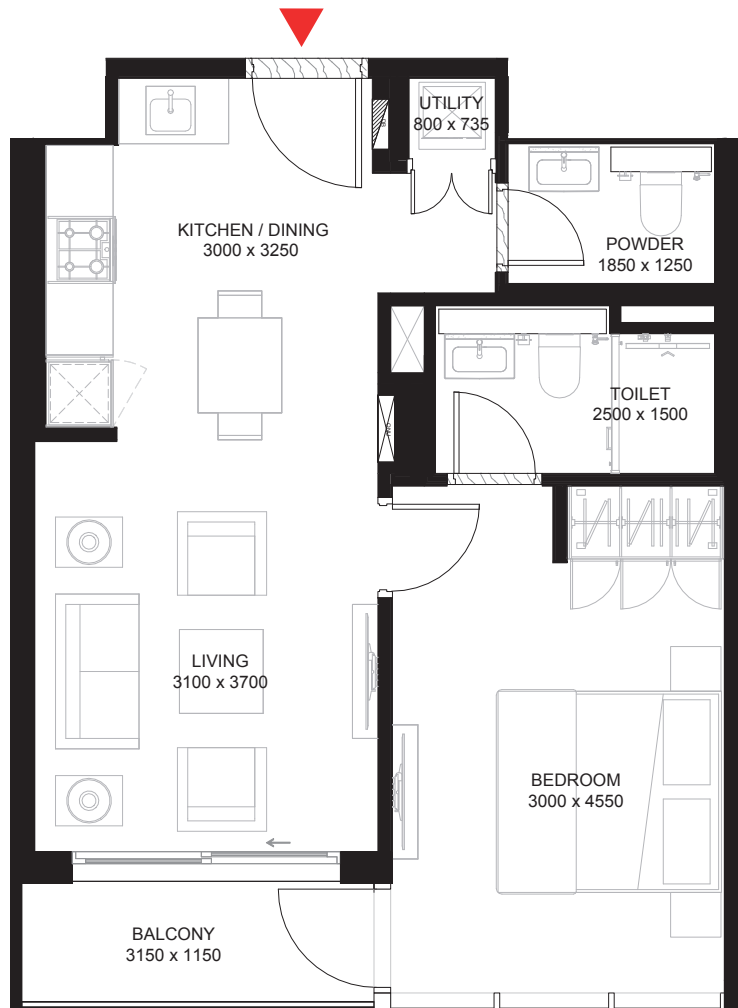
TOTAL SALEABLE AREA

SIZE RANGE = 572.42 SQ.FT. - 589.22 SQ.FT.



LEVEL 07 - 19

UNIT



List of unit numbers with this unit plan:

VIEWS

Amenities

B0705, B0706*, B0718, B0719*, B0805, B0806*, B0818, B0819*, B0905, B0906*, B0918, B0919*, B1005, B1006*, B1018, B1019*, B1105, B1106*, B1118, B1119, B1205, B1206*, B1218, B1219*, B1305, B1306*

Downtown, BK, Hartland, Ras Al Khor
B1514*, B1515*, B1614*, B1615*

Downtown, Hartland, Ras Al Khor
B0716*, B0717*, B0816*, B0817*, B0916*, B0917*, B1016*, B1017*, B1116*, B1117*, B1216*, B1217*, B1314*, B1315*, B1414*, B1415*

Hartland

B0707*, B0708*, B0807*, B0808*, B0907*, B0908*

Hartland, Ras Al Khor

B1007*, B1008*, B1107*, B1108*, B1207*, B1208*

Amenities, Waterfront

B1316*, B1317*, B1405, B1406*, B1416, B1417*, B1505, B1506*, B1516, B1517*, B1605, B1606*, B1616, B1617*, B1705, B1706*, B1714, B1715*, B1812, B1813*, B1910, B1911*

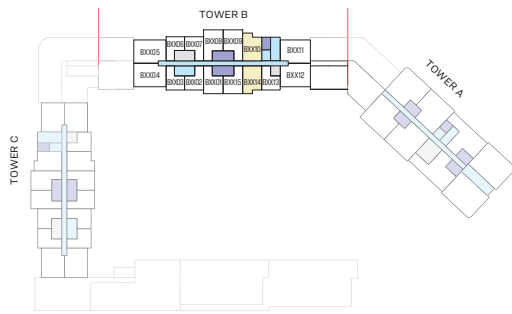
* These apartments have mirrored units plans of the above

1 BEDROOM APARTMENT

TYPE A (with study room + balcony)

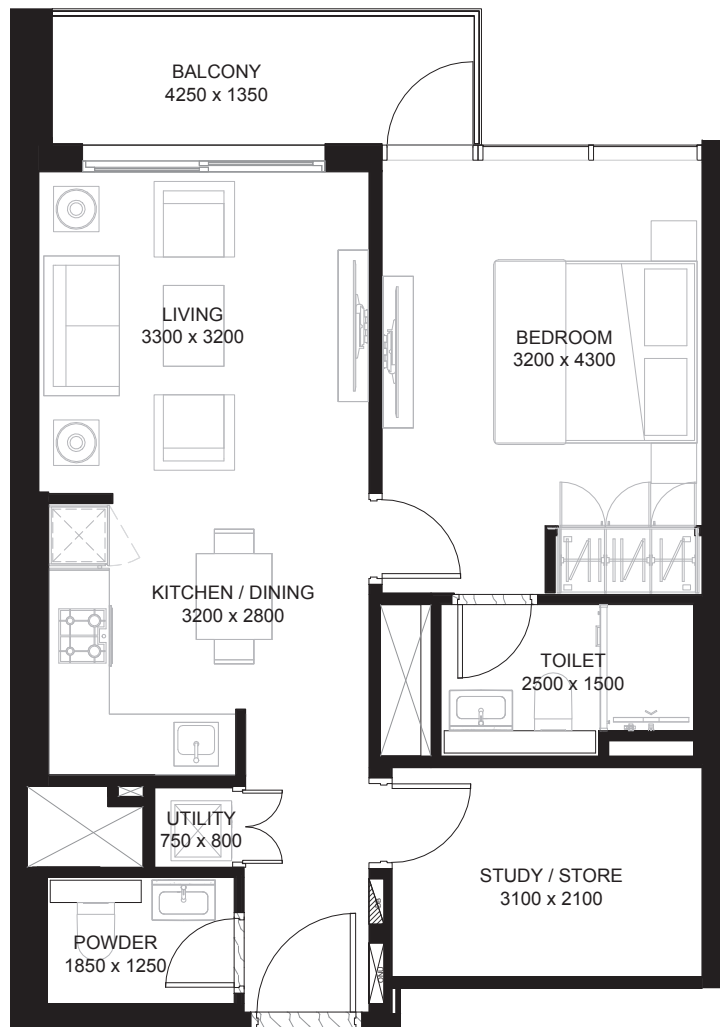
TOTAL SALEABLE AREA

SIZE RANGE = 678.34 SQ.FT. - 684.48 SQ.FT.



LEVEL 25-38

UNIT



List of unit numbers with this unit plan:

VIEWS

Downtown, BK, Hartland, Ras Al Khor
 B2510, B2610, B2710, B2810, B2910, B3010, B3110, B3210, B3310, B3410, B3510, B3610, B3710, B3810

Amenities, Waterfront
 B2514*, B2614*, B2714*, B2814*, B2914*, B3014*, B3114*, B3214*, B3314*, B3414*, B3514*, B3614*, B3714*, B3814*

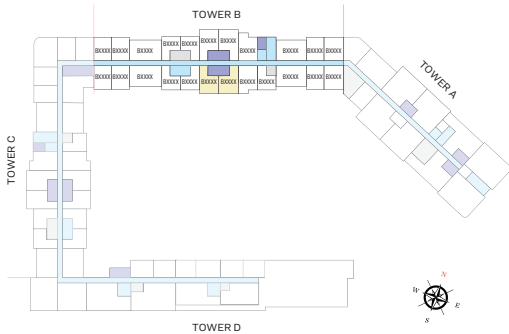
* These apartments have mirrored units plans of the above

1 BEDROOM APARTMENT

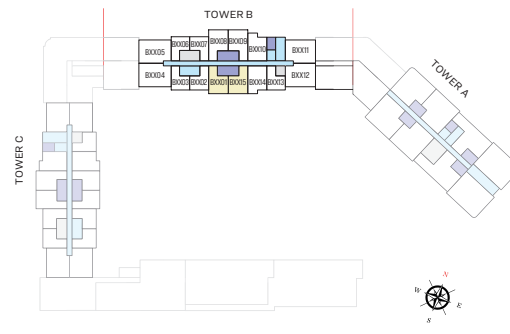
TYPE B (with powder room + balcony)

TOTAL SALEABLE AREA

SIZE RANGE = 590.51 SQ.FT. - 592.77 SQ.FT.

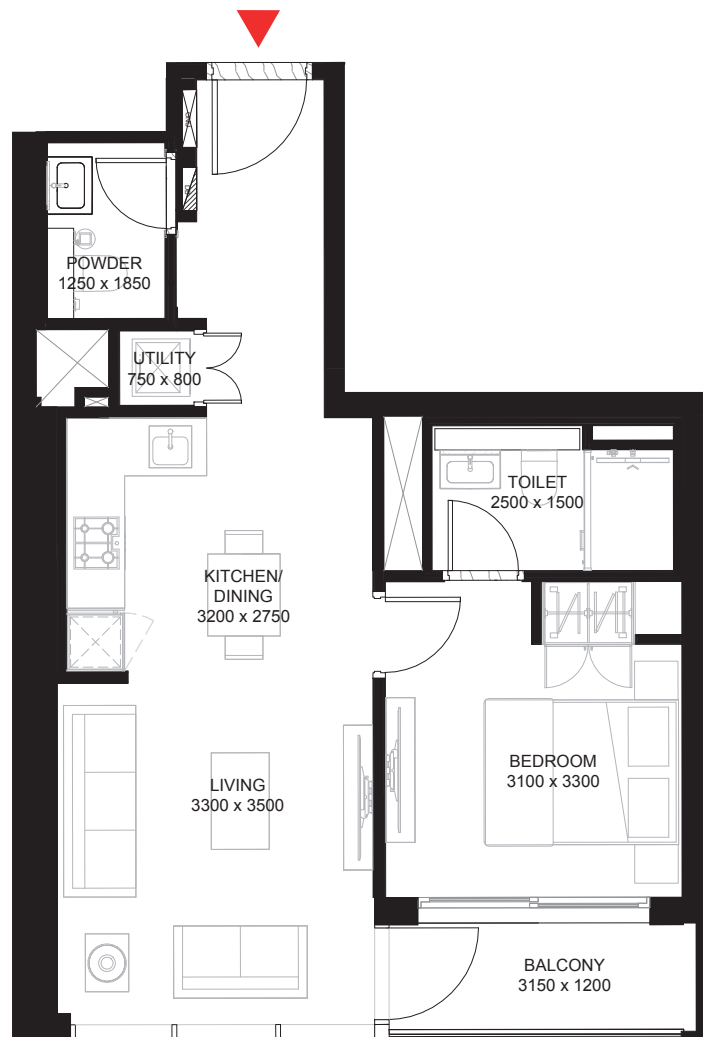


LEVEL 07 - 19



LEVEL 25-38

UNIT



List of unit numbers with this unit plan:

VIEWS

Amenities

B0701, B0723*, B0801, B0823*, B0901, B0923*, B1001, B1023*, B1101, B1123*, B1201, B1223*

Amenities, Waterfront

B1301, B1321*, B1401, B1421*, B1501, B1521*, B1601, B1621*, B1701, B1719*, B1801, B1817*, B1901, B1915*, B2501, B2515*, B2601, B2615*, B2701, B2715*, B2801, B2815*, B2901, B2915*, B3001, B3015*, B3101, B3115*, B3201, B3215*, B3301, B3315*, B3401, B3415*, B3501, B3515*, B3601, B3615*, B3701, B3715*, B3801, B3815*

* These apartments have mirrored units plans of the above

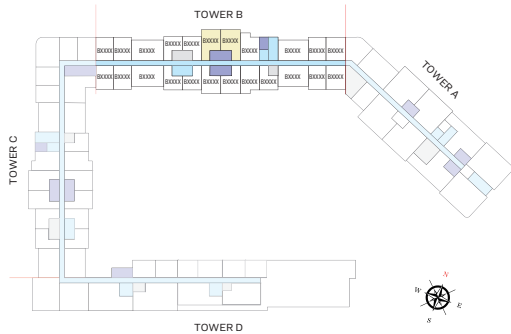
Disclaimer: 1. Information is subject to change without notice, at developer's absolute discretion. 2. Drawings are not to scale. 3. All images used are for illustrative purpose only and do not represent the actual size, features, specifications 4. The developer reserves the right to make revisions/ alterations, at its absolute discretion, without any liability whatsoever.

1 BEDROOM APARTMENT

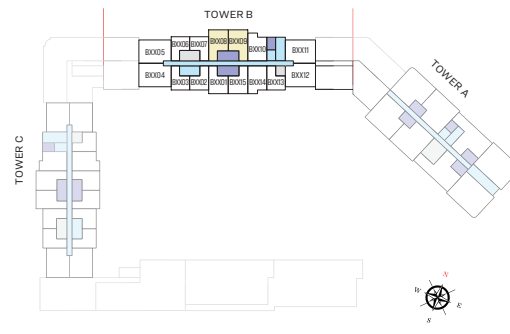
TYPE B (with study room + balcony)

TOTAL SALEABLE AREA

SIZE RANGE = 689.64 SQ.FT. - 692.12 SQ.FT.

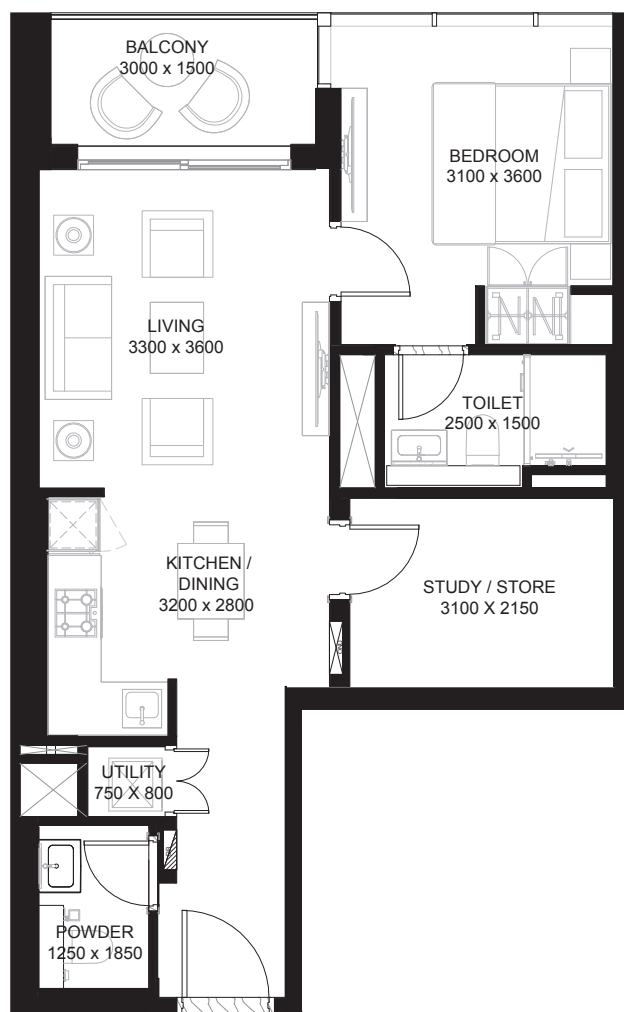


LEVEL 07 - 19



LEVEL 25-38

UNIT



List of unit numbers with this unit plan:

VIEWS

Downtown, BK, Hartland, Ras Al Khor

B1510, B1511*, B1610, B1611*, B1710, B1711*, B1808, B1809*, B1906, B1907*, B2508, B2509*, B2608, B2609*, B2708, B2709*, B2808, B2809*, B2908, B2909*, B3008, B3009*, B3108, B3109*, B3208, B3209*, B3308, B3309*, B3408, B3409*, B3508, B3509*, B3608, B3609*, B3708, B3709*, B3808, B3809*

Downtown, Hartland, Ras Al Khor

B0712, B0713*, B0812, B0813*, B0912, B0913*, B1012, B1013*, B1112, B1113*, B1212, B1213*, B1310, B1311*, B1410, B1411*

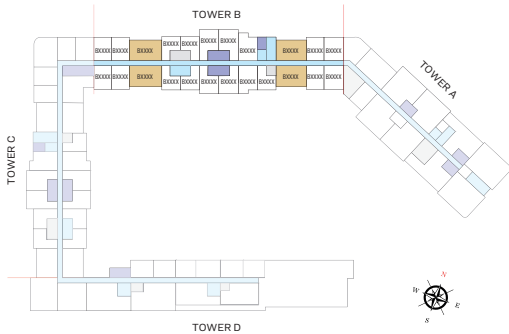
* These apartments have mirrored units plans of the above

2 BEDROOM APARTMENT

TYPE A (with balcony)

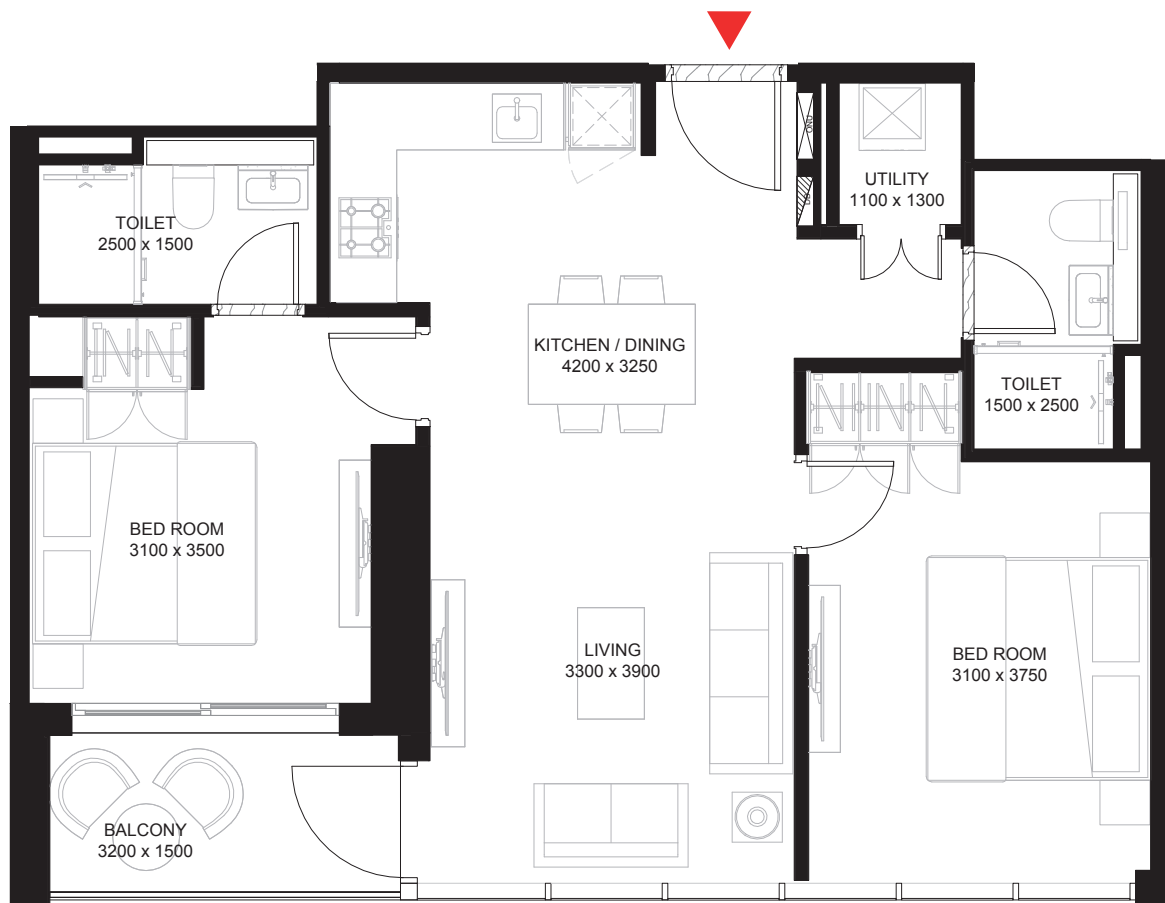
TOTAL SALEABLE AREA

SIZE RANGE = 808.26 SQ.FT. - 821.93 SQ.FT.



LEVEL 07 - 19

UNIT



List of unit numbers with this unit plan:

VIEWS

Amenities

B0704, B0720*, B0804, B0820*, B0904, B0920*, B1004, B1020*, B1104, B1120*, B1204, B1220*, B1304

Downtown, BK, Hartland, Ras Al Khor

B1507*, B1513*, B1607*, B1613*, B1707*, B1713*, B1805*, B1811*, B1909*

Downtown, Hartland, Ras Al Khor

B0715*, B0815*, B0915*, B1015*, B1115*, B1215*, B1313*, B1413*

Hartland

B0709*, B0809*, B0909*

Hartland, Ras Al Khor

B1009*, B1109*, B1209*, B1307*, B1407*

Amenities, Waterfront

B1318*, B1404, B1418*, B1504, B1518*, B1604, B1618*, B1704, B1716*, B1804, B1814*, B1912*

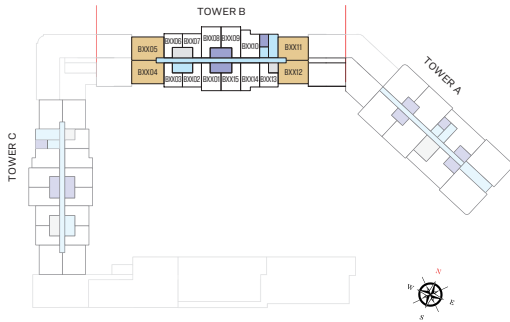
* These apartments have mirrored units plans of the above

2 BEDROOM APARTMENT

TYPE A (with study room + balcony)

TOTAL SALEABLE AREA

SIZE RANGE = 1049.37 sq.ft. – 1053.79 sq.ft.



LEVEL 25-38

UNIT



List of unit numbers with this unit plan:

VIEWS

Downtown, BK, Hartland, Amenities, Waterview

B2504*, B2604*, B2704*, B2804*, B2904*, B3004*, B3104*, B3204*, B3304*, B3404*, B3504*, B3604*, B3704*, B3804*

Amenities, Waterview, Ras Al Khor

B2512*, B2612*, B2712*, B2812*, B2912*, B3012*, B3112*, B3212*, B3312*, B3412*, B3512*, B3612*, B3712*, B3812*

Downtown, BK, Hartland, Ras Al Khor

B2505, B2511*, B2605, B2611*, B2705, B2711*, B2805, B2811*, B2905, B2911*, B3005, B3011*, B3105, B3111*, B3205, B3211*, B3305, B3311*, B3405, B3411*, B3505, B3511*, B3605, B3611*, B3705, B3711*, B3805, B3811*

* These apartments have mirrored units plans of the above

SOBHA
REALTY