

FLOOR PLANS

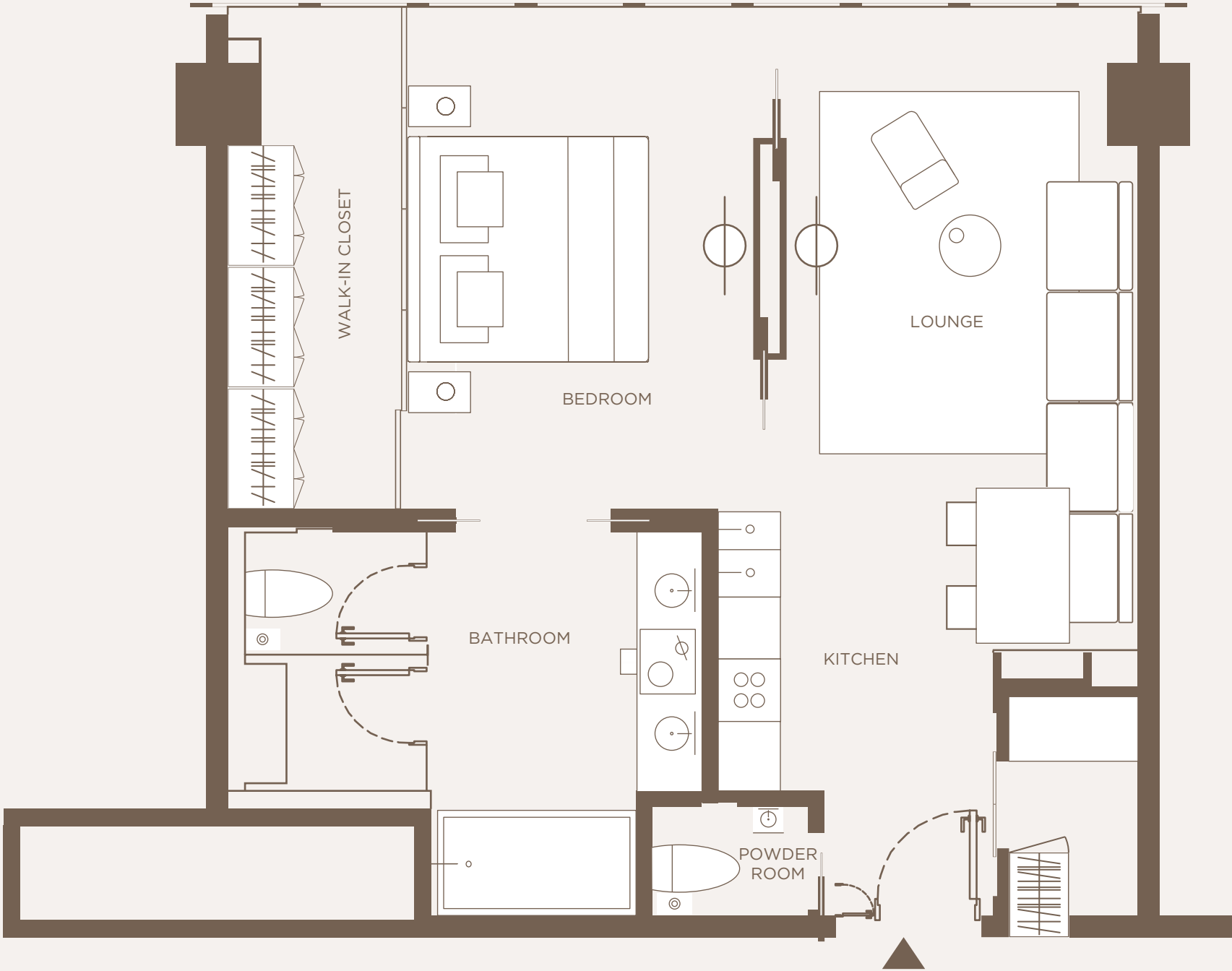
One&Only

PRIVATE HOMES

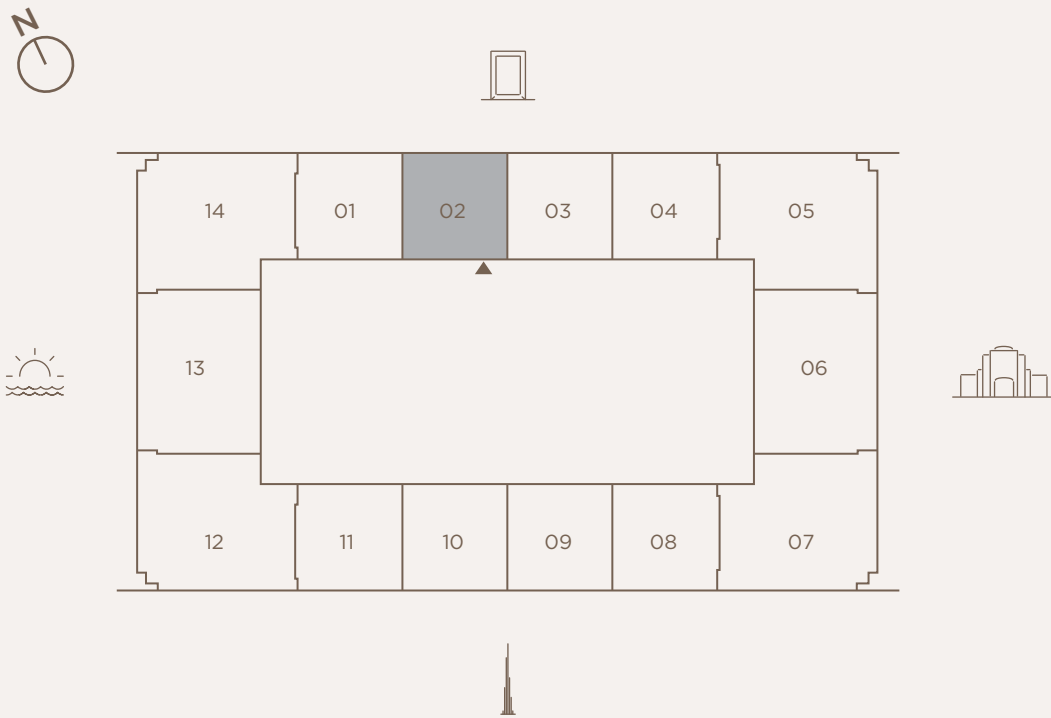
One Za'abeel, Dubai

1 BEDROOM - TYPE AP1

SUITE AREA	79.62 SQ.M.	857 SQ.FT.
BALCONY AREA	0.00 SQ.M.	0.00 SQ.FT.
TOTAL AREA	79.62 SQ.M.	857 SQ.FT.

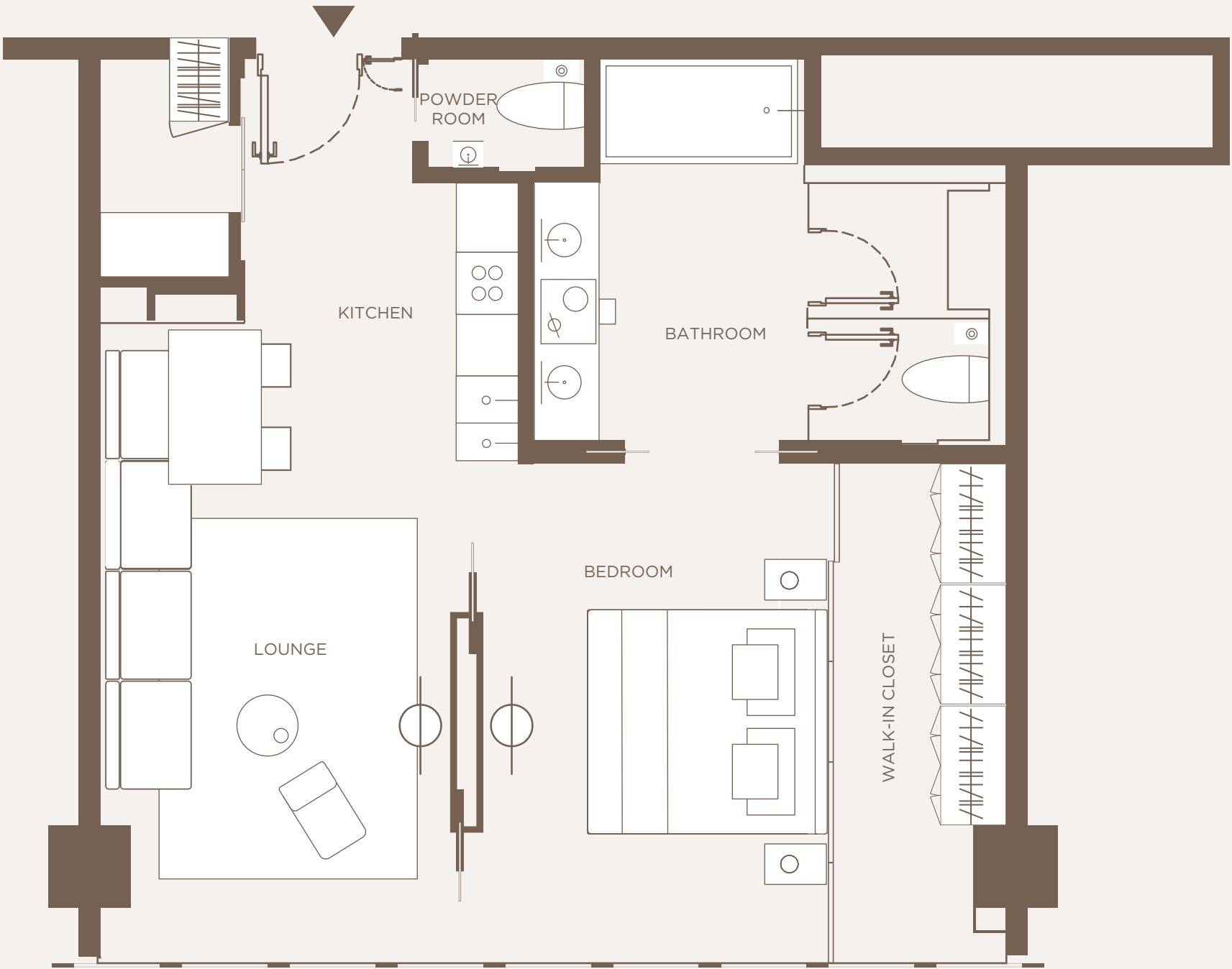


KEY PLAN

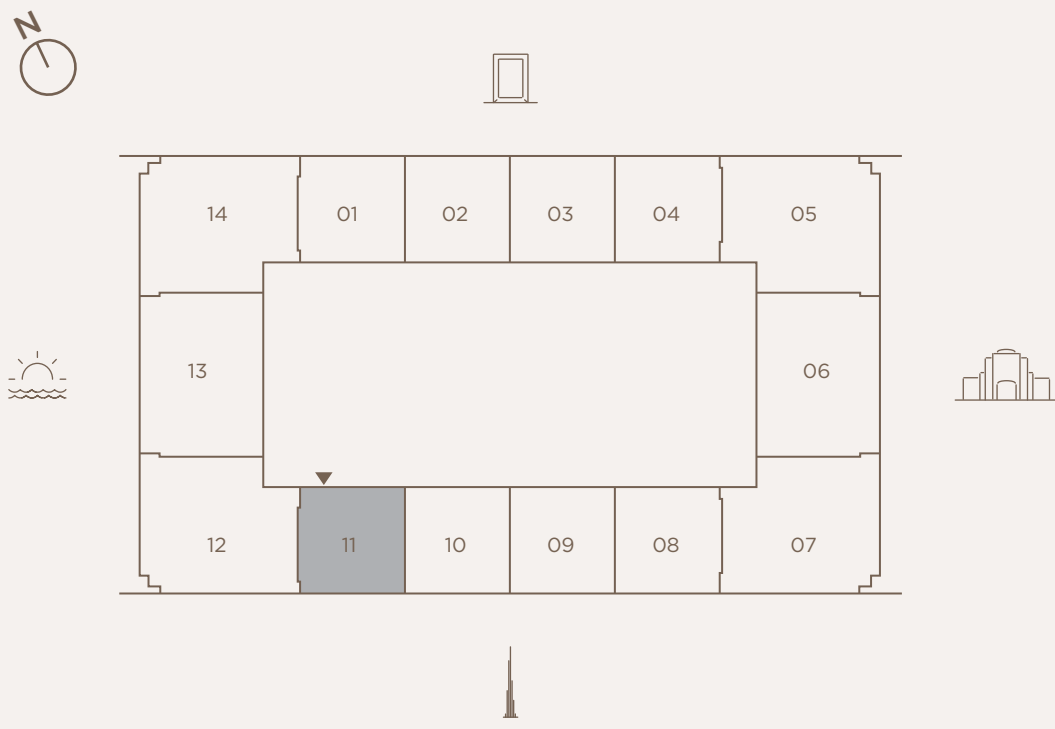


1 BEDROOM - TYPE AP1.1

SUITE AREA	80.89 SQ.M.	871 SQ.FT.
BALCONY AREA	0.00 SQ.M.	0.00 SQ.FT.
TOTAL AREA	80.89 SQ.M.	871 SQ.FT.



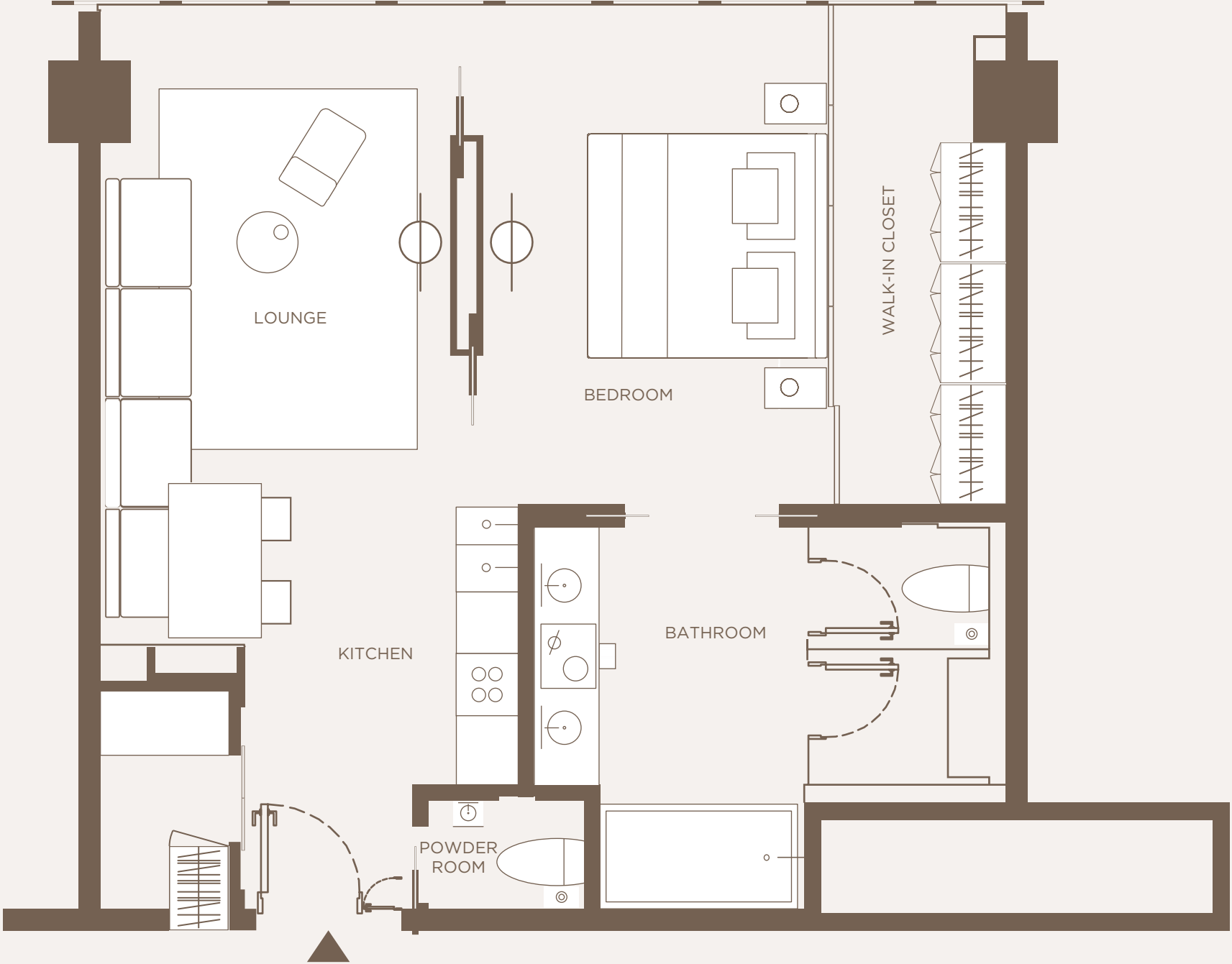
KEY PLAN



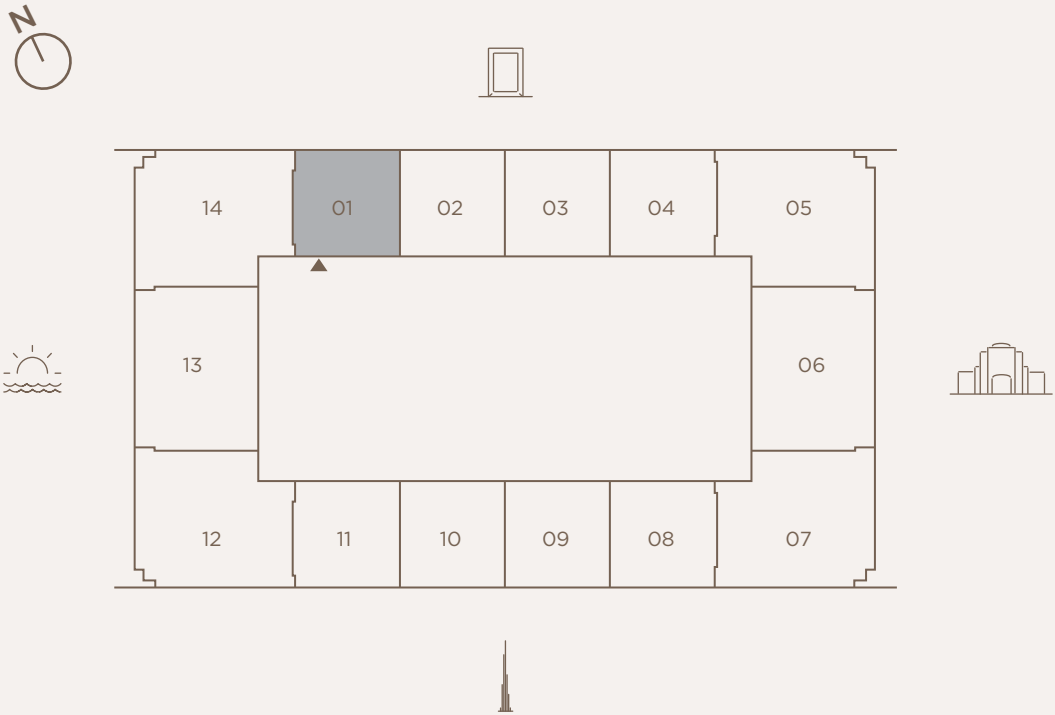
DISCLAIMER:
FLOOR AREA MEASUREMENTS APPROXIMATE AND SUBJECT TO CHANGE

1 BEDROOM - TYPE AP1.2

SUITE AREA	80.89 SQ.M.	871 SQ.FT.
BALCONY AREA	0.00 SQ.M.	0.00 SQ.FT.
TOTAL AREA	80.89 SQ.M.	871 SQ.FT.



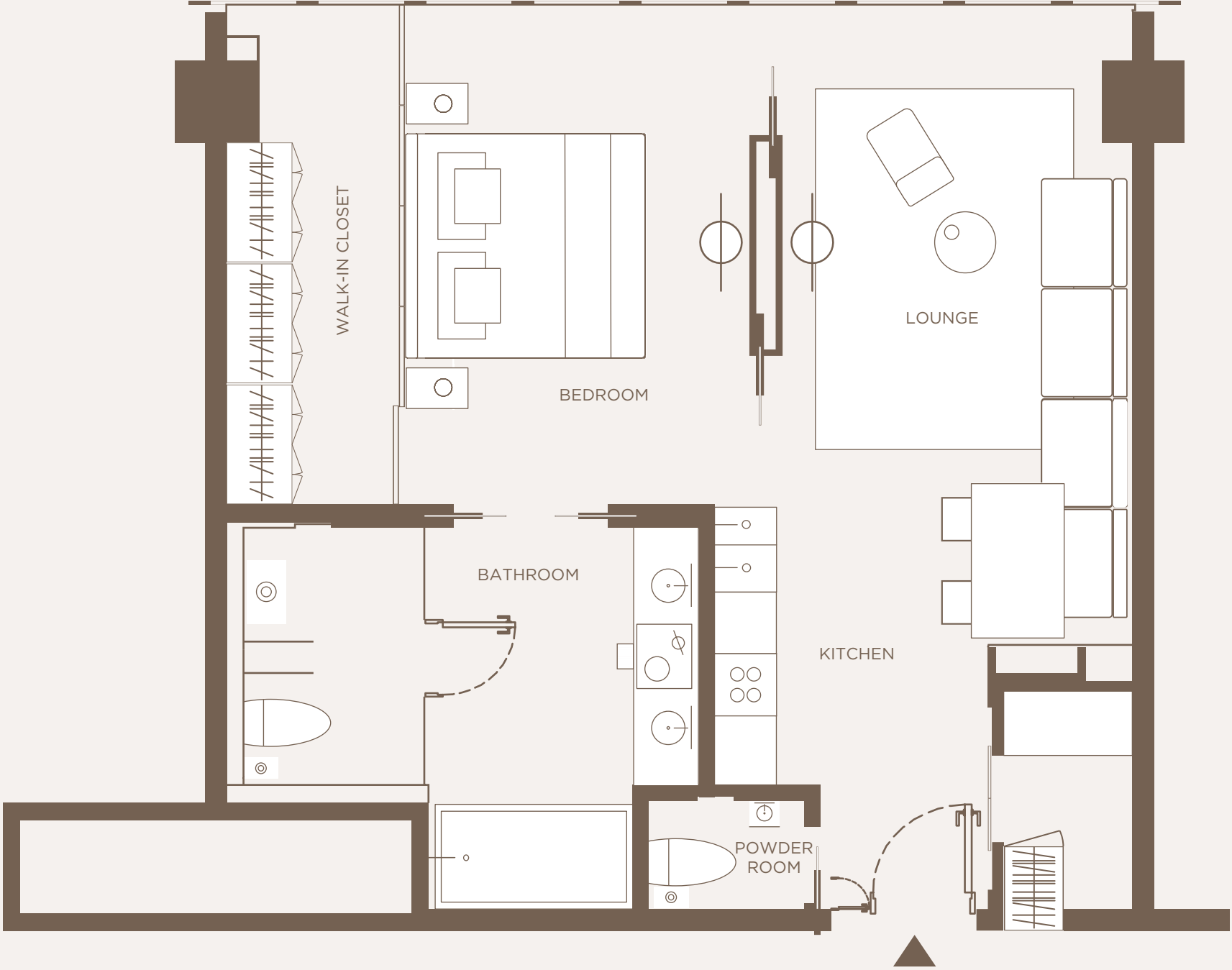
KEY PLAN



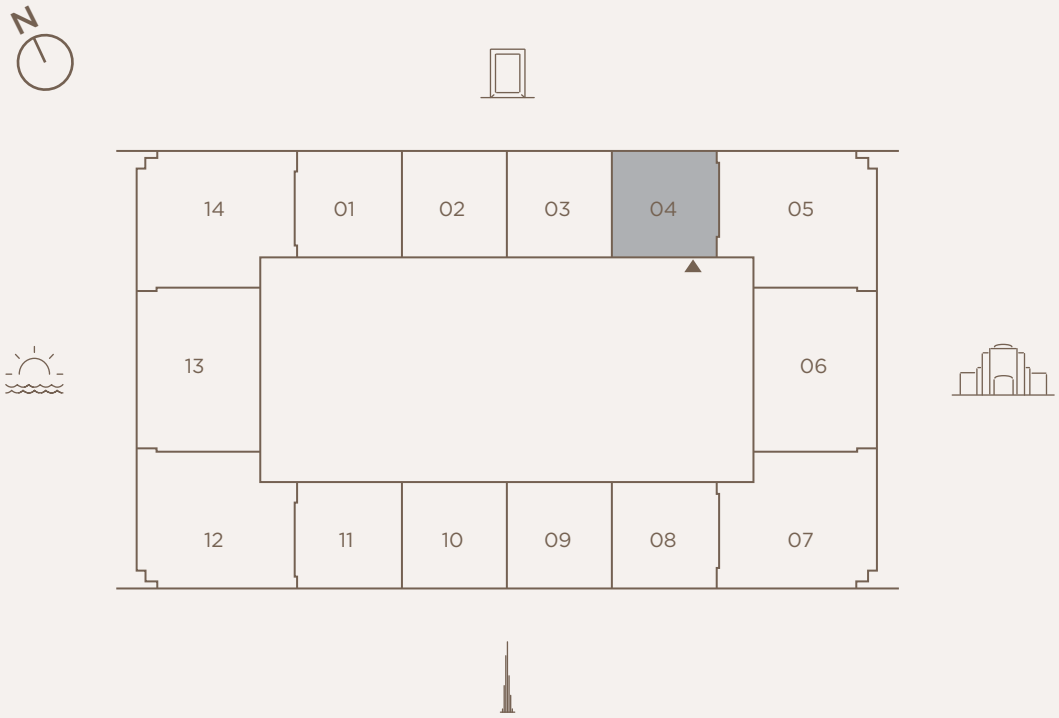
DISCLAIMER:
FLOOR AREA MEASUREMENTS APPROXIMATE AND SUBJECT TO CHANGE

1 BEDROOM - TYPE AP1.3

SUITE AREA	80.89 SQ.M.	871 SQ.FT.
BALCONY AREA	0.00 SQ.M.	0.00 SQ.FT.
TOTAL AREA	80.89 SQ.M.	871 SQ.FT.



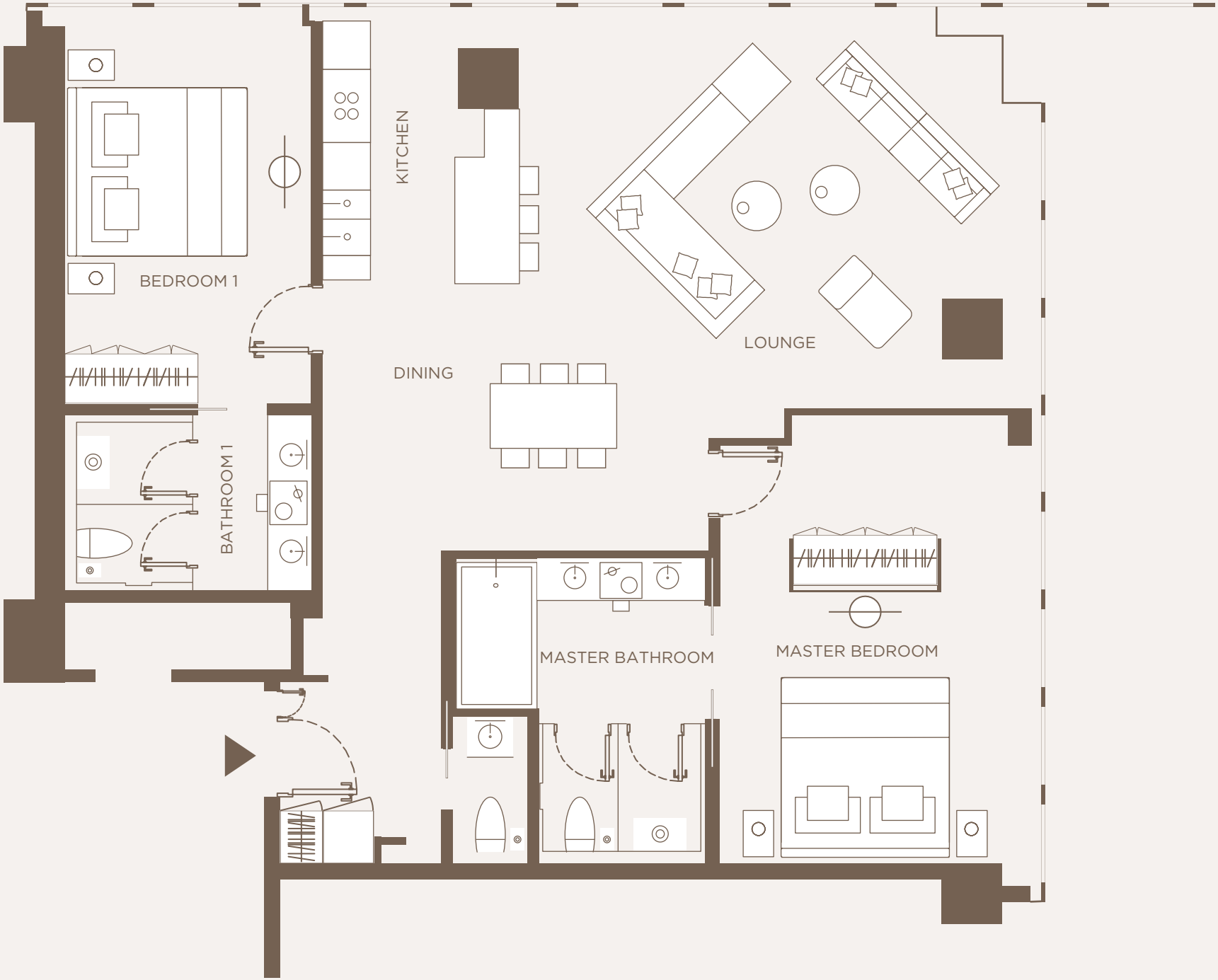
KEY PLAN



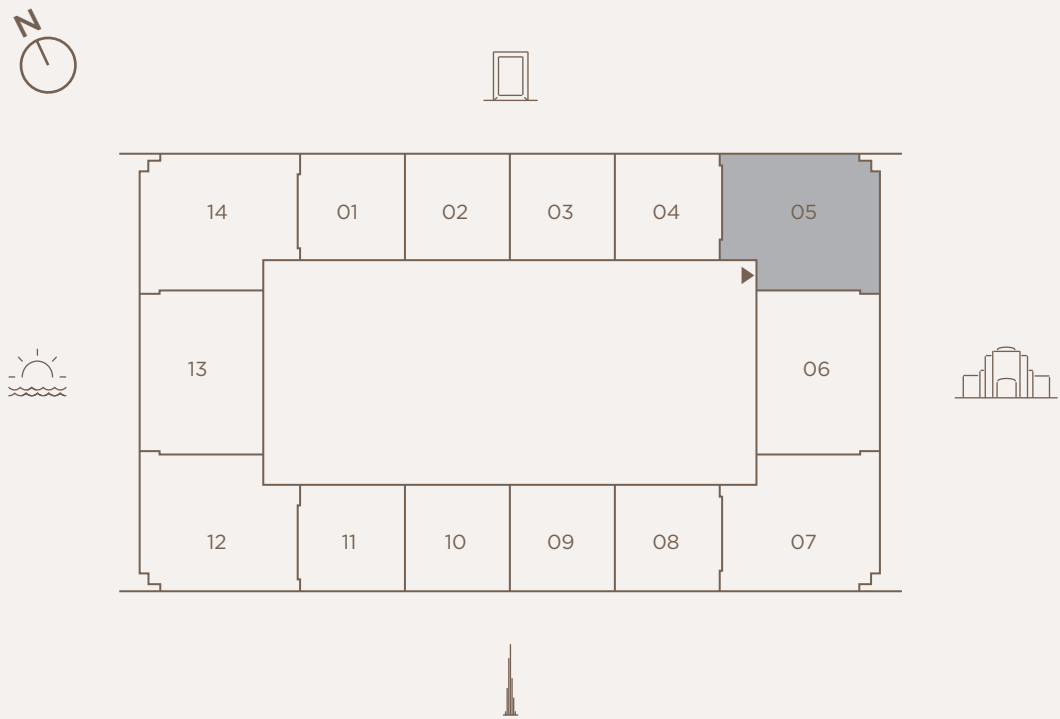
DISCLAIMER:
FLOOR AREA MEASUREMENTS APPROXIMATE AND SUBJECT TO CHANGE

2 BEDROOM - TYPE AP2

SUITE AREA	143.11 SQ.M.	1,540 SQ.FT.
BALCONY AREA	0.00 SQ.M.	0.00 SQ.FT.
TOTAL AREA	143.11 SQ.M.	1,540 SQ.FT.

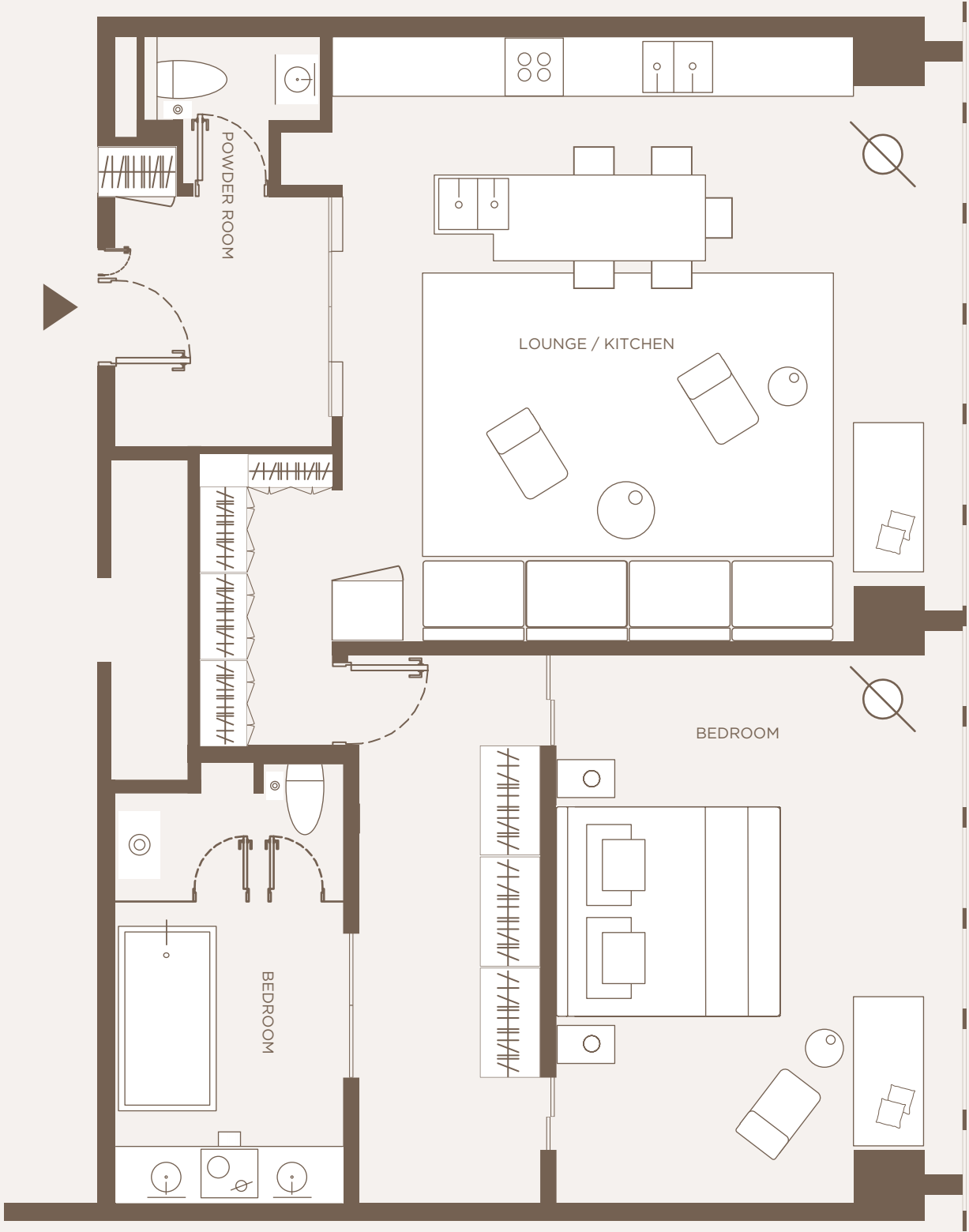


KEY PLAN

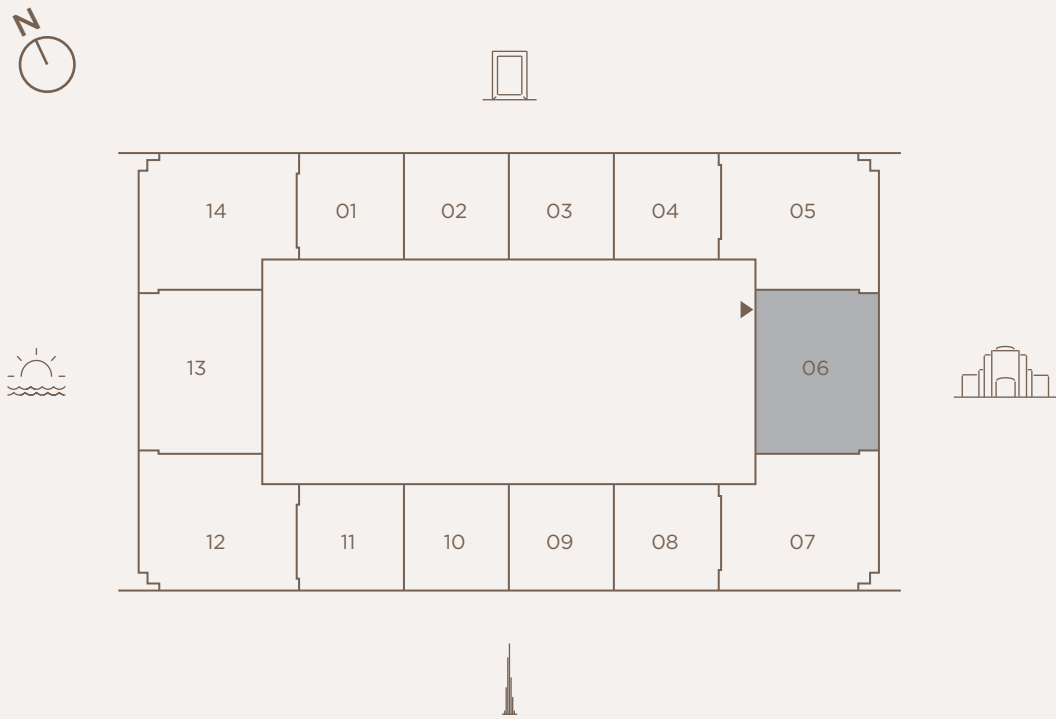


1 BEDROOM - TYPE AP3

SUITE AREA	140.52 SQ.M.	1,513 SQ.FT.
BALCONY AREA	0.00 SQ.M.	0.00 SQ.FT.
TOTAL AREA	140.52 SQ.M.	1,513 SQ.FT.



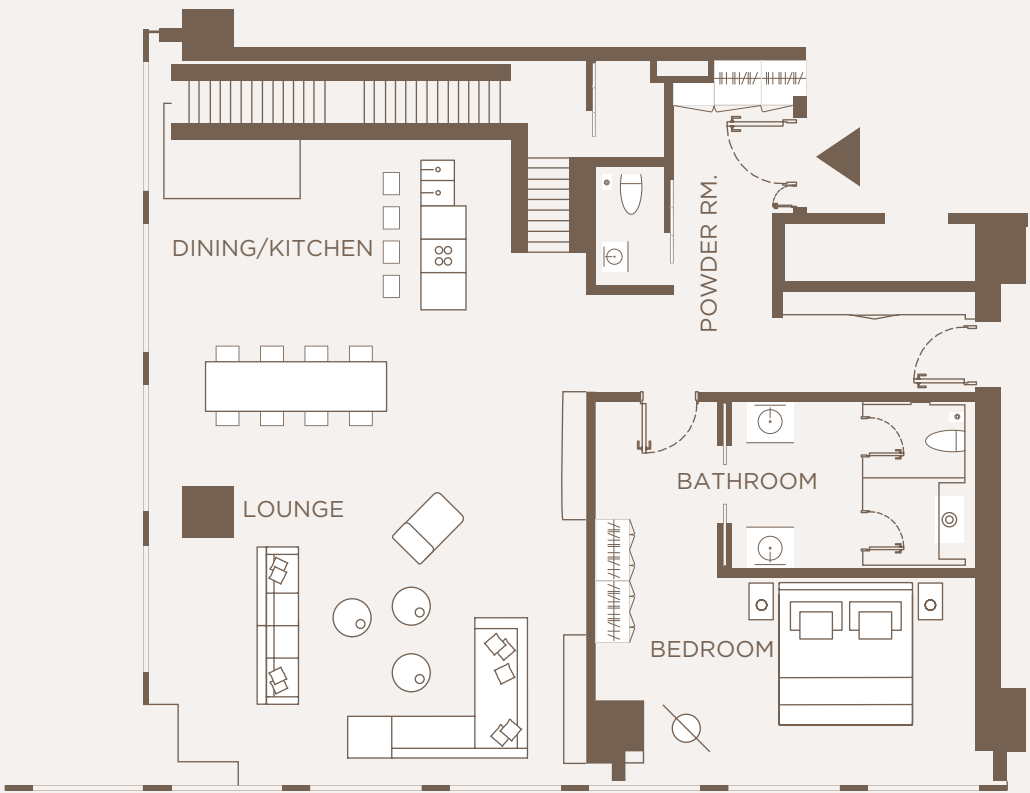
KEY PLAN



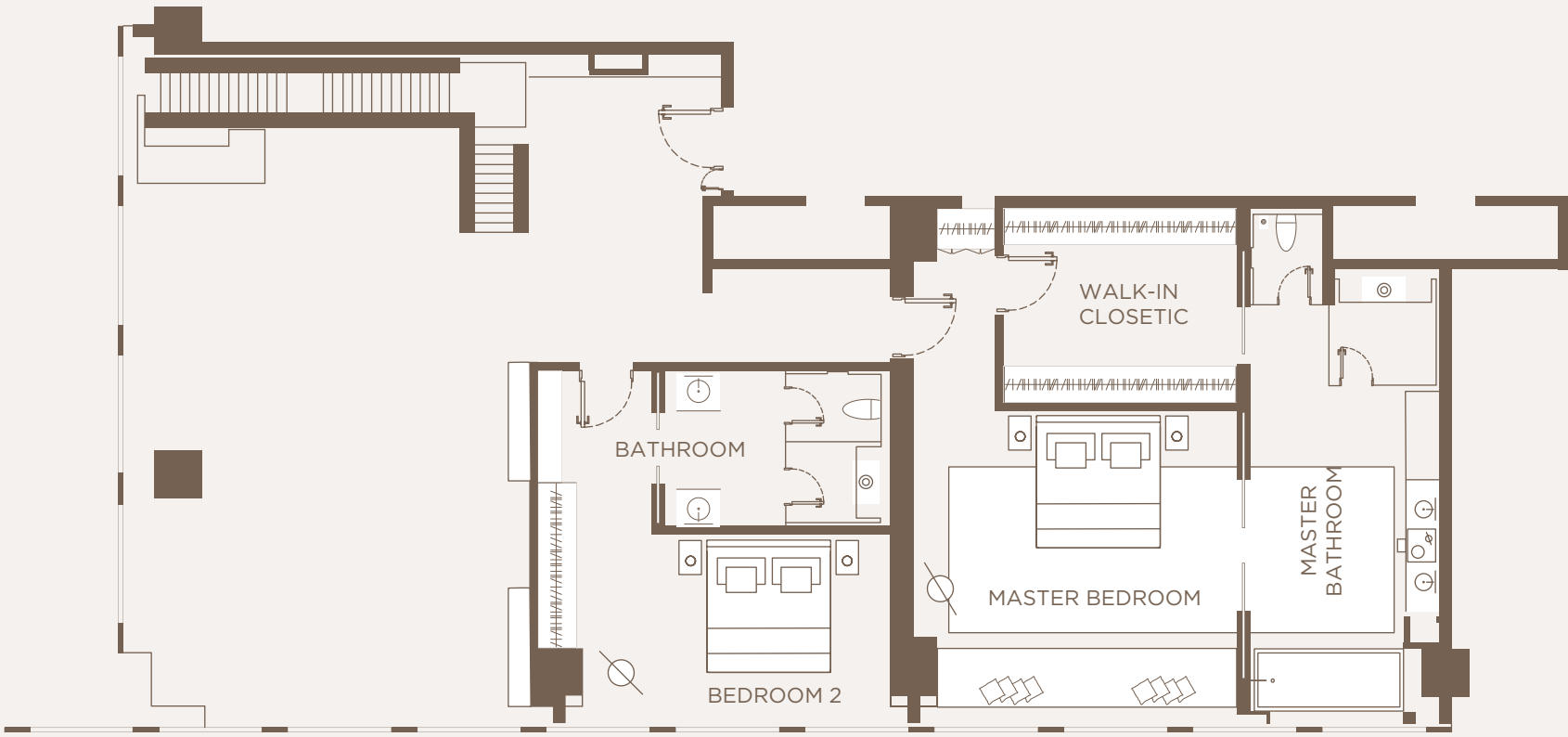
3 BEDROOMS - TYPE AP5

SUITE AREA	314.37 SQ.M.	3,384 SQ.FT.
BALCONY AREA	0.00 SQ.M.	0.00 SQ.FT.
TOTAL AREA	314.37 SQ.M.	3,384 SQ.FT.

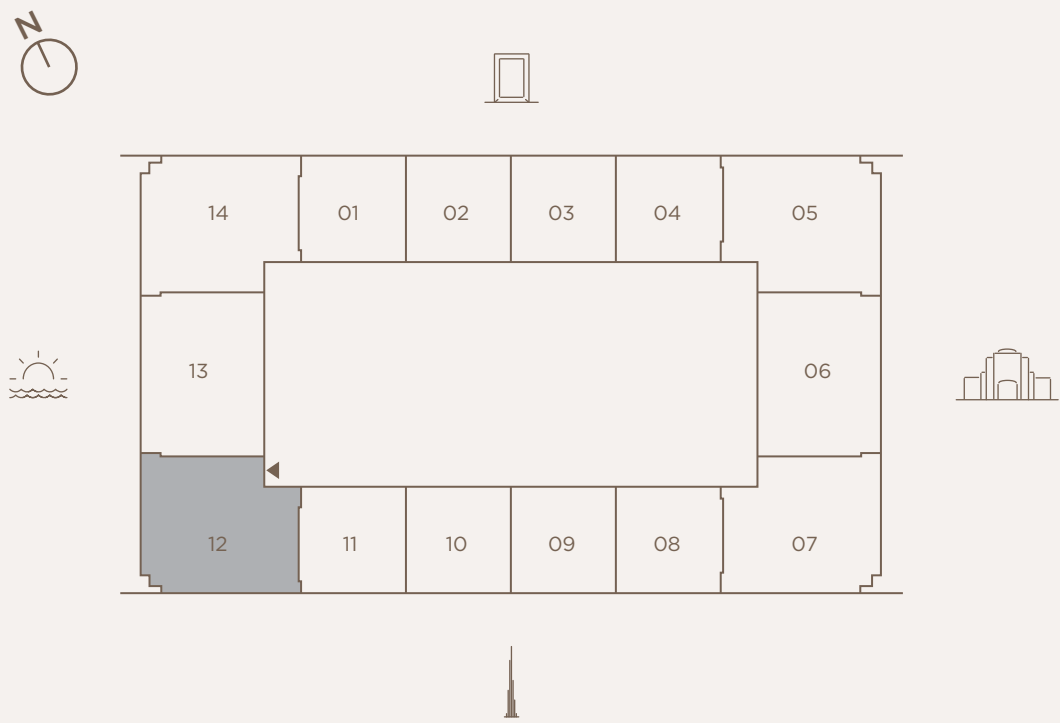
LOWER LEVEL



UPPER LEVEL



KEY PLAN



DISCLAIMER

While One Zaabeel LLC ("the Company") endeavors to ensure that the information provided in this brochure of the One Za'abeel Project is correct, you acknowledge and agree that the information and materials contained in this brochure, and the terms, conditions, and descriptions that appear, are subject to change in the absolute discretion of the Company. Not all brands, products, services and/or access rights that may be described in this brochure may be available at all times or in all areas.

Your eligibility for particular products, services and/or access rights to any of the facilities (including without limitation pools and gymnasiums) at the One Za'abeel Project is subject to the final determination and acceptance of the Company and/or the Hotel operator (Kerzner International Limited), and any agreement with the Company and/or the Hotel operator (Kerzner International Limited) will be subject only to a written agreement evidencing such.

The information and materials contained herein, including text, graphics, links or other items – are provided on an "as is" and "as available" basis. As such, the Company does not warrant the accuracy, adequacy or completeness of the information and materials and expressly disclaims liability for any errors or omissions that may appear herein. Nothing in this brochure constitutes, is intended to constitute, shall be treated as constituting or shall be deemed to constitute, the Company giving any warranties of any kind, implied, express or statutory, (including but not limited to the warranties of non-infringement of third party rights, title, merchantability, fitness for a particular purpose and where relevant, freedom from computer virus), in conjunction with the information and materials in this brochure and the One Za'abeel Project generally.

To the extent permitted by UAE law, the Company excludes all representations and warranties (whether express or implied by law) in respect of this brochure and the One Za'abeel Project generally. The Company will not be liable to you under any circumstances for any actual, direct, indirect, consequential, economic or special loss or damage howsoever arising in relation to the information and materials contained in this brochure. You release the Company from all claims (whether actual or contingent, whether in the United Arab Emirates or elsewhere) that you may have from time to time against the Company arising from this brochure.

One&Only
PRIVATE HOMES
One Za'abeel, Dubai