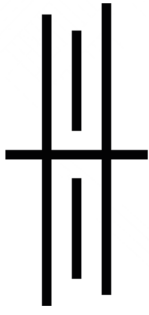




UPPER HOUSE
BY ELLINGTON

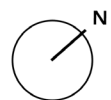
FLOOR PLANS



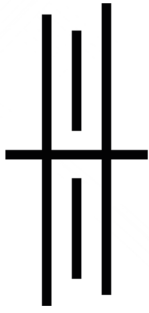


UPPER HOUSE
WEST

-  STUDIO
-  1 BEDROOM APARTMENTS
-  2 BEDROOM APARTMENTS

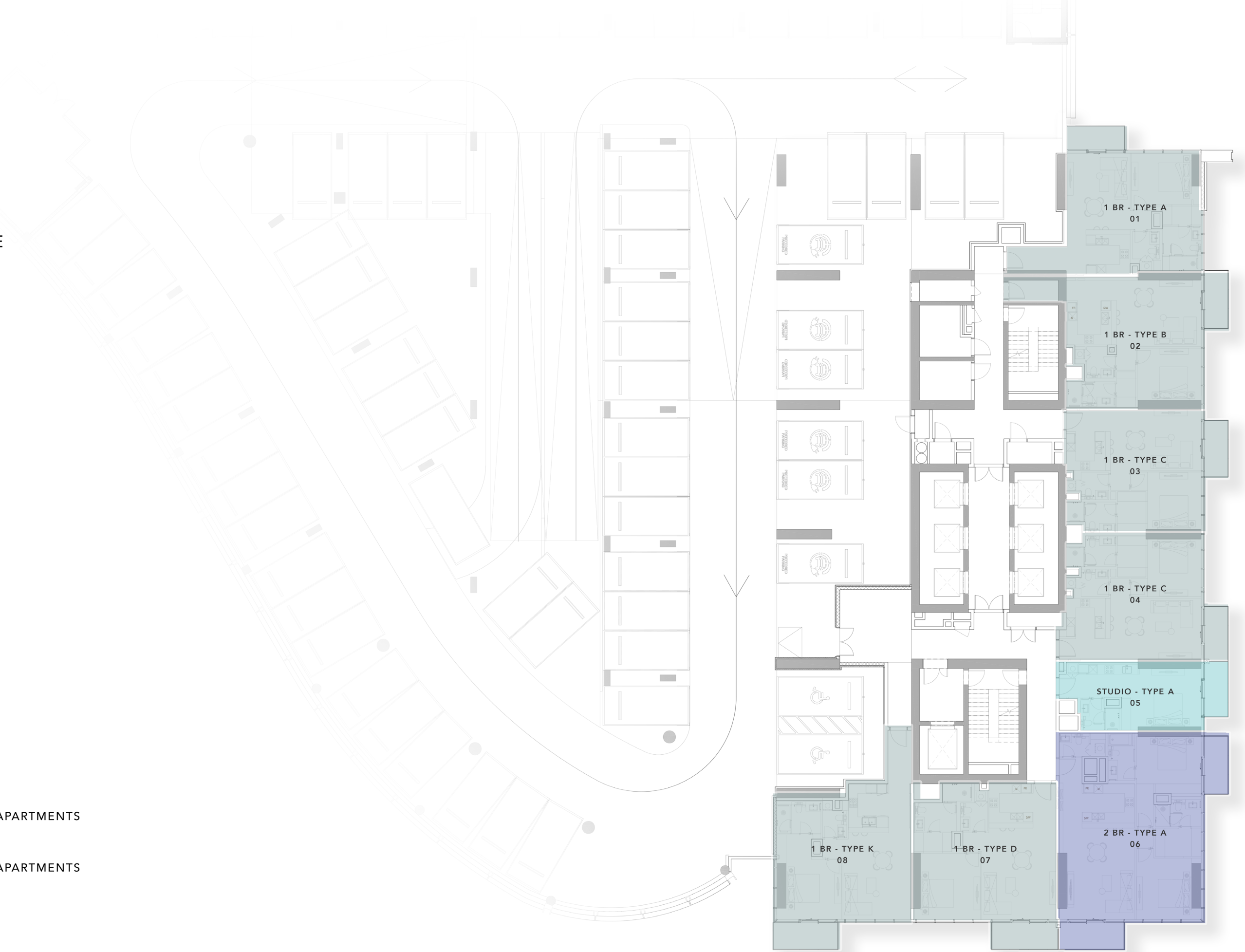
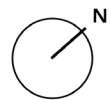


PODIUM 2 FLOOR PLAN

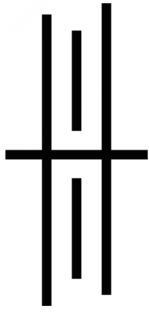


UPPER HOUSE
WEST

-  STUDIO
-  1 BEDROOM APARTMENTS
-  2 BEDROOM APARTMENTS

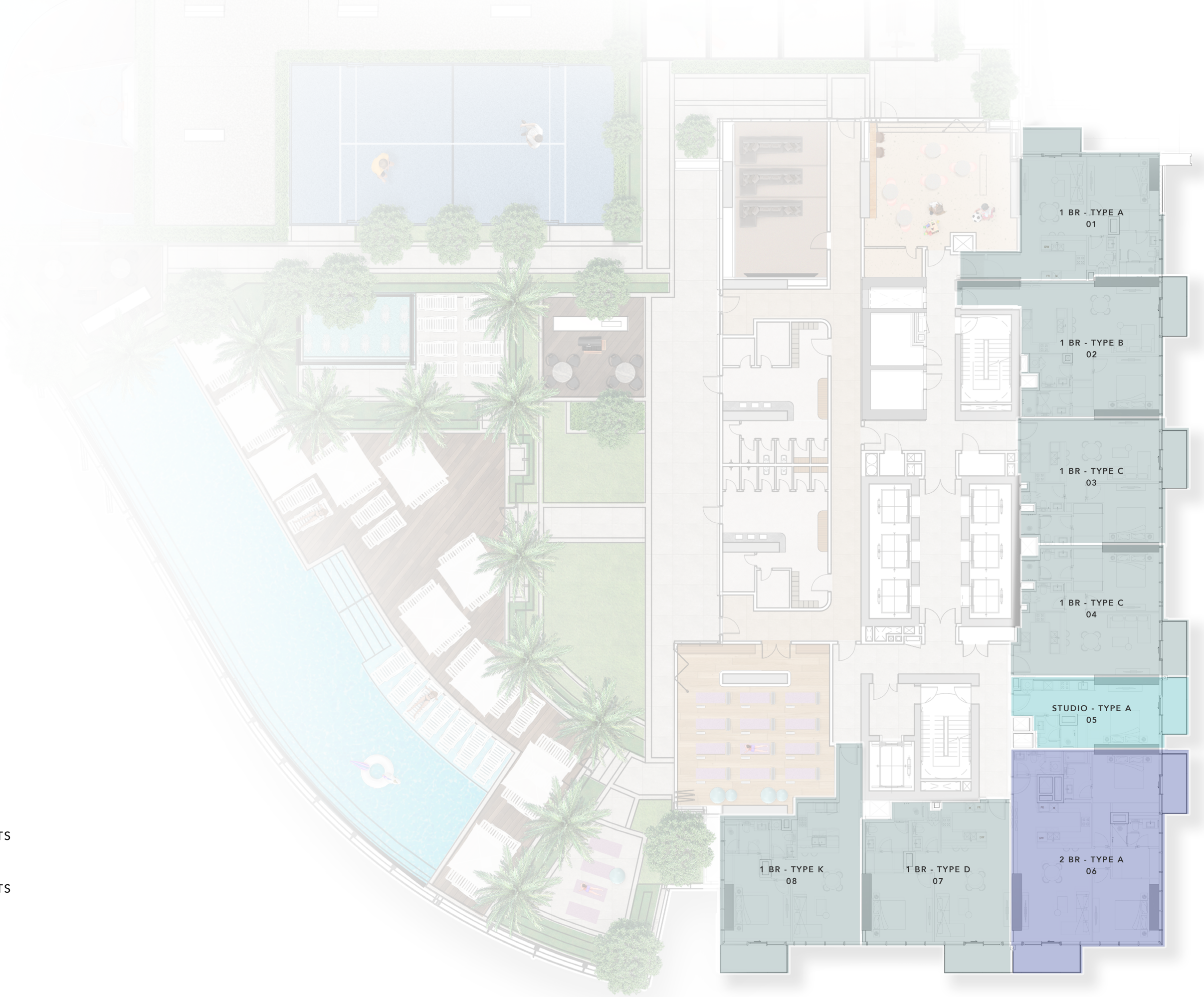
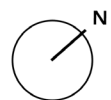


PODIUM 3 - 5 TYPICAL FLOOR PLAN

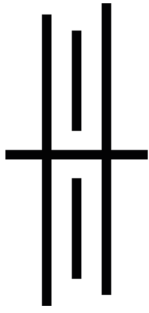


UPPER HOUSE
WEST

-  STUDIO
-  1 BEDROOM APARTMENTS
-  2 BEDROOM APARTMENTS



LEVEL 1 FLOOR PLAN



UPPER HOUSE
WEST

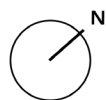


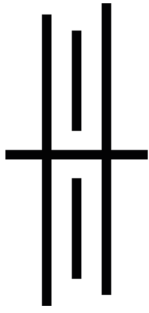
LEVEL 2 FLOOR PLAN



LEVEL 03-15 TYPICAL FLOOR PLAN

- STUDIO
- 1 BEDROOM APARTMENTS
- 2 BEDROOM APARTMENTS

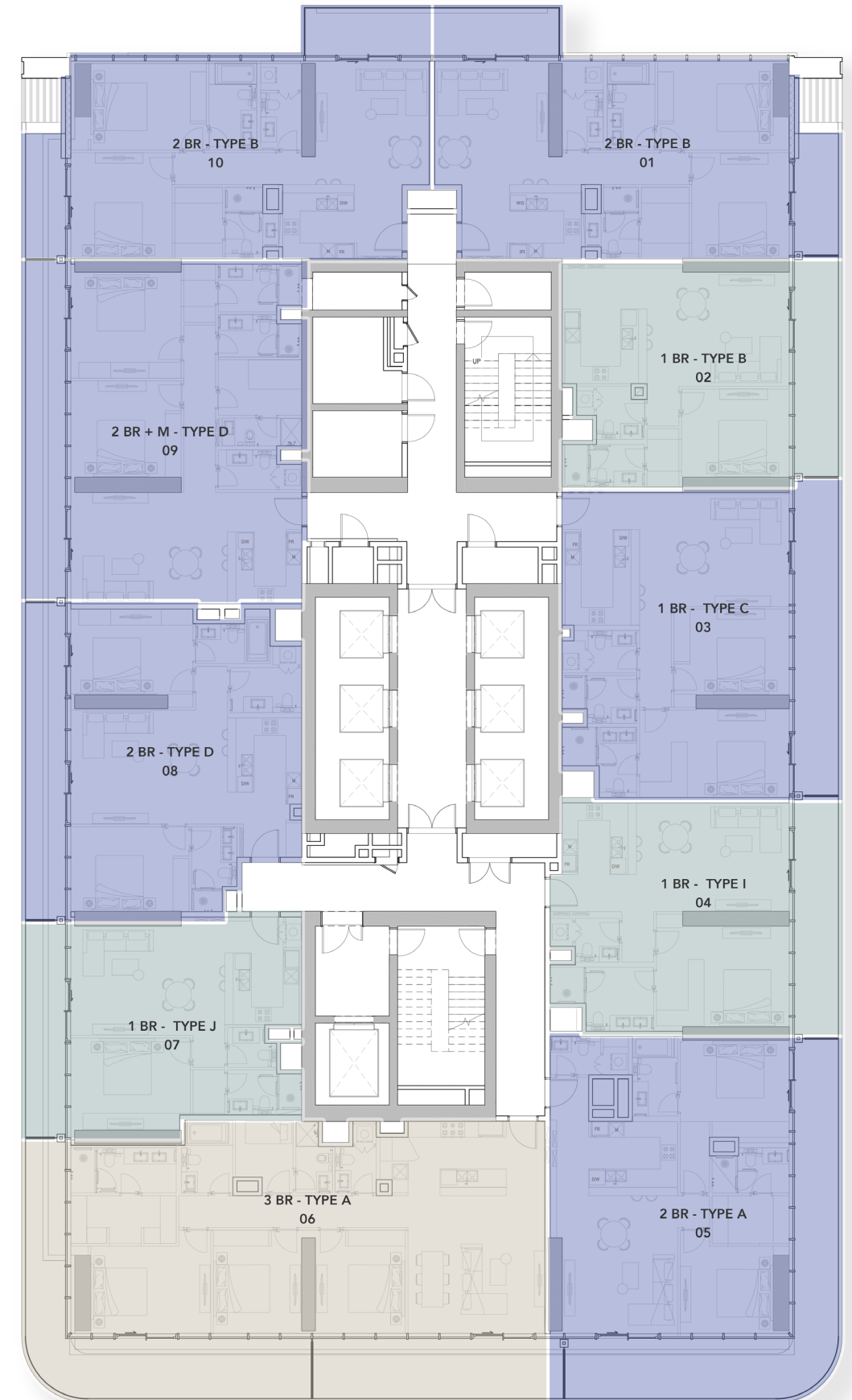




UPPER HOUSE
WEST

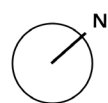


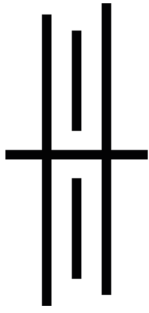
LEVEL 16 FLOOR PLAN



LEVEL 17 FLOOR PLAN

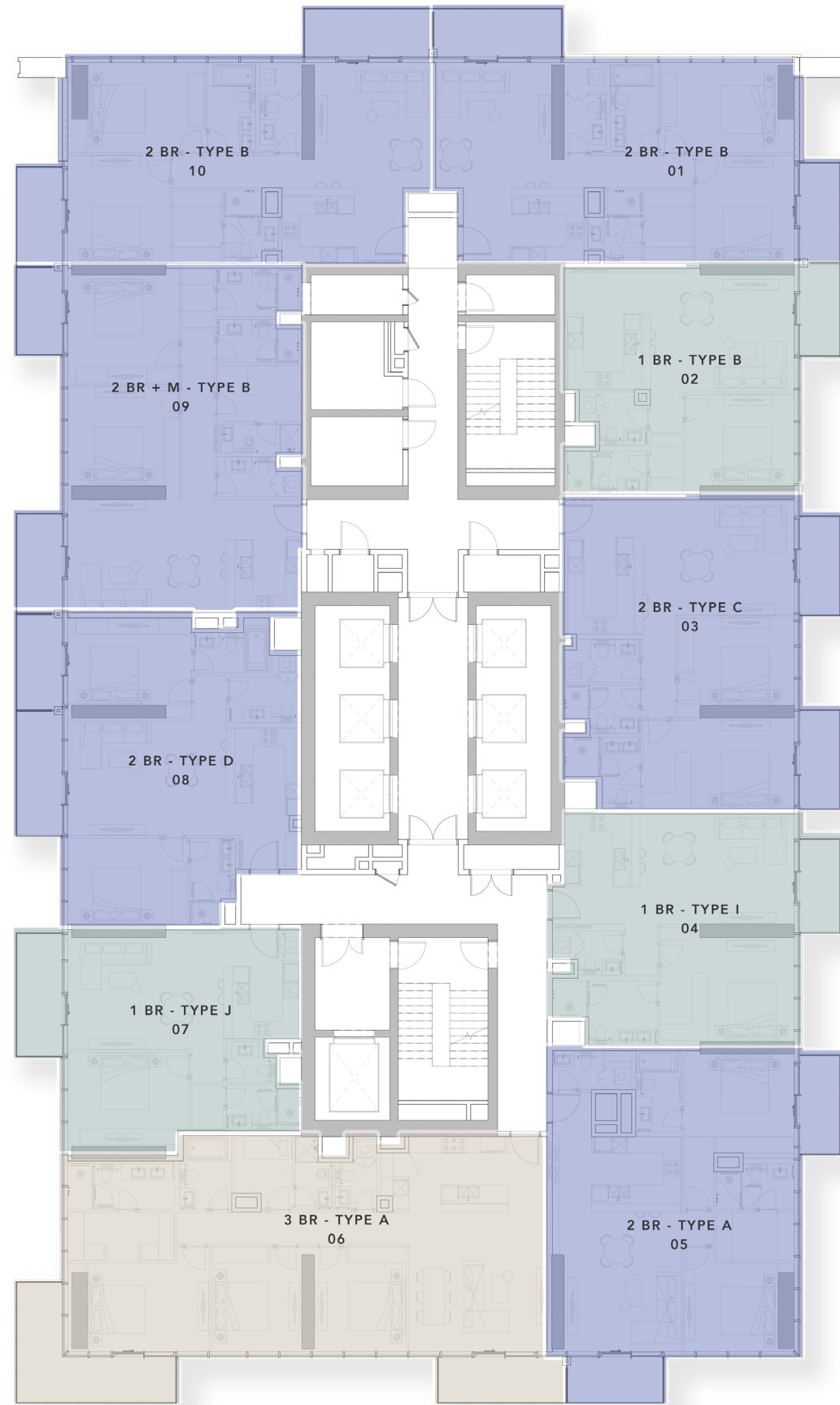
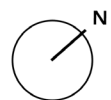
-  STUDIO
-  1 BEDROOM APARTMENTS
-  2 BEDROOM APARTMENTS
-  3 BEDROOM APARTMENTS



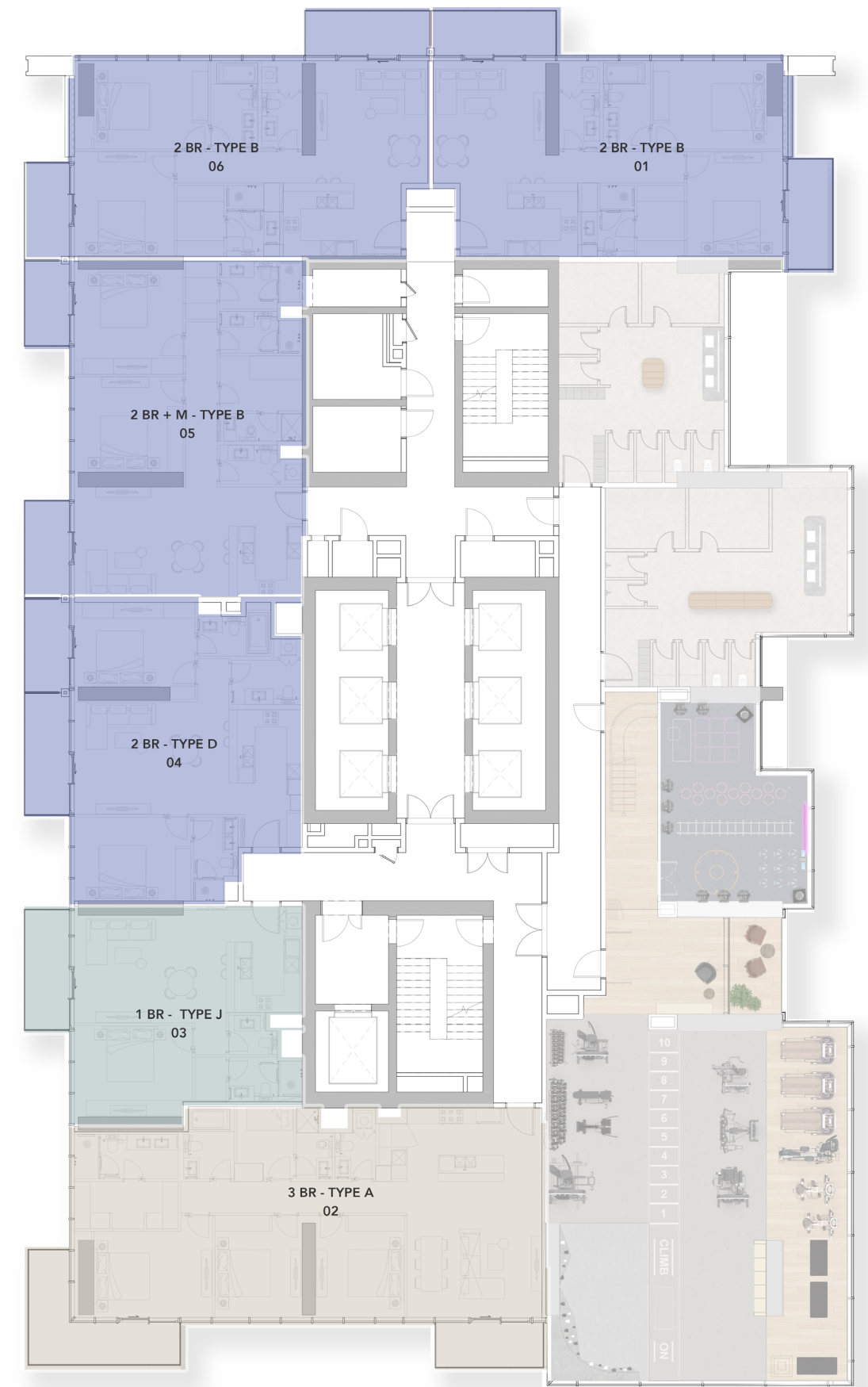


UPPER HOUSE
WEST

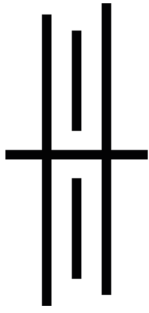
-  1 BEDROOM APARTMENTS
-  2 BEDROOM APARTMENTS
-  3 BEDROOM APARTMENTS



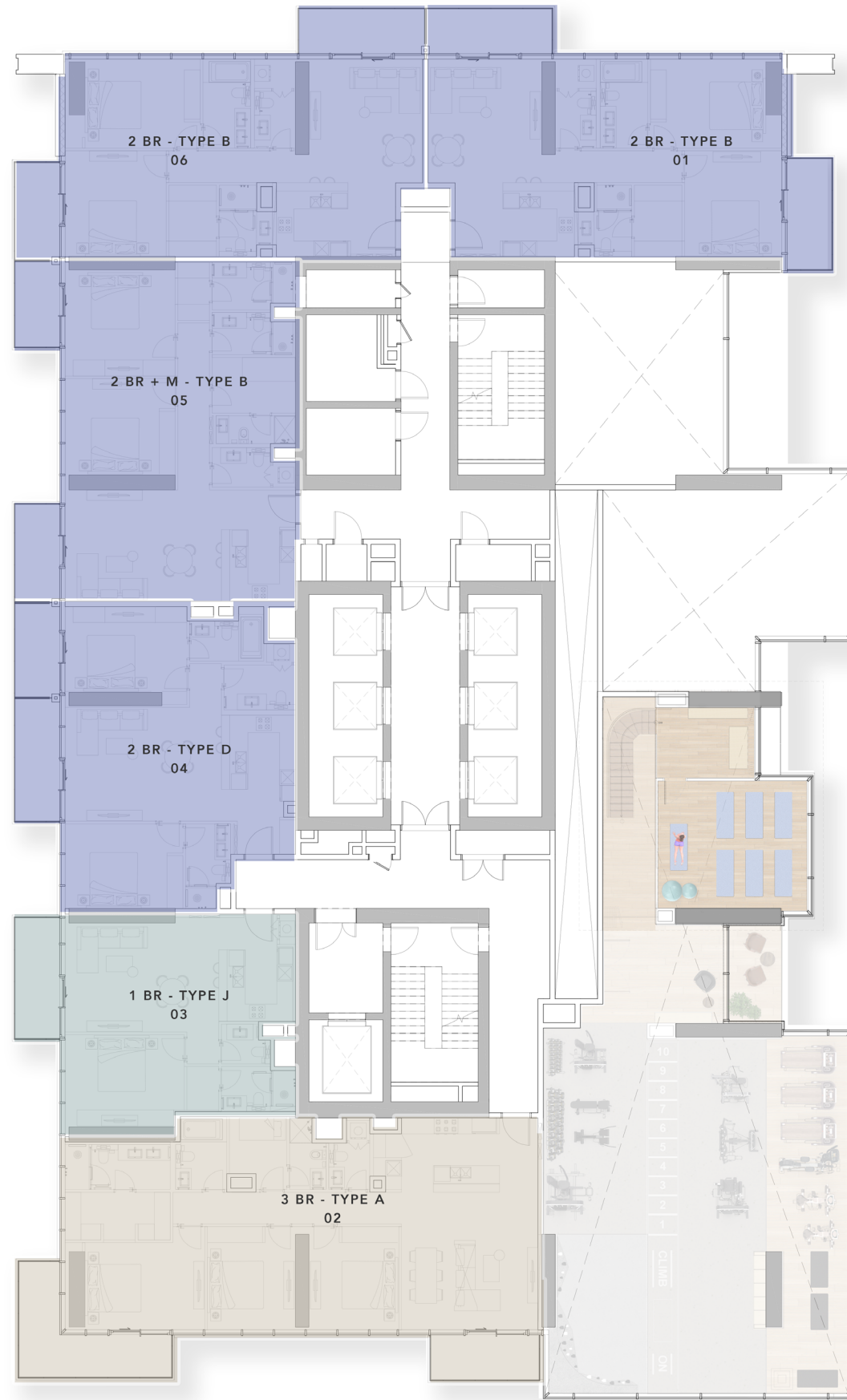
LEVEL 18-19 & 23-30 TYPICAL FLOOR PLAN



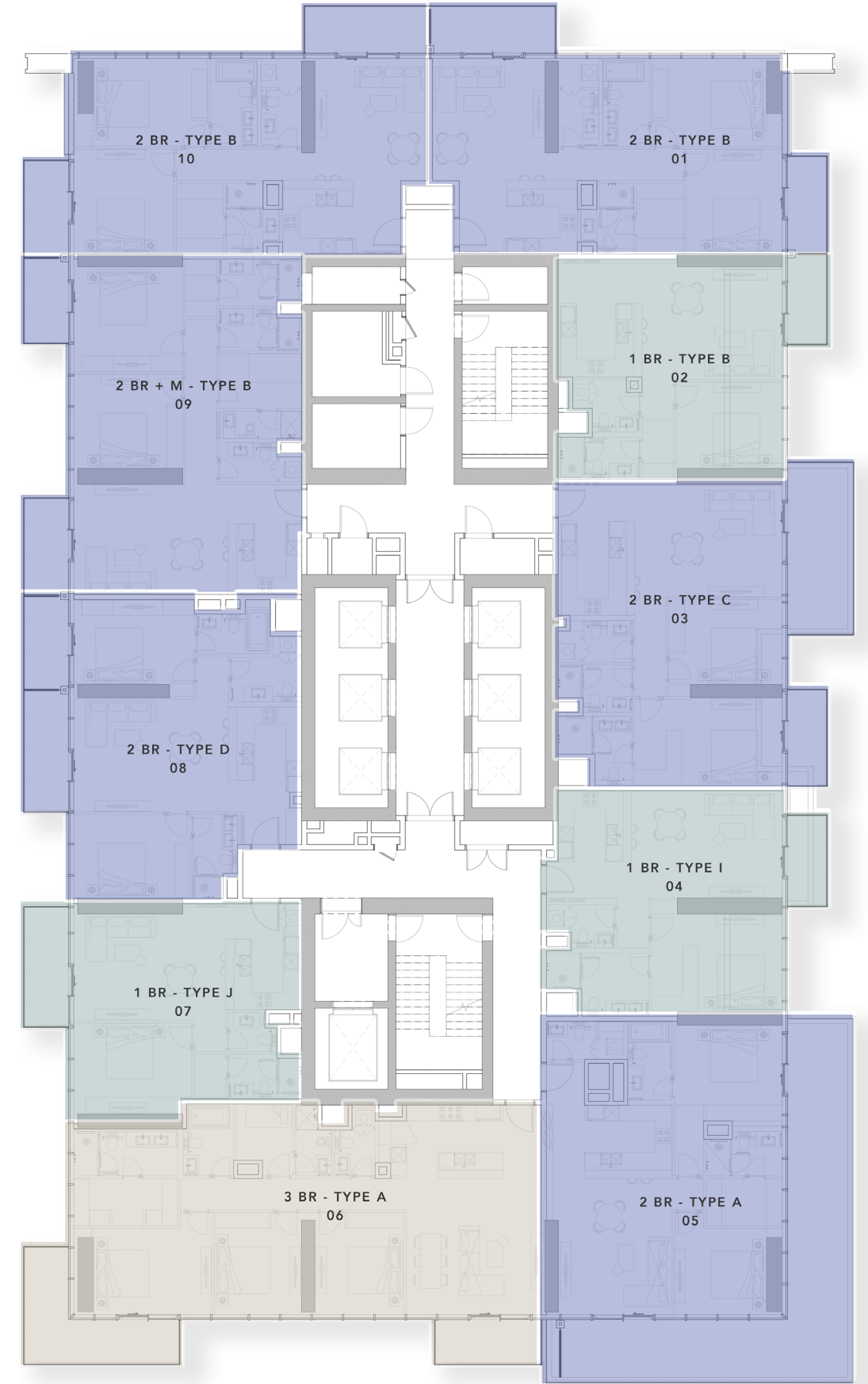
LEVEL 20 FLOOR PLAN



UPPER HOUSE
WEST

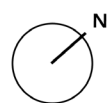


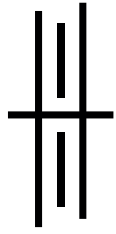
LEVEL 21 FLOOR PLAN



LEVEL 22 FLOOR PLAN

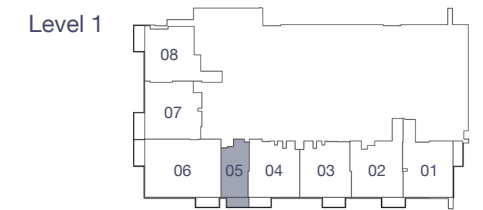
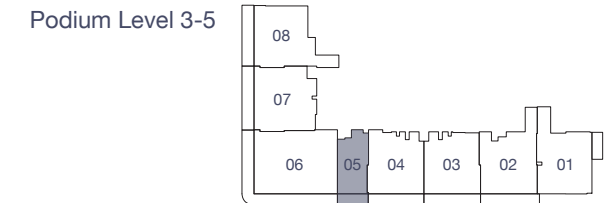
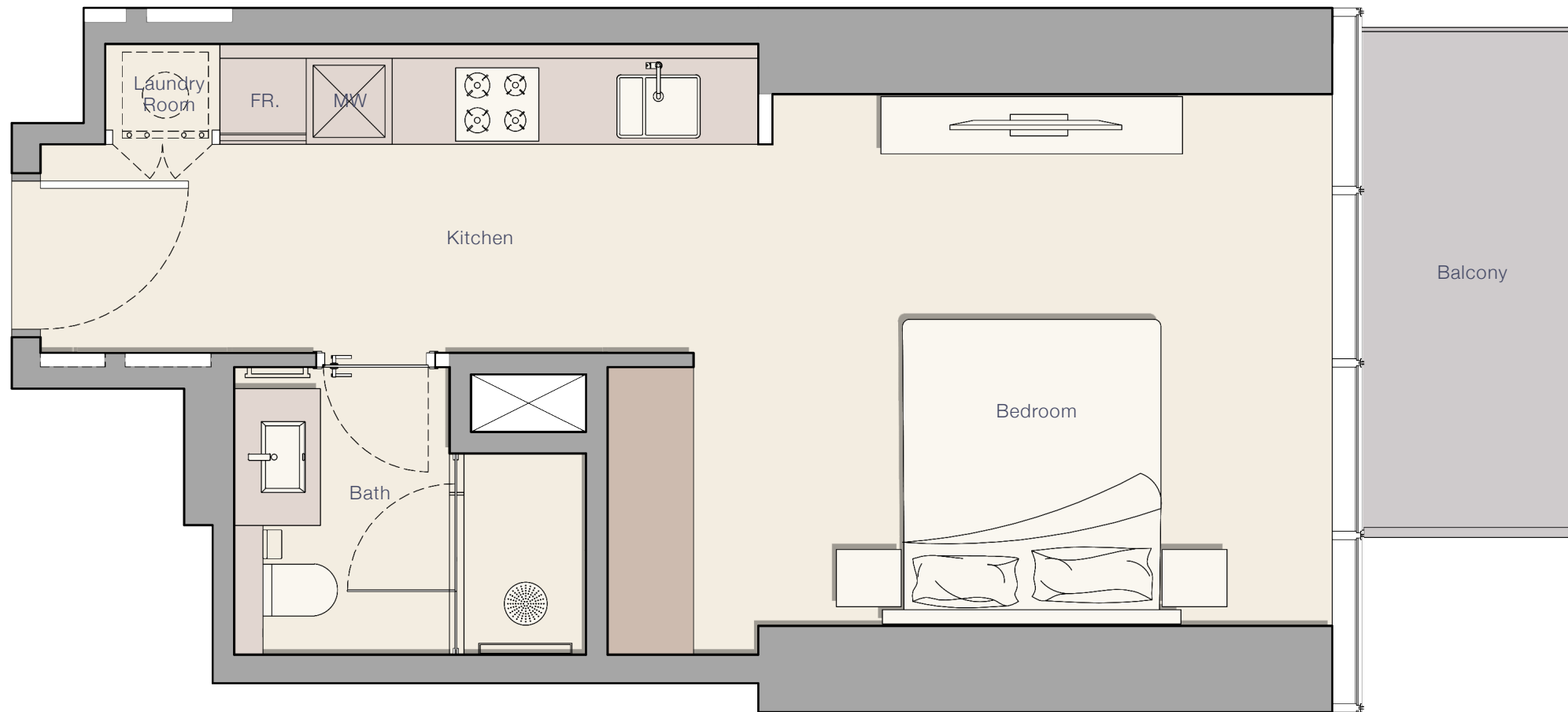
- 1 BEDROOM APARTMENTS
- 2 BEDROOM APARTMENTS
- 3 BEDROOM APARTMENTS





UPPER HOUSE
WEST

STUDIO - TYPE A



Internal Living Area

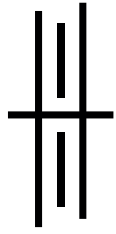
402.68 sq.ft.

Outdoor Living Area

58.66 sq.ft.

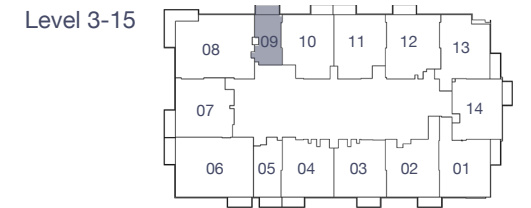
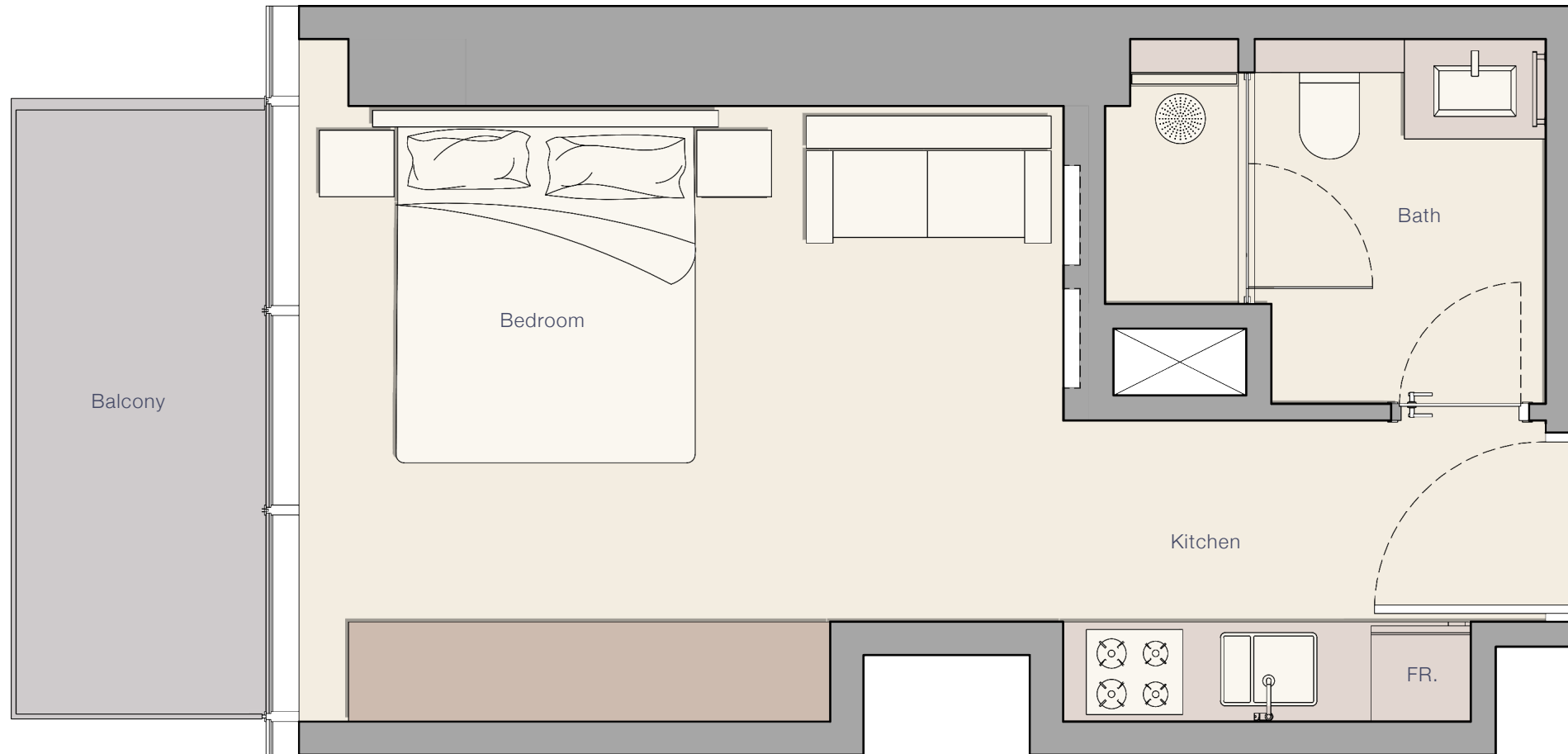
Total Living Area

461.34 sq.ft.



UPPER HOUSE
WEST

STUDIO - TYPE B



Internal Living Area

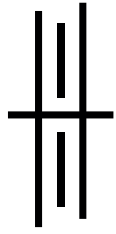
340.35 sq.ft.

Outdoor Living Area

61.25 sq.ft.

Total Living Area

401.60 sq.ft.



UPPER HOUSE
WEST

1 BEDROOM - TYPE A



Internal Living Area

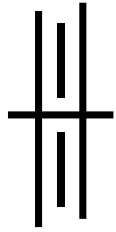
830.11 sq.ft.

Outdoor Living Area

66.09 sq.ft.

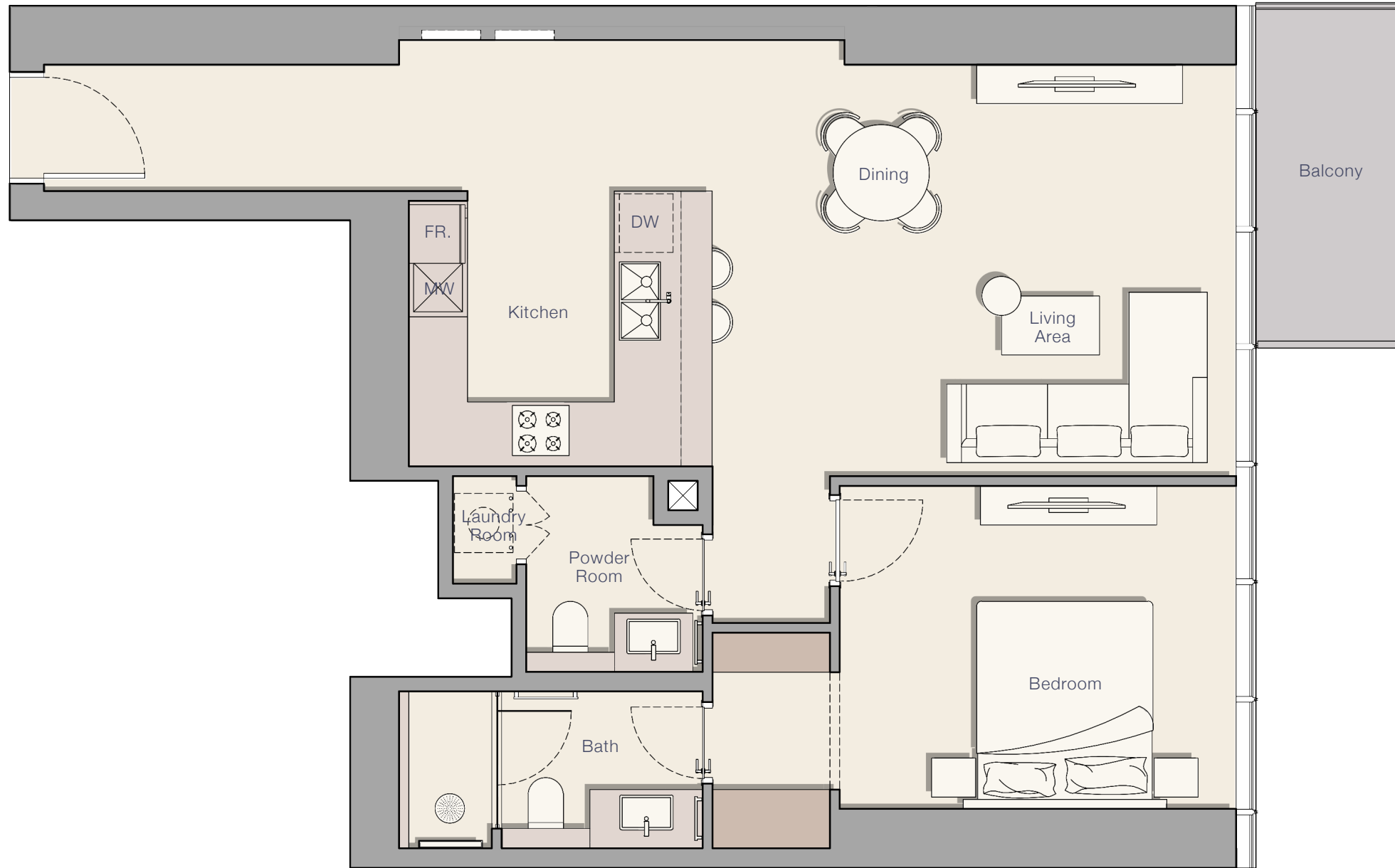
Total Living Area

896.20 sq.ft.



UPPER HOUSE
WEST

1 BEDROOM - TYPE B



Internal Living Area

852.29 sq.ft.

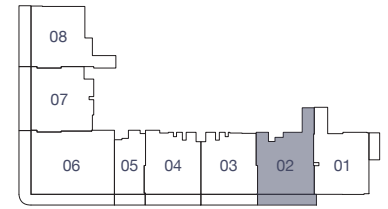
Outdoor Living Area

57.59 sq.ft.

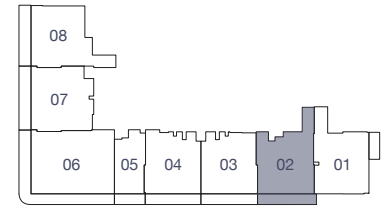
Total Living Area

909.87 sq.ft.

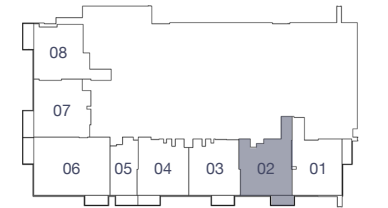
Podium Level 2



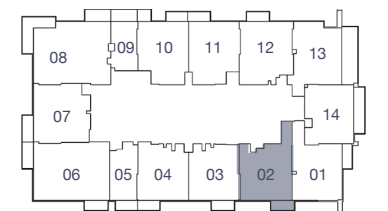
Podium Level 3-5



Level 1



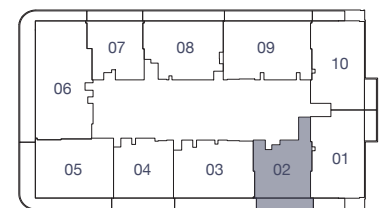
Level 2



Level 3-15

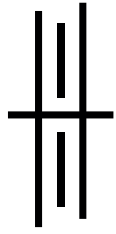


Level 17



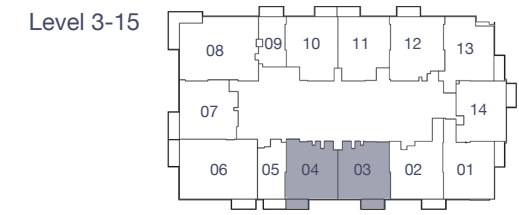
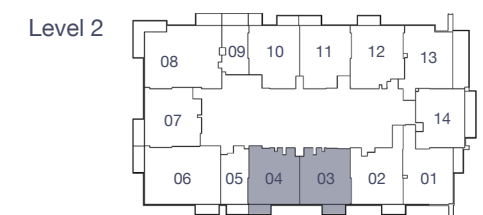
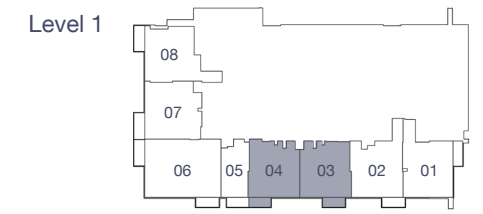
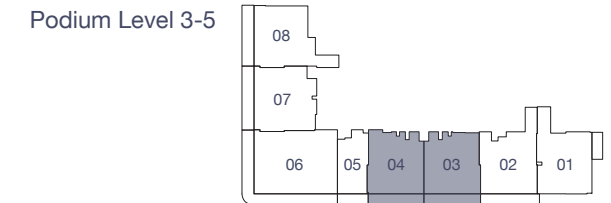
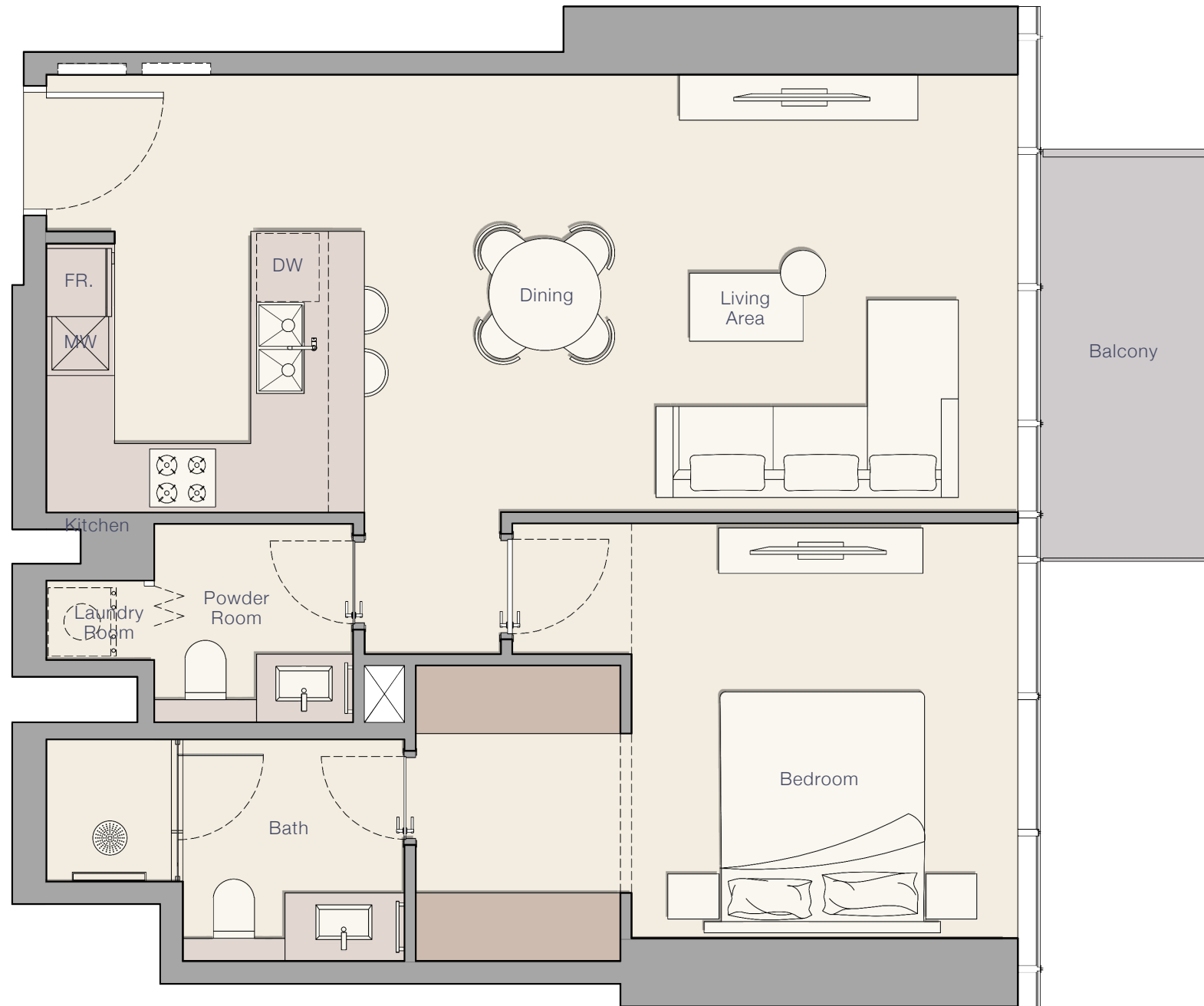
Level 22





UPPER HOUSE
WEST

1 BEDROOM - TYPE C



Internal Living Area

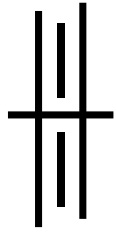
Outdoor Living Area

Total Living Area

766.28 sq.ft.

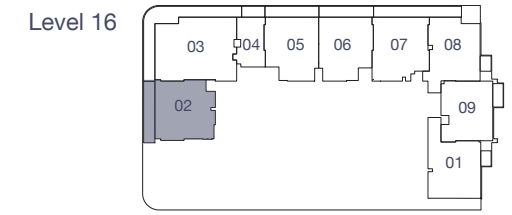
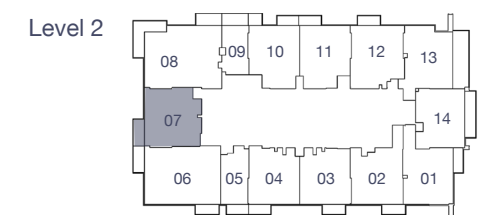
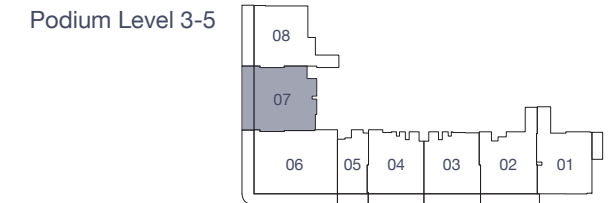
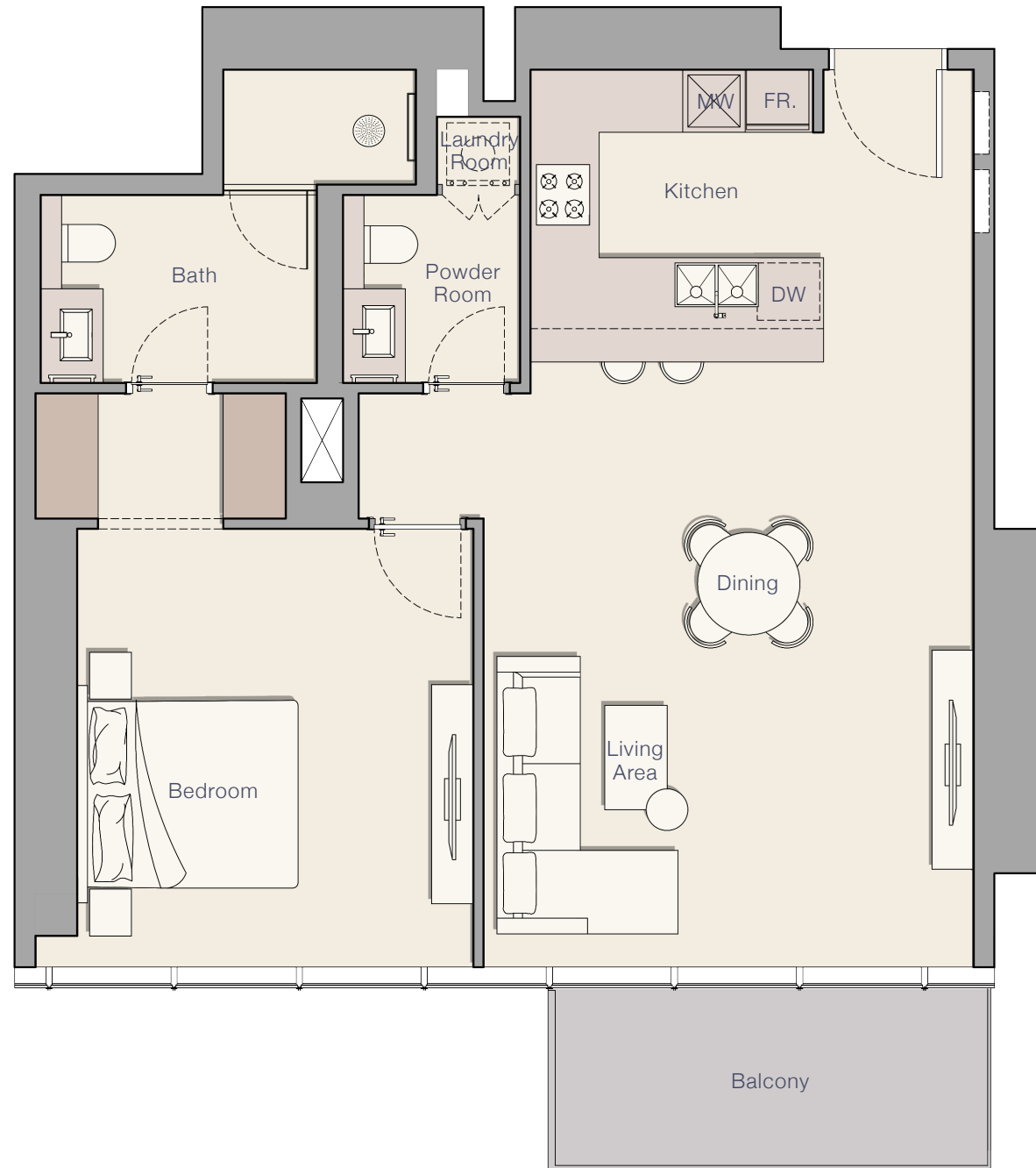
57.91 sq.ft.

824.19 sq.ft.



UPPER HOUSE
WEST

1 BEDROOM - TYPE D



Internal Living Area

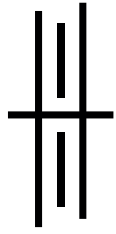
Outdoor Living Area

Total Living Area

865.53 sq.ft.

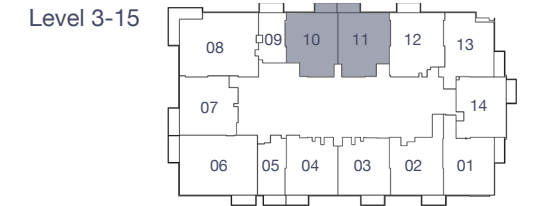
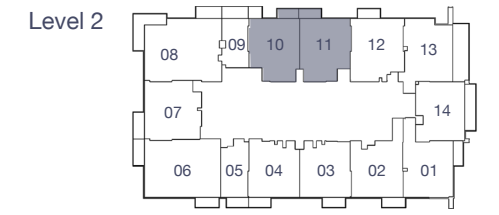
79.33 sq.ft.

944.86 sq.ft.



UPPER HOUSE
WEST

1 BEDROOM - TYPE E



Internal Living Area

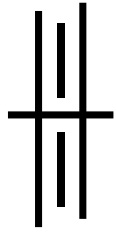
Outdoor Living Area

Total Living Area

798.47 sq.ft.

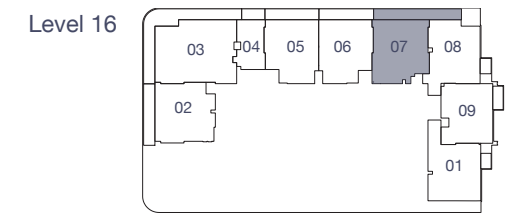
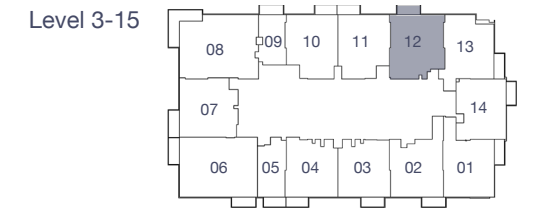
56.62 sq.ft.

855.09 sq.ft.



UPPER HOUSE
WEST

1 BEDROOM - TYPE F



Internal Living Area

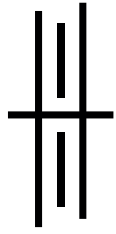
Outdoor Living Area

Total Living Area

858.74 sq.ft.

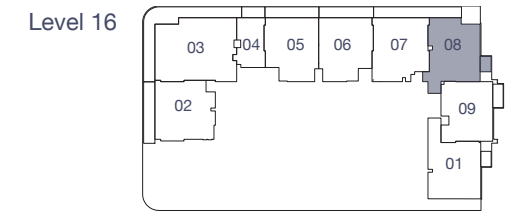
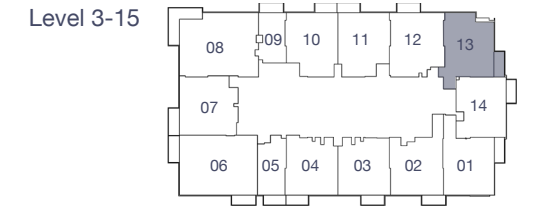
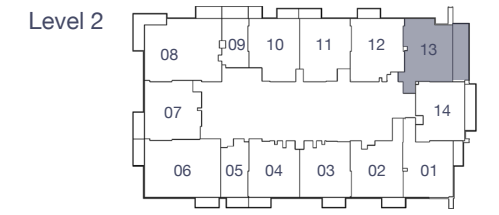
59.63 sq.ft.

918.38 sq.ft.



UPPER HOUSE
WEST

1 BEDROOM - TYPE G



Internal Living Area

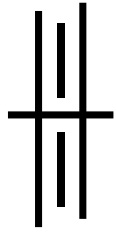
Outdoor Living Area

Total Living Area

836.79 sq.ft.

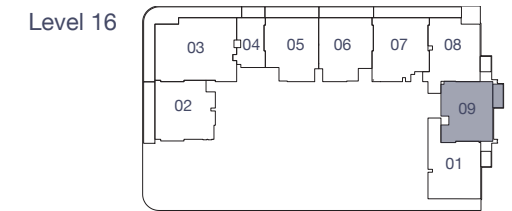
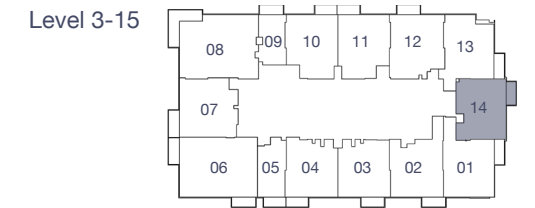
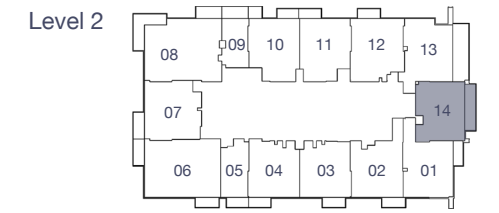
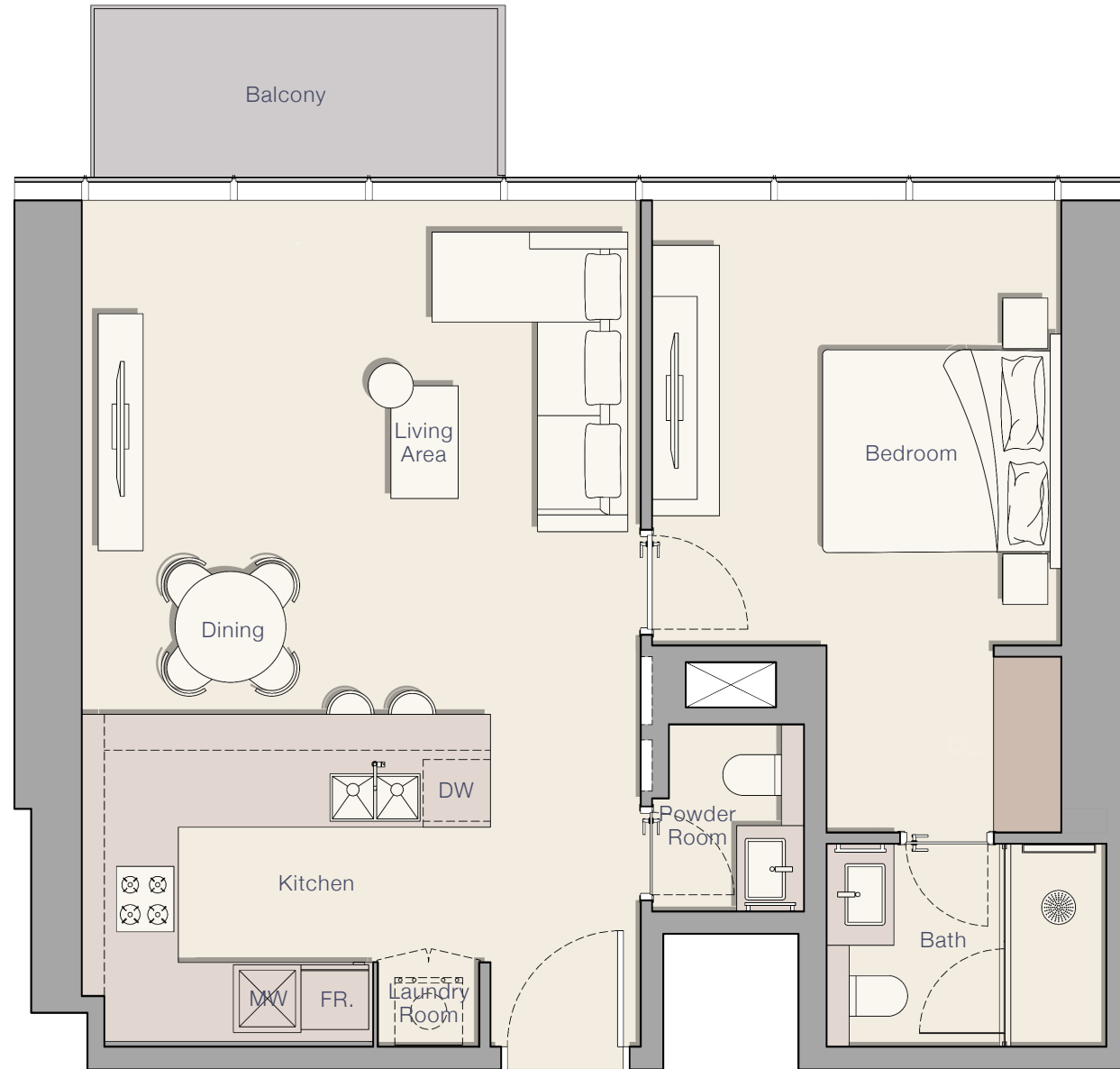
69.64 sq.ft.

906.43 sq.ft.



UPPER HOUSE
WEST

1 BEDROOM - TYPE H



Internal Living Area

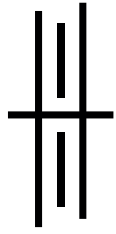
758.32 sq.ft.

Outdoor Living Area

60.71 sq.ft.

Total Living Area

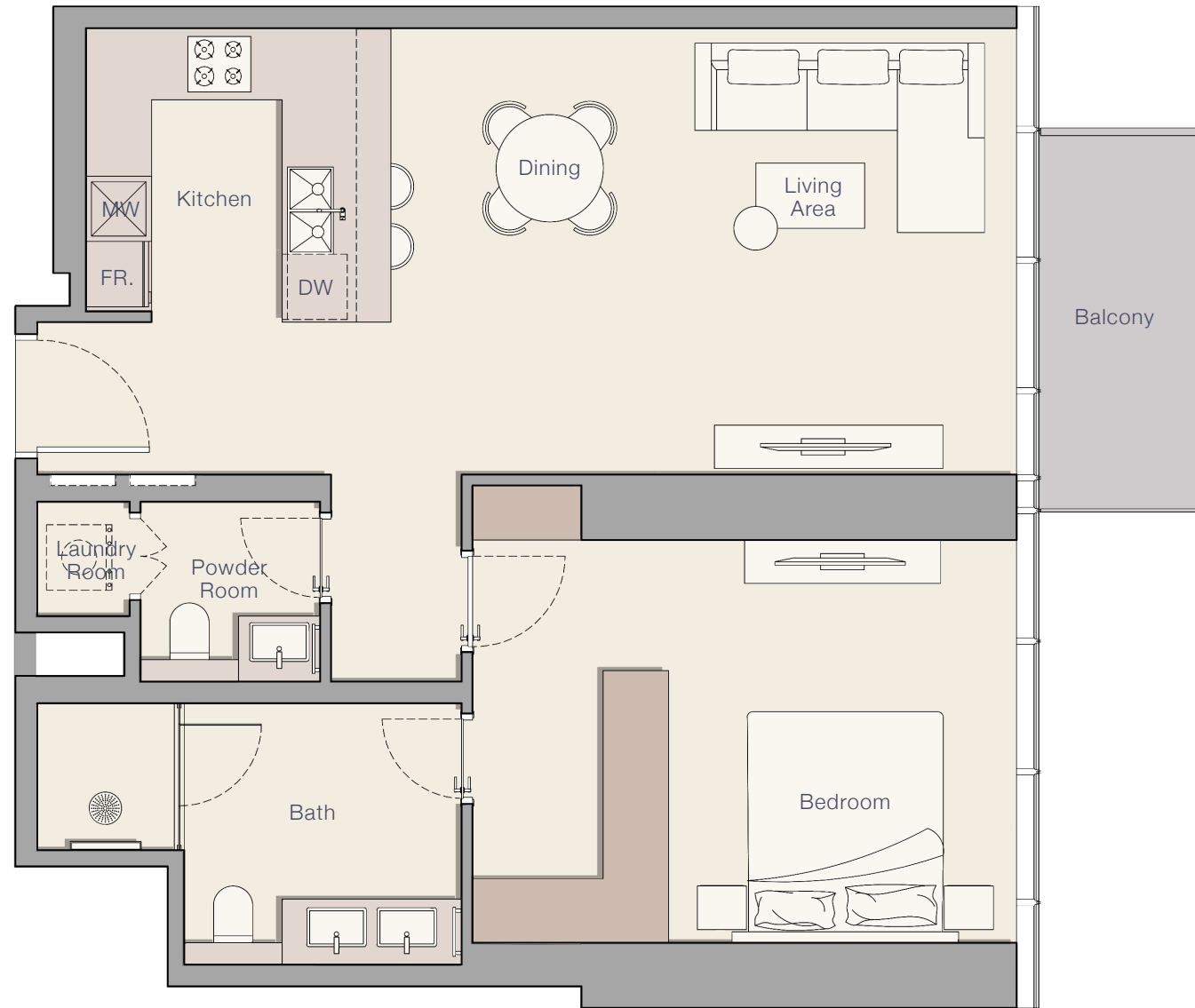
819.03 sq.ft.



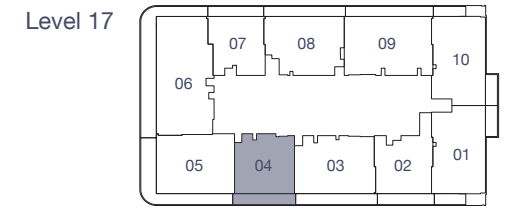
UPPER HOUSE
WEST

1 BEDROOM - TYPE I

FLOOR PLAN



FLOOR PLAN



Internal Living Area

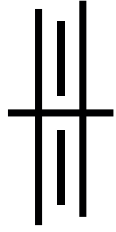
845.07 sq.ft.

Outdoor Living Area

57.91 sq.ft.

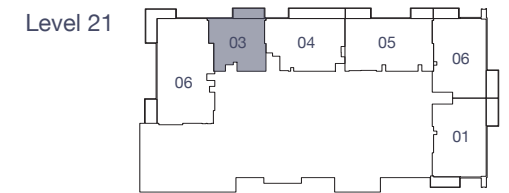
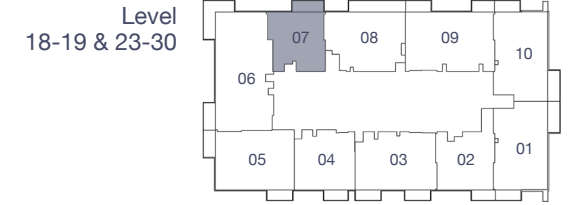
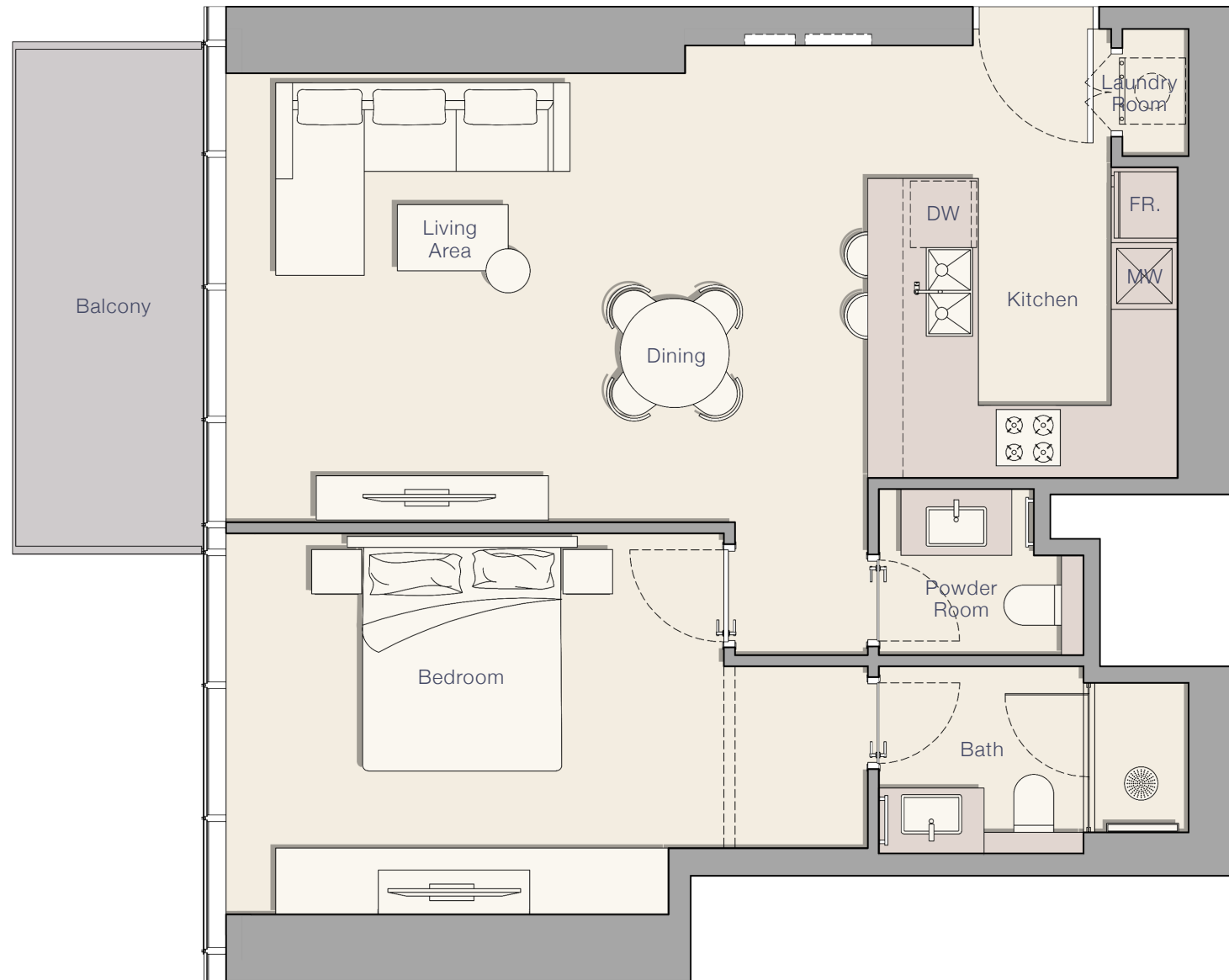
Total Living Area

902.98 sq.ft.



UPPER HOUSE
WEST

1 BEDROOM - TYPE J



Internal Living Area

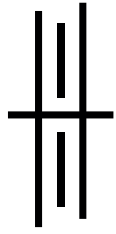
Outdoor Living Area

Total Living Area

754.01 sq.ft.

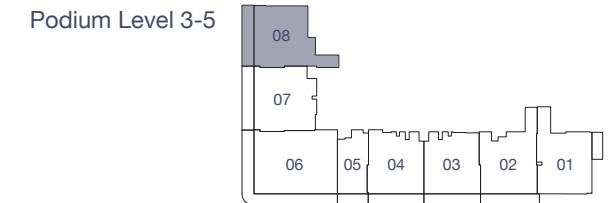
85.79 sq.ft.

839.80 sq.ft.



UPPER HOUSE
WEST

1 BEDROOM - TYPE K



Internal Living Area

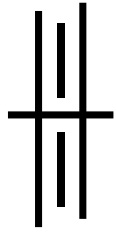
844.86 sq.ft.

Outdoor Living Area

76.75 sq.ft.

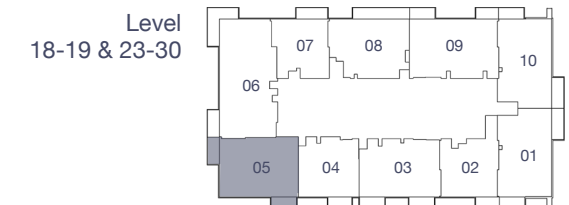
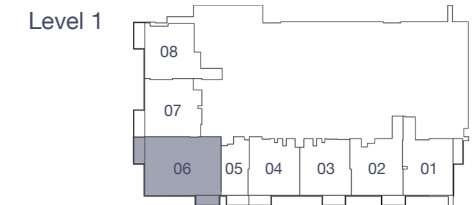
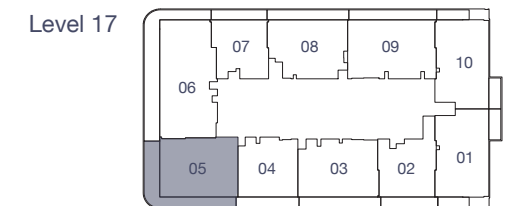
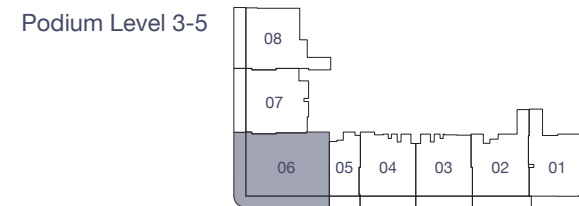
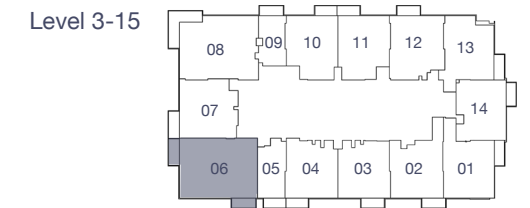
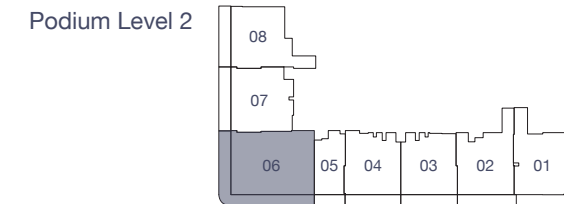
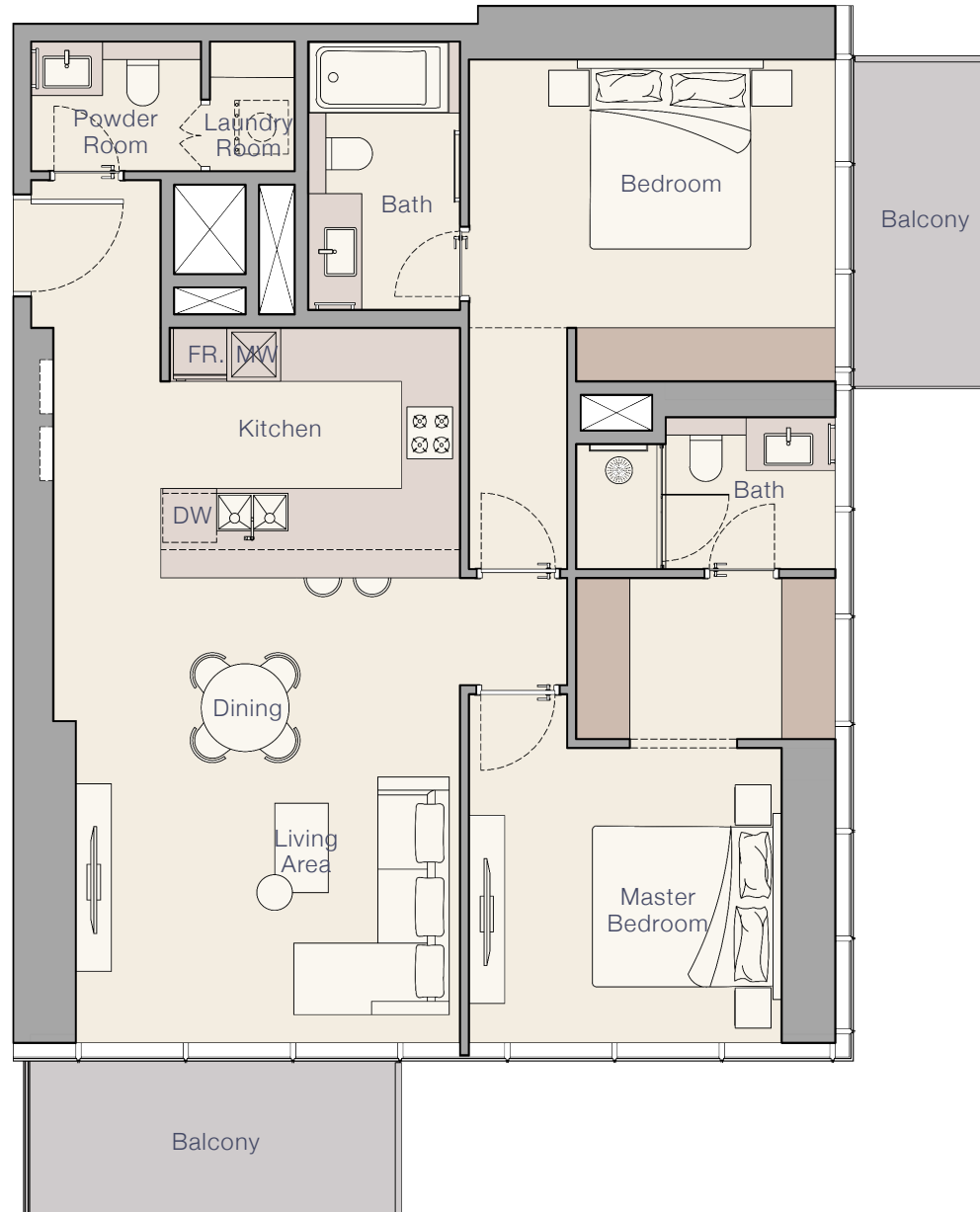
Total Living Area

921.61 sq.ft.



UPPER HOUSE
WEST

2 BEDROOM - TYPE A



Internal Living Area

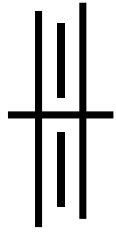
Outdoor Living Area

Total Living Area

1,097.06 sq.ft.

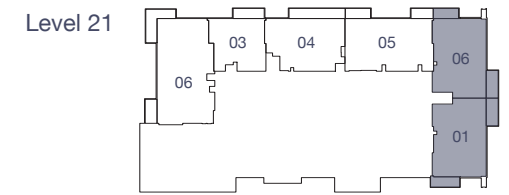
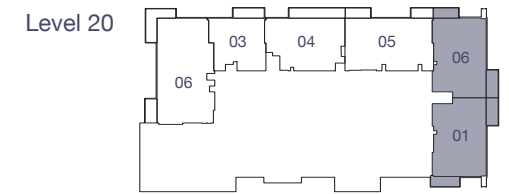
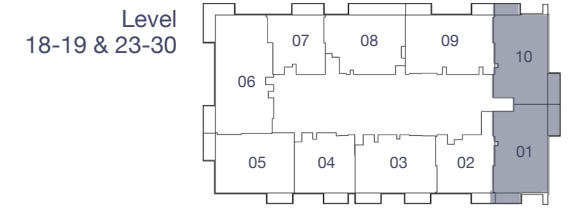
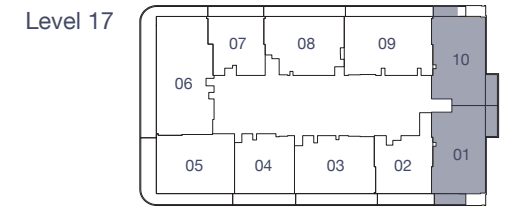
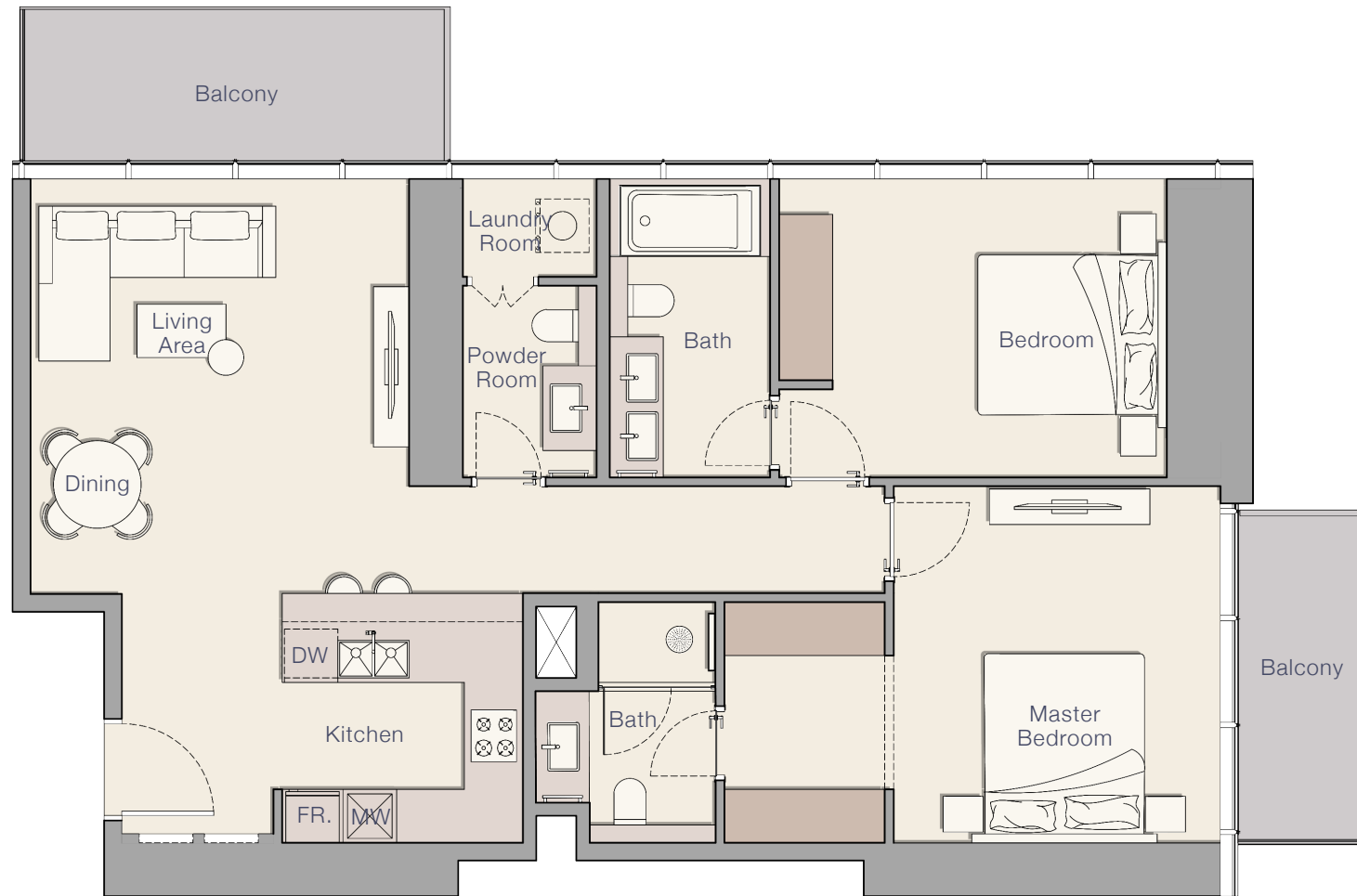
139.50 sq.ft.

1,236.56 sq.ft.



UPPER HOUSE
WEST

2 BEDROOM - TYPE B



Internal Living Area

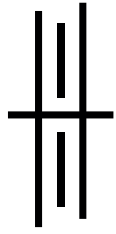
1,107.82 sq.ft.

Outdoor Living Area

151.56 sq.ft.

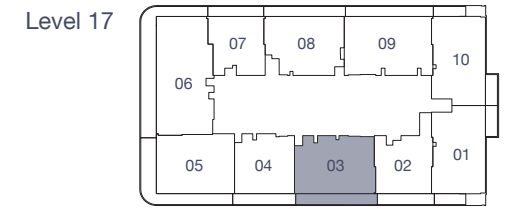
Total Living Area

1,259.38 sq.ft.



UPPER HOUSE
WEST

2 BEDROOM - TYPE C



Internal Living Area

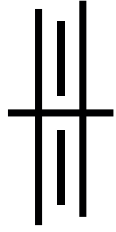
1,103.09 sq.ft.

Outdoor Living Area

122.60 sq.ft.

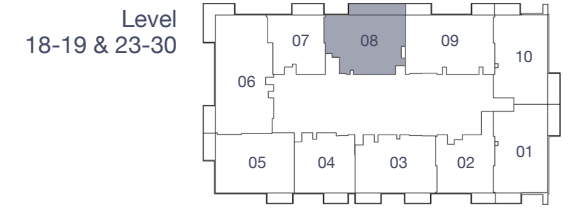
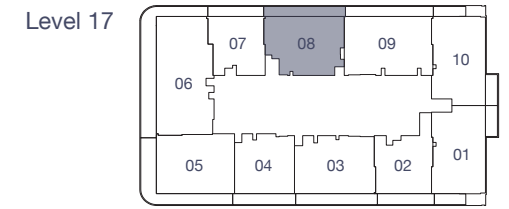
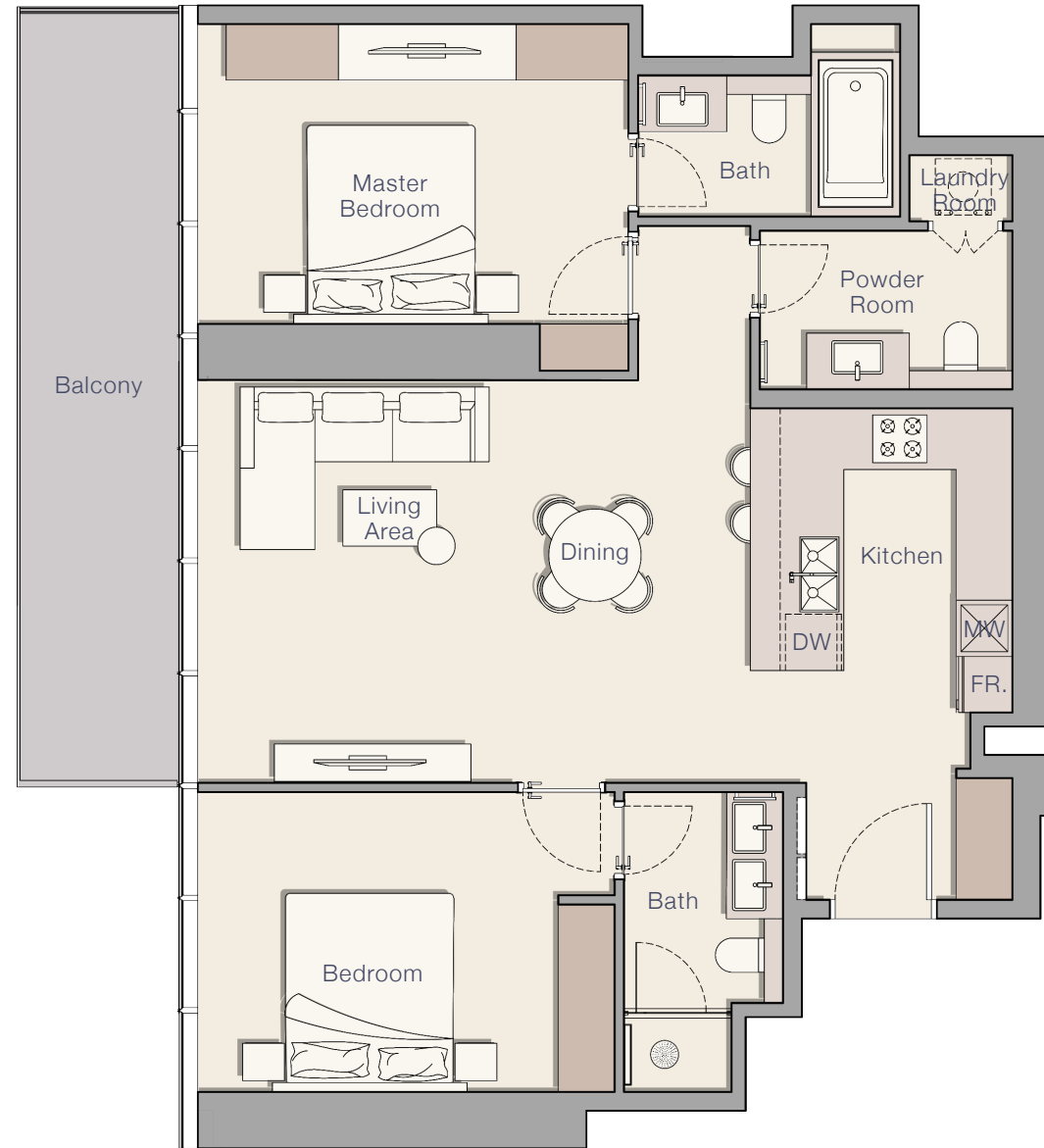
Total Living Area

1,225.69 sq.ft.



UPPER HOUSE
WEST

2 BEDROOM - TYPE D



Internal Living Area

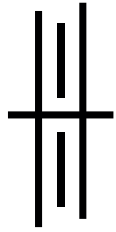
1,048.08 sq.ft.

Outdoor Living Area

155.32 sq.ft.

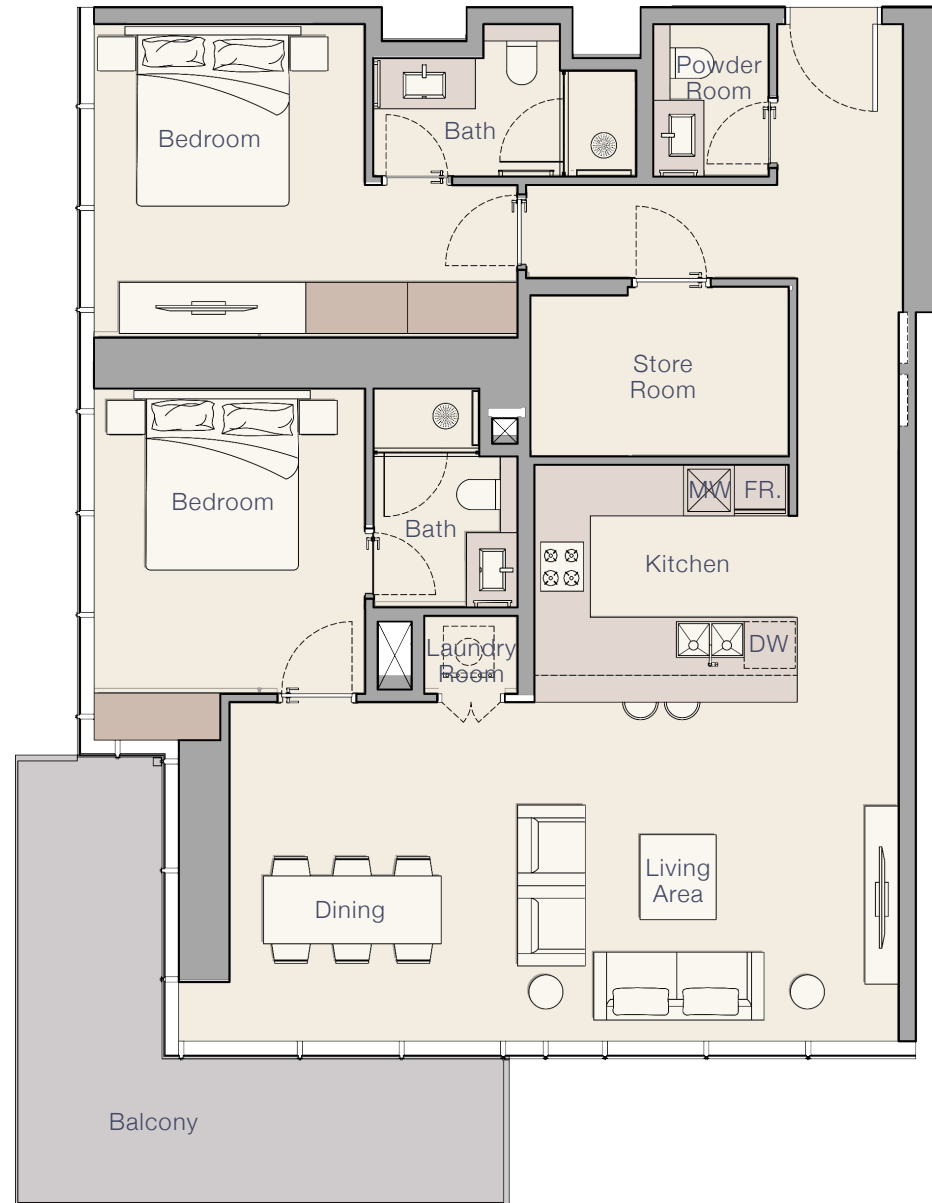
Total Living Area

1,204.41 sq.ft.



UPPER HOUSE
WEST

2 BEDROOM + MAIDS - TYPE A



Internal Living Area

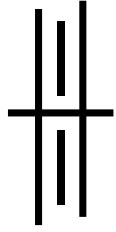
Outdoor Living Area

Total Living Area

1,247.11 sq.ft.

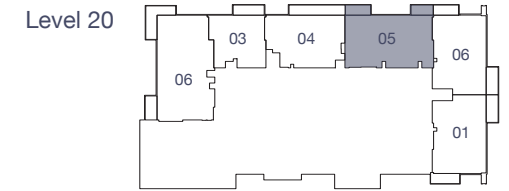
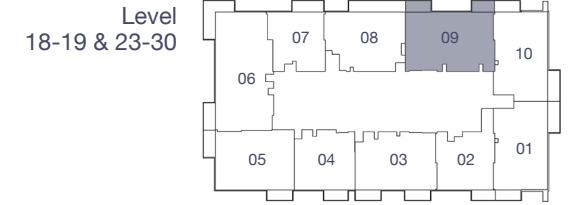
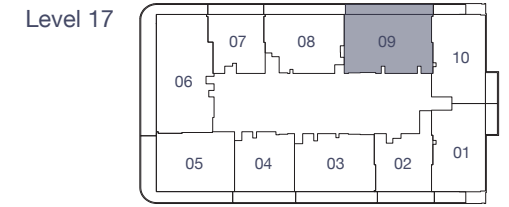
175.24 sq.ft.

1,422.34 sq.ft.



UPPER HOUSE
WEST

2 BEDROOM + MAID - TYPE B



Internal Living Area

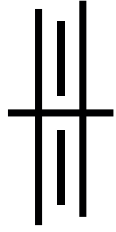
Outdoor Living Area

Total Living Area

1,248.29 sq.ft.

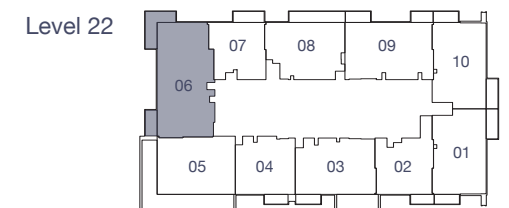
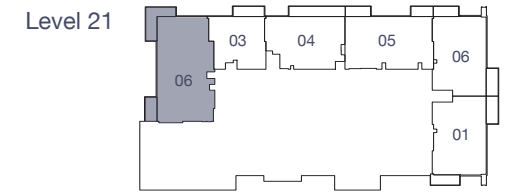
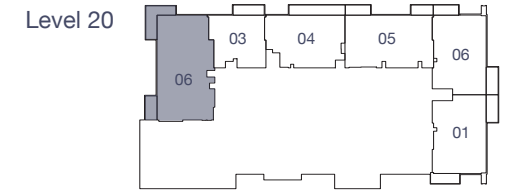
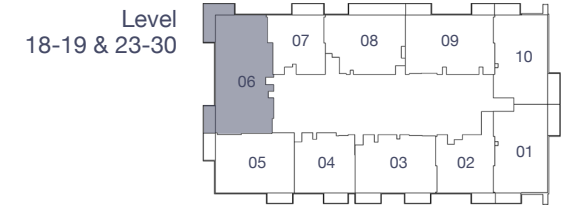
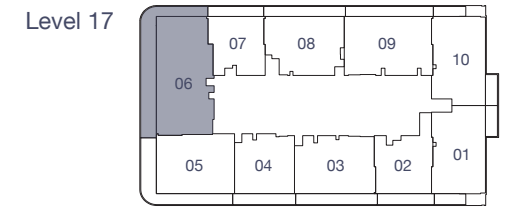
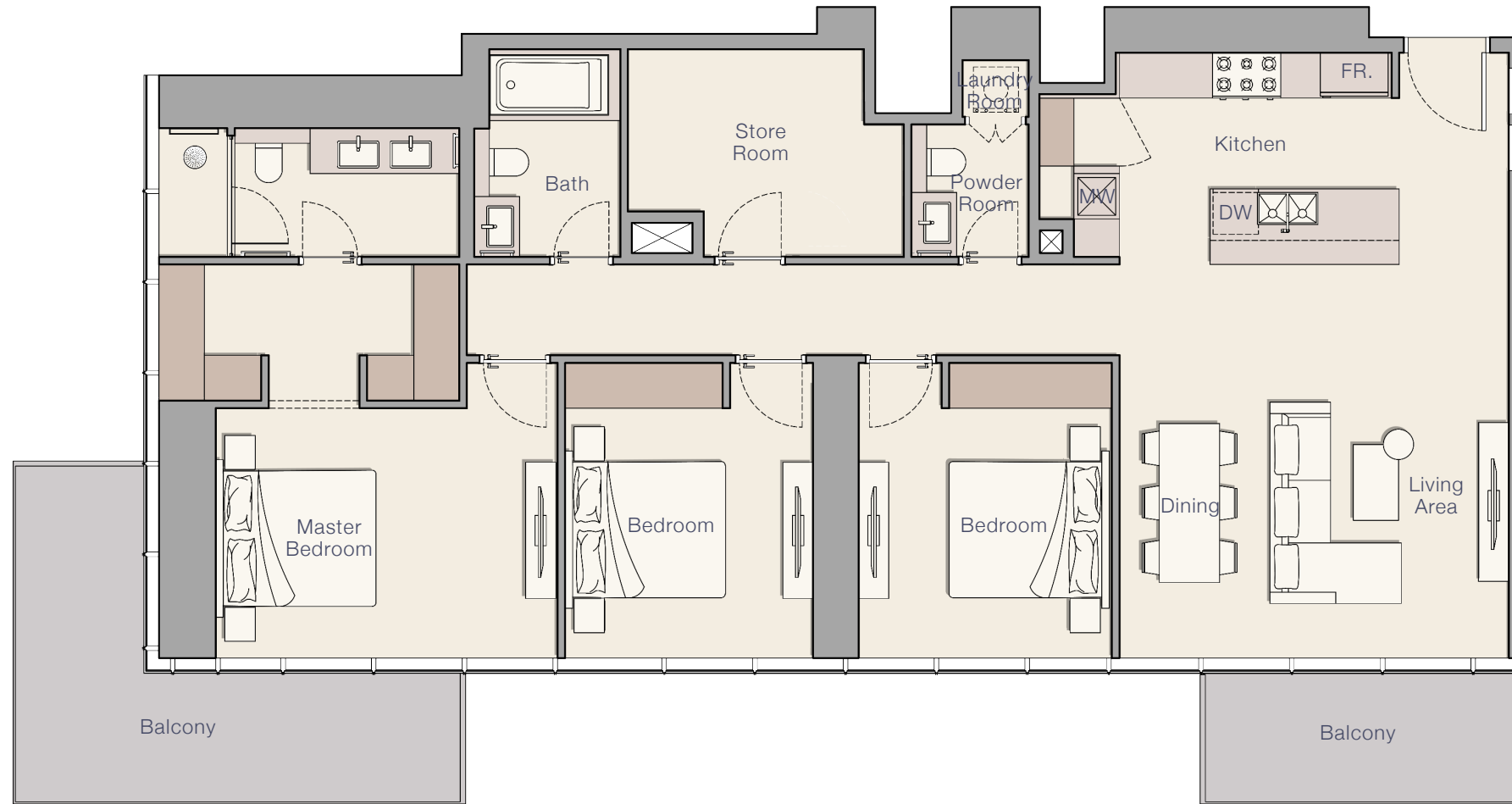
130.89 sq.ft.

1,379.18 sq.ft.



UPPER HOUSE
WEST

3 BEDROOM - TYPE A



Internal Living Area

Outdoor Living Area

Total Living Area

1,581.33 sq.ft.

242.08 sq.ft.

1,823.41 sq.ft.



UPPER HOUSE
BY ELLINGTON

800 8288
info@ellingtongroup.com

ELLINGTONPROPERTIES.AE

The renderings and visualizations contained in this brochure are provided for illustrative and marketing purposes. While the information provided is believed to be accurate and reliable at the time of printing, only the information contained in the final Sales and Purchase Agreement will have any legal effect.