



MOHAMMED BIN RASHID AL MAKTOUM CITY
DISTRICT ONE

SIX BEDROOM VILLA BROCHURE

meydan
SOBHA

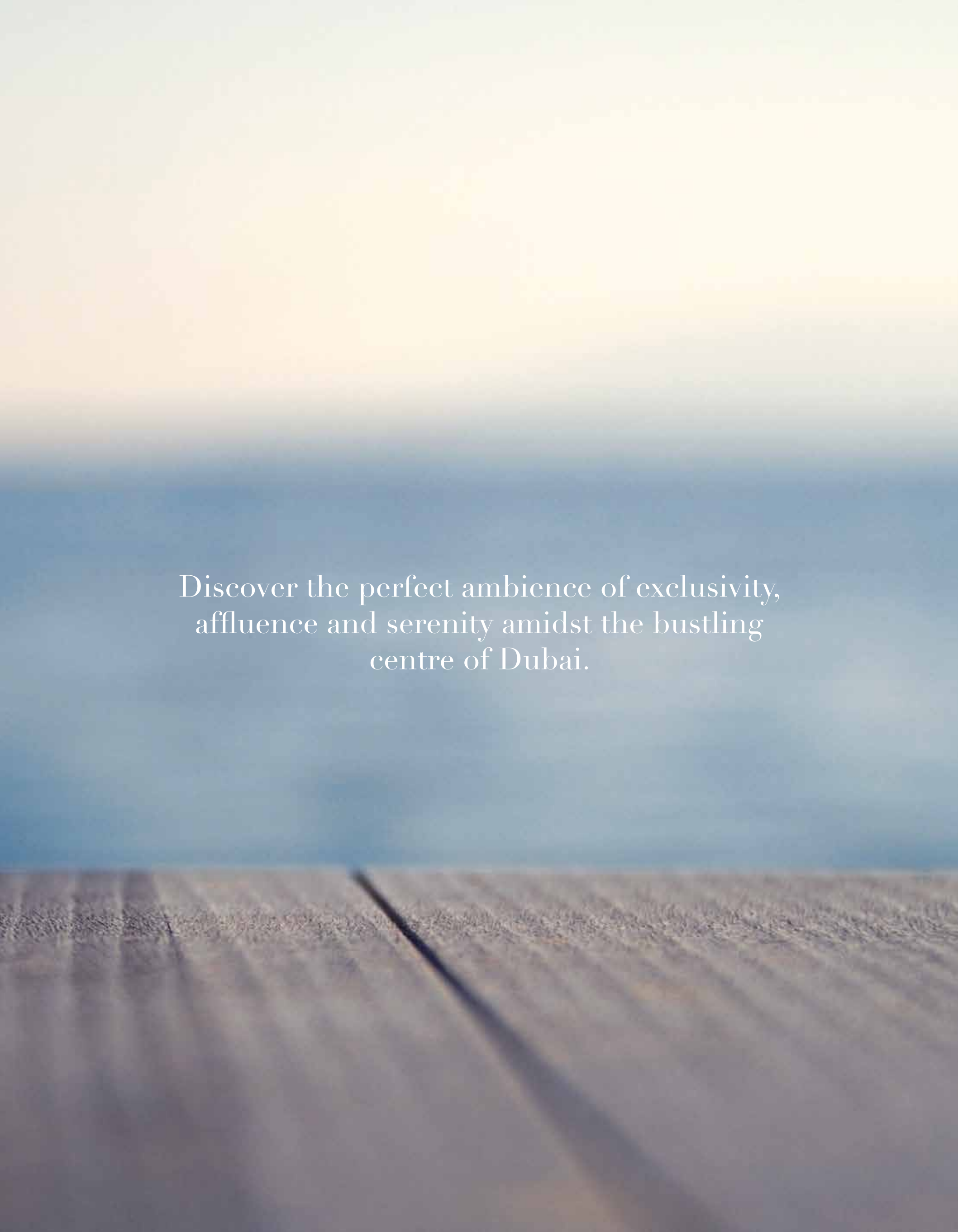


VILLAS

MOHAMMED BIN RASHID AL MAKTOUM CITY
DISTRICT ONE

A landscape photograph featuring a vast field of purple flowers in the foreground, leading towards a distant horizon. The sky above is a deep blue, transitioning into a lighter, hazy blue near the horizon. The overall mood is serene and expansive.

COME HOME TO
DISTRICT ONE



Discover the perfect ambience of exclusivity,
affluence and serenity amidst the bustling
centre of Dubai.



AT THE
CENTRE
OF LIFE





Located just four kilometres from Downtown Dubai, Mohammed Bin Rashid Al Maktoum City - District One is an elegant lifestyle community nestled amidst glorious natural surroundings.

Spread over 45 million square feet with crystal lagoons, sublime beaches, sweeping parkland and breathtaking architecture, District One is set to become the most distinguished address in Mohammed Bin Rashid Al Maktoum City.

EXPERIENCE EXTRAORDINARY LIVING EVERY DAY

A unique reflection of individual taste, each of the three distinct architectural villa styles at Mohammed Bin Rashid Al Maktoum City - District One redefine what truly exceptional can be and promise a lavish, comfortable and tranquil lifestyle.





CONTEMPORARY VILLAS

With clean, understated lines, these villas are the ultimate expression of minimalist architecture.









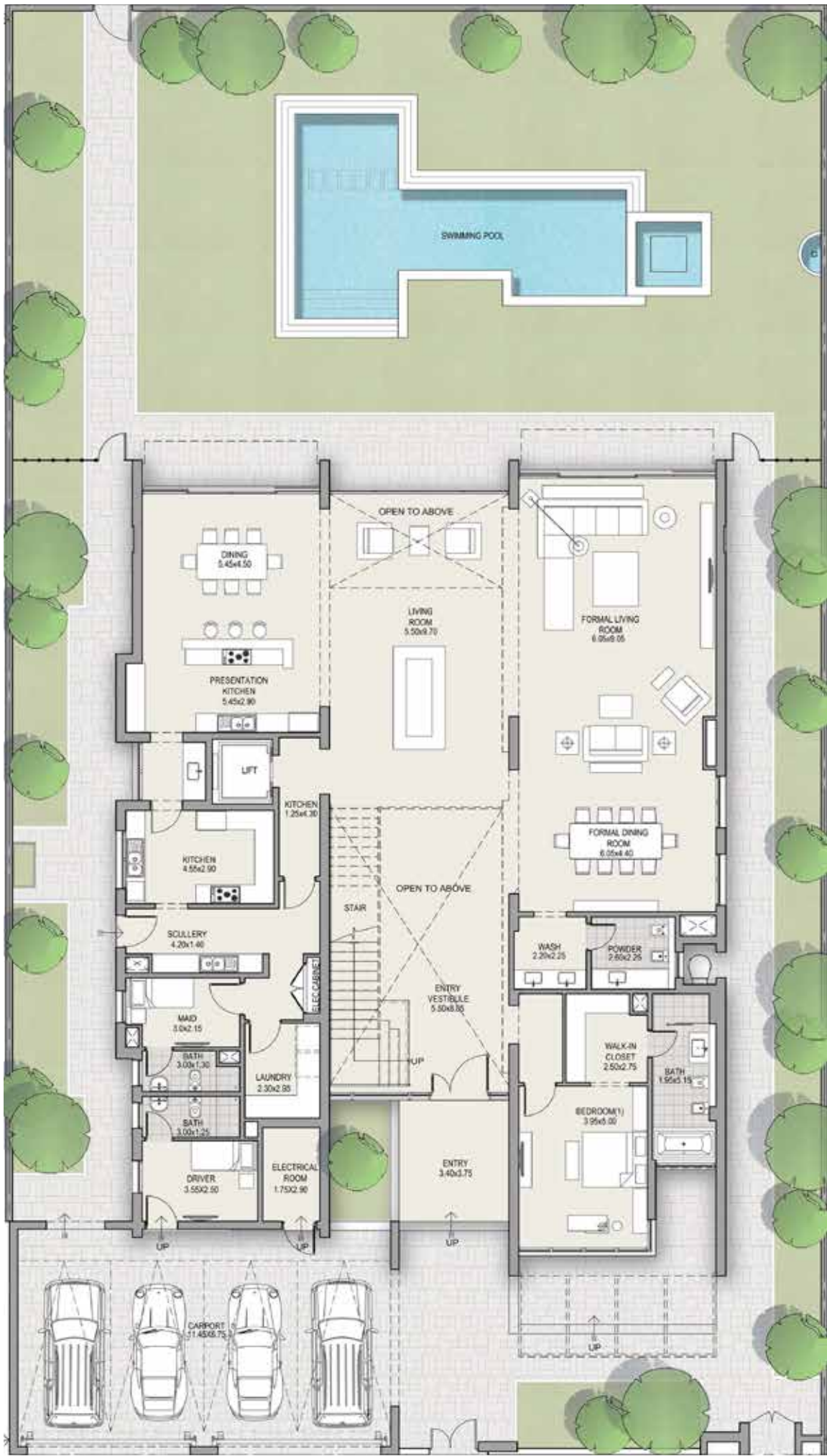
A true reflection of an aesthetic lifestyle, these cutting-edge homes are ideal for open plan living with calm sweeping spaces, elegant interiors and seamlessly simple connections.

Creating an incredibly light ambience, an array of sliding glass doors and windows break down the barriers between the interior and exterior, bringing the outside in.

Exuding chic styling with modern functionality, these villas epitomise simple sophistication at its finest, where natural materials combine with deep, cool shades of grey to enhance the feeling of space.

CONTEMPORARY VILLA
Type C

6 Bedroom
Ground Floor Plan



TOTAL AREA 9,903 SQFT

CONTEMPORARY VILLA
Type C

6 Bedroom
First Floor Plan



TOTAL AREA 9,903 SQFT





TOTAL AREA 11,527 SQFT

CONTEMPORARY VILLA

Type C

6+ Bedroom Ground Floor Plan



TOTAL AREA 11,527 SQFT

CONTEMPORARY VILLA
Type C

6+ Bedroom
First Floor Plan



TOTAL AREA 11,527 SQFT



MODERN ARABIC VILLAS

Inspired by modern Arabic architectural traditions, these villas offer a delightful blend of practical functionality and chic elegance.









Designed for large families and guests alike with a clear hierarchy of form creating truly special spaces and separate zones that allow smooth transition, these homes are steeped in cultural traits with modern aesthetics and offer complete privacy in absolute comfort.

With a colour palette inspired by the beauty of the Middle East – golden sands and hues of beige, earth and natural woods, our Modern Arabic villas are a celebration of the storied Arabian culture filled with subtle traditional references.

MODERN ARABIC VILLA
Type A

6 Bedroom
Ground Floor Plan



TOTAL AREA 9,939 SQFT

MODERN ARABIC VILLA
Type A

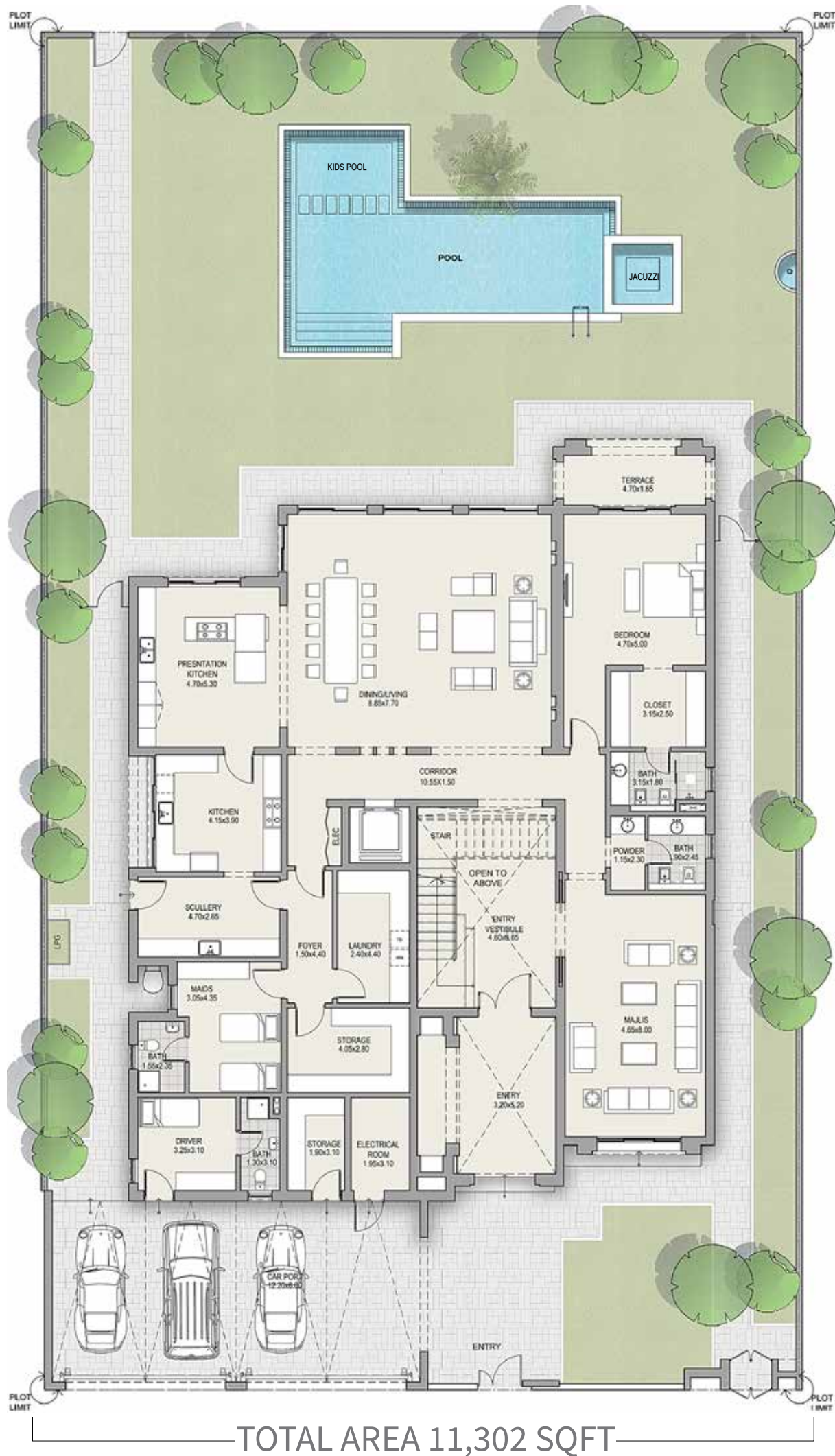
6 Bedroom
First Floor Plan



TOTAL AREA 9,939 SQFT

MODERN ARABIC VILLA
Type C

6 Bedroom
Ground Floor Plan



MODERN ARABIC VILLA

Type C

6 Bedroom First Floor Plan







TOTAL AREA 11,302 SQFT

MODERN ARABIC VILLA

Type C

6+ Bedroom Ground Floor Plan



TOTAL AREA 11,302 SQFT

MODERN ARABIC VILLA
Type C

6+ Bedroom
First Floor Plan



TOTAL AREA 11,302 SQFT



MEDITERRANEAN VILLAS

Reflecting a harmonious blend of Mediterranean
and northern European architecture, these villas
bring together cutting-edge interiors with
classical design.









Inspired by the best of Italian, Greek and Spanish styles, these homes make for grand family residences by seamlessly integrating the demands of modern family living with a warm sense of hospitality that never goes out of style.

Each villa comes with beautifully arched openings, pitched terracotta roofs, wooden pergolas and columns, courtyard layouts, and stucco walls in a rich natural palette of colours that evoke thoughts of days spent relaxing on the shores of the Mediterranean Sea.



Disclaimer: The trademarks, images and copyright included in this literature may not be used without the express prior written consent of Meydan Sobha LLC FZ. All rights reserved. All reasonable care has been taken in the preparation of this literature and to the best of our knowledge, no relevant information has been omitted on purpose. However, Meydan Sobha LLC FZ and its management, employees, appointment sales and marketing agents disclaim all liability in the event that any information, design, area or matter in this literature differs from the sale and purchase agreement or the actual constructed development or part of the development. None of the information contained in this literature should be reviewed as an offer to sell or as a solicitation to purchaser any part of the development. Rather the information contained herein is provided to you as that you can learn and generally familiarise yourself with the development. We reserve our right to make improvements and/or changes to this literature and the information, design or areas contained at any time without notice or obligation.

All measurements, dimensions, coordinates and drawings given in the floor plan brochures are approximate and provided only for the purpose of marketing, illustration, information and general guidance as such drawings are not to scale. All the rooms, swimming pool, sizes, locations, orientations, dimensions, fixtures, fittings, finishes and specifications (including materials, placement, size of rooms, windows, doors, balcony, furniture, inbuilt wardrobe etc.) provided in the floor plans may vary as the same have been taken from concept designs prior to the actual development/construction and therefore their accuracy in relation to actual construction cannot be confirmed. Hence, we make no guarantee, warranty or representation as to the accuracy and completeness of the floor plan information as changes may be made during the development process, without notice. Always refer to the latest IFC design available in the sales office for the most accurate representation of all construction details.

Developer no- 956 | Project no- 1496 | Trakheesi no- 17157

مدينة محمد بن راشد آل مكتوم - دسترکت ون
صندوق بريد 128600، دبي، الإمارات العربية المتحدة
هـ: +971 4 403 0000

Mohammed Bin Rashid Al Maktoum City – District One
P.O. Box 128600, Dubai, United Arab Emirates
T: +971 4 403 0000

www.meydansobha.com

meydansobha.com

meydan
SOBHA