

# PARK RIDGE

DUBAI HILLS  
ESTATE



EMAAR



MERAAS



WHERE URBAN LIVING  
AND NATURE UNITE

1, 2 and 3 bedroom apartments  
Equipped with modern amenities  
Adjacent to Central Park & Boulevard



TAKE A STROLL THROUGH THE  
SCENIC CENTRAL PARK AND  
ENJOY THE OUTDOORS

Children's Play Areas, Outdoor Gymnasium  
2 Kilometre Jogging Track, Art Installations  
Fountains, Water Features and Splash Pad



EMAAR

EMAAR

EMAAR

EMAAR

EXPLORE A RANGE OF RETAIL OUTLETS,  
CAFÉS, RESTAURANTS AND RECREATIONAL  
FACILITIES ON THE BOULEVARD

Popular Cafés and Restaurants  
A Variety of Retail Stores and Recreation Facilities  
Art Studios and Installations

BLUE

NINOMAX

LEVI'S

PAUL



VISIT DUBAI HILLS ESTATE MALL FEATURING  
HIGH STREET FASHION BRANDS, DINING  
OPTIONS AND ENTERTAINMENT VENUES

Cutting-edge Cinemas, Family Entertainment Venues  
Linked Directly to Future Metro Lines  
Leading Fashion and Retail Outlets













# AMENITIES



# DUBAI HILLS ESTATE

DUBAI MARINA  
THE DUBAI MALL  
BURJ KHALIFA

10  
MINUTES

JUMEIRAH  
BEACH

12  
MINUTES

DUBAI CREEK  
TOWER

15  
MINUTES

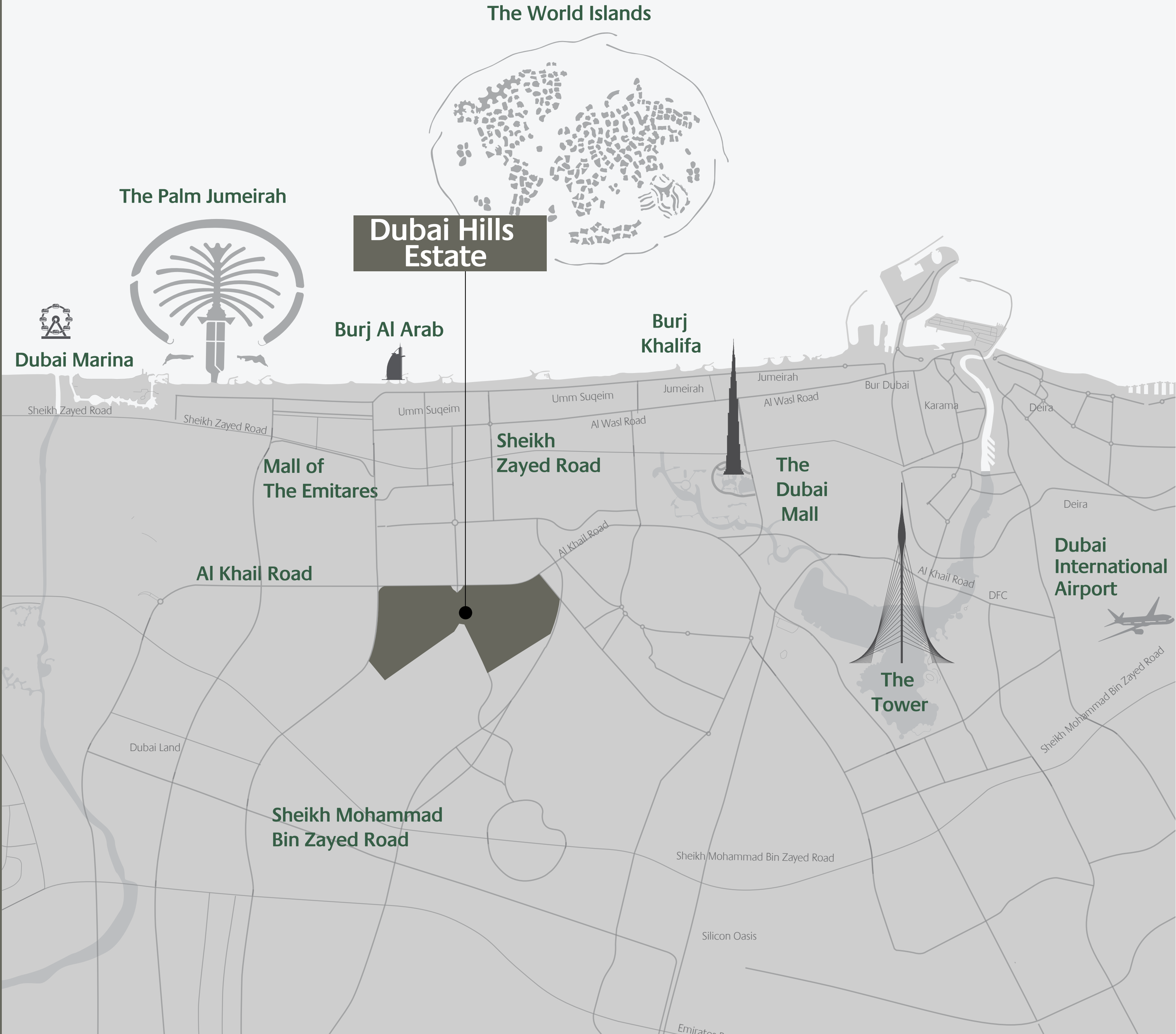
DUBAI INTL  
AIRPORT

20  
MINUTES

AL MAKTUUM  
AIRPORT

35  
MINUTES

All Distances are Approximate



# DUBAI HILLS

## ESTATE



**32,000**  
RESIDENTIAL UNITS



**282,000 SQM**  
REGIONAL MALL



**132,000**  
RESIDENTS



**3**  
SCHOOLS



**1,100 KEYS**  
**3 HOTELS**



**1.45** MILLION  
SQM  
PARKS & OPEN SPACES



**54**  
KILOMETERS  
BICYCLE ROUTES



**1.120 M SQM**  
18 HOLE GOLF COURSE



**2**  
HOSPITALS

DUBAI HILLS  
ESTATE

# PARK RIDGE

TOWER C & TOWNHOUSES

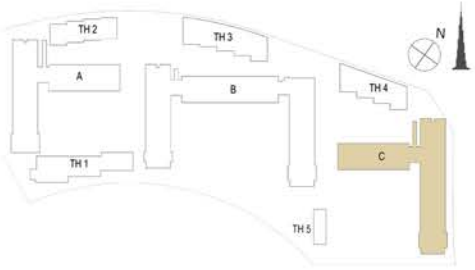
FLOOR PLANS



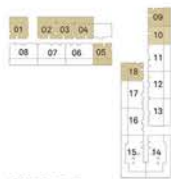
EMAAR



MERAAS



1 BEDROOM - 1A & 1B	
TOWER C	
LEVELS	UNITS
GF	01, 02, 03, 04, 05, 09, 10, 18
UNIT AREA	
56.41 Sq.m. / 607.19 Sq.ft.	
GARDEN AREA	
24.75 Sq.m. / 266.41 Sq.ft.	
TOTAL AREA	
81.16 Sq.m. / 873.60 Sq.ft.	



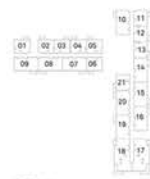
GROUND LEVEL



LEVEL 01



LEVEL 02-07



LEVEL 08



LEVEL 09



LEVEL 10



LEVEL 11



LEVEL 12



LEVEL 13-18

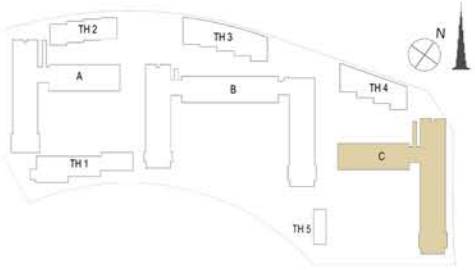


LEVEL 19-21



LEVEL 22

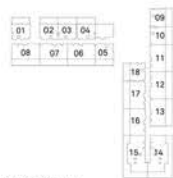
**FLOOR PLAN 1.** All dimensions are in imperial and metric, and measured from finish to finish excluding construction tolerances. 2. All materials, dimensions, and drawings are approximate only. 3. Information is subject to change without notice, at developer's absolute discretion. 4. Actual area may vary from the stated area. 5. Drawings not to scale. 6. All images used are for illustrative purposes only and do not represent the actual size, features, specifications, fittings, and furnishings. 7. The developer reserves the right to make revisions / alterations, at its absolute discretion, without any liability whatsoever.



1 BEDROOM - 1C	
TOWER C	
LEVELS	UNITS
01	03, 04, 06, 12, 13, 21
02-07	03, 04, 06, 12, 13, 21
08	03, 04, 06, 12, 13, 21
09	03, 04, 06, 12, 13, 21
10	03, 04, 06, 12, 13, 21
11	03, 04, 06, 12, 13, 21
12	03, 04, 06, 12, 13, 21
13-18	03, 04, 06, 12, 13, 21
19-21	03, 04, 06, 12, 13, 21
22	03, 04, 12

UNIT AREA	
56.55	Sq.m. / 608.70 Sq.ft.
BALCONY AREA	
3.99	Sq.m. / 42.95 Sq.ft.
TOTAL AREA	
60.54	Sq.m. / 651.65 Sq.ft.



GROUND LEVEL



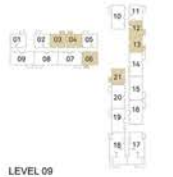
LEVEL 01



LEVEL 02-07



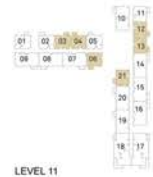
LEVEL 08



LEVEL 09



LEVEL 10



LEVEL 11



LEVEL 12



LEVEL 13-18



LEVEL 19-21



LEVEL 22

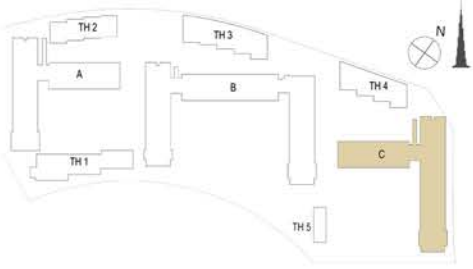
**FLOOR PLAN 1.** All dimensions are in imperial and metric, and measured from finish to finish excluding construction tolerances. 2. All materials, dimensions, and drawings are approximate only. 3. Information is subject to change without notice, at developer's absolute discretion. 4. Actual area may vary from the stated area. 5. Drawings not to scale. 6. All images used are for illustrative purposes only and do not represent the actual size, features, specifications, fittings, and furnishings. 7. The developer reserves the right to make revisions / alterations, at its absolute discretion, without any liability whatsoever.



EMAAR



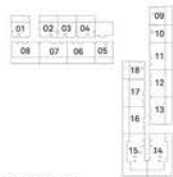
MERAAS



1 BEDROOM - 1D	
TOWER C	
LEVELS	UNITS
01	01, 02, 05, 11
02-07	01, 02, 05, 11
08	01, 02, 05, 11
09	01, 02, 05, 11
10	01, 02, 05, 11
11	01, 02, 05, 11
12	01, 02, 05, 11
13-18	01, 02, 05, 11
19-21	01, 02, 05, 11
22	02

<b>UNIT AREA</b>	
56.31	Sq.m. / 606.12 Sq.ft.
<b>BALCONY AREA</b>	
3.99	Sq.m. / 42.95 Sq.ft.
<b>TOTAL AREA</b>	
60.30	Sq.m. / 649.07 Sq.ft.



GROUND LEVEL



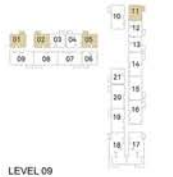
LEVEL 01



LEVEL 02-07



LEVEL 08



LEVEL 09



LEVEL 10



LEVEL 11



LEVEL 12



LEVEL 13-18



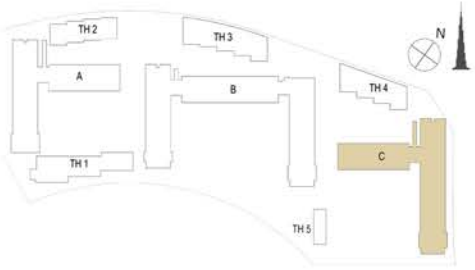
LEVEL 19-21



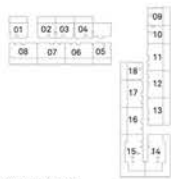
LEVEL 22

**FLOOR PLAN 1.** All dimensions are in imperial and metric, and measured from finish to finish excluding construction tolerances. 2. All materials, dimensions, and drawings are approximate only. 3. Information is subject to change without notice, at developer's absolute discretion. 4. Actual area may vary from the stated area. 5. Drawings not to scale. 6. All images used are for illustrative purposes only and do not represent the actual size, features, specifications, fittings, and furnishings. 7. The developer reserves the right to make revisions / alterations, at its absolute discretion, without any liability whatsoever.

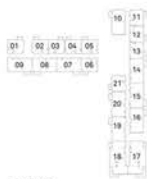




1 BEDROOM - 1E	
TOWER C	
LEVELS	UNITS
19-21	17
22	08
UNIT AREA	
57.04 Sq.m. / 613.97 Sq.ft.	
BALCONY AREA	
2.92 Sq.m. / 31.43 Sq.ft.	
TOTAL AREA	
59.96 Sq.m. / 645.40 Sq.ft.	



GROUND LEVEL



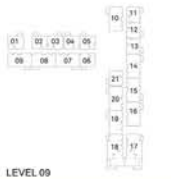
LEVEL 01



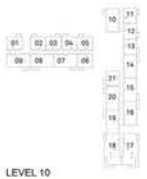
LEVEL 02-07



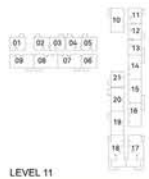
LEVEL 08



LEVEL 09



LEVEL 10



LEVEL 11



LEVEL 12



LEVEL 13-18



LEVEL 19-21



LEVEL 22

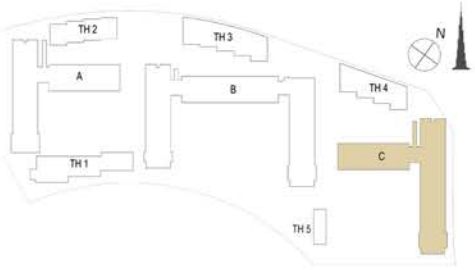
**FLOOR PLAN 1.** All dimensions are in imperial and metric, and measured from finish to finish excluding construction tolerances. 2. All materials, dimensions, and drawings are approximate only. 3. Information is subject to change without notice, at developer's absolute discretion. 4. Actual area may vary from the stated area. 5. Drawings not to scale. 6. All images used are for illustrative purposes only and do not represent the actual size, features, specifications, fittings, and furnishings. 7. The developer reserves the right to make revisions / alterations, at its absolute discretion, without any liability whatsoever.



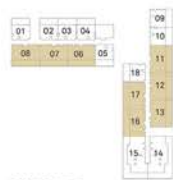
EMAAR



MERAAS



2 BEDROOM - 2A	
TOWER C	
LEVELS	UNITS
GF	06, 07, 08, 11, 12, 13, 16, 17
UNIT AREA	
87.54 Sq.m. / 942.27 Sq.ft.	
GARDEN AREA	
39.22 Sq.m. / 422.16 Sq.ft.	
TOTAL AREA	
126.76 Sq.m. / 1364.43 Sq.ft.	



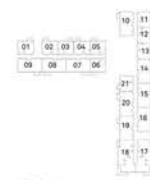
GROUND LEVEL



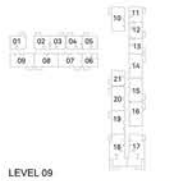
LEVEL 01



LEVEL 02-07



LEVEL 08



LEVEL 09



LEVEL 10



LEVEL 11



LEVEL 12



LEVEL 13-18

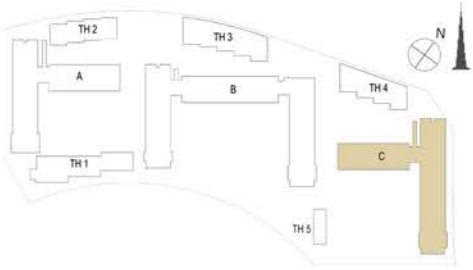


LEVEL 19-21

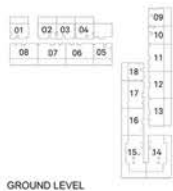


LEVEL 22

**FLOOR PLAN 1.** All dimensions are in imperial and metric, and measured from finish to finish excluding construction tolerances. 2. All materials, dimensions, and drawings are approximate only. 3. Information is subject to change without notice, at developer's absolute discretion. 4. Actual area may vary from the stated area. 5. Drawings not to scale. 6. All images used are for illustrative purposes only and do not represent the actual size, features, specifications, fittings, and furnishings. 7. The developer reserves the right to make revisions / alterations, at its absolute discretion, without any liability whatsoever.



2 BEDROOM - 2C	
TOWER C	
LEVELS	UNITS
01	07, 08, 09, 10, 14, 15, 16, 19, 20
02-07	07, 08, 09, 10, 14, 15, 16, 19, 20
08	07, 08, 09, 10, 14, 15, 16, 19, 20
09	07, 08, 09, 10, 14, 15, 16, 19, 20
10	07, 08, 09, 10, 14, 15, 16, 19, 20
11	07, 08, 09, 10, 14, 15, 16, 19, 20
12	07, 08, 09, 10, 14, 15, 16, 19, 20
13-18	07, 08, 09, 10, 14, 15, 16, 19, 20
19-21	07, 08, 09, 10, 14, 15, 16, 19, 20
22	01, 05, 06, 07, 10, 11
UNIT AREA	
87.60 Sq.m. / 942.92 Sq.ft.	
BALCONY AREA	
5.18 Sq.m. / 55.76 Sq.ft.	
TOTAL AREA	
92.78 Sq.m. / 998.68 Sq.ft.	



GROUND LEVEL



LEVEL 01



LEVEL 02-07



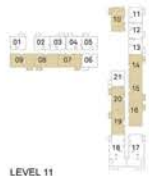
LEVEL 08



LEVEL 09



LEVEL 10



LEVEL 11



LEVEL 12



LEVEL 13-18

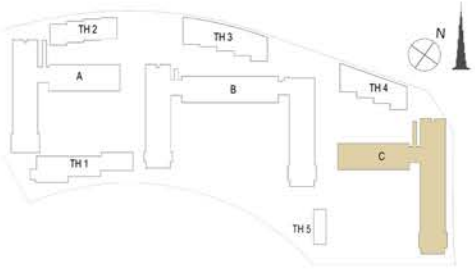


LEVEL 19-21

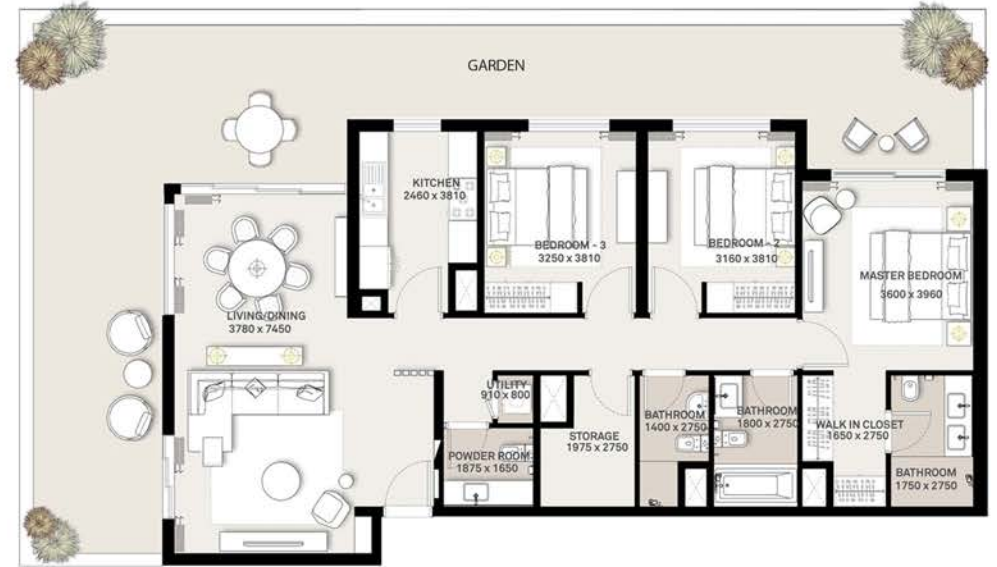


LEVEL 22

**FLOOR PLAN 1.** All dimensions are in imperial and metric, and measured from finish to finish excluding construction tolerances. 2. All materials, dimensions, and drawings are approximate only. 3. Information is subject to change without notice, at developer's absolute discretion. 4. Actual area may vary from the stated area. 5. Drawings not to scale. 6. All images used are for illustrative purposes only and do not represent the actual size, features, specifications, fittings, and furnishings. 7. The developer reserves the right to make revisions / alterations, at its absolute discretion, without any liability whatsoever.



3 BEDROOM - 3A	
TOWER C	
LEVELS	UNITS
GF	14, 15
UNIT AREA	
130.79 Sq.m. / 1407.81 Sq.ft.	
GARDEN AREA	
76.97 Sq.m. / 828.50 Sq.ft.	
TOTAL AREA	
207.76 Sq.m. / 2236.31 Sq.ft.	



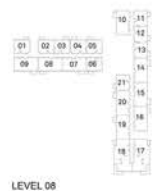
GROUND LEVEL



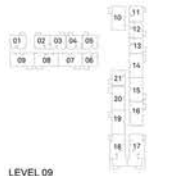
LEVEL 01



LEVEL 02-07



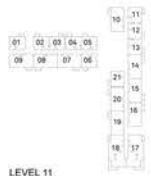
LEVEL 08



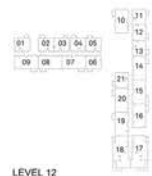
LEVEL 09



LEVEL 10



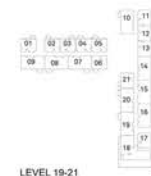
LEVEL 11



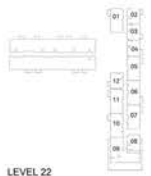
LEVEL 12



LEVEL 13-18

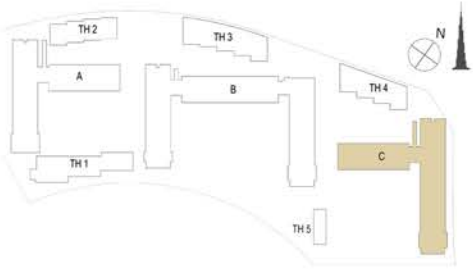


LEVEL 19-21

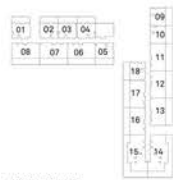


LEVEL 22

**FLOOR PLAN 1.** All dimensions are in imperial and metric, and measured from finish to finish excluding construction tolerances. 2. All materials, dimensions, and drawings are approximate only. 3. Information is subject to change without notice, at developer's absolute discretion. 4. Actual area may vary from the stated area. 5. Drawings not to scale. 6. All images used are for illustrative purposes only and do not represent the actual size, features, specifications, fittings, and furnishings. 7. The developer reserves the right to make revisions / alterations, at its absolute discretion, without any liability whatsoever.



3 BEDROOM - 3B	
TOWER C	
LEVELS	UNITS
01	17, 18
02-07	17, 18
08	17, 18
09	17, 18
10	17, 18
11	17, 18
12	17, 18
13-18	17, 18
<b>UNIT AREA</b>	
130.79 Sq.m. / 1407.81 Sq.ft.	
<b>BALCONY AREA</b>	
16.72 Sq.m. / 179.97 Sq.ft.	
<b>TOTAL AREA</b>	
147.51 Sq.m. / 1587.78 Sq.ft.	



GROUND LEVEL



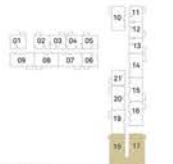
LEVEL 01



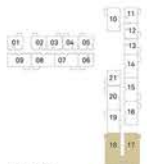
LEVEL 02-07



LEVEL 08



LEVEL 09



LEVEL 10



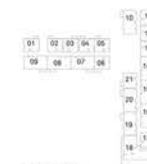
LEVEL 11



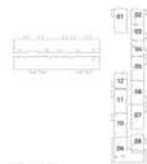
LEVEL 12



LEVEL 13-18



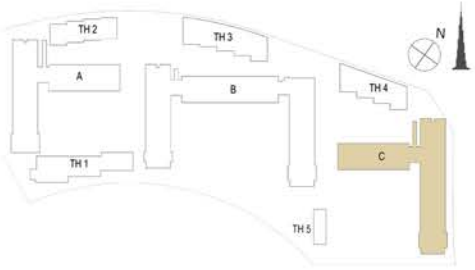
LEVEL 19-21



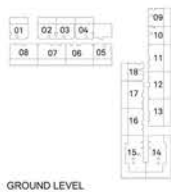
LEVEL 22

**FLOOR PLAN 1.** All dimensions are in imperial and metric, and measured from finish to finish excluding construction tolerances. 2. All materials, dimensions, and drawings are approximate only. 3. Information is subject to change without notice, at developer's absolute discretion. 4. Actual area may vary from the stated area. 5. Drawings not to scale. 6. All images used are for illustrative purposes only and do not represent the actual size, features, specifications, fittings, and furnishings. 7. The developer reserves the right to make revisions / alterations, at its absolute discretion, without any liability whatsoever.





3 BEDROOM - 3D	
TOWER C	
LEVELS	UNITS
19-21	18
22	09
<b>UNIT AREA</b>	
140.15 Sq.m. / 1508.56 Sq.ft.	
<b>BALCONY AREA</b>	
95.38 Sq.m. / 1026.66 Sq.ft.	
<b>TOTAL AREA</b>	
235.53 Sq.m. / 2535.22 Sq.ft.	



GROUND LEVEL



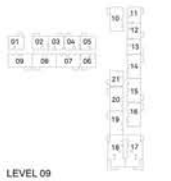
LEVEL 01



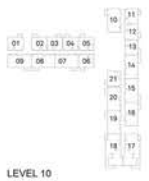
LEVEL 02-07



LEVEL 08



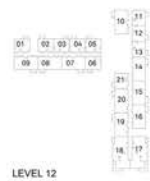
LEVEL 09



LEVEL 10



LEVEL 11



LEVEL 12



LEVEL 13-16

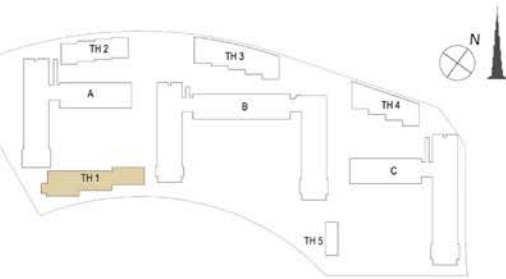


LEVEL 19-21



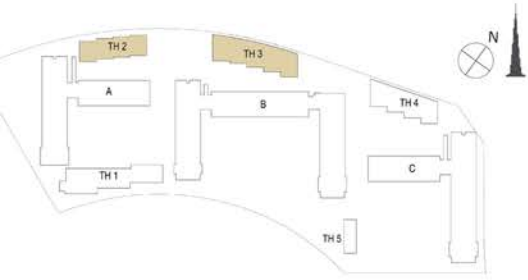
LEVEL 22

**FLOOR PLAN 1.** All dimensions are in imperial and metric, and measured from finish to finish excluding construction tolerances. 2. All materials, dimensions, and drawings are approximate only. 3. Information is subject to change without notice, at developer's absolute discretion. 4. Actual area may vary from the stated area. 5. Drawings not to scale. 6. All images used are for illustrative purposes only and do not represent the actual size, features, specifications, fittings, and furnishings. 7. The developer reserves the right to make revisions / alterations, at its absolute discretion, without any liability whatsoever.

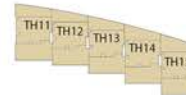
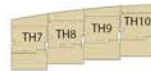
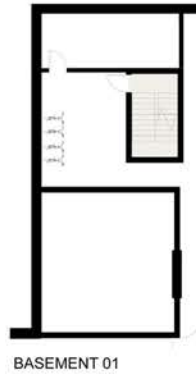


PODIUM TOWNHOUSES - TYPE A	
LEVELS	UNITS
	TH01, TH02, TH03, TH04, TH05, TH06
UNIT AREA	
	145.77 Sq.m. / 1569.06 Sq.ft.
GARDEN AREA	
	92.45 Sq.m. / 995.12 Sq.ft.
TOTAL AREA	
	238.22 Sq.m. / 2564.18 Sq.ft.

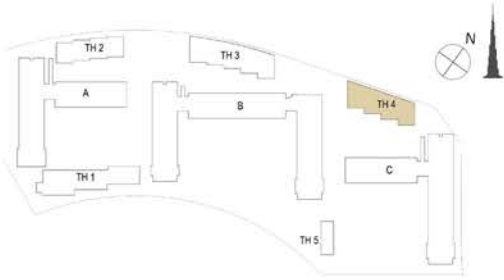




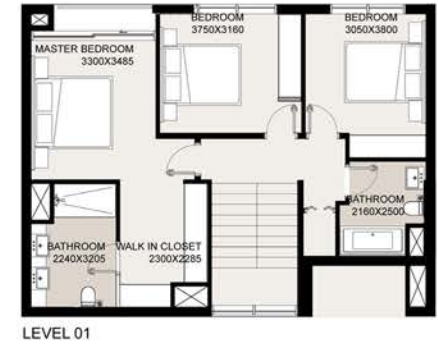
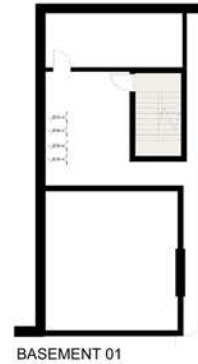
PODIUM TOWNHOUSES-TYPE B	
LEVELS	UNITS
	TH07, TH08, TH09, TH10, TH11, TH12, TH13, TH14, TH15
UNIT AREA	
	160.64 Sq.m. / 1729.11 Sq.ft.
GARDEN AREA	
	90.80 Sq.m. / 977.36 Sq.ft.
TOTAL AREA	
	251.44 Sq.m. / 2706.47 Sq.ft.



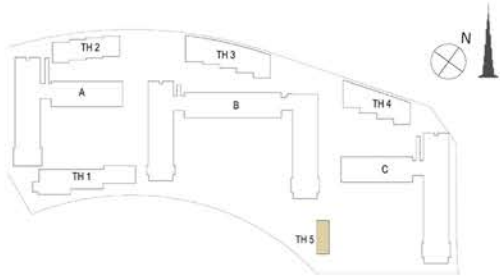




PODIUM TOWNHOUSES -TYPE C	
LEVELS	UNITS
	TH16, TH17, TH18, TH19
UNIT AREA	
160.74 Sq.m. / 1730.19 Sq.ft.	
GARDEN AREA	
93.78 Sq.m. / 1009.44 Sq.ft.	
TOTAL AREA	
254.52 Sq.m. / 2739.63 Sq.ft.	



**FLOOR PLAN 1.** All dimensions are in imperial and metric, and measured from finish to finish excluding construction tolerances. 2. All materials, dimensions, and drawings are approximate only. 3. Information is subject to change without notice, at developer's absolute discretion. 4. Actual area may vary from the stated area. 5. Drawings not to scale. 6. All images used are for illustrative purposes only and do not represent the actual size, features, specifications, fittings, and furnishings. 7. The developer reserves the right to make revisions / alterations, at its absolute discretion, without any liability whatsoever.



PODIUM TOWNHOUSES -TYPE D	
LEVELS	UNITS
	TH20, TH21
<b>UNIT AREA</b>	
160.74 Sq.m. / 1730.19 Sq.ft.	
<b>GARDEN AREA</b>	
24.53 Sq.m. / 264.04 Sq.ft.	
<b>TOTAL AREA</b>	
185.59 Sq.m. / 1997.68 Sq.ft.	



GROUND LEVEL



LEVEL 01



# DUBAI HILLS ESTATE

## PARK RIDGE

For more information on **Park Ridge** at **Dubai Hills Estate**, please call 800 36227(UAE) or +971 4 366 1688 (International). Visit our online sales centre at [emaar.com](http://emaar.com) or any of our sales centres across the UAE.

### DUBAI

Dubai Hills Estate Sales Pavillion: Umm Suqeim Road  
Emaar Sales Center: Downtown Dubai  
Dubai Creek Harbour Sales Centre: Ras Al Khor

### ABU DHABI

Emaar Sales Centre: Al Nahda Tower, Ground Floor, 4th Street, Corniche, Al Muroor Road

Open from Saturday - Thursday, from 8.30am - 6pm

 **EMAAR** |  **MERAAS**

# دبي هيلز استيت

## بارك ريدج

للمزيد من المعلومات حول بارك ريدج في دبي هيلز استيت، الرجاء الاتصال بالرقم (٨٠٠٣٦٢٢٧) في الإمارات العربية المتحدة أو +٩٧١ ٤ ٣٦٦ ١٦٨٨ (دولي) أو قم بزيارة مركز مبيعاتنا الإلكتروني على الموقع [emaar.com](http://emaar.com)

### دبي

مركز مبيعات دبي هيلز استيت على طريق أم سقيم  
مركز مبيعات إعمار في وسط مدينة دبي  
مركز مبيعات خور دبي في رأس الخور

### أبوظبي

مركز مبيعات إعمار في برج النهضة، الشارع الرابع،  
الكورنيش، طريق المرور - أبوظبي

السبت إلى الخميس من الساعة ٨:٣٠ صباحاً حتى الساعة ٦ مساءً

 **إعمار** |  **إعمار**