

DAMAC



ROYAL GOLF
BOUTIQUE VILLAS
JUMEIRAH GOLF ESTATES

DAMAC

LIVE THE LUXURY

DAMAC Properties has been at the forefront of the Middle East's luxury real estate market since 2002, delivering award-winning residential, commercial and leisure properties across the region, including the UAE, Saudi Arabia, Qatar, Jordan, Lebanon, and Oman, as well as the United Kingdom. Since then, the Company has delivered over 24,000 homes, with a development portfolio of more than 40,000 at various stages of planning and progress. This includes 10,000 hotel rooms, serviced hotel apartments and hotel villas, managed by its wholly-owned DAMAC Hotels & Resorts.*

Joining forces with some of the world's most eminent fashion and lifestyle brands, DAMAC has brought new and exciting living concepts to the market in collaborations that include a golf course by Tiger Woods Design, managed by The Trump Organization, and luxury homes in association with Versace, Fendi, Just Cavalli, Paramount Hotels & Resorts and The Radisson Group. With a consistent vision, and strong momentum, DAMAC Properties is building the next generation of Middle Eastern luxury living.

DAMAC places a great emphasis on philanthropy and corporate social responsibility. As such, the Hussain Sajwani - DAMAC Foundation, a joint initiative between DAMAC Group and its Chairman, Hussain Sajwani, is supporting the One Million Arab Coders Initiative. The programme was launched by Vice President and Prime Minister of the UAE, and Ruler of Dubai, His Highness Sheikh Mohammed bin Rashid Al Maktoum, and is focused on creating an empowered society through learning and skills development.

*30th September 2018.



THE ENCHANTMENT OF SPANISH ARCHITECTURE. THE ALLURE OF WORLD-CLASS AMENITIES. NOW ALL YOURS TO EXPERIENCE.





READY FOR LIVING

The Royal Golf Boutique Villas are set within the Wildflower District of Jumeirah Golf Estates. Each home is beautifully designed, with open plan living arrangements, in a variety of sizes to suit your needs. The only thing missing is you.

Disclaimer: Unless stated otherwise, all accessories and interior finishes such as wallpaper, chandeliers, furniture, electronics, white goods, curtains, hard and soft landscaping, pavements, features, swimming pool(s) and other elements displayed in the brochure, or within the show villa or between the plot boundary and the unit, are not part of the standard unit and are shown for illustrative purposes only.



ACTUAL IMAGE OF SHOW VILLA

AN EXTRAORDINARY ESTATE

Easily one of the world's most prestigious residential golf communities, Jumeirah Golf Estates is a luxury development with golf courses inspired by the natural elements of fire and earth.



REMARKABLE HOMES

A gated community featuring individually designed homes set amid stunning landscapes, the Jumeirah Golf Estates community blends all the accoutrements of modern living with the beauty of Mother Nature.



AN ENCHANTING EXPERIENCE

Enter your villa and prepare to be enthralled. Each detail is the epitome of historic Spanish architecture. From the terracotta tiles to cast concrete ornaments, all are manifestations of a glorious bygone era.

Finer details include gently pitched tiled roofs, smooth plastered walls, arched door and window openings, tall double-hung windows, canvas awnings and decorative iron-work. To complete the experience, homes are set amidst abundant foliage and around the spectacular golf course.



A LEGENDARY LIFESTYLE

Inspired by European and North American parklands, the course is landscaped with dense vegetation, punctuated by striking water features, to create an oasis of natural beauty. A perfect backdrop to the classical Spanish architecture of the homes, the Earth golf course has been carefully designed to enhance the natural beauty of its surroundings.



A LIVING LUXURY

Each Royal Golf Boutique Villa looks out across the prestigious neighbourhood and truly exemplifies a regal lifestyle.

Take a stroll through the palatial living rooms that open out into a beautiful central courtyard; or enjoy al fresco breakfasts with stunning golf course views, across lush landscaped gardens. Later, immerse yourself in a good book in the study and follow on with a fine meal in the stately dining room.

Disclaimer: Unless stated otherwise, all accessories and interior finishes such as wallpaper, chandeliers, furniture, electronics, white goods, curtains, hard and soft landscaping, pavements, features, swimming pool(s) and other elements displayed in the brochure, or within the show villa or between the plot boundary and the unit, are not part of the standard unit and are shown for illustrative purposes only.



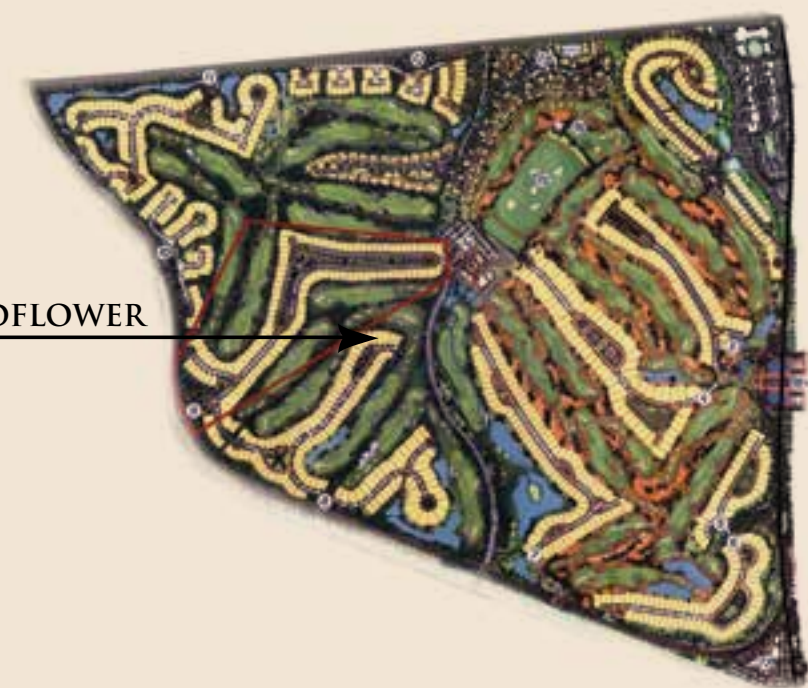
SPECTACULAR SLUMBER

Imagine waking up every morning in the most perfect bedroom. Open the doors, walk out on to the terrace and begin your day with breathtaking golf course views.

Bedrooms feature walk-in closets, sizeable en-suite bathrooms, along with lounge areas, perfect for some quiet 'me time'.

Disclaimer: Unless stated otherwise, all accessories and interior finishes such as wallpaper, chandeliers, furniture, electronics, white goods, curtains, hard and soft landscaping, pavements, features, swimming pool(s) and other elements displayed in the brochure, or within the show villa or between the plot boundary and the unit, are not part of the standard unit and are shown for illustrative purposes only.

WILDFLOWER



AN INSPIRING LOCATION

Such a gloriously serene location and yet Jumeirah Golf Estates is surprisingly close to the excitement of the city.

This prestigious property is a few minutes away from Dubai's landmark locations such as Palm Jumeirah, Dubai Marina, Dubai Parks and Resorts and prominent business hubs. A 10-minute drive will take you right into the heart of the city where an array of shopping, leisure and entertainment awaits.





VILLA TYPE A

This villa type offers five bedrooms, along with three reception rooms. Ideally set on plots of over 600 square metres, these villas have a built-up area of over 480 square metres. Each villa is individually designed to efficiently utilise the available space and natural light, while being perfectly aligned with the golf course.

TYPE A
GROUND FLOOR



TYPE A
FIRST FLOOR



*Unless stated above, all accessories and interior finishes such as wallpaper, chandeliers, furniture, electronics, white goods, curtains, hard and soft landscaping, pavements, features, swimming pool(s) and other elements displayed in the brochure, or within the show apartment / villa or between the plot boundary and the unit, are not part of the standard unit and exhibited for illustrative purposes only.



VILLA TYPE B

This villa type offers five to seven bedrooms, along with four reception rooms. Set on plots of over 700 square metres, these villas have a built-up area of over 560 square metres. Each villa is individually designed with features such as courtyards, balconies and patios to maximise space inside and out.

TYPE B
GROUND FLOOR



TYPE B
FIRST FLOOR



*Unless stated above, all accessories and interior finishes such as wallpaper, chandeliers, furniture, electronics, white goods, curtains, hard and soft landscaping, pavements, features, swimming pool(s) and other elements displayed in the brochure, or within the show apartment / villa or between the plot boundary and the unit, are not part of the standard unit and exhibited for illustrative purposes only.



VILLA TYPE C

This villa type offers four to five bedrooms, along with four reception rooms. Located on plots of over 730 square metres, these villas have a built-up area of over 560 square metres. Each villa is individually designed with unique features such as spiral staircases, marble flooring and contemporary stonework.

TYPE C
GROUND FLOOR



TYPE C
FIRST FLOOR



*Unless stated above, all accessories and interior finishes such as wallpaper, chandeliers, furniture, electronics, white goods, curtains, hard and soft landscaping, pavements, features, swimming pool(s) and other elements displayed in the brochure, or within the show apartment / villa or between the plot boundary and the unit, are not part of the standard unit and exhibited for illustrative purposes only.



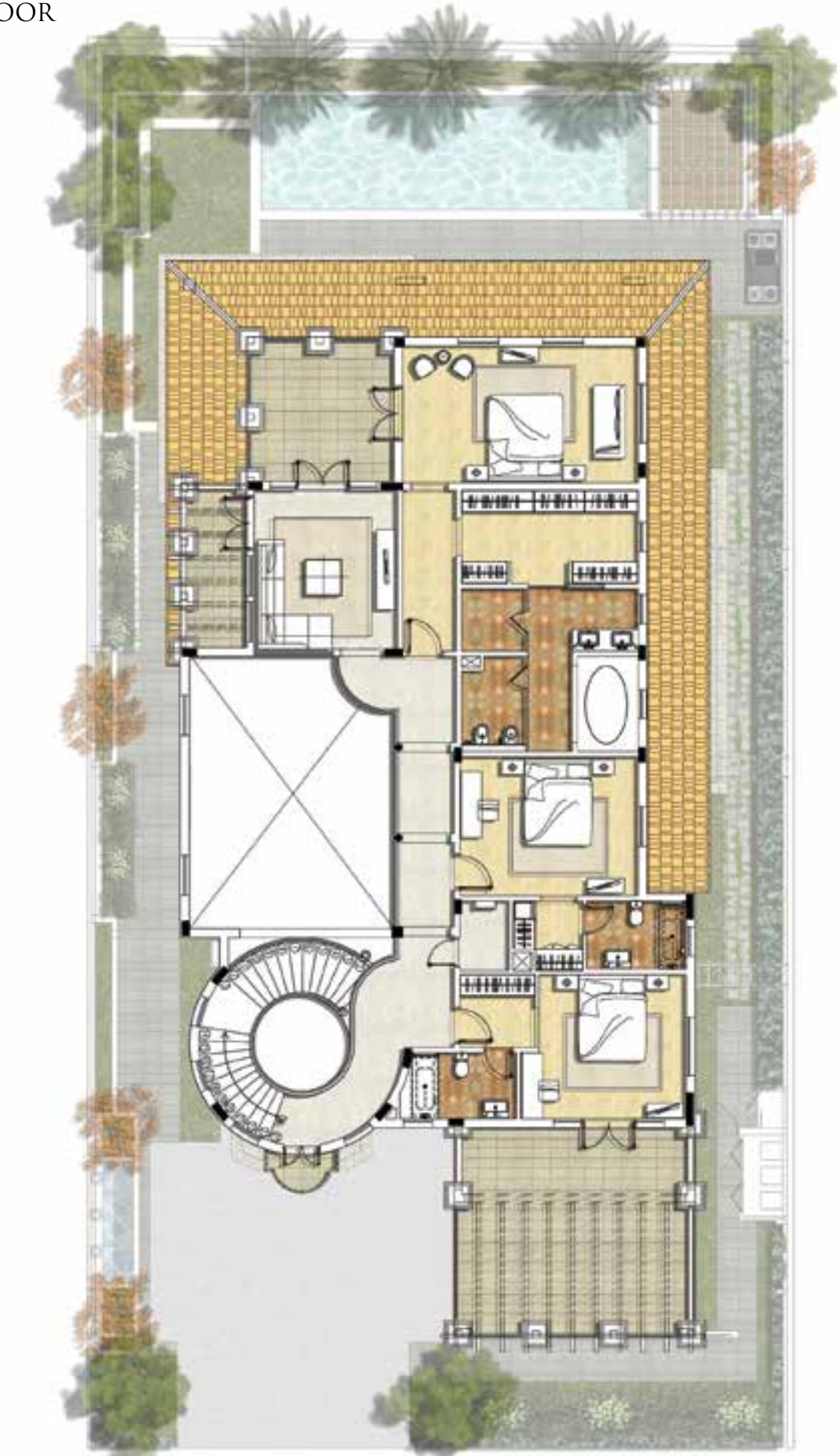
VILLA TYPE D

This villa type offers four to six bedrooms, along with four reception rooms. Nestled on plots of over 700 square metres, these villas have a built-up area of over 800 square metres. Each villa overlooks the lush fairways of the golf course and their design includes wooden verandas and courtyard features to enhance the striking views.

TYPE D
GROUND FLOOR



TYPE D
FIRST FLOOR



*Unless stated above, all accessories and interior finishes such as wallpaper, chandeliers, furniture, electronics, white goods, curtains, hard and soft landscaping, pavements, features, swimming pool(s) and other elements displayed in the brochure, or within the show apartment / villa or between the plot boundary and the unit, are not part of the standard unit and exhibited for illustrative purposes only.



VILLA TYPE E

This villa type offers six to seven bedrooms, along with five reception rooms. Picturesquely set on 1,200-square-metre plots, these mansions have a built-up area of 960 square metres, each of which is tastefully designed to truly represent a distinguished lifestyle.

TYPE E
GROUND FLOOR



TYPE E
FIRST FLOOR



*Unless stated above, all accessories and interior finishes such as wallpaper, chandeliers, furniture, electronics, white goods, curtains, hard and soft landscaping, pavements, features, swimming pool(s) and other elements displayed in the brochure, or within the show apartment / villa or between the plot boundary and the unit, are not part of the standard unit and exhibited for illustrative purposes only.

LUXURY BY APPOINTMENT

Contact us at any of our offices or visit damacproperties.com

UNITED ARAB EMIRATES

Tel: +971 4 301 9999
PO Box 2195, Dubai, UAE

Dubai

Park Towers
Dubai International Financial Centre
Tel: +971 4 376 3600
Fax: +971 4 373 1490
E-mail: dubai@damacgroup.com

Upper Crest

Al Asayel Street
Downtown, Dubai, UAE
Tel: +971 4 3212352
E-mail: dubai@damacgroup.com

DAMAC Hills Sales Centre 1 Gate 1

Sheikh Zayed bin Hamdan
Al Nahyan Street
Tel: +971 4 818 3300
E-mail: dubai@damacgroup.com

DAMAC Hills Sales Centre 2 Gate 3

Hessa Street
Opposite Golf Terrace apts
Tel: +971 4 245 8555
E-mail: dubai@damacgroup.com

KUWAIT

Al Bawader Real Estate Broker WLL
Office 42A, 12th Floor
Panasonic Tower, Building 6, Block 14
Al Qibla Street, Kuwait City
Tel: +965 2249 8727
Fax: + 965 2245 6766
E-mail: kuwait@damacgroup.com

KINGDOM OF SAUDI ARABIA

Riyadh

DAMAC Exclusiva
Olaya District
King Fahd Road
PO Box 102460
Tel: +966 11 835 0300
E-mail: ksa@damacgroup.com

Jeddah

Al Jawharah Tower
Next to Rosewood Jeddah Hotel
Said Ibn Amir, Ash Shati
Tel: +966 12 233 0210
Fax: +966 12 284 5446
E-mail: ksa@damacgroup.com

JORDAN

Al Istithmar Street
Abdali Project
Amman
Opposite Abdali Mall Gate #1
Tel: +962 6 510 7000
Fax: +962 6 565 7896
E-mail: amman@damacgroup.com

LEBANON

DAMAC Properties Lebanon SAL
Unit 1801, 18th Floor
DAMAC Tower
Omar Daouk Street
Mina El Hosn, Beirut Central District
Tel: +961 81 647 200
E-mail: beirut@damacgroup.com

QATAR

Building 90, New Solta area
Ali bin Abi Talib Street
Next to Omar bin Al Khattab Health Centre
Tel: +974 44 666 986
Fax: +974 44 554 576
E-mail: doha@damacgroup.com

UNITED KINGDOM

4th Floor 100 Brompton Road
Opposite Harrods
Knightsbridge, London
SW3 1ER, United Kingdom
Tel: +44 (0) 207 590 8050
E-mail: sales@damactower.co.uk

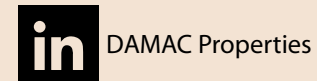
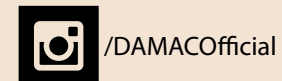
CHINA

Beijing

Offices 203, 205, 206
Macau Center
No 8, Wangfujing East Street
Dongcheng District, Beijing
China, 100006

Shanghai

Room 803
8th Floor, Building 2
1266 West Nanjing Road
Jing'an District, Shanghai
China, 200040



DAMAC
LIVE THE LUXURY

DAMACPROPERTIES.COM