

A GLAMOROUS ADDRESS

Inspired by the quintessential Beverly Hills lifestyle, DAMAC Properties brings the finest elements of this iconic destination to Dubai at DAMAC Hills. Spanning 42 million square feet, the development is home to a variety of incredible properties with an array of amenities that will satisfy the most discerning of tastes.



90210 BOUTIQUE VILLAS

Come home to a new concept of luxury living. These serviced and furnished villas offer you the comfort and warmth of home, with the bespoke services of the world's finest hotels. Choose from villas overlooking the international golf course, or with vistas across lush parkland, in stylish neighbourhoods of like-minded individuals.



OUT OF THIS WORLD

When you step into these furnished villas, you'll be greeted by interiors that exude an aura of elegance and sophistication. Every detail and each piece of furniture has been finely crafted, and selected to suit your needs.



Disclaimer: Unless stated otherwise, all accessories and interior finishes such as wallpaper, chandeliers, furniture, electronics, white goods, curtains, hard and soft landscaping, pavements, features, swimming pool(s) and other elements displayed in the brochure, or within the show apartment or between the plot boundary and the unit, are not part of the standard unit and are shown for illustrative purposes only.



LUXURY SERVICES AND BEYOND

The 90210 Boutique Villas are furnished and come with an array of tailor-made services to help you get the most from life. How about some private training from a PGA certified coach; or a variety of concierge services – whatever it is you'd like, just ask.

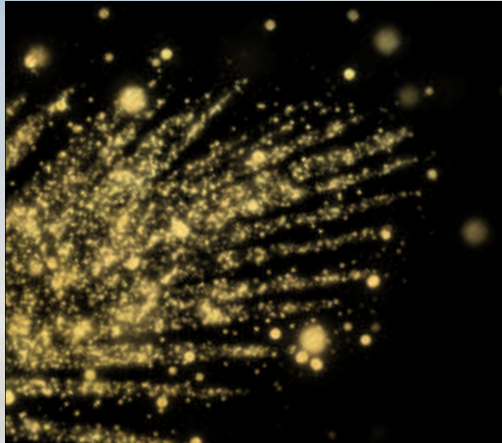
Disclaimer: Unless stated otherwise, all accessories and interior finishes such as wallpaper, chandeliers, furniture, electronics, white goods, curtains, hard and soft landscaping, pavements, features, swimming pool(s) and other elements displayed in the brochure, or within the show apartment or between the plot boundary and the unit, are not part of the standard unit and are shown for illustrative purposes only.



GOLF-FACING VILLAS

This unique collection of villas offers you the best golfing lifestyle in the emirate. Tee off your day with incredible views of the greens, and invite friends and family over for social gatherings in an unforgettable setting.

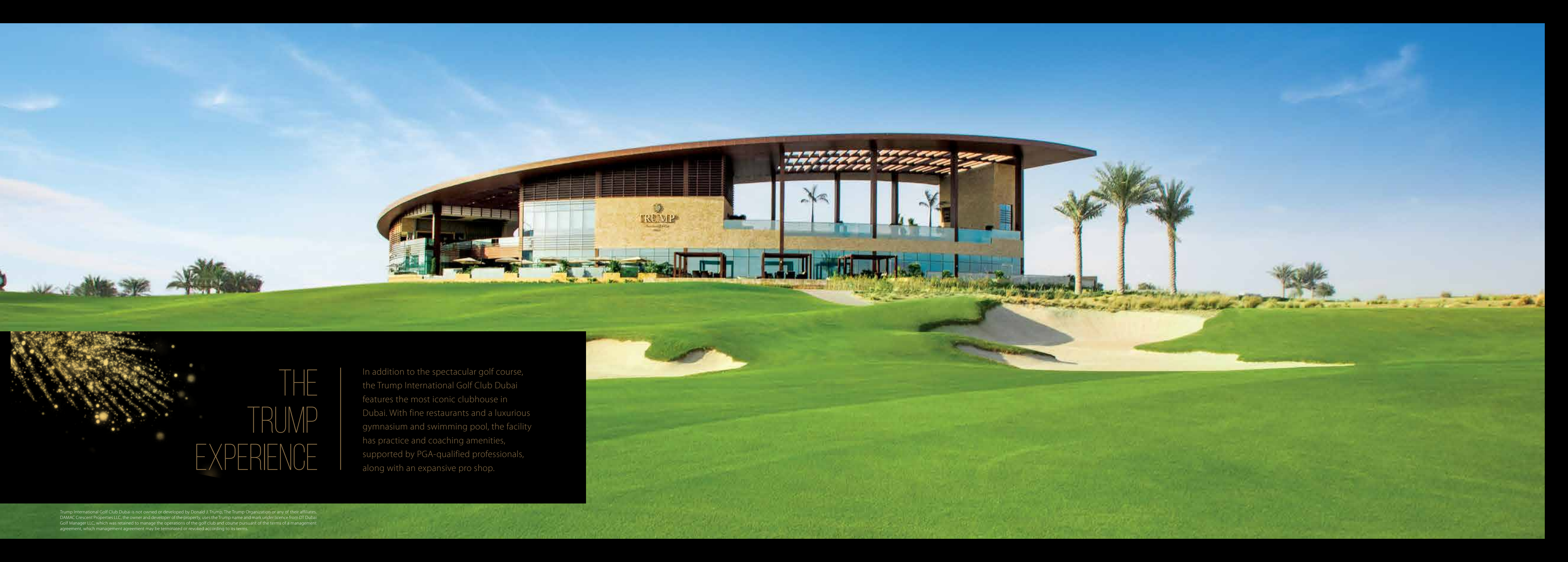




FOR
CHAMPIONS

DAMAC Hills is the most luxurious golfing community, with the Trump International Golf Club Dubai at its heart. The course is designed by Gil Hanse, architect of the 2016 Olympic Games golf course in Rio de Janeiro and one of the most sought-after names in the game.

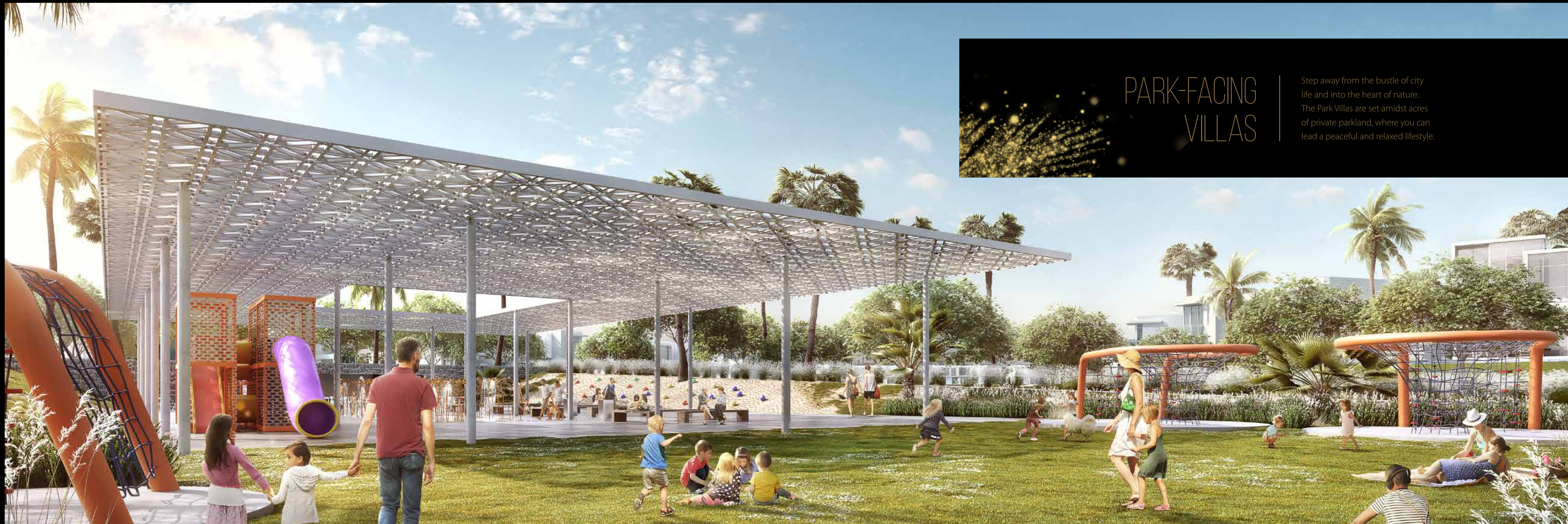

TRUMP
International Golf Club
DUBAI



THE TRUMP EXPERIENCE

In addition to the spectacular golf course, the Trump International Golf Club Dubai features the most iconic clubhouse in Dubai. With fine restaurants and a luxurious gymnasium and swimming pool, the facility has practice and coaching amenities, supported by PGA-qualified professionals, along with an expansive pro shop.

Trump International Golf Club Dubai is not owned or developed by Donald J. Trump, The Trump Organization or any of their affiliates. DAMAC Crescent Properties LLC, the owner and developer of the property, uses the Trump name and mark under licence from DT Dubai Golf Manager LLC, which was retained to manage the operations of the golf club and course pursuant of the terms of a management agreement, which management agreement may be terminated or revoked according to its terms.

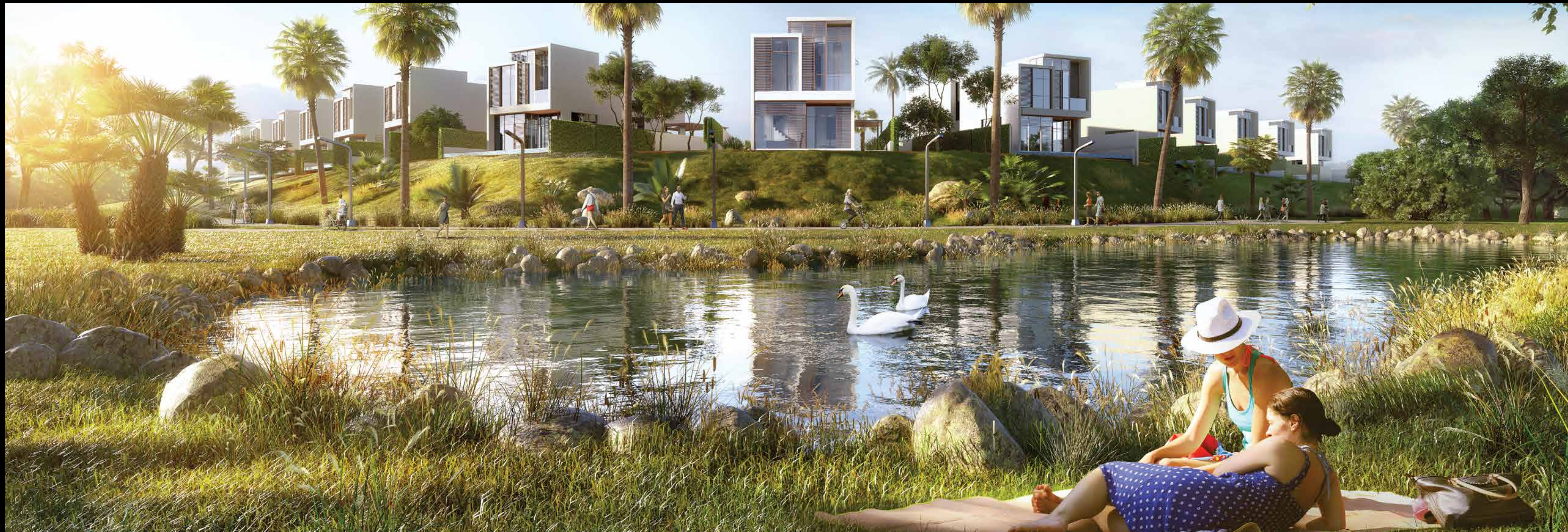


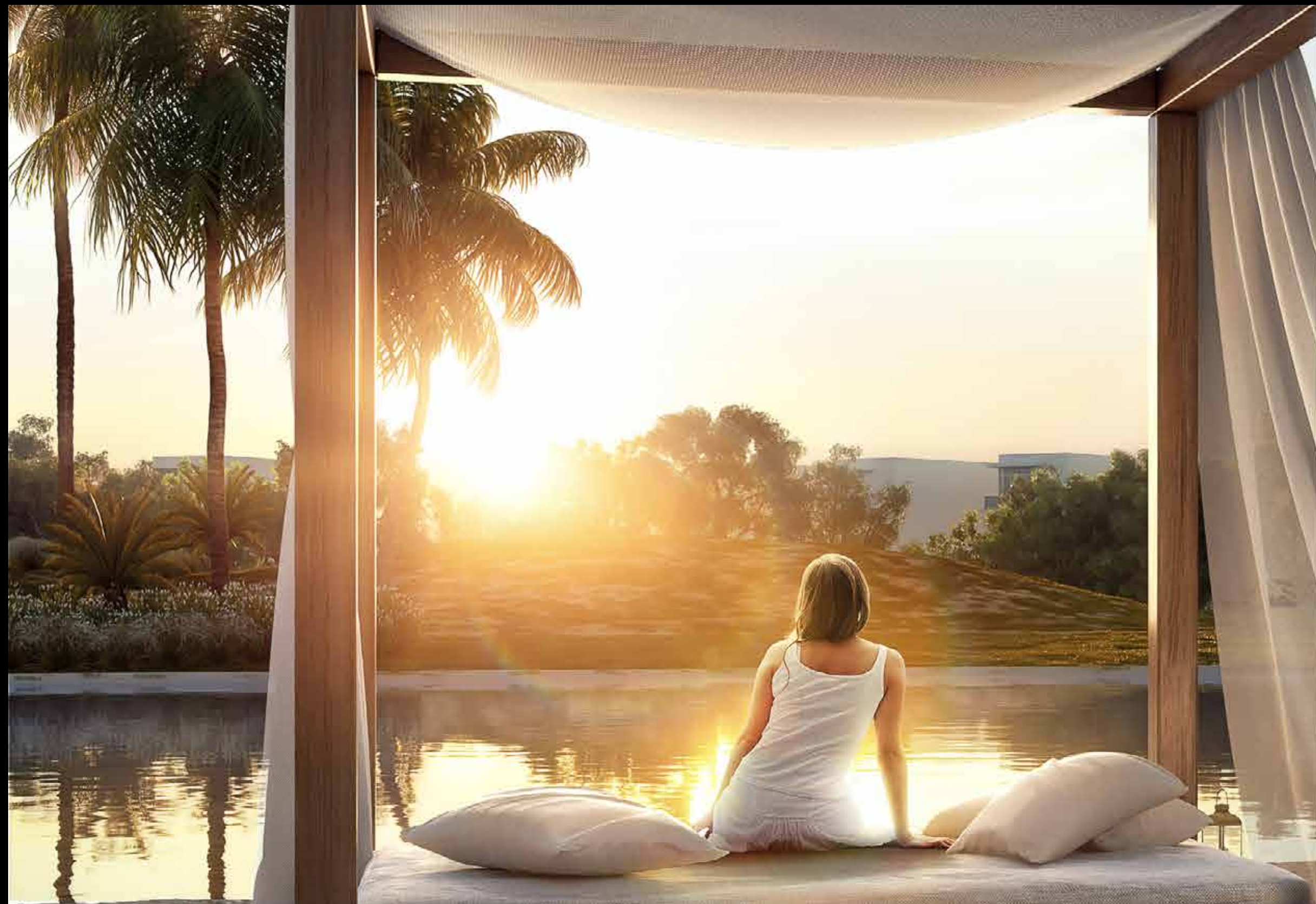
PARK-FACING VILLAS

Step away from the bustle of city life and into the heart of nature. The Park Villas are set amidst acres of private parkland, where you can lead a peaceful and relaxed lifestyle.

IMAGINE HAVING
SAFA PARK AND ZABEEL PARK*
IN YOUR BACK YARD

*Safa and Zabeel are public parks in Dubai.







THE NEIGHBOURHOOD VILLAS

The neighbourhood is a contemporary reflection of the ambitions of an up-and-coming generation. Choose your villa from a variety of arrangements and be part of a community that offers something for everyone.



A DREAM LOCATION

Just a short journey from the centre of the city, and yet feels like a world away. DAMAC Hills is set within the city's flourishing and most sought-after expanses of Dubailand. Its strategic location allows easy access to the main road network that puts the city within a few minutes' reach.



BROOKFIELD



PELHAM



V-5

V-3

V2-P

TH-M-S

TH-M-D

TH-M1

TH-M

TH-L-A

TH-L

RP-EM

RP-M

QUEENS MEADOW



VD-2

V-7

V-5

V-3

TH-L

TH-D

TH-K

TH-H

An aerial photograph of a large, curved residential building, likely a hotel or apartment complex. The building is light-colored with a prominent curved facade. Numerous units are visible, each labeled with a number. The units are arranged in a grid-like pattern along the curve of the building. The building is surrounded by lush greenery, including palm trees and other tropical plants. A road or driveway runs alongside the building, and there are some smaller structures or parking areas visible in the background. The overall scene depicts a well-maintained and modern residential or commercial development in a tropical setting.

V-4

V2-P

TH-M-D

TH-M1

TH-M

TH-L-A

TH-L

RP-M

RP-EM

RP-EE

An aerial photograph of a residential development, likely a subdivision. The lots are arranged in a grid-like pattern, with each lot labeled with a unique alphanumeric code. The labels are color-coded: orange for the top-left section, blue for the top-right section, and green for the bottom section. The development is surrounded by greenery and a road is visible on the right side. The overall shape of the development is irregular, with a curved boundary on the left and right sides.

V-4

V2-P

TH-M-

TH-M-D

TH-M1

TH-L

RP-M

RP-EM

SILVER SPRINGS



VD-2	VD-1	V-5	V-4	V-3	TH-L	TH-D	TH-K	TH-H
------	------	-----	-----	-----	------	------	------	------

THE FIELD



VD-2	VD-1	VD-1i	V-5	V-4	V-3	V-2	TH-L-A	TH-L	TH-D	TH-H
------	------	-------	-----	-----	-----	-----	--------	------	------	------

THE FLORA



- VD-1
- V-5
- V-4
- TH-L
- TH-D
- TH-H
- TH-K

THE TURF



- VD-2
- VD-1
- V-5
- V-4
- V2-P
- V-2
- TH-L-A
- TH-L
- TH-D
- TH-K
- TH-H

An aerial photograph of a large residential development, likely a multi-story apartment complex. The building is elongated and U-shaped, with numerous units visible. Each unit is labeled with a number and a color-coded background. The colors include orange, yellow, blue, green, and pink. The units are arranged in rows, with some units having a '2F' prefix. The building is surrounded by greenery and a paved area. The overall layout is organized and systematic.



The image shows an aerial view of a residential development site. The site is divided into several sections with various building layouts and parking spaces. The buildings are color-coded: blue for multi-unit buildings, orange for single-unit buildings, and yellow for a specific building. The parking lots are marked with numbers and letters. The site is surrounded by greenery and a road.

Top Section (Blue Buildings):

- 2A062F, 2A063F
- 2A080B, 2A079B, 2A081B, 2A078B, 2A082B, 2A077B, 2A083B, 2A076B, 2A084B, 2A075B, 2A085B, 2A074B, 2A086B, 2A073B, 2A087B, 2A072B, 2A088B, 2A071B, 2A089B, 2A070B, 2A090B, 2A069B, 2A091B, 2A068B, 2A092B, 2A067B, 2A093B, 2A066B, 2A094B, 2A065B, 2A095B, 2A064B
- 2A021B, 2A020B
- 2A019F, 2A018F
- 2A300F, 2A301F
- 2A017F, 2A016F
- 2A012F, 2A013F, 2A014B, 2A015B

Middle Section (Orange Buildings):

- 2A121B, 2A120B, 2A096B, 2A097B, 2A098B, 2A099B, 2A100B, 2A101B, 2A102B, 2A103B, 2A104B, 2A194B, 2A195B, 2A105B, 2A106B, 2A107B, 2A108B
- 2A119B, 2A118B, 2A117B, 2A116B, 2A115B, 2A114B, 2A113B, 2A112B, 2A199B, 2A198B, 2A197B, 2A111B, 2A110B, 2A109B

Bottom Section (Blue Buildings):

- 2A123B, 2A124B, 2A125B, 2A126B, 2A127B, 2A128B, 2A129B, 2A130B, 2A131B
- 2A134B, 2A135B, 2A136B, 2A137B, 2A302B, 2A303B, 2A304, 2A138B, 2A139B, 2A140B, 2A141B, 2A142B
- 2A161B, 2A160B, 2A159B, 2A158B, 2A157B, 2A156B, 2A155B, 2A154B, 2A153B, 2A152B, 2A151B, 2A150B, 2A149B, 2A148B, 2A147B, 2A146B, 2A145B, 2A144B, 2A143B



DIRECTLY FACING GOLF COURSE



VD-2



GROUND FLOOR



FIRST FLOOR

Disclaimer: Unless stated otherwise, all accessories and interior finishes such as wallpaper, chandeliers, furniture, electronics, white goods, curtains, hard and soft landscaping, pavements, features, swimming pool(s) and other elements displayed in the brochure, or within the show apartment or between the plot boundary and the unit, are not part of the standard unit and are shown for illustrative purposes only.

DIRECTLY FACING GOLF COURSE



VD-1



GROUND FLOOR



FIRST FLOOR

Disclaimer: Unless stated otherwise, all accessories and interior finishes such as wallpaper, chandeliers, furniture, electronics, white goods, curtains, hard and soft landscaping, pavements, features, swimming pool(s) and other elements displayed in the brochure, or within the show apartment or between the plot boundary and the unit, are not part of the standard unit and are shown for illustrative purposes only.



V-7



GROUND FLOOR



FIRST FLOOR

DIRECTLY FACING GOLF COURSE / WITHIN GOLF COMMUNITY / WITHIN PARK COMMUNITY



V-5



GROUND FLOOR



FIRST FLOOR

Disclaimer: Unless stated otherwise, all accessories and interior finishes such as wallpaper, chandeliers, furniture, electronics, white goods, curtains, hard and soft landscaping, pavements, features, swimming pool(s) and other elements displayed in the brochure, or within the show apartment or between the plot boundary and the unit, are not part of the standard unit and are shown for illustrative purposes only.

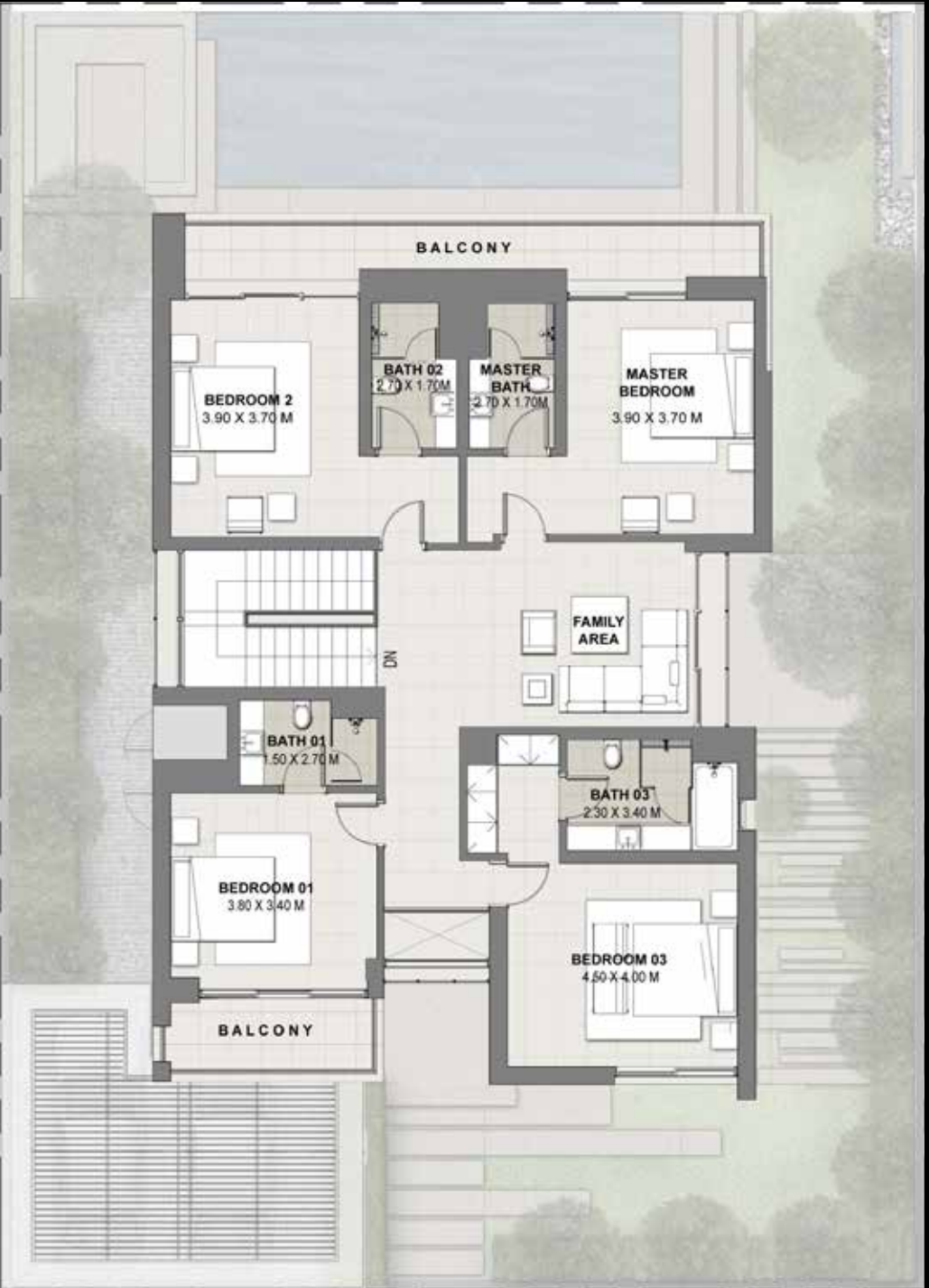
DIRECTLY FACING PARK / WITHIN GOLF COMMUNITY



V-4



GROUND FLOOR



FIRST FLOOR

Disclaimer: Unless stated otherwise, all accessories and interior finishes such as wallpaper, chandeliers, furniture, electronics, white goods, curtains, hard and soft landscaping, pavements, features, swimming pool(s) and other elements displayed in the brochure, or within the show apartment or between the plot boundary and the unit, are not part of the standard unit and are shown for illustrative purposes only.

DIRECTLY FACING GOLF COURSE / DIRECTLY FACING PARK / WITHIN GOLF COMMUNITY



V-3



GROUND FLOOR



FIRST FLOOR

Disclaimer: Unless stated otherwise, all accessories and interior finishes such as wallpaper, chandeliers, furniture, electronics, white goods, curtains, hard and soft landscaping, pavements, features, swimming pool(s) and other elements displayed in the brochure, or within the show apartment or between the plot boundary and the unit, are not part of the standard unit and are shown for illustrative purposes only.

WITHIN GOLF COMMUNITY / DIRECTLY FACING PARK / WITHIN PARK COMMUNITY



V-2



GROUND FLOOR



FIRST FLOOR

Disclaimer: Unless stated otherwise, all accessories and interior finishes such as wallpaper, chandeliers, furniture, electronics, white goods, curtains, hard and soft landscaping, pavements, features, swimming pool(s) and other elements displayed in the brochure, or within the show apartment or between the plot boundary and the unit, are not part of the standard unit and are shown for illustrative purposes only.

WITHIN PARK COMMUNITY



TH-M1



GROUND FLOOR

Disclaimer: Unless stated otherwise, all accessories and interior finishes such as wallpaper, chandeliers, furniture, electronics, white goods, curtains, hard and soft landscaping, pavements, features, swimming pool(s) and other elements displayed in the brochure, or within the show apartment or between the plot boundary and the unit, are not part of the standard unit and are shown for illustrative purposes only.



FIRST FLOOR

WITHIN PARK COMMUNITY



TH-M / TH-M-D



GROUND FLOOR



FIRST FLOOR

Disclaimer: Unless stated otherwise, all accessories and interior finishes such as wallpaper, chandeliers, furniture, electronics, white goods, curtains, hard and soft landscaping, pavements, features, swimming pool(s) and other elements displayed in the brochure, or within the show apartment or between the plot boundary and the unit, are not part of the standard unit and are shown for illustrative purposes only.

DIRECTLY FACING GOLF COURSE WITHIN GOLF COMMUNITY / DIRECTLY FACING PARK WITHIN PARK COMMUNITY



TH-L-A / TH-L



GROUND FLOOR



TH-L-A FIRST FLOOR



TH-L FIRST FLOOR

Disclaimer: Unless stated otherwise, all accessories and interior finishes such as wallpaper, chandeliers, furniture, electronics, white goods, curtains, hard and soft landscaping, pavements, features, swimming pool(s) and other elements displayed in the brochure, or within the show apartment or between the plot boundary and the unit, are not part of the standard unit and are shown for illustrative purposes only.

WITHIN GOLF COMMUNITY



TH-K



GROUND FLOOR



FIRST FLOOR

Disclaimer: Unless stated otherwise, all accessories and interior finishes such as wallpaper, chandeliers, furniture, electronics, white goods, curtains, hard and soft landscaping, pavements, features, swimming pool(s) and other elements displayed in the brochure, or within the show apartment or between the plot boundary and the unit, are not part of the standard unit and are shown for illustrative purposes only.

WITHIN GOLF COMMUNITY



TH-D



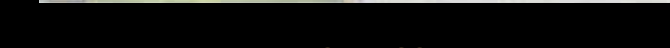
GROUND FLOOR

Disclaimer: Unless stated otherwise, all accessories and interior finishes such as wallpaper, chandeliers, furniture, electronics, white goods, curtains, hard and soft landscaping, pavements, features, swimming pool(s) and other elements displayed in the brochure, or within the show apartment or between the plot boundary and the unit, are not part of the standard unit and are shown for illustrative purposes only.



FIRST FLOOR

A modern, two-story house with a swimming pool and lush landscaping. The house features large glass windows and doors, a covered patio area, and a swimming pool with a small waterfall. The landscaping includes palm trees, tropical plants, and a large white sofa in the foreground. The scene is set in a sunny, outdoor environment.



DAMAC

DAMACPROPERTIES.COM