



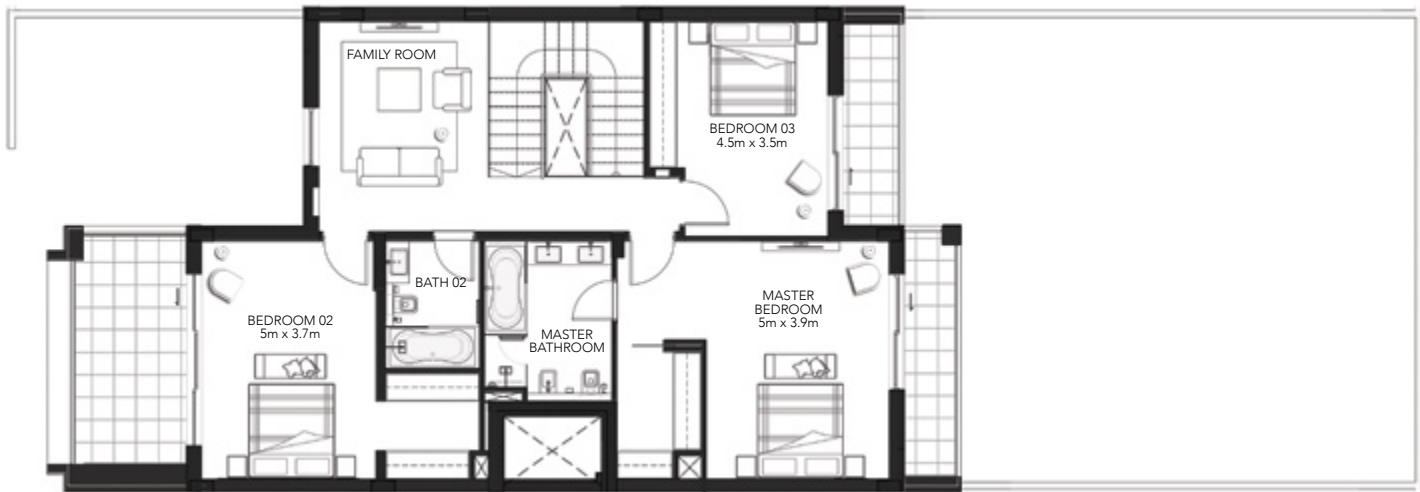
ياس اكرز
YAS ACRES

FLOOR PLANS

3 Bedroom Townhouse - 3MA



Ground Floor



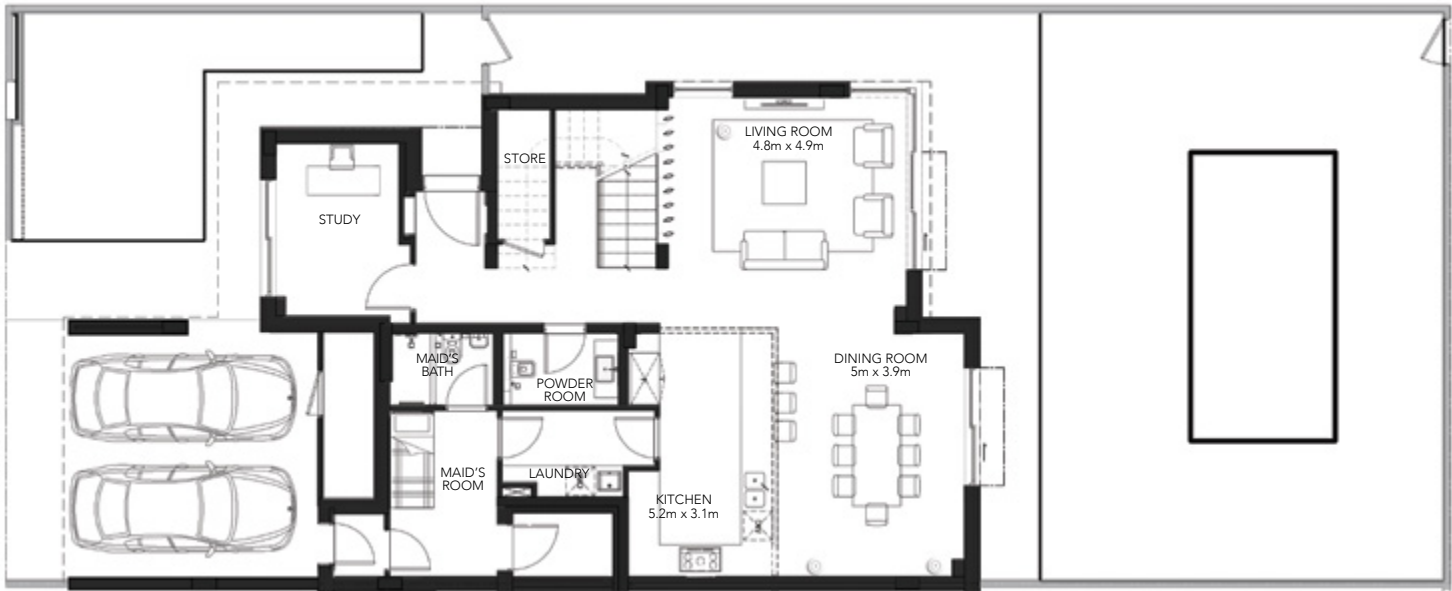
First Floor

Gross Sellable Area
Total 312 m²

DISCLAIMER: Note that this floorplan was produced prior to the completion of construction and is indicative only and not to scale. Changes may be made during the development and areas, fittings, finishes and specifications are subject to change without notice in accordance with the provision of the Sale and Purchase Agreement. The furniture, pools and landscaping depicted within the Villas and Plots are not included with any sale and the positioning of furniture should not be taken to indicate the final positions of power points, TV connections and the like. Prospective purchasers must rely on their own enquiries. Bulkheads necessary for services and structure are not depicted.



3 Bedroom Townhouse - 3EA



Ground Floor



First Floor

Gross Sellable Area
Total 333 m²

DISCLAIMER: Note that this floorplan was produced prior to the completion of construction and is indicative only and not to scale. Changes may be made during the development and areas, fittings, finishes and specifications are subject to change without notice in accordance with the provision of the Sale and Purchase Agreement. The furniture, pools and landscaping depicted within the Villas and Plots are not included with any sale and the positioning of furniture should not be taken to indicate the final positions of power points, TV connections and the like. Prospective purchasers must rely on their own enquiries. Bulkheads necessary for services and structure are not depicted.



3 Bedroom Townhouse - 3MB



Ground Floor



First Floor

Gross Sellable Area
Total 315 m²

DISCLAIMER: Note that this floorplan was produced prior to the completion of construction and is indicative only and not to scale. Changes may be made during the development and areas, fittings, finishes and specifications are subject to change without notice in accordance with the provision of the Sale and Purchase Agreement. The furniture, pools and landscaping depicted within the Villas and Plots are not included with any sale and the positioning of furniture should not be taken to indicate the final positions of power points, TV connections and the like. Prospective purchasers must rely on their own enquiries. Bulkheads necessary for services and structure are not depicted.



3 Bedroom Townhouse - 3EB



Ground Floor



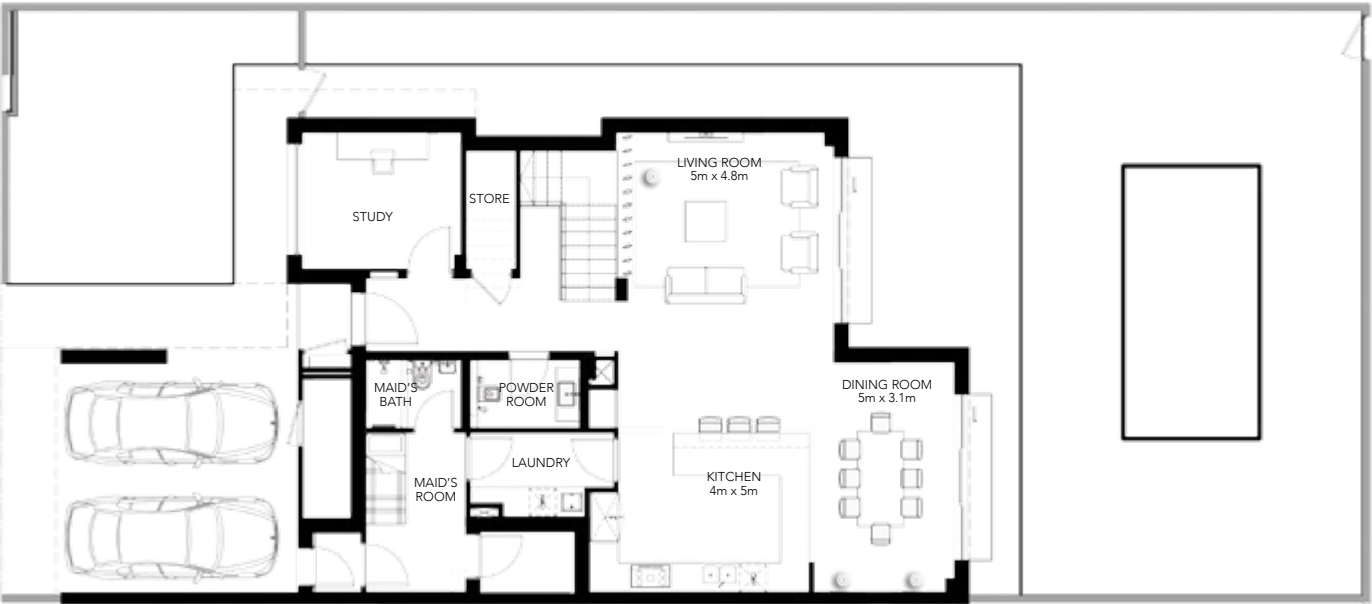
First Floor

Gross Sellable Area
Total 333 m²

DISCLAIMER: Note that this floorplan was produced prior to the completion of construction and is indicative only and not to scale. Changes may be made during the development and areas, fittings, finishes and specifications are subject to change without notice in accordance with the provision of the Sale and Purchase Agreement. The furniture, pools and landscaping depicted within the Villas and Plots are not included with any sale and the positioning of furniture should not be taken to indicate the final positions of power points, TV connections and the like. Prospective purchasers must rely on their own enquiries. Bulkheads necessary for services and structure are not depicted.



3 Bedroom Duplex - 3X



Ground Floor



First Floor

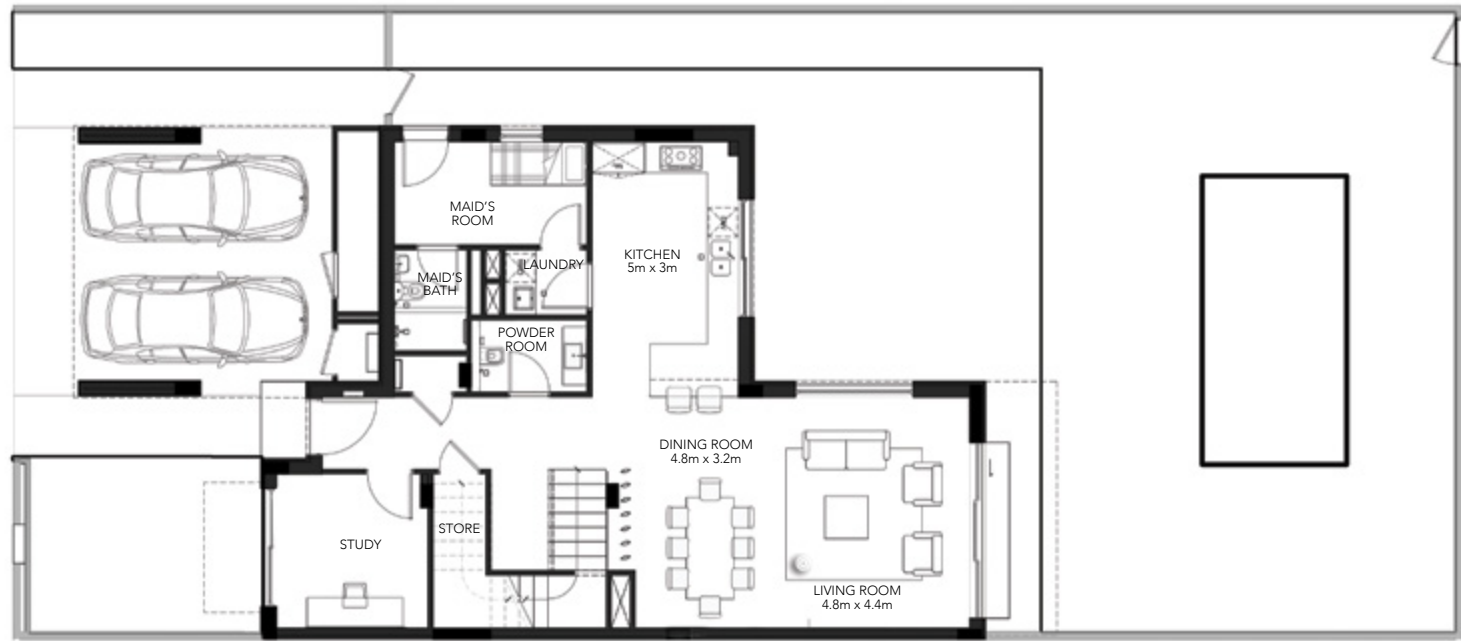
Gross Sellable Area

Total 340 m²

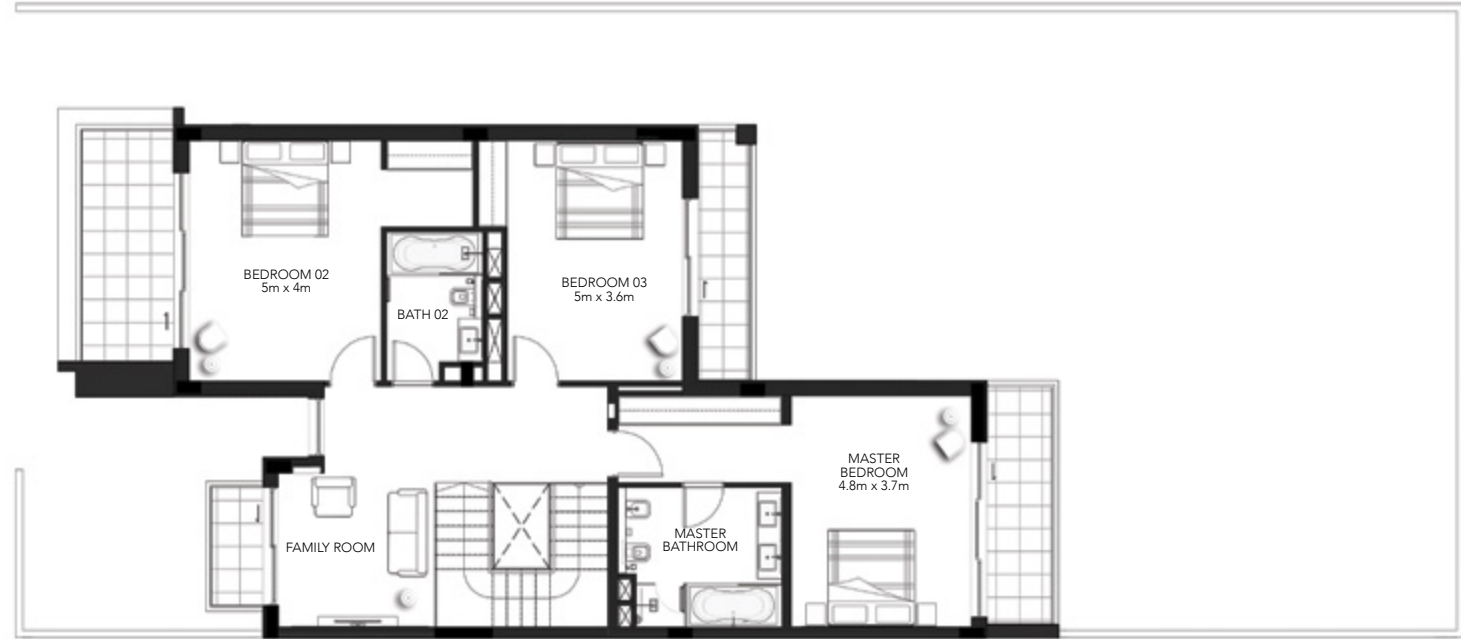
DISCLAIMER: Note that this floorplan was produced prior to the completion of construction and is indicative only and not to scale. Changes may be made during the development and areas, fittings, finishes and specifications are subject to change without notice in accordance with the provision of the Sale and Purchase Agreement. The furniture, pools and landscaping depicted within the Villas and Plots are not included with any sale and the positioning of furniture should not be taken to indicate the final positions of power points, TV connections and the like. Prospective purchasers must rely on their own enquiries. Bulkheads necessary for services and structure are not depicted.



3 Bedroom Duplex - 3Y



Ground Floor



First Floor

Gross Sellable Area

Total 314 m²

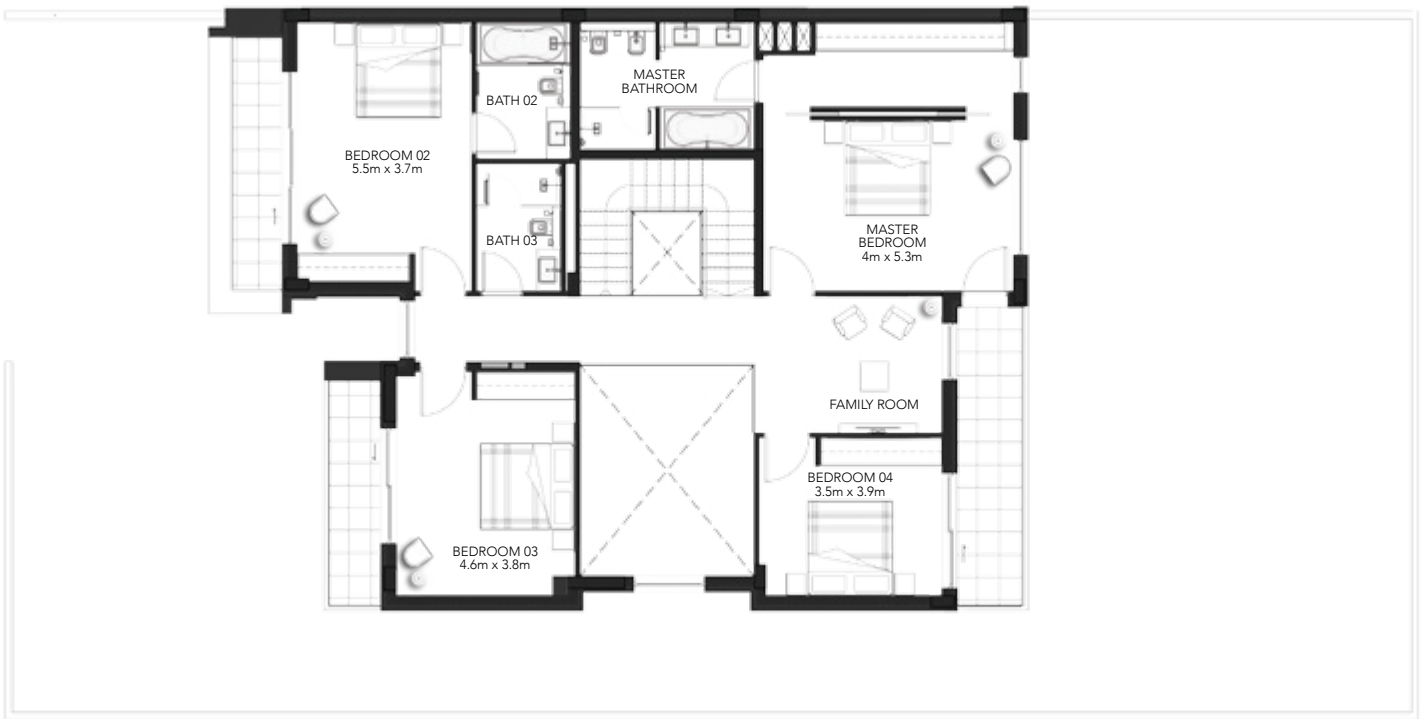
DISCLAIMER: Note that this floorplan was produced prior to the completion of construction and is indicative only and not to scale. Changes may be made during the development and areas, fittings, finishes and specifications are subject to change without notice in accordance with the provision of the Sale and Purchase Agreement. The furniture, pools and landscaping depicted within the Villas and Plots are not included with any sale and the positioning of furniture should not be taken to indicate the final positions of power points, TV connections and the like. Prospective purchasers must rely on their own enquiries. Bulkheads necessary for services and structure are not depicted.



4 Bedroom Duplex - 4X



Ground Floor



First Floor

Gross Sellable Area
Total 347 m²

DISCLAIMER: Note that this floorplan was produced prior to the completion of construction and is indicative only and not to scale. Changes may be made during the development and areas, fittings, finishes and specifications are subject to change without notice in accordance with the provision of the Sale and Purchase Agreement. The furniture, pools and landscaping depicted within the Villas and Plots are not included with any sale and the positioning of furniture should not be taken to indicate the final positions of power points, TV connections and the like. Prospective purchasers must rely on their own enquiries. Bulkheads necessary for services and structure are not depicted.



4 Bedroom Duplex - 4Y



Ground Floor

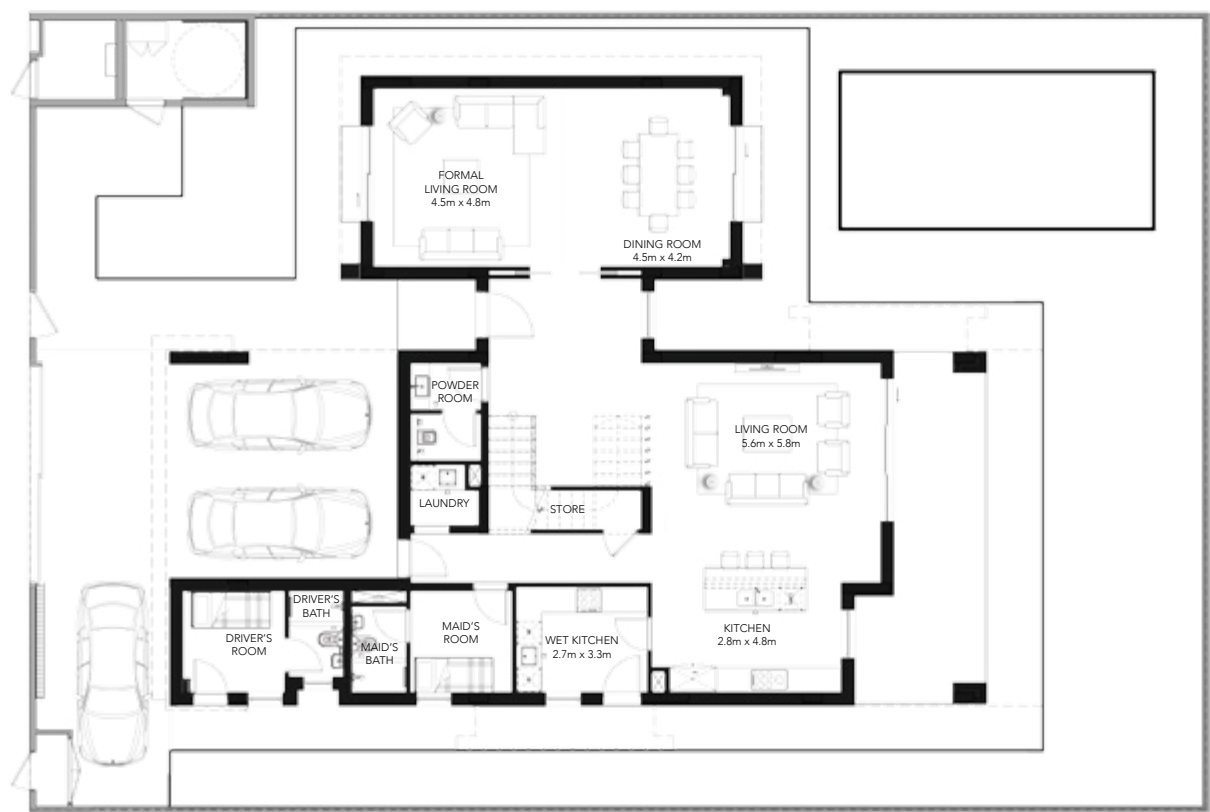


First Floor

Gross Sellable Area
Total 354 m²

DISCLAIMER: Note that this floorplan was produced prior to the completion of construction and is indicative only and not to scale. Changes may be made during the development and areas, fittings, finishes and specifications are subject to change without notice in accordance with the provision of the Sale and Purchase Agreement. The furniture, pools and landscaping depicted within the Villas and Plots are not included with any sale and the positioning of furniture should not be taken to indicate the final positions of power points, TV connections and the like. Prospective purchasers must rely on their own enquiries. Bulkheads necessary for services and structure are not depicted.

4 Bedroom Villa Golf - 4F



Ground Floor



First Floor

Gross Sellable Area

Total 453 m²

DISCLAIMER: Note that this floorplan was produced prior to the completion of construction and is indicative only and not to scale. Changes may be made during the development and areas, fittings, finishes and specifications are subject to change without notice in accordance with the provision of the Sale and Purchase Agreement. The furniture, pools and landscaping depicted within the Villas and Plots are not included with any sale and the positioning of furniture should not be taken to indicate the final positions of power points, TV connections and the like. Prospective purchasers must rely on their own enquiries. Bulkheads necessary for services and structure are not depicted.



4 Bedroom Villa Golf - 4SA



Ground Floor



First Floor

Gross Sellable Area

Total 435 m²

DISCLAIMER: Note that this floorplan was produced prior to the completion of construction and is indicative only and not to scale. Changes may be made during the development and areas, fittings, finishes and specifications are subject to change without notice in accordance with the provision of the Sale and Purchase Agreement. The furniture, pools and landscaping depicted within the Villas and Plots are not included with any sale and the positioning of furniture should not be taken to indicate the final positions of power points, TV connections and the like. Prospective purchasers must rely on their own enquiries. Bulkheads necessary for services and structure are not depicted.



4 Bedroom Villa Golf - 4SB



Ground Floor



First Floor

Gross Sellable Area

Total 446 m²

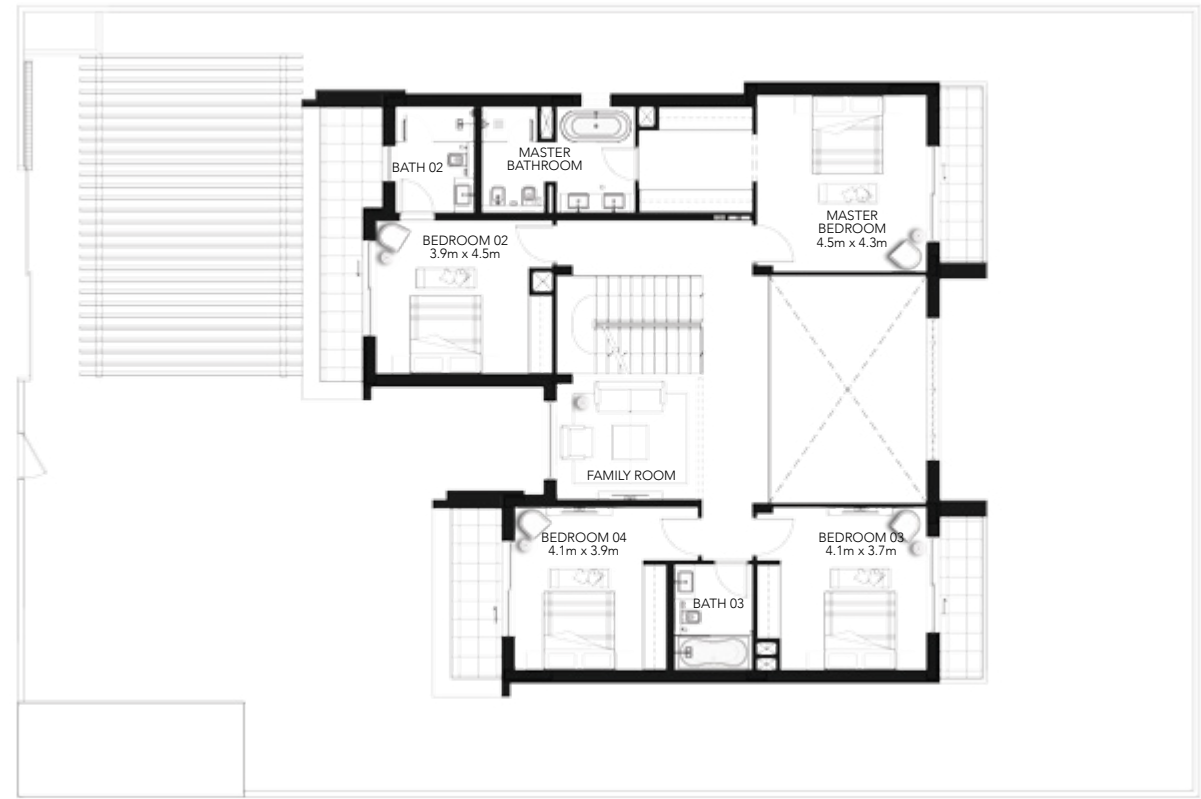
DISCLAIMER: Note that this floorplan was produced prior to the completion of construction and is indicative only and not to scale. Changes may be made during the development and areas, fittings, finishes and specifications are subject to change without notice in accordance with the provision of the Sale and Purchase Agreement. The furniture, pools and landscaping depicted within the Villas and Plots are not included with any sale and the positioning of furniture should not be taken to indicate the final positions of power points, TV connections and the like. Prospective purchasers must rely on their own enquiries. Bulkheads necessary for services and structure are not depicted.



4 Bedroom Villa Garden - 4G



Ground Floor



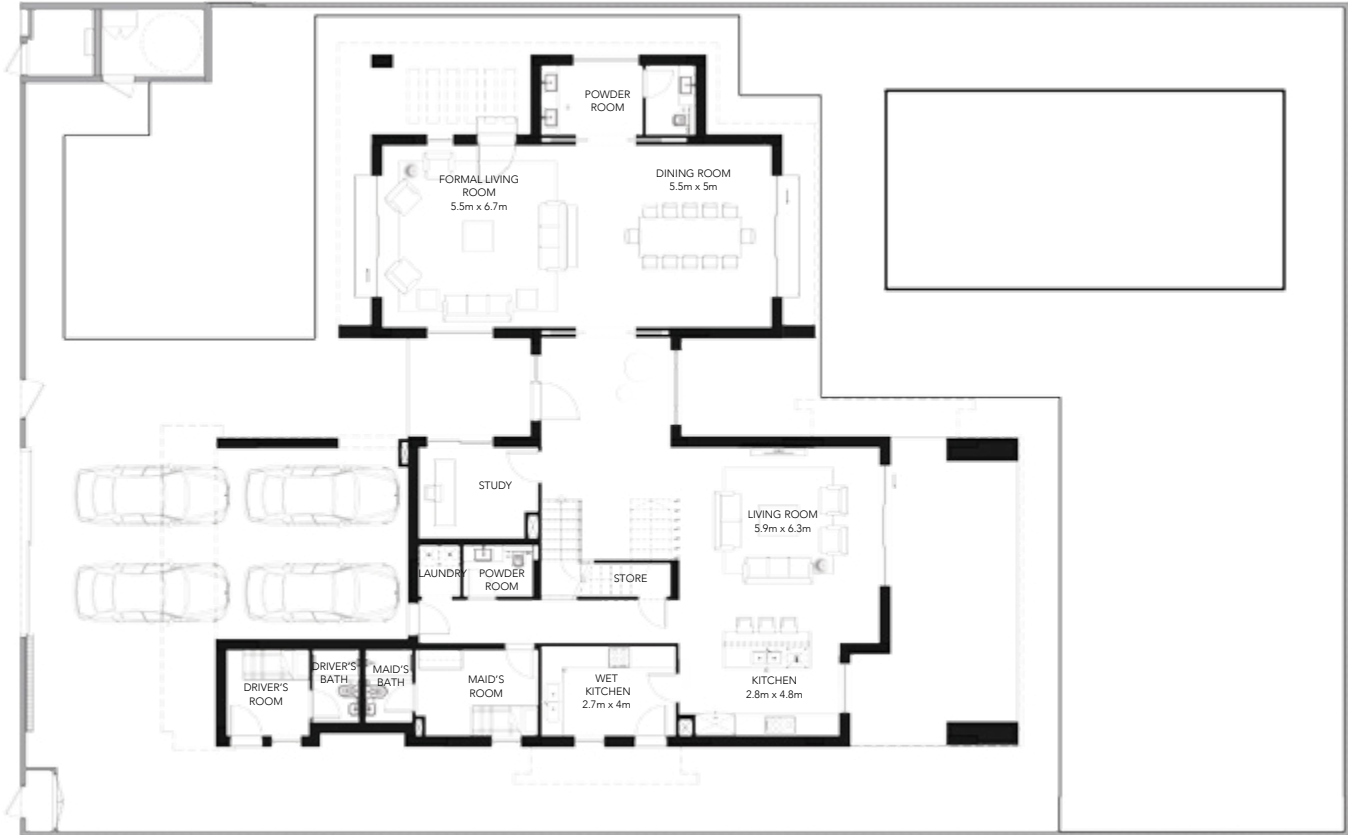
First Floor

Gross Sellable Area

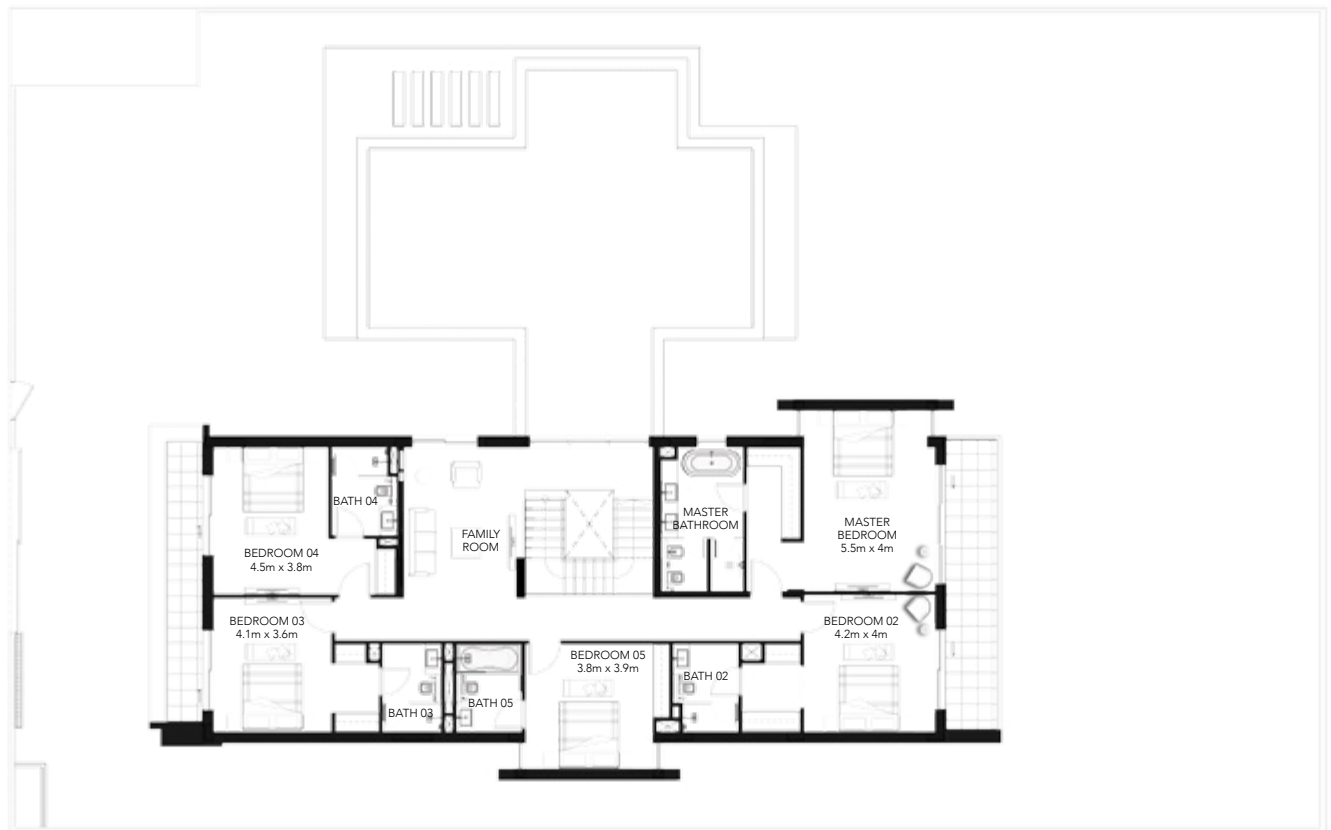
Total 426 m²

DISCLAIMER: Note that this floorplan was produced prior to the completion of construction and is indicative only and not to scale. Changes may be made during the development and areas, fittings, finishes and specifications are subject to change without notice in accordance with the provision of the Sale and Purchase Agreement. The furniture, pools and landscaping depicted within the Villas and Plots are not included with any sale and the positioning of furniture should not be taken to indicate the final positions of power points, TV connections and the like. Prospective purchasers must rely on their own enquiries. Bulkheads necessary for services and structure are not depicted.

5 Bedroom Villa Golf - 5F



Ground Floor



First Floor

Gross Sellable Area
Total **570 m²**

DISCLAIMER: Note that this floorplan was produced prior to the completion of construction and is indicative only and not to scale. Changes may be made during the development and areas, fittings, finishes and specifications are subject to change without notice in accordance with the provision of the Sale and Purchase Agreement. The furniture, pools and landscaping depicted within the Villas and Plots are not included with any sale and the positioning of furniture should not be taken to indicate the final positions of power points, TV connections and the like. Prospective purchasers must rely on their own enquiries. Bulkheads necessary for services and structure are not depicted.



6 Bedroom Villa Golf - 6F



Ground Floor



First Floor

Gross Sellable Area
Total **663 m²**

DISCLAIMER: Note that this floorplan was produced prior to the completion of construction and is indicative only and not to scale. Changes may be made during the development and areas, fittings, finishes and specifications are subject to change without notice in accordance with the provision of the Sale and Purchase Agreement. The furniture, pools and landscaping depicted within the Villas and Plots are not included with any sale and the positioning of furniture should not be taken to indicate the final positions of power points, TV connections and the like. Prospective purchasers must rely on their own enquiries. Bulkheads necessary for services and structure are not depicted.





800 ALDAR
ALDAR.COM