



MAJESTINE

LUXURY SERVICED APARTMENTS  
BUSINESS BAY







# WORLD WONDERS

THE WORLD'S LARGEST MALL; its tallest tower; the highest dancing fountain – inspired urban concepts that make the world sit up and take notice. You couldn't wish for a more iconic neighbourhood. Look around and everything is spectacular.



# A REGAL LIFE

DAMAC MAJESTINE sits at the heart of Business Bay. Offering a grand lifestyle combining the fine comforts of home and the luxury of serviced living, each suite brings you a rare experience, one that befits your stature, perfectly.

- » Deluxe rooms and one, two and three bedroom suites
- » Elegant lobby
- » Luxurious swimming pool for adults with children's pool
- » State-of-the-art gymnasium
- » Steam rooms and sauna
- » Children's play area
- » Beautiful landscaped gardens





# WHERE GLAMOUR RESIDES

EXCLUSIVE TO YOUR NEEDS. Choose from furnished and serviced deluxe rooms, to one, two and three bedroom suites. Enjoy round-the-clock concierge service, plus a host of top amenities without ever leaving the building.

# EVERYTHING YOU NEED

Disclaimer: All pictures, plans, layouts, information, data and details included in this brochure are indicative only and may change at any time up to the final 'as built' status in accordance with final designs of the project, regulatory approvals and planning permissions.

COME HOME to your luxurious suite, tastefully appointed interiors, a fitted kitchen, spacious bathrooms and more. It's the best of all worlds within your suite. Every element is designed to make you feel at home in luxury.



# HOME SUITE HOME

THOUGHTFULLY ALLOCATED SPACES and expertly designed interiors detail every square inch. At DAMAC Majestine, there are quality finishes, premium fittings and splendid furnishings.

Disclaimer: All pictures, plans, layouts, information, data and details included in this brochure are indicative only and may change at any time up to the final 'as built' status in accordance with final designs of the project, regulatory approvals and planning permissions.

# WELLBEING ASSURED

Disclaimer: All pictures, plans, layouts, information, data and details included in this brochure are indicative only and may change at any time up to the final 'as built' status in accordance with final designs of the project, regulatory approvals and planning permissions.

ENHANCE YOUR WELLBEING by exercising at the state-of-the-art gymnasium, with all of the latest premium fitness equipment. Then reward yourself with a session of relaxation in the plush steam rooms and sauna.



WHEN THE DAY IS DONE, why not retreat to the comforts of the temperature-controlled swimming pool. Go for a swim and enjoy a little downtime in the calming waters – there's no better way to let go of everyday stress.

# REFRESHING TIMES







# FLOOR PLANS

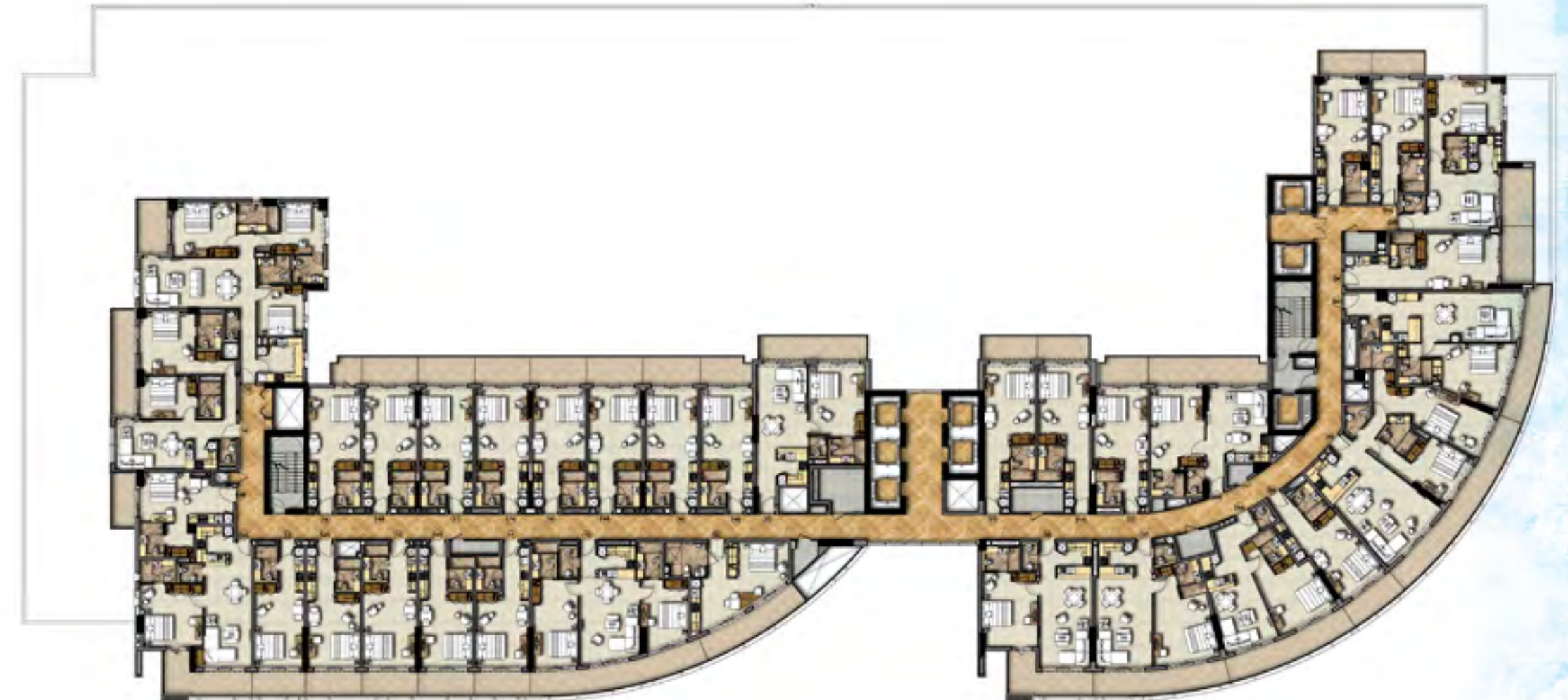


TYPICAL FLOOR PLAN  
Level 4 (Amenities)



Disclaimer: All pictures, plans, layouts, information, data and details included in this brochure are indicative only and may change at any time up to the final 'as built' status in accordance with final designs of the project, regulatory approvals and planning permissions.

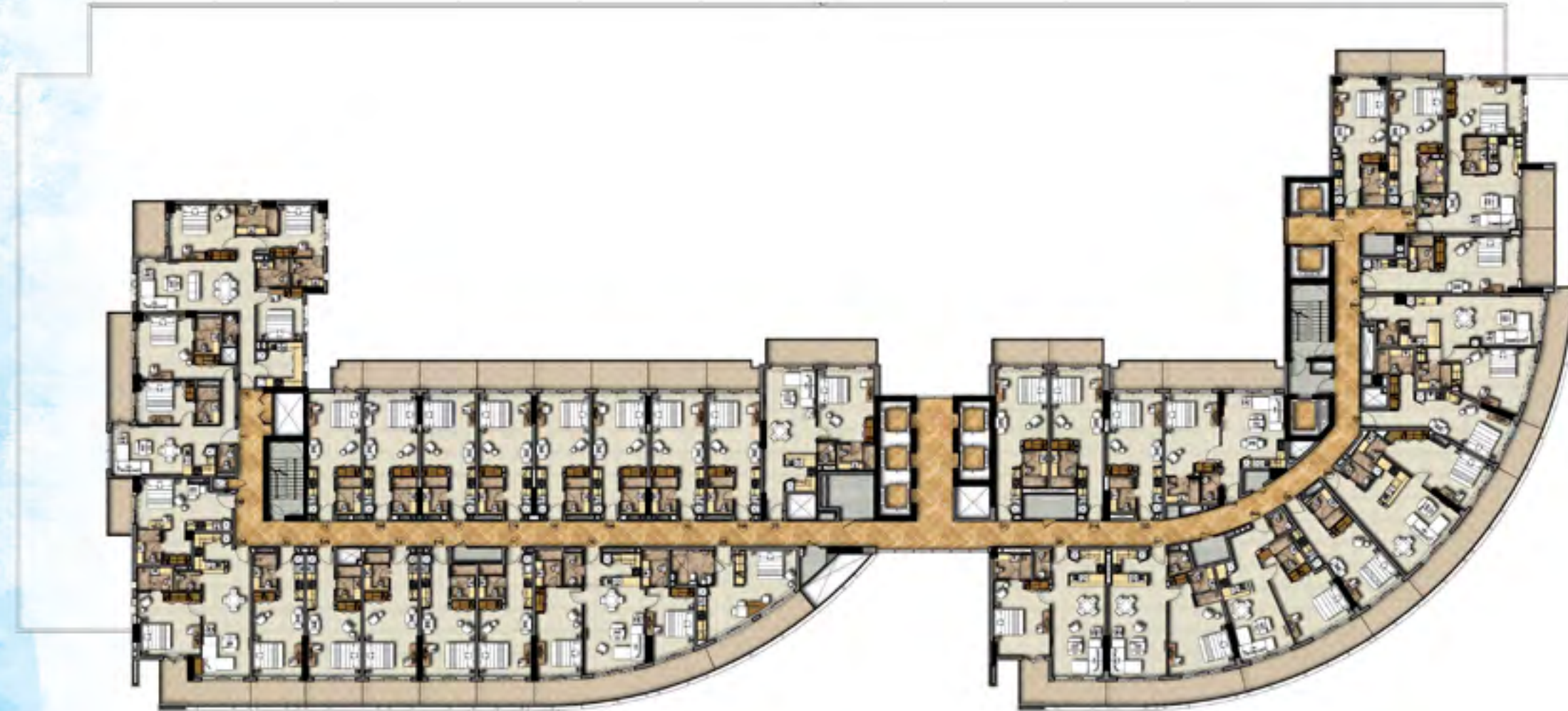
TYPICAL FLOOR PLAN  
Level 5



Disclaimer: All pictures, plans, layouts, information, data and details included in this brochure are indicative only and may change at any time up to the final 'as built' status in accordance with final designs of the project, regulatory approvals and planning permissions.



TYPICAL FLOOR PLAN  
Level 6



Disclaimer: All pictures, plans, layouts, information, data and details included in this brochure are indicative only and may change at any time up to the final 'as built' status in accordance with final designs of the project, regulatory approvals and planning permissions.

TYPICAL FLOOR PLAN  
Level 7



Disclaimer: All pictures, plans, layouts, information, data and details included in this brochure are indicative only and may change at any time up to the final 'as built' status in accordance with final designs of the project, regulatory approvals and planning permissions.



TYPICAL FLOOR PLAN  
Level 8



Disclaimer: All pictures, plans, layouts, information, data and details included in this brochure are indicative only and may change at any time up to the final 'as built' status in accordance with final designs of the project, regulatory approvals and planning permissions.

TYPICAL FLOOR PLAN  
Level 9



Disclaimer: All pictures, plans, layouts, information, data and details included in this brochure are indicative only and may change at any time up to the final 'as built' status in accordance with final designs of the project, regulatory approvals and planning permissions.



TYPICAL FLOOR PLAN  
Level 10



Disclaimer: All pictures, plans, layouts, information, data and details included in this brochure are indicative only and may change at any time up to the final 'as built' status in accordance with final designs of the project, regulatory approvals and planning permissions.

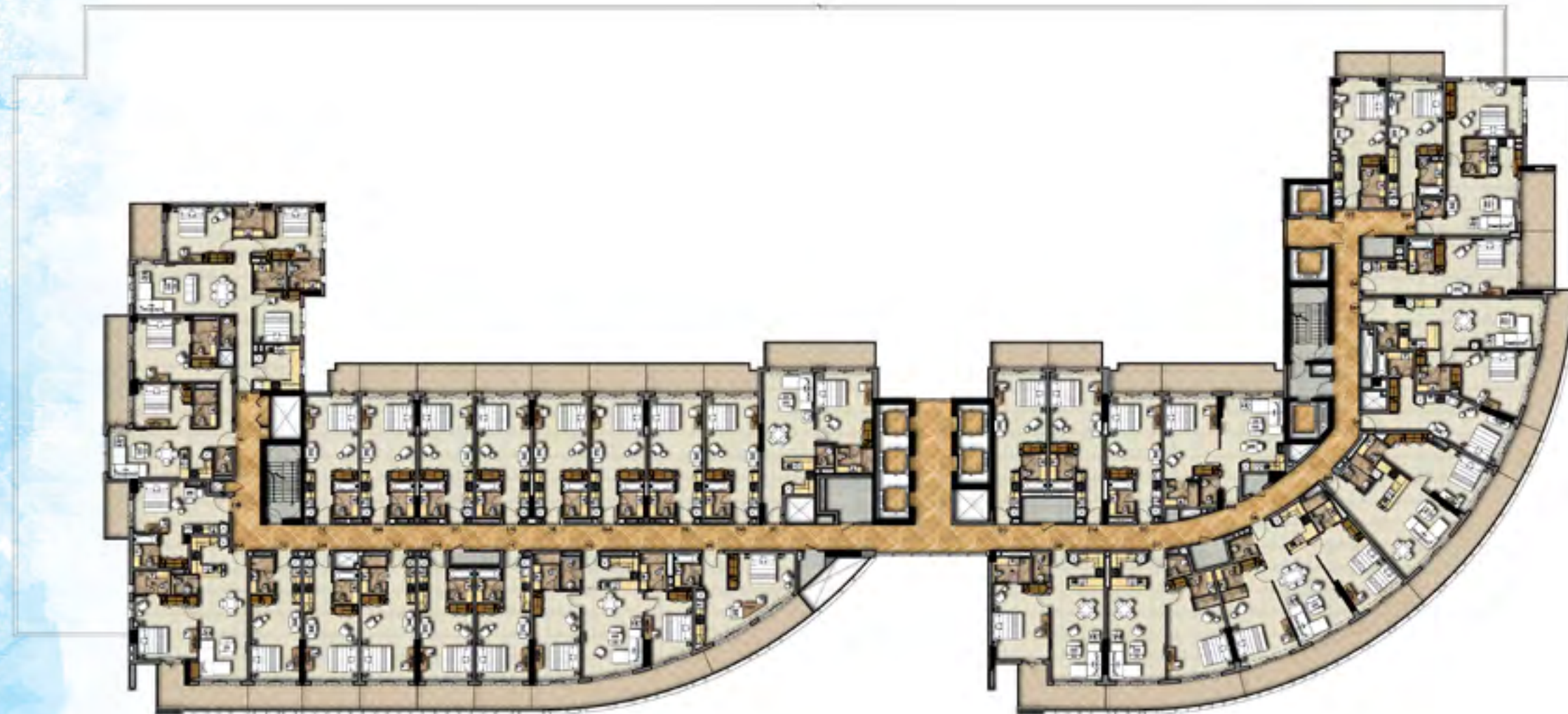
TYPICAL FLOOR PLAN  
Level 11



Disclaimer: All pictures, plans, layouts, information, data and details included in this brochure are indicative only and may change at any time up to the final 'as built' status in accordance with final designs of the project, regulatory approvals and planning permissions.



TYPICAL FLOOR PLAN  
Level 12



Disclaimer: All pictures, plans, layouts, information, data and details included in this brochure are indicative only and may change at any time up to the final 'as built' status in accordance with final designs of the project, regulatory approvals and planning permissions.

TYPICAL FLOOR PLAN  
Level 13



Disclaimer: All pictures, plans, layouts, information, data and details included in this brochure are indicative only and may change at any time up to the final 'as built' status in accordance with final designs of the project, regulatory approvals and planning permissions.

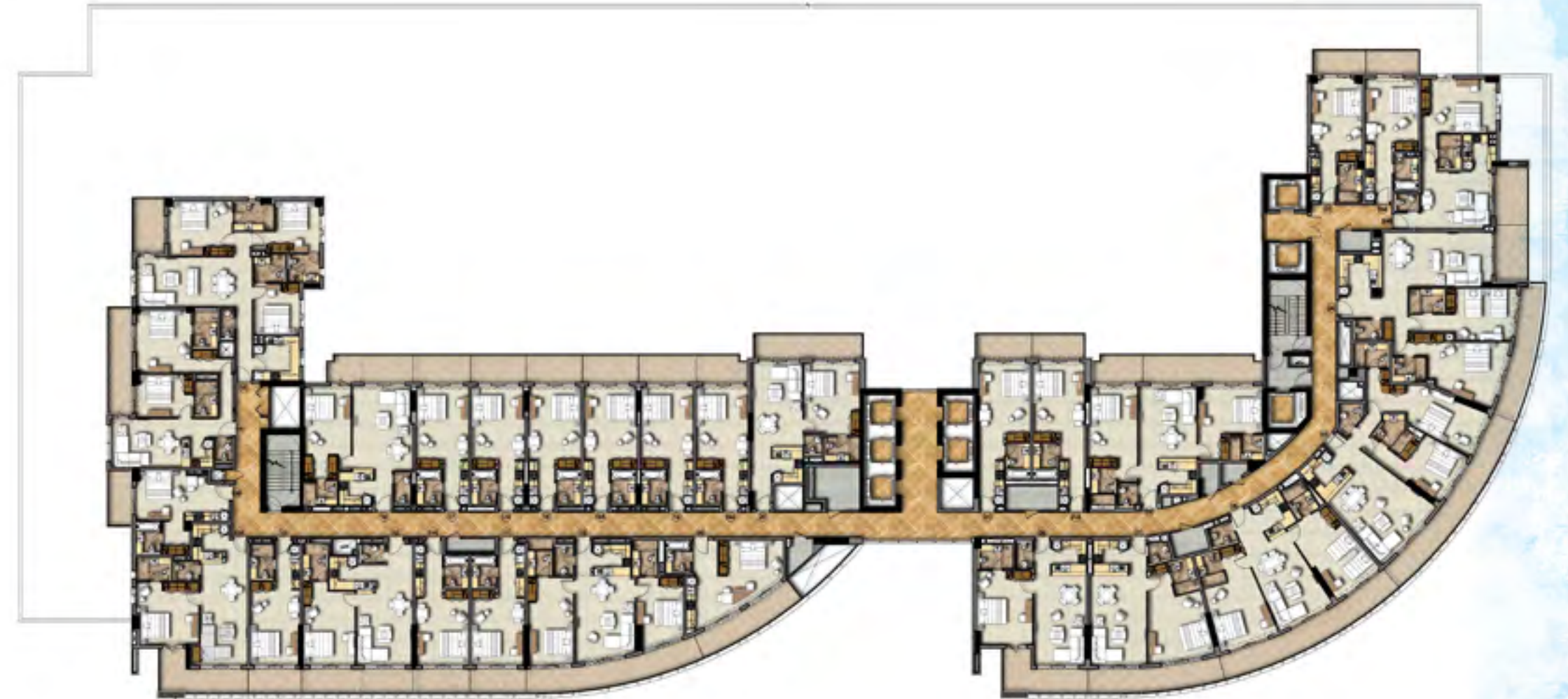


TYPICAL FLOOR PLAN  
Level 14



Disclaimer: All pictures, plans, layouts, information, data and details included in this brochure are indicative only and may change at any time up to the final 'as built' status in accordance with final designs of the project, regulatory approvals and planning permissions.

TYPICAL FLOOR PLAN  
Level 15



Disclaimer: All pictures, plans, layouts, information, data and details included in this brochure are indicative only and may change at any time up to the final 'as built' status in accordance with final designs of the project, regulatory approvals and planning permissions.

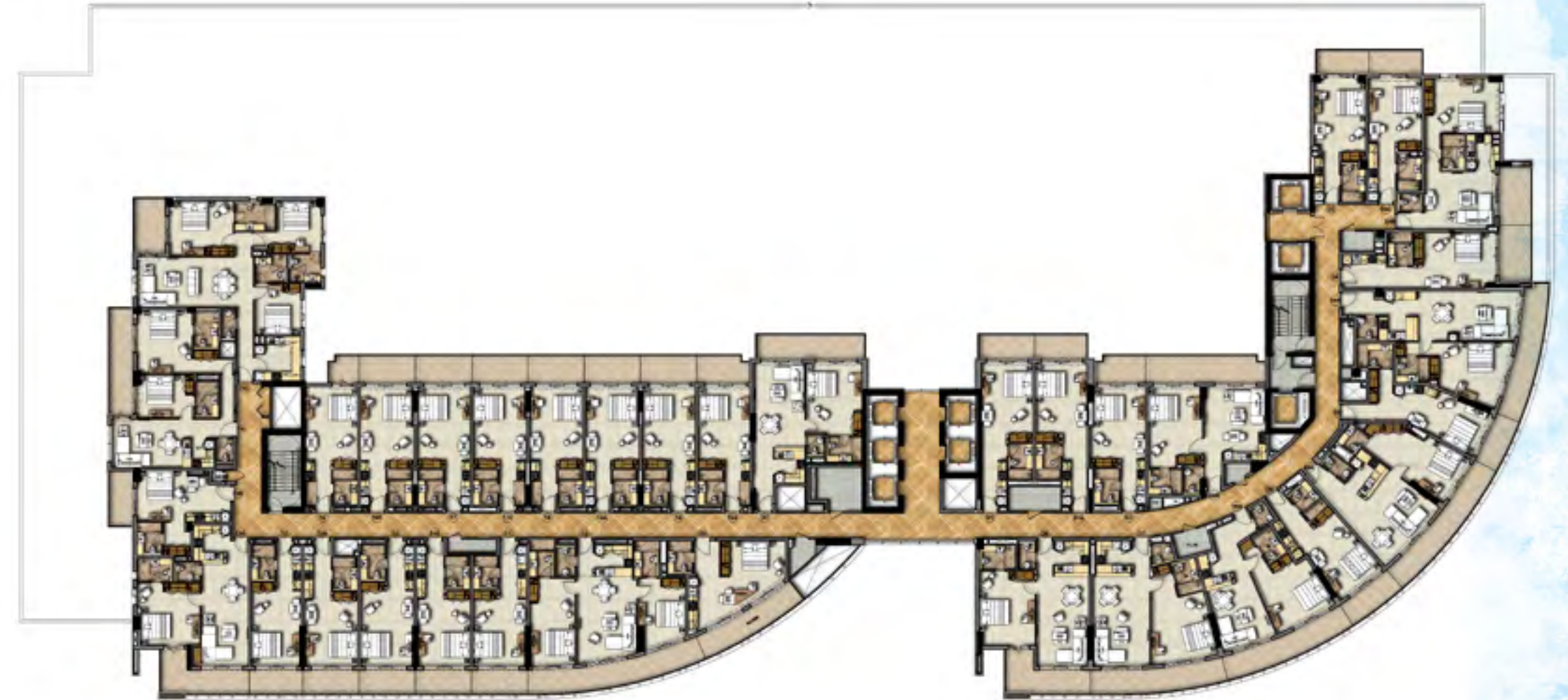


TYPICAL FLOOR PLAN  
Level 16



Disclaimer: All pictures, plans, layouts, information, data and details included in this brochure are indicative only and may change at any time up to the final 'as built' status in accordance with final designs of the project, regulatory approvals and planning permissions.

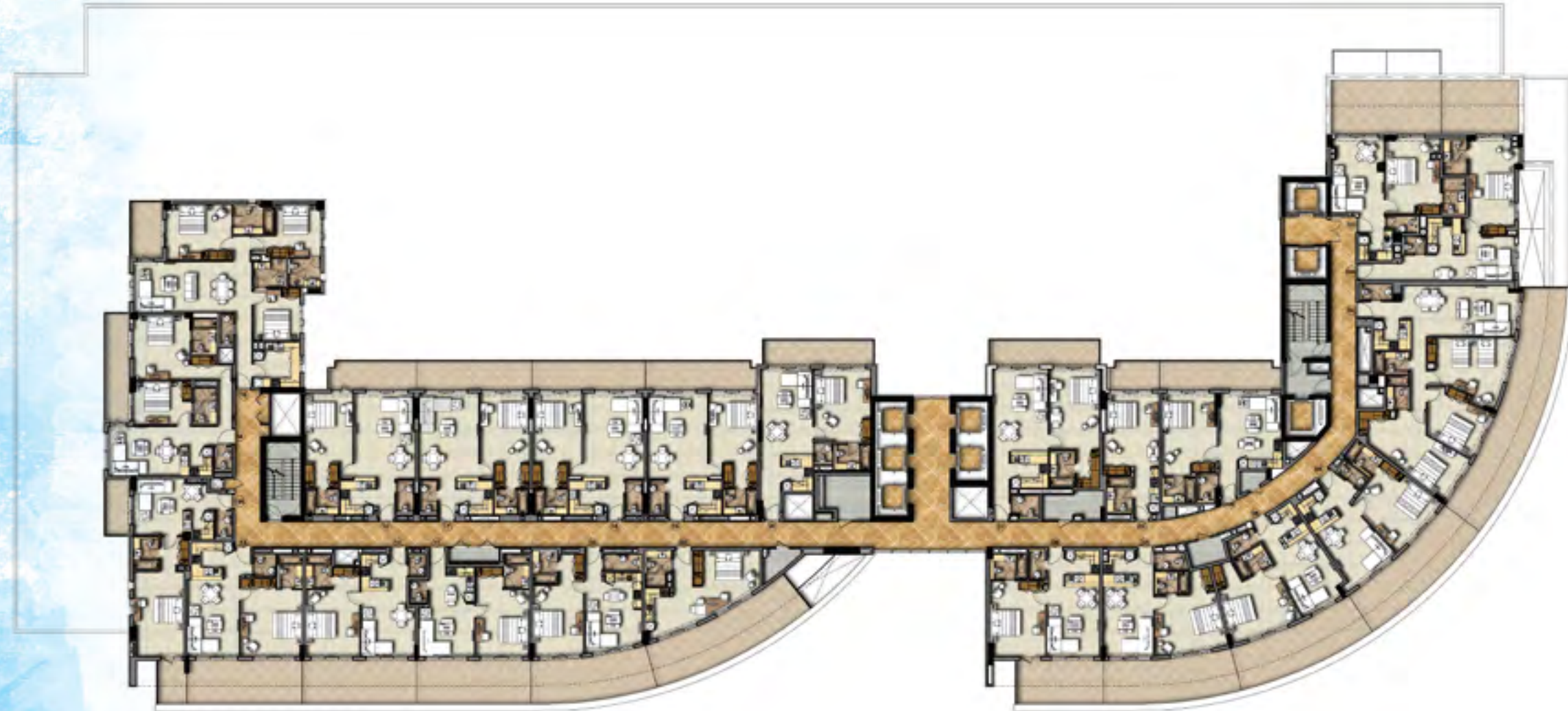
TYPICAL FLOOR PLAN  
Level 17



Disclaimer: All pictures, plans, layouts, information, data and details included in this brochure are indicative only and may change at any time up to the final 'as built' status in accordance with final designs of the project, regulatory approvals and planning permissions.



TYPICAL FLOOR PLAN  
Level 18



Disclaimer: All pictures, plans, layouts, information, data and details included in this brochure are indicative only and may change at any time up to the final 'as built' status in accordance with final designs of the project, regulatory approvals and planning permissions.

TYPICAL FLOOR PLAN  
Level 19



Disclaimer: All pictures, plans, layouts, information, data and details included in this brochure are indicative only and may change at any time up to the final 'as built' status in accordance with final designs of the project, regulatory approvals and planning permissions.



# LUXURY BY APPOINTMENT



CONTACT US AT ANY OF OUR OFFICES OR VISIT [DAMACPROPERTIES.COM](http://DAMACPROPERTIES.COM)

DAMAC Properties has been at the forefront of the Middle East's luxury real estate market since 2002, delivering award-winning residential, commercial and leisure properties across the region, including the UAE, Saudi Arabia, Qatar, Jordan, Lebanon, Oman and the United Kingdom. Since then, the Company has delivered over 20,880 homes, with a development portfolio of more than 44,000 at various stages of planning and progress. This includes 13,000 hotel rooms, serviced hotel apartments and hotel villas, managed by its wholly-owned DAMAC Hotels & Resorts.\*

Joining forces with some of the world's most eminent fashion and lifestyle brands, DAMAC has brought new and exciting living concepts to the market in collaborations that include a Tiger Woods Design golf course managed by The Trump Organization, and luxury homes in association with Versace, Fendi, Just Cavalli, Bugatti, and Paramount Hotels & Resorts. With a consistent vision, and strong momentum, DAMAC Properties is building the next generation of Middle Eastern luxury living.

DAMAC places a great emphasis on philanthropy and corporate social responsibility. As such, the Hussain Sajwani – DAMAC Foundation, a joint initiative between DAMAC Group and its Chairman Hussain Sajwani, is supporting the One Million Arab Coders Initiative. The programme was launched by Vice President and Prime Minister of the UAE, and Ruler of Dubai, His Highness Sheikh Mohammed bin Rashid Al Maktoum, and is focused on creating an empowered society through learning and skills development.

\*As of 31st March 2018.

From 1st January 2018, commercial properties (including hotel rooms, hotel apartments, retail and office spaces, plus parking and storage areas if sold separately) are subject to Value Added Tax (VAT) at a rate of 5%. To date, residential property remains free of VAT.

All project information is correct as at the time of printing but may be subject to change without notice.

## UNITED ARAB EMIRATES

Tel: +971 4 301 9999  
PO Box 2195, Dubai, UAE

### Dubai

Ocean Heights  
Al Sufouh Road  
Tel: +971 4 512 2600  
Fax: +971 4 454 2891  
E-mail: [dubai@damacgroup.com](mailto:dubai@damacgroup.com)

### Park Towers

Dubai International Financial Centre  
Tel: +971 4 376 3600  
Fax: +971 4 373 1490  
E-mail: [dubai@damacgroup.com](mailto:dubai@damacgroup.com)

### Sheikh Zayed Road Sales Office

Al Manara Building  
2nd Floor, Sheikh Zayed Road  
Landmark: above Bugatti Showroom  
Tel: +971 04 590 5222  
E-mail: [dubai@damacgroup.com](mailto:dubai@damacgroup.com)

### DAMAC Hills Sales Centre 1

Gate 1  
Sheikh Zayed bin Hamdan Al Nahyan Street  
Tel: +971 4 818 3300  
E-mail: [dubai@damacgroup.com](mailto:dubai@damacgroup.com)

### DAMAC Hills Sales Centre 2

Gate 3  
Hessa Street  
Opposite Golf Terrace apts  
Tel: +971 4 245 8555  
E-mail: [dubai@damacgroup.com](mailto:dubai@damacgroup.com)

## LEBANON

DAMAC Properties Lebanon SAL  
Unit 1801, 18th Floor  
DAMAC Tower, Omar Daouk Street  
Mina El Hosn, Beirut Central District  
Tel: +961 81 647 200  
E-mail: [beirut@damacgroup.com](mailto:beirut@damacgroup.com)

## KUWAIT

Al Bawader Real Estate Broker WLL  
Office 42A, 12th Floor  
Panasonic Tower, Building 6, Block 14  
Al Qibla Street, Kuwait City  
Tel: +965 2249 8727  
Fax: + 965 2245 6766  
E-mail: [kuwait@damacgroup.com](mailto:kuwait@damacgroup.com)

## KINGDOM OF SAUDI ARABIA

### Riyadh

14th Floor, Al Anoud Building  
King Fahd Road  
Tel: +966 11 293 2883  
Fax: +966 11 279 2462  
E-mail: [ksa@damacgroup.com](mailto:ksa@damacgroup.com)

### Jeddah

Al Jawharah Tower  
Next to Rosewood Jeddah Hotel  
Said Ibn Amir, Ash Shati  
Tel: +966 12 233 0210  
Fax: +966 12 284 5446  
E-mail: [ksa@damacgroup.com](mailto:ksa@damacgroup.com)

## QATAR

Building 90, New Solta area  
Ali bin Abi Talib Street,  
Next to Omar bin Al Khattab Health Centre  
PO Box 18223, Doha  
Tel: +974 44 666 986  
Fax: +974 44 554 576  
E-mail: [doha@damacgroup.com](mailto:doha@damacgroup.com)

## JORDAN

Al Istithmar Street  
Abdali Project  
Amman  
Opposite Abdali Mall Gate #1  
Tel: +962 6 510 7000  
Fax: +962 6 565 7896  
E-mail: [amman@damacgroup.com](mailto:amman@damacgroup.com)





# ***DAMAC***

[WWW.DAMACPROPERTIES.COM](http://WWW.DAMACPROPERTIES.COM)