

Harmony



تلال الغاف
Tilal Al Ghaf

The big picture



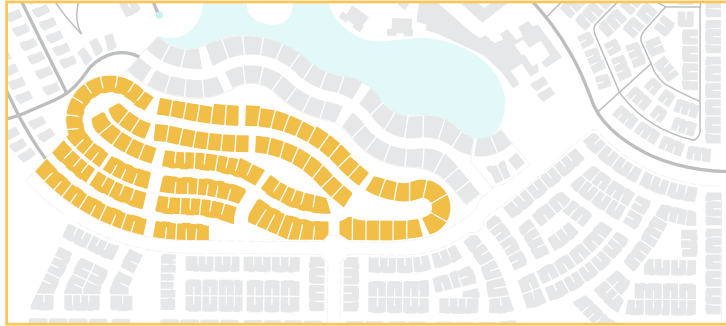
Convenience at your doorstep

The masterplan

- 1 The Hive
- 2 Hive Beach
- 3 Hive Park
- 4 Club Hive
- 5 Lagoon Al Ghaf
- 6 School
- 7 Hotels & Wellness retreat
- 8 Mosques
- 9 Nurseries

Harmony

Harmony is a neighbourhood with the ideal balance of adventure and respite. Harmony residents enjoy an intimate enclave of their own. Picnic areas and highly walkable areas through the neighbourhood make it easy for families to enjoy scenic spaces and leisurely walks. Find the best balance for body and soul within Harmony's natural splendour.



Harmony has a unique character that lifts suburbia to a higher place of balanced living. It is an incredible place to live with various product choices, from single storey bungalows, to expansive three storey family villas, all connected to parkways and trails. The design is driven by the principle of connecting indoor and outdoor spaces to create bright and spacious living experiences.



•Artist impression

Bungalow

5 bedroom










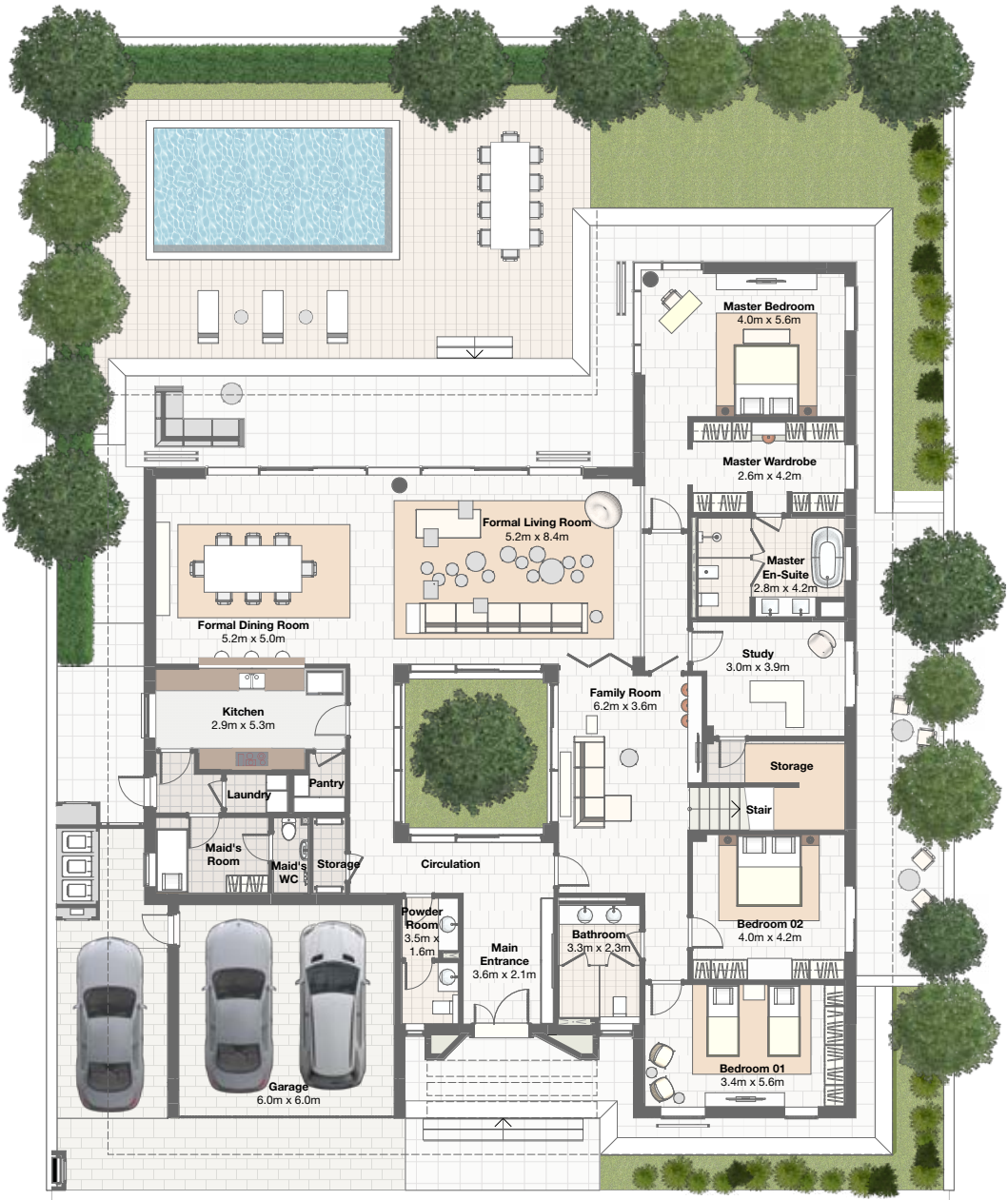


Bungalow

5 bedroom



5Br Bungalow	SQM	SQF
Ground Floor	322.5	3471.6
First Floor	83.7	901.2
Balcony/Terrace	17.1	183.8
Carport	38.3	412.6
Total	461.7	4969.2

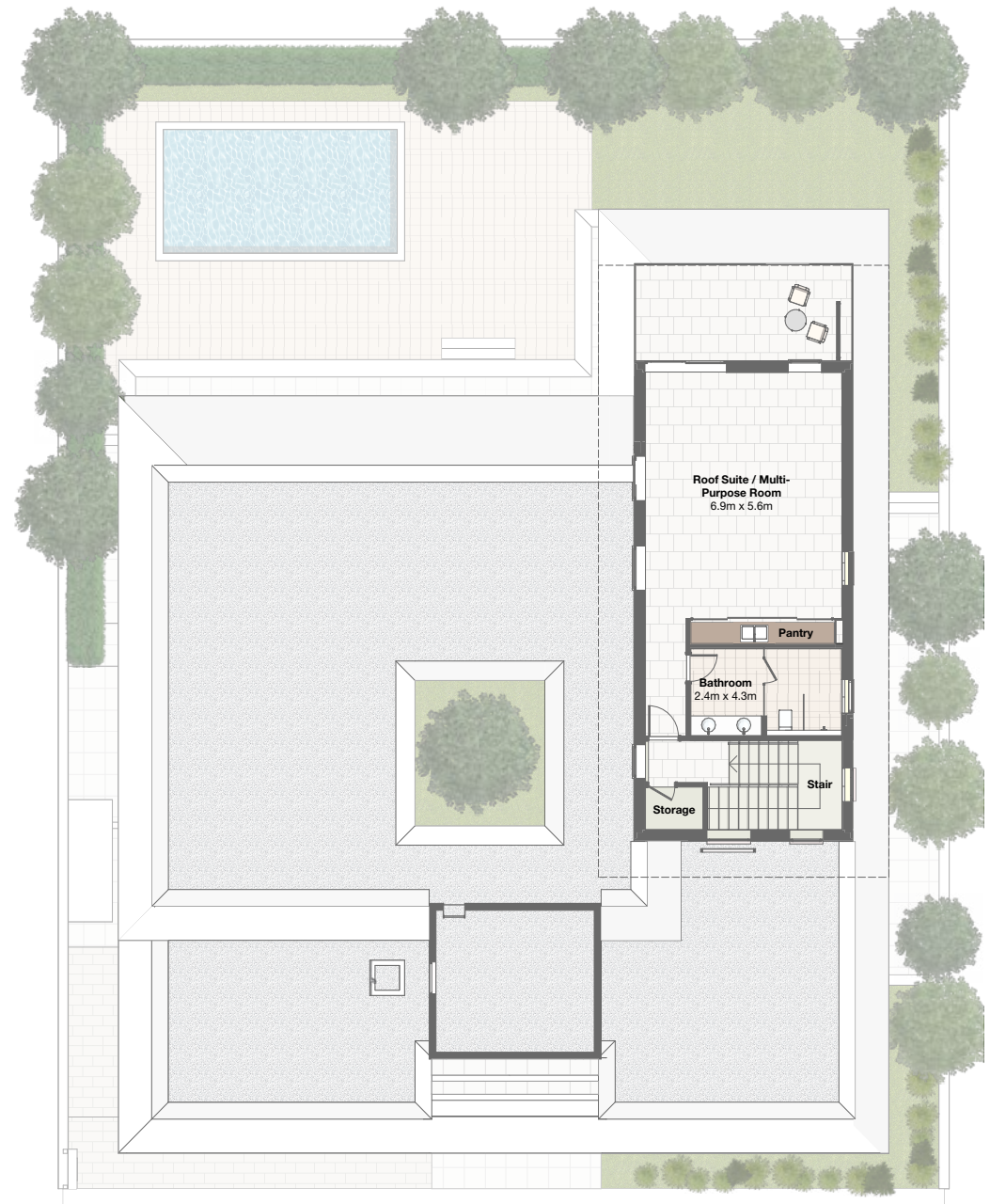


Ground level

The plans, drawings, images, dimensions, areas and all information provided herein are indicative, provided for illustrative purposes only and may be subject to variation without prior notice at the sole discretion of the Developer.

Bungalow

5 bedroom



Roof suite

The plans, drawings, images, dimensions, areas and all information provided herein are indicative, provided for illustrative purposes only and may be subject to variation without prior notice at the sole discretion of the Developer.

Bungalow






4 bedroom

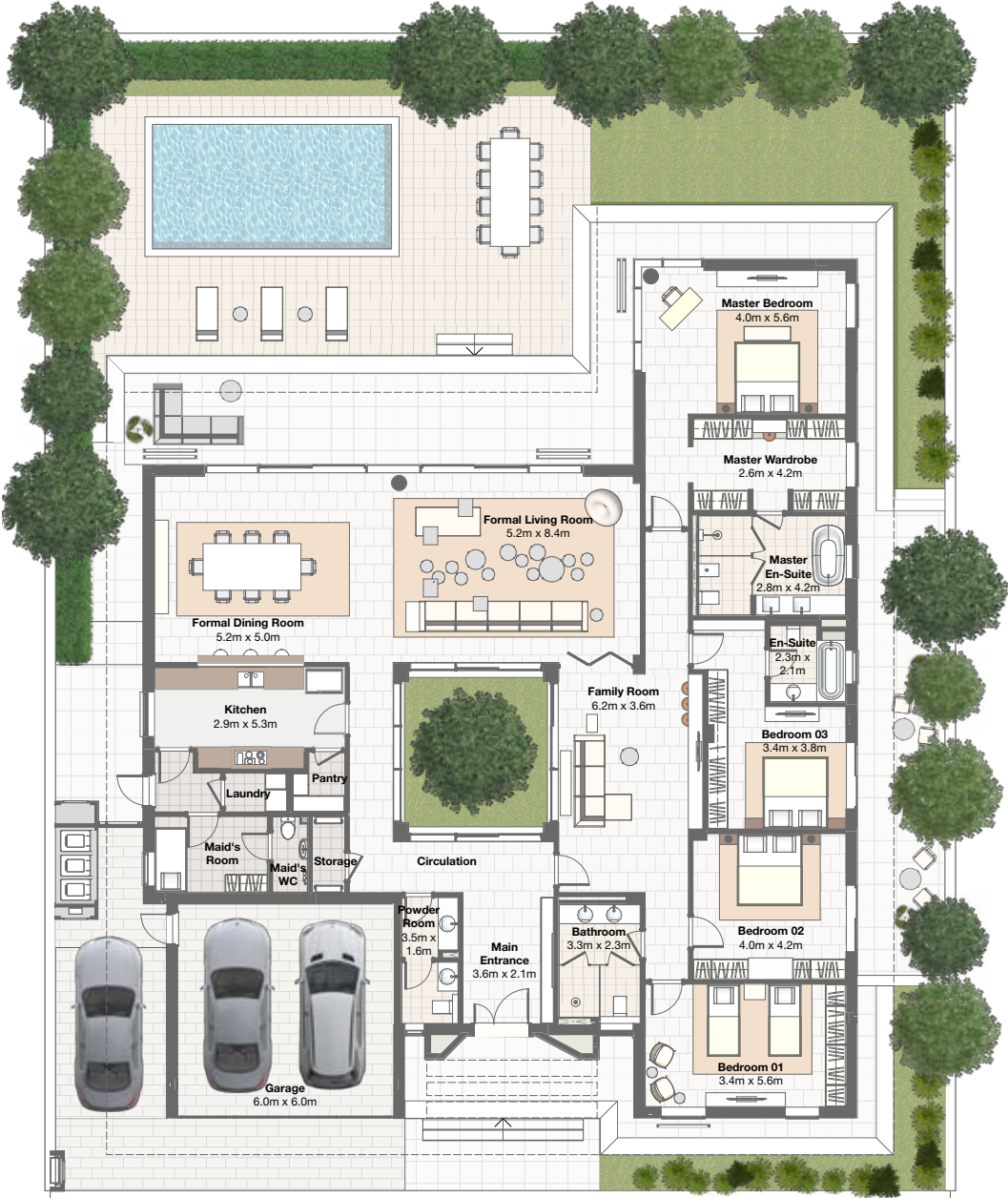




Bungalow

4 bedroom

				
4Br Bungalow	SQM	SQF		
Ground Floor	322.5	3471.6		
First Floor	00	00		
Balcony/Terrace	00	00		
Carport	38.3	412.6		
Total	360.8	3884.2		



Ground level

The plans, drawings, images, dimensions, areas and all information provided herein are indicative, provided for illustrative purposes only and may be subject to variation without prior notice at the sole discretion of the Developer.





•Artist Impression

Family room



•Artist impression

Master bathroom

Luxury villa






6 bedroom





Luxury villa

6 bedroom



6Br Luxury Villa	SQM	SQF
Ground Floor	274.1	2950.5
First Floor	300.0	3228.9
Balcony/Terrace	12.1	129.7
Carport	58.6	631.1
Total	644.8	6940.1



Ground level

The plans, drawings, images, dimensions, areas and all information provided herein are indicative, provided for illustrative purposes only and may be subject to variation without prior notice at the sole discretion of the Developer.

Luxury villa

6 bedroom



First floor

The plans, drawings, images, dimensions, areas and all information provided herein are indicative, provided for illustrative purposes only and may be subject to variation without prior notice at the sole discretion of the Developer.

Luxury villa






5 bedroom





Luxury villa

5 bedroom



5Br Luxury Villa	SQM	SQF
Ground Floor	221.8	2386.9
First Floor	235.6	2536.2
Balcony/Terrace	53.7	578.3
Carport	58.0	623.8
Total	569.1	6125.2

Ground level



The plans, drawings, images, dimensions, areas and all information provided herein are indicative, provided for illustrative purposes only and may be subject to variation without prior notice at the sole discretion of the Developer.

Luxury villa

5 bedroom



First floor

The plans, drawings, images, dimensions, areas and all information provided herein are indicative, provided for illustrative purposes only and may be subject to variation without prior notice at the sole discretion of the Developer.

Luxury villa






4 bedroom





Luxury villa

4 bedroom



4Br Luxury Villa	SQM	SQF
Ground Floor	186.9	2012.0
First Floor	201.1	2164.4
Balcony/Terrace	40.8	438.7
Carport	47.6	511.8
Total	476.3	5127.0



Ground level

The plans, drawings, images, dimensions, areas and all information provided herein are indicative, provided for illustrative purposes only and may be subject to variation without prior notice at the sole discretion of the Developer.

Luxury villa

4 bedroom



First floor

The plans, drawings, images, dimensions, areas and all information provided herein are indicative, provided for illustrative purposes only and may be subject to variation without prior notice at the sole discretion of the Developer.



•Artist impression

Living room - 6Br Luxury villa



•Artist impression

Living room - 4Br Luxury villa



•Artist impression

Dining room - 4Br Luxury villa



•Artist impression

Kitchen - 4Br Luxury villa



*Artist Impression

Family room - 6Br Luxury villa



•Artist impression

Master bedroom - 6Br Luxury villa

About Majid Al Futtaim Communities

Majid Al Futtaim Communities craft human-centric destinations by bridging people, business and culture to create world-class mixed-use developments with unparalleled quality of life at their core.

Our experience allows us to find creative synergies between partners to elevate master planning and design; architecture, public space and urban retail; culture creation and services. These contribute to building civic pride and a sense of belonging for anyone who comes in touch with one of our communities.

Legacy building is our mindset: our communities are designed to deliver long-term value and to continue to grow and evolve in character, culture, complexity and desirability.

In addition to Tilal Al Ghaf, our newly launched flagship community in Dubai, our portfolio includes three live developments spanning 4 million square metres: Al Zahia in Sharjah, UAE, Al Mouj in Muscat, Oman and Waterfront City in Dbayeh, Lebanon.



A pioneering destination in Sharjah, Al Zahia provides an exclusive, sustainable living environment with six themed parks, leisure facilities and retail, connected to City Centre Al Zahia.




Waterfront City
 DBAYEH

This is seaside living at its best. This master-planned community in Dbayeh blends the charm of maritime living with the luxury of leisure, entertainment, hospitality and business attractions.




 muscat مسقط

Spread along a -7kilometre stretch of stunning coastline, Al Mouj Muscat is Oman's premier lifestyle destination with over 6,000 contemporary properties, surrounded by the world's best dining, entertainment and lifestyle offerings.



About Majid Al Futtaim

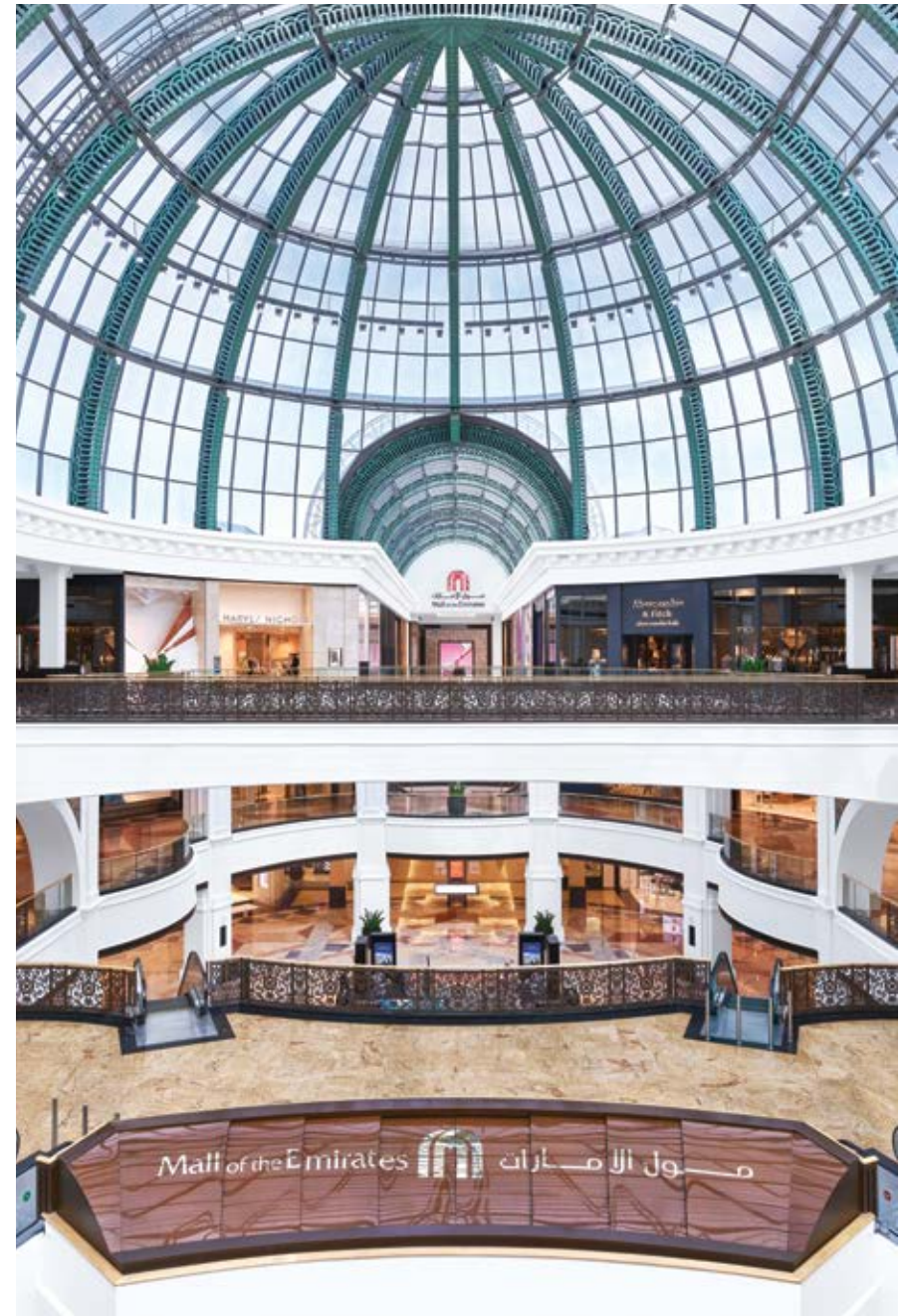
Founded in 1992, Majid Al Futtaim is the leading shopping mall, communities, retail and leisure pioneer across the Middle East, Africa and Asia.

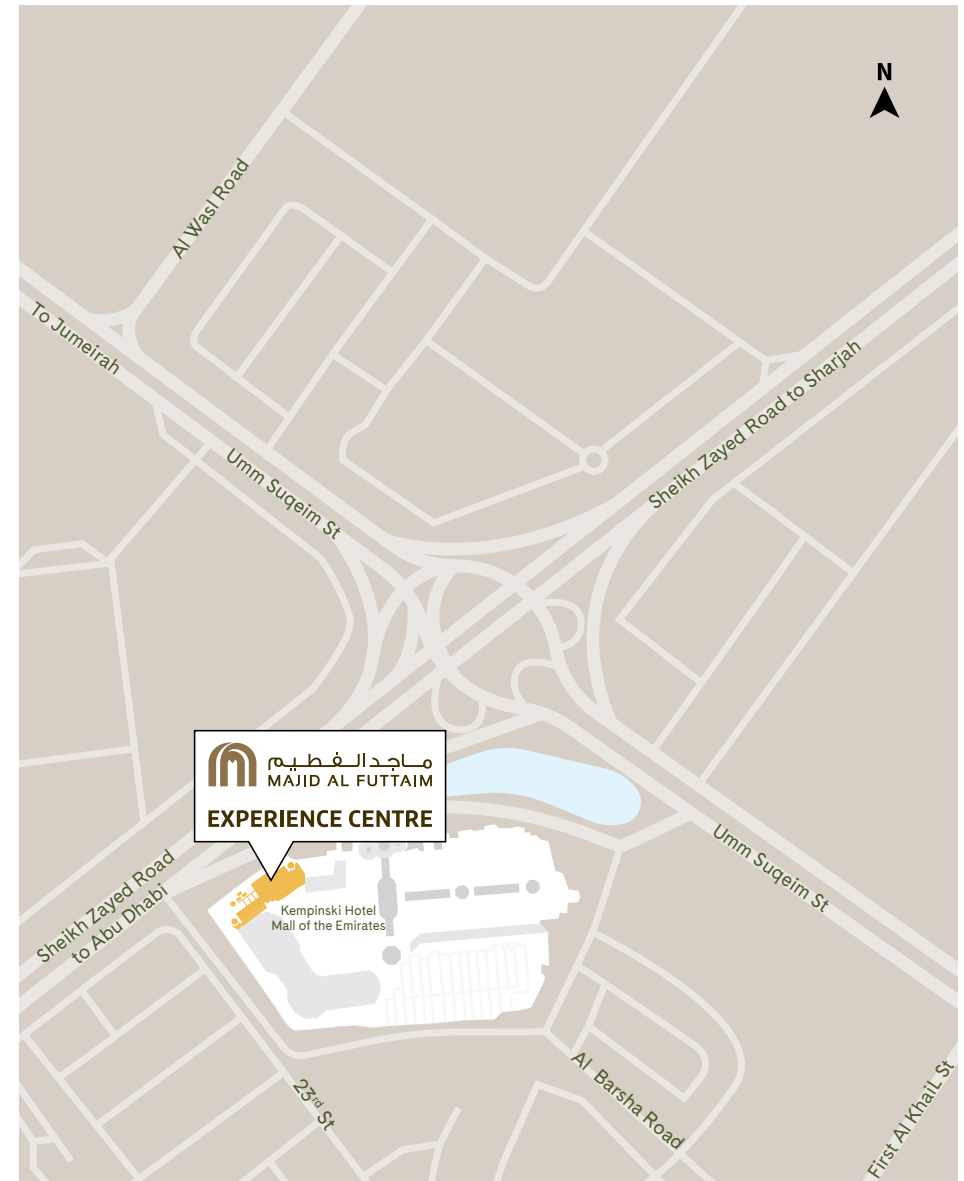
A remarkable business success story, Majid Al Futtaim started from one man's vision to transform the face of shopping, entertainment and leisure to create 'great moments for everyone, every day'. It has since grown into one of the United Arab Emirates' most respected and successful businesses spanning 15 international markets, employing 40,000 people and obtaining the highest credit rating (BBB) among privately-held corporates in the region.

Majid Al Futtaim owns and operates 22 shopping malls, 12 hotels and three mixed-use communities, with further developments underway in the region. The shopping malls portfolio includes Mall of the Emirates, Mall of Egypt, City Centre malls, My City Centre neighbourhood centres, and four community malls which are in joint venture with the Government of Sharjah. The Company is the exclusive franchisee for Carrefour in 38 markets

across the Middle East, Africa and Asia, and operates a portfolio of more than 230 outlets in 14 countries.

Majid Al Futtaim operates 300 VOX Cinema screens and 32 Magic Planet family entertainment centres across the region, in addition to iconic leisure and entertainment facilities such as Ski Dubai, Orbi Dubai and Ski Egypt, among others. The Company is parent to the consumer finance company 'Najm', a fashion retail business representing international brands such as Abercrombie & Fitch, AllSaints, lululemon athletica, Crate & Barrel and Maisons du Monde; and a healthcare business that operates City Centre Clinics. In addition, Majid Al Futtaim operates Enova, a facility and energy management company, through a joint venture operation with Veolia, a global leader in optimised environment resource management. The Company also owns the rights to The LEGO Store and American Girl in the Middle East and operates in the food and beverage industry through a partnership with Gourmet Gulf.





Majid Al Futtaim Experience Centre
Kempinski Hotel Mall of the Emirates
#MeaningfulRoots

800 GHAF
4423
tilalalghaf.com

A Majid Al Futtaim Community

