

Rising gracefully from the
desert - an extraordinary
union of art, engineering and
meticulous craftsmanship.
Arguably the most prestigious
address on the globe. Burj
Khalifa is a living wonder
and the tallest building in
the world.

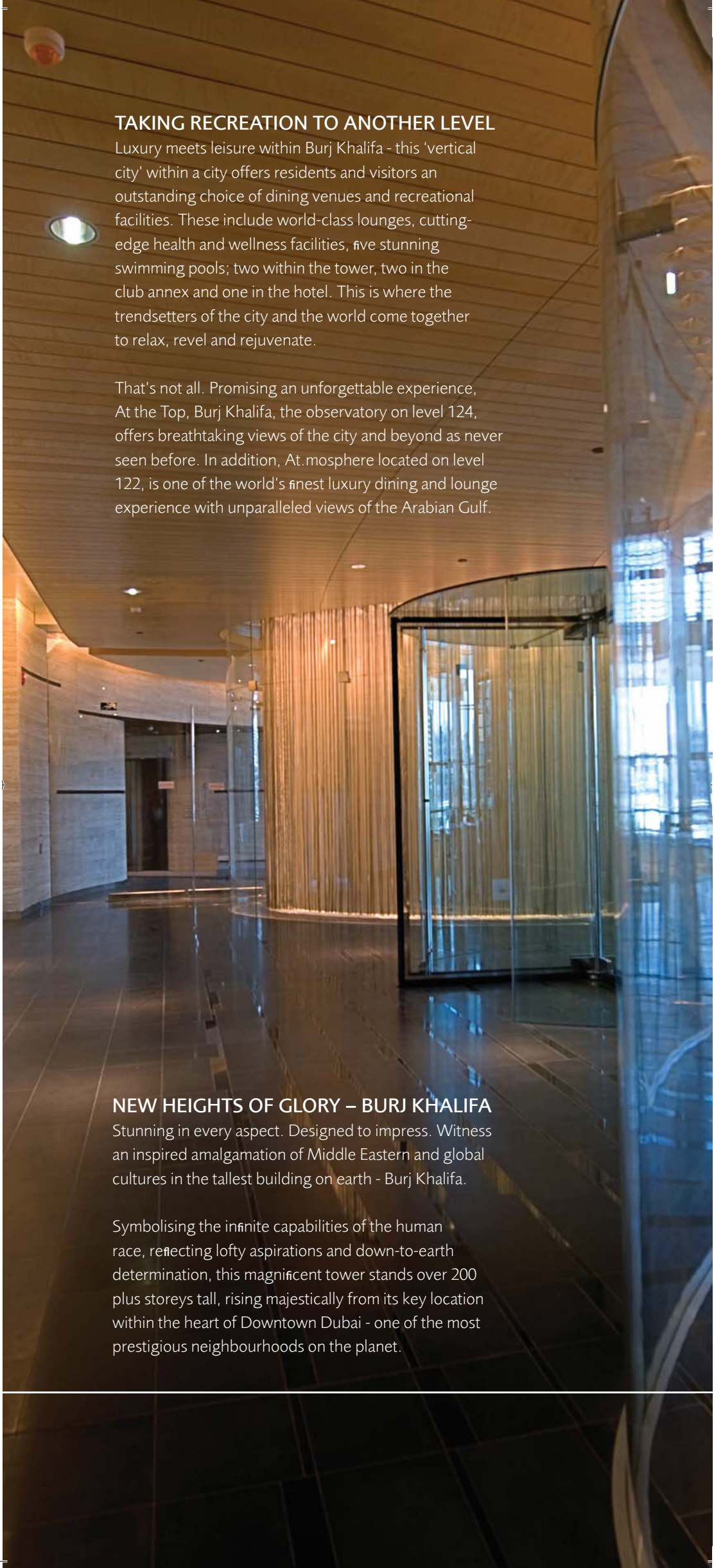




LIVE, WORK, PLAY

Blending refined aesthetic beauty with functional excellence and outstanding utilisation of space, Burj Khalifa is where over 11,500 people will reside, work and enjoy their hours of leisure.

Labelled the region's most definitive lifestyle destination, Burj Khalifa lives up to its distinguished reputation in every way. Those who appreciate the finer things in life may choose from 900 premium residential units, while exceptional office spaces spanning 37 dedicated floors, offer superlative work experiences for professionals. Exquisite in design and undeniably glamorous, the world's first Armani Hotel and Armani Residences have also opened their doors within Burj Khalifa.



TAKING RECREATION TO ANOTHER LEVEL

Luxury meets leisure within Burj Khalifa - this 'vertical city' within a city offers residents and visitors an outstanding choice of dining venues and recreational facilities. These include world-class lounges, cutting-edge health and wellness facilities, five stunning swimming pools; two within the tower, two in the club annex and one in the hotel. This is where the trendsetters of the city and the world come together to relax, revel and rejuvenate.

That's not all. Promising an unforgettable experience, At the Top, Burj Khalifa, the observatory on level 124, offers breathtaking views of the city and beyond as never seen before. In addition, At.mosphere located on level 122, is one of the world's finest luxury dining and lounge experience with unparalleled views of the Arabian Gulf.

NEW HEIGHTS OF GLORY – BURJ KHALIFA

Stunning in every aspect. Designed to impress. Witness an inspired amalgamation of Middle Eastern and global cultures in the tallest building on earth - Burj Khalifa.

Symbolising the infinite capabilities of the human race, reflecting lofty aspirations and down-to-earth determination, this magnificent tower stands over 200 plus storeys tall, rising majestically from its key location within the heart of Downtown Dubai - one of the most prestigious neighbourhoods on the planet.

SPECTACULAR INTERIORS

Incorporating subtle and contemporary interpretations of both local and global culture, the interiors of Burj Khalifa were designed as an aesthetic confluence of the best in the world and the region. From the heritage of pearl trade to the timeless desert sands and the far reaches of the galaxy to ancient manuscripts, the colour and material palette of Burj Khalifa draws a wealth of inspiration from a range of interesting elements.

Throughout the tower, stunning silver travertine floors flow towards Venetian stucco walls and gorgeous handmade rugs merge into polished stone floors. The layout of common areas resembles Arabic writing, a distinctive, elegantly flowing cursive. An intricate inter-weaving of steel, Brazilian Santos rosewood and glass finishes and the finest detailing, all work together to reflect shelter, comfort and the highest level of luxury.

STRIKING MASTERPIECES

Further enhancing the sophisticated design, over 1,000 pieces of art by prominent artists from the Middle East and around the world adorn the interiors of Burj Khalifa and the surrounding Mohammed Bin Rashid Boulevard. Many of these masterpieces were specially commissioned by Emaar, as a tribute to the spirit of global harmony.

BREAKING WORLD RECORDS

Burj Khalifa is home to many world firsts. Setting an array of architectural records, this marvellous landmark was developed by Dubai-based Emaar Properties PJSC.

Burj Khalifa

- Spans a total built-up area of 5.67 million square feet
- Is the tallest building, tallest man-made structure and tallest free-standing structure in the world
- Has the most number of storeys and highest occupied floor in the world
- Has the highest outdoor observation deck in the world
- Holds the world record for vertical concrete pumping
- Has the tallest service elevator in the world
- Holds the record for the highest installation of an aluminium and glass façade
- Has the world's highest swimming pool on level 76

THE ZENITH OF CONVENIENCE, WITHIN

To complement the residences, offices and hotel, Burj Khalifa offers a range of fully integrated facilities management and customer care services. These conveniences are managed by a team of highly trained professionals and include retail kiosks, concierge, courier and deliveries and laundry services.

A café and store located in the Residence lobby offers easy access to everyday necessities. A children's day care centre and tennis facilities add to the amenities.

For the convenience of residents and visitors, Burj Khalifa has 3,000 car parking spaces on four levels.



THE PEAK OF LUXURY

The Residence

Home to only a select few, 900 exclusive residences were designed for connoisseurs of fine living. Spread over levels 19 to 108, these exquisite spaces include studios, one, two, three and four-bedroom apartments. In The Residence lobby 'World Voices', an intriguing sculpture by renowned artist Jaume Plensa symbolises the global collaboration that made Burj Khalifa a reality.

The Corporate Suites

Taking business excellence to a new level, The Corporate Suites are located on the highest levels of Burj Khalifa, occupying 37 floors. The top three floors merge into a single office and the entrance lobby is at the concourse of the tower. Details that ensure a unique experience include valet parking and express lifts that take office visitors directly to a lobby lounge on level 123.

Armani Hotel Dubai

Marking another world first, the Armani Hotel Dubai is located within Burj Khalifa. From chic rooms to carefully selected furnishings and fabrics, to impeccable service, every aspect of this exceptional hotel bears the signature of fashion legend Giorgio Armani. Featuring 160 guest rooms and suites, world-class restaurants and a spa, Armani Hotel Dubai is defined by the highest standards of aesthetics and service excellence.

Armani Residences Dubai

Reflecting his individual approach to elegance and style, Armani Residences have been personally designed by Giorgio Armani. Located on levels 9 to 16, the 144 one and two-bedroom suites highlight the famous designer's smooth, understated style combined with space and beautiful furnishings. Residents enjoy full access to all the services offered by Armani Hotel Dubai and to the recreational and entertainment facilities within Burj Khalifa.



At the Top, Burj Khalifa

Offering sweeping vistas of Dubai, At the Top, Burj Khalifa is an unforgettable ten-part journey of discovery that is a must-visit attraction for residents and visitors alike. Visitors are first treated to an interactive experience that takes them through the evolution of modern Dubai and the inspiration behind Burj Khalifa. The excitement then continues with a 60-second ride in high-speed elevators, moving at 10 metres per second, to the world's highest observation deck with an outdoor terrace. For those who want to commemorate their adventure, the At the Top retail boutique offers special souvenirs.

The Offices

Complementing The Corporate Suites, The Offices is a 12-storey annex with direct access to Burj Khalifa and The Dubai Mall. For the convenience of tenants, parking spaces for The Offices will be offered at the mall and at the tower.

Armani/Pavilion

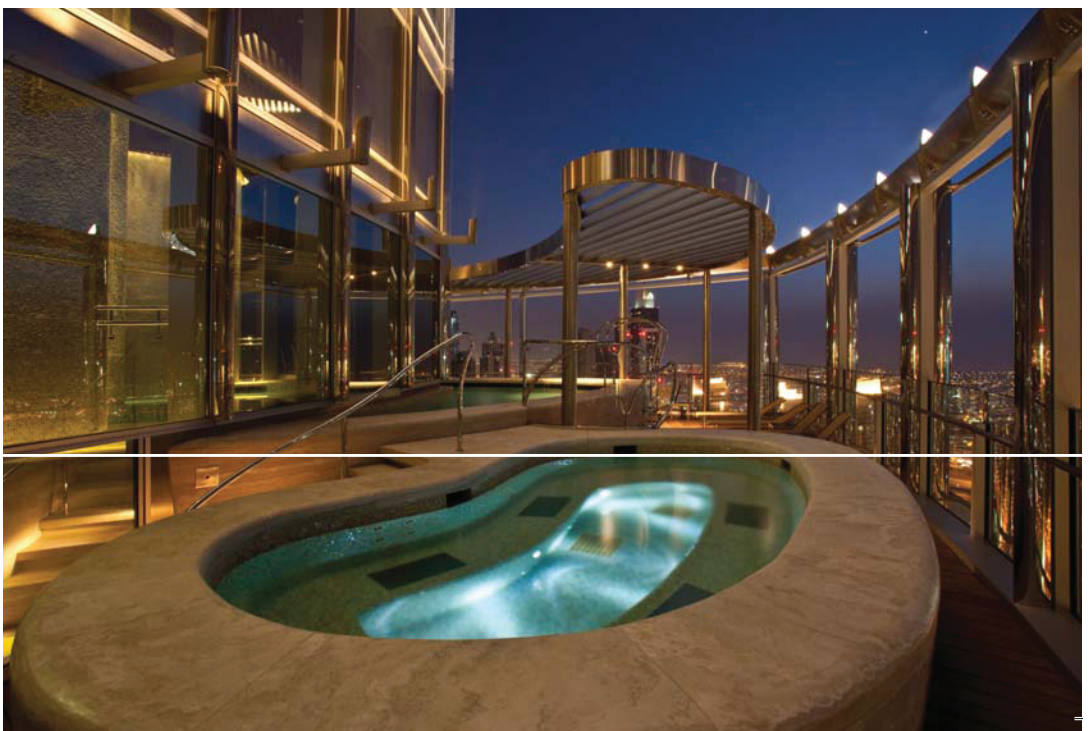
An open-air venue designed to host events, the Armani/Pavilion provides spectacular views of The Dubai Fountain and is exclusively managed by Armani Hotel Dubai.

The Park

Celebrating the theme 'A Tower in a Park', Burj Khalifa stands tall amidst 'The Park', an eleven-hectare green oasis that surrounds the foot of the tower. With seven spectacular water features, lush green gardens and colourful flowering trees, this is part of an effective 'green' initiative - water condensation from the tower's cooling equipment is recovered, to provide an estimated 15 million gallons of water a year, to irrigate the landscape.

Water Features

The Park's 11 hectares include seven, one-of-a-kind water features, designed by California-based WET, the creators of The Dubai Fountain and the Fountains of Bellagio in Las Vegas.



KEY FACTS

Total built-up area: 5.67 million square feet

Final height: 828 metres (2,716.5 ft)

Final number of floors: Over 200 storeys,
including 158 habitable levels

Total number of elevators: 57

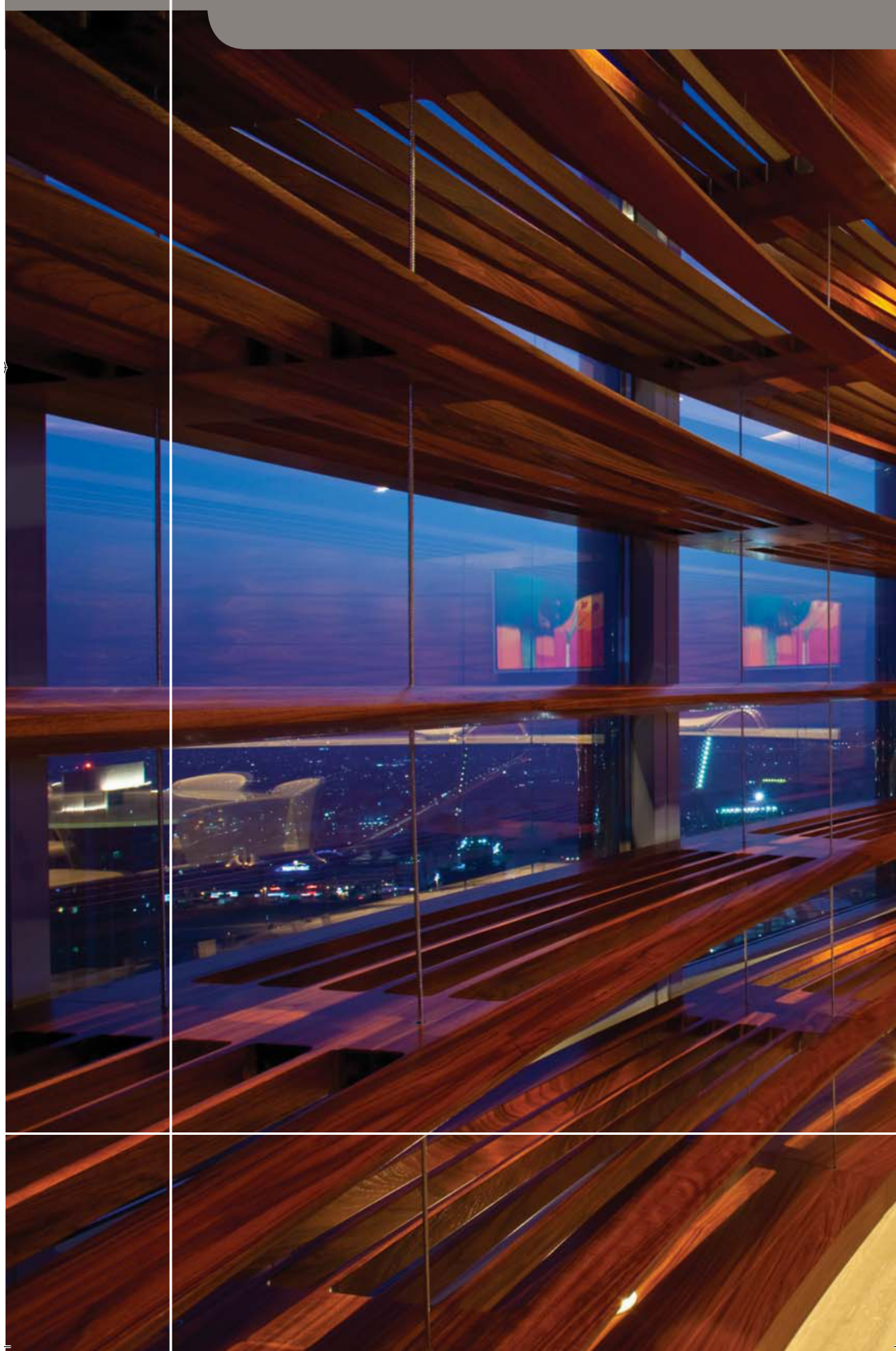
Developer: Emaar Properties PJSC

Architects and Engineers: Chicago-based Skidmore,
Owings and Merrill (SOM)

Designer: Adrian Smith

Main Contractor: South Korea's Samsung Corporation

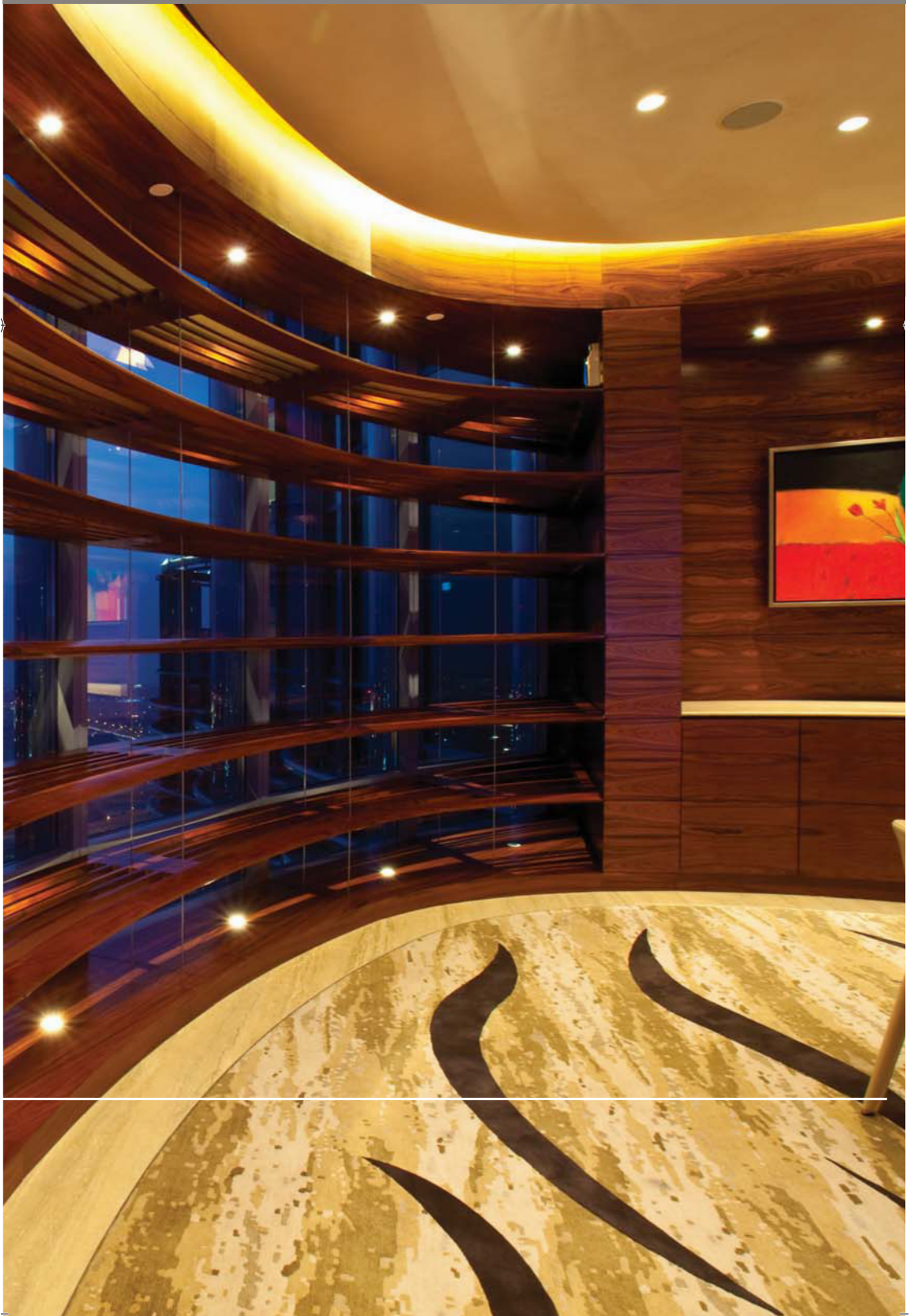
Project & Construction Manager: New York-based
Turner International



A SHINING EXAMPLE – MAINTENANCE AND SAFETY

Accolades for achievement continue beyond the completion of Burj Khalifa. Maintaining a tower of such magnitude required intensive planning right at design stage and continues to be a challenging aspect of everyday activity. Vital aspects to consider include window washing and façade maintenance, plumbing, electricity and water supply and fire safety among others.

To ensure the upkeep of the tallest building in the world, many innovative measures were put in place. These include uniquely designed, permanently installed building maintenance units, efficient water recycling system and other unprecedented features.





1 Mohammed Bin Rashid Boulevard
Downtown Dubai
Dubai, UAE

PO Box 888888, Dubai, UAE

T +971 4 888 8888 or 800 BURJ
E customercare@burjkhalifa.ae
www.burjkhalifa.ae