



NIKKI BEACH RESIDENCES | DUBAI UAE

A development by:





A MAGNIFICENT COLLECTION OF
RESIDENCES DESIGNED FOR
THE LUXURY DUBAI LIFESTYLE.

تشكيلة رائعة من المنازل الفاخرة ذات
التصميم الأنيق الذي يتناسب مع نمط
الحياة الراقي في دبي



CONTENTS

DUBAI	3
PEARL JUMEIRA	4
MERAAS	7
NIKKI BEACH	8
LOCATION MAP	12
PROJECT MASTERPLAN	14
ABOUT NIKKI BEACH HOTELS & RESORTS	16
NIKKI BEACH RESORT & SPA DUBAI	19
NIKKI BEACH RESIDENCES	20
KEY FACTS	22
FLOOR PLANS	24
APARTMENT LOCATOR	50

المحتويات

دبي	3
بيرل جميرا	4
شركة ممراس	7
NIKKI BEACH	8
خريطة الموقع	12
المخطط الرئيسي	14
نبذة عن فنادق ومنتجعات NIKKI BEACH	16
منتجع وسبا NIKKI BEACH في دبي	19
NIKKI BEACH ريزيدنسز	20
حقائق أساسية	22
مخططات الطوابق	24
دليل الشقق	50



DUBAI

A CITY WITH A VISION

Dubai never stops surprising the world with its agility and determination - a city led by a very sharp vision that challenges the impossible and races against time in its pursuit of excellence. It is these values that characterize Dubai, giving it a quintessentially unique vibe, aura and charm.

Dubai has emerged as a global hub for business and tourism boasting an impressive number of international brands and some equally astounding landmarks that dominate its iconic skyline.

دبي

مدينة ذات رؤية

لا تكفّ دبي عن إدهاش العالم بعزمها على كسر جدار المستحيل. فتلك المدينة تمتلك رؤية استثنائية تسابق الزمن وتسعى إلى التفوق، مدعومة بالعديد من العوامل الفريدة التي تميزها عن غيرها من المدن.

أضحت دبي الآن إحدى أهم مراكز الأعمال العالمية ووجهة سياحية لا يُشَقُّ لها غبار، واستقطبت كذلك عدداً ضخماً من العلامات التجارية العالمية، وبنيت لنفسها سمعة عطرة بفضل مشاريعها الضخمة التي أصبحت أيقونة الزمان والمكان.



PEARL JUMEIRA AN ELITE ADDRESS IN DUBAI

Pearl Jumeira is a reclaimed island within the Arabian Gulf, spanning 8.3 million square feet and overlooking Dubai's spectacular skyline. Featuring 7 residential areas, a community town center with retail facilities, schools, mosques, beaches, waterfront hotels and a unique two kilometer promenade, the island caters to individuals who enjoy staying connected to the city even while living away from its hustle. The size, location and exclusivity of Pearl Jumeira make it a unique address in the heart of Dubai's finest residential district.

بيرل جميرا الوجهة الجذابة للنخبة في دبي

تمتد جزيرة بيرل جميرا الواقعة على شواطئ الخليج العربي على مساحة 8.3 مليون قدم مربع، وتطل على شواطئ دبي الساحرة. تضم بيرل جميرا 7 مناطق سكنية ومركزاً اجتماعياً واحداً مع عدد من متاجر التجزئة، والمدارس، والشواطئ، والفنادق المطلّة على البحر، وممشى بطول 2 كم. وهكذا تليي الجزيرة جميع تطلعات الأشخاص الذي يودون العيش بالقرب من المدينة لكن بعيداً عن ضجيجها. وإن موقع جزيرة بيرل جميرا الحصري يجعل منها عنواناً بارزاً ضمن أفضل مناطق دبي السكنية.





MERAAS

Meraas is dedicated to making Dubai and the UAE better for people to live, work and play in. We design for a diverse mix of people to stimulate a creative urban culture where the next generation of ideas, businesses and communities can take root.

Our investments ensure a better future for generations to come and spread across different sectors including food, retail, leisure, hospitality, health and education. Our destinations which include to date – City Walk, The Beach, Boxpark, Last Exit, The Outlet Village, and Kite Beach – are open places for communities to socialise, explore, learn, play, create and innovate.

مراس

تلتزم مراس بإضافة كل ما يرتقي بالمدينة لتصبح مكاناً أفضل للعيش، والعمل، والزيارة. نحن نبكر من أجل مجتمع متنوع بأفراده ولإغناء وتحفيز ثقافة حضرية مبدعة تساهم في ترسيخ أنماط جديدة من الأفكار، والاعمال، والمجتمعات.

استثماراتنا تسعى لضمان مستقبل أفضل للأجيال المقبلة، وتغطي مجموعة من المشاريع المبتكرة في قطاعات الأغذية، تجارة التجزئة، التسلية والترفيه، الضيافة، الصحة والتعليم. وتضم وجهات مراس التي توفر أسلوب حياة استثنائي، ذا بييتش، سيتي ووك، بوكس بارك، لاست إكزيت وذا أوتلت فيليدج، والتي تتميز بغضاها المفتوح الذي يوفر بيئة اجتماعية حيوية وفرصة للتعليم، والإبداع، والترفيه.

NIKKI BEACH

In 1998, entrepreneur Jack Penrod introduced the world to Nikki Beach; the ultimate beach club experience that combines the elements of entertainment, dining, music, fashion, film and art into one. Nikki Beach continues to make its mark in the hottest addresses and trendsetting locales worldwide.

Nikki Beach plays host to some of the greatest events around the world. Delivering a repertoire of world-class events and entertainment options around the world in exotic and beautiful locations, Nikki Beach creates a one-of-a-kind vibe and ambiance.

Today, Nikki Beach has transcended its international venues and grown into a global, multifaceted luxury lifestyle & hospitality brand.

NIKKI BEACH

قام رائد الأعمال جاك بينرود بتأسيس النادي الشاطئي Nikki Beach في العام 1998 بهدف توفير تجارب استثنائية تجمع بين الترفيه والفنون والأفلام وغيرها في مكان واحد. ويستمر Nikki Beach في الانتشار في أكثر المنتجعات والأماكن الحديثة والعصرية حول العالم.

كما يستضيف أكبر الفعاليات العالمية ويقدم خيارات ترفيه في بعض من أجمل البقاع على الإطلاق. ويذكر Nikki Beach بأجواء مفعمة بالحياة.

وقد تطور اليوم ليصبح وجهة عالمية تستقطب عشاق أنماط الحياة الفاخرة ذات النشاطات المتعددة.







LOCATION MAP

- | | | | | |
|----------------------|-----------------|-------------------|----------------------|--------------------------|
| 1. Burj Khalifa | 5. Mercato Mall | 9. Police Station | 13. Jumeira Bay | 17. Mall of the Emirates |
| 2. Emirates Towers | 6. Khazan Park | 10. Zabeel Park | 14. Pearl Jumeira | 18. Emirates Hospital |
| 3. DWTC | 7. Emaar Square | 11. Boxpark | 15. Dubai Mall | 19. Medcare Hospital |
| 4. Emirates NBD Bank | 8. Shangri La | 12. City Walk | 16. Madinat Jumeirah | |

17. مول الإمارات
18. مستشفى الإمارات
19. مستشفى ميد كير
13. جميرا باي
14. بيرل جميرا
15. دبي مول
16. مدينة جميرا

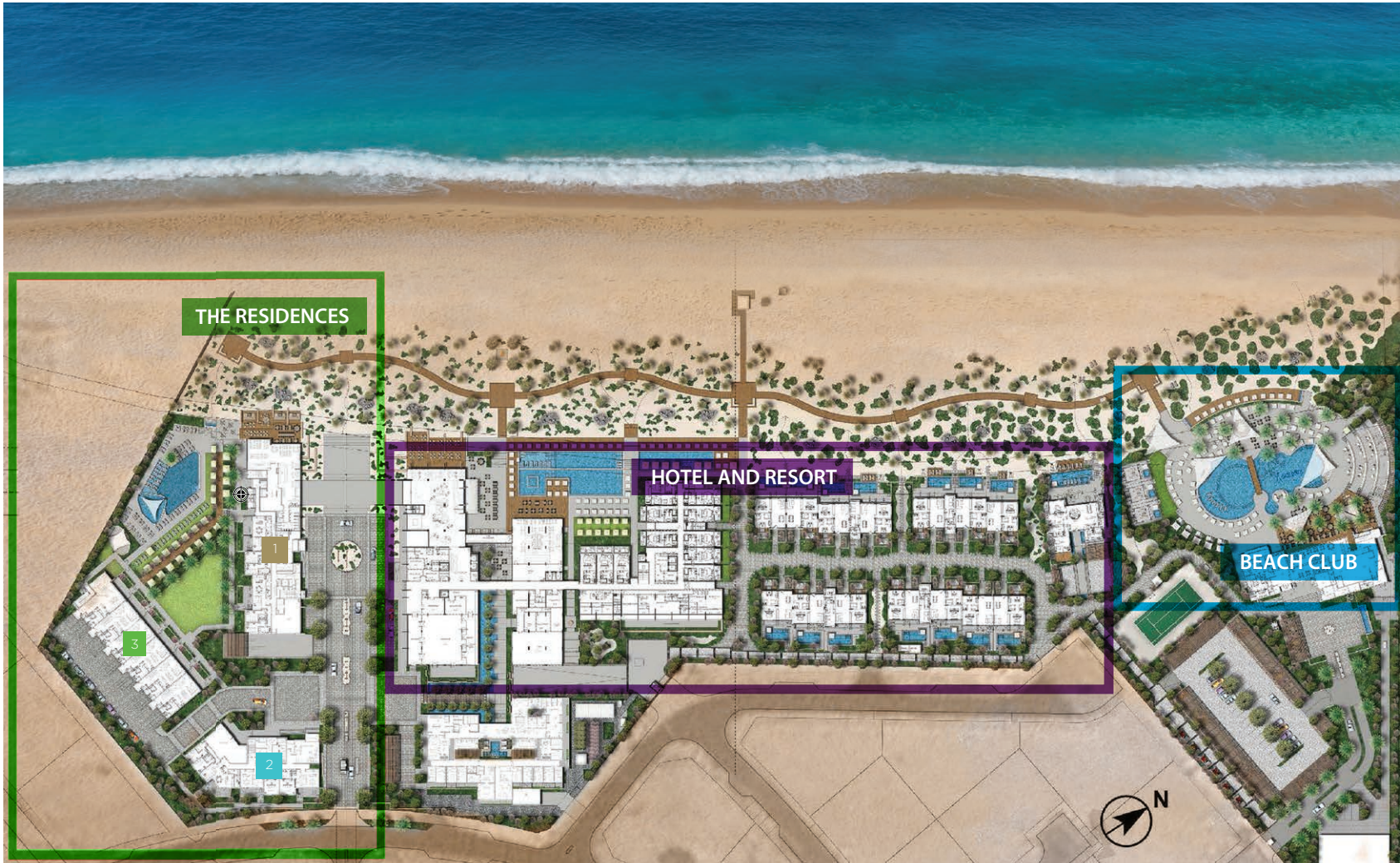
9. مركز الشرطة
10. حديقة زعبل
11. بوكس بارك
12. سيتي ووك

5. ميركاتو مول
6. حديقة الخزان
7. إعمار سكوير
8. فندق شانغريل دبي

1. برج خليفة
2. أبراج الإمارات
3. مركز دبي التجاري العالمي
4. بنك الإمارات دبي الوطني

خريطة الموقع

PROJECT MASTER PLAN



- 1 Shoreline apartments
- 2 Skyline apartments
- 3 Townhouses and Skyline apartments

ABOUT NIKKI BEACH HOTELS & RESORTS

Nikki Beach Hotels & Resorts is a division of Nikki Beach Worldwide. A natural progression from the famous Beach Club brand, Nikki Beach Hotels & Resorts aims to grow its presence of lifestyle boutique hotels and resorts in desirable beachfront and urban locations.

Nikki Beach Hotels & Resorts creates an immersive, cool and glamorous lifestyle experience for guests, blending large comfortable rooms, contemporary and modern design, cutting-edge technology and in-room entertainment, with bespoke and attentive service.

Energy is at the center of its properties. Mirroring energy patterns in everyday life, Nikki Beach Hotels & Resorts offers guests a chance to reflect their energy levels at specific times of day and just be themselves, across outlets and venues. High or low, blunt or elusive, the destination allows guests to design their own journeys, and realize their own ultimate Nikki Beach experience.

Nikki Beach Hotels & Resorts currently has properties in Koh Samui, Thailand and in Porto Heli, Greece and over the next few years will be opening properties in Dubai, UAE; Bodrum, Turkey; Courchevel, France; and Hvar, Croatia; among others.



نبذة عن فنادق ومنتجعات NIKKI BEACH

تتبع فنادق ومنتجعات Nikki Beach إلى Nikki Beach العالمية، وتهدف إلى تعزيز حضورها في قطاع الفنادق والمنتجعات في المزيد من الوجهات الجذابة.

وتوفر فنادق ومنتجعات Nikki Beach تجارب غنية لعملائها ونزلائها، بدءاً من الغرف المريحة والكبيرة، ومروراً بالتصاميم العصرية والحديثة والتكنولوجيا المبتكرة داخل الغرف، إضافة إلى خدمات مميزة.

تزخر فنادق ومنتجعات Nikki Beach بالطاقة والحيوية، إذ تمنح النزلاء فرصة التعبير عن أنفسهم بدون قيود وتصميم رحلاتهم الخاصة وعيش تجربة Nikki Beach الفريدة من نوعها.

وتنتشر فنادق ومنتجعات Nikki Beach في كل من تايلندا واليونان، وستقوم بافتتاح منتجعاتها الجديدة قريباً في دبي، ومدينة بودروم التركية، وكورثوفيل في فرنسا، وهفار الكرواتية، وغيرها.





NIKKI BEACH RESORT & SPA DUBAI

Meraas has partnered with Nikki Beach Hotels & Resorts to bring the brand's first property in the Middle East to Pearl Jumeira in Dubai.

Set against a white sandy beachfront, Nikki Beach Resort & Spa Dubai will include 117 rooms and suites, as well as 15 beach villas.

The project will also host 3 restaurants and an ultra-VIP lounge, as well as Nikki Spa by ESPA, Tone Fitness Center, the brand's world-renowned Beach Club, and a pool surrounded by plush, all-white sun beds. The top-line facilities will reflect the same stylish, contemporary look and feel as all of the brand's outlets around the world.

Inspired by the design vision of Jack Penrod, Nikki Beach Resort & Spa Dubai has been conceptualized in collaboration with DSA Architects International and will feature interiors by Gatserelia Design.

منتجع وسبا NIKKI BEACH في دبي

عقدت شركة مراس شراكة مع فنادق ومنتجعات Nikki Beach لبناء أول مشاريعها في منطقة الشرق الأوسط في جزيرة "بيرل جميرا" في دبي.

وستتضمن منتجعات وسبا Nikki Beach الواقعة قبالة الشواطئ الرملية البيضاء الساحرة 117 غرفة وجناحاً و15 فيلا شاطئية.

كما يضم المشروع 3 مطاعم، ووردة كبار الشخصيات، وNikki سبا، ومركزاً للياقة البدنية، ونادياً شاطئياً، وبركة سباحة محاطة بكراسي التمدد تحت أشعة الشمس، وستعكس المرافق المظهر العام لمشاريع العلامة التجارية ومنتجعاتها حول العالم.

وقد استوحيت التصميمات من رؤية جاك بينورد، وتم تصميم فكرة منتجعات وسبا Nikki Beach بالتعاون مع شركة DSA Architects International، كما تشرف شركة Gatserelia Design على التصميم الداخلي.



NIKKI BEACH RESIDENCES

Adjacent to the Nikki Beach Resort & Spa, the residences will offer 63 branded apartments in collaboration with Meraas. Varying from 1 to 4 bedroom units, the branded residences will include 6 townhouses and 1 penthouse. Each unit will have an allocated parking space.

The apartment buildings will remain true to the Nikki Beach brand guidelines and offer a modern, minimalist fresh resort feel through the use of natural materials. The residents will also have access to a gym and multiple F&B outlets and enjoy the close proximity to the 450 meter shoreline stretch spread across the resort.

NIKKI BEACH ريزيدنسز

بمحاذاة منتجع وسبا Nikki Beach، ستقوم Nikki Beach ريزيدنسز بالتعاون مع مراس بتقديم 63 شقة سكنية من علامتها التجارية. تتراوح الشقق السكنية بين غرفة نوم واحدة إلى أربع غرف نوم، وستتضمن 6 شقق تاونهاوس وشقة بنتهاوس واحدة. كما ستحتوي كل وحدة سكنية على مكان مخصص لركن السيارات.

بحورها ستحافظ مباني الشقق السكنية على لمسات علامة Nikki Beach التجارية، وستوفر شعوراً بالانتعاش والراحة بفضل استخدامها مواد طبيعية. كما سيتمكن الزوار من استخدام نادي اللياقة البدنية والمطاعم القريبة والعديدة، وسيستمتعون أيضاً بقرتهم من شاطئ البحر الممتد على مسافة 450 متر.





KEY FACTS

- 52,000 square meters total area
- 117 hotel rooms and suites
- 15 hotel beach villas
- 63 residential apartments
 - 12 one bedroom apartments
 - 26 two bedroom apartments
 - 18 three bedroom apartments
 - 6 four bedroom townhouse apartments
 - 1 four bedroom penthouse
 - Designated VIP basement parking with designated lift for the penthouse.
- 450 meter private beach shoreline

AMENITIES

- Outdoor Swimming Pool
- Gym
- Access to Hotel Private Beach
- Childrens Play Area
- 133 Car Parking Spots

SERVICES

- 24x7 Security
- Intercom
- Waste management
- Central cooling
- Visitor Parking
- Etisalat services provision



المرافق

- حوض سباحة خارجي
- صالة رياضية
- إمكانية استخدام شاطئ الفندق الخاص
- منطقة لعب للأطفال
- موقف لـ 133 سيارة

الخدمات

- حراسة على مدار الساعة
- جهاز الاتصال الداخلي
- إدارة النفايات
- تبريد مركزي
- موقف للزوار
- توفير خدمات "اتصالات"

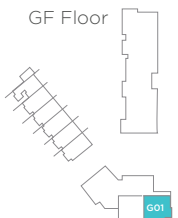
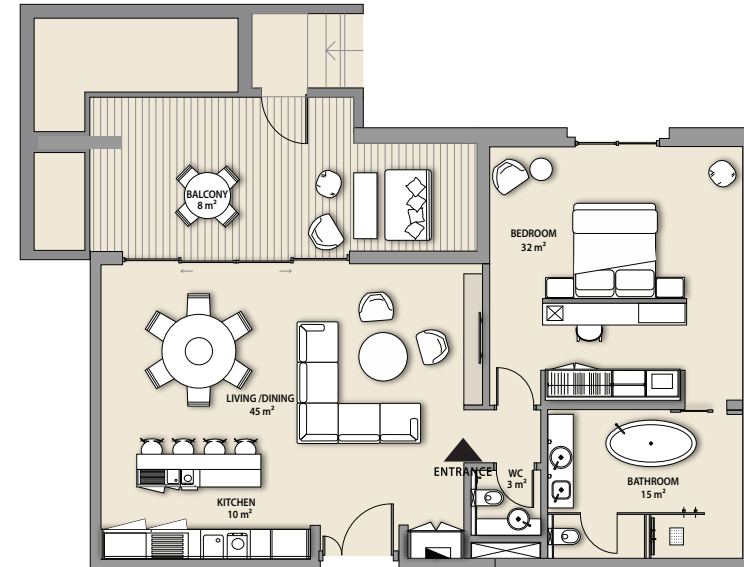
معلومات أساسية

- تبلغ المساحة الإجمالية 52,000 متر مربع
- 117 غرفة وجناحاً فندقياً
- 15 فيلا فندقية على الشاطئ
- 63 شقة سكنية
- 12 شقة سكنية بغرفة نوم واحدة
- 26 شقة سكنية بغرفتي نوم
- 18 شقة سكنية بثلاث غرف نوم
- 6 شقق تاونهاوس بأربع غرف نوم
- بنتهاوس بأربع غرف نوم
- موقف سيارات في السرداب المخصص لكبار الشخصيات
- مع مصعد خاص يؤدي إلى البنتهاوس
- شاطئ خاص بطول 450 متر



1 BEDROOM

APARTMENT TYPE A



SKYLINE UNIT

NET AREA

BALCONY

TOTAL

G01

1128 sq.ft

493 sq.ft

1622 sq.ft

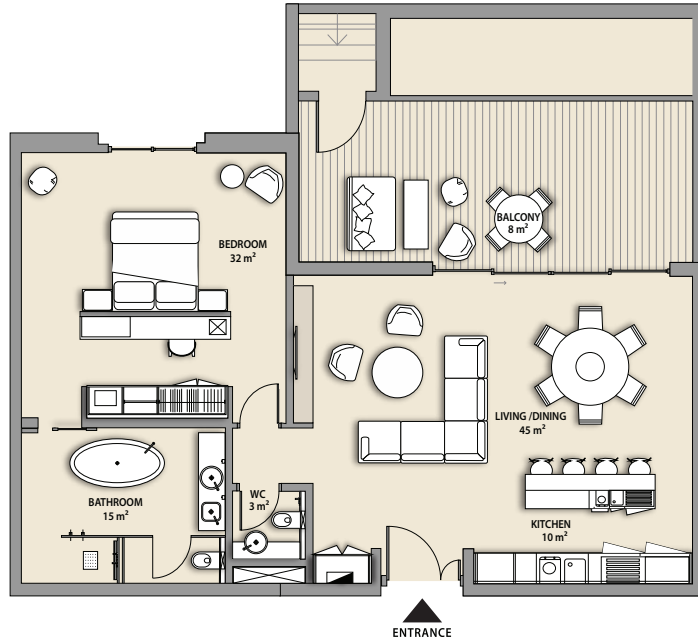
VIEW

Backyard

**Furniture in the layout is indicative only and will not be supplied within the apartment sale.*

1 BEDROOM

APARTMENT TYPE A



SKYLINE UNIT

G02

VIEW

NET AREA

1128 sq.ft

Backyard

BALCONY

480 sq.ft

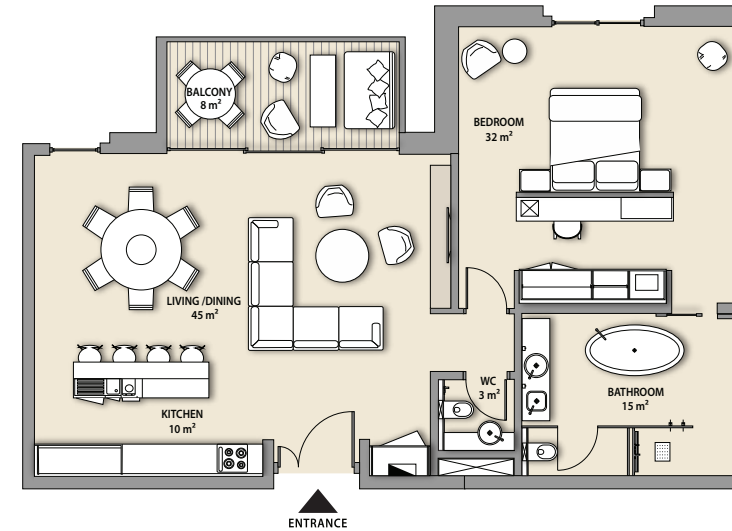
TOTAL

1609 sq.ft

*Furniture in the layout is indicative only and will not be supplied within the apartment sale.

1 BEDROOM

APARTMENT TYPE A



SKYLINE UNITS

101

102

VIEW

NET AREA

1128 sq.ft

1128 sq.ft

Pearl Jumeira

BALCONY

223 sq.ft

102 sq.ft

TOTAL

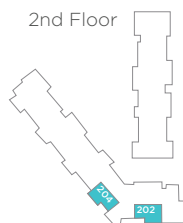
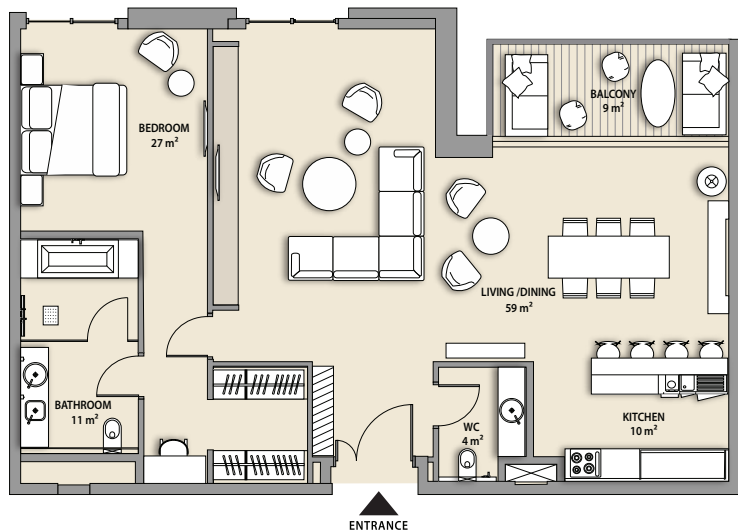
1352 sq.ft

1230 sq.ft

*Furniture in the layout is indicative only and will not be supplied within the apartment sale.

1 BEDROOM

APARTMENT TYPE A1



SKYLINE UNITS

202

204

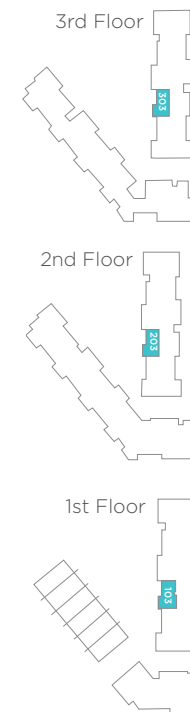
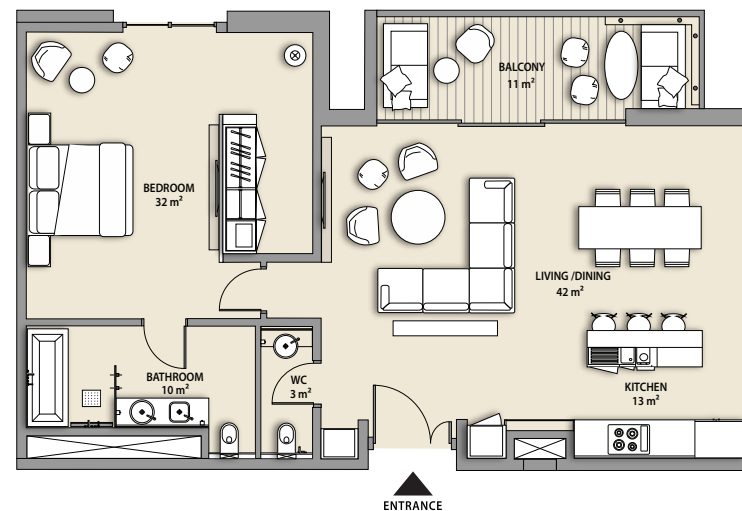
VIEW

NET AREA	1180 sq.ft	1182 sq.ft	Dubai Skyline/Pearl Jumeira
BALCONY	102 sq.ft	81 sq.ft	
TOTAL	1282 sq.ft	1263 sq.ft	

*Furniture in the layout is indicative only and will not be supplied within the apartment sale.

1 BEDROOM

APARTMENT TYPE B



SHORELINE UNITS

103, 203, 303

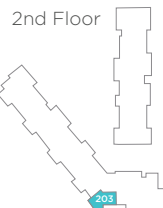
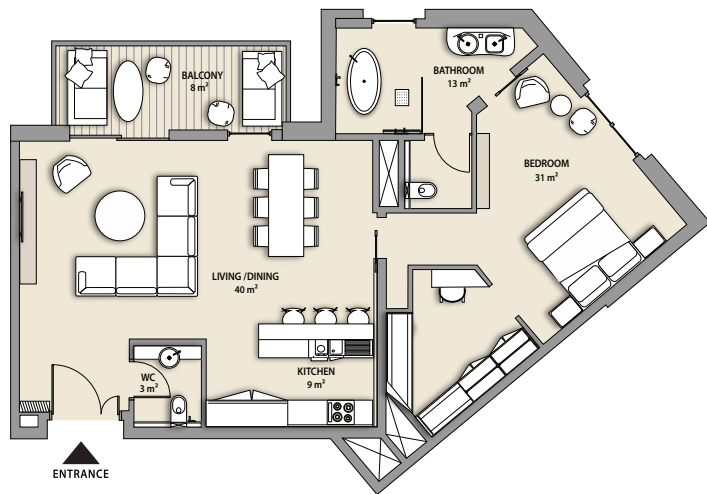
VIEW

NET AREA	1075 sq.ft	Courtyard/Pool
BALCONY	130 sq.ft	
TOTAL	1205 sq.ft	

*Furniture in the layout is indicative only and will not be supplied within the apartment sale.

1 BEDROOM

APARTMENT TYPE C



SKYLINE UNIT

203

VIEW

NET AREA

1039 sq.ft

Dubai Skyline/Pearl Jumeira

BALCONY

102 sq.ft

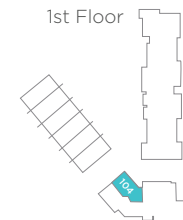
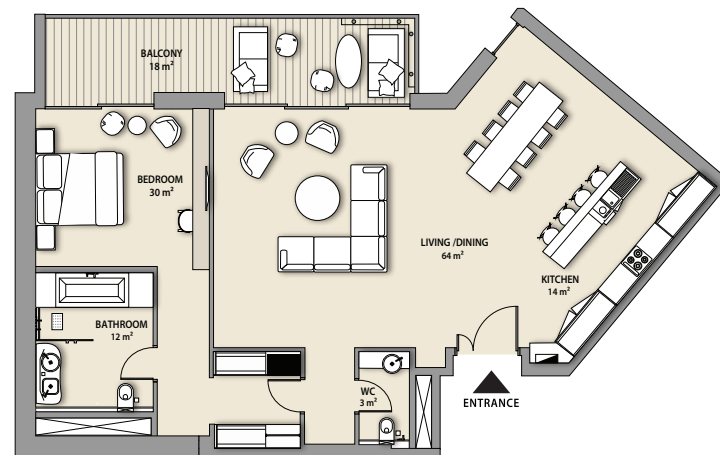
TOTAL

1141 sq.ft

*Furniture in the layout is indicative only and will not be supplied within the apartment sale.

1 BEDROOM

APARTMENT TYPE D



SKYLINE UNIT

104

VIEW

NET AREA

1326 sq.ft

Courtyard

BALCONY

199 sq.ft

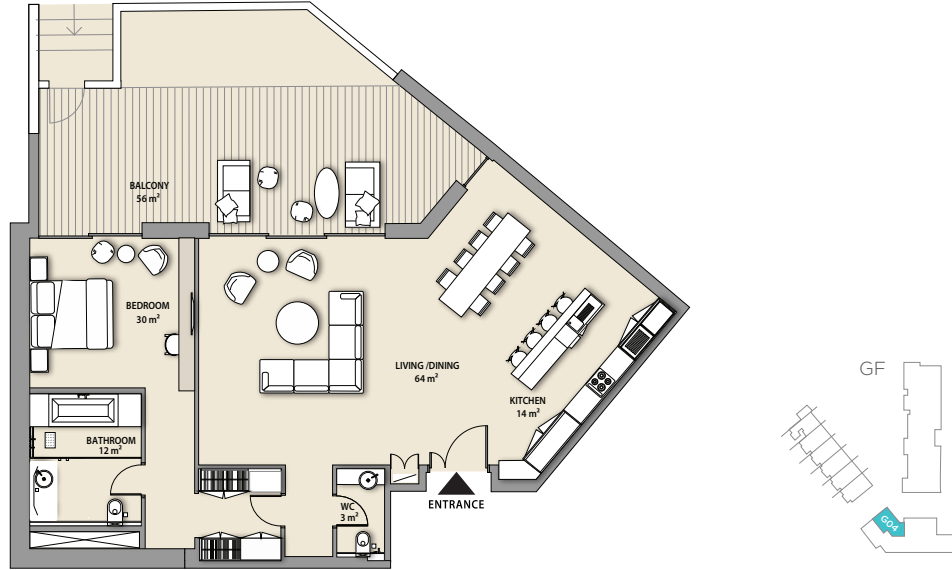
TOTAL

1525 sq.ft

*Furniture in the layout is indicative only and will not be supplied within the apartment sale.

1 BEDROOM

APARTMENT TYPE D



SKYLINE UNIT

G04

VIEW

Courtyard

NET AREA

1326 sq.ft

BALCONY

598 sq.ft

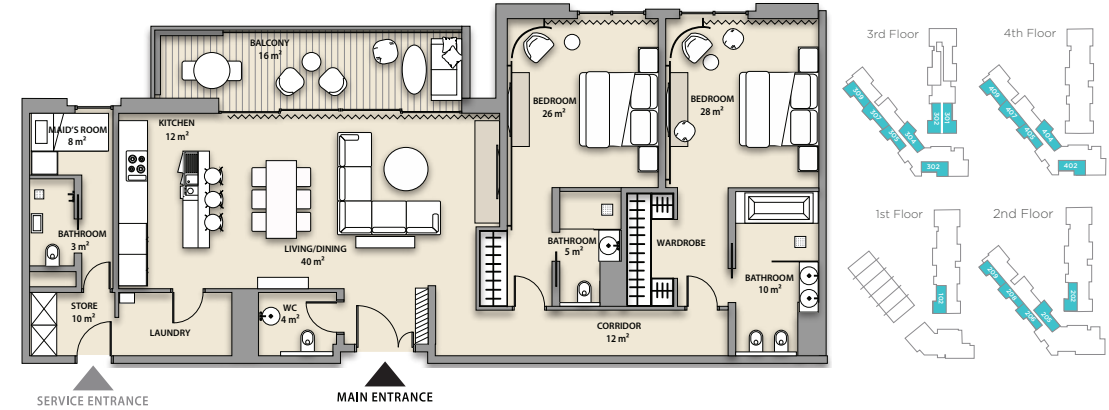
TOTAL

1924 sq.ft

*Furniture in the layout is indicative only and will not be supplied within the apartment sale.

2 BEDROOM

APARTMENT TYPE A



UNITS	VIEW	UNIT	VIEWS	UNITS	VIEWS
102, 202 302, 205 304, 404	Courtyard	301	Hotel/Courtyard	206, 208, 209, 305, 307, 309, 405, 407, 409, 302, 402	Dubai Skyline/ Pearl Jumeira

SHORELINE UNITS

**102, 202,
302, 301**

SKYLINE UNITS

208, 407

NET AREA

1680 sq.ft

BALCONY

178 sq.ft

TOTAL

1858 sq.ft

1676 sq.ft

178 sq.ft

1854 sq.ft

1681 sq.ft

178 sq.ft

1859 sq.ft

1672 sq.ft

178 sq.ft

1850 sq.ft

1682 sq.ft

178 sq.ft

1860 sq.ft

1679 sq.ft

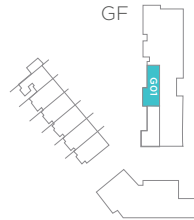
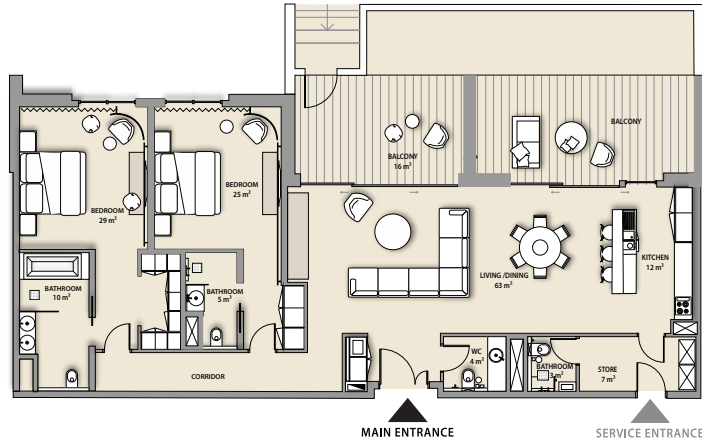
178 sq.ft

1857 sq.ft

*Furniture on balconies and curtains will be supplied to the following apartments: 301

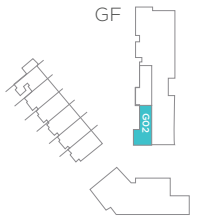
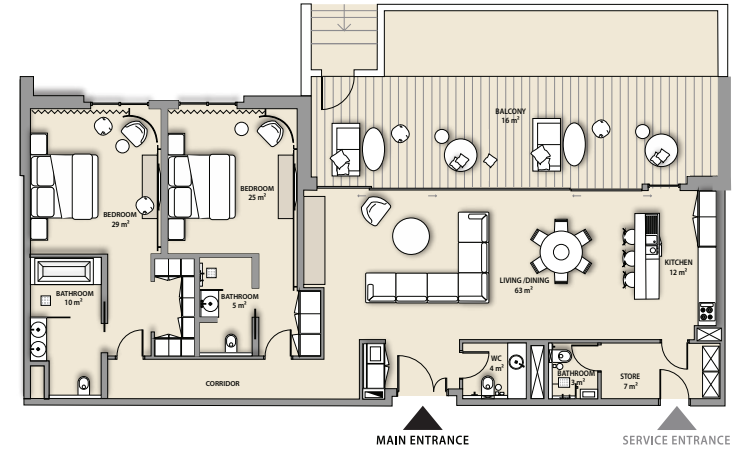
2 BEDROOM

APARTMENT TYPE A1



2 BEDROOM

APARTMENT TYPE A1



SHORELINE UNIT

G01

VIEW

NET AREA

1694 sq.ft

Courtyard

BALCONY

683 sq.ft

TOTAL

2377 sq.ft

*Furniture in the layout is indicative only and will not be supplied within the apartment sale.

SHORELINE UNIT

G02

VIEW

NET AREA

1698 sq.ft

Courtyard

BALCONY

528 sq.ft

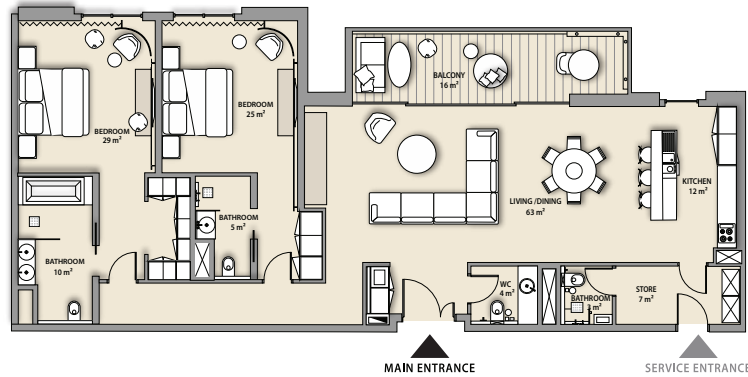
TOTAL

2226 sq.ft

*Furniture in the layout is indicative only and will not be supplied within the apartment sale.

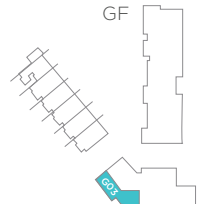
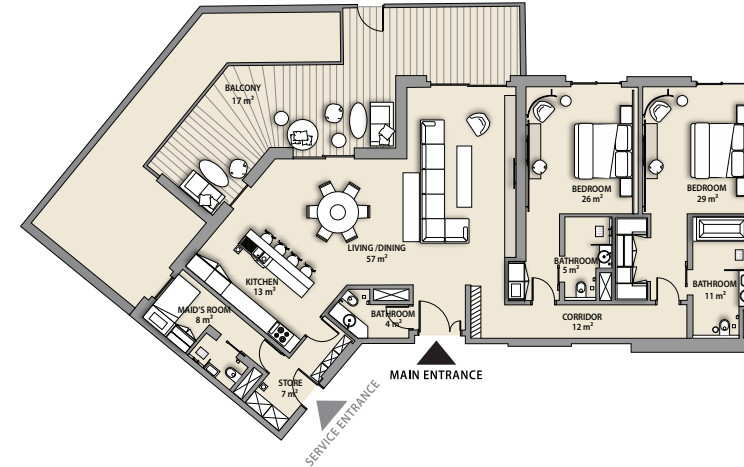
2 BEDROOM

APARTMENT TYPE A1



2 BEDROOM

APARTMENT TYPE B



SHORELINE UNIT

101, 201

VIEW

Hotel/Courtyard

NET AREA

1679 sq.ft

BALCONY

178 sq.ft

TOTAL

1858 sq.ft

SKYLINE UNIT

G03

VIEW

Backyard

NET AREA

1878 sq.ft

BALCONY

981 sq.ft

TOTAL

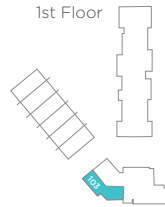
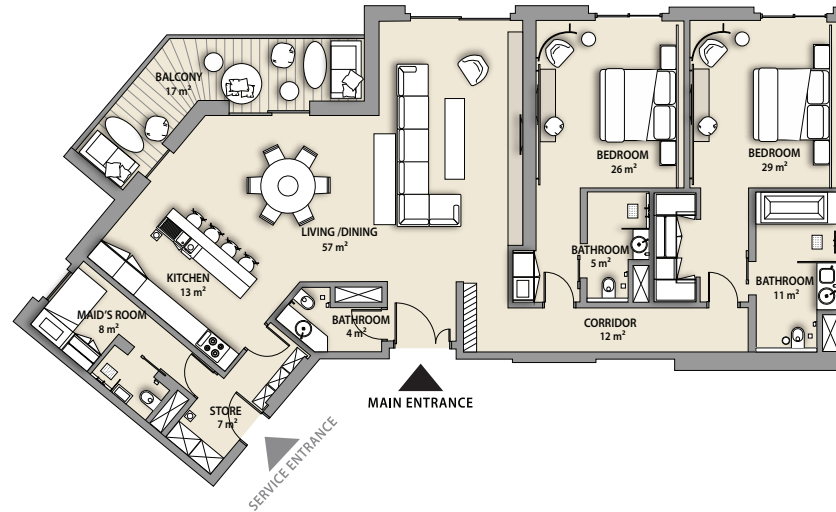
2859 sq.ft

*Furniture on balconies and curtains will be supplied to the following apartments: 101 & 201

*Furniture in the layout is indicative only and will not be supplied within the apartment sale.

2 BEDROOM

APARTMENT TYPE B



SKYLINE UNIT

103

VIEW

Pearl Jumeira

NET AREA 1878 sq.ft

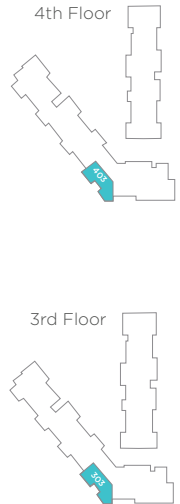
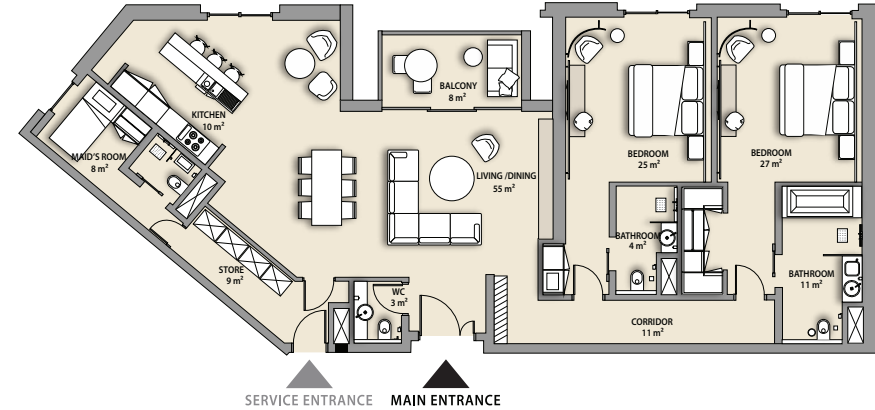
BALCONY 183 sq.ft

TOTAL 2061 sq.ft

*Furniture in the layout is indicative only and will not be supplied within the apartment sale.

2 BEDROOM

APARTMENT TYPE C



SKYLINE UNITS

303

403

VIEW

Dubai Skyline/Pearl Jumeira

NET AREA 1748 sq.ft

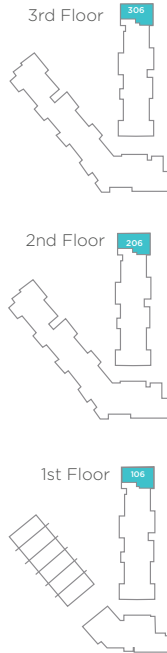
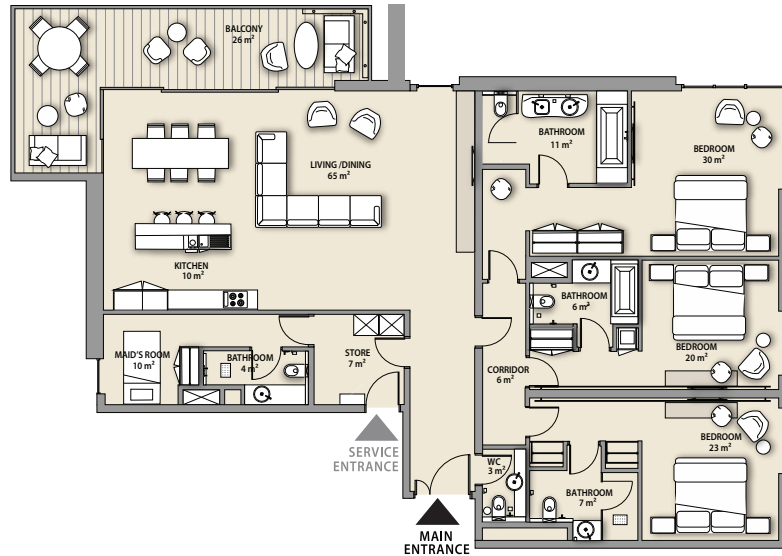
BALCONY 81 sq.ft

TOTAL 1829 sq.ft 1832 sq.ft

*Furniture in the layout is indicative only and will not be supplied within the apartment sale.

3 BEDROOM

APARTMENT TYPE A

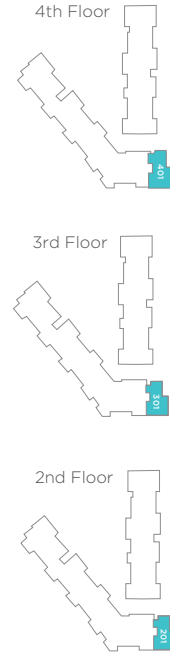
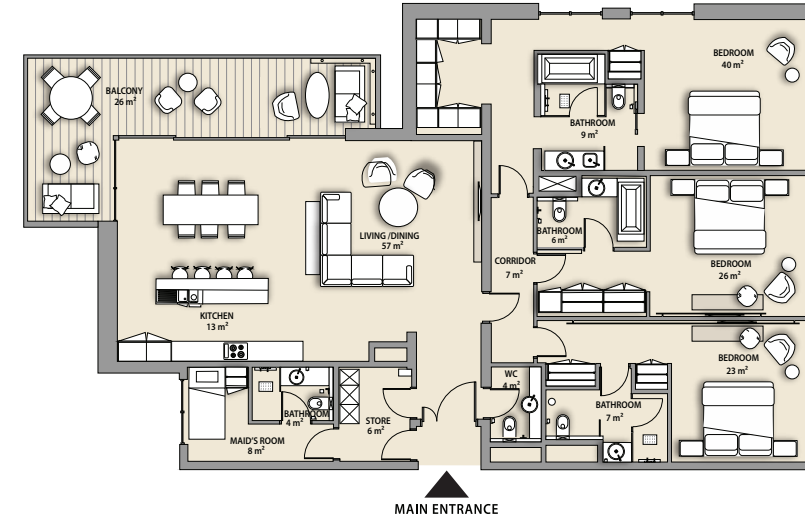


SHORELINE UNITS	106	206	306	VIEW
NET AREA	2157 sq.ft	2169 sq.ft	2169 sq.ft	Beach/Pool
BALCONY	289 sq.ft	291 sq.ft	289 sq.ft	
TOTAL	2446 sq.ft	2460 sq.ft	2458 sq.ft	

*Furniture in the layout is indicative only and will not be supplied within the apartment sale.

3 BEDROOM

APARTMENT TYPE B

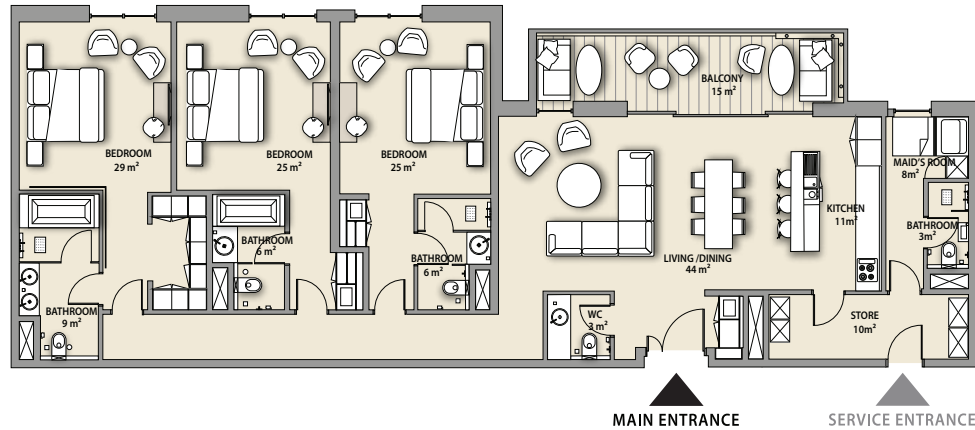


SKYLINE UNITS	201, 301, 401	VIEW
NET AREA	2226 sq.ft	Courtyard
BALCONY	292 sq.ft	
TOTAL	2518 sq.ft	

*Furniture on balconies and curtains will be supplied to the following apartments 201, 301, 401

3 BEDROOM

APARTMENT TYPE C

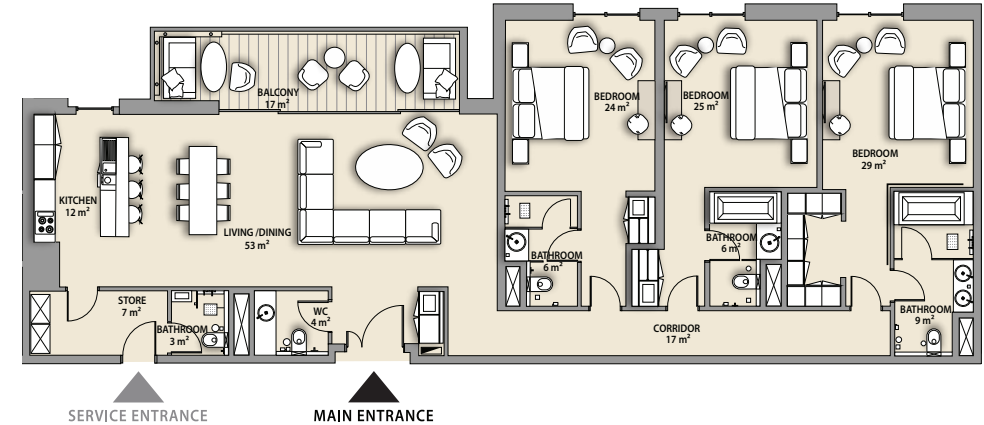


SHORELINE UNITS	104, 204	304	VIEW
SKYLINE UNITS	210, 308, 306, 406, 408	207	
NET AREA	2086 sq.ft	2079 sq.ft	2080 sq.ft
BALCONY	179 sq.ft	178 sq.ft	178 sq.ft
TOTAL	2265 sq.ft	2257 sq.ft	2264 sq.ft

*Furniture in the layout is indicative only and will not be supplied within the apartment sale.

3 BEDROOM

APARTMENT TYPE C1

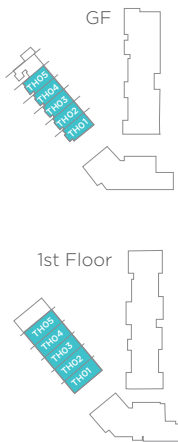
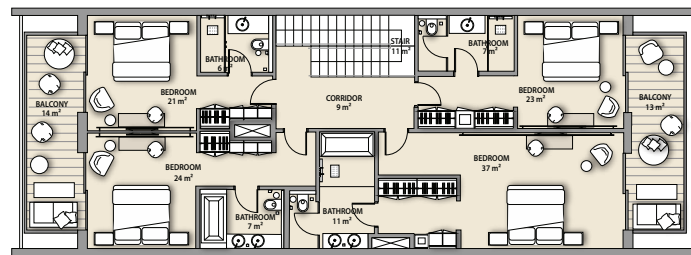
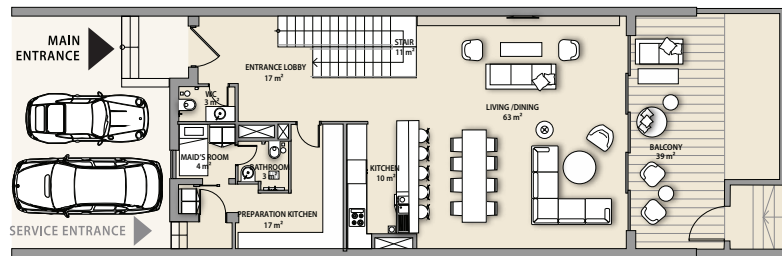


SHORELINE UNITS	105, 205, 305	VIEW
NET AREA	2092 sq.ft	Hotel/Courtyard
BALCONY	178 sq.ft	
TOTAL	2270 sq.ft	

*Furniture on balconies and curtains will be supplied to the following apartments: 105, 205, 305

TOWNHOUSE

APARTMENT TYPE A



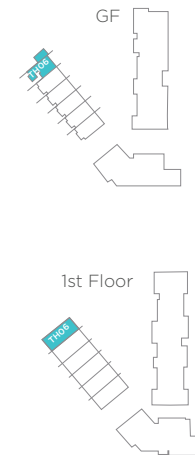
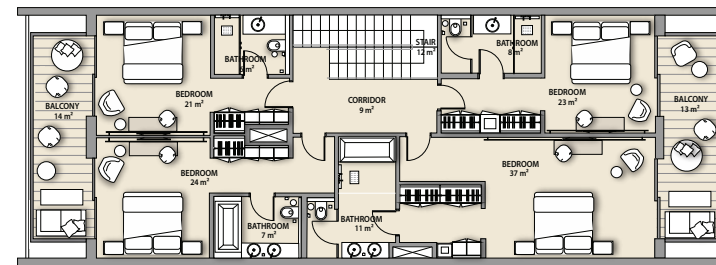
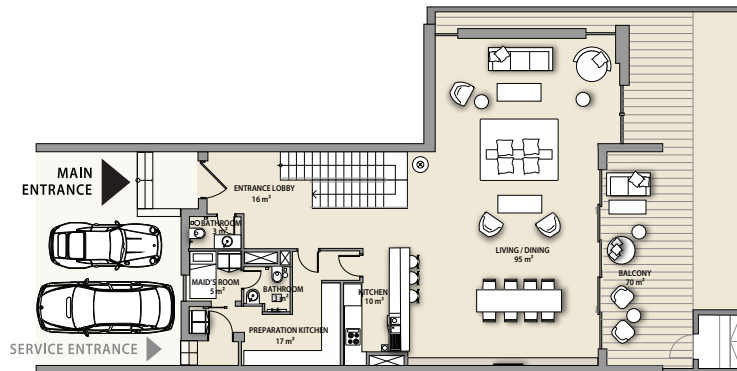
SKYLINE UNITS	TH01	TH02, TH03, TH04, TH05
NET AREA	3094 sq.ft	3048 sq.ft
BALCONY	1373 sq.ft	1351 sq.ft
TOTAL	4467 sq.ft	4399 sq.ft

VIEW
Pool/ Pearl Jumeira Skyline/ Courtyard

*Furniture in the layout is indicative only and will not be supplied within the apartment sale.

TOWNHOUSE

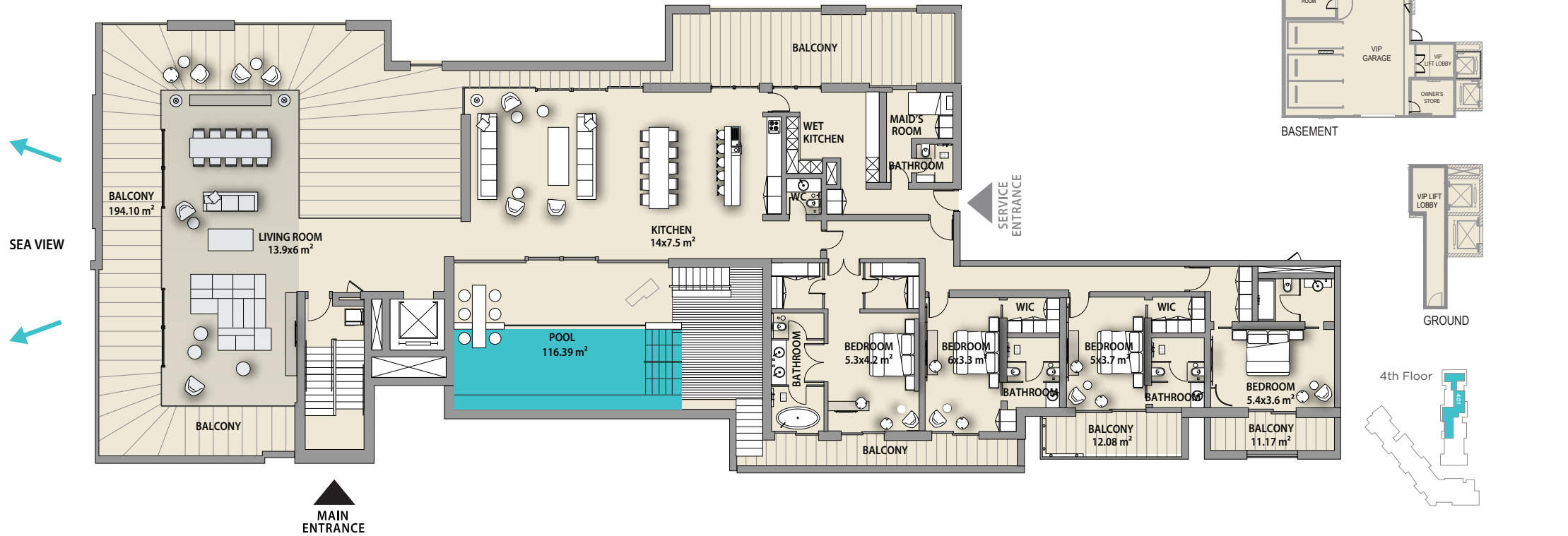
APARTMENT TYPE A1



SKYLINE UNITS	TH06	VIEW
NET AREA	3381 sq.ft	Pool/ Pearl Jumeira Skyline/ Courtyard
BALCONY	1707 sq.ft	
TOTAL	5088 sq.ft	

*Furniture in the layout is indicative only and will not be supplied within the apartment sale.

PENTHOUSE



SHORELINE UNIT

401

VIEW

NET AREA

7566 sq.ft

Pool/Skyline/Pearl Jumeira/

BALCONY

3592 sq.ft

Courtyard/Beach/Sea

TOTAL

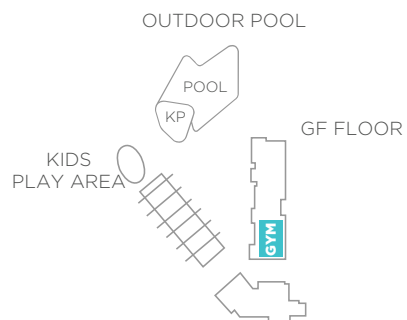
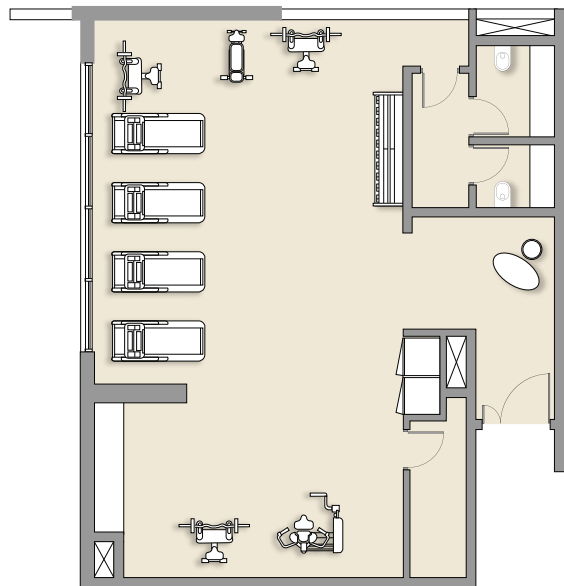
11159 sq.ft

*The unit area includes the basement dedicated VIP parking and the ground private lift lobby

*Furniture in the layout is indicative only and will not be supplied within the apartment sale.

SWIMMING POOL AND GYM

GROUND FLOOR



UNITS

GYM

Adult Swimming pool

Kids Swimming pool

Kids Play Area

NET AREA

128 m²

117 m²

Circa 31 m²

Circa 180 m²





Apartment Locator

UNIT NUMBER	BUILDING	LEVEL	BEDROOMS	UNIT TYPE	AREA SQ.FT	BALCONY SQ.FT	TOTAL AREA	PAGE
G01	1	G	2	TYPE A	1,694	683	2,377	34
G02	1	G	2	TYPE A1	1,698	528	2,226	35
G01	2	G	1	TYPE A	1,128	493	1,622	25
G02	2	G	1	TYPE A	1,128	480	1,609	26
G03	2	G	2	TYPE B	1,878	981	2,859	37
G04	2	G	1	TYPE D	1,326	598	1,942	32
TH01	2	G	4	TYPE A	3,094	1,373	4,467	44
TH02	2	G	4	TYPE A	3,048	1,351	4,399	44
TH03	2	G	4	TYPE A	3,048	1,351	4,399	44
TH04	2	G	4	TYPE A	3,048	1,351	4,399	44
TH05	2	G	4	TYPE A	3,048	1,351	4,399	44
TH06	2	G	4	TYPE A1	3,381	1,707	5,088	45
101	1	1	2	TYPE A1	1,679	178	1,858	36
102	1	1	2	TYPE A	1,680	178	1,858	33

Apartment Locator

UNIT NUMBER	BUILDING	LEVEL	BEDROOMS	UNIT TYPE	AREA SQ.FT	BALCONY SQ.FT	TOTAL AREA	PAGE
103	1	1	1	TYPE B	1,075	130	1,205	29
104	1	1	3	TYPE C	2,086	179	2,265	42
105	1	1	3	TYPE C1	2,092	178	2,270	43
106	1	1	3	TYPE A	2,157	289	2,446	40
101	2	1	1	TYPE A	1,128	223	1,352	27
102	2	1	1	TYPE A	1,128	102	1,230	27
103	2	1	2	TYPE B	1,878	183	2,061	38
104	2	1	1	TYPE D	1,326	199	1,525	31
201	1	2	2	TYPE A1	1,679	178	1,858	36
202	1	2	2	TYPE A	1,680	178	1,858	33
203	1	2	1	TYPE B	1,075	130	1,205	29
204	1	2	3	TYPE C	2,086	179	2,265	42
205	1	2	3	TYPE C1	2,092	178	2,270	43
206	1	2	3	TYPE A	2,169	291	2,460	40



Apartment Locator								
UNIT NUMBER	BUILDING	LEVEL	BEDROOMS	UNIT TYPE	AREA SQ.FT	BALCONY SQ.FT	TOTAL AREA	PAGE
201	2	2	3	TYPE B	2,226	292	2,518	41
202	2	2	1	TYPE A1	1,180	102	1,282	28
203	2	2	1	TYPE C	1,039	102	1,141	30
204	2	2	1	TYPE A1	1,182	81	1,263	28
205	2	2	2	TYPE A	1,679	178	1,857	33
206	2	2	2	TYPE A	1,676	178	1,854	33
207	2	2	3	TYPE C	2,080	179	2,259	42
208	2	2	2	TYPE A	1,680	178	1,858	33
209	2	2	2	TYPE A	1,681	178	1,859	33
210	2	2	3	TYPE C	2,079	178	2,257	42
301	1	3	2	TYPE A	1,680	178	1,858	33
302	1	3	2	TYPE A	1,680	178	1,858	33
303	1	3	1	TYPE B	1,075	130	1,205	29
304	1	3	3	TYPE C	2,086	178	2,264	42

Apartment Locator								
UNIT NUMBER	BUILDING	LEVEL	BEDROOMS	UNIT TYPE	AREA SQ.FT	BALCONY SQ.FT	TOTAL AREA	PAGE
305	1	3	3	TYPE C1	2,092	178	2,270	43
306	1	3	3	TYPE A	2,169	289	2,458	40
301	2	3	3	TYPE B	2,226	292	2,518	41
302	2	3	2	TYPE A	1,672	178	1,850	33
303	2	3	2	TYPE C	1,748	81	1,829	39
304	2	3	2	TYPE A	1,679	178	1,857	33
305	2	3	2	TYPE A	1,676	178	1,854	33
306	2	3	3	TYPE C	2,079	178	2,257	42
307	2	3	2	TYPE A	1,631	178	1,859	33
308	2	3	3	TYPE C	2,079	178	2,257	42
309	2	3	2	TYPE A	1,682	178	1,860	33
401	1	4	4	PENTHOUSE	7,566	3,592	11,159	46
401	2	4	3	TYPE B	2,226	292	2,518	41
402	2	4	2	TYPE A	1,672	178	1,850	33
403	2	4	2	TYPE C	1,751	81	1,832	39
404	2	4	2	TYPE A	1,679	178	1,857	33
405	2	4	2	TYPE A	1,679	178	1,857	33
406	2	4	3	TYPE C	2,079	178	2,257	42
407	2	4	2	TYPE A	1,680	178	1,858	33
408	2	4	3	TYPE C	2,079	178	2,257	42
409	2	4	2	TYPE A	1,681	178	1,859	33

meraas.com

Meraas
Dubai, United Arab Emirates
800 MERAAS (800-637227)
NB@Meraas.ae

DISCLAIMER

“Confidentiality and disclosure of information: All of the data, images, plans and information in this document are confidential and no part may be reproduced, distributed, disclosed or communicated to any other third party without our prior written approval. It may only be used for the purposes of determining whether to purchase property as described in this document. **No representation and no liability:** We make no representation or warranty, express or implied that this document or the data, imaged, plans and information contained herein or the assumptions on which they are based are accurate, complete or up to date and they should not be relied upon as such. Any plans, photos, and computer generated images shown are indicative only, subject to change and cannot be guaranteed to represent the complete interiors/exterior of a scheme. Any areas, measurements or distances given are approximate only. We accept no liability for any direct, indirect or consequential loss or damage suffered by any person as a result of relying on all or any part of this document and any liability is expressly disclaimed nor do we accept any liability if this document and the information contained herein is used for an alternative purpose from which it is intended, nor to any third party. **Indicative terms only; no recommendation:** This document contains only preliminary project information. It does not purport to and is not intended to contain all of the information that may be required to evaluate and be relied on in connection with any potential purchase of property or considered as

a recommendation by any person for you to participate in any potential transaction. Any proposed terms in this document are indicative only and remain subject to contract on such terms as directed by us. **No offer:** This document is not an offer or commitment with respect to the sale of property and creates no obligation or liability on us to arrange or sell any property to you and all discussions relating thereto remain strictly subject to contract. **Licensed Trademark:** The scheme and no part of the scheme is owned, developed or sold by Nikki Beach EMEA Hotels and Resorts Limited . No buyer shall have the right to use or have any interest in the Nikki Beach Residences Dubai brand name, trademark or logo and the buyer acknowledges and agrees that it shall have no recourse against PJ Hotel Residential LLC * and/or Nikki Beach EMEA Hotels and Resorts Limited ** in the event that the Nikki Beach Residences Dubai brand name, trademark or logo is withdrawn for any reason. *** PJ Hotel Residential LLC, is a company organized and existing under the laws of Dubai, United Arab Emirates, with its registered office at P.O. Box 123311, Dubai, United Arab Emirates and is the owner and developer of the scheme. ** Nikki Beach EMEA Hotels and Resorts Limited , is a company organized and existing under the laws of Malta”**



