



NEO

CONTENTS

\ INTRODUCTION	3
\ LOCATION	6
\ TEAM	14
\ VISION	24
\ DEVELOPMENT	40
\ SERVICES	52
\ AMENITIES	54
\ NEO BOULEVARD	60
\ LIFESTYLE	68
\ INFORMATION	86

NEO

Rising from the foot of the Cyprian hills, NEO’s four towers embody a meeting point between four distinct landscapes: City, Mountain, Sky and Sea.

Designed and crafted by world-leading developers, architects and engineers, NEO is a prestigious and globally-significant residential landmark set on the Limassol shoreline. With unparalleled views, unprecedented architecture and immersive environment, NEO represents the ethos of Cypriot living at every level.

At the heart of NEO's identity is its connection to Limassol's evolution. With a tradition of warmly welcoming visitors, wanderers and explorers, Limassol is both quintessentially Cyprian and internationally relevant. Cyprus has evolved to become an eastern gateway into Europe, making NEO an investment in community, culture and connectivity.

This unique development unites environment, innovation and local culture. It is defined by an exquisite balance of access to indulgence, and the desire to escape. NEO provides the ultimate luxury: choice. It is both an immersive, cosmopolitan environment and a haven high above it all. NEO offers a curated, modern and forward-looking lifestyle anchored by the sophisticated and historic allure of the Mediterranean.

NEO delivers experiences across many levels: personal and adaptable living spaces — 'Villas in the sky', resort-style podium amenities, access to local culture and finally, connectivity to the Limassol lifestyle — known as 'Lima-Soul'.



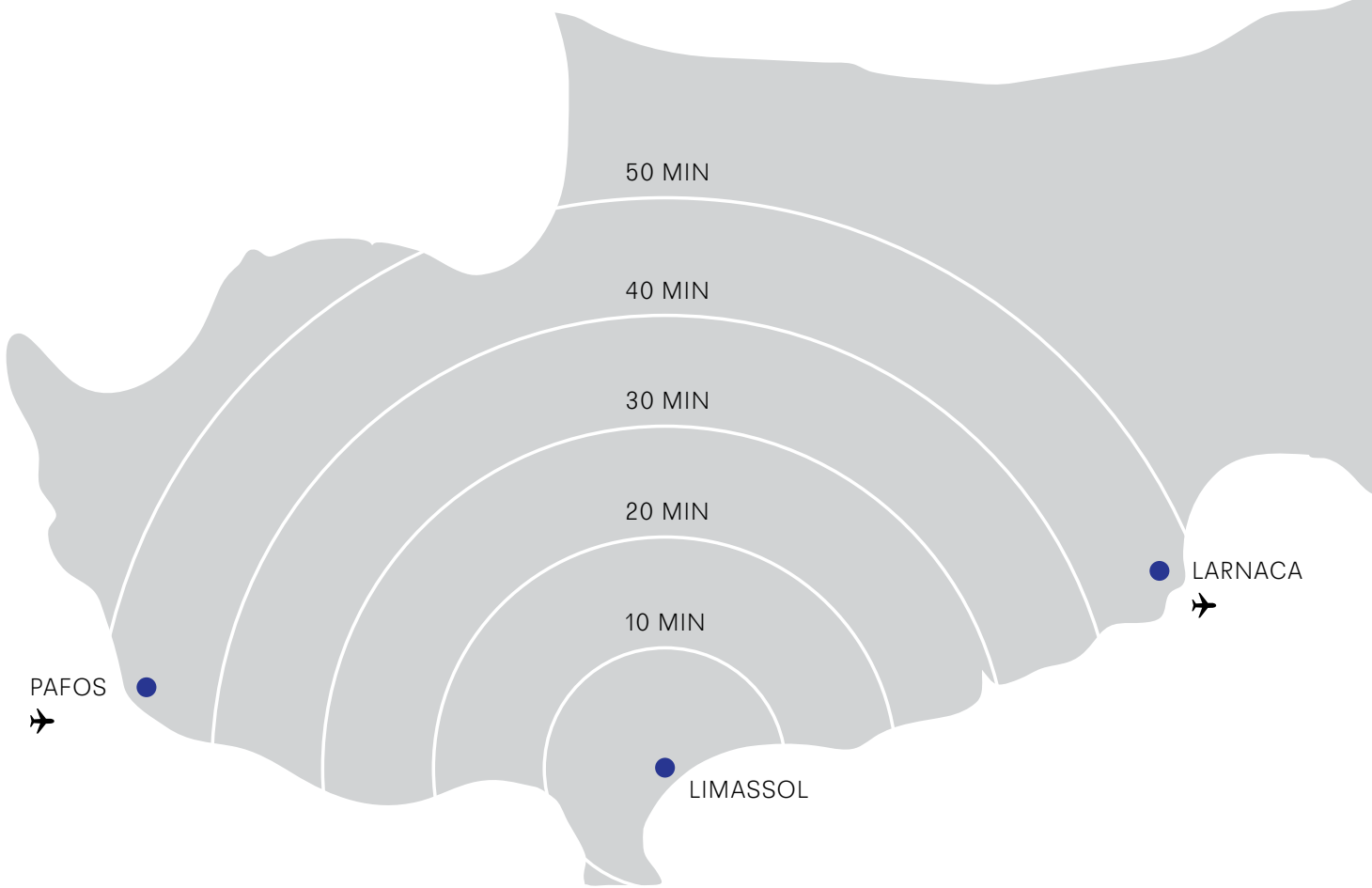
LIMASSOL, CYPRUS

Quintessentially Cyprian. Internationally open-minded. Limassol embodies the romance of the Riviera and the connectivity of a modern city.

Limassol is the second largest town on the island, situated midway between Pafos and Larnaca. It is a place steeped in history and has a unique position as one that combines traditional hillside villages nestled in the surrounding mountains, the famed warm waters of the Mediterranean and a bustling urban metropolis.

A welcoming population with innate acceptance and openness has allowed Limassol to evolve into a natural meeting point between East and West. It is both

a place of retreat and escape, as well as a convenient springboard to international destinations. Limassol remains a city with a proud local culture, with vibrant events and celebrations filling the town's calendar. Infinite sandy beaches and undulating mountains immerse you in the beauty of being outdoors, while historic landmarks and a vibrant culinary culture have created hotspots and hidden treasures loved by residents and visitors alike. All these elements come together to create and celebrate the famous 'soul' of Limassol.





“Infinite sandy beaches and undulating mountains
immerse you in the beauty of being outdoors.”





ON YOUR DOORSTEP

A city of choice. Wash sandy toes in the warm waves on unspoilt beaches. Enjoy the cosmopolitan nature of urban life.

With a shoreline stretching as far as the eye can see, Limassol is not your usual city. 16 kilometres of Blue Flag beachfront framed with clear blue water and golden sand is on your doorstep. This unparalleled location also provides NEO's far-reaching views. The surrounding areas are protected in perpetuity — no future high-rise buildings will interfere with the development's unspoilt vistas from every floor. When you do venture out, the Cypriot island climate offers endless opportunities to be outdoors and revel in a natural paradise: the perfect lifestyle for keeping mind, body and soul in harmony. NEO's boulevard meanders

from the seafront promenade to the garden theatre, creating lively public spaces and interweaving with the surrounding landmarks. The beautiful Botanical Gardens are directly adjacent to NEO, as are the esteemed Archaeological Museum, Folk Art Museum, galleries and the Limassol Library. The famous shopping streets of Anexartisias and Makarios Avenue are 10 minutes away, as are numerous local and international cafés, bars and restaurants. The bustling local boulevard is the perfect place to meet friends day or night, while the streets of the old town, harbour and castle are ripe for exploration and contemplation.



MUNICIPAL OUTDOOR THEATRE



PROMENADE



LIMASSOL BOTANICAL GARDEN



LIMASSOL PUBLIC GALLERY



HISTORIC VILLA





ONE, LIMASSOL

Pafilia

THE DEVELOPERS

World-class lifestyle destinations. Pioneering spirit.
Delivering outstanding quality, concept and design.

Founded in 1977, Pafilia is the largest privately-owned residential developer in Cyprus, dedicated to developing world-class properties for personal living and investment. With uncompromising effort in delivering the best in concept, design, quality and service, the company continues to transform and set the benchmark for the Cyprus real estate sector.

Pafilia has a property portfolio worth over 3 billion Euros, with over 250 developments to its name. The largest share of its property portfolio is spread equally between Pafos and Limassol, and the two burgeoning cities account for 92% of high-value real estate investments in Cyprus.

With a diverse portfolio of prime properties, and notable projects such as One in Limassol and Minthis in Pafos, Pafilia focuses on the creation of innovative yet timeless architecture and developments that provide an unparalleled residential lifestyle. Quality is at the core of everything the company does, from concept to construction, from partnerships to ongoing services.

Each project is built to the highest standards and exemplifies superior living. Pafilia hand-picks partners from acclaimed international architects, engineers and interior designers to form world-class collaborations and create iconic and timeless properties.

MINTHIS, CYPRUS



Pafilia's pioneering spirit is embedded deep in the company culture. With a finger on the pulse of global real estate trends, Pafilia strives to develop ground-breaking projects with proven appreciation, rental returns and resale potential. Pafilia knows that purchasing real estate is based on pragmatic and personal considerations and understands that facilities, services, locations, finishes and detail are signs of both an unparalleled address and a compelling proposition.

The company's decades of experience give privileged understanding of the way people and places entwine. Each project is unique because it is built around these insights. Pafilia's city homes make the most of their connected location, offering access to abundant amenities while providing an oasis of calm for the urban resident. Seafront and countryside properties embrace the natural world, offering a tranquil retreat that celebrates well-being and leisure.

Pafilia's approach to design balances the practical and the aesthetic. The attention is on architecture that maximises indoor and outdoor spaces, as well as incomparable views. Materials and finishes are selected for both their function and inspiration. Equal consideration is given to creating flourishing destinations, evolving communities and enhancing environments. Through a unified and focused strategy, Pafilia continues to engage in initiatives that enrich and strengthen the environment and long-term sustainability of the communities in which it works.

With a legacy of experience, an exceptional track record, clear vision and dedication to its core values, Pafilia continues to spearhead the property industry in Cyprus and beyond.



“Pafilia focuses on the creation of innovative yet timeless architecture and developments that provide an unparalleled residential lifestyle.”

ELIAS ELIADES,
EXECUTIVE PRESIDENT & CEO

BUROHAPPOLD
ENGINEERING

THE ENGINEERS

Combining creativity with technical innovation.
World-class engineering, with unparalleled
experience working in Cyprus.

BuroHappold is an international, integrated engineering consultancy operating in 21 locations worldwide, with 60 partners and over 1,700 employees including some of the world's leading consulting engineers. For over 40 years BuroHappold Engineering has been building a reputation for delivering creative, value led building and city solutions for an ever-changing world.

Noteworthy, award-winning and innovative projects include: The Millennium Dome and the later redevelopment as The O2 in London, The Eden Project Core in Cornwall, London's Olympic Stadium, King Abdulaziz Centre for World Culture (KACWC), Dhahran, Saudi Arabia, the Danish National Opera

House in Copenhagen, Denmark, the High Line Park in New York City, the Europa building, headquarters of the EU Council and the European Council in Brussels and One in Limassol. The Louvre Abu Dhabi and Beijing Daxing International Airport are among their most notable projects.

Striving to always think imaginatively and inventively about building structures and their environment, BuroHappold has a holistic view of the design engineering experience. For NEO, the team evaluated the opportunities and constraints of the site and advised construction methods that both integrated into the design vision and produced a project of lasting value.



THE LOUVRE ABU DHABI



THE LANDSCAPE ARCHITECTS

“Every garden is unique and each project has a life of its own but they tend to follow similar journeys.”

Andy Sturgeon is one of the industry's leading garden designers. His modern designs are a fusion of traditional materials and contemporary styling which have become known for their timeless architectural qualities, innovative planting and sculptural characteristics. Commissions range from private roof gardens to interesting and iconic commercial projects including public spaces and country estates all over the UK with international projects in Russia, Hong Kong, Rwanda, Europe and the Middle East.

Andy's landscape architecture and garden design consultancy offers a comprehensive service worldwide. Established in 1988, the practice encompasses a wide-ranging set of skills and expertise to produce innovative and sustainable solutions for private, commercial and international clients, such as Homantin Hillside in Hong Kong or Beningbrough Hall in York. Founded on a passion for design excellence and meticulous attention to detail, the company's work ranges from the classical to the contemporary, often working in partnership with other professionals to deliver integrated, cohesive solutions.



CHELSEA FLOWER SHOW 2016,
BEST IN SHOW & GOLD MEDAL

THE PARTNERS

Selected consultants, all with local knowledge and expertise, were chosen to ensure NEO's design and development had a lasting legacy.

eraclis papachristou architects

Eraclis Papachristou Architects is an award-winning practice with extensive experience in providing the full suite of architectural services from design to completion. The practice was founded in 1998 by Eraclis Papachristou and since then has worked on a wide range of projects including private residences, public buildings and urban developments.

The practice participates in international architectural competitions to shape and evolve its architectural language, adapting to ever-changing social and environmental needs. Today, Eraclis Papachristou Architects is one of the most respected architectural practices in Cyprus, known for its experimental exploration into new construction methods and innovative design.

Georghiou & Zembylas Partners

MECHANICAL & ELECTRICAL ENGINEERING CONSULTANTS

Georghiou & Zembylas Partners is a leading engineering organisation delivering innovative, high quality sustainable designs. A team of professional, knowledgeable and highly-skilled engineers work closely to fulfil client goals and expectations. The company also leads local and international seminars, predominantly on new and sustainable technologies as well as innovative engineering software and hardware.

Formed in 2006, today the Nicosia-based company employs qualified and experienced professionals of various disciplines; Mechanical Engineers, Electrical Engineers, Lighting Designers, EPC Qualified Experts, accredited Energy Auditors and Inspectors. Georghiou & Zembylas Partners believes that tailor-made designs with day-to-day liaison is the key to creating cost-effective, energy saving and environmentally friendly engineering solutions.

ioannides acoustics

Ioannides Acoustics provides acoustic solutions for room acoustics, noise control, sound insulation and sound systems, to obtain crisp clear sound distribution and the reduction of unwanted noise inside and outside buildings. The company is built on the expertise of acoustic and sound system design, with extensive experience in Cyprus and abroad. Acoustic consulting services are undertaken in collaboration with architects and engineers to provide tailored solutions for a variety of projects.



MARINOS N. PANAYIOTIDES

Following experience in the British and Cypriot Construction Industry, **Marinos N. Panayiotides launched his practice as Chartered Quantity Surveyor** in 2000. The practice's philosophy has always been to provide a range of the highest quality professional services to ensure the clients' financial and contractual objectives are achieved. This philosophy is followed, and thoroughly supported by, the strong

relationships formed with local authorities, architectural and engineering practices, law and accountancy firms. The company prides itself on the personal attention to detail in line with client philosophy and vision for the project. Marinos N. Panayiotides has been involved in some of the largest and most prestigious projects on the island over the past 19 years.

P. PAPADOPOULOS AND ASSOCIATES CONSULTING

Specialising in civil, environmental, structural and foundation engineering, the consultancy has been responsible for the design, site inspection and management of a variety of projects including roads, bridges, hotels, industrial, commercial and residential buildings. The practice was established in 1989 and today has a hand-picked number of associates, each with an active role in the design and direction of each project.

Within strict professional limits and in close collaboration with other members of the design team, the firm achieves clients' needs with elegance, economy, and innovative engineering. The company provides expertise in structural dynamics and earthquake resistant design as well as dynamic soil-structure interaction including base-isolation systems, underground structures and foundations for vibrating machinery.



THE ARCHITECTS

SAHMRI RESEARCH CENTRE,
ADELAIDE



Woods Bagot is a world-renowned People Architecture company invested in global communities & local culture.

Woods Bagot places human experience at the centre of the design process in order to deliver engaging, future-oriented projects that respond to the way people actually use space. They do this as a global design and consulting studio with a team of over 850 experts working across 15 studios in Australia, Asia, Europe, the Middle East and North America.

The Global Studio model allows the company to work collaboratively across time zones and borders, using the latest technology to share design intelligence and strengthen its knowledge base around the world. Woods Bagot’s design expertise is underpinned by highly collaborative leaders who span sectors, disciplines, and global markets, directing dynamic design teams to deliver People Architecture.



EMIRATES TOWERS, DUBAI

Woods Bagot’s design approach as architects and interior designers was to create an exceptional lifestyle-led hub punctuated by ‘Villas in the sky’ that capture the essence of the unique location.

Notable projects include the Internet Innovation Centre in Beijing, Hotel Kempinski in Oman, Commercial Bay in Auckland, the CFA Institute in New York, 888 Collins Street in Melbourne, the Qatar Science and Technology Park, the Hong Kong University of Science and Technology, Minthis in Cyprus, the Emirates Towers in Dubai and Sincere Plaza in Shanghai.

Woods Bagot’s attitude towards architecture and interiors creates distinctive residential, hotel, retail and hospitality destinations that make a clear statement about the future of how people live, work and play.

This design approach results in exceptional properties which capture the essence of their environment and create memorable experiences unique to culture and context. To that end, it is the goal of Woods Bagot to understand key design principles, materials, scale, and form of the site and respond with an appropriate building. In this way, the architecture treats the users with respect and honesty. Woods Bagot brings total lifestyle experience to influence various Pafilia projects. Together with Pafilia, Woods Bagot is redefining the Mediterranean resort experience through design and development.

CONVENTION CENTRE,
ADELAIDE



INTERVIEW

Nik Karalis, CEO of Woods Bagot architects and Rob Steul, lead design consultant for NEO, talk on how this innovative new development connects the elements of Limassol and how it borrows from tradition and the surrounding environment.



NIK KARALIS



ROB STEUL

The NEO philosophy is to embody a lifestyle, rather than just a residence. How is this philosophy reflected in the design?

NIK KARALIS “The Cypriot climate is the perfect base to create a liberated and reborn lifestyle. Our design philosophy enables the purchasers to enjoy both a private and communal serenity. The outside inwards living of each apartment is seamless with sweeping balconies that maximise the seaside location for every residence. The fluid podium designed across several levels allows for both pampering retreat and exposure to traditional landscape micro-climates and various wellness activities.

The entire journey from arrival to retreat is carefully curated to ensure a sense of maximum comfort and attention to every detail, your sense of a new home and a better NEW or NEO life extends beyond your individual apartment, into the overall neighbourhood and everything you experience on the softened and sensitive development. It will be more than another home — it will be your new life.”

ROB STEUL “I have been working with Pafilia for 15 years and their aspiration with every building they create is to create a community rather than just selling houses. New residents are buying a ‘piece of the Limassol community’ not just another high-rise residence. These buyers are at the heart of a new and emerging Limassol. A marker for this new Limassol was needed on the promenade, the anchor point of the new ‘city on the sea’, Pafilia are that flagpole and making that statement with NEO.”

The residences have been described in planning as ‘Villas in the sky’ — what aspects of traditional Mediterranean living have you brought into the design?

NK “The Villas in the sky are engulfed in a sweeping fluid balcony. The main features of each residence and tower are these layered bands or rings with natural screens and

timber ceilings that soften the interface to the view. They act like infinity lenses. The subdued and sophisticated volumes within these lenses are the Villas themselves, each with many dual or triple aspects to allow regular individualised furniture placements and corner cross-flow ventilation. The spaces from outside to inside are seamless with an extending floor surface and vertical shades carefully placed to create a dappled and softened light. This is not a series of single towers, but layers of Villas in the sky, each individually crafted to your taste.”

RS “Yes, the apartment you are purchasing is yours but what you are also buying into is a community. Shared amenities like pools and at ground level with the bars, restaurants and clubs offer a balance between the privacy of your own home and the interaction of the community you are living in alongside your neighbours. The exteriors and interior space have been designed in equal proportions and this is critical to buyers who want to enjoy the outdoor living lifestyle. Ceramics and stone are a traditional material for the region — they reflect sunlight and give the sense of being in a house or a villa instead of a tall building, while the use of timber gives a feeling of warmth.”

How are the NEO residences connected to, and respectful of, the natural environment around them?

NK “Surrounded by the adjacent botanical gardens and offset by the distant mountain ranges. The site is perfect for unobstructed long vistas along the coastline in each direction and across the city with its evening twinkling lights. To extend the local landscape we have carefully crafted the podium to reflect very specific indigenous plants species that creates a tropical Mediterranean experience — you will be living amongst a fertile natural garden. This softens the impact of the project and links it to its surrounding coastal ecosystem. This is all further enhanced with surrounding blue natural lagoons.

“This is not a series of single towers, but layers of Villas in the sky, each individually crafted to your taste.”

Each tower becomes its own island and all link to the beach by the overpass bridge. The lagoons feature infinity edges that visually bring the coastline right up to your doorstep while elevated above the passers-by. Serenity, sun and sensuality, all for your enjoyment and transformation every time you connect with NEO.”

RS “NEO is, of course, an urban development and powerfully connected to the urban landscape of Limassol. The residences are connected to the environment primarily through their balconies and the ‘long views’ provided across the bay towards the peninsula, out to sea and towards the mountains. Up close, the garden on the podium roof is connected visually to the public gardens to create a natural interaction between the spaces, and at pool level the greenery merges seamlessly to double the size of the public gardens. A public park has been designed along the north side, and the boulevard meanders from the promenade, linking the city to the sea.”

How did the location influence the approach to the architecture?

NK “There are two main materials that were inspired by the local vernacular architecture to ensure that our project fits comfortably with the overall city grain setting. A combination of local limestone colouration and natural forest timbers will create an overall subtle blend and tonality. They are captured in the balcony rings which create overhang shade and in the filtered

louvres and external ceilings. These are not towers but fluid concentric rings which are in scale with the urban grain and context. Even as the numerous towers begin to change the skyline, NEO will be sympathetic to its locale and appear to blend in harmoniously in a contemporary style and respond to the sublime weather.”

RS “Limassol is urban, and going through an evolution, so Pafilia wanted to contribute to that development. We had to consider how we mediate the scale of the building, which is much taller than the traditional buildings that surround it. RIVA at the front stands as the tallest tower and strengthens the marker point on the seafront, then the towers gradually step down in height as the development gets closer back towards the city, to fit in line with the buildings around it.”

What does the concept of the ‘podium’ and NEO’s community spaces borrow from the famous ‘Lima-Soul’ lifestyle?

NK “Historically the Limassol waterfront was an exciting market place of activity connecting it to its neighbouring exotic countries. The romance of this Riviera existence is reawakened at the base of the development with the public boulevard, retail, eateries and drop-off areas creating the nostalgia and excitement of an active waterfront. NEO will be our new gateway into both the historic city and a marker for the ever-changing quality waterfront. The perfect new spiritual soul of the city, we call it “Lima-Soul”.

RS “When you come to Limassol you become part of a big family, whether this is attending a birthday party to a business meeting. Pafilia wanted to create areas that captured and supported this Cypriot lifestyle and interaction with layers of shared spaces — whether that is with the family or a business meeting.”

How did the chosen materials bring NEO to life? How do they reflect the modern NEO and historical Limassol culture?

NK “Every material in the project is selected appropriately for its vernacular quality — local timbers, quality muted marbles and limestone create an overall calming palette that allows every resident to customise their own private furnishings further, enhancing their new life and personality. NEO will be a unique place, one that by association will automatically elevate one’s status as an elite connoisseur of everything special that life has to offer.”

RS “There are a lot of high-rise residential towers around the world. What sets NEO apart is the use of traditional materials like clay tiles and timber ceilings that give this property unique characteristics and personality. You can see this through the ‘fifth façade’ — as you look up at the whole building from ground level at night, the timber creates a warm orange glow on the veranda ceilings. This terracotta light and warmth feels both traditional but also suited to a modern and dynamic building.”

STUDY SKETCHES



NEO PROJECT: PUBLIC BOULEVARD, PARK EXTENSION & RETAIL PODIUM WITH POOLS



NEO PROJECT: NORTH PUBLIC PARKING STRUCTURE & NATURAL GARDEN



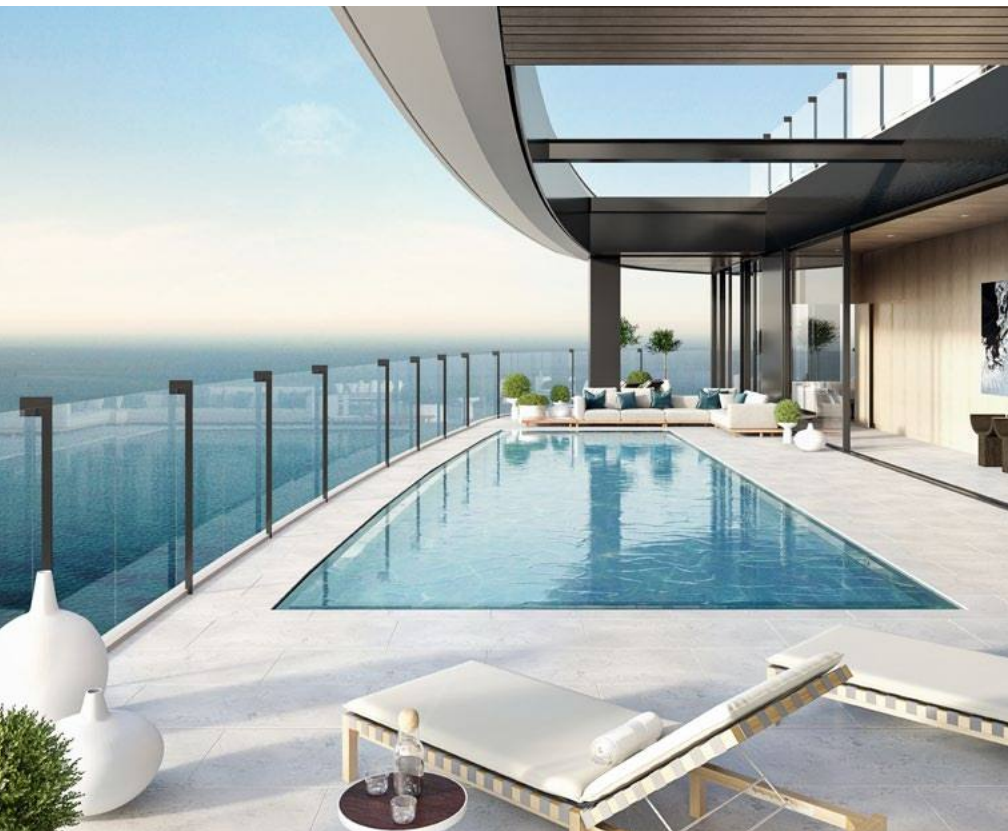
NEO PROJECT: LIBRARY & GALLERY CORNER

DESIGN & MATERIALS

The NEO design philosophy centres on the inside/out, anchored by the finest materials, innovative design and unique offering.

Together with Pafilia, Woods Bagot is redefining the Mediterranean resort experience through design and development. NEO was devised from the energy of the surroundings: inspired by the abundant natural beauty and epitomising the lifestyle that all Cypriots and visitors enjoy when they come to the island.

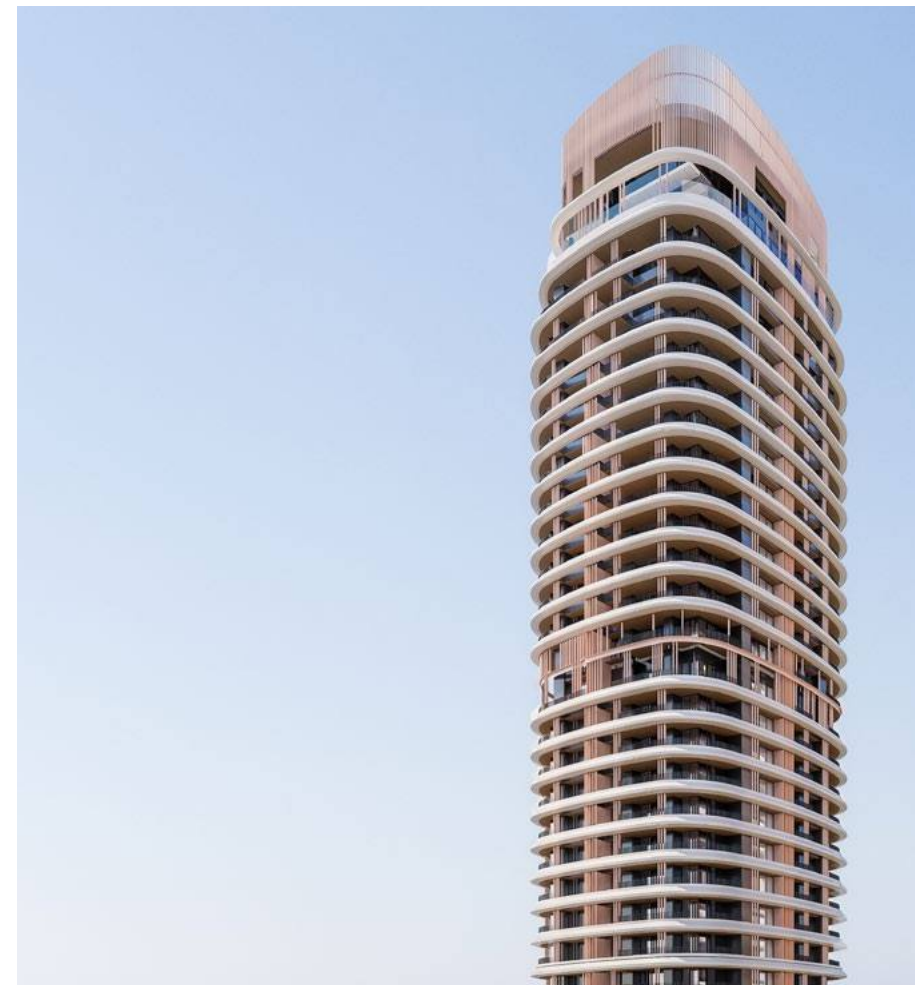
NEO delivers experiences across three levels: personal and adaptable living spaces, resort-style podium amenities, community and culture and finally, connectivity to the Limassol lifestyle.

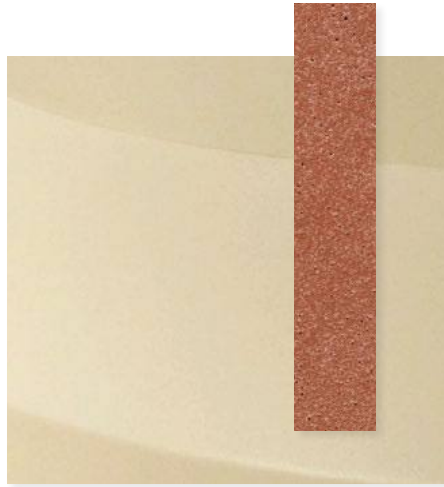


The connections between inside and out are at the heart of NEO's residential DNA.

People live their lives through personal, curated moments enriched by the environment around them. NEO is designed from the inside-out: looking closely at the nature of human experiences and how people live, work, relax and play. Luxurious space, and the connections between spaces, are a key focus of the NEO residences— creating private sanctuaries that also respect and interplay with the beautiful surroundings and proximity to the sea.

The connections between inside and out are at the heart of NEO's residential DNA. Interior living blends into exterior, all finished to the highest standard and specification, allowing for a sensorial transition of light, space and air. Elegant overhanging elements frame the views while providing necessary shade and protection at higher elevations. This balance and interplay between shade and sun delivers a sustainable environment to each building at NEO.





METAL PROFILES & TERRACOTTA FINS

\ THE FAÇADE

NEO's materiality, colours and views are distinctly Mediterranean. A warm orange glow is created by a palette of materials similar to a traditional house, but applied to a high rise. The towers' innovative curved design provides long views from large balconies, connecting the city to the sea.

\ CANTILEVER

Gracious cantilever terraces frame each residence's views while providing necessary shade to enjoy an outdoor lifestyle of relaxing and entertaining.



\ THE CROWNS

The terracotta baguettes, inspired by the natural Cypriot environment, form a crown around the top of each tower, appearing as if to disappear elegantly into the sky. This approach also protects the views of the apartments at the top of each tower, a key detail for those wanting an unspoilt panorama from the Sky Penthouses.



\ FINS

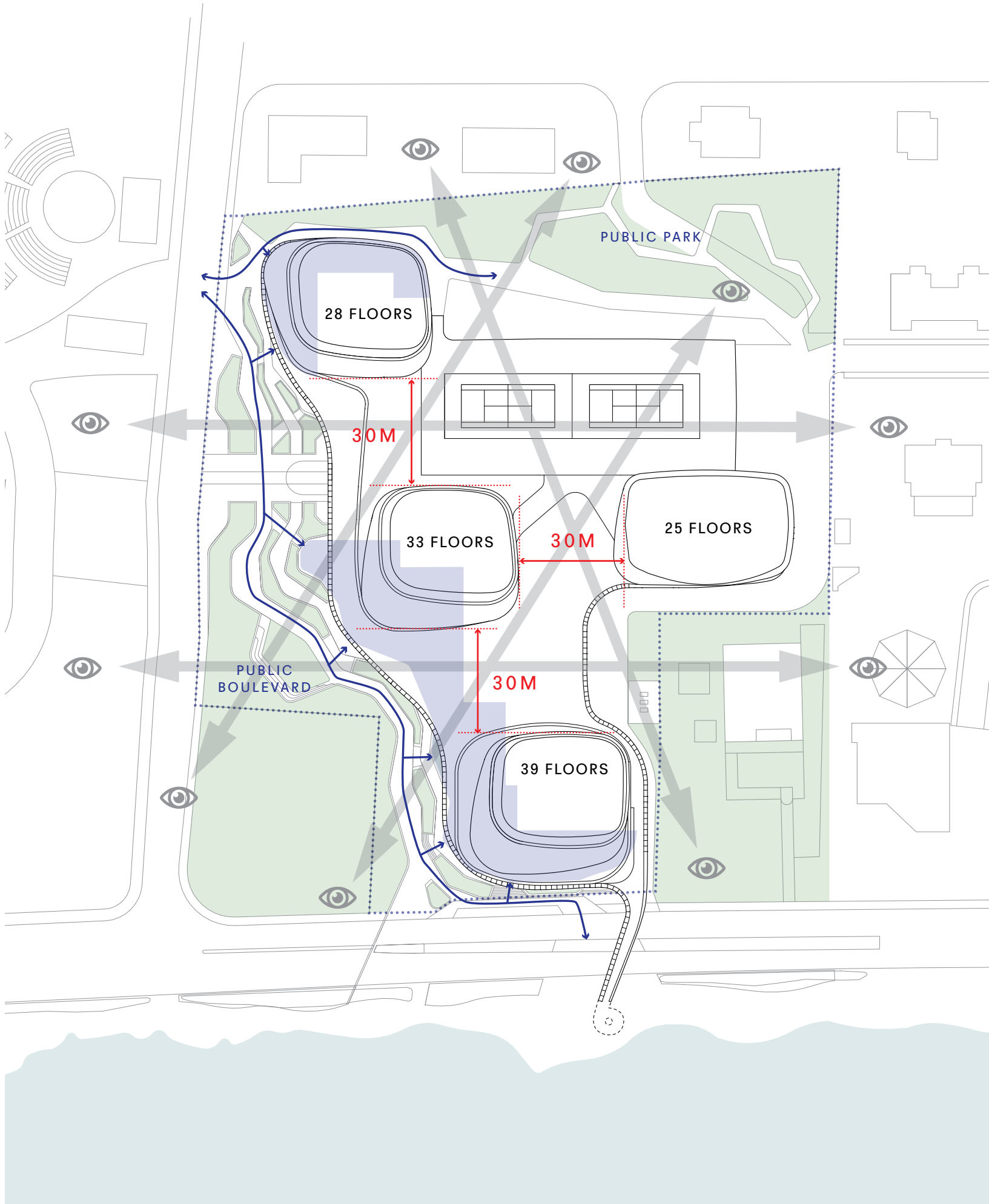
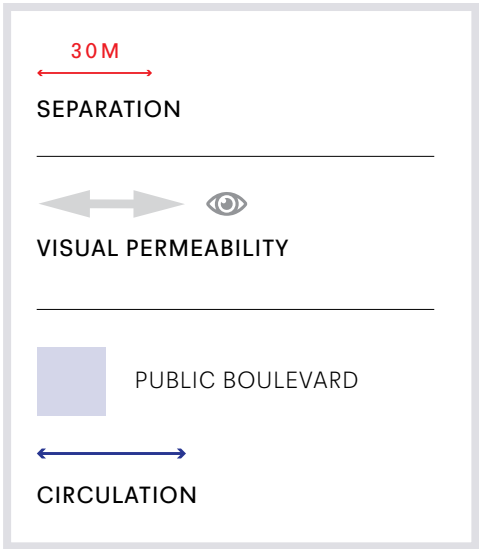
The fins bring the warm terracotta roof materials into the façade; they are deliberately elongated to create unique sun screens which create shadow lines across the veranda for natural shade.

A NEW NEIGHBOURHOOD

The flow of daily life. A new landmark, creating connections and encouraging a sense of community.

A sense of immersion and connectivity is at the heart of NEO's design and engineering. There is no visual separation between NEO and the public space surrounding it, encouraging an overall sense of togetherness. Every aspect of the master-plan has been conceived to contribute to the 'Lima-Soul' lifestyle, designed for both residents and the community to enjoy.

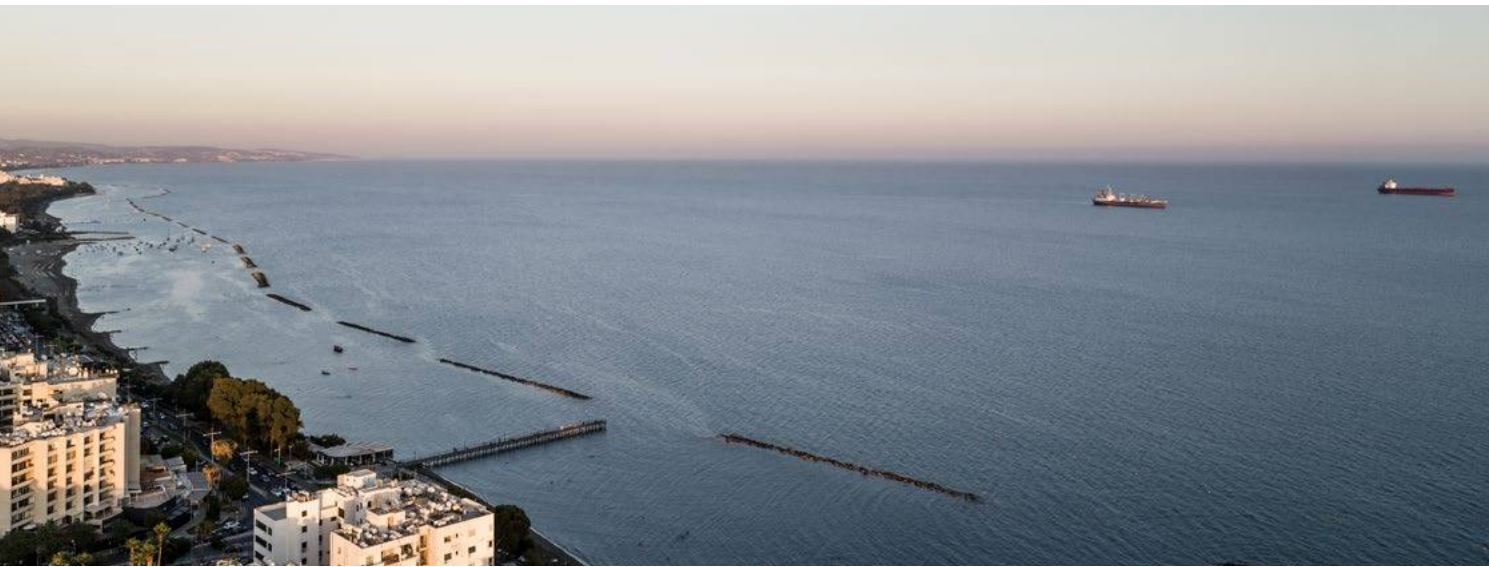
Immersion in the surroundings and a natural flow across the site, with meandering avenues linking the retail boulevard to the gardens on one side, and the beachfront on another, are key to NEO's success as a destination. The local neighbourhood has been woven into the site design, including linking in the adjoining botanical gardens and amphitheatre and creating ease of access for residents and the general public to move naturally around the site. These elements serve to improve both the residents' experience and the relationships with the local community — improving the offering of the area and reinforcing NEO as part of the architectural fabric of Limassol — a new landmark for the city.



VIEWS

Intelligent, curving architecture connects
the sea, city and mountains.

With a shoreline stretching as far as the eye can see, Limassol is not your usual city. NEO's incomparable location puts it on the doorstep of clear blue waters and golden sands, adjacent to Limassol's botanical gardens, cultural theatre and gallery. The Cypriot island climate and NEO's innovative design offers endless opportunities to be outdoors and revel in a natural paradise and far-reaching wide-angle views: the perfect lifestyle for keeping mind, body and soul in harmony.



FROM TYPE A, DAWN



FROM TYPE B, DAWN



FROM TYPE C1, MID-DAY



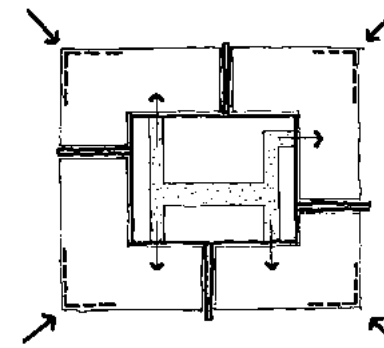
FROM TYPE D, SUNSET

SPACE & FLOW

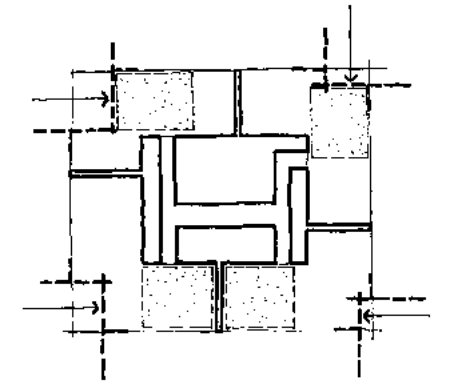


Optimal linear living spaces have been created through a pin-wheel design. The curvature of the towers is achieved through deep terraces which provide expansive outdoor living area and cantilever shading.

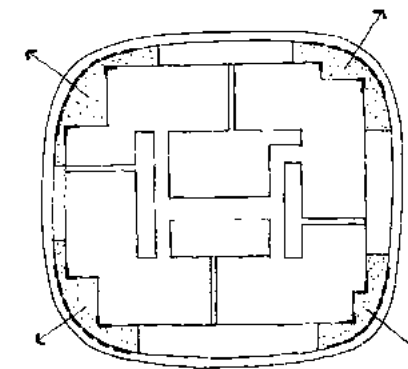
The design is highly logical for furnishing and provides ideal flow of living space. It optimises views and ensures total privacy. It creates 'Villas in the sky'.



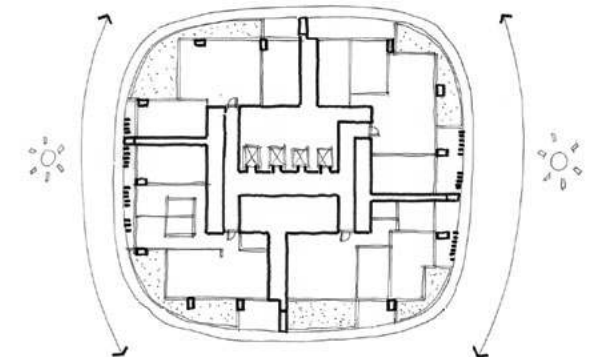
1. PIN-WHEEL PLAN ROTATION
AROUND CENTRAL CORE



2. ORIENT LIVING ROOMS AND ADJACENT
BALCONIES TO PRIME VIEWS

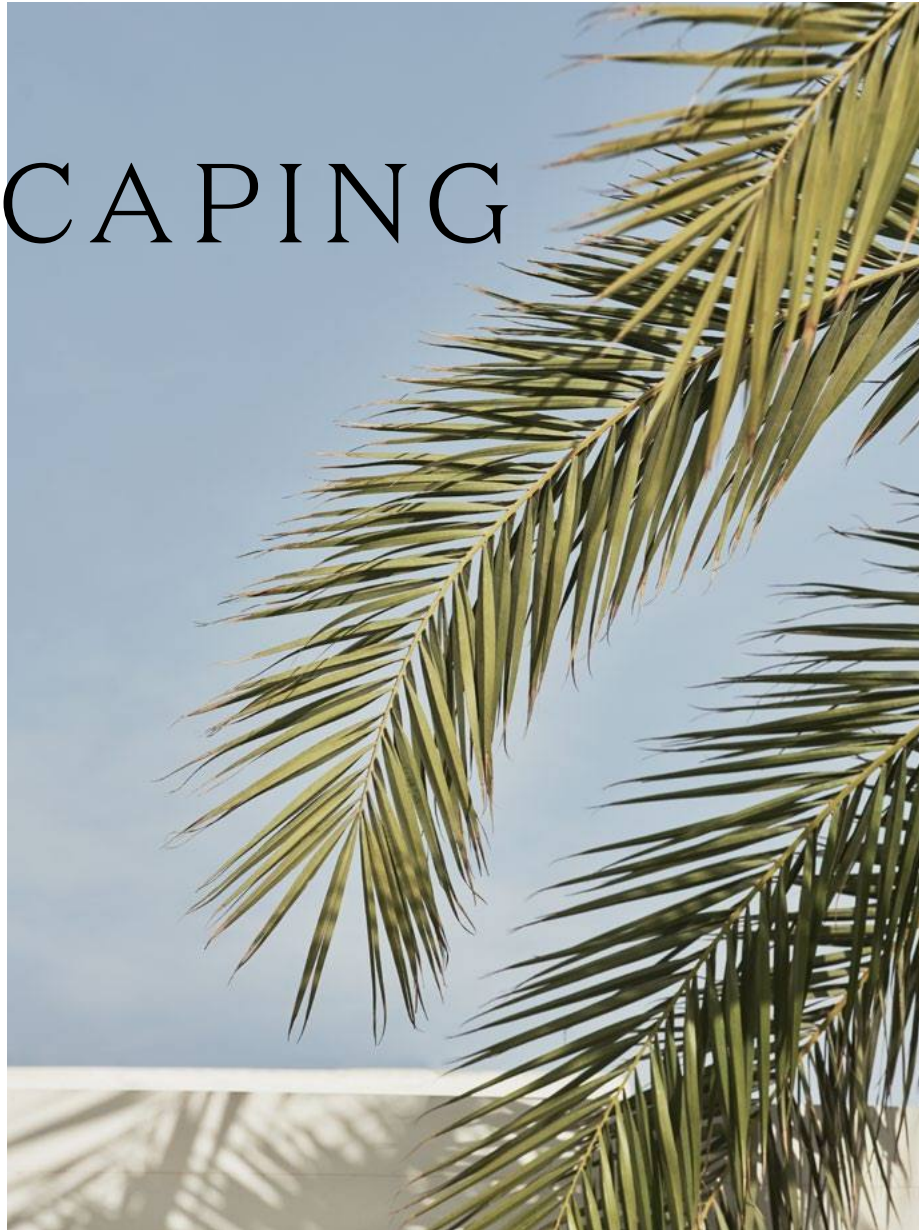


3. ROUND CORNERS TO MAXIMIZE VIEWS
AND SOFTEN TOWER IN TOWNSCAPE



4. ADD SOLAR SHADING TO EAST
AND WEST SIDE OF TOWER

LANDSCAPING



Borrowing elements from nature and the local environment, evolving upwards towards the sky.

Landscape and garden designer Andy Sturgeon designed a green master-plan, working with a palette of refined materials and colours to create spaces that have distinct and unique characters. In the sky, roof gardens feature plants that change with altitude, native Cypriot species and replanted olives and old pines that complement the views out over the extensive Botanical Gardens and out to sea.

Poolside, tranquillity is focused on the water — the family pool is the longest infinity pool in Cyprus and has infinity views across

the park and out to the Mediterranean. A lush oasis comes to life via richly-planted and exotic gardens that frame the space — designed for discovery. For outdoor dining, dappled shade is created by fruit trees, and scented herb plants add to the sensorial experience. For the bustling energy of the boulevard, the backdrop borrows from the surrounding coastal environment, with native pines, juniper, rosemary and sage contrasted yet complemented by limestone, basalt and granite in a variety of rich, warm colours.



\ PODIUM POOLS



\ LANDSCAPING
AT KIDS POOL

LANDSCAPE COLOUR PALETTE STRATEGY

\ FAMILY POOL A RICHLY PLANTED & EXOTIC GARDEN FOR DISCOVERY & EXPERIENCE



\ SECLUDED POOL EDITED PLANTING TO MAINTAIN A SERENE ENVIRONMENT



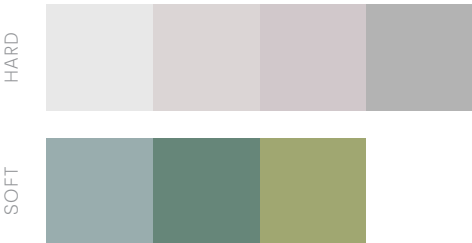
\ BOULEVARD BACKDROP TO POOLS & COASTAL INSPIRED / NATIVE PINES, OLIVES & JUNIPER TREES, ROSEMARY, SAGE & HERB PLANTS



\ NATURAL PARK NATIVE CYPRIOT LANDSCAPE WITH WILDFLOWERS, SCRUB & LAWN



\ ROOF GARDENS CYPRUS MOUNTAINS INSPIRED, REPLANTED OLIVES & OLD PINES / SOFT GRASSES & WIND TOLERANT SHRUBS



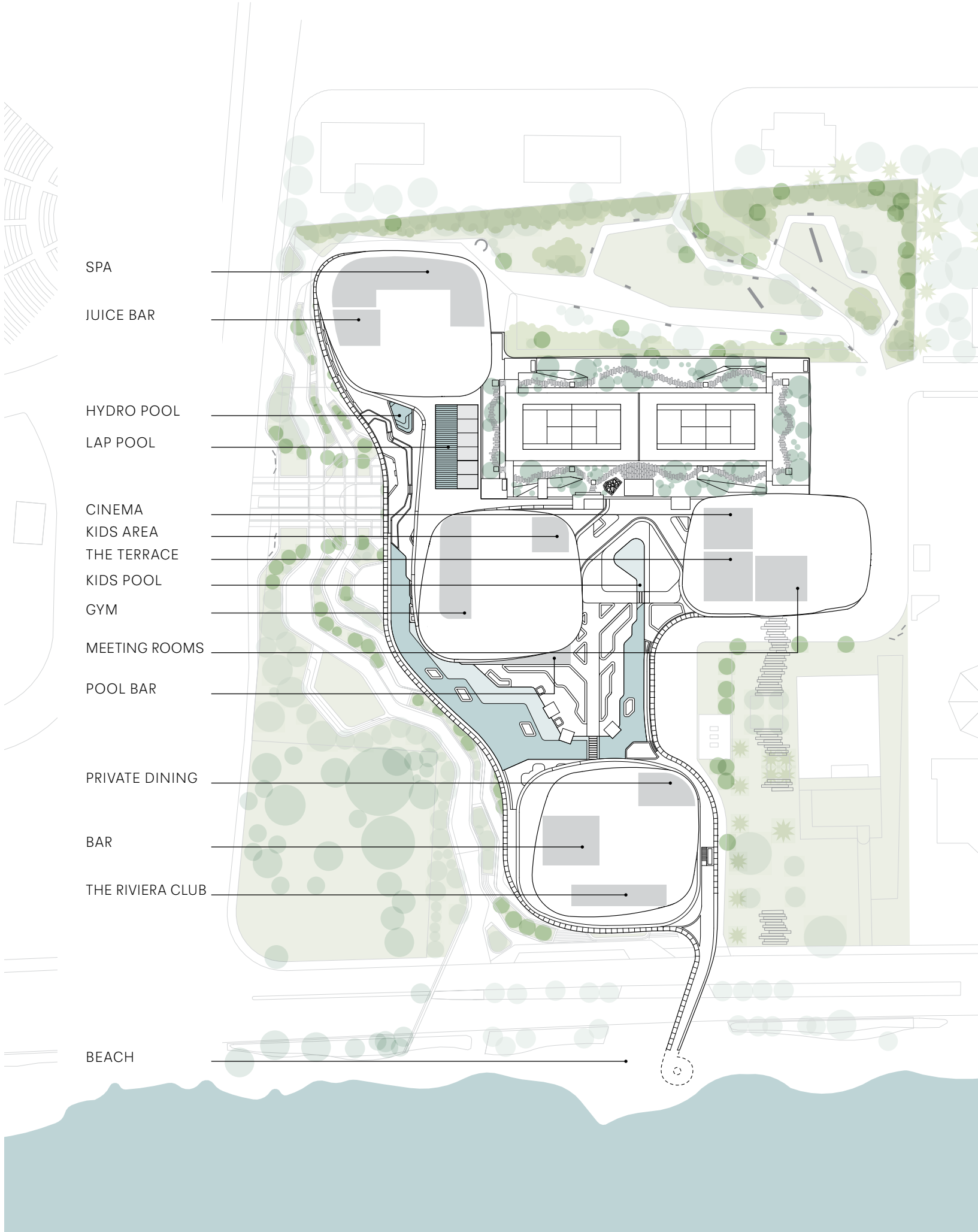
THE PODIUM

A curated, modern and forward-looking lifestyle anchored by the sophisticated and historic allure of the Mediterranean.

NEO's four buildings rise from the heart of The Podium: a hub designed to offer residents moments of relaxation, activity, entertainment and wellness. Located at the heart of the development, The Podium contains NEO's six-star facilities, access to the Riviera Club restaurant and the residents' private connection bridge over to the beach club.

The Podium Pool Bar encapsulates the buzzing soul of Limassol, for private use of residents and their guests. The Riviera

Club restaurant offers fine dining cuisine from Europe's leading cities, and a cinema allows residents access to private screenings on their doorstep. A luxurious spa and wellness centre is designed for restorative contemplation, and a state-of-the-art gym offers space and technology for bespoke workouts, either alone or with a personal trainer. The Podium embodies the Riviera lifestyle, from your morning swim, to an afternoon at the beach and evening drinks, it is the place to create your own stories and find your place.





THE SPELL,
ONCE IT
CASTS
ITS
SPELL,

HOLDS
ONE IN
ITS NET
OF
WONDER



NEO

Balanced at the edge of the sea and sitting in harmony with its surroundings, NEO is more than a residence. It is a place waiting to be defined by your unique life and style.

NEO DEVELOPMENT
PHASE 2

AMIA

AMIA is the closest tower for quick and easy access to the city. Views from its Sky Villas look across the natural park and out into the mountains. As home to the Wellness Spa, AMIA is the well-being hub for relaxation and contemplation.

2 BEDS: 20
3 BEDS: 56
DUPLEX: 2
HALF FLOORS: 2
PENTHOUSE: 1

UNA

UNA is the epicentre of entertainment: its residences sit above the cinema at podium level. UNA's views take in Limassol's breathtaking coastline, with views stretching down to the sea.

2 BEDS: 14
3 BEDS: 30
DUPLEX: 4
HALF FLOORS: 2
PENTHOUSE: 1

KAIA

KAIA is the most central tower, providing residents with the premium address for all lifestyle amenities. Complemented by unobstructed sea, garden, bay views and washes of sun, KAIA also takes advantage of its close proximity and direct access to the fitness suite and residents' main lobby.

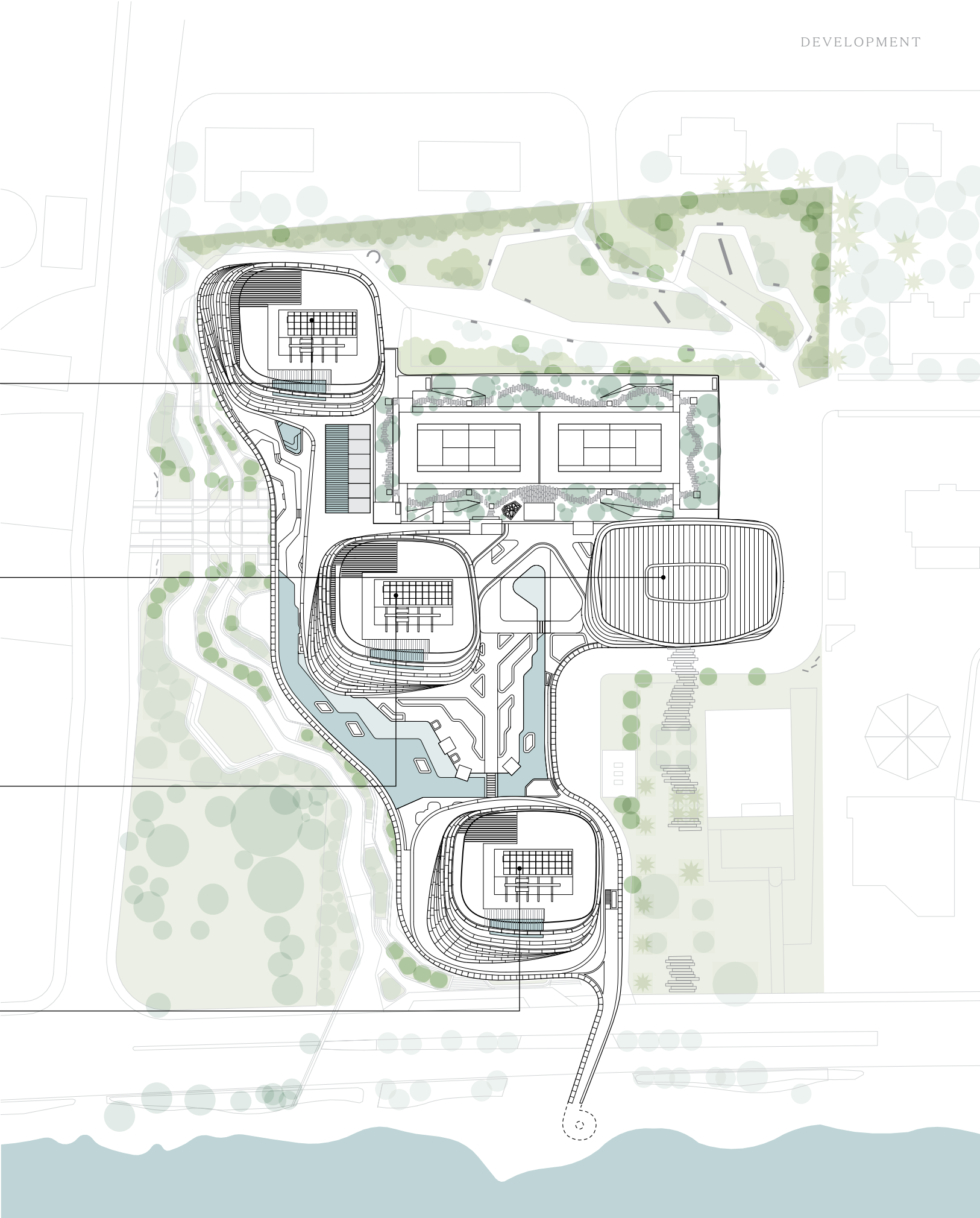
2 BEDS: 49
3 BEDS: 46
DUPLEX: 2
HALF FLOORS: 2
PENTHOUSE: 1

NEO DEVELOPMENT
PHASE 1

RIVA

As the southernmost tower, RIVA, situated at the waterfront, provides residents with a full panoramic experience, with uninterrupted views to the sea. RIVA is also the place to welcome guests in the residents' restaurant and bars, and is located right next to the private connection to the beach.

2 BEDS: 29
3 BEDS: 85
DUPLEX: 2
HALF FLOORS: 4
PENTHOUSE: 1

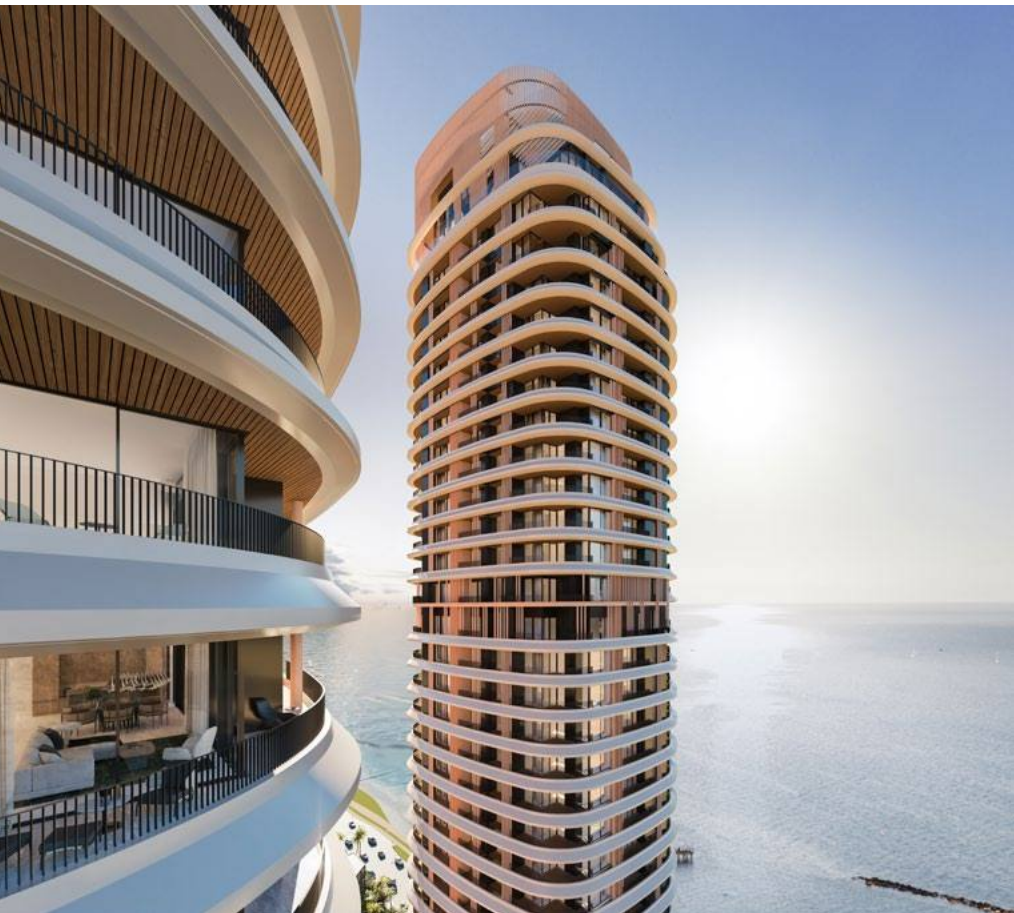


\ POOL AREA
BETWEEN RIVA & KAIA

A space for discovery. A lush oasis framing
the swimming pools, with space to relax
and unwind.



“NEO’s elegant pools enhance the importance of
water and the surrounding sea to NEO’s DNA.”



\ KAIA & RIVA

Up in the sky, the towers become personal
sanctuaries, imbued with the Mediterranean
indoor/outdoor lifestyle.

\ PODIUM & BOULEVARD
FROM LEFT TO RIGHT: KAIA, UNA, RIVA





\ ENTRANCE
TO RESIDENTS PARKING

The Boulevard creates a sense of community between NEO and its surroundings. Food, drink and retail spaces will encourage a thriving atmosphere and opportunities to connect.

“NEO is a new landmark and destination for Limassol.
A modern way of living, balanced with the warmth
and charm of Cypriot city life.”

\ NEO,
VIEW FROM THE EAST

NEO's contemporary towers have been designed to sit in harmony with its surroundings. Balanced at the edge of the sea and evolving upwards towards the sky.



\ SKY VILLA VERANDA



SKY VILLAS

Surrounded by light and breeze.
Imbued with Mediterranean character.

RIVA's Sky Villas were deliberately and thoughtfully designed to ensure a true inside/out experience, embodying the traditional Cypriot way of life. Dual aspect, with views out to sea, across the neighbouring gardens and towards the mountains in the distance, Sky Villas balance the peace and sanctuary of your private space with the connectivity of NEO's lifestyle hub below.

High ceilings and a generous open plan layout accentuates the light and creates a natural pace between the interior and exterior spaces. The materials and finishes are anchored from a palette of calm neutrals — porcelain tiles and timber floors with cool marbles, satin lacquer and polished nickel — accented by bespoke design elements such as full-height wardrobe doors for a walk-in feel, ambient lighting solutions, oversized freestanding bath tubs and blind and drape technology systems.

\ TYPE A LIVING ROOM



\ TYPE A MASTER BEDROOM



SKY RESIDENCES

Spaces to relax. Areas to entertain.
A place to just be. Framed by Limassol and the sea.

Sky Residences were intelligently designed to balance personal privacy with generous, multi-faceted areas to entertain and socialise. Large living areas offer dual aspect views, separate but visually connected kitchens and dedicated dining areas become central hubs. Bedrooms have additional aspects with walk-in wardrobes and spacious bathrooms with luxurious, high-spec furniture and finishes.

\ KITCHEN



\ LIVING ROOM



\ SKY PENTHOUSE MASTER BEDROOM



SKY PENTHOUSES

Your sanctuary in the sky. Uninterrupted views, panoramic living.
The ultimate embodiment of the inside/out design.

NEO's design vision is clearly defined in the RIVA and KAIA Sky Penthouses. Extensive terraces curve around the multi-aspect apartment, some with double-height spaces. An outdoor kitchen and multiple dining areas reflect the Mediterranean tradition of preparing and eating outside, while the importance of water to the NEO philosophy is brought up into the sky with a private pool and Jacuzzi deck seemingly

separated by nothing from the surrounding sea. Inside, dramatic and elegant staircases are a feature backdrop to undulating living and dining spaces. The master bedroom and bathroom form their own 'suite within a suite', including a sumptuously-appointed marble bathroom with contemporary free-standing bath and a wall of windows to bring indoor/outdoor harmony to your personal retreat.

PREMIUM HOSPITALITY

\ FRONT DESK



Six-star service, personal assistance, bespoke attention.
Curated living designed for dynamic, modern lives.

NEO is your home, but it comes complete with hotel-style full-service concierge. Day-to-day assistance is offered with housekeeping, cleaning, laundry and dry-cleaning services as well as babysitting, repair and maintenance and appointment booking and management. NEO's lifestyle team go one step further, answering personal requests such as flower or gift deliveries, arranging private tuition or health and fitness appointments, making reservations for restaurants or the spa

and can even look after regular grocery deliveries or kitchen-stocking on request.

Limassol is rich with local attractions, excellent restaurants and excursions to historical sights. The team can tailor events and bookings to suit you or your guests, such as boat trips, sightseeing, private events or tickets to a show. They will also arrange travel, hotels, car hire and transfers if you are venturing further afield or have just arrived back from travels abroad.

\ SECURITY

RECEPTION
SECURITY PERSONNEL
CCTV
KEY ACCESS

\ PRACTICAL ASSISTANCE

HOUSEKEEPING & CLEANING
LAUNDRY & DRY CLEANING
BABYSITTING
ARRANGING DOCTOR VISITS
SOURCING TEACHERS FOR PRIVATE TUITION
REPAIR & MAINTENANCE SERVICES

\ LEISURE

EVENTS & TICKETS
BOAT TRIPS
PARTY & EVENT PLANNING
SIGHTSEEING
ROOM SERVICE FOOD & DRINK
RESTAURANT, BAR, CLUB RESERVATIONS
SPA TREATMENTS
PERSONAL TRAINING
SPORTS BOOKINGS

\ TRAVEL

TRANSFERS
AIRLINE BOOKINGS
HOTEL RESERVATIONS
CAR HIRE

\ SHOPPING

GENERAL & PERSONAL SHOPPING
FLOWER / GIFT PURCHASE & DELIVERY
STOCKING KITCHENS – SOURCING



\ LOBBY



THE POOLS

Water invites both tranquillity and vitality. It is imbued in NEO’s DNA. At the edge of the Mediterranean, four private pools are designed to complement the beauty of the sea.



On the rooftop, the pool is framed by soothing natural tones, plants and native trees, surrounded by a vista of the sea and gardens below. An indoor lap pool flooded with natural light allows you a meditative swim to rebalance, and the outdoor infinity edge pool immerses you in the undulating views out across the sea. The shallow, walk-in kids pool is a haven for outdoor play, edged with lush green terraced seating.

\ KIDS POOL
58 SQ.M, 450MM DEPTH

\ INDOOR LAP POOL 150 SQ.M, 25M LENGTH & 6M WIDTH



\ HYDRO-POOL 47 SQ.M.



\ TREATMENT ROOM

\ SAUNA



\ SPA LOBBY



WELLNESS SPA

Harmony. Balance. Well-being. Designed for contemplation. Your retreat, at home.

NEO's dedicated 1200 sq.m. wellness spa includes treatment rooms, a lounge, steam and sauna rooms and a juice bar. The spa design is inspired by Greek artist Panos Tsagaris whose paintings, reminiscent of architectural forms are intended to

communicate divinity and purification, resonate conceptually with the philosophy behind NEO's wellness experience. Timber flooring, Cote d'Azur marble, aged brass and woven fabrics anchor a palette designed to promote serenity and peace.



\ THE GYM

The gym features a trio of spaces to optimise your workout experience. The aerobic and power room have state-of-the-art equipment and personal trainers on hand to create tailored programmes. The yoga room offers a slower pace and calmer environment and can also be transformed into a private training space.

AEROBIC ROOM: 90 SQ.M.
POWER ROOM: 75 SQ.M.
YOGA ROOM: 55 SQ.M.



INDOOR & OUTDOOR FITNESS



\ TENNIS COURT

Overlooking Limassol are two clay tennis courts, framed by lush plants and trees. Enjoy the temperate climate and fresh air with a game outside, surrounded by nature.

CINEMA

A private space for NEO residents and their guests. A place to relax in sumptuous furnishings and enjoy time out from the everyday.



MINTHIS MEMBERSHIP

NEO residents benefit from membership of the facilities at Minthis — the Pafilia resort set among the beautiful Cypriot hillside landscape. Designed with the philosophy of recharging and reconnecting in mind, Minthis offers pioneering architecture and soul-stirring panoramas.

Surrounded by miles of countryside, the opportunities for adventure at Minthis are endless. Hikers will be rewarded at the end of steep climbs with outstanding views,

while equestrians can explore tracks-less-traveled on trusted steeds. Make precious memories with your family on nature walks and at the playgrounds. Adrenaline seekers will find mountain bike trails that are beautifully thrilling. Those seeking more peaceful pursuits can grab their clubs for a leisurely day on the spectacular championship golf course or seek out the spa. The Minthis lifestyle comes with the freedom to embrace enriching experiences.



THE RIVIERA CLUB

Dining at the NEO Riviera Club combines world-class cuisine with unbroken views and the finest personal service.



\ TERRACE

Designed to blend the indoors with the outdoor light, air and views, the Riviera Club terrace is a place to meet friends high above the city, or to escape for a moment's contemplation during the day. Take time out, or bring the energy of the city in, while you enjoy some of the best sea views in the city.

\ INTERIOR



BARS

\ JUICE BAR



Spaces for you. Places to meet.
An immersive lifestyle from day to night.

NEO is designed around you and your day. Premium, thoughtful spaces for spending time by yourself, or with family and friends, are central to its philosophy. From morning pre-workout drinks in the Juice Bar to a leisurely weekend afternoon or evening by the Pool Bar, there will be any number of corners to make your own.

\ POOL BAR



\ POOL BAR



THE NEO BOULEVARD

A landmark. A connection. A sense of place.
Creating a new destination for Limassol.

NEO's urban boulevard offers integration in the neighbourhood with the public spaces of the development. The landscape is designed to blend and layer with the surrounding environment, with no visual separation. The public retail boulevard offers

space for brands to be part of the NEO offering, with a promenade linking the park to the adjoining gardens and amphitheatre and creating an overall sense of community and a new destination for the city.



\ RETAIL LEVEL



\ AERIAL VIEW





FROM
THE
EARTH
TO THE
SKY

FROM
THE
SKY
TO THE
SEA

PURE MEDITERRANEAN CHARM



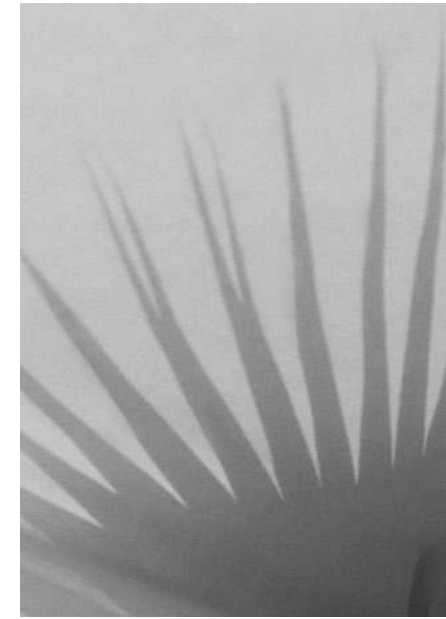
The romantic Riviera lifestyle along the shores of the Mediterranean has long captured the imagination. Limassol is the next chapter.

The nostalgic appeal of the early twentieth century Riviera has encouraged and evolved a new generation of style and living in Limassol. A dynamic, cosmopolitan city, it is renowned for its vibrant atmosphere and spontaneous hospitality. The city retains its historical character and respect for its natural landscapes, but there is also an atmospheric night-life, fine fresh cuisine and chic bars and boutiques dotted along the beachfront and quaint historical streets.

The famed flavours of the Mediterranean are at the heart of the menus in Limassol's restaurants — whether classic tavernas, fresh fish on the marina or the city's choice of international fine dining. Traditional local

cuisine includes the renowned meze, kleftiko, souvla, moussaka and sheftalia and can be enjoyed at any number of the locally-owned restaurants, famed for their memorable and welcoming atmospheres.

Limassol is a treasure trove of boutiques, hand-crafted goods and prestigious shopping. The shopping streets in the old town are a short walk from the seafront promenade. Agiou Andreou Street is known for its locally produced items, including art pieces, leather and woven goods, ceramics and copper-ware. There are excellent local jewellers, and open air fruit and vegetable markets to wander through at leisure.

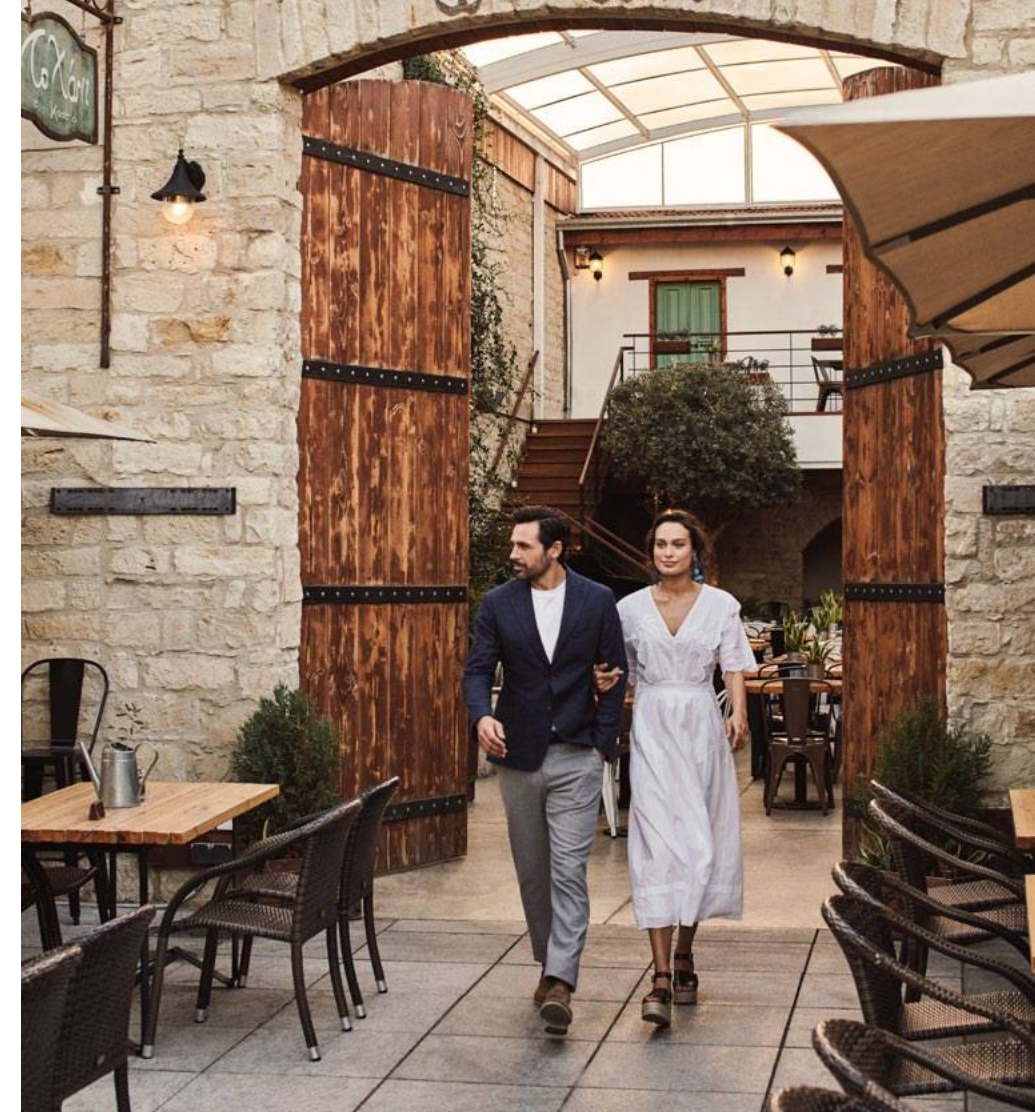


CENTRALLY LOCATED IN THE HEART OF LIMASSOL, COLUMBIA PLAZA IS A BUSTLING HUB OF ENTERTAINMENT, GASTRONOMY AND NIGHT-LIFE. DAY TO NIGHT, IT IS A COSMOPOLITAN MEETING PLACE, AT THE HEART OF WHICH IS A BEAUTIFUL COURTYARD TERRACE.





AT THE CORE OF MODERN, URBAN LIMASSOL IS ITS ANCIENT HEART — THE OLD TOWN — ALSO KNOWN AS LEMESOS. NARROW STREETS RADIATE FROM THE OLD FISHING HARBOUR AND AROUND THE MEDIEVAL CASTLE. THE PERFECT PLACE TO WANDER.



“The famous Limassol soul is imbued in the local tavernas, boutiques and markets — a city of discovery, ripe for exploration and enjoyment.”





ON THE SEA & SHORE

The climate to be outdoors. The landscapes to explore.
Dip your toes in the sea. Dive under the waves. Or sail above them.

Limassol and its surrounding region are the place for exploration. On land or sea, the temperate climate and varied landscapes are the ingredients for activity. Hire a boat for a day of sailing or fishing, or opt for something more exhilarating — water-skiing or wind-surfing along the beautiful coastline will awaken the senses. Scuba-diving allows you to find out what’s below the waves...

Adopt a slower pace and watch the world go by from one of the famed Cypriot beaches. Lady’s Mile offers 5km of golden sand and warm, shallow waters, running along the east side of Akrotiri. The Kourion beach is steeped

in ancient history, lying at the foot of the mountains below the ancient amphitheatre. Pissouri beach curves around a sweeping natural bay, framed by crystal-clear waters for a daytime dip or quiet paddle board.

For walks in the sunshine, take a stroll or a cycle down the 17km of promenade running alongside the sea in front of NEO or take to the wild trails of the Troodos mountains. When back into town, stop to enjoy the hospitality in the traditional Cypriot villages; hidden hillside treasures and areas of outstanding natural beauty.



“Make discoveries on land or sea, explore under the waves or up in the mountains.”



WITH THE MEDITERRANEAN SEA ON YOUR DOORSTEP, WHAT BETTER THING TO DO THAN HEAD OUT ON THE OPEN SEAS TO EXPLORE? NEO’S PERSONAL CONCIERGE SERVICE CAN ARRANGE BOAT TRIPS AND PRIVATE HIRES.



LIMASSOL IS A CITY OF CONTRASTS AND OFFERS YOU PLENTY OF WAYS TO ENJOY ALL THE ELEMENTS OF NATURE, LOCAL CULTURE, TRADITIONAL AND CONTEMPORARY SHOPPING AND A THRIVING RESTAURANT AND NIGHT-LIFE LIFESTYLE.



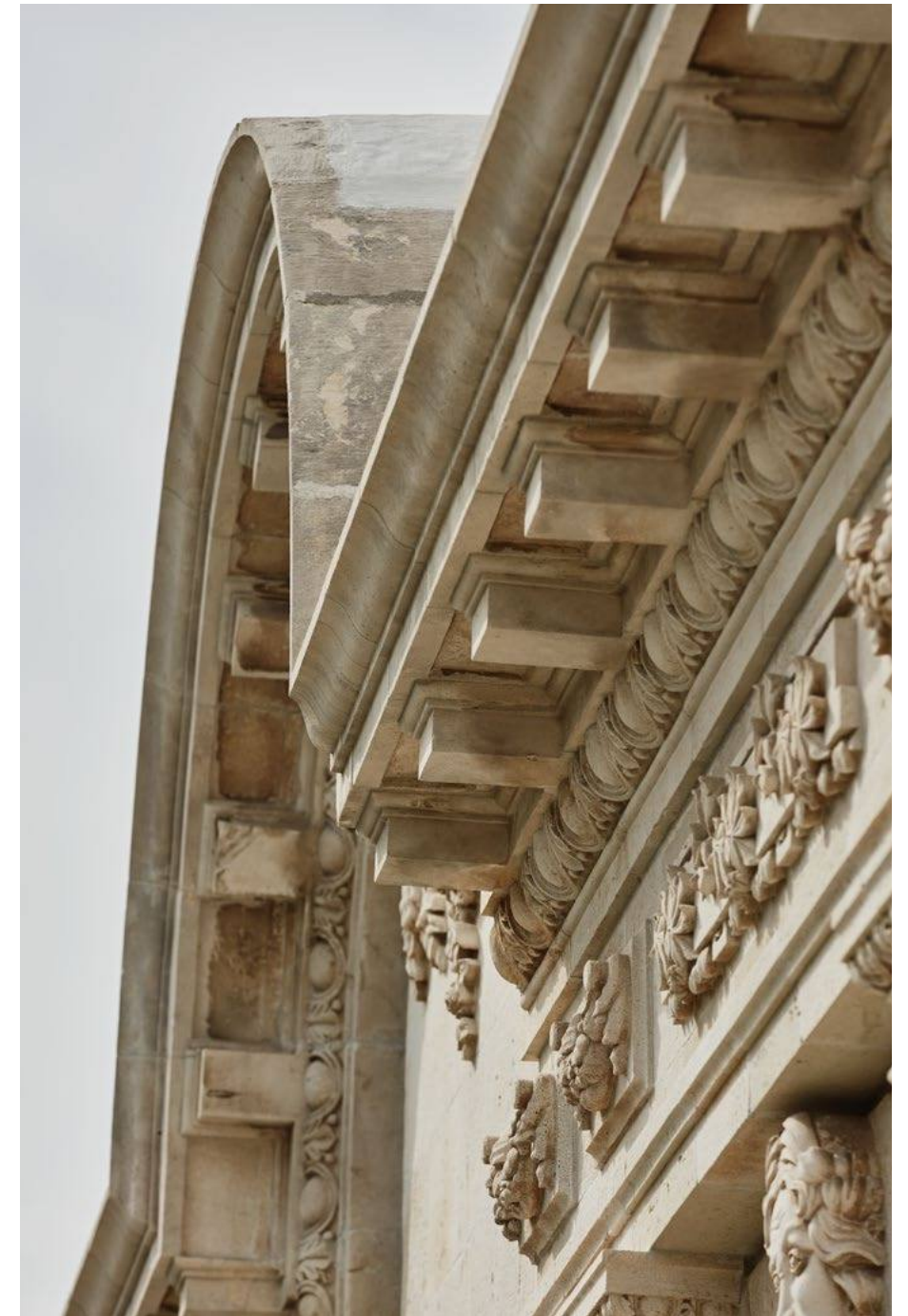
“Adopt a slower pace of life. Watch the world go by.
Discover the natural balance of Limassol life.”



HERITAGE & CULTURE

Limassol is situated between the ancient cities
of Amathous to the east and Kourion to the west.

“A walk through the old town takes you from the
seafront, past the old port, the open-air sculpture
park, the castle, the Cathedral of Agia Napa
and picturesque streets.”





THE MAJESTIC LIMASSOL LIBRARY IS ONE OF THE LARGEST LIBRARIES IN CYPRUS, WITH 60,000 VOLUMES. IT IS PARTICULARLY DISTINGUISHED FOR ITS UNIQUE CYPRIOLOGICAL DEPARTMENT, WHICH INCLUDES RARE CYPRIOT EDITIONS DATING BACK TO THE LAST DECADES OF THE 19TH CENTURY.



A CITY FOR DISCOVERY



“Rich with history, Limassol remains a cultural centre, with ancient and archaeological sites, a medieval castle, the old fishing harbour and extensive gardens.”



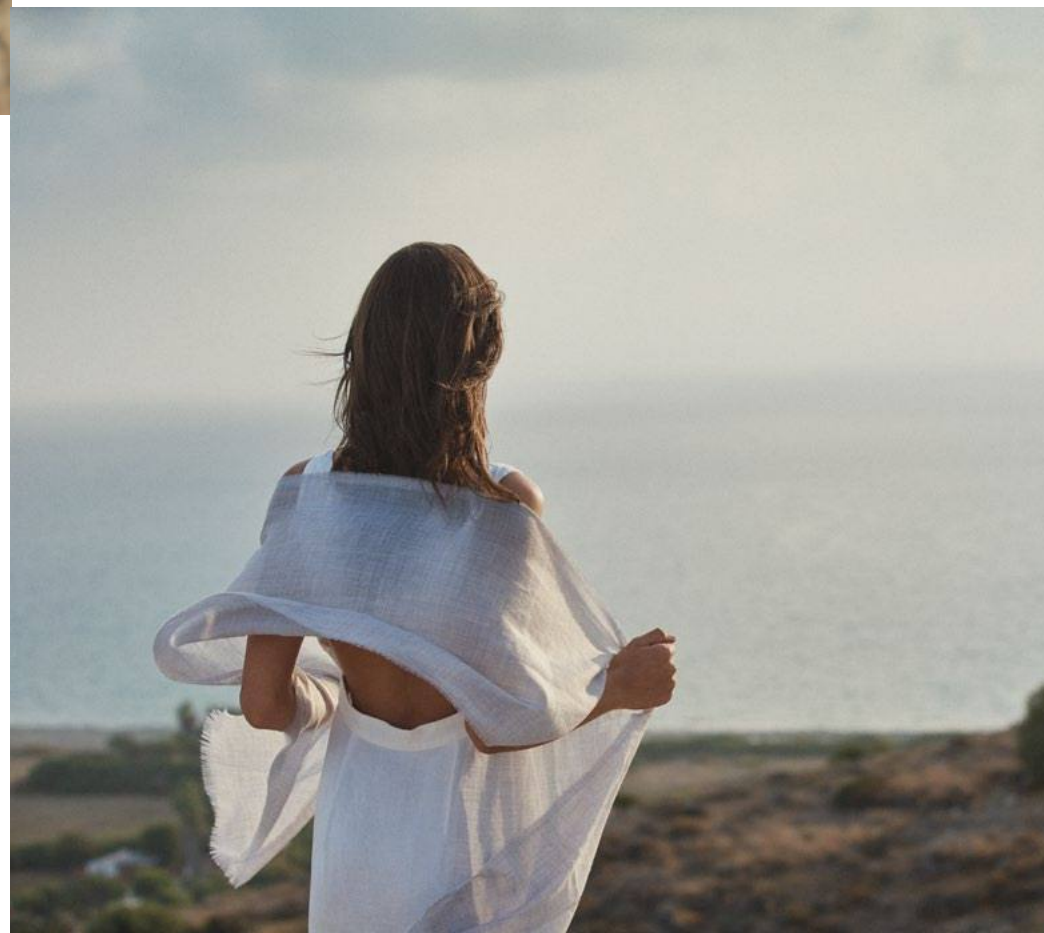
A modern city built on the foundations of history.

Limassol's history is punctuated by an event that marked the end of the Byzantine Rule in Cyprus. The English king Richard the Lionheart, noting the strategic importance of Cyprus as a base, conquered the island and celebrated his marriage to his new queen Berengaria in Limassol. The old fort where the ceremony took place is now a landmark attraction and the site of the Museum of the Middle Ages.

A guided walk through the old town takes you from the seafront, past the old port, the open-air sculpture park, the castle, the Cathedral of Agia Napa and some of the city's picturesque streets.

The Archaeological Museum hosts a collection of artefacts that were found throughout Limassol, and the collections are regularly updated with new exhibits found in the important archaeological regions of nearby Amathus and Kourion. Kourion is renowned for the immaculately-preserved mosaics that decorate the floors of its stately villas.

The Limassol Public Gallery hosts one of the largest collections of Cypriot Modern Art, including significant works detailing the history of art in the country. For greener exploration, the Botanical Gardens, located on the coastal avenue right in the heart of the city centre, are a place for quiet contemplation or to spend time with family and friends.





THE ANCIENT KOURION AMPHITHEATRE WOULD ONCE HAVE BEEN ONE OF THE MAIN ATTRACTIONS OF THE KINGDOM, FOR THEATRE OR GLADIATOR GAMES. TODAY THE AMPHITHEATRE IS A VENUE FOR CULTURAL EVENTS THAT INCLUDE MUSIC AND THEATRICAL PERFORMANCES DURING THE SUMMER MONTHS.

“Limassol’s cultural wealth is enhanced by a multinational population. Tens of thousands of people from other countries have become an indivisible part of the city’s past, present and future.”



ETER-
NITY
IS THE
SUN

MIXED
WITH
THE
SEA

MAP DIRECTORY

LIMASSOL MAP P. 12 & 13

FOOD & DRINKS

\ RESTAURANTS

- 1 Dionysus Mansion
- 2 Columbia Plaza
- 3 Cleopatra Lebanese Restaurant
- 4 Meze Taverna Restaurant
- 5 Carob Mill
- 6 Il Castello
- 7 Artima
- 8 The Local Fish & Meat
- 9 Ousia Lounge Café
- 10 OSHI Asian Interactive Restaurant
- 11 Le Frenchie
- 12 Barbacoa BBQ
- 13 Lab. Restaurant Bar
- 14 Manoushe Lebanese Food & Bakery
- 15 Pyxida Fish Tavern
- 16 Pier One
- 17 The Steak House
- 18 Gin Fish
- 19 Avli Tou Vasilea
- 20 The Noodle House
- 21 Columbia Beach Restaurant & Bar
- 22 Hani Lounge & Restaurant
- 23 Frankie's Social Restaurant & Bar
- 24 The Cookhouse

\ BARS

- 1 Soho Wine & Cocktail Bar
- 2 Blue Apple Bar & Grill
- 3 Bono Bar and Restaurant
- 4 Epsilon Resto Bar
- 5 Cambana Booze and Cuisine
- 6 7 Seas Music Bar
- 7 Chaplins Bar
- 8 Route 66
- 9 Library Bar
- 10 Anjeloose Bar
- 11 Algebra
- 12 Gin Garden
- 13 Bordello Bar
- 14 Madame

\ CAFES

- 1 Gloria Jean's Coffee
- 2 Confuzio Café
- 3 Starbucks
- 4 Uluwatu Speciality Coffees
- 5 Remezzo Café
- 6 Stretto Café
- 7 Tree Cafe Bar
- 8 Red Cafe Pizza Romana
- 9 La Croissanterie
- 10 Astir Café
- 11 Caffè Nero
- 12 Nuovo Café
- 13 Bolse Vita
- 14 Thalassaki
- 15 Pralina Cafe
- 16 Milk Bar

AMENITIES

\ SUPERMARKETS

- 1 Alpha Sigma Supermarket
- 2 Alphamega Linopetra
- 3 Poplife Supermarkets
- 4 Papantoniou Supermarket
- 5 Family Express
- 6 Parekkliotis Supermarket
- 7 Kyriakos Andreou Supermarket
- 8 Alphamega Limassol Marina
- 9 Sklavenitis
- 10 Lidl
- 11 Plus Discount Market
- 12 Alexandra-Baclaran minimarket
- 13 Mary's Market

\ PHARMACIES

- 14 Pharmacy
- 15 Pharmacy Fotini Vasilopoulou
- 16 Sylvana Ereifej Pharmacy
- 17 Roots Pharmacy
- 18 Nearchos Pharmacy
- 19 Pharmacy Andreas Aspros
- 20 Pharmacy Kostas Pastellas

\ BANKS

- 21 RCB Bank Ltd.
- 22 Bank of Cyprus
- 23 Ancoria Bank
- 24 BBAC Bank
- 25 Hellenic Bank

ENTERTAINMENT

\ SHOPPING

- 1 My Mall Limassol
- 2 Makarios Avenue
- 3 Anexartisias

\ THEATRES & CINEMAS

- 4 Rialto Theatre
- 5 Pattiheio Municipal Theatre
- 6 K Cineplex Limassol
- 7 Rio Cinemas

\ GALLERIES

- 8 NeMe Arts Centre
- 9 Gallery Morfi
- 10 Limassol Archaeological Museum
- 11 Municipal Folk Art Museum
- 12 Thiseas Art Gallery
- 13 Mihoart Gallery
- 14 Karima BenOtman Atelier
- 15 Golden Gallery by Kapatays

\ BEACHES

- 16 Miami Beach
- 17 DaNala Beach
- 18 Vouppa Beach
- 19 Castella Beach
- 20 Loures Beach
- 21 Aphrodite Beach
- 22 Dasoudi Beach

EDUCATION

\ SCHOOLS & NURSERIES

- 1 Trehandiri Nursery School
- 2 Margherita's School
- 3 Little Wonders Preschool

\ OTHER

- 4 Foley's Grammar School
- 5 Morfosis Private School
- 6 Limassol Theatre Arts School
- 7 L.I.T.C. Russian-English Private School
- 8 IMS Private School
- 9 Papadakeion Municipal Scool of Music
- 10 Nareg Armenian School
- 11 Limassol Hackerspace School
- 12 Grains Music School
- 13 Lighthouse School
- 14 Cyprus International Institute of Management
- 15 Logos School of English Education
- 16 Cyprus University of Technology

CONTACT DETAILS

www.neolimassol.com

\ HEAD OFFICE – PAFOS

Pafilia Property Developers Ltd
33 Nicodemou Mylona Street
Marina Court
PO Box 60159
8101 Pafos, Cyprus
T. +357 26 848 800
F. +357 26 934 910
E. info@pafilia.com
www.pafilia.com

\ LIMASSOL

Pafilia Property Developers Ltd
307-309, 28th October Avenue
3105 Limassol, Cyprus
T. +357 25 590 880
E. info@pafilia.com
www.pafilia.com

\ ATHENS

Pafilia Property Developers Ltd
58, Kafkasou & 52, Skopelou str. Corner
Kypseli, Athens, Greece
T. +30 210 271 7100
E. info@pafilia.gr
www.pafilia.com

\ MOSCOW

Pafilia Property Developers Ltd
6 Presnenskaya Naberezhnaya, bldg. 2
Empire Tower, Floor 31
Office 3
123112 Moscow
T. +7 495 137 8998
E. russian@pafilia.com
www.pafilia.ru

\ BEIJING

Pafilia Property Developers Ltd
3305, No.6 Building, Jianwai SOHO,
No.39 East, 3rd Ring Middle Road,
Chaoyang District, Beijing, China
T. +86 136 6102 2984
E. info@pafilia.cn.com
www.pafilia.cn

\ SHANGHAI

Pafilia Property Developers Ltd
Room B15, 22F,
Jing'an Kerry Centre Office Tower 3,
No 1228 Middle Yan'an Road, Jing'an District,
200040, Shanghai, China
T. +86 183 1071 0629
E. j.he@pafilia.cn.com
www.pafilia.cn

\ SHENZHEN

Pafilia Property Developers Ltd
Room 8546, 85/F, Ping An Finance Centre,
No. 5033 Yitian Rd, Futian District,
Shenzhen, China
T. +86 138 0252 9290
E. southchina@pafilia.com
www.pafilia.cn

\ HO CHI MINH

Pafilia Property Developers Ltd
Level 46, Bitexco Financial Tower
2 Hai Trieu Street, District 1,
Vietnam, South East Asia
T. +84 28 6287 5911
M.+84 77 7686 019, +357 99 381 684
E. seasia@pafilia.com
www.pafilia.com

The contents and information contained in this brochure are intended for general marketing purposes only and must not be construed as advice, or being complete and accurate nor be relied upon as such. The photographs of the surrounding views and location may have been digitally enhanced or altered and do not represent actual views or surrounding views. These photographs are indicative only. Fittings and finishes are subject to availability and company's discretion. Prospective purchasers should make and must rely on their own enquiries. This brochure is a guide only and does not constitute an offer or contract. Neither the company nor any of its directors or employees give any representation or warranty as to the reliability of the information contained herein, and shall not be responsible and disclaim all loss, liability or expense of any nature whatsoever which may be attributable (directly, indirectly or consequentially) to the use of the information provided.

NOTES