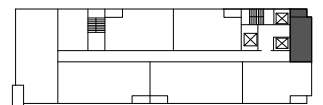


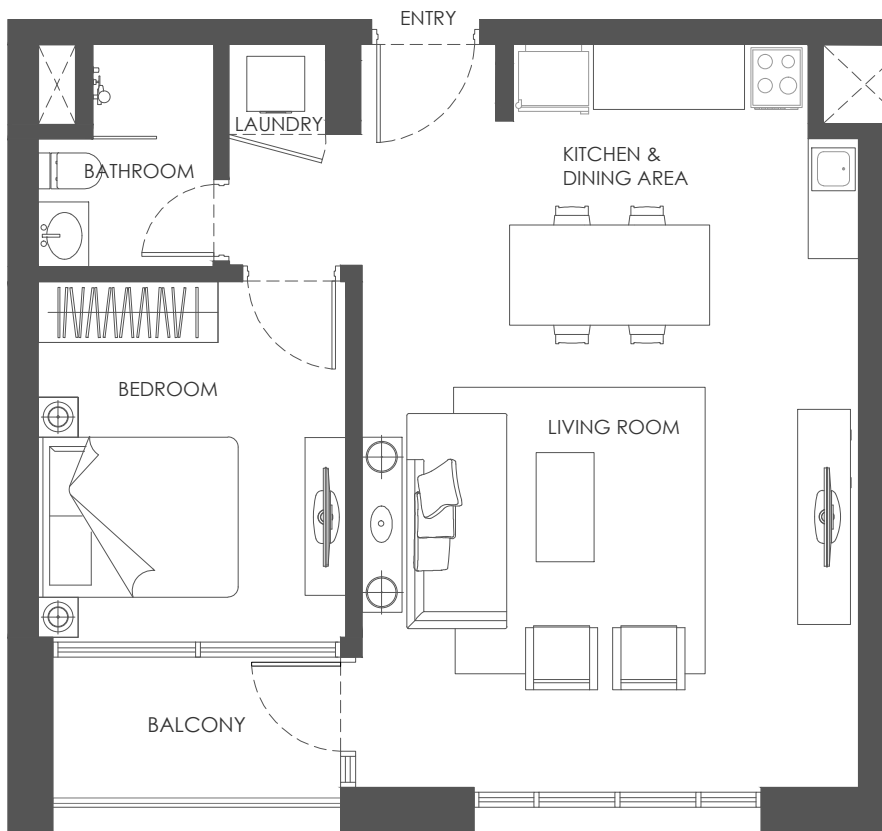
Key Plan



APARTMENT AREA: 38.20m<sup>2</sup>  
NET AREA: 33.12m<sup>2</sup>  
BALCONY AREA: 5.08m<sup>2</sup>



DISCLAIMER: Note that this floor plan was produced prior to the completion of construction and is indicative only and not to scale. Changes may be made during development, with areas, fittings, finishes and specification subject to change without notice in accordance with the Sale and Purchase Agreement. The furniture depicted is not included with any sale and should not be taken to indicate the final positions of power points, TV connections and the like. Prospective purchasers must rely on their own enquiries from time to time. Bulkheads necessary for services and structure are not depicted.



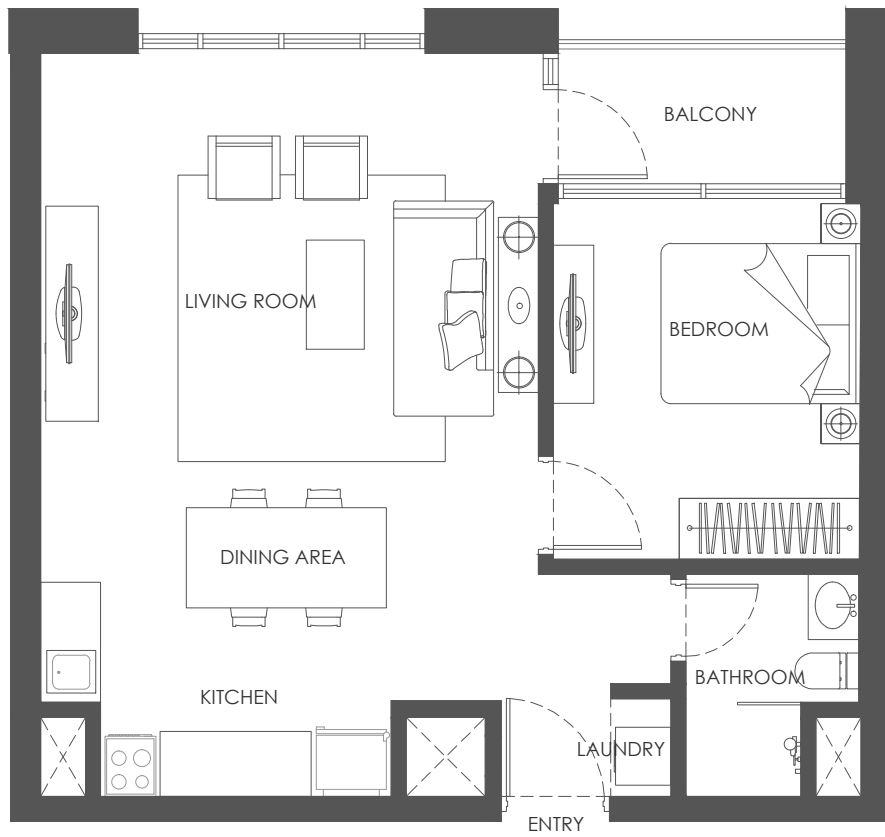
Key Plan



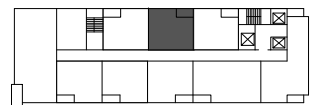
APARTMENT AREA: 64.21m<sup>2</sup>  
NET AREA: 59.09m<sup>2</sup>  
BALCONY AREA: 5.12m<sup>2</sup>



DISCLAIMER: Note that this floor plan was produced prior to the completion of construction and is indicative only and not to scale. Changes may be made during development, with areas, fittings, finishes and specification subject to change without notice in accordance with the Sale and Purchase Agreement. The furniture depicted is not included with any sale and should not be taken to indicate the final positions of power points, TV connections and the like. Prospective purchasers must rely on their own enquiries from time to time. Bulkheads necessary for services and structure are not depicted.



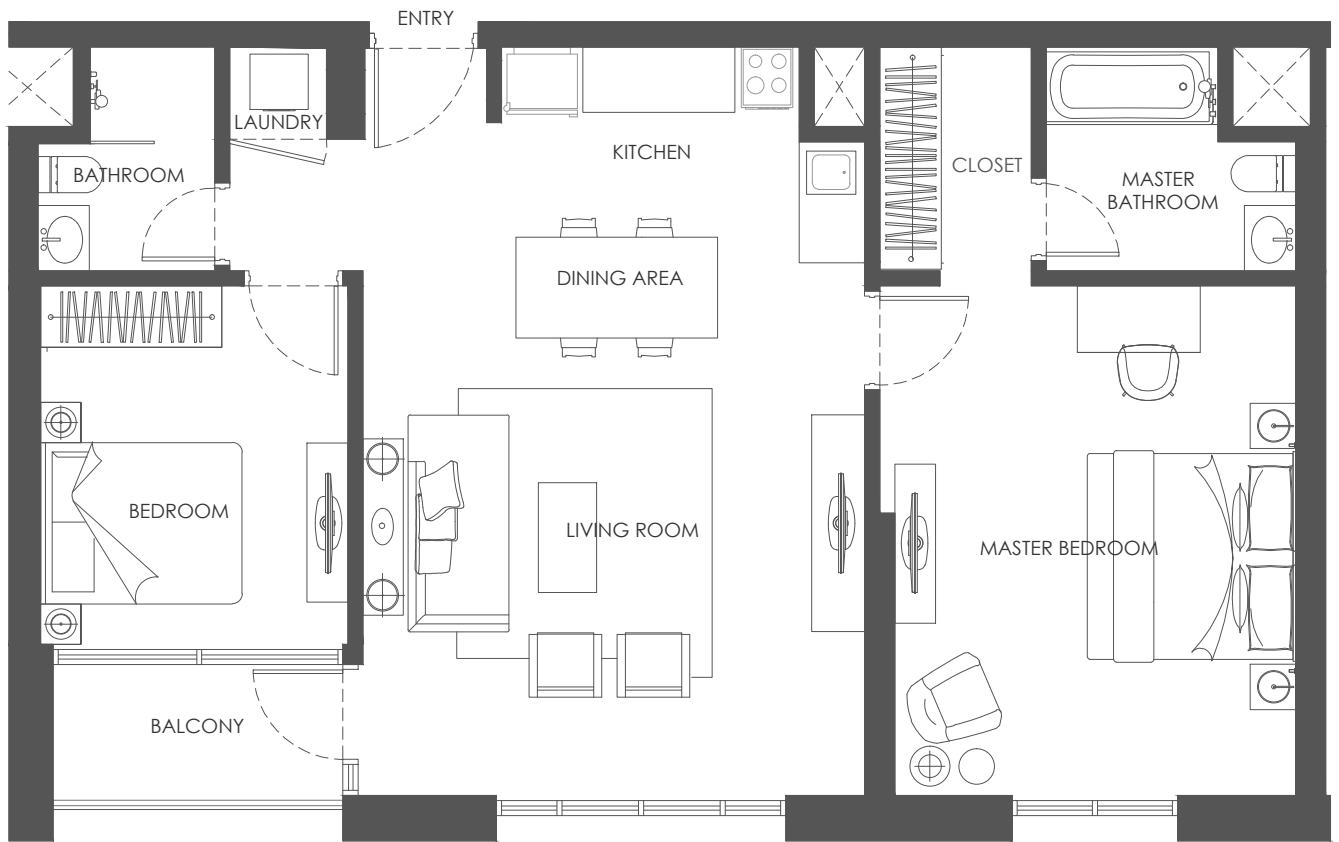
Key Plan



APARTMENT AREA: 63.02m<sup>2</sup>  
NET AREA: 57.89m<sup>2</sup>  
BALCONY AREA: 5.13m<sup>2</sup>



DISCLAIMER: Note that this floor plan was produced prior to the completion of construction and is indicative only and not to scale. Changes may be made during development, with areas, fittings, finishes and specification subject to change without notice in accordance with the Sale and Purchase Agreement. The furniture depicted is not included with any sale and should not be taken to indicate the final positions of power points, TV connections and the like. Prospective purchasers must rely on their own enquiries from time to time. Bulkheads necessary for services and structure are not depicted.



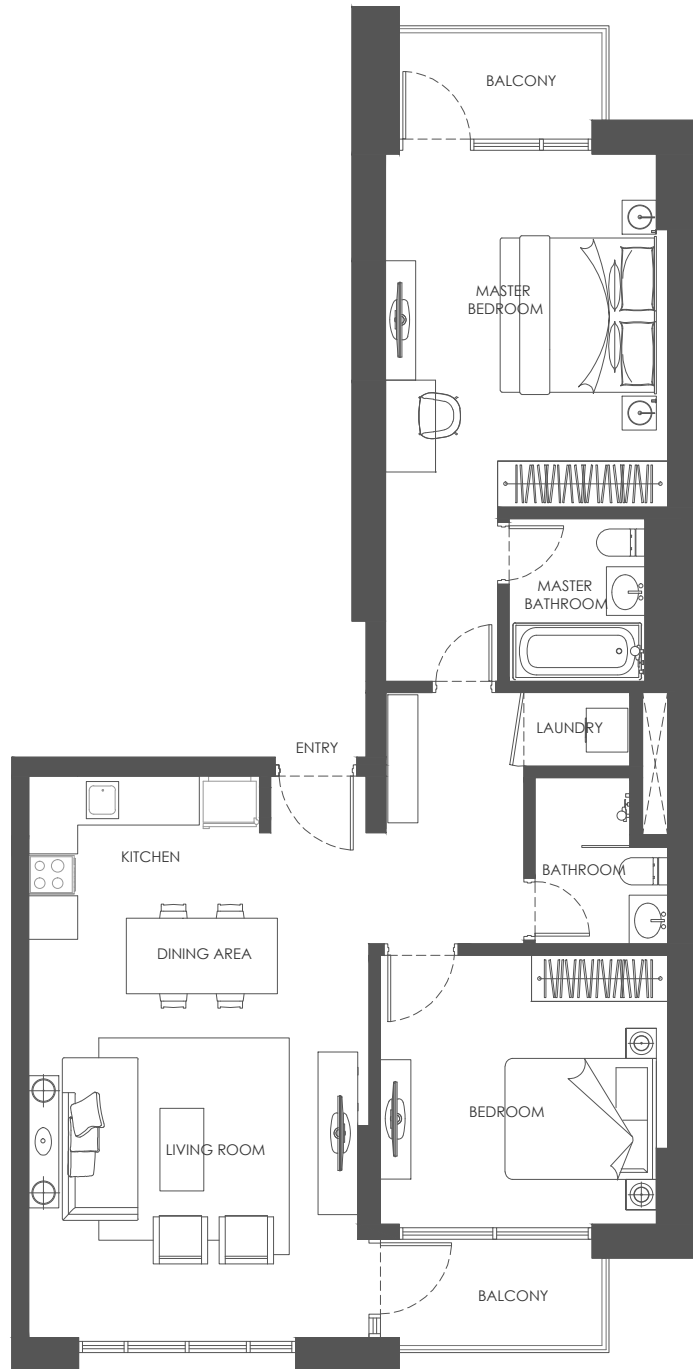
Key Plan



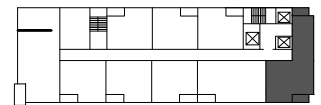
APARTMENT AREA: 95.99m<sup>2</sup>  
NET AREA: 90.87m<sup>2</sup>  
BALCONY AREA: 5.12m<sup>2</sup>



DISCLAIMER: Note that this floor plan was produced prior to the completion of construction and is indicative only and not to scale. Changes may be made during development, with areas, fittings, finishes and specification subject to change without notice in accordance with the Sale and Purchase Agreement. The furniture depicted is not included with any sale and should not be taken to indicate the final positions of power points, TV connections and the like. Prospective purchasers must rely on their own enquiries from time to time. Bulkheads necessary for services and structure are not depicted.



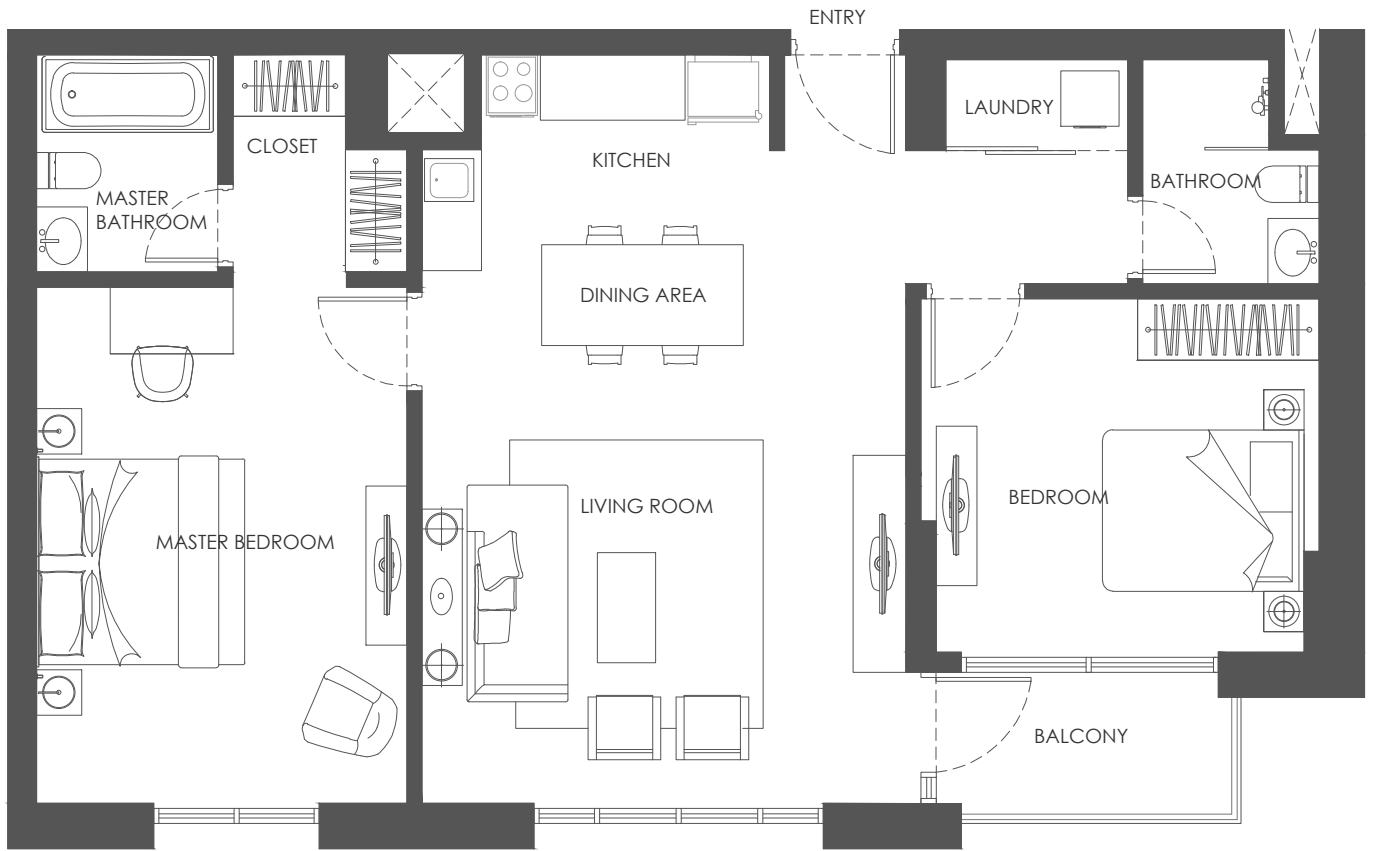
Key Plan



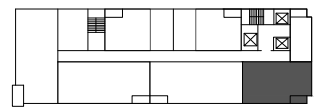
APARTMENT AREA: 103.58m<sup>2</sup>  
NET AREA: 93.50m<sup>2</sup>  
BALCONY AREA: 10.08m<sup>2</sup>



DISCLAIMER: Note that this floor plan was produced prior to the completion of construction and is indicative only and not to scale. Changes may be made during development, with areas, fittings, finishes and specification subject to change without notice in accordance with the Sale and Purchase Agreement. The furniture depicted is not included with any sale and should not be taken to indicate the final positions of power points, TV connections and the like. Prospective purchasers must rely on their own enquiries from time to time. Bulkheads necessary for services and structure are not depicted.



Key Plan



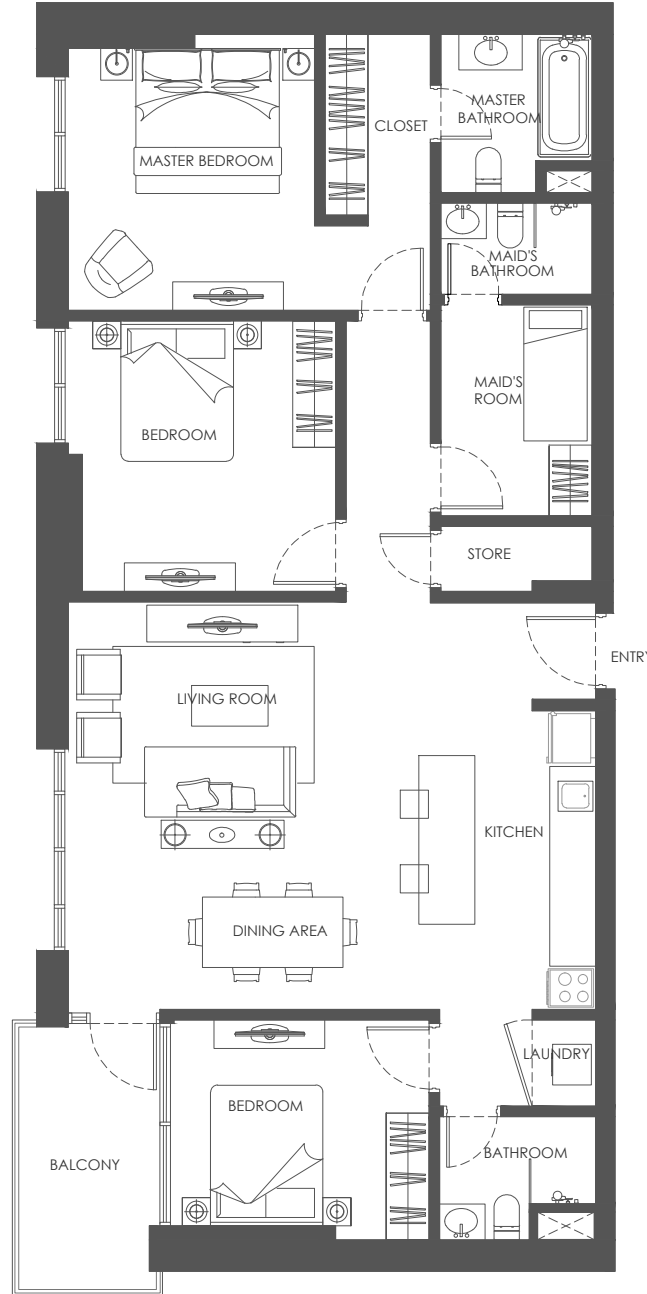
APARTMENT AREA: 97.25m<sup>2</sup>

NET AREA: 92.25m<sup>2</sup>

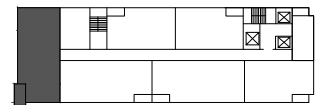
BALCONY AREA: 5.00m<sup>2</sup>



DISCLAIMER: Note that this floor plan was produced prior to the completion of construction and is indicative only and not to scale. Changes may be made during development, with areas, fittings, finishes and specification subject to change without notice in accordance with the Sale and Purchase Agreement. The furniture depicted is not included with any sale and should not be taken to indicate the final positions of power points, TV connections and the like. Prospective purchasers must rely on their own enquiries from time to time. Bulkheads necessary for services and structure are not depicted.



Key Plan



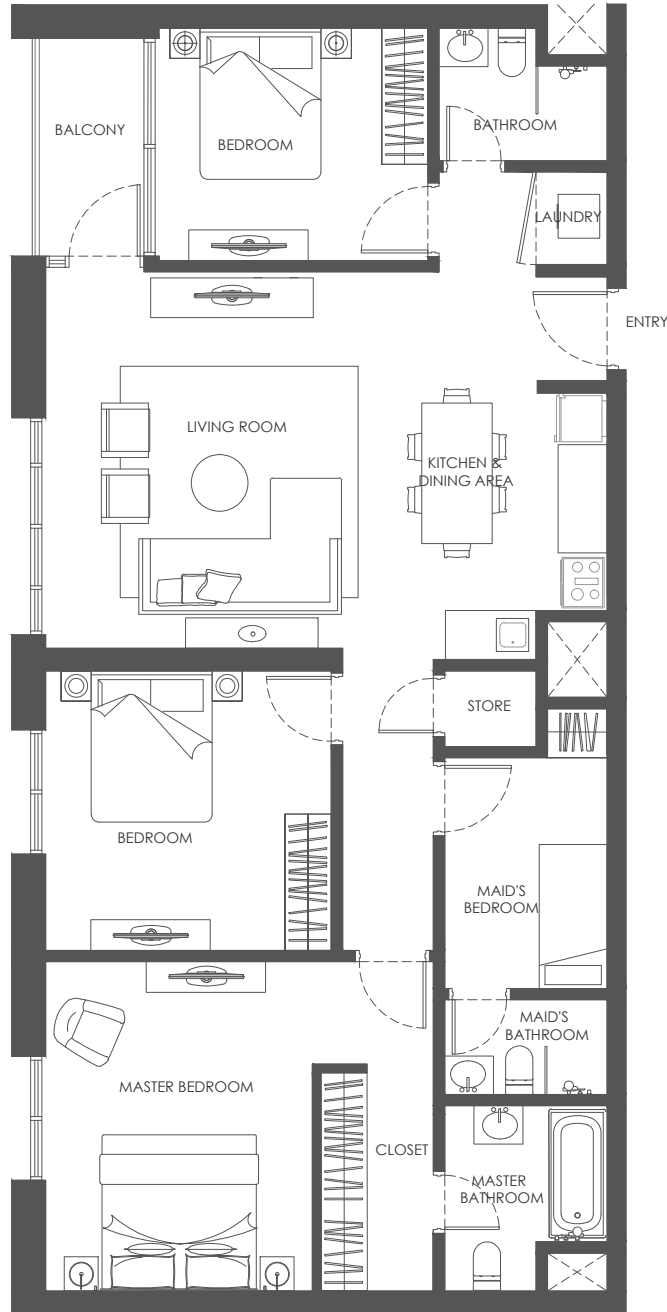
APARTMENT AREA: 137.19m<sup>2</sup>

NET AREA: 128.69m<sup>2</sup>

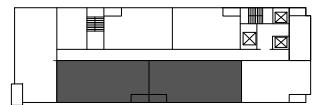
BALCONY AREA: 8.50m<sup>2</sup>



DISCLAIMER: Note that this floor plan was produced prior to the completion of construction and is indicative only and not to scale. Changes may be made during development, with areas, fittings, finishes and specification subject to change without notice in accordance with the Sale and Purchase Agreement. The furniture depicted is not included with any sale and should not be taken to indicate the final positions of power points, TV connections and the like. Prospective purchasers must rely on their own enquiries from time to time. Bulkheads necessary for services and structure are not depicted.



Key Plan



APARTMENT AREA: 128.02m<sup>2</sup>  
NET AREA: 122.92m<sup>2</sup>  
BALCONY AREA: 5.10m<sup>2</sup>



DISCLAIMER: Note that this floor plan was produced prior to the completion of construction and is indicative only and not to scale. Changes may be made during development, with areas, fittings, finishes and specification subject to change without notice in accordance with the Sale and Purchase Agreement. The furniture depicted is not included with any sale and should not be taken to indicate the final positions of power points, TV connections and the like. Prospective purchasers must rely on their own enquiries from time to time. Bulkheads necessary for services and structure are not depicted.